

Guide of China's Import from Cambodia 2015



ASEAN-CHINA CENTRE
中国 — 东盟 中心

Contents

I . Overview of China-ASEAN Economic and Trade Cooperation	1
II . Profile of China-Cambodia Bilateral Trade	2
III. List of China’s Agricultural Imports from Cambodia.....	4
(I) Selection Method	4
(II) List of Main Agricultural Imports	4
(III) Situation of Import Tariff Quotas of China’s Agricultural Products	6
1. List of agricultural products subject to the administration of import tariff quotas	6
2. The import tariff quotas management system of agricultural products	6
(IV) Distribution of Import Tariff Quotas of Agricultural Products in 2015	11
1. Distribution of import tariff quotas of grains.....	11
2. Distribution of import tariff quota of cotton	13
3. Distribution of import tariff quota of sugar	14
IV. List of China’s Non-agricultural Imports from Cambodia	17
(I) Selection Method	17
(II) List of Main Non-agricultural Imports	17
V . Process Management of China’s Imports from Cambodia	19
(I) Inspection & Quarantine	19
(II) Customs Clearance	21
(III) Cooperation between customs and inspection & quarantine departments	22
Appendix I	24
Appendix II	25
Appendix III.....	44

I . Overview of China-ASEAN Economic and Trade Cooperation

China-ASEAN FTA is the first FTA that China signed with other economies. And it is the biggest established FTA. ASEAN is made up by the ten member states of Indonesia, Malaysia, Philippines, Singapore, Thailand, Brunei Darussalam, Vietnam, Lao PDR, Myanmar and Cambodia which covers 1.85 billion people and 1.4 thousand square kilometers. China and ASEAN Member signed the Framework Agreement on China-ASEAN Comprehensive Economic Cooperation at the sixth China-ASEAN Summit in November 2002. The establishment of China-ASEAN free trade area enhances the close economic and trade relations between the two parties, and also contributes to the economic development of Asia and the world at large.

According to the database of the commodity trade of the United Nations, China-ASEAN trade rose at an annual rate of about 20% from over \$50 billion to \$480 billion between 2002 and 2014. And the bilateral accumulated investment is over \$1000. China-ASEAN trade increased fast except that in 2012 since the Global Financial Crisis of 2008, and accounted for 11.16% of China's foreign trade. China-ASEAN trade had been in favor of the ASEAN side during the 2000-2011 period. But China's trade surplus appeared in 2012 and the surplus was \$44.53 billion in 2013. Increasing imports from ASEAN should receive much attention, and it will contribute to China's trade balance.

ASEAN has comparative advantages in products such as rice, fish, wood, etc. in terms of the weather and natural resources. China should import the products more from ASEAN. Since the entrance into the WTO, China's agricultural foreign trade developed fast, but China's agricultural imports increased faster than its agricultural exports and its agricultural trade deficit grew. On one hand, living standards improvement induces the rapid increase of high-quality agricultural products. On the other hand, China's agriculture faces strong competition as agricultural market is open. China-ASEAN agricultural trade developed slowly and the share of China's agricultural foreign trade decreased although ASEAN was still an important source of China's agricultural imports. Agricultural trade between China and ASEAN dropped by about 5% in 2013. The share of China-ASEAN agricultural trade in China's

agricultural foreign trade declined to 9.3% in 2013 from 10.4% in 2009. The gap between supply and demand of grain exists in China. China and ASEAN are complementary in agricultural products such as fruits, vegetables, fish and etc. These can contribute to economic and trade cooperation of the two parties. Since China-ASEAN FTA strategy was carried out, the two parties cut the import tariffs down and promoted trade facilitation such as the procedures of customs clearance, the etc. The bilateral trade liberalization has made great progress. ASEAN suppliers are lack of understanding import quota administration, inspection and quarantine, import operators, etc. in agricultural trade. This hindered the development of agricultural trade between the two parties.

China will widen the opening up to ASEAN, benefit ASEAN on a basis of equality and mutual benefit in the new era of deepening reform and expanding opening-up. Xi Jinping, China's president, pointed out, "China is pleased to improve China-ASEAN FTA, and will manage to bring the bilateral trade up to \$1 trillion by 2020", and "China is pleased to reinforce sea cooperation, make good use of the China-ASEAN Investment Cooperation Fund", and jointly build the 21st Century Maritime Silk Road. In the new era, to compile *The Guide of China's Imports from ASEAN* will inject new impetus into the bilateral economic and trade development.

II . Profile of China-Cambodia Bilateral Trade

China and Cambodia are highly complementary in economy. Both sides have comparative advantages for different natural resources and industrial structures, laying an important foundation for bilateral economic and trade cooperation. On Jan. 1st, 2010, the CAFTA was completed fully, upon which China authorized a majority of Cambodian products zero tariff first, and Cambodia will authorize a majority of Chinese products zero tariff in 2015.

In 2014, the total volume of bilateral trade between China and Cambodia was \$3.762 billion, of which the total import-export volume of agricultural trade was \$126 million. China's volume of imports from Cambodia and its volume of exports to Cambodia were \$482 million and \$3.28 billion respectively. In terms of product structure, China mainly imports wood works, knitting clothes, non-kitting clothes, electronic products, cereals, etc. from Cambodia; while mainly exports knitting products, cotton, mechanical & electronic products, chemical fiber, etc. to Cambodia.

With the upgraded negotiation of the CAFTA and the in-depth promotion of the “Silk Road Economic Belt and the 21st Century Maritime Silk Road” strategy, China-Cambodia economic and trade cooperation has a promising prospect. Electricity, road and other infrastructures, agriculture (especially agricultural product planting and processing), light industry, tourism and the like will become key fields of economic and trade cooperation between China and Cambodia, and inject new vitality into both sides’ economic and trade development.

III. List of China's Agricultural Imports from Cambodia

(I) Selection Method

The trade of agricultural products plays an important role in the China-ASEAN trade, thus ASEAN suppliers need a more particular knowledge on the application of quotas, inspection and quarantine of Chinese agricultural products. In order to prepare this guide, the main agricultural products that China imports from ASEAN shall be firstly determined. Regarding the HS 4-bit code as a basis of classifying agricultural products, in accordance with the ordering of sum of agricultural products that China imported from Cambodia in 2014, the agricultural products ranking in the top 30 are selected.

(II) List of Main Agricultural Imports

The list of main agricultural products China imported from Cambodia in 2014 is formed according to UNCOMTRADE. In order to facilitate Cambodia suppliers' export of agricultural products to China, the Supervision Requirements of main agricultural products imported are listed in appendixes (see details in Appendix I and II).

List of China's Main Agricultural Imports from Cambodia

Number	HS Code	Article Description
1	1006	Rice
2	0714	Manioc, arrowroot, salep, Jerusalem artichokes, sweet potatoes and similar roots and tubers with high starch or inulin content, fresh, chilled, frozen or dried, whether or not sliced or in the form
3	1108	Starches inulin
4	0306	"Crustaceans , whether in shell or not, live, fresh, chilled, frozen, dried, salted or in brine smoked crustaceans, whether or not cooked before or during the smoking process crustaceans, in shell,cooked by steaming or by boiling in water, whether or not chilled, frozen, dried, salted or in brine flours, meals and pellets of crustaceans, fit for human consumption "
5	2303	Residues of starch manufacture and similar residues, beet-pulp, bagasses and other waste of sugar manufacture, brewing or distilling dregs and waste, whether or not in the form of pellets
6	1701	Cane or beet sugar and chemically pure sucrose, in solid form

7	1805	Cocoa powder, not containing added sugar or other sweetening matter
8	0801	Coconuts, Brazil nuts and cashew- nuts, fresh or dried, whether or not shelled or peeled
9	1207	Other oil seeds and oleaginous fruits, whether or not broken
10	2208	Indetured ethyl alcohol of an alcoholic strength by volume of less than 80% vol spirits, liqueurs and other spirituous beverages
11	2203	Beer made from malt
12	0301	Live fish
13	2009	Fruit juices (including grape must) and vegetable juices, unfermented and not containing added spirit, whether or not containing added sugar or other sweetening matter
14	3301	Essential oils (terpeneless or not) , including concretes and absolutes resintyids extracted oleoresins concentrates of essential oils in fats, in fixed oils, in waxes or the like, obtained by enfleurage or maceration terpenic byproducts of the deterpenation of essential oils aqueous distillates and aqueous solutions of essential oils
15	0813	Fruit, dried, other than that of headings No. 08 01 to 08 06 mixtures of nuts or dried fruits of this Chapter
16	2101	Extracts, essences and concentrates, of coffee, tea or mate and preparations with a basis of these products or with a basis of coffee, tea or mate roasted chicory and other roasted coffee substitutes, and extracts, essences and concentrates thereof
17	2204	Wine of fresh grapes, including fortified wines grape must other than that of heading No. 2009
18	2106	Food preparations not elsewhere specified or included
19	2202	Waters, including mineral waters and aerated waters, containing added sugar or other sweetening matter or flavoured, and other Non-alcoholic beverages, not including fruit or vegetable juices of heading No. 2009
20	2206	Other fermented beverages (for example , cider, perry, mead) mixtures of fermented beverages and mixtures of fermented beverages and Non-alcoholic beverages, not elsewhere specified or included
21	1513	Coconut (copra) , palm kernel or babassu oil and fractions thereof, whether or not refined, but not chemically modified
22	2103	Sauces and preparations therefore mixed condiments and mixes seasonings mustard flour and meal and prepared mustard
23	0106	Other live animals
24	0307	"Molluscs, whether in shell or not, live, fresh, chilled, frozen, dried, salted or in brine smoked molluscs, whether in shell or not, whether or not cooked before or during the smoking process flours , meals and pellets of mollusks , fit for human consumption"
25	1512	Sunflower-seed, safflower or cotton-seed oil and fractions thereof, whether or not refined, but not chemically modified

(III) Situation of Import Tariff Quotas of China's Agricultural Products

Our country has implemented the import tariff quotas management system to part of agricultural products. Pursuant to the quota quantities as promised in China's schedule of concession and commitments for the trade of goods after entry into the WTO, determine the annual quantities of the agricultural products subject to the administration of import tariff quotas permitted to enter the market. The import of agricultural products within the quota quantities will apply the in-quota tax rate, and the import of agricultural products outside the quota quantities will be implemented under the relevant provisions of the *Regulations of the People's Republic of China on Import and Export Duties*. Meanwhile, matters such as the authorized agency responsible for allocating import quotas of agricultural products have also been explicitly stipulated.

1. List of agricultural products subject to the administration of import tariff quotas

In accordance with the Interim Measures for the *Administration of Import Tariff Quotas of Agricultural Products* (No. 4 Decree of the Ministry of Commerce and the State Development Planning Commission [2003]), our country implements the import tariff quotas management system to products including wheat, corn, rice, bean oil, colza oil, palm oil, sugar, cotton, wool and wool tops, etc. According to relevant commitments after China joined the WTO, the Ministry of Commerce issues the No.93 bulletin [2005] announcing that China has canceled the import tariff quotas and import state-run trade management of bean oil, palm oil and colza oil since Jan. 1st, 2006.

At present, the categories of agricultural products subject to the administration of import tariff quotas are respectively: wheat, corn, rice, sugar, cotton, wool and wool tops.

2. The import tariff quotas management system of agricultural products

In accordance with the *Interim Measures for the Administration of Import Tariff Quotas of Agricultural Products* (No. 4 Decree of the Ministry of Commerce and the State Development Planning Commission [2003]) and the *Cancel of Import Tariff Quotas and Import state-run trade management, and Implementation of Automatic*

Import License of Bean Oil, Palm Oil and Colza Oil (No.93 Decree of the Ministry of Commerce [2005]), within the year of the Gregorian calendar, the State will, pursuant to the quota quantities as promised in China's schedule of concession and commitments for the trade of goods after entry into the WTO, determine the annual quantities of the agricultural products subject to the administration of import tariff quotas permitted to enter the market.

(1) Basic requirements

Wheat, corn, rice, bean oil, colza oil, palm oil, sugar and cotton shall be subject to state-run trade quotas or non-state-run trade quotas. Those subject to state-run trade quotas shall be imported by state-run trade enterprises; those subject to non-state-run trade quotas may be imported by enterprises with the right of trade, and may also be imported directly by the final users with the right of trade.

Wool and wool tops shall be subject to the management of designated import enterprises, which shall be carried out in accordance with the *Measures for the Administration of Designated Management of Goods Import* (No. 21 Decree of the Ministry of Foreign Trade and Economic Cooperation [2001]) promulgated by the former Ministry of Foreign Trade and Economic Cooperation.

Import tariff quotas of agricultural products shall be global quotas.

The import tariff quotas of sugar, wool and wool tops shall be subject to the distribution of the Ministry of Commerce.

The import tariff quotas of wheat, corn, rice and cotton shall be subject to the distribution of the State Development and Reform Commission (SDRC) in conjunction with the Ministry of Commerce (MOFCOM).

The *Certificates of Import Tariff Quotas of Agricultural Products* are applicable to the imports in the trade forms of general trade, processing trade, barter trade, small-scale border trade, assistance, donation and other forms.

The products entering the bonded warehouses, bonded zones and export processing zones are exempted for the *Certificates of Import Tariff Quotas of Agricultural Products*.

(2) Application of quotas

The period for applying for the import tariff quotas of agricultural goods shall be between Oct. 15th and Oct. 30th of each year (with the exception of the distribution form of drawing the quotas by coming order on the basis of contract). The MOFCOM and the SDRC will promulgate the next year's total quantity of import tariff quotas of

each agricultural goods and the specific conditions for the application therefore as well as the tariff serial numbers and applicable tax rates determined by the Customs Tariff Committee of the State Council on the *International Business Daily*, the *China Economic Herald*, the MOFCOM website (<http://www.mofcom.gov.cn>) and the SDRC website (<http://www.sdpc.gov.cn>) one month before the application period. Sugar, wool and wool tops shall be subject to the promulgation of MOFCOM; and wheat, corn, rice and cotton shall be subject to the promulgation of SDRC.

The agencies authorized by MOFCOM shall, in light of the specific conditions promulgated, accept the applications on sugar, wool, wool tops and the relevant documents submitted, and transfer the qualified applications to the MOFCOM before Nov. 30th (with the exception of the distribution form of drawing the quotas by coming order on the basis of contract), with the copies thereof sent simultaneously to the SDRC.

The agencies authorized by SDRC shall, in light of the specific conditions promulgated, accept the applications on wheat, corn, rice, cotton and the relevant documents submitted, and transfer the qualified applications to the SDRC before Nov. 30th, with the copies thereof sent simultaneously to the MOFCOM.

(3) Distribution of quotas

Import tariff quotas shall be distributed on the basis of the quantity applied for by the applicants, their previous import performance, production capacity and other relevant commercial standards or on the basis of the form of drawing by coming order. The minimum quantity of distribution shall be determined on the basis of the commercially feasible shipping quantity of each category of agricultural products.

The MOFCOM and the SDRC will, before Jan. 1st of each year, issue to the final users the *Certificates of Import Tariff Quotas of Agricultural Products* via their respectively authorized agencies, to which the “Special Seal of the MOFCOM for Certificate of Import Tariff Quotas of Agricultural Products” and the “Special Seal of the SDRC for Certificate of Import Tariff Quotas of Agricultural Products” shall be affixed.

The quotas for state-run trade shall be indicated on the *Certificate of Import Tariff Quotas of Agricultural Products*.

(4) Valid term of quotas

The annual import tariff quotas of agricultural goods shall be implemented since Jan. 1st of each year, and shall be valid within the year of the Gregorian calendar. The

Certificates of Import Tariff Quotas for Agricultural Products shall be valid from Jan. 1st to Dec. 31st of its current year. The valid term of the *Certificates of Import Tariff Quotas for Agricultural Products* subject to the distribution form of drawing by coming order on the basis of contract shall be carried out in accordance with the detailed implementation rules promulgated.

For the agricultural products subject to import tariff quotas that are shipped out from the departing port before Dec. 31st of the year and shall arrive at the destination next year, the final user shall, by presenting the *Certificate of Import Tariff Quotas of Agricultural Products* and the relevant certifications, apply for term extension to the original agency that has issued the certificate. The said agency may extend the term after having examined the case, but the term may not be extended to a time later than the end of February of the next year.

(5) Implementation of quotas

The final users shall, pursuant to the relevant provisions of the State on import of the commodities concerned, sign the import contracts by themselves or entrust others to sign the contracts.

For the import of agricultural products for processing trade that is subject to the administration of tariff quotas, the customs shall handle the record-keeping procedures for the processing trade contracts by the *Certificate of Approval for Processing Trade* submitted by the enterprises, and handle the customs clearance procedures by the *Certificate of Import Tariff Quotas of Agricultural Products* submitted where “processing trade” has been indicated under the column of “trade modes”.

Where an enterprise of processing trade fails to re-export the processed products within the prescribed term, it shall go through the writing-off procedures for processing trade contracts within 30 days after the expiration of term. The customs will implement the procedures thereabout according to the relevant provisions on processing trade.

The *Certificate of Import Tariff Quotas of Agricultural Products* will apply the system of one certificate for several batches, that is, a final user in need of importing the products in several batches may go through the customs clearance procedures for several times by the *Certificate of Import Tariff Quotas of Agricultural Products*. A final user shall faithfully fill out the “Column for Final User’s Import” under the *Certificate of Import Tariff Quotas of Agricultural Products* and take the Certificate to the original Certificate issuing agency in exchange for the certificate for the part of quotas that have not gone through the customs clearance procedures.

The excess part of bulk cargos in a batch imported shall be no more than 5% of the batch.

The agricultural products entering the bonded warehouses, bonded zones, export processing zones from outside China and to which import tariff quotas are applied shall be subject to the examination before release and to the supervision and control conducted by the customs in accordance with the relevant provisions. For the agricultural products exiting or imported from outside the bonded warehouses, bonded zones, export processing zones and to which import tariff quotas are applied, the customs will handle the import procedures by the *Certificate of Import Tariff Quotas of Agricultural Goods* in accordance with the relevant provisions on the administration of import of goods.

A final user shall, within 20 office days after finishing the customs clearance procedures for the final batch of products whose quotas are indicated in the *Certificate of Import Tariff Quotas of Agricultural Products*, hand in the original of the first pages (customs procedure pages for the consignee) of the said Certificate signed and sealed by the customs to the original Certificate issuing agency.

A final user shall, before the end of January of the next year, return the original of the unused first pages (customs procedure pages for the consignee) of the Certificate of the current year to the original Certificate issuing agency.

(6) Adjustment of quotas

Where no contract is concluded before Aug. 15th of the current year for the state-run trade quotas of agricultural products distributed to a final user, the final user may entrust a trade enterprise of any kind with the right of trade to import the products upon the approval of the MOFCOM or the SDRC in accordance with the division of administration as provided in Article 7 of the present Measures. A final user with the right of trade may also import the products directly.

Where a final user holding the Certificate of Import Tariff Quotas of Agricultural Products fails to conclude an import contract for all the quotas already drawn in the current year or fail to fulfill the contract already concluded, it shall return the unfinished quotas to the original Certificate issuing organ before Sept. 15th.

The term for applying for the tariff quotas to be redistributed for the import of agricultural products shall be from Sept. 1st to Sept. 15th of each year (with the exception of the distribution form of drawing by coming order on the basis of contracts). The MOFCOM and the SDRC will respectively promulgate the specific conditions for

applying for the tariff quotas to be redistributed on the *International Business Daily*, the *China Economic Herald*, the MOFCOM website (<http://www.mofcom.gov.cn>) and the SDRC website (<http://www.sdpc.gov.cn>) one month before the application period. The applications shall be submitted to the MOFCOM or the SDRC via their respectively authorized agencies.

Sugar, wool and wool tops shall be subject to the promulgation of MOFCOM, and wheat, corn, rice and cotton shall be subject to the promulgation of SDRC.

A final user that has finished the import tariff quotas distributed of agricultural products before the end of October and has returned the originals of the first pages (customs procedure pages for the consignee) of the *Certificate of Import Tariff Quotas of Agricultural Products* may apply for the tariff quotas to be redistributed.

Before September, 30 of each year, the MOFCOM shall distribute the tariff quotas to be redistributed of bean oil, colza oil, palm oil, sugar, wool and wool tops to the final users (with the exception of the distribution form of drawing by coming order on the basis of contracts), and the SDRC shall distribute the tariff quotas to be redistributed of wheat corn, rice and cotton to the final users.

The tariff quotas to be redistributed shall, in light of the applying conditions promulgated, be distributed according to the form of drawing by coming order. The minimum quantity of distribution shall be determined on the basis of the commercially feasible shipping quantity of each category of agricultural products.

A final user who has obtained the redistributed quotas may entrust a trade enterprise of any kind with the right of trade to import the products. A final user with the right of trade may also import the products directly.

(IV) Distribution of Import Tariff Quotas of Agricultural Products in 2015

1. Distribution of import tariff quotas of grains

The promulgation of quota quantities, application conditions and distribution principles of import tariff quotas of grains in 2015 is subject to the No.22 bulletin of 2014 issued by the SDRC of PRC. On Jan. 5th, 2015, the SDRC promulgated the information of enterprises applying for import tariff quotas of grains in 2015.

(1) Quota quantities

The import tariff quota quantities of grains in 2015 are: 9.636 million tons of wheat, accounting for 10% of non-state-run trade; 7.2 million tons of corn, accounting for 40% of non-state-run trade; 5.32 million tons of rice (including: 2.66 million tons of long-grain rice, and 2.66 million tons of medium and short-grain rice), accounting for 50% of non-state-run trade.

(2) Application conditions

The basic conditions of applicants for import tariff quotas of grains in 2015 are: have registered in the Administration for Industry and Commerce prior to Oct. 1st, 2014; be with good financial condition, tax records and integrity status; strictly implement the statistical system of grain circulation, and be subject to the provisions of minimum and maximum stock quantities for grain operators; during the period of 2012-2014, be with no violation records in the aspects such as customs, industry & commerce, tax affairs, foreign exchange, inspection & quarantine, grain circulation and environmental protection, no credit record of non-performing loan, and no actions violating the *Interim Measures for the Administration of Import Tariff Quotas of Agricultural Products*.

On the premise of such conditions above, applicants for import tariff quota of wheat must also meet one of the following conditions:

State-run trade enterprises;

Enterprises with actual import performance (excluding agent import) in 2014;

Flour manufacturing enterprises with wheat consumption more than 100,000 tons in 2013 or 2014;

Food manufacturing enterprises with flour consumption more than 50,000 tons in 2013 or 2014;

Enterprises engaged in the processing trade and using wheat or flour as the raw material, without actual import performance in 2014 but with the import-export operation right and the certificate of production capacity on processing trade provided by local commerce authorities.

Applicants for import tariff quota of corn and wheat must also meet one of the following conditions:

State-run trade enterprises;

Enterprises with actual import performance (excluding agent import) in 2014;

Feed manufacturing enterprises with corn consumption more than 50,000 tons in

2013 or 2014;

Other manufacturing enterprises with corn consumption more than 150,000 tons in 2013 or 2014;

Enterprises engaged in the processing trade and using corn as the raw material, without actual import performance in 2014 but with the import-export operation right and the certificate of production capacity on processing trade provided by local commerce authorities.

Applicants for import tariff quota of rice (the long-grain rice and the medium and short-grain rice need respective application) must also meet one of the following conditions:

State-run trade enterprises;

Enterprises with actual import performance (excluding agent import) in 2014;

Grain enterprises with the qualification of grain wholesale and retail, reaching the amount of rice sales more than RMB 100 million in 2013 or 2014;

Food manufacturing enterprises with rice consumption more than 50,000 tons in 2013 or 2014;

Enterprises engaged in the processing trade and using rice as the raw material, without actual import performance in 2014 but with the import-export operation right and the certificate of production capacity on processing trade provided by local commerce authorities.

The group enterprises with multiple processing plants must separately apply for and use the import quotas in the name of each independent processing plant. The trading enterprises applying for the import tariff quota of rice can choose to submit the application in the name of group headquarters or subordinate enterprises, but the group headquarters and subordinate enterprises shall not submit the application in the meantime.

(3) Quota usage

The above import tariff quotas of grains must be used by applicants themselves, and the imported goods shall be processed and operated by the enterprises, among which the imported wheat and corn shall be processed for use by the plants; and the imported rice shall be organized for sales in the name of the enterprises.

2. Distribution of import tariff quota of cotton

The promulgation of quantity, application conditions and distribution principles of

import tariff quota of cotton in 2015 is subject to the No.22 bulletin of 2014 issued by the SDRC of PRC.

(1) Quota quantities

The import tariff quota quantity of cotton in 2015 is 894,000 tons, among which the state-run trade accounts for 33%.

(2) Application conditions

The basic conditions of applicants for import tariff quota of cotton in 2015 are: have registered in the Administration for Industry and Commerce prior to Oct. 1st, 2014; be with good financial condition, tax records and integrity status; during the period of 2012-2014, be with no violation records in the aspects such as customs, industry & commerce, tax affairs, foreign exchange, inspection & quarantine and environmental protection, and with no credit record of non-performing loan; have performed social responsibilities related to business; Without actions violating the *Interim Measures for the Administration of Import Tariff Quotas of Agricultural Products*.

On the premise of such conditions above, applicants for import tariff quota of cotton must also meet one of the following conditions:

State-run trade enterprises;

Enterprises with actual import performance (excluding agent import) in 2014;

Cotton-spinning enterprises with spinning equipment more than 50,000 spindles.

3. Distribution of import tariff quota of sugar

The preparation of the quantity and application conditions of import tariff quota of sugar in 2015 is subject to the *Detailed Rules and Regulations on Application and Distribution of Import Tariff Quota of Sugar in 2015* (No.66 Decree of the MOFCOM [2014]).

(1) Total quantity of tariff quota

The total quantity of import tariff quota of sugar in 2015 is 1.945 million tons, among which the state-run trade accounts for 70%.

(2) Types of applicant enterprises

State-run trade enterprises;

Central enterprises with the function of state reserve;

Enterprises with actual import performance holding the tariff quota of sugar in 2014 (hereinafter referred to as applicants with actual performance);

Sugar enterprises with daily processing capacity more than (equal to) 600 tons, registered capital more than (equal to) RMB 10 million, and annual sales of sugar more than (equal to) RMB 450 million;

Enterprises engaged in the processing trade, using sugar as the raw material.

(3) Basic conditions of applicants

Have registered in the Administration for Industry and Commerce prior to Oct. 1st, 2014, and conducted the publicity of annual reports;

During the period of 2012-2014, be with no violation records in the aspects of customs, foreign exchange, industry & commerce, tax affairs, quality inspection, social security, environmental protection, self-discipline, etc.;

Without actions violating the *Interim Measures for the Administration of Import Tariff Quotas of Agricultural Products* and the *Detailed Rules and Regulations on Application and Distribution of Import Tariff Quota of Sugar in 2014*.

(4) Application materials

Application report for import tariff quotas of agricultural products;

Application form for import tariff quotas of agricultural products;

Copy of business license for enterprise as a legal person (duplicate);

Copies of the 2014 *Certificates of Import Tariff Quotas of Agricultural Products* of sugar and the customs declaration for importation endorsed and signed by customs;

The tax clearance certificate of 2013 proofing the enterprise has paid tax by law.

The applicants with actual performance shall provide the first four items of materials above; the applicants without actual performance shall provide the first, second, third and fifth items of materials. If an applicant without actual performance was constructed and put into operation after 2009, it shall also provide the competent department with an approval document of feasibility study report of the construction project (or an approval document of project proposals) and the completion acceptance report.

(5) Distribution of quota

If the total quantity of import tariff quota can satisfy applications of qualified applicants, the distribution of quota shall be accordant with the application quantities of applicants;

If the total quantity of import tariff quota cannot satisfy applications of qualified applicants, applicants with actual performance can get the preferential quota, and the distribution of quota shall be accordant with actual import performance, production

capacity and sales of applicants in the last year, as well as other relevant commercial standards.

IV. List of China's Non-agricultural Imports from Cambodia

(I) Selection Method

The non-agricultural products, such as industrial products, account for the major share of China-ASEAN trade. With the further promotion of China-ASEAN free trade area, the tariff level of products like industrial products has been significantly reduced, with relatively high degree of trade & investment liberalization and facilitation. In accordance with the ordering of sum of non-agricultural products that China imported from Cambodia in 2014, regarding the HS 2-bit code as a basis of classification, the non-agricultural products ranking at the top are selected in the first 10 Chapters; then regarding the HS 4-bit code as a basis of classification, the non-agricultural products ranking in the top 3 of the first 10 Chapters above are selected respectively.

(II) List of Main Non-agricultural Imports

The list of main non-agricultural products China imported from Cambodia in 2014 is formed according to UNCOMTRADE after the top 30 kinds of products are selected on the classification bases of HS 2-bit and HS 4-bit codes. In order to facilitate Cambodia suppliers' export of relevant products to China, the Supervision Requirements of main non-agricultural products imported are listed in appendixes (see details in Appendix I and III).

List of China's Main Non-agricultural Imports from Cambodia

Number	HS Code	Article Description
1	4403	Wood in the rough, whether or not stripped of bark or sapwood, or roughly squared
2	4407	Wood sawn or chipped lengthwise, sliced or peeled, whether or not planed, sanded or finger-jointed, of a thickness exceeding 6 mm
3	4412	Plywood, veneered panels and similar laminated wood
4	6110	Jerseys , pullovers , cardigans , waistcoats and similar articles, knitted or crocheted
5	6109	T-shirts, singlets and other vests, knitted or crocheted

6	6111	Babies' garments and clothing accessories, knitted or crocheted
7	6204	Women's or girls' suits, ensembles ,jackets, blazers, dresses, skirts, divided skirts, trousers, bib and brace overalls, breeches and shorts (other than swimwear)
8	6203	Men's or boys' suits, ensembles, jackets, blazers, trousers, bib and brace overalls, breeches and shorts (other than swim wear)
9	6212	Brassieres, girdles, corsets, braces, suspenders, garters and similar articles and parts thereof, whether or not knitted or crocheted
10	8501	Electric motors and generators (excluding generating sets)
11	8544	Insulated (including enamelled or anodized) wire, cable (including co-axial cable) and other insulated electric conductors, whether or not fitted with connectors optical fibre cables, made up of individually sheathed fibres, whether or not assembled with electric conductors or fitted with connectors
12	8518	Microphones and stands therefore loudspeakers, whether or not mounted in their enclosures headphones earphones, whether or not combined with a microphone, and sets consisting of a microphone and one or more loudspeakers audio-frequency electric amplifiers electric sound amplifier sets
13	4001	Natural rubber, balata, gutta-percha, guayule, chicle and similar natural gums, in primary forms or in plates, sheets or strip
14	4005	Compounded rubber, unvulcanized, in primary forms or in plates, sheets or strip
15	4015	Articles of apparel and clothing accessories (including gloves), for all purposes, of vulcanized rubber other than hard rubber
16	9013	Liquid crystal devices not constituting articles provided for more specifically in other headings lasers, other than laser diodes other optical appliances and instruments, not specified or included elsewhere in this Chapter
17	9001	Optical fibres and optical fibre bundles optical fibre cables, other than those of heading No. 8544 sheets and plates of polarizing material lenses (including contact lenses) , prisms, mirrors and other optical elements, of any material, unmounted, other than such elements of

		glass not optically worked
18	9026	Instruments and apparatus for measuring or checking the flow, level, pressure or other variables of liquids or gases (for example, flow meters, level gauges, manometers, heat meters), excluding instruments and apparatus of heading No. 90. 14, 90. 15, 90. 28 or 90. 32
19	6403	Footwear with outer soles of rubber, plastics, leather or composition leather and uppers of leather
20	6404	Footwear with outer soles of rubber, plastics, leather or composition leather and uppers of textile materials
21	6402	Other footwear with outer soles and uppers of rubber or plastics
22	6310	Used or new rags, scrap twine, cordage, rope and cables and worn out articles of twine ,cordage , rope or cables , of textile materials
23	6307	Other made up articles , including dress patterns
24	6301	Blankets and travelling rugs

V. Process Management of China's Imports from Cambodia

According to relevant laws and regulations of the State Administration for Quality Supervision and Inspection and Quarantine (AQSIQ) and the General Administration of Customs, the products that China imports from Cambodia shall be subject to inspection and quarantine, and these imported goods can enter into the domestic market only after passing the supervision of customs.

(I) Inspection & Quarantine

During the entry inspection declaration, the inspection form for entry goods shall be filled in, and relevant documents such as the contracts, invoices and bills of lading shall be provided according to the *Provisions of Entry-Exit Inspection and Quarantine Declaration*. In addition, relevant documents shall be provided according to requirements in case of the following conditions.

1. Relevant certificates shall be provided for goods subject to safety quality

licensing and sanitary registration, or required to be approved and reviewed.

2. For goods requiring quality inspection, foreign quality certificates or quality guarantees, product use instructions as well as relevant standards and technical data shall be provided; for goods delivered with samples, the reference samples must be attached; for goods settled accounts per grade or conditioned weight, an application of weight survey shall be submitted in the meantime.

3. During the entry inspection declaration for waste, the *Approval Certificate for Imported Waste* signed and issued by national environmental protection departments, the certificate for pre-shipment inspection signed and issued by authorized inspection agencies, etc. shall be provided.

4. For goods applying for damage survey, relevant documents which can prove the situation of damage, such as the damage report of tallying, business records of railways, air traffic accident reports or marine accident reports, shall also be provided.

5. For goods applying for weight (quantity) survey, the detailed list of weight, the list of tallying, etc. shall be also provided.

6. For goods through acceptance of receiving and using departments or tested by other units, the acceptance report or test results, the detailed list of weight, etc. shall be attached with the goods.

7. International travelers entering in the country shall fill in the quarantine declaration form on entry.

8. For animals and plants as well as corresponding products entering in the country, the trade contracts, invoices and certificates of origins shall be provided, and meanwhile, the official quarantine certificate of exporting countries or regions also must be provided; For those required to transact the approval procedures of entry quarantine, the entry quarantine permits for animals and plants shall also be provided.

9. During the inspection declaration of transited animals and plants as well as corresponding products, waybills and quarantine certificates officially provided by the exporting countries or regions shall be held; when transiting animals, transit permits for animals and plants signed and issued by the State Administration of Inspection and Quarantine shall also be submitted.

10. During the entry inspection declaration for transportation and containers, quarantine certificates shall be provided, and health conditions of relevant personnel shall be declared.

11. Entry passengers and traffic personnel carrying companion animals shall

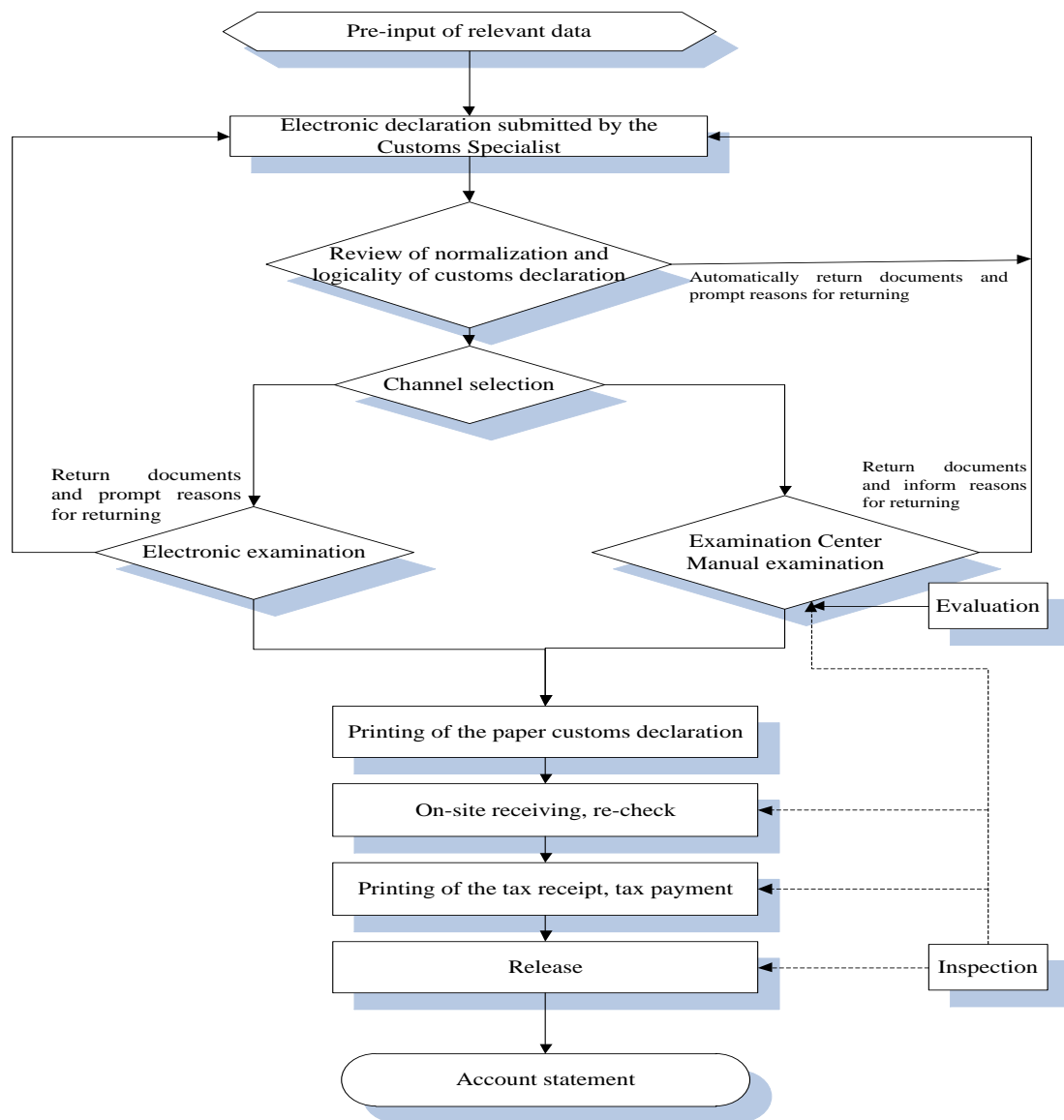
provide the quarantine certificate for entry animals and the vaccination certificate.

12. For articles banned from entry but need entry due to special requirements such as scientific research, the certificate of special permission signed and issued by the State Administration of Inspection and Quarantine must be provided.

13. For the entry of special articles, relevant approval documents or specified documents shall be provided.

(II) Customs Clearance

The procedure of customs clearance for China's imported products is composed of five basic links, including declaration, inspection, taxation, release and clearance. Declaration refers to the behaviors that a consignee or his agent of imported goods submits the verification certificate to customs and applies for the transaction of customs affairs. Inspection refers to the checks conducted by customs according to laws to the imported goods declared by the declarant, so as to confirm the conformity of documents, certificates and goods, check if there is any violation of laws and if the entry is legal, and prepare conditions for the next customs clearance procedure. Taxation means that customs charge the tariff for imported goods and the taxes for imported links according to relevant national policies, laws and regulations, including tariff classification, application of the tariff rate and import linkage tax rate, approval and determination of the duty-paying value, calculation and payment of taxes. Release is the last link of on-site operations of port customs supervision. Clearance means that customs implement inspections on the goods requiring follow-up management after the port release within a specified period, and deal with the goods requiring supplementary certificates and payment for overdue taxes till all of customs supervision procedures are fully completed. The flow chart of China's product import is as follow:



For the customs clearance of agricultural products subject to import quotas management, the *Certificates of Import Tariff Quotas of Agricultural Products* shall be submitted according to relevant provisions of the *Interim Measures for the Administration of Import Tariff Quotas of Agricultural Products* (No. 4 Decree of the Ministry of Commerce and the State Development Planning Commission [2003]).

(III) Cooperation between customs and inspection & quarantine departments

According to the *Notification on the Comprehensive Promotion of Cooperation between Customs and Inspection & Quarantine Departments Issued by the General*

Administration of Customs and the State Administration for Quality Supervision and Inspection and Quarantine (No.161 Decree of the General Administration of Customs and AQSIQ [2014]), since Aug. 1st, 2014, the “3 Ones” of cooperation between customs and inspection & quarantine departments has been comprehensively promoted to all directly competent customs and inspection & quarantine departments, all sites of customs clearance, and all goods and articles requiring customs declaration and inspection declaration pursuant to the laws, so as to achieve the maximum utilization of facilitation measures provided by customs and inspection & quarantine departments to benefit enterprises.

The “3 Ones” of cooperation between customs and inspection & quarantine departments refers to the “one-off declaration, one-off inspection and one-off release”. The “one-off declaration” refers to “one-off input and respective declarations”, which means that an enterprise only needs to input data for once, and the data will be respectively sent to customs and inspection & quarantine departments; the “one-off inspection” refers to “one-off unpacking that customs and inspection & quarantine departments jointly implement check/inspection & quarantine pursuant to the laws”, which means that both parties of customs and inspection & quarantine departments can jointly implement check/inspection & quarantine to the same batch of goods as required according to their different responsibilities and pursuant to the laws; the “one-off release” refers to “networking check and release of customs and inspection & quarantine departments”, which means that customs and inspection & quarantine departments respectively send the check and release information for goods arriving at ports, and the enterprise can transact procedures for taking delivery of goods by the check and release information of customs and inspection & quarantine departments.

Appendix I

List of Supervision Requirements of Customs

License or Official Document Codes	License or Official Document Names
1	Import Licence of the People's Republic of China
2	Import License for Dual-use Items and Technologies
3	Export License for Dual-use Items and Technologies
4	Export Licence of the People's Republic of China
5	Temporary Textiles Export Licence of the People's Republic of China
6	Prohibited Import of Used Mechanical and Electric Products
7	Automatic Import License of the People's Republic of China
8	Export Forbidden Items
9	Import Forbidden Items
A	Certificate of Inspection for Goods Inward
B	Certificate of Inspection for Goods Outward
D	Certificate of Inspection for Goods Inward(Used for Rough Diamonds)
E	Export Permit for Endangered Wild Animals
F	Import Permit for Endangered Wild Animals
G	Export License for Dual-use Items and Technologies(Directionality)
I	Psychotropic Drug Import and Export License
J	The export license or the people's Bank of China import approval of gold products
O	Automatic Import License (Used and New Mechanical and Electrical Products)
P	Certificate of Approval for Import of Wastes
Q	Drug Import Customs Clearance
S	Certificate for the Import and Export of Pesticides
T	License of Transporting Cash in Foreign Currency Inward and Outward
W	Import Authorization for Narcotic Drugs
X	Clearance Notification for Environmental Management on Import/Export of Toxic Chemicals
Z	Certificate of of Approval for the Import of Audio and Video Products or Claimed Programs
e	Certificate of Cotton Import Tariff Quota at Out-Quota Preferential Duty Rate
s	Certificate of the Use Identification of Goods under ITA Tax
t	Import Tariff Quota Certificate
v	Automatic Import License of the People's Republic of China (Processing Trade)
x	Export Licence of the People's Republic of China (Processing Trade)
y	Export Licence of the People's Republic of China (Small Amount of Border Trade)

Appendix II

Supervision Requirements of Customs of Main Agricultural Imports		
HS Code	Code	Article Description
10 06		Rice
		-Rice in husk (Paddy or rough)
		-Seed
1006 1011		-Long grain
1006 1011 01	4xAByt	Rice in husk (paddy or rough), shien rice (long-grained non-glutinous rice), seed (in-quota)
1006 1011 90	4xABy	Rice in husk (paddy or rough) , shien rice (long-grained non-glutinous rice), seed (out-quota)
1006 1019		-Other
1006 1019 01	4xAByt	Other rice in husk (paddy or rough) , seed (in-quota)
1006 1019 90	4xABy	Other rice in husk (paddy or rough) , seed (out-quota)
		-Other
1006 1091		-Long grain
1006 1091 01	4xAByt	Other rice in husk (paddy or rough), long grain (long-grained non-glutinous rice) (in-quota)
1006 1091 90	4xABy	Other rice in husk (paddy or rough), long grain (long-grained non-glutinous rice) (out-quota)
1006 1099		-Other
1006 1099 01	4xAByt	Other rice in husk (paddy or rough) (in-quota)
1006 1099 90	4xABy	Other rice in husk (paddy or rough) (out-quota)
		-Husked (brown) Rice
1006 2010		-Shien Rice
1006 2010 01	4xAByt	Husked (brown) rice, long grain(long-grained non-glutinous rice) (in-quota)
1006 2010 90	4xABy	Husked (brown) rice, long grain (long-grained non-glutinous rice) (out-quota)
1006 2090		-Other
1006 2090 01	4xAByt	Other husked(brown) rice (in-quota)
1006 2090 90	4xABy	Other husked (brown) rice (out-quota)
		Semi-milled or wholly missed Rice, whether or not polished or glazed
1006 3010		---Long grain
1006 3010 01	4xAByt	Semi-milled or wholly milled rice, long grain (long-grained non-glutinous rice) whether or not polished or glazed (in-quota)
1006 3010 90	4xABy	Semi-milled or wholly milled rice, long grain (long-grained non-glutinous rice) [whether or not polished or glazed (out-quota)]

1006 3090		-Other
1006 3090 01	4xAByt	Other semi-milled or wholly milled rice [whether or not polished or glazed (in-quota)]
1006 3090 90	4xABy	Other semi-milled or wholly milled rice [whether or not polished or glazed (out-quota)]
		-Broken ERIC
1006 4010		---Long grain
1006 4010 01	4xAByt	Broken rice, long grain (long-grained non-glutinous rice) (in-quota)
1006 4010 90	4xABy	Broken rice, long grain (long-grained non-glutinous rice) (out-quota)
1006 4090		-Other
1006 4090 01	4xAByt	Other broken rice (in-quota)
1006 4090 90	4xABy	Other broken rice (out-quota)
07 14		Manioc, arrowroot, salep, Jerusalem artichokes, sweet potatoes and similar roots and tubers with high starch or inulin content, fresh, chilled, frozen or dried, whether or not sliced or in the form
		-Manioc (cassava)
0714 1010	AB	-Fresh
0714 1020	AB	-dried
0714 1030	AB	---Chilled or frozen
		-Sweet potatoes
		-Fresh
0714 2011	AB	-for cultivation
0714 2019	AB	-Other
0714 2020	AB	-dried
0714 2030	AB	---Chilled or frozen
0714 3000	AB	-Yams (dioscoreae spp.)
0714 4000		-Taros (colocasia spp.)
0714 4000 01	AB	Fresh, chilled taros (colocasia spp.) (whether or not sliced or made granute taros are also called yunai belong to Spath hyttum of the Araceae vegetables, classified into ground taros and river taros)
0714 4000 90	AB	Frozen, dried taros (colocasia spp.) (whether or not sliced or made granute taros are also called yunai belong to Spath hyttum of the Araceae vegetables, classified into ground taros and river taros)
0714 5000	AB	-Yautia (Xanthosoma spp.)
		-Other
0714 9010	AB	-water chestnut
		---Lotus (Nelumbo nucifera) rootstock
0714 9021	AB	-for cultivation
0714 9029	AB	-Other

0714 9090		-Other
0714 9090 10	ABFE	Tubers of orchid family, fresh, chilled, frozen or dried
0714 9090 91	ABFE	Other endangered similar roots and tubers with high starch or inulin content (including sago pith, whether or not sliced or made gramule, fresh, chilled, frozen, dried)
0714 9090 99	AB	Other similar roots and tubers with high starch or inulin content (including sago pith whether or not sliced or in the form of pellets fresh, chilled, frozen, dried)
11 08		Starches inulin
		-Starches
1108 1100	AB	-wheat starch
1108 1200	AB	-Maize (corn) starch
1108 1300	AB	-Potato starch
1108 1400	AB	-Manioc (cassava) starch
1108 1900	AB	-Other Starches
1108 2000	AB	-Inulin
03 06		Crustaceans , whether in shell or not, live, fresh, chilled, frozen, dried, salted or in brine smoked crustaceans, whether or not cooked before or during the smoking process crustaceans, in shell, cooked by steaming or by boiling in water, whether or not chilled, frozen, dried, salted or in brine flours, meals and pellets of crustaceans, fit for human consumption
0306 1100	AB	- Reef shrimp and shrimp (Palinurus lobster genus Rock lobster genus)
0306 1200	AB	-Ao lobster (Ao lobster genus)
		--crabs
0306 1410	AB	-Swimming crab
0306 1490	AB	-Other
0306 1500	AB	-Norway Lobsters (Nehrops Norvegicus)
		--Cold-water shrimp and prawns (pandalus, spp., Crangon crangon)
		---Cold-water shrimp
0306 1611	AB	-Shelled
0306 1612	AB	-Other, pandaius borealis
0306 1619	AB	-Other
		---Cold-water prawns
0306 1621	AB	-Shelled
0306 1629	AB	-Other
		-Other shrimps and prawns
		-shrimps
0306 1711	AB	-Shelled
0306 1719	AB	-Other
		-prawns

0306 1721	AB	-Shelled
0306 1729	AB	-Other
		-Other including flours, meals and pellets of crustaceans, fit for human consumption
		-Freshwater crawfish
0306 1911	AB	-Shelled
0306 1919	AB	-Other
0306 1990	AB	-Other
		-not Frozen
		-Reef shrimp and shrimp (Palinurus, Lobster genus, Rock lobster genus)
0306 2110	AB	-for cultivation
0306 2190	AB	-Other
		-Ao lobster(Ao lobster genus)
0306 2210	AB	-for cultivation
0306 2290	AB	-Other
		--Crabs
0306 2410	AB	-for cultivation
		-Other
0306 2491	AB	-Freshwater crabs live
0306 2492	AB	-Swimming crab
0306 2499	AB	-Other
		-Norway Lobsters (Nephrops Norvegicus)
0306 2510	AB	-for cultivation
0306 2590	AB	-Other
		--Cold-water shrimp and prawns (pandalus spp., Crangon crangon)
0306 2610	AB	-for cultivation
0306 2620	AB	-prawns , Fresh or chilled
0306 2690		-Other
0306 2690 01	AB	Cold-water shrimp , fresh or chilled
0306 2690 90	AB	Cold-water prawns and shrimp, whether in shell or not live dried salted or in brine (including smoked, whether in shell or not, whether or not cooked before or during the smoking process in shell, cooked by steaming or by boiling in water)
		-Other shrimps and prawns
0306 2710	AB	-for cultivation
0306 2720	AB	-prawns , Fresh or chilled
0306 2790		-Other
0306 2790 01	AB	Other shrimp , fresh or chilled
0306 2790 90	AB	Other prawns and shrimp, whether in shell or not, live, dried, salted or in brine(including smoked, whether or not cooked before or during the smoking process in shell, cooked by steaming or by boiling in water)

		-Other including flours, meals and pellets of crustaceans, fit for human consumption
0306 2910	AB	-for cultivation
0306 2990	AB	-Other
23 03		Residues of starch manufacture and similar residues, beet-pulp, bagasses and other waste of sugar manufacture, brewing or distilling dregs and waste , whether or not in the form of pellets
2303 1000	AB	-Residues of starch manufacture and similar Residues
2303 2000	AB	-Beet-pulp , bagasses and Other Waste of sugar manufacture
2303 3000	AB	-Brewing or distilling dregs and Waste
2303 3000 10	AB	Distiller' s grains with or without Solubles
2303 3000 90	AB	Other brewing or distilling dregs and waste
17 01		Cane or beet sugar and chemically pure sucrose, in solid form
		-Raw sugar not containing added flavouring or colouring matter
1701 1200		-Beet sugar
1701 1200 01	ABt	Raw beet sugar not containing added flavouring or colouring matter[sugar whose content of sucrose by weight, in the dry state, corresponds to a polarimeter reading of less than 99.5 ° (in-quota)]
1701 1200 90	AB	Raw beet sugar not containing added flavouring or colouring matter [sugar whose content of sucrose by weight, in the dry state, corresponds to a polarimeter reading of less than 99.5 ° (out-quota)]
1701 1300		--Cane sugar in subheading note 2 to this chapter
1701 1300 01	ABt	Of cane sugar in subheading note 2 to this chapter not containing added flavouring or colouring matter [whose content of sucrose by weight, in the dry state, corresponds to a polarimeter reading of 69° or more but less 93 ° (in - quota)]
1701 1300 90	AB	Of cane sugar in subheading note 2 to this chapter not containing added flavouring or colouring matter [whose content of sucrose by weight, in the dry state, corresponds to a polarimeter reading of 69° or more but less 93 ° (out - quota)]
1701 1400		-Other cane sugar
1701 1400 01	ABt	Other cane sugar not containing added flavouring or colouring matter [sugar whose content of sucrose by weight, in the dry state , corresponds to a polarimeter reading of less than 99.5 ⁰ (in - quota)]

1701 1400 90	AB	Other cane sugar not containing added flavouring or colouring matter [sugar whose content of sucrose by weight, in the dry state , corresponds to a polarimeter reading of less than 99.5 ⁰ (out - quota)]
		-Other
1701 9100		--containing added flavouring or colouring matter
1701 9100 01	ABt	Cane or beet sugar and chemically pure sucrose, containing added flavouring or colouring matter (in-quota)
1701 9100 90	AB	Cane or beet sugar and chemically pure sucrose, containing added flavouring or colouring matter (out-quota)
		-Other
1701 9910		---Granulated sugar
1701 9910 10	ABt	Granulated sugar (in-quota)
1701 9910 90	AB	Granulated sugar (out-quota)
1701 9920		-Superfine sugar
1701 9920 01	BA	Superfine sugar (in-quota)
1701 9920 90	BA	Superfine sugar (out-quota)
1701 9990		-Other
1701 9990 01	ABt	Other refined sugar (in-quota)
1701 9990 90	AB	Other refined sugar (out-quota)
18 05		Cocoa powder, not containing added sugar or other sweetening matter
1805 0000	AB	Cocoa powder, not containing added sugar or other sweetening matter
08 01		Coconuts, Brazil nuts and cashew- nuts, fresh or dried, whether or not shelled or peeled
		-Coconuts
0801 1100	AB	-Desiccated
0801 1200	AB	-in the inner shell(endocarp)
		-Other
0801 1910	AB	-Seedlings
0801 1990	AB	-Other
		-Brazil nuts
0801 2100	AB	--in shell
0801 2200	AB	-Shelled
		-Cashew nuts
0801 3100	AB	--in shell
0801 3200	AB	-Shelled
12 07		Other oil seeds and oleaginous fruits, whether or not broken
		-Palm fruit and Palm nut
1207 1010	AB	-Seed
1207 1010 10	ABEF	Endangered palm fruit and palm nut seed

1207 1010 90	AB	Other palm fruit and palm nut, seed
1207 1090	AB	-Other
1207 1090 10	ABEF	Other endangered palm fruit and palm nut(whether or not broken)
1207 1090 90	AB	Other palm fruit and palm nut (whether or not broken)
		-Cotton Seeds
1207 2100	AB	-Seeds
1207 2900	AB	-Other
		-Castor oil Seeds
1207 3010	AB	-Seed
1207 3090	AB	-Other
		-Sesamum Seeds
1207 4010	AB	-Seeds for cultivation
1207 4090	AB	-Other
		-Mustard Seeds
1207 5010	AB	-Seeds for cultivation
1207 5090	AB	-Other
		-Safflower Seeds
1207 6010	AB	-Seed
1207 6090	AB	-Other
		-Melon Seeds
1207 7010	AB	-Seed
		-Other
1207 7091	AB	-Black Melon Seeds
1207 7092	AB	-red Melon Seeds
1207 7099	AB	-Other
		-Other
1207 9100	AB	-Poppy Seeds
		-Other
1207 9910	AB	-Seed
		-Other
1207 9991	AB	-Shea nuts (karite nuts)
1207 9999	AB	-Other
22 08		Undenatured ethyl alcohol of an alcoholic strength by volume of less than 80% vol; spirits, liqueurs and other spirituous beverages
2208 2000	AB	-spirits obtained by distilling Grape wine or Grape mare
2208 3000	AB	-Whiskies
2208 4000	AB	-Rum and other spirit obtained by distilling fermented sugarcane products
2208 5000	AB	-Gin and geneva
2208 6000	AB	-Vodka
2208 7000	AB	-Liqueurs and cordials

		-Other
2208 9010	ABFE	-Tequila , Mezcal
2208 9010	ABFE	Endangered Tequila
2208 9010	AB	Other Tequila
2208 9020	AB	---Chinese distilled spirits
2208 9090		-Other
2208 9090 01	AB	Undenatured ethyl alcohol of an alcoholic strength by volume of less than 80% vol
2208 9090 21	ABEF	Potato spirits, endangered wild animals and plants
2208 9090 29	AB	Other spirits by distilling potatoes
2208 9090 91	ABEF	Spirits and spirituous beverages, contains endangered wild animals and plants
2208 9090 99	AB	Other spirits and spirituous beverages
22 03		Beer made from malt
2203 0000	AB	Beer made from malt
03 01		Live fish
		-Ornamental fish
0301 1100		-Freshwater fish
0301 1100 10	BEF	Ornamental endangered freshwater fish
0301 1100 90	AB	Ornamental other freshwater fish
0301 1900		-Other
0301 1900 10	BFE	Ornamental endangered not freshwater fish
0301 1900 90	AB	Ornamental other not freshwater fish
		-Other live fish
		Trout (Salmo trutta, Oncorhynchus mykiss, Oncorhynchus clarkii, Oncorhynchus aguabonita, Oncorhynchus gilae, Oncorhynchus apache and Oncorhynchus chrysogaster)
0301 9110	AB	-Fry
0301 9190	AB	-Other
		-Eels (Anguilla spp.)
0301 9210		-Fry
0301 9210 10	ABE	Fry of marbled eels (Anguilla marmorata)
0301 9210 20	BEF	Fry of European eels
0301 9210 90	AB	Other fry of eels (Anguilla marmorata)
0301 9290		-Other
0301 9290 10	ABE	Marbled eels (Anguilla marmorata)
0301 9290 20	BEF	European eels
0301 9290 90	AB	Other live eels (Anguilla marmorata)
		--Cyprinus carpio, Carassius auratus, Ctenopharyngodon idella, Hypophthalmichthys spp. , Cirrhinus spp. , Mylopharyngodon piceus
0301 9310	AB	-Fry
0301 9390	AB	-Other

		-Atlantic and pacific bluefin tunas (Thunnus thynnus, Thunnus orientalis)
0301 9410	AB	-Fry
		-Other
0301 9491	AB	-Atlantic bluefin tunas
0301 9492	AB	-Pacific bluefin tunas
		-Southern bluefin tunas (thunnus maccoyii)
0301 9510	AB	-Fry
0301 9590	AB	-Other
		-Other
		-Fry
0301 9911	AB	-of perches
0301 9912	ABFE	-of sturgeon
0301 9919		-Other
0301 9919 10	ABFE	Other endangered fry
0301 9919 90	AB	Other fry
		-Other
0301 9991	AB	-Tilapia
0301 9992	AB	-Puffer fish
0301 9993		-Other cyprinidae fish
0301 9993 10	ABFE	Other endangered live carp
0301 9993 90	AB	Other live carp(Cyprinus carpio, Carassius carassius, Ctenopharyngodon idellus, Hypophthalmichthys spp., Cirrhinus spp. , Mylopharyngodon piceus)
0301 9999		-Other
0301 9999 10	ABFE	Other endangered live fish
0301 9999 90	AB	Other live fish
20 09		Fruit juices (including grape must) and vegetable juices, unfermented and not containing added spirit, whether or not containing added sugar or other sweetening matter
		-Orange juice
2009 1100	AB	-Frozen
2009 1200	AB	-not frozen of a Brix value not exceeding 20
2009 1900	AB	-Other
		-Grapefruit (including pomelo) juice
2009 2100	AB	-Of a Brix value not exceeding 20
2009 2900	AB	-Other
		-Juice of any other single citrus fruit
		-Of a Brix value not exceeding 20
2009 3110	AB	-Lemon juice
2009 3190	AB	-Other
		-Other
2009 3910	AB	-Lemon juice

2009 3990	AB	-Other
		-Pineapple juice
2009 4100	AB	-Of a Brix value not exceeding 20
2009 4900	AB	-Other
2009 5000	AB	-Tomato juice
		-Grape juice (including Grape must)
2009 6100	AB	-Of a Brix value not exceeding 30
2009 6900	AB	-Other
		-apple juice
2009 7100	AB	-Of a Brix value not exceeding 20
2009 7900	AB	-Other
		-juice of any Other single fruit or Vegetable
2009 8100	AB	--Cranberry juice
		-Other
		-fruit juice
2009 8912	AB	-Mango juice
2009 8913	AB	-Passion-fruit juice
2009 8914	AB	----Guva juice
2009 8915	AB	-pear juice
2009 8919	AB	-Other
2009 8920	AB	---Vegetable juice
		-Mixtures of juices
2009 9010	AB	-Of fruit juices
2009 9090	AB	-Other
33 01		Essential oils (terpeneless or not) , including concretes and absolutes resinoids extracted oleoresins concentrates of essential oils in fats, in fixed oils, in waxes or the like, obtained by enfleurage or maceration; terpenic byproducts of the deterpenation of essential oils aqueous distillates and aqueous solutions of essential oils
		-Essential oils of Citrus fruit
3301 1200	A	-of Orange
3301 1300	A	-of Lemon
		-Other
3301 1910	A	-of Lime
3301 1990	A	-Other
		-Essential oils Other than those of Citrus fruit
3301 2400	A	-of peppermint (Mentha piperita)
3301 2500 暂	A	-of Other mints
		-Other
3301 2910	ABE	-Of camphor
3301 2920	A	-Of citronella
3301 2930	A	-of aniseed

3301 2940	A	-of cassia
3301 2950	A	-of litsea cubeba
3301 2960	AB	-of eucalyptus
		-Other
3301 2991	A	-of geranium
3301 2999		-Other
3301 299910	23A	Oil of sassafras
3301 2999 91	AFE	Other endangered essential(other than citrus fruit) (including concretes and absolutes)
3301 2999 99	A	Other essential oils other than those of citrus fruit (including concretes and absolutes)
		-Resinoids
3301 3010		-Balsam of irises
3301 3090		-Other
3301 3090 10	FE	Other resinoids of endangered vegetable
3301 3090 90		Other resinoids
		-Other
3301 9010		-Extracted oleoresins
3301 9010 10	FE	Extracted oleoresins of endangered vegetable
3301 9010 90		Other extracted oleoresins
3301 9020		-Terpenic byproducts of the deterpenation of essential oils of citrus fruit
3301 9090		-Other
08 13		Fruit, dried, other than that of headings No. 08 01 to 08 06 mixtures of nuts or dried fruits of this Chapter
0813 1000	AB	-Apricots
0813 2000	AB	-Prunes
0813 3000	AB	-Apples
		-Other
0813 4010	AB	-Longans and Longan pulps
0813 4020	AB	-Persimmons
0813 4030	AB	-red jujubes
0813 4040	AB	-Preserved litchi
0813 4090		-Other
0813 4090 10	ABE	Fruit of wing fruit elaeagus (Elaeagus mollis Diels) dried
0813 4090 90	AB	Other fruit dried (other than that of headings No.08 01 to 08 06)
0813 5000	AB	-Mixtures of nuts or dried Fruits of this Chapter
21 01		Extracts, essences and concentrates, of coffee, tea or mate and preparations with a basis of these products or with a basis of coffee, tea or mate roasted chicory and other roasted coffee substitutes, and extracts, essences and concentrates thereof

		-Extracts, essences and concentrates of coffee, and preparations with a basis of these extracts, essences or concentrates or with a basis of coffee
2101 1100	AB	-Extracts, essences and concentrates
2101 1200	AB	-Preparations with a basis of extracts, essences or concentrates or with a basis of coffee
2101 2000	AB	-Extracts, essences and concentrates, of tea or mate, and preparations with a basis of these extracts, essences or concentrates or with a basis of tea or mate
2101 3000	AB	-Roasted Chicory and Other roasted Coffee substitutes, and extracts, essences and concentrates thereof
22 04		Wine of fresh grapes, including fortified wines grape must other than that of heading No.2009
2204 1000	AB	-Sparkling wine
		-Other wine grape must with fermentation prevented or arrested by the addition of alcohol
2204 2100	AB	In containers holding 2L or less
2204 2900	AB	-Other
2204 3000	AB	-Other Grape must
21 06		Food preparations not elsewhere specified or included
2106 1000	AB	-Protein concentrates and textured Protein substances
		-Other
2106 9010	AB	-Beverage bases
2106 9020	AB	---Compound alcoholic preparations of a kind used for the manufacture of beverages
2106 9030		-royal jelly, put up as tonic essences
2106 9030 10	ABFE	Royal jelly, put up as tonic essences containing composition of endangered plants
2106 9030 90	AB	Other royal jelly, put up as tonic essences
2106 9040	AB	---Coconut juice
2106 9050		-Seal oil capsules
2106 9050 10	ABEF	Endangered seal oil capsules
2106 9050 90	AB	Other seal oil capsules
2106 9090		-Other
2106 9090 暂 01	AB	Milk protein partial hydrolysate formula, milk protein hydrolysis amino acid formula special depth formula, infant milk powder
2106 9090 10	ABEF	Other food preparations containing composition of endangered plants, not elsewhere specified or included

2106 9090 90	AB	Other food preparations, not elsewhere specified or included
22 02		Waters, including mineral waters and aerated waters, containing added sugar or other sweetening matter or flavoured, and other No. nonalcoholic beverages, not including fruit or vegetable juices of heading No. 20 09
2202 1000		-waters, including Mineral waters and aerated waters, containing added sugar or other sweetening matter or flavoured
2202 1000 10	ABEF	Waters containing added sugar or other sweetening matter or flavoured of endangered animals and plant (including mineral waters and aerated water)
2202 1000 90	AB	Other waters , containing added sugar or other sweetening matter or flavoured (including mineral waters and aerated waters)
2202 9000		-Other
2202 9000 11	ABEF	Non-alcoholic beverages, in bulk, containing endangered animals and plants compositions (Other than fruit juices and vegetable juices of heading No. 2009)
2202 9000 19	AB	Other Non-alcoholic beverages, in bluk (Other than fruit juices and vegetable juices of heading No. 2009)
2202 9000 91	ABEF	Non-alcoholic beverages, with other packing containing compositions of endangered animals and plants (Other than fruit juices and vegetable juices of heading No. 2009)
2202 9000 99	AB	Non-alcoholic beverages, with other packing (other than fruit juices and vegetable juices of heading No. 2009)
22 06		Other fermented beverages (for example, cider, perry, mead) mixtures of fermented beverages and mixtures of fermented beverages and Non-alcoholic beverages, not elsewhere specified or included
2206 0010	AB	-Yellow Rice wine
2206 0090	AB	-Other
15 13		Coconut (copra) , palm kernel or babassu oil and fractions thereof, whether or not refined, but not chemically modified
		-Coconut (copra) oil and its fractions
1513 1100	AB	--Crude oil
1513 1900	AB	-Other
		-Palm kernel or babassu oil and fractions thereof-
1513 2100	AB	--Crude oil
1513 2900	AB	-Other
21 03		Sauces and preparations therefore mixed condiments and mixes seasonings mustard flour and meal and prepared mustard
2103 1000~	AB	-soya sauce
2103 2000	AB	-Tomato ketchup and Other Tomato sauces

2103 3000	AB	-Mustard flour and meal and Prepared Mustard
		-Other
2103 9010	AB	---Gourmet powder
2103 9020	AB	-Aromatic bitters, 44. 2% - 49. 2% of which is alcoholic strength by volume 1.5% -6% of which is spices and various ingredients by weight and 4% - 10% of which is sugar by weight
2103 9090	AB	-Other
01 06		Other live animals
		-Mammals
		primates
0106 1110	AFEB	-Pure-bred breeding
0106 1190	AFEB	-Other
		-Whales, dolphins and porpoises(mammals of the order Cetacea) manatees and dugongs (mammals of the order Sirenia) seal, sea lion and walrus (Pinnipedia mammal)
		-Whales, dolphins and porpoises (mammals of the order Cetacea) manatees and dugongs (mammals of the order Sirenia)
0106 1211	ABEF	-Pure-bred breeding
0106 1219	ABEF	-Other
		-Seal sea lion and walrus (mammals of the suborder Pinnipedia)
0106 1221	ABEF	-Pure-bred breeding
0106 1229	ABEF	-Other
		--Camel and Other camelids (camelidae)
0106 1310		-Pure-bred breeding
0106 1310 10	ABFE	Endangered camel and other endangered camel familia animals, pure-bred breeding (including domesticated and artificially bred)
0106 1310 90	AB	Other camel and other camel familia animals, pure-bred breeding
0106 1390		-Other
0106 1390 10	AFEB	Endangered camel and other endangered camel familia animals (including domesticated and artificially bred)
0106 1390 90	AB	Other camel and other camel familia animals
		-Rabbits and hares
0106 1410		-Pure-bred breeding
0106 1410 10	ABEF	Endangered hares, pure - bred breeding (including domesticated and artificially bred)
0106 1410 90	AB	Rabbits and Other hares, pure-bred breeding
0106 1490		-Other
0106 1490 10	ABEF	Other endangered hares (including domesticated and artificially bred)
0106 1490 90	AB	Other rabbits and hares
		-Other
0106 1910		-Pure-bred breeding
0106 1910 10	ABFE	other endangered mammals, pure-bred breeding(including

		domesticated and artificially bred)
0106 1910 90	AB	Other mammals, pure-bred breeding
0106 1990		-Other
0106 1990 10	AFEB	Other endangered mammals, including domesticated and artificially bred
0106 1990 90	AB	Other mammals
		-Reptiles(including snakes and turtles)
		-Pure-bred breeding
0106 2011	AFEB	----Crocodiles for cultivation
0106 2019	FEAB	-Other
0106 2020		-for human consumption
0106 2020 10	AFEB	Snakes for human consumption(including domesticated and artificially bred)
0106 2020 20	ABFE	Turtles, for human consumption (including domesticated and artificially bred)
0106 2020 90	FEAB	Other reptiles, for human consumption(including domesticated and artificially bred)
0106 2090	FEAB	-Other
		-Birds
		-Birds of prey
0106 3110	AFEB	-Pure-bred breeding
0106 3190	ABFE	-Other
		-Psittaciformes (including parrots, parakeets, macaws and cockatoos)
0106 3210		-Pure-bred breeding
0106 3210 10	AB	Budgerigar, pure-bred breeding
0106 3210 20	AB	Cockatiel (Nymphicus hollandicus),pure-bred breeding
0106 3210 90	ABFE	other birds of psittaciformes, pure-bred breeding (including domesticated and artificially bred)
0106 3290		-Other
0106 3290 10	AB	Budgerigar, other than pure-bred breeding
0106 3290 20	AB	Cockatiel (Nymphicus hollandicus), other than pure-bred breeding
0106 3290 90	ABFE	Other birds of psittaciformes (including domesticated and artificially bred) other than pure-bred breeding
		-Ostriches emus
0106 3310		-Pure-bred breeding
0106 3310 10	ABFE	Endangered ostriches, pure-bred breeding (including domesticated and artificially bred)
0106 3310 90	AB	Other ostriches and emus, pure-bred breeding
0106 3390		-Other
0106 3390 10	ABFE	Other endangered ostriches (including domesticated and artificially bred)
0106 3390 90	AB	Other ostriches and emus

		-Other
0106 3910		-Pure-bred breeding
0106 3910 10	ABFE	Other endangered birds, pure-bred breeding (including domesticated and artificially bred)
0106 3910 90	AB	Other birds, pure-bred breeding
		-for human consumption
0106 3921	AB	-Squabs
0106 3923	FEAB	-Teals
0106 3929		-Other
0106 3929 10	ABFE	Other endangered birds, for human consumption (including domesticated and artificially bred)
0106 3929 90	AB	Other birds for human consumption
0106 3990		-Other
0106 3990 10	ABFE	Other endangered bird, including domesticated and artificially bred
0106 3990 90	AB	other birds
		-Insects
		-Bees
0106 4110	AB	-Pure-bred breeding
0106 4190		-Other
0106 4190 01	ABS	Trichogramma
0106 4190 90	AB	Other bees
		-Other
0106 4910		-Pure-bred breeding
0106 4910 10	ABFE	Other endangered insects, pure - bred breeding (including domesticated and artificially bred)
0106 4910 90	AB	Other insects, pure -bred breeding
0106 4990		-Other
0106 499001	ABS	Predatory mites
0106 4990 10	ABFE	Other endangered insects(including domesticated and artificially bred)
0106 4990 90	AB	Other insects
		-Other
		-Pure-bred breeding
0106 9011		-Tadpole and young frogs
0106 9011 10	ABFE	Endangered tadpole and young frogs, pure-bred breeding
0106 9011 90	AB	Other tadpole and young frogs, pure-bred breeding
0106 9019		-Other
0106 9019 10	ABFE	Other endangered animals, pure-bred breeding (including domesticated and artificially bred)
0106 9019 90	AB	Other animals , pure-bred breeding
0106 9090		-Other
0106 9090 10	ABFE	Other endangered animals, purebred breeding (including domesticated and artificially bred)

0106 9090 90	AB	Other animals
03 07		Molluscs, whether in shell or not, live, fresh, chilled, frozen, dried, salted or in brine smoked molluscs, whether in shell or not, whether or not cooked before or during the smoking process flours, meals and pellets of mollusks, fit for human consumption
		-Oysters
		-Live fresh or chilled
0307 1110	AB	-for cultivation
0307 1190	AB	-Other
0307 1900	AB	-Other
		-Scallops, including queen scallops, of the genera Pecten Chlamys or Placopecten
		-Live, fresh or chilled
0307 2110		-for cultivation
0307 2110 10	ABE	Pearloyster (Pinctada maxima), for cultivation
0307 2110 90	AB	Other scallops(including queen scallops) for cultivation)
0307 2190		-Other
0307 2190 10	ABE	Other pearloyster (Pinctada maxima), live, fresh or chilled
0307 2190 90	AB	Other scallops (including queen scallops, excluding for cultivation) live, fresh or chilled
0307 2900		-Other
0307 2900 10	ABE	Other pearloyster (pinctada maxima), frozen, dried, salted or in brine (including smoked, in whether in shell or not whether or not cooked before or during the smoking process)
0307 2900 90	AB	Other scallops (including queen scallops), frozen, dried, salted or in brine (including smoked , in whether in shell or not whether or not cooked before or during the smoking process)
		Mussels (Mytilus spp., Perna spp.)
		-Live Fresh or chilled
0307 3110	AB	-for cultivation
0307 3190		-Other
0307 3190 01	AB	Mussels, fresh or chilled
0307 3190 90	AB	Other mussels live
0307 3900		-Other
0307 3900 01	AB	Mussels, frozen
0307 3900 90	AB	Other mussels, dried, salted or in brine (including smoked, in whether in shell or not whether or not cooked before or during the smoking process)
		-Cuttle fish (Sepia officinalis, Rossia macrosoma Sepiola spp.) and squid (Ommastrephes spp. , Loligo spp. , nototodarus spp. , Sepioteuthis spp.)
		-Live, fresh or chilled

0307 4110	AB	-for cultivation
0307 4190	AB	-Other
0307 4900	AB	-Other
		-Octopus (Octopus spp.)
0307 5100	AB	-Live, fresh or chilled
0307 5900	AB	-Other
		-Snails, Other than sea Snails
0307 6010		-for cultivation
0307 6010 10	ABFE	Endangered snails other than sea snails, for cultivation
0307 6010 90	AB	Other snails other than sea snails, for cultivation
0307 6090		-Other
0307 6090 10	ABFE	Other endangered snails, other than sea snails
0307 6090 90	AB	Other snails other than sea snails, live, fresh, chilled, frozen dried salted or in brine (including smoked, in whether in shell or not, whether or not cooked before or during the smoking process)
		-Clam cockle and ark shell (families arcidae arcticidae cardiidae donacidae hiatellidae mactridae mesoclesmaticlae myidae semelidae solecurtidae solenidae tridacnidae veneridae)
		-Live fresh or chilled
0307 7110		-for cultivation
0307 7110 10	ABEF	Tridacna stone, live fresh or chilled , for cultivation
0307 7110 90	AB	Clam,cockle and ark shell (arcidae arcticidae cardiidae donacidae hiatellidae mactridae mesodesmatidae myidae mesociesmatidae solecurtidae solenidae tridacnidae veneridae) live fresh or chilled , for cultivation
		-Other
0307 7191	AB	---Clam
0307 7199		-Other
0307 7199 10	ABEF	Tridacna stone, live fresh or chilled
0307 7199 90	AB	Clam cockle and ark shell (arcidae arcticidae cardiidae donacidae hiatellidae mactridae mesodesmatidae myidae mesodesmatidae solecurtidae solenidae tridacnidae veneridae) , live , fresh or chilled
		-Other
0307 7910	AB	---Cream
0307 7990	AB	-Other
0307 7990 10	ABEF	Tridacna stone , frozen, dried, salted (including smoked , in whether in shell or not whether or not cooked before or during the smoking process)

0307 7990 90	AB	Clam cockle and ark shell (arcidae arcticidae cardiidae donacidae hiatellidae mactridae mesoclesmaticlae myidae mesodesmatidae solecurtidae solenidae tridacnidae veneridae) , frozen dried salted (including smoked, in whether in shell or not, whether or not cooked before or during the smoking process)
		-Abalone (ormer)
		-Live fresh or chilled
0307 8110	AB	-for cultivation
0307 8190	AB	-Other
0307 8900	AB	-Other
		-other, including flours, meals and pellets, fit for human consumption
		-Live fresh or chilled
0307 9110		-for cultivation
0307 9110 10	AFEB	Endangered molluscs, live, fresh, chilled, for cultivation
0307 9110 90	AB	Other molluscs, live, fresh, chilled for cultivation
0307 9190		-Other
0307 9190 10	ABEF	Other endangered molluscs, live fresh chilled
0307 9190 90	AB	Other molluscs live, fresh, chilled
0307 9900		-Other
0307 9900 10	ABEF	Other endangered molluscs, frozen, dried, salted or in brine including flours, meals and pellets of mollusks, fit for human consumption, excluding crustaceans,(including smoked, whether in shell or not whether or not cooked ehfore or during the smoking process)
0307 9900 90	AB	Other molluscs, frozen, dried, salted or in brine, including flours, meals and pellets of mollusks, fit for human consumption, excluding crustaceans, (including smoked, whether in shell or not whether or not cooked before or during the smoking process)
15 12		Sunflower-seed, safflower or cotton-seed oil and fractions thereof, whether or not refined, but not chemically modified
		-Sunflower-Seed or sunflower oil and fractions thereof-
1512 1100	AB	--Crude oil
1512 1900	AB	-Other
		-Cotton-Seed oil and its fractions
1512 2100	AB	--Crude oil, whether or not gossypol has been removed
1512 2900	AB	-Other

Appendix III

Supervision Requirements of Customs of Main Non-agricultural Imports		
HS Code	Code	Article Description
44 03		Wood in the rough, whether or not stripped of bark or sapwood, or roughly squared
4403 1000		-Treated with paint, stains, Creosote or other Preservatives (treated with paint, stains, creosote or other preservatives)
4403 1000 10	8AF	Other taxaceae wood in the rough (treated with paint, stains, creosote or other preservatives)
4403 1000 20	8AF	Other endangered coniferous wood in the rough (treated with paint, stains, creosote or other preservatives)
4403 1000 90	8A	Other wood in the rough, treated with paint, stains, creosote or other preservatives
		-Other Coniferous
4403 2010		-Korean Pine and Mongolian scotch Pine
4403 2010 10	8AEF	Other korean pine wood in the rough(other than the wood treated with paint, stains, creosote or other preservatives)
4403 2010 90	8A	Other mongolian scotch pine in the rough(other than the wood treated with paint, stains, creosote or other preservatives)
4403 2020	8AF	-White Pine (spruce and fir)
4403 2020 10	8AF	Endangered white pine, spruce and fir wood in the rough
4403 2020 90	8A	Other white pine , spruce and fir, wood in the rough
4403 2030	8A	-Radiata Pine
4403 2040	8A	-Larch
4403 2050	8A	-Douglas fir
4403 2090		-Other
4403 2090 10	8AF	Other Endangered coniferous wood in the rough
4403 2090 20	8AF	Other endangered coniferous in the rough
4403 2090 90	8A	Other coniferous wood in the rough
		-Other of tropical wood specified in Subheading note 2 to this Chapter
4403 4100	8A	-Dark red Meranti, Light red Meranti and Meranti Bakau
		-Other(of tropical Non-contiferous wood specified in subheading note I to this chapter)
4403 4910	8A	-Teak
4403 4920	8A	-Okoume (Au koumed)
4403 4930	8A	-Dipterocarpus spp. Keruing
4403 4940	8A	-Kapur (Dryobalanops spp.)
4403 4950	8A	---Intsia spp. (Mengaris)

4403 4960	8A	-Koompassia spp. (Mengaris or Kempas)
4403 4970	8A	-Anisopter spp.
4403 4990		-Other
4403 4990 10	8AF	Endangered tropical wood in the rough, specified in Subheading note 2 to this Chapter(other than the wood treated with paint, stains, creosote or other preservatives)
4403 4990 90	8A	Tropical wood in the rough, specified in Subheading note 2 to this Chapter (other than the wood treated with paint , stains, creosote or other preservatives)
		-Other
4403 9100	8A	-of oak (Quercus spp.)
4403 9200	8A	-Of beech (Fagus spp.)
		-Other
4403 9910	8A	-of nan mu (Phoebe)
4403 9920	8A	-of Camphor wood
4403 9930	8AF	-Of rosewood
4403 9940	8A	-Of Kiri (Paulownia)
4403 9950	8A	-Ash
4403 9960	8A	-North American hard wood (including cherry, walnut and maple)
4403 9980		-Other, temperate Non-coniferous , not specified
4403 9980 10	8AF	Other temperate zone endangered Non-coniferous wood(other than the wood treated with paint, stains, creosote or other preservatives) not elsewhere specified or included
4403 9980 90	8A	Other temperate zone Non-coniferous wood (other than the wood treated with paint, stains, creosote or other preservatives) not elsewhere specified or included
4403 9990		-Other
4403 9990 11	8AEF	Puncture vine wood in the rough of South America (other than the wood treated with paint, stains, creosote or other preservatives)
4403 9990 12	8AEF	" Chinese eaglewood and similar chinese eaglewood (other than the wood treated with paint, stains, creosote or other preservatives) "
4403 9990 19	8AEF	Other endangered Non - coniferous wood in the rough (other than the wood treated with paint, stains, creosote or other preservatives)
4403 9990 90	8A	Other Non-coniferous wood in the rough (other than the wood treated with paint, stains, creosote or other preservatives) not elsewhere specified or included
44 07		Wood sawn or chipped lengthwise, sliced or peeled , whether or not planed, sanded or finger-jointed, of a thickness exceeding 6 mm

		-Coniferous
4407 4010		-Korean Pine and Mongolian scotch Pine
4407 4010 11	ABEF	Korean pine wood sawn or chipped lengthwise, sliced or peeled, end-jointed, thickness > 6mm
4407 4010 19	AB	Mongolian scotch pine wood sawn or chipped length-wise , sliced or peeled , end-jointed , thickness > 6mm
4407 4010 91	4ABEFxy	Wood sawn or chipped lengthwise, sliced or peeled, of Korean pine, Not end - jointed , thickness > 6mm
4407 4010 99	4ABxy	Wood sawn or chipped lengthwise , sliced or peeled, of Mongolian scotch pine, not end- jointed, thickness > 6mm
4407 1020		-White pine (spruce and fir)
4407 1020 11	ABEF	Wood sawn or chipped lengthwise, sliced or peeled, of endangered white pine (spruce and fir) , end - jointed , thickness > 6mm
4407 1020 19	AB	Wood sawn or chipped lengthwise, sliced or peeled, of other white pine (spruce and fir), end-jointed, thickness > 6mm
4407 1020 91	4ABEFxy	Wood sawn or chipped lengthwise, sliced or peeled, of endangered white pine (spruce and fir) not end -jointed , thickness > 6mm
4407 1020 99	4ABxy	Wood sawn or chipped lengthwise, sliced or peeled, of other white pine (spruce and fir), not end - jointed , thickness > 6mm
4407 1030		-Radiata Pine
4407 1030 10	AB	Wood sawn or chipped lengthwise, sliced or peeled, of radiata pine, end-jointed, thickness > 6mm
4407 1030 90	4ABxy	Wood sawn or chipped lengthwise, sliced or peeled, of radiata pine, not end-jointed, thickness > 6mm
4407 1040		-Douglas fir
4407 1040 10	AB	Wood sawn or chipped lengthwise, sliced or peeled, of douglas fir (Pseudotsuga menziesii), end-jointed, thickness > 6mm
4407 1040 90	4ABxy	Wood sawn or chipped lengthwise, sliced or peeled, of douglas fir (Pseudotsuga menziesii) not end-jointed, thickness > 6mm
4407 1090		-Other
4407 1090 11	FEAB	other endangered coniferous wood sawn or chipped lengthwise, sliced or peeled, end-jointed, thickness >6mm
4407 1090 19	AB	Other coniferous wood sawn or chipped lengthwise, sliced or peeled, end-jointed, thickness > 6mm
4407 1090 91	EAB40	Other endangered coniferous wood sawn or chipped lengthwise sliced or peeled, not end-jointed, thickness > 6mm
4407 1090 99	AB4xy	other coniferous wood sawn or chipped lengthwise, sliced or peeled not end-jointed, thickness > 6mm
		-Of tropical wood specified in Subheading note 2 to this chapter
4407 2100		-Mahogany (Swietenia spp.)

4407 2100 10	FEAB	Wood sawn or chipped lengthwise , sliced or peeled, of mashogany (swietenia spp.) , end-jointed, thickness >6mm
4407 2100 90	ABEFxy	Wood sawn or chipped lengthwise , sliced or peeled, of mashogany (swietenia spp.) , not - end-jointed, thickness> 6mm
4407 2200		--Virola, Imbuia and Balsa
4407 2200 10	AB	Wood sawn or chipped lengthwise sliced or peeled, of virola imbuia and balsa, end-jointed, thickness>6mm
4407 2200 90	4ABxy	Wood sawn or chipped lengthwise, sliced or peeled, of virola imbuia and balsa not end-jointed , thickness>6mm
4407 2500		-Dark red Meranti, Light red Meranti and Merand Bakau
4407 2500 10	AB	Wood sawn or chipped lengthwise , sliced or peeled , of Dark Red Meranti, Light Red Meranti and Meranti Bakau end-jointed, thickness > 6mm
4407 2500 90	4xAB	Wood sawn or chipped lengthwise, sliced or peeled, of Dark Red Meranti, Light Red Meranti and Meranti Bakau not end-jointed , thickness > 6mm
4407 2600		-White Lauan White Meranti, White Seraya, Yellow Meranti and Alan
4407 2600 10	AB	Wood sawn or chipped lengthwise, sliced or peeled, of White Lauan White Meranti, White Seraya, Yellow Meranti and Alan, end-jointed, thickness >6mm
4407 2600 90	y4xAB	Wood sawn or chipped lengthwise, sliced or peeled, of White Lauan White Meranti, White Seraya, Yellow Meranti and Alan, not end-jointed, thickness > 6mm
4407 2700		-Sapelli
4407 2700 10	AB	Wood sawn or chipped lengthwise, sliced or peeled, of sapelli, end-jointed, thickness> 6mm
4407 2700 90	4ABxy	Wood sawn or chipped lengthwise, sliced or peeled, of sapelli , not end-jointed thickness > 6mm
4407 2800		---Iroko
4407 2800 10	AB	Wood sawn or chipped lengthwise, sliced or peeled, of Iroko end - jointed , thickness > 6mm
4407 2800 90	4ABxy	Wood sawn or chipped lengthwise, sliced or peeled, of Iroko not end - jointed , thickness > 6mm
		-Other
4407 2910		-Teak
4407 2910 10	AB	Wood sawn or chipped lengthwise, sliced or peeled , of teak, end-jointed, thickness > 6mm
4407 2910 90	4xAB	Wood sawn or chipped lengthwise, sliced or peeled, of teak , not end-jointed , thickness > 6mm
4407 2920		-Acajou
4407 2920 10	AB	Wood sawn or chipped lengthwise, sliced or peeled , of acajou , end-jointed , thickness > 6mm

4407 2920 90	AB	Wood sawn or chipped lengthwise, sliced or peeled, of acajou , not end-jointed , thickness > 6mm
4407 2930		-Merban
4407 2930 10	AB	Wood sawn or chipped lengthwise, sliced or peeled, of merban, end-jointed, thickness > 6mm
4407 2930 90	AB	Wood sawn or chipped lengthwise, sliced or peeled, of merban , not end-jointed thickness > 6mm
4407 2990		-Other
4407 2990 11	FEAB	Wood sawn or chipped lengthwise, sliced or peeled, of Ramin wood, end-jointed, thickness> 6mm
4407 2990 12	FEAB	Other endangered tropical wood, not elsewhere specified or included in subheading note 2 to this Chapter, sawn or chipped lengthwise, sliced or peeled, end-jointed, thickness > 6mm
4407 2990 19	AB	Wood sawn or chipped lengthwise, sliced or peeled, of other tropical wood not elsewhere specified or included in subheading note 2 to this Chapter, end-jointed, thickness > 6mm
4407 2990 91	4xAFEB	Other tropical endangered wood, not elsewhere specified or included in subheading note 2 to this Chapter, sawn or chipped lengthwise, sliced or peeled, not end-jointed, thickness > 6mm
4407 2990 99	4xAB	Other tropical wood not elsewhere specified or included in subheading note 2 to this Chapter, sawn or chipped lengthwise, sliced or peeled, not end-jointed, thickness >6mm
		-Other
4407 9100		-of oak (Quercus spp.)
4407 9100 10	AB	Wood sawn or chipped lengthwise , sliced or peeled , of oak (Quercus spp.) , end-jointed, thickness >6mm
4407 9100 90	4xAB	Wood sawn or chipped lengthwise , sliced or peeled, of oak (Quercus spp.) , not end-jointed, thickness >6mm
4407 9200		-Of beech (Fagus spp.)
4407 9200 10	ABE	Wood sawn or chipped lengthwise , sliced or peeled , of beech (Fagus spp.) , end-jointed, thickness > 6mm
4407 9200 90	4ABExy	Wood sawn or chipped lengthwise, sliced or peeled, of beech (Fagus spp.), not end-jointed, thickness >6mm
4407 9300		-of maple (Acer spp.)
4407 9300 10	AB	Wood sawn or chipped lengthwise , sliced or peeled, of maple , end-jointed, thickness > 6mm
4407 9300 90	4ABxy	Wood sawn or chipped lengthwise, sliced or peeled, of maple , not end - jointed, thickness > 6mm
4407 9400		-of cherry (Prunus spp.)
4407 9400 10	AB	Wood sawn or chipped lengthwise, sliced or peeled, of cherry , end-jointed, thickness > 6mm
4407 9400 90	4ABxy	Wood sawn or chipped lengthwise, sliced or peeled, of cherry , not end - jointed , thickness > 6mm

4407 9500		-of Ash(Fraxinus, spp.)
4407 9500 10	AB	Wood sawn or chipped lengthwise, sliced or peeled, of ash , end-jointed , thickness > 6mm
4407 9500 90	4ABxy	Wood sawn or chipped lengthwise, sliced or peeled, of ash, not end – jointed, thickness > 6mm
		-Other
4407 9910		-of Camphor-wood, nanmu or rosewood
4407 9910 10	AFEB	Wood sawn or chipped lengthwise, sliced or peeled, of camphor-wood, nanmu or rosewood, end-jointed, thickness > 6mm
4407 9910 90	4xAFEB	Wood sawn or chipped lengthwise, sliced or peeled, of camphor-wood, nanmu or rosewood not end-jointed, thickness > 6mm
4407 9920		-Of paulownia
4407 9920 10	AB	Wood sawn or chipped lengthwise, sliced or peeled, of paulownia , end-jointed , thickness > 6mm
4407 9920 90	AB	Wood sawn or chipped lengthwise, sliced or peeled, of paulownia, not end-jointed, thickness > 6mm
4407 9930		-North American hardwood (including Walnut)
4407 9930 10	AB	Wood sawn or chipped lengthwise, sliced or peeled, of North American broadleaf hardwood (including walnut) end-jointed, thickness > 6mm
4407 9930 90	AB	Wood sawn or chipped lengthwise, sliced or peeled, of North American broadleaf hardwood (including walnut) not end-jointed, thickness > 6mm
4407 9980		-Other temperate, Non-Coniferous wood
4407 9980 11	FEAB	Wood sawn or chipped lengthwise, sliced or peeled, endangered Non-coniferous wood , of temperate, end-jointed , thickness > 6mm
4407 9980 19	AB	Wood sawn or chipped lengthwise, sliced or peeled, of temperate zone , Non-coniferous wood, end-jointed , thickness > 6mm
4407 9980 91	4ABEFxy	Wood sawn or chipped lengthwise, sliced or peeled, endangered Non-coniferous wood of temperate, not end-jointed, thickness > 6mm
4407 9980 99	4ABxy	Wood sawn or chipped lengthwise, sliced or peeled, of temperate zone Non-coniferous wood not end-jointed, thickness > 6mm
4407 9990		-Other
4407 9990 11	AFEB	Wood sawn or chipped lengthwise, sliced or peeled, of Puncture vine wood of South America, end -jointed , thickness > 6mm
4407 9990 12	AFEB	Wood sawn or chipped lengthwise, sliced or peeled, of Chinese eaglewood and similar Chinese eagle-wood, end-jointed, thickness > 6mm
4407 9990 15	AFEB	Wood sawn or chipped lengthwise, sliced or peeled, of other endangered wood, end - jointed, thickness > 6mm

4407 9990 19	AB	other wood sawn or chipped lengthwise, sliced or peeled, end-jointed, thickness > 6mm
4407 9990 91	4xAFEB	Wood sawn or chipped lengthwise, sliced or peeled, of Puncture vine wood of South America not end-jointed, thickness > 6mm
4407 9990 92	4xAFEB	Wood sawn or chipped lengthwise, sliced or peeled, of Chinese eaglewood and similar chinese eaglewood, not end - jointed, thickness > 6mm
4407 9990 95	4xAFEB	Wood sawn or chipped lengthwise, sliced or peeled, of other endangered wood, not end - jointed, thickness > 6mm
4407 9990 99	y4xAB	Other wood sawn or chipped lengthwise, sliced or peeled, not end-jointed, thickness > 6mm
44 12		Plywood, veneered panels and similar laminated wood
		-of bamboo
		-Plywood consisting solely of sheets of wood each ply not exceeding 6 mm thickness
4412 1011		-with at least one outer ply of tropical wood specified in Subheading note 2 to this Chapter
4412 1011 11	ABFE	Plywood consisting solely of sheets of endangered Bamboo with at least one outer ply of endangered tropical wood , each ply thickness $\leq 6\text{mm}$
4412 1011 19	ABFE	Plywood consisting solely of sheets of bamboo with at least one outer ply of endangered tropical wood specified in Subheading note 2 to this Chapter, each ply thickness $\leq 6\text{mm}$
4412 1011 91	ABEF	Plywood consisting solely of sheets of endangered Bamboo with at least one outer ply of other tropical wood specified in Subheading note 2 to this Chapter, each ply thickness $\leq 6\text{mm}$
4412 1011 99	AB	Plywood consisting solely of sheets of bamboo with at least one outer ply of Non - coniferous other tropical wood specified in Subheading note 2 to this Chapter, each ply thickness $\leq 6\text{mm}$
4412 1019		-Other
4412 1019 11	ABFE	Plywood consisting solely of sheets of wood with at least one outer ply of endangered Non - coniferous wood, each ply thickness $\leq 6\text{mm}$
4412 1019 19	AB	Plywood consisting solely of sheets of wood with at least one outer ply of Non - coniferous wood each ply thickness $\leq 6\text{mm}$
4412 1019 21	ABE	Plywood with two or more plies of endangered bamboo, each ply thickness $\leq 6\text{mm}$
4412 1019 29	AB	Plywood with two or more plies of bamboo, each ply thickness $\leq 6\text{mm}$
4412 1019 91	ABE	Plywood consisting solely of sheets of endangered bamboo each ply thickness $\leq 6\text{mm}$
4412 1019 99	AB	Other plywood consisting solely of sheets of other bamboo each ply thickness $\leq 6\text{mm}$

4412 1020		-Other, with at least one outer ply of Non-coniferous wood
4412 1020 11	ABFE	Laminated wood of endangered bamboo , with at least one outer ply of endangered Non - coniferous wood, each ply thickness≤ 6mm
4412 1020 19	ABEF	Laminated wood of endangered bamboo , with at least one outer ply of Non - coniferous wood, each ply thickness≤ 6mm
4412 1020 91	ABEF	Laminated wood of bamboo, with at least one outer ply of endangered Non - coniferous wood in imminent dangers, each ply thickness≤ 6mm
4412 1020 99	AB	Laminated wood of bamboo, with at least one outer ply of Non - coniferous wood, each ply thickness≤ 6mm
		-Other
4412 1091		-With at least one ply of tropical wood specified in Subheading note 2 10 this Chapter
4412 1091 10	ABEF	Laminated wood of endangered bamboo, with at least one outer ply of tropical wood each ply thickness≤6mm
4412 1091 90	AB	Laminated wood of bamboo, with at least one outer ply of tropical wood , each ply thickness≤ 6mm
4412 1092		---containing at least one layer of Particle board
4412 1092 10	ABEF	Laminated wood at least one outer ply of endangered bamboo containing at least one layer of particle board
4412 1092 90	AB	Laminated wood , at least one outer ply of other bamboo, containing at least one layer of particle board
4412 1099		-Other
4412 1099 10	ABE	Other laminated wood of endangered bamboo
4412 1099 90	AB	Other laminated of bamboo
		-Other plywood consisting solely of sheets of wood (other than bamboo) , each ply exceeding 6mm thickness
4412 3100		-With at least one outer ply of tropical wood specified in Subheading note 2 to this Chapter
4412 3100 10	ABFE	Plywood, with at least one outer ply of Acajou d' afrique, each ply thickness≤6mm
4412 3100 20	ABFE	Plywood, with at least one outer ply of Ramin wood, each ply thickness≤ 6mm
4412 3100 30	ABFE	Plywood, with at least one outer ply of endangered tropical wood specified in Subheading note 2 to this chapter, each ply thickness≤6mm
4412 3100 90	AB	Plywood , with at least one outer ply of tropical wood, specified in subheading note 2 to this Chapter, each ply thickness≤6mm
		-Other, with at least one outer ply of Non-coniferous wood
4412 3210		-with at least one outer ply of temperate Non-coniferous wood

4412 3210 10	ABFE	Plywood, with at least one outer ply of temperate zone endangered Non-coniferous wood (other than bamboo each ply thickness≤6mm)
4412 3210 90	AB	Plywood, with at least one outer ply of other temperate Non-coniferous wood (other than bamboo , each ply thickness≤6mm)
4412 3290		-Other
4412 3290 10	ABEF	Plywood, with at least one outer ply of other endangered Non-coniferous wood (other than bamboo each ply thickness≤6mm)
4412 3290 90	AB	Plywood, with one outer ply of other Non-coniferous wood other than bamboo (other than bamboo, each ply thickness≤6mm)
4412 3900		-Other
4412 3900 10	ABFE	Plywood, consisting solely of sheets of endangered wood (other than bamboo, each ply thickness ≤6mm)
4412 3900 90	AB	Plywood, consisting solely of sheets of wood (other than bamboo, each ply thickness≤ 6mm)
		-Other
		-Blockboard, laminboard and batten board
4412 9410		-With at least one outer ply of Non - coniferous wood
4412 9410 10	ABFE	Blockboard (including laminboard and battenboard) with at least one outer ply of acajou board
4412 9410 20	ABFE	Blockboard (including laminboard and battenboard) with at least one outer ply of Ramin board
4412 9410 30	ABFE	Blockboard (including laminboard and battenboard) with at least one outer ply of endangered tropical wood
4412 9410 40	ABFE	Blockboard (including laminboard and battenboard) with at least one outer ply of endangered Non - coniferous wood
4412 9410 90	AB	Blockboard (including laminboard and battenboard) with at least one outer ply of Non - coniferous wood
		-Other
4412 9491		-With at least one ply of tropical wood specified in Subheading note 2 co this Chapter
4412 9491 10	ABFE	Blockboard (including laminboard and battenboard) with at least one surface layer of endangered tropical coniferous wood specified in Subheading note 2 to this Chapter
4412 9491 90	AB	Blockboard (including laminboard and battenboard) with at least one surface layer of tropical coniferous wood specified in Subheading note 2 to this Chapter
4412 9492		-Other containing at least one layer of Particle board

4412 9492 10	ABFE	Blockboard (including laminboard and battenboard), with at least one layer of particle board , surface layer of endangered coniferous wood
4412 9492 90	AB	Blockboard (including laminboard and battenboard), with at least one layer of particle board, surface layer of coniferous wood
4412 9499		-Other
4412 9499 10	ABEF	Other laminated wood, containing an least one layer of particle board surface layer of endangered coniferous wood
4412 9499 90	AB	Other laminated wood, containing an least one layer of particle board , surface layer of coniferous wood
		-Other
4412 9910		-With at least one outer ply of Non-coniferous wood
4412 9910 10	ABFE	Laminated wood with at least one outer ply of Acajou d' Afrique
4412 9910 20	ABFE	Laminated wood with a least one outer ply of Ramin wood
4412 9910 30	ABFE	Laminated wood with at least one outer ply of endangered tropical wood
4412 9910 40	ABFE	Laminated wood with at least one outer ply of endangered Non - coniferous wood
4412 9910 90	AB	Laminated wood with at least one outer ply of Non -coniferous wood
		-Other
4412 9991		-With at least one ply of tropical wood specified in Subheading note 2 to this chapter
4412 9991 10	ABFE	Laminated wood with at least one surface layer of tropical endangered coniferous board specified in Subheading note 2 to this Chapter
4412 9991 90	AB	Laminated wood, with at least one surface layer of tropical coniferous board specified in Subheading note I to this Chapter
4412 9992		-Other containing at least one layer of particle board
4412 9992 10	ABFE	Other laminated wood, containing at least one layer of particle board , surface layer of endangered coniferous wood
4412 9992 90	AB	other laminated wood, containing at least one layer of particle board , surface layer of coniferous wood
4412 9999		-Other
4412 9999 10	ABFE	The endangered coniferous board veneer particle board
4412 9999 90	AB	The coniferous board veneer particle board
61 10		Jerseys, pullovers, cardigans, waistcoats and similar articles , knitted or crocheted
		-Of wool or fine animal hair
6110 1100		-of wool
6110 1100 11		Waistcoats, piled, hand-worked knitted or crocheted, of wool

6110 1100 19		Waistcoats, piled , knitted or crocheted, of wool
6110 1100 21		Men's or boys' sweater, piled, hand-worked, knitted or crocheted , of wool
6110 1100 29		Men's or boys' sweater, piled, knitted or crocheted of wool
6110 1100 31		Women's or girls' sweater, hand-worked, piled , knitted or crocheted of wool
6110 1100 39		Women's or girls' sweater, piled, knitted or crocheted , of wool
6110 1100 41		Pullovers cardigans, waistcoats and similar articles, knitted or crocheted of wool, hand-worked, piled
6110 1100 49		Pullovers cardigans, waistcoats and similar articles, knitted or crocheted of wool, piled
6110 1100 61		Waistcoats, hand-worked, not piled knitted or crocheted, of wool
6110 1100 59		Waistcoats , not piled , knitted or crocheted of wool
6110 1100 61		other men's or boys' sweater, hand-worked not piled , knitted or crocheted of wool
6110 1100 69		Other men's or boys' sweater, not piled, knitted or crocheted of wool
6110 1100 71		Other women's or girls' sweater hand-worked not piled , knitted or crocheted , of wool
6110 1100 79		Other women's or girls' sweater not piled, knitted or crocheted of wool
6110 1100 91		Pullovers cardigans, waistcoats and similar articles , knitted or crocheted of wool other hand-worked not piled
6110 1100 99		Pullovers cardigans, waistcoats and similar articles, knitted or crocheted of wool other, not piled
6110 1200		-of Kashmir (cashmere) Goats
6110 1200 11		Men's or boys' pullovers, cardigans, waistcoats and similar articles, of fine hair of Kashmir (cashmere) goats, knitted or crocheted, piled, hand-worked
6110 1200 19		Men's or boys' pullovers, cardigans, waistcoats and similar articles of fine hair of Kashmir (cashmere) goats, knitted or crocheted, piled
6110 1200 21		Women's or girls' pullovers, cardigans, waistcoats and similar articles, of fine hair of Kashmir (cashmere) goats, knitted or crocheted, piled, hand-worked
6110 1200 29		Women's or girls' pullovers, cardigans, waistcoats and similar articles, of fine hair of Kashmir (cashmere) goats , knitted or crocheted, piled
6110 1200 31		Men's or boys' pullovers, cardigans, waistcoats and similar articles, of fine hair of Kashmir (cashmere) goats , knitted or crocheted, not piled, hand-worked

6110 1200 39		Men's or boys' pullovers, cardigans, waistcoats and similar articles, of fine hair of Kashmir (cashmere) goats, knitted or crocheted , not piled
6110 1200 41		Women's or girls' pullovers, cardigans, waistcoats and similar articles, of fine hair of Kashmir (cashmere) goats, knitted or crocheted, not piled, hand-worked
6110 1200 49		Women's or girls' pullovers, cardigans, waistcoats and similar articles, of fine hair of Kashmir (cashmere) goats, knitted or crocheted , not piled
		-Other
6110 1910		-of other Goats
6110 1910 11		Other men's or boys' pullovers , cardigans , waistcoats and similar articles, of fine hair or wool of other goats, knitted or crocheted, piled, hand-worked
6110 1910 19		Other men's or boys' pullovers , cardigans , waistcoats and similar articles, of fine hair or wool of other goats, knitted or crocheted , piled
6110 1910 21		Other women's or girls' pullovers, cardigans, waistcoats and similar articles of fine hair or wool of other goats , knitted or crocheted , piled, hand-worked
6110 1910 29		Other women's or girls' pullovers, cardigans, waistcoats and similar articles of fine hair or wool of other goats , knitted or crocheted , piled
6110 1910 31		Other men's or boys' pullovers, cardigans, waistcoats and similar articles, of fine hair or wool of other goats, knitted or crocheted, not piled hand-worked
6110 1910 39		Other men's or boys' pullovers, cardigans, waistcoats and similar articles, of fine hair or wool of other goats, knitted or crocheted, not piled
6110 1910 41		Other women's or girls' pullovers, cardigans, waistcoats and similar articles of fine hair or wool of other goats , knitted or crocheted , not piled , hand-worked
6110 1910 49		Other women's or girls' pullovers, cardigans, waistcoats and similar articles of fine hair or wool of other goats , knitted or crocheted , not piled
6110 1920		-of rabbit and hare
6110 1920 11		Waistcoats, piled, hand-worked knitted or crocheted, of rabbit' or hare' fine hair
6110 1920 19		Waistcoats , piled , knitted or crocheted , of rabbit' or hare' fine hair

6110 1920 21		Men's or boys' sweater, piled, hand-worked, knitted or crocheted of rabbit' or hare' fine hair
6110 1920 29		Men's or boys' sweater, piled, knitted or crocheted of rabbit' or hare' fine hair
6110 1920 31		Women's or girls' sweater , piled , hand-worked , knitted or crocheted of rabbit' or hare' fine hair
6110 1920 39		Women's or girls' sweater, piled, knitted or crocheted, of rabbit' or hare' fine hair
6110 1920 41		Pullovers cardigans , waistcoats and similar articles , knitted or crocheted, piled, of rabbit' or hare' fine hair , hand-worked
6110 1920 49		Pullovers, cardigans, waistcoats and similar articles, knitted or crocheted , piled , of rabbit' or hare' fine hair
6110 1920 61		Waistcoats, hand-worked, not piled knitted or crocheted, of rabbit' or hare' fine hair
6110 1920 59		Waistcoats , not piled , knitted or crocheted , of rabbit' or hare' fine hair
6110 1920 61		Men's or boys' sweater, hand-worked , not piled , knitted or crocheted of rabbit' or hare' fine hair
6110 1920 69		Men's or boys' sweater, not piled, knitted or crocheted ,of rabbit' or hare' fine hair
6110 1920 71		Women's or girls' sweater hand-worked, not piled, knitted or crocheted of rabbit' or hare' fine hair
6110 1920 79		Women's or girls' sweater, not piled, knitted or crocheted, of rabbit' or hare' fine hair
6110 1920 91		Other pullovers , cardigans , waistcoats and similar articles, knitted or crocheted, not piled, of rabbit' or hare' fine hair hand-worked
6110 1920 99		Other pullovers , cardigans , waistcoats and similar articles, knitted or crocheted, not piled, of rabbit' or hare' fine hair
6110 1990		-Other
6110 1990 11		Waistcoats , piled , hand-worked , of other fine animal hair, knitted or crocheted
6110 1990 19		Waistcoats , piled , of other fine animal hair knitted or crocheted
6110 1990 21		Men's or boys' sweater, piled , hand-worked of other fine animal hair, knitted or crocheted
6110 1990 29		Men's or boys' sweater, piled, of other fine animal hair , knitted or crocheted
6110 1990 31		Women's or girls' sweater, piled, hand-worked of other fine animal hair, knitted or crocheted

6110 1990 39		Women's or girls' sweater, piled, of other fine animal hair, knitted or crocheted
6110 1990 41		Pullovers cardigans , waistcoats and similar articles , knitted or crocheted , piled of other fine animal hair, hand-worked
6110 1990 49		Pullovers cardigans , waistcoats and similar articles, knitted or crocheted , piled, of other fine animal hair
6110 1990 61		Waistcoats, hand-worked, not piled knitted or crocheted, of other fine animal hair
6110 1990 59		Waistcoats, hand-worked, knitted or crocheted, not piled , of other fine animal hair
6110 1990 61		Men's or boys' sweater, hand-worked, not piled, knitted or crocheted of other fine animal hair
6110 1990 69		Men's or boys' sweater, knitted or crocheted not piled , of other fine animal hair
6110 1990 71		Women's or girls' sweater, not piled, hand-worked, knitted or crocheted of other fine animal hair
6110 1990 79		Women's or girls' sweater, not piled, knitted or crocheted , of other fine animal hair
6110 1990 91		Pullovers cardigans, waistcoats and similar articles, knitted or crocheted, not piled, of other fine animal hair hand-worked
6110 1990 99		Pullovers, cardigans, waistcoats and similar articles, knitted or crocheted , not piled, of other fine animal hair
6110 2000		-of Cotton
6110 2000 11	A	Boys' or girls' playsuit, jerseys, pullovers , tricolette turn-down collar, open-necked collar, high-necked collar , containing < 36% by weight of flax, of cotton knitted , piled
6110 2000 12	A	Other boys' or girls' playsuit, pullovers, cardigans, waistcoats and similar articles, containing < 36% by weight of flax , of cotton knitted or crocheted
6110 2000 20		Waistcoats, piled , other than sweater, of cotton , knitted or crocheted
6110 2000 31		Jerseys or pullovers , piled, tricolette turn-down collar, open-necked collar, high-necked collar, of cotton , knitted
6110 2000 32		Men's or boys' jerseys, pullovers, piled, tricolette turn-down collar, open-necked collar, high-necked collar , of cotton, knitted

6110 2000 33		Women's or girls' jerseys , pullovers, piled, tricolette turn-down collar, open-necked collar, high-necked collar , of cotton knitted
6110 2000 41		Other sweater, piled , of cotton , knitted or crocheted
6110 2000 42		Men's or boys' pullovers, cardigans, waistcoats and similar articles , piled , of cotton , knitted or crocheted
6110 2000 43		Women's or girls' pullovers, cardigans, waistcoats and similar articles, piled of cotton, knitted or crocheted
6110 2000 61	AB	Other boys' or girls' playsuit ,jerseys , pullovers , tricolette turn-down collar, open-necked collar, high-necked collar, not piled, of cotton, knitted
6110 2000 52	AB	Other boys' or girls' playsuit pullovers, cardigans, waistcoats and similar articles, of cotton knitted or crocheted not piled
6110 2000 60		Other waistcoats, other than sweater, not piled, of cotton knitted or crocheted
6110 2000 71		Men's or boys' jerseys, pullovers, tricolette turn-down collar, open-necked collar, high-necked collar, knitted , not piled , of cotton knitted
6110 2000 72		Men's or boys' jerseys , pullovers, tricolette turn-down collar, open-necked collar, high-necked collar not piled, of cotton
6110 2000 73		Women's or girls' jerseys, pullovers, tricolette turn- down collar , open-necked collar , high-necked collar, knitted, not piled, of cotton knitted
6110 2000 91		Other sweater, not piled, of cotton, knitted or crocheted
6110 2000 92		Other men's or boys' pullovers , cardigans , waistcoats and similar articles, not piled, of cotton, knitted or crocheted
6110 2000 93		Women's or girls' pullovers, cardigans, waistcoats and similar articles, not piled, of cotton, knitted or crocheted
6110 2000 99		Other pullovers, cardigans, waistcoats and similar articles, not piled, of cotton knitted or crocheted
6110 3000		-Of man-made fibres
6110 3000 11	AB	Boys' or girls' playsuit, jerseys, pullovers , tricolette turn-clown collar, open-necked collar, high-necked collar, containing < 23% by weight of wool or fine animal hair, containing < 30% by weight of silk or silk waste , of man-made fibres, knitted , piled
6110 3000 12	AB	Boys' or girls' playsuit, jerseys, pullovers , tricolette turn-clown collar, open-necked collar, high-necked collar, containing < 23% by weight of wool or fine animal hair, containing < 30% by weight of silk or silk waste, of man-made fibres knitted , piled

6110 3000 21		Waistcoats, piled, containing 23% by weight of wool or fine animal hair , of man-made fibres, knitted or crocheted
6110 3000 22		Men's or boys' jerseys, pullovers, piled, knitted, containing \geq 23% by weight of wool or fine animal hair, tricolette turn-down collar, open-necked collar, high-necked collar of man-made fibres
6110 3000 23		Men's or boys' sweater, piled, containing \geq 23% by weight of wool or fine animal hair of man-made fibres, knitted or crocheted
6110 3000 24		Women's or girls' jerseys, pullovers, piled, knitted, of man-made fibres
6110 3000 25		Women's or girls' sweater, piled, containing 23% by weight of wool or fine animal hair, of man-made fibres , knitted or crocheted
6110 3000 26		Other pullovers , piled , knitted , containing \geq 23% by weight of wool or fine animal hair of man-made fibres, tricolette turn-down collar , open-necked collar, high-necked collar
6110 3000 29		Other cardigans, waistcoats and similar articles, piled, containing \geq 23% by weight of wool or fine animal hair , of man-made fibres, knitted or crocheted
6110 3000 31		other waistcoats , piled , of man-made fibres knitted or crocheted
6110 3000 32		Men's or boys' jerseys , pullovers , knitted or piled , tricolette turn-down collar, open-necked collar, high-necked collar of man-made fibres
6110 3000 33		other men's or boys' sweater, of man-made fibres, knitted or crocheted
6110 3000 34		Women's or girls' jerseys, pullovers, piled, knitted, tricolette turn-down collar, open-necked collar, high-necked collar of man-made fibres
6110 3000 35		other women's or girls' sweater, piled, of man-made fibres knitted or crocheted
6110 3000 36		Other men's or boys' pullovers, piled, tricolette turn- down collar, open-necked collar, high-necked collar, of man-made fibres, knitted or crocheted
6110 3000 37		other men's or boys' cardigans, piled, including waistcoats and similar articles, of man-made fibres, knitted or crocheted
6110 3000 38		Other women's or girls' pullovers, piled, tricolette turn-down collar, open-necked collar, high-necked collar , of man-made fibres, knitted
6110 3000 39		Other women's or girls' cardigans, including waistcoats and similar articles , piled , of man-made fibres, knitted or crocheted
6110 3000 41	A	Other boys' or girls' playsuit ,jerseys, pullovers, knitted, tricolette turn-down collar, open-necked collar, high-necked collar, not piled, of man-made fibres, knitted

6110 3000 42	A	Other boys' or girls' playsuit, including cardigans, waistcoats and similar articles, not piled, of man-made fibres , knitted or crocheted
6110 3000 61		Other waistcoats, containing 23% by weight of wool or fine animal hair, not piled, of man-made fibres, knitted or crocheted
6110 3000 52		Men's or boys' jerseys , pullovers , containing 23% by weight of wool or fine animal hair tricolette turndown collar, open-necked collar, high-necked collar, not piled, of man-made fibres, knitted
6110 3000 53		Men's or boys' sweater, containing \geq 23% by weight of wool or fine animal hair, not piled, of man-made fibres, knitted or crocheted
6110 3000 54		Women's or girls' jerseys, pullovers, containing \geq 23% by weight of wool or fine animal hair tricolette turn-down collar, open-necked collar, high-necked collar , not piled , of man-made fibres knitted
6110 3000 57		Women's or girls' sweater, containing 23% by weight of wool or fine animal hair, not piled, of man- made fibres, knitted or crocheted
6110 3000 58		Other pullovers , containing \geq 23 % by weight of wool or fine animal hair, tricolette turn-down collar, open-necked collar, high-necked collar, not piled, of man-made fibres , knitted
6110 3000 59		Other cardigans, including waistcoats and similar articles, containing \geq 23 % by weight of wool or fine animal hair , Not piled, of man-made fibres knitted or crocheted
6110 3000 91		Other men's or boys' jerseys, pullovers, tricolette turn-down collar, open-necked collar, high-necked collar , not piled , of man-made fibres knitted
6110 3000 92		Other men's or boys' sweater , not piled , of man-made fibres , knitted or crocheted
6110 3000 93		Other women's or girls' jerseys, pullovers, tricolette turn-down collar, open-necked collar, high-necked collar, not piled, of man-made fibres knitted
6110 3000 94		Other women's or girls' sweater, not piled, of man-made fibres , knitted or crocheted
6110 3000 95		Other men's or boys' pullovers, tricolette turn-down collar, open-necked collar, high-necked collar not piled , of man-made fibres , knitted
6110 3000 96		Other men's or boys' cardigans, waistcoats and similar articles , not piled, of man-made fibres knitted or crocheted
6110 3000 97		Other women's or girls' pullovers, tricolette turn-down collar, open-necked collar, high-necked collar, not piled of man-made fibres knitted

6110 3000 98		Other women's or girls' cardigans, waistcoats and similar articles of man-made fibres, knitted or crocheted
6110 3000 99		Other pullovers, of man-made fibres, knitted or crocheted, including cardigans, waistcoats and similar articles
		-of Other textile materials
6110 9010		-of silk or Spun silk
6110 9010 11		Sweater including cardigans, waistcoats, piled, containing 70% by weight of silk or silk waste, knitted or crocheted
6110 9010 19		Sweater including cardigans, waistcoats, piled, knitted or crocheted containing < 70% by weight of silk or spun silk
6110 9010 91		Other sweater, including cardigans, waistcoats, containing 70% by weight of silk or spun silk, not piled, knitted or crocheted
6110 9010 99		Other sweater, including cardigans, waistcoats, not piled, knitted or crocheted, containing < 70% by weight of silk or spun silk
6110 9090		-Other
6110 9090 11		Waistcoats, piled, other than sweater or sleeveless, knitted or crocheted of other textile materials cotton within limitations
6110 9090 12		Waistcoats, piled, other than sweater or sleeveless, knitted or crocheted, of other textile materials wool within limitations
6110 9090 13		Waistcoats, piled, other than sweater or sleeveless sweater knitted or crocheted, of other textile materials , man-made fibres within limitations
6110 9090 19		Waistcoats, piled, other than sweater or sleeveless sweater knitted or crocheted , of other textile materials
6110 9090 21		Waistcoats, not piled, other than sweater or sleeveless sweater, knitted or crocheted, of other textile materials, cotton within limitations
6110 9090 22		Waistcoats, not piled, other than sweater or sleeveless sweater, knitted or crocheted, of other textile materials, wool within limitations
6110 9090 23		Waistcoats, not piled, other than sweater or sleeveless sweater, knitted or crocheted, of other textile materials, man-made fibres within limitations
6110 9090 29		Waistcoats, not piled, other than sweater or sleeveless sweater, knitted or crocheted, of other textile materials
6110 9090 31		Sweater, piled knitted or crocheted of other textile materials , cotton within limitations
6110 9090 33		Men's or boys' sweater, piled , knitted or crocheted of other textile materials wool within limitations
6110 9090 34		Women's or girls' sweater, piled, knitted or crocheted, of other textile materials, wool within limitations

6110 9090 35		Men's or boys' sweater, knitted or crocheted of other textile materials man-made fibres within limitations
6110 9090 36		Women's or girls' sweater, piled, knitted or crocheted, of other textile materials, man-made fibres within limitations
6110 9090 39		Other sweater, piled, knitted or crocheted, of other textile materials
6110 9090 41		Men's or boys' pullovers, cardigans, waistcoats and similar article , piled , knitted or crocheted , of other textile materials cotton within limitations
6110 9090 42		Women's or girls' pullovers, cardigans, waistcoats and similar articles, piled, knitted or crocheted, of other textile materials cotton within limitations
6110 9090 43		Pullovers cardigans , waistcoats and similar articles, piled, knitted or crocheted of other textile materials, wool within limitations
6110 9090 45		Men's or boys' pullovers, cardigans, waistcoats and similar articles , piled , knitted or crocheted, of other textile materials , man-made fibres within limitations
6110 9090 46		Women's or girls' pullovers, cardigans, waistcoats and similar articles, piled, knitted or crocheted, of other textile materials, man-made fibres within limitations
6110 9090 49		Pullovers cardigans, waistcoats and similar articles, piled, knitted or crocheted of other textile materials
6110 9090 61		Sweater, not piled, knitted or crocheted of other textile materials cotton within limitations
6110 9090 53		Men's or boys' sweater, not piled, knitted or crocheted, of other textile materials, wool within limitations
6110 9090 54		Women's or girls' sweater, not piled, knitted or crocheted, of other textile materials wool within limitations
6110 9090 57		Men's or boys' sweater, not piled, knitted or crotheted , of other textile materials , man-made fibres within limitations
6110 9090 58		Women's or girls' sweater, not piled, knitted or crocheted, of other textile materials man-made fibres within limitations
6110 9090 59		Sweater, not piled , knitted or crocheted of other textile materials
6110 9090 61		Men's or boys' pullovers, cardigans, waistcoats and similar articles, not piled, knitted or crocheted of other textile materials cotton within limitations
6110 9090 62		Women's or girls' pullovers, cardigans, waistcoats and similar articles, not piled , knitted or crocheted, of other textile materials, cotton within limitations

6110 9090 63		Other pullovers, cardigans, waistcoats and similar articles, not piled , knitted or crocheted of other textile materials , wool within limitations
6110 9090 65		Men's or boys' pullovers, cardigans, waistcoats and similar articles, not piled knitted or crocheted of other textile materials, man-made fibres within limitations
6110 9090 66		Women's or girls' pullovers, cardigans, waistcoats and similar articles, not piled , knitted or crocheted, of other textile materials, man-made fibres within limitations
6110 9090 69		Other pullovers, cardigans, waistcoats and similar articles, not piled, knitted or crocheted, of other textile materials
6110 9090 90		Other pullovers, cardigans, waistcoats and similar articles, knitted or crocheted of other textile materials
61 09		T-shirts, singlets and other vests, knitted or crocheted
6109 1000		-of Cotton
6109 1000 10	A	T-shirts, singlets, underwear style, including other vests , of cotton , knitted or crocheted
6109 1000 21	A	Other men's or boys' T-shirts , other than underwear, of cotton , knitted or crocheted
6109 1000 22	A	Other women's or girls' T-shirts other than underwear of cotton knitted or crocheted
6109 1000 91	A	Other men's singlets and other vests, including boys' No. 8 - No. 18 other than underwear of cotton , knitted or crocheted
6109 1000 92	A	Other men's or boys' singlets and other vests, other than underwear, of cotton , knitted or crocheted
6109 1000 99	A	Other women's or girls' singlets and other vests other than underwear , of cotton , knitted or crocheted
		-of Other textile materials
6109 9010		-of silk or Spun silk
6109 9010 11	A	T-shirts , singlets and other vests, underwear , containing 70% by weight of silk or spun silk, knitted or crocheted
6109 9010 19	A	Other T-shirts, singlets and other vests, underwear, containing < 70% by weight of silk or spun silk, knitted or crocheted
6109 9010 21	A	Singlets, vests, including boys' No. 8 - No. 18, girls' No. 7 - No. 16 other than underwear, containing \geq 70% by weight of silk or spun silk knitted or crocheted
6109 9010 29	A	Other singlets, vests, including boys' No. 8 - No. 18, girls' No. 7 - No.16 other than underwear, containing < 70% by weight of silk or spun silk , knitted or crocheted
6109 9010 91	A	Other T-shirts, singlets and other vests, including other vests, containing 70% by weight of silk or spun silk , knitted or crocheted

6109 9010 99	A	Other of other textile materials, including other vests, containing < 70% by weight of silk or spun silk knitted or crocheted
6109 9090		-Other
6109 9090 11	A	T-shirts, singlets and other vests, underwear style, long sleeve, of wool or fine animal hair, knitted or crocheted
6109 9090 12	A	Men's or boys' T-shirts, singlets, underwear style, other than long sleeve, of wool or fine animal hair, knitted or crocheted
6109 9090 13	A	Women's or girls' T-shirts, singlets, underwear style, other than long sleeve, of wool or fine animal hair, knitted or crocheted
6109 9090 21	A	Men's or boys' T-shirts, other than underwear, of wool or fine animal hair, knitted or crocheted
6109 9090 22	A	Women's or girls' T-shirts, other than underwear of wool or fine animal hair, knitted or crocheted
6109 9090 31	A	Men's singlets vests and boys' No. 8 - No. 18, other than underwear, knitted or crocheted of wool or fine animal hair
6109 9090 32	A	Men's or boys' singlets, vests, other than underwear, of wool or fine animal hair, knitted or crocheted
6109 9090 33	A	Women's or girls' singlets vests other than underwear of wool or fine animal hair, knitted or crocheted
6109 9090 40	A	Underwear of man - made fibres, knitted or crocheted
6109 9090 50	A	T - shirts of man - made fibres , knitted or crocheted
6109 9090 60	A	Other singlets, vests of man - made fibres, knitted or crocheted
6109 9090 91	A	Other T-shirts, singlets and other vests underwear style, of other textile materials knitted or crocheted
6109 9090 92	A	Other singlets , and other vests other than underwear , of other textile materials, including boys' No. 8 - No. 18 or girls' No. 7 - No. 16, knitted or crocheted
6109 9090 93	A	Other T-shirts, singlets and other vests, other than underwear of other textile materials, knitted or crocheted
61 11		Babies' garments and clothing accessories, knitted or crocheted
6111 2000		-of Cotton
6111 2000 10	A	Babies' hosiery of cotton , knitted or crocheted
6111 2000 20	A	Babies' gloves mittens and mitts of cotton knitted or crocheted
6111 2000 40	A	Babies' coat , raincoat , ski suit including jacked and similar articles , of cotton , knitted or crocheted
6111 2000 50	A	Other babies' garments of cotton knitted or crocheted
6111 2000 90	A	Babies' clothing accessories of cotton , knitted or crocheted
6111 3000		-Of synthetic fibres
6111 3000 10	A	Babies' hosiery of synthetic fibres, knitted or crocheted
6111 3000 20	A	Babies' gloves, mittens and mitts of synthetic fibres, knitted or crocheted

6111 3000 40	A	Babies' coat, raincoat, ski suit, jacketed and similar articles, of synthetic fibres, knitted or crocheted
6111 3000 50	A	Other babies' garments of synthetic fibres, knitted or crocheted
6111 3000 90	A	Babies' clothing accessories of synthetic fibres, knitted or crocheted
		-of Other textile materials
6111 9010	A	-of wool or Fine Animal Hair
6111 9090		-Other
6111 9090 10	A	Babies' hosiery of artificial fibres, knitted or crocheted
6111 9090 90	A	Babies' garments and clothing accessories, of other textile materials knitted or crocheted
62 04		Women's or girls' suits, ensembles, jackets, blazers, dresses, skirts, divided skirts, trousers, bib and brace overalls, breeches and shorts (other than swimwear)
		-Suits
6204 1100		-Of wool or fine animal hair
6204 1200		-Of cotton
6204 1200 10		Women ' s or girls ' suits ,including trousers , of cotton
6204 1200 90		Women ' s or girls ' suits , not including trousers, of cotton
6204 1300		-of synthetic fibres
6204 1300 10		Women's or girls' suits, containing 36% by weight of wool or fine animal hair, of synthetic fibres
6204 1300 90		Other women's or girls' suits of synthetic fibres
		-of Other textile materials
6204 1910		-Of silk or spun silk
6204 1910 10		Women's or girls' suits of silk and silk waste , containing \geq 70% by weight of silk or spun silk
6204 1910 90		Women's or girls' suits of silk and spun silk waste containing <70% by weight of silk
6204 1990		-Other
6204 1990 11		Women's or girls' suits of artificial fibres, containing \geq 36% by weight of wool or fine animal hair
6204 1990 19		Other women's or girls' suits of artificial fibres
6204 1990 91		Women's or girls' suits of other textile materials cotton within limitations
6204 1990 92		Women's or girls' suits of other textile materials , wool within limitations
6204 1990 93		Women's or girls' suits of other textile materials, man-made fibres within limitations
6204 1990 99		Women's or girls' suits of other textile materials
		-Ensembles

6204 2100		-Of wool or fine animal hair
6204 2200		-Of cotton
6204 2200 11		Women's or girls' ensembles of cotton, including trousers industrial and career apparel
6204 2200 19		Women's or girls' ensembles of cotton, excluding trousers industrial and career apparel
6204 2200 91		Women's or girls' ensembles of cotton, including trousers Non - industrial or career apparel
6204 2200 99		Women ' s or girls ' ensembles of cotton, not including trousers , Non - industrial or career apparel
6204 2300		-of synthetic fibres
6204 2300 11		Women's or girls' ensembles of synthetic fibres, industrial and career apparel, containing 36% by weight of wool or fine animal hair
6204 2300 19		Women's or girls' ensembles of synthetic fibres, containing $\geq 36\%$ by weight of wool or fine animal hair
6204 2300 91		Women's or girls' ensembles of synthetic fibres, including trousers, industrial and career apparel
6204 2300 99		Women's or girls' ensembles of synthetic fibres
		-of Other textile materials
6204 2910		-of silk or Spun silk
6204 2910 10		Women's or girls' ensembles, containing 70% by weight of silk or spun silk
6204 2910 90		Women's or girls' ensembles, containing < 70% by weight of silk or spun silk
6204 2990		-Other
6204 2990 11		Women's or girls' ensembles of artificial fibres including trousers
6204 2990 19		Women's or girls' ensembles of artificial fibres, excluding trousers
6204 2990 21		Women's or girls' ensembles of other textile materials, including trousers, cotton within limitations
6204 2990 29		Women's or girls' ensembles of other textile materials , excluding trousers , cotton within limitations
6204 2990 30		Women's or girls' ensembles of other textile materials , wool within limitations
6204 2990 41		Women's or girls' ensembles of other textile materials ,including trousers, man-made fibres within limitations
6204 2990 49		Women ' s or girls ' ensembles , excluding trousers , of other textile material man - made fibres within limitations

6204 2990 91		Women's or girls' ensembles, including trousers, of other textile material
6204 2990 99		Women's and girls' ensembles of other textile materials, excluding trousers
		-Jackets and blazers
6204 3100		-Of wool or fine animal hair
6204 3200		-of Cotton
6204 3200 10		Women's or girls' jackets and blazers of cotton, industrial and career apparel
6204 3200 90		Women's or girls' jackets and blazers of cotton
6204 3300		-of synthetic fibres
6204 3300 10		Women's or girls' jackets and blazers of synthetic fibres containing 36% by weight of wool or fine animal hair industrial and career apparel
6204 3300 20		Women's or girls' jackets and blazers of synthetic fibres containing $\geq 360\%$ by weight of wool or fine animal hair
6204 3300 30		Women's or girls' jackets and blazers of synthetic fibres , industrial and career apparel
6204 3300 90		Other women's or girls' jackets and blazers of synthetic fibres
		-of Other textile materials
6204 3910		-of silk or Spun silk
6204 3910 10		Women's or girls' jackets and blazers of silk containing 70% by weight of silk or spun silk
6204 3910 90		Women's or girls' jackets and blazers of silk containing <70% by weight of silk or spun silk
6204 3990		-Other
6204 3990 11		Women's or girls' jackets and blazers of artificial fibres containing $\geq 36\%$ by weight of wool or fine animal hair, industrial and career apparel
6204 3990 12		Women's or girls' jackets and blazers of artificial fibres containing $\geq 36\%$ by weight of wool or fine animal hair
6204 3990 13		Women's or girls' jackets and blazers of artificial fibres , industrial and career apparel
6204 3990 19		Women's or girls' jackets and blazers of artificial fibres
6204 3990 91		Women's or girls' jackets and blazers of other textile materials , cotton within limitations
6204 3990 92		Women's or girls' jackets and blazers of other textile materials , wool within limitations
6204 3990 93		Women's or girls' jackets and blazers of other textile materials , man-made fibres within limitations

6204 3990 99		Women's or girls' jackets and blazers of other textile materials
		-Dresses
6204 4100		-Of wool or fine animal hair
6204 4200		-Of cotton
6204 4300		-of synthetic fibres
6204 4300 10		Women's or girls' dresses of synthetic fibres, containing 36% by weight of wool or fine animal hair
6204 4300 90		Other women's or girls' dresses of synthetic fibres
6204 4400		-Of artificial fibres
6204 4400 10		Women's or girls' dresses of artificial fibres, containing 36% by weight of wool or fine animal hair
6204 4400 90		other women's or girls' dresses of artificial fibres
		-of Other textile materials
6204 4910		-of silk or Spun silk
6204 4910 10		Women's or girls' dresses of silk, containing $\geq 70\%$ by weight of silk or spun silk
6204 4910 90		Other women's or girls' dresses of silk, containing $< 70\%$ by weight of silk or spun silk
6204 4990		-Other
6204 4990 91		Women's or girls' dresses of other textile materials, cotton within limitations
6204 4990 92		Women's or girls' dresses of other textile materials, wool within limitations
6204 4990 93		Women's or girls' dresses of other textile materials, man-made fibres within limitations
6204 4990 99		Women's or girls' dresses of other textile materials
		-Skirts and divided Skirts
6204 5100		-Of wool or fine animal hair
6204 6200		-of Cotton
6204 5300		-of synthetic fibres
6204 5300 10		Women's or girls' skirts and divided skirts, of synthetic fibres, containing 36% by weight of wool or fine animal hair
6204 5300 90		Women's or girls' skirts and divided skirts, of synthetic fibres
		-of Other textile materials
6204 5910		-Of silk or spun silk
6204 5910 10		Women's or girls' skirts and divided skirts, containing $\geq 70\%$ by weight of silk
6204 5910 90		Women's or girls' skirts and divided skirts, containing $< 70\%$ by weight of silk
6204 5990		-Other

6204 5990 11		Women's or girls' skirts and divided skirts , of artificial fibres, containing 36% by weight of wool or fine animal hair
6204 5990 19		Women's or girls' skirts and divided skirts , of artificial fibres
6204 5990 91		Women's or girls' skirts and divided skirts of other textile materials cotton within limitations
6204 5990 92		Women's or girls' skirts and divided skirts of other textile materials wool within limitations
6204 5990 93		Women's or girls' skirts and divided skirts of other textile materials , man-made fibres within limitations
6204 5990 99		Women's or girls' skirts and divided skirts of other textile materials
		-Trousers, bib and brace overalls, breeches and shorts
6204 6100		-Of wool or fine animal hair
6204 6100 10		Women's or girls' bib and brace overalls, with thermal lining, of wool or fine animal hair
6204 6100 90		Women's or girls' trousers , breeches, of wool or fine animal hair
6204 6200		-of Cotton
6204 6200 10		Women's or girls' bib and brace overalls of cotton
6204 6200 21		Women's or girls' trousers breeches of cotton , containing \geq 15% by weight of down or feathers and water fowl, down content rate \geq 35% or containing \geq 10% by weight of down or Feathers
6204 6200 22		Women's or girls' trousers breeches , of cotton (playsuit)
6204 6200 29		Other women's or girls' trousers , breeches of cotton
6204 6200 91		Women's or girls' shorts of cotton , containing 15 % by weight of down or feathers and water fowl, down content rate \geq 35% or containing \geq 10% by weight of down or feathers
6204 6200 92		Girls ' shorts of cotton(playsuit)
6204 6200 99		Other women's shorts of cotton
6204 6300		-of synthetic fibres
6204 6300 10		Women's or girls' bib and brace overalls of synthetic fibres
6204 6300 21		Women's or girls' trousers, breeches, containing \geq 15% by weight of down or feathers and water fowl, down content rate \geq 35% or containing \geq 10% by weight of down or feathers , of synthetic fibres
6204 6300 22		Women's or girls' trousers, breeches, containing \geq 36% by weight of wool or fine animal hair, of synthetic fibres
6204 6300 23		Women's or girl's trousers, breeches, of synthetic fibres (playsuit)
6204 6300 24		Women's or girl's trousers, breeches, of synthetic fibres (other than ski pants)
6204 6300 29		Other women's or girls' trousers , breeches , of synthetic fibres

6204 6300 91		Women's or girls' shorts , containing 15% by weight of down or feathers and water fowl , down content rate $\geq 35\%$ or containing $\geq 10\%$ by weight of down or feathers , of synthetic fibres
6204 6300 92		Other women ' s or girls' shorts of synthetic fibres (playsuit)
6204 6300 99		Other women's or girls' trousers short, of synthetic fibres
6204 6900		-of Other textile materials
6204 6900 11		Women's bib and brace overalls of artificial fibres
6204 6900 12		Women' s or girls' trousers breeches of artificial fibres (containing 36% by weight of wool or fine animal hair)
6204 6900 13		Women ' s or trousers shorts of artificial fibres (containing $\geq 36\%$ by weight of wool or fine animal hair)
6204 6900 14		Women's or girls' trousers breeches, shorts, of artificial fibres, playsuit
6204 6900 15		Women's trousers , shorts , of artificial fibres (playsuit)
6204 6900 16		Other women ' s trousers , breeches of artificial fibres
6204 6900 17		Women's or girls' other trousers, short, of artificial fibres
6204 6900 21		Women's or girls' bib and brace overalls of silk
6204 6900 25		Women's or girls' other trousers, breeches, shorts, of silk , containing 70% by weight of silk
6204 6900 26		Women' s or girls' trousers, breeches shorts, of silk, containing $\leq 70\%$ by weight of silk (playsuit)
6204 6900 29		Women's or girls' other trousers , breeches , shorts of silk , containing $< 70\%$ by weight of silk
6204 6900 91		Women's or girls' bib and brace overalls of other textile materials
6204 6900 92		Women's or girls' trousers, breeches, shorts, playsuit of other textile materials
6204 6900 93		Women's or girls' trousers, breeches, shorts, cotton within limitations of other textile materials
6204 6900 94		Women ' s or girls trousers breeches, shorts, of other textile materials, wool within limitations
6204 6900 95		Women' s or girls' trousers, breeches, shorts, of other textile materials, man-made fibres within limitations
6204 6900 99		Women's or girls' other trousers breeches shorts of other textile materials
62 03		Men's or boys' suits, ensembles, jackets, blazers, trousers, bib and brace overalls, breeches and shorts (other than swim wear)
		-Suits
6203 1100		-Of wool or fine animal hair
6203 1200		-of synthetic fibres

6203 1200 10		Men's or boys' suits, containing 36% by weight of wool or fine animal hair, of synthetic fibres
6203 1200 90		Other men's or boys' suits of synthetic fibres
		-of Other textile materials
6203 1910		-of silk or Spun silk
6203 1910 10		Men's or boys' suits, containing $\geq 70\%$ by weight of silk
6203 1910 90		Other men's or boys' suits, containing $< 70\%$ by weight of silk
6203 1990		-Other
6203 1990 10		Men's or boys' suits of cotton
6203 1990 21		Men's or boys' suits of artificial fibres, containing 36% by weight of wool or fine animal hair
6203 1990 29		Men's or boys' suits of other artificial fibres
6203 1990 91		Men's or boys' suits of other textile materials cotton within limitations
6203 1990 92		Men's or boys' suits of other textile materials, wool within limitations
6203 1990 93		Men's or boys' suits of other textile materials, man-made fibres within limitations
6203 1990 99		Men's or boys' suits of other textile materials
		-Ensembles
6203 2200		-Of cotton
6203 2200 10		Men's or boys' ensembles of cotton, industrial and career apparel
6203 2200 90		Other men's or boys' ensembles of cotton
6203 2300		-of synthetic fibres
6203 2300 11		Other men's or boys' ensembles, containing 36% by weight of wool or fine animal hair industrial and career apparel of synthetic fibres
6203 2300 19		Other men's or boys' ensembles, containing $\geq 36\%$ by weight of wool or fine animal hair, of synthetic fibres
6203 2300 91		Other men's or boys' ensembles, industrial and career apparel, of synthetic fibres
6203 2300 99		Other men's or boys' ensembles of synthetic fibres
		-of Other textile materials
6203 2910		-of silk or Spun silk
6203 2910 10		Men's or boys' ensembles, containing 70% by weight of silk
6203 2910 90		Other men's or boys' ensembles, containing $\sim 70\%$ by weight of silk
6203 2920		-of wool or Fine Animal Hair
6203 2990		-Other
6203 2990 11		Other men's or boys' ensembles of artificial fibres, industrial and career apparel
6203 2990 19		Other men's or boys' ensembles of artificial fibres

6203 2990 90		Other men's or boys' ensembles of other textile materials
		-Jackets and blazers
6203 3100		-Of wool or fine animal hair
6203 3100 10		Men's or boys' suit jackets and blazers, of wool or fine animal hair
6203 3100 90		Other men's or boys' jackets and blazers, of wool or fine animal hair
6203 3200		-of Cotton
6203 3200 10		Men's or boys' jackets and blazers of cotton industrial and career apparel
6203 3200 90		Men's or boys' jackets and blazers of cotton
6203 3300		-Of synthetic fibres
6203 3300 11		Men's or boys' suit jacket, containing 36% by weight of wool or fine animal hair industrial and career apparel , of synthetic fibres
6203 3300 19		Men's or boys' suit jacket, containing $\geq 36\%$ by weight of wool or fine animal hair, of synthetic fibres
6203 3300 21		Other men's or boys' jackets and blazers of synthetic fibres, containin $\sim 36\%$ by weight of wool or fine animal hair industrial and career apparel
6203 3300 29		Other men's or boys' jackets and blazers of synthetic fibres, containing 36% by weight of wool or fine animal hair
6203 3300 91		Other men's or boys' jackets and blazers of synthetic fibres , industrial and career apparel
6203 3300 99		Other men's or boys' jackets and blazers of synthetic fibres
		-of Other textile materials
6203 3910		-of silk or Spun silk
6203 3910 10		Men's or boys' jackets and blazers of silk, containing $\geq 70\%$ by weight of silk
6203 3910 90		Men's or boys' jackets and blazers of silk, containing $< 70\%$ by weight of silk
6203 3990		-Other
6203 3990 11		Men's or boys' suit-type jacket , of artificial fibres , industrial and career apparel, containing 36% by weight of wool or fine animal hair
6203 3990 19		Men's or boys' suit-type jacket, of artificial fibres, containing $\geq 36\%$ by weight of wool or fine animal hair
6203 3990 21	A	Other men's or boys' jackets and blazers of artificial fibres, containing $\geq 36\%$ by weight of wool or fine animal hair industrial and career apparel
6203 3990 29		other men's or boys' jackets and blazers of artificial fibres, containing $\geq 36\%$ by weight of wool or fine animal hair

6203 3990 31		Men's or boys' jackets and blazers of artificial fibres, industrial and career apparel
6203 3990 39		Men's or boys' jackets and blazers of artificial fibres
6203 3990 91		Other men's or boys' jackets and blazers of other textile materials cotton within limitations
6203 3990 92		Other men's or boys' jackets and blazers of other textile materials wool within limitations
6203 3990 93		other men's or boys' jackets and blazers of other textile materials man-made fibres within limitations
6203 3990 99		Other men's or boys' jackets and blazers of other textile materials
		-Trousers, bib and brace overalls, breeches and shorts
6203 4100		-Of wool or fine animal hair
6203 4100 11		Men's or boys' bib and brace overalls, with thermal lining , of wool or fine animal hair
6203 4100 19		Men's or boys' bib and brace overalls of wool or fine animal hair
6203 4100 21		Men's or boys' trousers, breeches, with thermal lining , of wool or fine animal hair
6203 4100 22		Men's trousers, breeches, including boys' No. 8 - No. 18 of wool or fine animal hair
6203 4100 29		Other boys' trousers , breeches , of wool or fine animal hair
6203 4100 90		Men's or boys' shorts , of wool or fine animal hair
		-of Cotton
6203 4210		-Arabian trousers
6203 4210 10		Men's or boys' Arabian trousers of cotton, containing 15% by weight of down or feathers and water fowl , down content rate \geq 35 % or containing \geq 10% by weight of down or feathers
6203 4210 90		Men's or boys' Arabian trousers of cotton
6203 4290		-Other
6203 4290 11		Men's or boys' bib and brace overalls, industrial and career apparel , containing 15% by weight of down or feathers and water fowl down content rate \geq 35% or containing \geq 10% by weight of down or Feathers , of cotton
6203 4290 12		Men's or boys' bib and brace overalls, containing \geq 15% by weight of down or feathers and water fowl, down content rate \geq 35% or containing \geq 10% by weight of down or feathers , of cotton
6203 4290 13		Other men's bib and brace overalls with thermal lining, of cotton , industrial and career apparel
6203 4290 14		Other men's bib and brace overalls with thermal lining, of cotton , industrial and career apparel
6203 4290 15		Other boys' bib and brace overalls with thermal lining, of cotton

6203 4290 16		Other men's bib and brace overalls , of cotton , industrial and career apparel
6203 4290 17	B	Other men's bib and brace overalls of cotton
6203 4290 19	A	Other boys' bib and brace overalls of cotton
6203 4290 21		Men's or boys' trousers , breeches , containing \geq 15 % by weight of down or feathers and water fowl, down content rate \geq 35% industrial and career apparel, or containing \geq 10% by weight of down or feathers, of cotton
6203 4290 29		Men's or boys' trousers , breeches , containing \geq 15 % by weight of down or feathers and water fowl, down content rate \geq 35% or containing \geq 10% by weight of down or feathers , of cotton
6203 4290 30		Men's or boys' trousers, breeches, playsuit , with thermal lining , of cotton
6203 4290 41		Men's or boys' trousers, breeches, playsuit, including boys' No. 8 - No. 18 of cotton , playsuit , without thermal lining
6203 4290 49	A	Other boys' trousers, breeches, of cotton, playsuit, without thermal lining
6203 4290 51		Men's or boys' trousers, breeches, of cotton with thermal lining , industrial and career apparel (other than playsuit)
6203 4290 59		Men's or boys' trousers, breeches, of cotton with thermal lining , other than playsuit
6203 4290 61		Men's trousers, breeches, of cotton industrial and career apparel , other than playsuit , without thermal lining
6203 4290 62	A	Men's trousers, breeches, including boys' No. 8 -No. 18 of cotton other than playsuit without thermal lining
6203 4290 69	A	Other boys' trousers breeches, of cotton other than playsuit, without thermal lining
6203 4290 91		Men's or boys' shorts of cotton containing \geq 15% by weight of down or feathers and water fowl down content rate \geq 35% or containing \geq 10% by weight of down or feathers
6203 4290 92		Other men's or boys' shorts of cotton, playsuit
6203 4290 99		other men's or boys' shorts of cotton other than playsuit
		-of synthetic fibres
6203 4310		-Arabian trousers
6203 4310 10		Men's or boys' Arabian trousers of synthetic fibres, containing 15% by weight of down or feathers and water fowl, down content rate \geq 35%, or containing \geq 10% by weight of down or feathers
6203 4310 90		Men's or boys' Arabian trousers of synthetic fibres
6203 4390		-Other

6203 4390 11		Men's or boys' bib and brace overalls, industrial and career apparel, containing $\geq 15\%$ by weight of down or feathers and water fowl down content rate $\geq 35\%$ or containing $\geq 10\%$ by weight of down or Feathers , of synthetic fibres
6203 4390 12		Men's or boys' bib and brace overalls, containing $\geq 15\%$ by weight of down or feathers and water fowl, down content rate $\geq 35\%$ or containing $\geq 10\%$ by weight of down or feathers, of synthetic fibres
6203 4390 13		Other men's bib and brace overalls with thermal lining , industrial and career apparel, of synthetic fibres
6203 4390 14		Other men's bib and brace overalls with thermal lining, of synthetic fibres
6203 4390 15	A	Other boys' bib and brace overalls with thermal lining of synthetic fibres
6203 4390 16		Other men's bib and brace overalls, industrial and career apparel, of synthetic fibres
6203 4390 17		Other men's bib and brace overalls of synthetic fibres
6203 4390 19	A	Other boys' bib and brace overalls of synthetic fibres
6203 4390 21		Men's or boys' trousers, breeches, industrial apparel containing $\geq 15\%$ by weight of down or feathers and water fowl, down content rate $\geq 35\%$ or containing $\geq 10\%$ by weight of down or feathers, of synthetic fibres
6203 4390 29		Men's or boys' trousers , breeches , containing $\geq 15\%$ by weight of down or feathers and water fowl, down content rate $\geq 35\%$ or containing $\geq 10\%$ by weight of down or feathers, of synthetic fibres
6203 4390 31		Men's or boys' trousers, breeches containing $\geq 36\%$ by weight of wool or fine animal hair, with thermal lining, industrial and career apparel, of synthetic fibres
6203 4390 39		Men's or boys' trousers, breeches, containing $\geq 36\%$ by weight of wool or fine animal hair with thermal lining, of synthetic fibres
6203 4390 41		Men's trousers, breeches, containing $\geq 36\%$ by weight of wool or fine animal hair industrial and career apparel, without thermal lining, of synthetic fibres
6203 4390 42		Men's trousers, breeches, including boys' No.8 - No.18, containing $\geq 36\%$ by weight of wool or fine animal hair without thermal lining, of synthetic fibres
6203 4390 49	A	Boys' trousers , breeches , containing $\geq 36\%$ by weight of wool or fine animal hair, without thermal lining, of synthetic fibres
6203 4390 50		Other men's or boys' trousers, breeches with thermal lining , playsuit, of synthetic fibres
6203 4390 61	A	Other men's trousers breeches, of synthetic fibres, without thermal lining, including boys' No. 8 - No. 18 , playsuit

6203 4390 69	A	Other boys' trousers, breeches, playsuit, of synthetic fibres , without thermal lining
6203 4390 71		Other men's or boys' trousers, breeches, with thermal lining , industrial and career apparel, other than playsuit , of synthetic fibres
6203 4390 79		Other men's or boys' trousers, breeches with thermal lining, other than playsuit or ski trousers of synthetic fibres
6203 4390 81		other men's trousers , breeches , industrial and career apparel, of synthetic fibres other than playsuit or ski trousers without thermal lining
6203 4390 82	A	Other men's trousers , breeches including boys' No. 8
		- No. 18 of synthetic fibres, other than playsuit or ski trousers without thermal lining
6203 4390 89	A	Other boys' trousers, breeches of synthetic fibres,
		Other than playsuit or ski trousers without thermal
6203 4390 91		Men's or boys' shorts , containing \geq 15% by weight of down or Feathers and water fowl down content rate \geq 35% or containing \geq 10% by weight of clown or Feathers
6203 4390 92		Men's or boys' shorts , playsuit , of synthetic fibres
6203 4390 93		Other men's or boys' shorts, other than playsuit, of synthetic fibres
6203 4390 99		Other men's or boys' trousers of synthetic fibres
		-of Other textile materials
6203 4910		-Arabian trousers
6203 4910 10		Men's or boys' Arabian trousers of artificial fibres, containing 15% by weight of down or feathers and water fowl, down content rate \geq 35%, or containing \geq 10% by weight of down or feathers
6203 4910 20		Men's or boys' Arabian trousers of artificial fibres
6203 4910 30		Men's or boys' Arabian trousers of other textile materials, containing \geq 15% by weight of clown or feathers and water fowl down content rate \geq 35% , or containing \geq 10% by weight of down or feathers
6203 4910 90		Men's or boys' Arabian trousers of other textile materials
6203 4990		-Other
6203 4990 11		Men's bib and brace overalls with thermal lining, of artificial fibres
6203 4990 12	A	Boys' bib and brace overalls, with thermal lining, of artificial fibres
6203 4990 13		Men's bib and brace overalls of artificial fibres
6203 4990 19	A	Boys' bib and brace overalls of artificial fibres

6203 4990 21		Men's or boys' trousers, breeches, with thermal lining, containing 36% by weight of wool or fine animal hair of artificial fibres
6203 4990 22		Men's or boys' trousers , breeches , containing $\geq 36\%$ by weight of wool or fine animal hair of artificial fibres, without thermal lining
6203 4990 23		Men's or boys' trousers, breeches, with thermal lining , playsuit , of artificial fibres
6203 4990 24		Men's or boys' trousers, breeches, playsuit, of artificial fibres without thermal lining
6203 4990 25		Men's or boys' trousers, breeches, with thermal lining , of artificial fibres , other than playsuits
6203 4990 26		Men's or boys' trousers, breeches, of artificial fibres, without thermal lining , other than playsuits
6203 4990 27		Men's or boys' shorts of artificial fibres, containing 36% by weight of wool or fine animal hair
6203 4990 28		Men's or boys' shorts , playsuit , of artificial fibres
6203 4990 29		Men's or boys' shorts of artificial fibres, other than playsuit
6203 4990 31		Men's or boys' bib and brace overalls, containing 70% by weight of silk
6203 4990 32		Men's or boys' trousers, breeches, containing $\geq 70\%$ by weight of silk, with thermal lining
6203 4990 33		Men's or boys' trousers, breeches, containing $\geq 70\%$ by weight of silk without thermal lining
6203 4990 34		Men's or boys' shorts, containing $\geq 70\%$ by weight of silk
6203 4990 35		Men's or boys' bib and brace overalls, containing $< 70\%$ by weight of silk, with thermal lining
6203 4990 36		Men's or boys' bib and brace overalls, containing $< 70\%$ by weight of silk, without thermal lining
6203 4990 37		Men's or boys' trousers , breeches , containing $< 70\%$ by weight of silk with thermal lining
6203 4990 38		Men's or boys' trousers , breeches , containing $< 70\%$ by weight of silk without thermal lining
6203 4990 39		Men's or boys' shorts, containing $< 70\%$ by weight of silk
6203 4990 41		Men's or boys' trousers, breeches, cotton within limitations , with thermal lining , of other textile materials

6203 4990 42		Men's or boys' trousers, breeches, cotton within limitations, of other textile materials without thermal lining
6203 4990 49		Men's or boys' shoes, cotton within limitations, of other textile materials
6203 4990 51		Men's or boys' trousers, breeches, wool within limitations with thermal lining, of other textile materials
6203 4990 62		Men's or boys' trousers, breeches, wool within limitations of other textile materials, without thermal lining
6203 4990 59		Men's or boys' shorts of other textile materials, wool within limitations
6203 4990 61		Men's or boys' trousers, breeches, with thermal lining, of other textile materials, man-made fibres within limitations
6203 4990 62		Men's or boys' trousers, breeches without thermal lining, of other textile materials, man-made fibres within limitations
6203 4990 69		Men's or boys' shorts, of other textile materials man-made fibres within limitations
6203 4990 91		Men's or boys' bib and brace overalls, with thermal lining , of other textile materials
6203 4990 92		Men's or boys' bib and brace overalls , of other textile materials , without thermal lining
6203 4990 93		Men's or boys' trousers, breeches, with thermal lining , of other textile materials
6203 4990 94		Men's or boys' trousers , breeches of other textile materials without thermal lining
6203 4990 99		Men's or boys' shorts of other textile materials
62 12		Brassieres, girdles, corsets, braces, suspenders, garters and similar articles and parts thereof, whether or not knitted or crocheted
		-Brassieres
6212 1010	A	-of man-made fibres
6212 1090		-of other textile materials
6212 1090 10	A	Brassieres of wool or fine animal hair (whether or not knitted or crocheted)
6212 1090 20	A	Brassieres, whether or not knitted or crocheted, of cotton
6212 1090 31	A	Brassieres of silk, whether or not knitted or crocheted , containing 70% by weight of silk
6212 1090 39	A	Brassieres of silk, whether or not knitted or crocheted, containing < 70% by weight of silk
6212 1090 90	A	Brassieres, whether or not knitted or crocheted, of other textile materials
		-Girdles and panty-Girdles
6212 2010	A	-of man-made fibres

6212 2090		-Of other textile materials
6212 2090 10	A	Girdles and panty-girdles, whether or not knitted or crocheted of wool or fine animal hair
6212 2090 20	A	Girdles and panty-girdles of cotton whether or not knitted or crocheted
6212 2090 31	A	Girdles and panty-girdles of silk whether or not knitted or crocheted containing 70% by weight of silk
6212 2090 39	A	Girdles and panty-girdles of silk whether or not knitted or crocheted containing < 70% by weight of silk
6212 2090 90	A	Girdles and panty-girdles, whether or not knitted or crocheted of other textile materials
		-Corselettes
6212 3010	A	-of man-made fibres
6212 3090		-Of other textile materials
6212 3090 10	A	Crosettes of wool or fine animal hair
6212 3090 20	A	Crosettes, whether or not knitted or crocheted, of cotton
6212 3090 31	A	Crosettes of silk whether or not knitted or crocheted, containing 70% by weight of silk
6212 3090 39	A	Crosettes of silk whether or not knitted or crocheted, containing < 70% by weight of silk
6212 3090 90	A	Crosettes of other textile materials, whether or not knitted or crocheted
		-Other
6212 9010		-Of man-made fibres
6212 9090		-Of other textile materials
6212 9090 10		Braces, suspenders, garters and similar articles, of wool and plastics or rubber, whether or not knitted or crocheted
6212 9090 20		Braces, suspenders, garters and similar articles, of cotton and plastics/rubber whether or not knitted or crocheted
6212 9090 31		Braces, suspenders, garters and similar articles, of silk, containing 70% by weight of silk whether or not knitted or crocheted
6212 9090 39		Braces, suspenders, garters and similar articles, of silk, containing < 70% by weight of silk whether or not knitted or crocheted
6212 9090 90		Braces, suspenders, garters and similar articles and parts thereof, of other textile materials, whether or not knitted or crocheted
85. 01		Electric motors and generators (excluding generating sets)
		-Motors of an output not exceeding 37. 5W
8501. 1010		-for use in toys
		-Other
8501. 1091		-Micromotors with a housing size of 20mm or more but not exceeding 39mm

8501. 109101		Precision micromotors for the movement of laser disc players (1W≤ power≤ 18W . 20mm≤ diameter≤30mm)
8501. 109102		Micro motor with a video camera, camcorder (≤ 0.5 watt power≤ 10 watts). 20mm≤ diameter≤39mm)
8501. 1091 90		Other micromotors with a housing size of 20mm or more but not exceeding 39mm (output≤37. 5W)
8501. 1099		-Other
8501. 1099 01		Micromotors, power≤ 0. SW. not for movements of laser disc players (cylindric diameter≤6mm , high≤ 25 mm oblate diameter≤ 15mm. thick≤5mm)
8501. 109902		Precision micro motor with laser videodisc (≤ 0. 5 watt power≤ 2 watts) , 5mm≤ diameter≤ 20mm
8501.1099 02		Precision micromotors for video camera, camcorder, movement of laser disc players (0. SW≤ power≤2W, 5 mm≤ Diameter < 20mm)
8501. 1099 90		Other micromotors (output power≤ 37. 5W)
8501. 2000		-universal ac/DC motors of an output exceeding 37. 5 W
		-Other DC motors DC generators
8501. 3100		-Of an output not exceeding 750 W
8501. 3200		-Of an output exceeding 750 W but not exceeding 75 KW
8501. 3300		-Of an output exceeding 75 KW but not exceeding 375 KW
8501. 3400		-Of an output exceeding 375 KW
8501. 4000		-Other ac motors, single-phase
		-Other ac motors, multi-phase
8501. 5100		-Of an output not exceeding 750 W
8501. 5100 10	3	Generators (power 40W, frequency = 600 - 2000Hz. harmonic distortion < 10%)
8501. 5100 90		Other AC motors, multi-phase, output power≤750W
8501. 5200		-Of an output exceeding 750 W but not exceeding 75 KW
8501. 5300		-Of an output exceeding 75 KW
8501. 530001		AC asynchronous traction motor for high speed electric locomotive (for electric locomotives with the speed of 200KM/h)
8501. 5300 90		Other AC electric motors, multi-phase, output power > 75 KW
		-ac generators (alternators)
8501. 6100		-Of an output not exceeding 75 KVA
8501. 6200		-Of an output exceeding 75 KVA but not exceeding 375 KVA
8501. 6300		-Of an output exceeding 375 KVA but not exceeding 750 KVA
		-Of an output exceeding 750 KVA
8501. 6410	0	-Of an output exceeding 750 KVA but not exceeding 350 MVA
8501. 6420	0	-Of an output exceeding 350 MVA but not exceeding 665 MVA
8501. 6430	0	-Of an output exceeding 665 MVA

85. 44		Insulated (including enameled or anodized) wire, cable (including co-axial cable) and other insulated electric conductors, whether or not fitted with connectors optical fibre cables, made up of individually sheathed fibres, whether or not assembled with electric conductors or fitted with connectors
		-winding wire
8544. 1100	A	-of copper
8544. 1900	A	-Other
8544. 2000	A	-Co-axial cable and other co-axial electric conductors
		— Ignition wiring sets and other wiring sets of a kind used in vehicles, aircraft or ships
8544. 3020		-for Motor vehicles
8544. 302001	A	Wiring harness for electronic control diesel engines of vehicles
8544. 3020 90	A	Other ignition wiring sets and other wiring sets of a kind used for motor vehicles
8544. 3090	A	-Other
		-Other electric conductors, for a voltage not exceeding 1000 V
		-Fitted with Connectors
		-For a voltage not exceeding 80 V
8544. 4211	A	-Electric cable
8544. 4219	A	-Other
		-for a voltage exceeding 80V but not exceeding 1000 V
8544. 4221	A	-Electric cable
8544. 4229	A	-Other
		-Other
		-For a voltage not exceeding 80 V
8544. 4911	A	-Electric cable
8544. 4919	A	-Other
		-for a voltage exceeding 80 V but not exceeding 1000 V
8544. 4921	A	-Electric cable
8544. 4929	A	-Other
		-Other Electric conductors, for a Voltage exceeding 1000 V
		-Electric cable
8544. 6012	A	-For a voltage not exceeding 35 KV
8544. 6013	A	-For a voltage exceeding 35 KV. but not exceeding 110 KV
8544. 6014	A	-For a voltage exceeding 110 KV, but not exceeding 220 KV
8544. 6019	A	-Other
8544. 6090		-Other

8544. 609001	A	gas - insulated transmission electric wire , rated voltage \geq 500Kv
8544. 6090 90	A	
8544. 7000	A	-optical fibre cables
85. 18		Microphones and stands therefore loudspeakers, whether or not mounted in their enclosures headphones earphones, whether or not combined with a microphone, and sets consisting of a microphone and one or more loudspeakers audio-frequency electric amplifiers electric sound amplifier sets
8518. 1000		-Microphones and stands therefore
8518. 1000 01		Microphones, telecommunication use, frequency between 300Hz - 3400Hz(with a diameter \leq 10 mm and a height \leq 3mm)
8518. 1000 90		Other microphones and stands therefore
		-Loudspeakers. whether or not mounted in their enclosures
8518. 2100	A	-single Loudspeakers, mounted in their enclosures
8518. 2200	A	-Multiple Loudspeakers, mounted in the same enclosure
8518. 2900		-Other
8518. 3000		-Headphones and earphones, whether or not combined with a microphone, and sets consisting of a microphone and one or more loudspeakers
8518. 4000		-Audio-frequency Electric amplifiers
8518. 4000 01		Amplifiers for electric equipment
8518. 4000 90	A	Other audio-frequency electric amplifiers
8518. 5000		-Electric Sound amplifier sets
8518. 9000		-Parts
8518. 9000 01		Pans for goods of heading No. 8518400001 (for telephone repeaters falling within ITA)
8518. 9000 90		Other parts of goods of heading No.. 8518
40 01		Natural rubber, balata, gutta-percha, guayule, chicle and similar natural gums, in primary forms or in plates, sheets or strip
4001 1000 暂	AB	-natural rubber latex whether or not prevulcanized
		-Natural rubber in other forms
4001 2100 暂	AB	-Smoked sheets
4001 2200 暂		-Technically specified natural rubber (TSNR)
4001 2900		-Other
4001 3000		-Balata, gutta-percha, guayule, chicle and similar natural gums
40 05		Compounded rubber, unvulcanized, in primary forms or in plates, sheets or strip
4005 1000		-Compounded with Carbon black or Silica
4005 2000		-Solutions dispersions other than those of subheading No. 4005 10
		-Other

4005 9100		-Plates, sheets and strip
4005 9900		-Other
40 15		Articles of apparel and clothing accessories (including gloves) , for all purposes, of vulcanized rubber other than hard rubber
		-Gloves mitens and mias
4015 1100		-surgical
4015 1900		-Other
		-Other
4015 9010		-for medical purpose
4015 9090		-Other
90. 13		Liquid crystal devices not constituting articles provided for more specifically in other headings lasers, other than laser diodes other optical appliances and instruments, not specified or included elsewhere in this Chapter
9013. 1000		-Telescopic sights for fitting to arms periscopes telescopes designed to form parts of machines, appliances, instruments or apparatus of this Chapter or Section XVI
9013. 2000		-Lasers, other than laser diodes
9013. 2000 暂 01		980nm, 1480nm pump laser of SDH \geq 2. 5 GB/s, optical transmission equipment for wave-division multi-complexing
9013. 2000 暂 02		Gas laser generators for laser cutting machines, cutting power 2 kW
9013. 2000 20	3	AVLIS, MLIS. CRISLA laser systems
9013. 2000 30	j	Argon ion lasers (average output power \geq 40W, working wavelength = 400nm - 515nm)
9013. 2000 40	3	Alexandrite lasers (bandwidth \leq 0. 005 nm , repetition rate > 125 Hz , power > 30W)
9013. 2000 50	j	Pulsed carbon dioxide lasers (repetition rate > 250Hz , power > 500W, pulse width < 200ns)
9013. 2000 60	j	Pulsed excimer lasers (Xef, Xecl or KrF type, recurrent rate > 250Hz , power > 500W)
9013. 2000 70	j	Copper vapor lasers (average output power \geq 40W, working wave length = 500nm - 600nm)
9013. 2000 80	j	Neodymium doped laser (not glass laser) (Dual-use items controlled commodity)
9013. 2000 90		Other lasers (other than laser diodes)
		-Other devices, appliances and instruments
9013. 8010		-Hand magnifying glasses
9013. 8020		---" Door eyes"
9013. 8030		-Liquid crystal display panel
9013. 8030 10		size \leq 10.1 inch liquid crystal display panel
9013. 8030 20		10.1 inch < size \leq 32 inch liquid crystal display panel

9013. 8030 90		Other liquid crystal display panel
9013. 8090		-Other
		-Parts and accessories
9013. 9010		-For goods of subheading No. 9013. 1000 and 9013. 2000
9013. 9020		-For goods of subheading No. 9013. 8030
9013. 9090		-Other
90. 01		Optical fibres and optical fibre bundles optical fibre cables, other than those of heading N0 85. 44 sheets and plates of polarizing material lenses (including contact lenses) , prisms, mirrors and other optical elements , of any material, unmounted, other than such elements of glass not optically worked
9001. 1000		-Optical fibres, optical fibre bundles and cables
9001. 1000 01		Dispersion-unshifted single-mode fibers (G. 652 including G652A.C652B .G652C .G652D)
9001. 1000 09		Other optical fibres (other than goods of heading No. 85. 44)
9001. 1000 90		Optical fibres bundles and cables(other than goods of heading No. 85. 44)
9001. 2000		-Sheets and plates of polarizing material
9001. 2000 01		Sheets and plates of polarizing material for LCD panels
9001. 200002		Plates of polarizing material for LCD projector
9001. 200003		Plates of polarizing material for digital film projector
9001. 2000 90		Other sheets and plates of polarizing material
9001. 3000		-contact lenses
		-Spectacle lenses of glass
9001. 4010		-Photochromic
		-Other
9001. 4091		-for sunglasses
9001. 4099		-Other
		-Spectacle lenses of other materials
9001. 5010		-photochromic
		-Other
9001. 5091		-for sunglasses
9001. 5099		-Other
		-Other
9001. 9010		---Color filter
9001. 9090		-Other
9001. 909001		Optical elements of micro-optical assemblies for optical communications (thin film filters with working wave-length 800nm - 1700nm, automatic selfoc lens, faraday rotation isolator)
9001. 909002		Micro-lens (laser transceiver devices for laser video disc)

9001. 909003		Fresnel lens projection screen (screen diagonal 80 inches, projection ratio \leq 0. 26, gain ratio \geq 0. 8, lens spacing \leq 100 micron)
9001. 909004		Optical components for hack -light modules of LCD (including light guide baffle -board , diffusion sheet, brightening sheet)
9001. 909005		Polarizer for LCD projector
9001. 909006		Polarizing element with digital movie projector
9001. 9090 90		other optical elements, not specified or included elsewhere in the heading No. 9001 (other than of glass made elements not optically processed)
90. 26		Instruments and apparatus for measuring or checking the flow, level, pressure or other variables of liquids or gases (for example, flow meters, level gauges, manometers, heat meters), excluding instruments and apparatus of heading No. 90. 14, 90. 15, 90. 28 or 90. 32
9026. 1000		-For measuring or checking the flow or level of liquids
		-For measuring or checking pressure
9026. 2010		---Pressure/differential pressure transducers
9026. 2010 10	3	Manganese-copper pressure gauges (pressure > 10GPa)
9026. 2010 90		Other pressure .differential pressure transducers
9026. 2090		-Other
9026. 2090 10	3	Pressure sensor (not glass laser) (Dual - use items controlled commodity)
9026. 2090 90		Other instruments and equipment for measuring or checking pressure
		-Other instruments or apparatus
9026. 8010		-Measurement of gas flow apparatus and device
9026. 8090		-Other
9026. 9000		-Parts and accessories
64 03		Footwear with outer soles of rubber, plastics, leather or composition leather and uppers of leather
		-Sports footwear
6403 1200		-Ski-boots, cross-country Ski Footwear and snowboard boots
6403 1200 10	FE	Ski-boots, with uppers of leather of wild animals
6403 1200 90		Ski-boots cross-country ski footwear and snowboard boots, with outer soles of rubber, plastics, leather or composition leather and uppers of leather
6403 1900		-Other
6403 1900 10	FE	Other sports footwear with uppers of leather of wild animals
6403 1900 90		Other sports footwear with outer soles of rubber, plastics, leather or composition leather and uppers of leather

6403 2000		-Footwear with outer soles of leather, and uppers which consist of leather straps across the instep and around the big toe
6403 2000 10	FE	Footwear with outer soles of leather and with uppers of leather straps of wild animals
6403 2000 90		Footwear with outer soles of leather and with uppers which consist of leather straps across the instep and around the big toe
6403 4000		-Other Footwear, incorporating a protective metal toe-cap
6403 4000 10	FE	Other footwear, incorporating a protective metal toe-cap with uppers of leather of wild animals
6403 4000 90		Other footwear, incorporating a protective metal toe-cap, with outer soles of rubber, plastics, leather or composition leather and uppers of leather
		-Other footwear with outer soles of leather
		--Covering the ankle
		---Covering the ankle but not Covering the calf, by length of inner soles
6403 5111		-Less than 24cm
6403 5111 10	FE	Other footwear with outer soles of leather and uppers of leather covering the ankle but lower than crus, with uppers of leather of wild animals (inner sole length < 24cm other than sports boots)
6403 5111 90		Footwear with outer soles of leather and uppers of leather covering the ankle but lower than crus, with uppers of leather (inner sole length < 24cm, other than sports boots)
6403 5119		-Other
6403 5119 10	FE	Other footwear with outer soles of leather and uppers of leather covering the ankle but lower than crus, with uppers of leather of wild animals, other than sports footwear
6403 5119 90		other footwear with outer soles of leather and uppers of leather, covering the ankle but lower than crus, other than sports footwear
		-Other, by length of inner soles
6403 5191		-Less than 24cm
6403 5191 10	FE	Footwear with outer soles of leather and uppers of leather, covering the ankle , with uppers of leather of wild animals(inner soles < 24cm, other than sports footwear)
6403 5191 90		Footwear with outer soles of leather and uppers of leather, covering the ankle (inner soles < 24cm other than sports footwear)
6403 5199		-Other
6403 5199 10	FE	Footwear with outer soles of leather and uppers of leather, covering the ankle, with uppers of leather of wild animals(other than sports footwear)

6403 5199 90		Footwear with outer soles of leather and uppers of leather, covering the ankle, with uppers of leather (other than sports footwear)
6403 5900		-Other
6403 5900 10	FE	Other footwear with outer soles of leather and uppers of leather of wild animals (other than sports foot-wear)
6403 5900 90		other footwear with outer soles of leather and uppers of leather of other animals (other than sports foot-wear)
		-Other footwear
		--Covering the ankle
		---Covering the ankle but not Covering the calf, by length of inner soles
6403 9111		-Less than 24cm
6403 9111 10	FE	Footwear with outer upper of feather, covering the ankle but lower than crus, with uppers of wild animal leather, inner soles of rubber or plastic and the length < 24cm, outer soles of composition leather, other than sports footwear
6403 9111 90		Footwear with outer upper of feather, covering the ankle but lower than crus with inner soles of rubber or plastic and the length < 24cm, outer soles of composition leather other than sports footwear
6403 9119		-Other
6403 9119 10	FE	Footwear covering the ankle but lower than crus, with outer soles of rubber, plastics , leather of composition leather and uppers of wild animal feather, other than sports footwear
6403 9119 90		Footwear covering the ankle but lower than crus, with outer soles of rubber, plastics , leather of composition leather and uppers of leather, other than sports footwear
		-Other, by length of inner soles
6403 9191		-Less than 24cm
6403 9191 10	FE	Footwear covering ankle, with outer uppers of leather of wild animal inner soles of rubber, plastic and the length < 24cm, outer soles of composition leather, other than sports footwear
6403 9191 90		Footwear covering ankle , with outer uppers of leather, inner soles of rubber, plastic and the length < 24cm , outer soles of composition leather, other than sports footwear
6403 9199		-Other
6403 9199 10	FE	Footwear covering the ankle with outer soles of rubber, plastics , leather or composition leather and uppers of leather, of wild animals other than sports footwear
6403 9199 90		Footwear covering the ankle with outer soles of rubber , plastics , leather or composition leather and uppers of leather, of other animals, other than sports foot-wear
6403 9900		-Other

6403 9900 10	FE	Other footwear with outer soles of rubber, plastics, leather or composition leather and uppers of leather of wild animals , other than sports footwear
6403 9900 90		Other footwear with outer soles of rubber, plastics, leather or composition leather and uppers of leather of other animals, other than sports footwear
64 04		Footwear with outer soles of rubber, plastics, leather or composition leather and uppers of textile materials
		-Footwear with outer soles of rubber or plastics
6404 1100		-sports Footwear, tennis shoes, basketball shoes, gym shoes, training shoes and the like
6404 1900		-Other
6404 2000		-Footwear with outer soles of leather or composition leather
64 02		Other footwear with outer soles and uppers of rubber or plastics
		-sports Footwear
6402 1200		-Ski-boots, cross-country ski footwear and snow-board boots
6402 1200 10	EF	Inverted skiing boot with rubber plastic sole and hair of endangered animals (including cross-counory skiing boots and boots for skin)
6402 1200 90		Other ski-boots cross-country ski footwear and snowboard boots, with outer soles and upper of rubber or plastics
6402 1900		-Other
6402 1900 10	EF	Other sports shoes and boots containing endangered animal hair and hide (rubber and plastic shoes and inverted)
6402 1900 90		Other sport footwear, with outer soles and uppers of rubber or plastics (rubber and plastic shoes and inverted)
6402 2000		-Footwear with upper straps or thongs Assembled to the sole by means of plugs
		-Other footwear
6402 9100		--Covering the ankle
		-Other
6402 9910		-with uppers of rubber
		-with uppers of plastics
6402 9921		-With substrate of woven fabrics or other textile materials
6402 9929		-Other
63 10		Used or new rags, scrap twine, cordage, rope and cables and worn out articles of twine, cordage, rope or cables, of textile materials
6310 1000		-Sorted

6310 1000 10	AP	not used or new rags, scrap twine, cordage, rope and cables and worn out articles of twine, cordage, rope or cables of textile materials sorted
6310 1000 90	9	Other rags , scrap twine, cordage, rope and cables and worn out articles of twine, cordage, rope or cables, of textile materials, sorted
6310 9000		-Other
6310 9000 10	AP	not used or new rags , scrap twine , cordage, rope and cables and worn out articles of twine, cordage, rope or cables of textile materials
6310 9000 90	9	Other rags, scrap twine, cordage, rope and cables and worn out articles of twine, cordage, rope or cables, of textile materials
63 07		Other made up articles, including dress patterns
6307 1000		-Floor-cloths dish-cloths dusters and similar cleaning cloths
6307 2000		-Life-jackets and life-belts
6307 9000		-Other
6307 9000 11		Label, chain-off thread and fringes, including laces of corsets shoelaces and similar articles, of cotton
6307 9000 19		Label , chain-off thread and fringes , including laces of corsets shoelaces and similar articles , of other textile materials
6307 9000 20		Towel made up of napping or tufted of cotton
6307 9000 30		Outershell of pillow, of cotton
6307 9000 40		Outershell of down quilt or comforter of cotton , containing cotton < 85%
6307 9000 51		Towel for operation and other towel, of cotton
6307 9000 59		Towel of man-made fibres, not elsewhere specified or included
6307 9000 61		Cotton facing refrigerating bag
6307 9000 62		Man-made textile materials facing refrigerating bag
6307 9000 69		Other textile materials facing refrigerating bag
6307 9000 90		Other made up articles, not elsewhere specified or included of other textile materials
63 01		Blankets and travelling rugs
6301 1000		-Electric blankets
6301 2000		-Blankets(Other than Electric Blankets) and travelling rugs , of wool or of fine animal hair
6301 2000 10		Blankets (other than electric blankets) and travelling rugs , of wool or fine animal hair , length ≤ 3m
6301 2000 20		Other blankets (other than electric blankets) and travelling rugs, of wool or of fine animal hair, length > 3m
6301 3000		-Blankets (Other than Electric Blankets) and travelling rugs, of cotton

6301 4000		-Blankets (Other than Electric blankets) and travelling rugs, of synthetic fibres
6301 9000		-Other blankets and travelling rugs
6301 9000 10		Blankets (other than electric blankets) and travelling rugs of artificial fibres
6301 9000 20		Blankets (other than electric blankets) and travelling rugs of silk, containing 85% , by weight of silk or spun silk
6301 9000 90		Other blankets (other than electric blankets) and travelling rugs, of other textile materials