

Guide of China's Import from Indonesia 2015



ASEAN-CHINA CENTRE
中国 — 东盟 中心

Contents

I . Overview of China-ASEAN Economic and Trade Cooperation	1
II . Profile of China-Indonesia Bilateral Trade.....	2
III. List of China's Agricultural Imports from Indonesia	3
(I) Selection Method	3
(II) List of Main Agricultural Imports	3
(III) Situation of Import Tariff Quotas of China's Agricultural Products	5
1. List of agricultural products subject to the administration of import tariff quotas	6
2. The import tariff quotas management system of agricultural products	6
(IV) Distribution of Import Tariff Quotas of Agricultural Products in 2015.....	11
1. Distribution of import tariff quotas of grains.....	11
2. Distribution of import tariff quota of cotton	13
3. Distribution of import tariff quota of sugar	14
IV. List of China's Non-agricultural Imports from Indonesia	16
(I) Selection Method	16
(II) List of Main Non-agricultural Imports	16
V . Process Management of China's Imports from INDONESIA	18
(I) Inspection & Quarantine	18
(II) Customs Clearance	19
(III) Cooperation between customs and inspection & quarantine departments.....	21
Appendix I	23
Appendix II	24
Appendix III	41

I . Overview of China-ASEAN Economic and Trade Cooperation

China-ASEAN FTA is the first FTA that China signed with other economies. And it is the biggest established FTA. ASEAN is made up by the ten member states of Indonesia, Malaysia, Philippines, Singapore, Thailand, Brunei Darussalam, Viet Nam, Lao PDR, Myanmar and Cambodia which covers 1.85 billion people and 1.4 thousand square kilometers. China and ASEAN Member signed the Framework Agreement on China-ASEAN Comprehensive Economic Cooperation at the sixth China-ASEAN Summit in November 2002. The establishment of China-ASEAN free trade area enhances the close economic and trade relations between the two parties, and also contributes to the economic development of Asia and the world at large.

According to the database of the commodity trade of the United Nations, China-ASEAN trade rose at an annual rate of about 20% from over \$50 billion to \$480 billion between 2002 and 2014. And the bilateral accumulated investment is over \$1000. China-ASEAN trade increased fast except that in 2012 since the Global Financial Crisis of 2008, and accounted for 11.16% of China's foreign trade. China-ASEAN trade had been in favor of the ASEAN side during the 2000-2011 period. But China's trade surplus appeared in 2012 and the surplus was \$44.53 billion in 2013. Increasing imports from ASEAN should receive much attention, and it will contribute to China's trade balance.

ASEAN has comparative advantages in products such as rice, fish, wood, etc. in terms of the weather and natural resources. China should import the products more from ASEAN. Since the entrance into the WTO, China's agricultural foreign trade developed fast, but China's agricultural imports increased faster than its agricultural exports and its agricultural trade deficit grew. On one hand, living standards improvement induces the rapid increase of high-quality agricultural products. On the other hand, China's agriculture faces strong competition as agricultural market is open. China-ASEAN agricultural trade developed slowly and the share of China's agricultural foreign trade decreased although ASEAN was still an important source of China's agricultural imports. Agricultural trade between China and ASEAN dropped by about 5% in 2013. The share of China-ASEAN agricultural trade in China's

agricultural foreign trade declined to 9.3% in 2013 from 10.4% in 2009. The gap between supply and demand of grain exists in China. China and ASEAN are complementary in agricultural products such as fruits, vegetables, fish and etc. These can contribute to economic and trade cooperation of the two parties. Since China-ASEAN FTA strategy was carried out, the two parties cut the import tariffs down and promoted trade facilitation such as the procedures of customs clearance, the etc. The bilateral trade liberalization has made great progress. ASEAN suppliers are lack of understanding import quota administration, inspection and quarantine, import operators, etc. in agricultural trade. This hindered the development of agricultural trade between the two parties.

China will widen the opening up to ASEAN, benefit ASEAN on a basis of equality and mutual benefit in the new era of deepening reform and expanding opening-up. Xi Jinping, China's president, pointed out, "China is pleased to improve China-ASEAN FTA, and will manage to bring the bilateral trade up to \$1 trillion by 2020", and "China is pleased to reinforce sea cooperation, make good use of the China-ASEAN Investment Cooperation Fund", and jointly build the 21st Century Maritime Silk Road. In the new era, to compile *The Guide of China's Imports from ASEAN* will inject new impetus into the bilateral economic and trade development.

II . Profile of China-Indonesia Bilateral Trade

The bilateral economic and trade cooperation between China and Indonesia has achieved an integrated development since the two countries resumed diplomatic relations in 1990. Both as countries with large populations and rich resources, China and Indonesia are complementary in terms of resources, industries and goods structure of imports & exports. China mainly exports electromechanical, communication products, minerals and steel products, etc. to Indonesia, while mainly imports minerals, palm oil, rubber and rubber products, etc. from Indonesia. China has become the second largest trade partner of Indonesia and the first largest source of non-oil/gas product imports.

In 2014, the total volume of trade between Indonesia and China was \$46.921 billion, down 7.73% year on year, of which the export volume of Indonesia to China and its import volume from China were \$16.459 billion and \$30.462 billion respectively, and the trade deficit increased to above \$14 billion, up 68.93% year on

year. In 2014, Indonesia was the largest coal import source of China, who exported 106.36 million tons of coal to China, down 15.39% year on year, accounting for 36.48% of China's total import volume of coal. Due to excess capacity of the global coal industry, unceasing deterioration of market conditions and continuous falling of coal price, the coal export volume of Indonesia to China decreased to \$6.333 billion, down 23.25% year on year.

Joint Statement on Strengthening Comprehensive Strategic Partnership between the People's Republic of China and The Republic of Indonesia was signed in March, 2015. The joint statement points out that the initiative of the 21st-Century Maritime Silk Road proposed by President Xi Jinping and the strategy of the Global Maritime Fulcrum initiated by President Joko Widodo are highly complementary to each other. The two sides will enhance cooperation in the priority areas which include trade, investment and economic development in future. And it will promote the sustained development of economic and trade cooperation between the two countries.

III. List of China's Agricultural Imports from Indonesia

(I) Selection Method

The trade of agricultural products plays an important role in the China-ASEAN trade, thus ASEAN suppliers need a more particular knowledge on the application of quotas, inspection and quarantine of Chinese agricultural products. In order to prepare this guide, the main agricultural products that China imports from ASEAN shall be firstly determined. Regarding the HS 4-bit code as a basis of classifying agricultural products, in accordance with the ordering of sum of agricultural products that China imported from Indonesia in 2014, the agricultural products ranking in the top 30 are selected.

(II) List of Main Agricultural Imports

The list of main agricultural products China imported from Indonesia in 2014 is formed according to UNCOMTRADE. In order to facilitate Indonesia suppliers' export of agricultural products to China, the supervision conditions of main agricultural products imported are listed in appendixes (see details in Appendix I and II).

List of China's Main Agricultural Imports from Indonesia

Number	HS Code	Article Description
1	15 11	Palm oil and its fractions, whether or not refined, but not chemically modified
2	15 17	Margarine; edible mixtures or preparations of animal or vegetable fats or oils or of fractions of different fats or oils of this Chapter, other than edible fats or oils or their fractions of heading No.15 16
3	12 12	Locust beans, seaweeds and other algae, sugar beet and sugar cane, fresh, chilled, frozen or dried, whether or not ground fruit stones and kernels and other vegetable products (including unroasted chicory roots of the variety <i>Cichorium intybus sativum</i>) of a kind used primarily for human consumption, not elsewhere specified or included
4	03 06	Crustaceans , whether in shell or not , live , fresh ,chilled, frozen, dried, salted or in brine smoked crustaceans, whether or not cooked before or during the smoking process crustaceans, in shell, cooked by steaming or by boiling in water, whether or not chilled , frozen , dried , salted or in brine flours, meals and pellets of crustaceans, fit for human consumption
5	19 05	Bread, pastry, cakes, biscuits and other bakers' wares, whether or not containing cocoa communion wafers , empty cachets of a kind suitable for pharmaceutical use, seating wafers, rice paper and similar products
6	15 16	Animal or vegetable fats and oil and fractions thereof, partly or wholly hydrogenated, inter-esterified, reesterified or elaidinized, whether or not refined, but not further prepared
7	15 20	Glycerol, crude glycerol waters and glycerol lyes
8	23 06	Oil-Cake and other solid residues, whether or not ground or in the form of pellets, resulting from the extraction of vegetable fats or oils , other than those of heading No.23 04 or 23 05
9	03 07	molluscs, whether in shell or not, live, fresh, chilled, frozen, dried, salted or in brine; smoked molluscs, whether in shell or not, whether or not cooked before or during the smoking process; flours , meals and pellets of mollusks , fit for human consumption
10	08 01	Coconuts, Brazil nuts and cashew- nuts, fresh or dried, whether or not shelled or peeled
11	03 03	Fish, frozen, excluding fish fillets and other fish meat of heading No. 03 04
12	18 04	Cocoa butter, fat and oil
13	07 14	Manioc, arrowroot, salep, Jerusalem artichokes, sweet potatoes and similar roots and tubers with high starch or inulin content, fresh, chilled, frozen or dried, whether or not sliced or in the form

14	21 06	Food preparations not elsewhere specified or included
15	03 01	Live fish
16	18 03	Cocoa paste, whether or not defatted
17	23 02	Bran , sharps and other residues, whether or not in the form of pellets, derived from the sifting, milting or other working of cereals or of leguminous plants
18	18 05	Cocoa powder, not containing added sugar or other sweetening matter
19	09 01	Coffee, whether or not roasted or decaffeinated coffee husks and skins coffee substitutes containing coffee in any proportion
20	08 03	Bananas, including plantains, fresh or dried
21	21 01	Extracts, essences and concentrates, of coffee, tea or mate and preparations with a basis of these products or with a basis of coffee, tea or mate roasted chicory and other roasted coffee substitutes, and extracts, essences and concentrates thereof
22	14 04	Vegetable products not elsewhere specified or included
23	09 04	Pepper of the genus Piper dried or crushed or ground fruits of the genus Capsicum or of the genus Pimenta
24	14 01	Vegetable materials of a kind used primarily for plaiting (for example, bamboos, rattans, reeds, rushes, osier, raffia, cleaned, bleached or dyed cereal straw, and lime bark)
25	24 01	Unmanufactured tobacco; tobacco refuse
26	52 02	Cotton waste (including yarn waste and garneted stock)
27	09 02	Tea, whether or not flavoured
28	33 01	Essential oils (terpeneless or not) , including concretes and absolutes; resinoids; extracted oleoresins; concentrates of essential oils in fats, in fixed oils, in waxes or the like, obtained by enfleurage or maceration; terpenic byproducts of the deterpenation of essential oils; aqueous distillates and aqueous solutions of essential oils
29	13 01	Lac natural gums, resins, gum-resins and oleoresins (for example, balsams)

(III) Situation of Import Tariff Quotas of China's Agricultural Products

Our country has implemented the import tariff quotas management system to part of agricultural products. Pursuant to the quota quantities as promised in China's schedule of concession and commitments for the trade of goods after entry into the

WTO, determine the annual quantities of the agricultural products subject to the administration of import tariff quotas permitted to enter the market. The import of agricultural products within the quota quantities will apply the in-quota tax rate, and the import of agricultural products outside the quota quantities will be implemented under the relevant provisions of the *Regulations of the People's Republic of China on Import and Export Duties*. Meanwhile, matters such as the authorized agency responsible for allocating import quotas of agricultural products have also been explicitly stipulated.

1. List of agricultural products subject to the administration of import tariff quotas

In accordance with the Interim Measures for the *Administration of Import Tariff Quotas of Agricultural Products* (No. 4 Decree of the Ministry of Commerce and the State Development Planning Commission [2003]), our country implements the import tariff quotas management system to products including wheat, corn, rice, bean oil, colza oil, palm oil, sugar, cotton, wool and wool tops, etc. According to relevant commitments after China joined the WTO, the Ministry of Commerce issues the No.93 bulletin [2005] announcing that China has cancelled the import tariff quotas and import state-run trade management of bean oil, palm oil and colza oil since Jan. 1st, 2006.

At present, the categories of agricultural products subject to the administration of import tariff quotas are respectively: wheat, corn, rice, sugar, cotton, wool and wool tops.

2. The import tariff quotas management system of agricultural products

In accordance with the *Interim Measures for the Administration of Import Tariff Quotas of Agricultural Products* (No. 4 Decree of the Ministry of Commerce and the State Development Planning Commission [2003]) and the *Cancel of Import Tariff Quotas and Import state-run trade management, and Implementation of Automatic Import License of Bean Oil, Palm Oil and Colza Oil* (No.93 Decree of the Ministry of Commerce [2005]), within the year of the Gregorian calendar, the State will, pursuant to the quota quantities as promised in China's schedule of concession and commitments for the trade of goods after entry into the WTO, determine the annual quantities of the agricultural products subject to the administration of import tariff quotas permitted to enter the market.

(1) Basic requirements

Wheat, corn, rice, bean oil, colza oil, palm oil, sugar and cotton shall be subject to state-run trade quotas or non-state-run trade quotas. Those subject to state-run trade quotas shall be imported by state-run trade enterprises; those subject to non-state-run trade quotas may be imported by enterprises with the right of trade, and may also be imported directly by the final users with the right of trade.

Wool and wool tops shall be subject to the management of designated import enterprises, which shall be carried out in accordance with the *Measures for the Administration of Designated Management of Goods Import* (No. 21 Decree of the Ministry of Foreign Trade and Economic Cooperation [2001]) promulgated by the former Ministry of Foreign Trade and Economic Cooperation.

Import tariff quotas of agricultural products shall be global quotas.

The import tariff quotas of sugar, wool and wool tops shall be subject to the distribution of the Ministry of Commerce.

The import tariff quotas of wheat, corn, rice and cotton shall be subject to the distribution of the State Development and Reform Commission (SDRC) in conjunction with the Ministry of Commerce (MOFCOM).

The *Certificates of Import Tariff Quotas of Agricultural Products* are applicable to the imports in the trade forms of general trade, processing trade, barter trade, small-scale border trade, assistance, donation and other forms.

The products entering the bonded warehouses, bonded zones and export processing zones are exempted for the *Certificates of Import Tariff Quotas of Agricultural Products*.

(2) Application of quotas

The period for applying for the import tariff quotas of agricultural goods shall be between Oct. 15th and Oct. 30th of each year (with the exception of the distribution form of drawing the quotas by coming order on the basis of contract). The MOFCOM and the SDRC will promulgate the next year's total quantity of import tariff quotas of each agricultural goods and the specific conditions for the application therefore as well as the tariff serial numbers and applicable tax rates determined by the Customs Tariff Committee of the State Council on the *International Business Daily*, the *China Economic Herald*, the MOFCOM website (<http://www.mofcom.gov.cn>) and the SDRC website (<http://www.sdpc.gov.cn>) one month before the application period. Sugar, wool and wool tops shall be subject to the promulgation of MOFCOM; and wheat, corn, rice

and cotton shall be subject to the promulgation of SDRC.

The agencies authorized by MOFCOM shall, in light of the specific conditions promulgated, accept the applications on sugar, wool, wool tops and the relevant documents submitted, and transfer the qualified applications to the MOFCOM before Nov. 30th (with the exception of the distribution form of drawing the quotas by coming order on the basis of contract), with the copies thereof sent simultaneously to the SDRC.

The agencies authorized by SDRC shall, in light of the specific conditions promulgated, accept the applications on wheat, corn, rice, cotton and the relevant documents submitted, and transfer the qualified applications to the SDRC before Nov. 30th, with the copies thereof sent simultaneously to the MOFCOM.

(3) Distribution of quotas

Import tariff quotas shall be distributed on the basis of the quantity applied for by the applicants, their previous import performance, production capacity and other relevant commercial standards or on the basis of the form of drawing by coming order. The minimum quantity of distribution shall be determined on the basis of the commercially feasible shipping quantity of each category of agricultural products.

The MOFCOM and the SDRC will, before Jan. 1st of each year, issue to the final users the *Certificates of Import Tariff Quotas of Agricultural Products* via their respectively authorized agencies, to which the “Special Seal of the MOFCOM for Certificate of Import Tariff Quotas of Agricultural Products” and the “Special Seal of the SDRC for Certificate of Import Tariff Quotas of Agricultural Products” shall be affixed.

The quotas for state-run trade shall be indicated on the *Certificate of Import Tariff Quotas of Agricultural Products*.

(4) Valid term of quotas

The annual import tariff quotas of agricultural goods shall be implemented since Jan. 1st of each year, and shall be valid within the year of the Gregorian calendar. The *Certificates of Import Tariff Quotas for Agricultural Products* shall be valid from Jan. 1st to Dec. 31st of its current year. The valid term of the *Certificates of Import Tariff Quotas for Agricultural Products* subject to the distribution form of drawing by coming order on the basis of contract shall be carried out in accordance with the detailed implementation rules promulgated.

For the agricultural products subject to import tariff quotas that are shipped out

from the departing port before Dec. 31st of the year and shall arrive at the destination next year, the final user shall, by presenting the *Certificate of Import Tariff Quotas of Agricultural Products* and the relevant certifications, apply for term extension to the original agency that has issued the certificate. The said agency may extend the term after having examined the case, but the term may not be extended to a time later than the end of February of the next year.

(5) Implementation of quotas

The final users shall, pursuant to the relevant provisions of the State on import of the commodities concerned, sign the import contracts by themselves or entrust others to sign the contracts.

For the import of agricultural products for processing trade that is subject to the administration of tariff quotas, the customs shall handle the record-keeping procedures for the processing trade contracts by the *Certificate of Approval for Processing Trade* submitted by the enterprises, and handle the customs clearance procedures by the *Certificate of Import Tariff Quotas of Agricultural Products* submitted where “processing trade” has been indicated under the column of “trade modes”.

Where an enterprise of processing trade fails to re-export the processed products within the prescribed term, it shall go through the writing-off procedures for processing trade contracts within 30 days after the expiration of term. The customs will implement the procedures thereabout according to the relevant provisions on processing trade.

The *Certificate of Import Tariff Quotas of Agricultural Products* will apply the system of one certificate for several batches, that is, a final user in need of importing the products in several batches may go through the customs clearance procedures for several times by the *Certificate of Import Tariff Quotas of Agricultural Products*. A final user shall faithfully fill out the “Column for Final User’s Import” under the *Certificate of Import Tariff Quotas of Agricultural Products* and take the Certificate to the original Certificate issuing agency in exchange for the certificate for the part of quotas that have not gone through the customs clearance procedures.

The excess part of bulk cargos in a batch imported shall be no more than 5% of the batch.

The agricultural products entering the bonded warehouses, bonded zones, export processing zones from outside China and to which import tariff quotas are applied shall be subject to the examination before release and to the supervision and control conducted by the customs in accordance with the relevant provisions. For the

agricultural products exiting or imported from outside the bonded warehouses, bonded zones, export processing zones and to which import tariff quotas are applied, the customs will handle the import procedures by the *Certificate of Import Tariff Quotas of Agricultural Goods* in accordance with the relevant provisions on the administration of import of goods.

A final user shall, within 20 office days after finishing the customs clearance procedures for the final batch of products whose quotas are indicated in the *Certificate of Import Tariff Quotas of Agricultural Products*, hand in the original of the first pages (customs procedure pages for the consignee) of the said Certificate signed and sealed by the customs to the original Certificate issuing agency.

A final user shall, before the end of January of the next year, return the original of the unused first pages (customs procedure pages for the consignee) of the Certificate of the current year to the original Certificate issuing agency.

(6) Adjustment of quotas

Where no contract is concluded before Aug. 15th of the current year for the state-run trade quotas of agricultural products distributed to a final user, the final user may entrust a trade enterprise of any kind with the right of trade to import the products upon the approval of the MOFCOM or the SDRC in accordance with the division of administration as provided in Article 7 of the present Measures. A final user with the right of trade may also import the products directly.

Where a final user holding the Certificate of Import Tariff Quotas of Agricultural Products fails to conclude an import contract for all the quotas already drawn in the current year or fail to fulfill the contract already concluded, it shall return the unfinished quotas to the original Certificate issuing organ before Sep. 15th.

The term for applying for the tariff quotas to be redistributed for the import of agricultural products shall be from Sep. 1st to Sep. 15th of each year (with the exception of the distribution form of drawing by coming order on the basis of contracts). The MOFCOM and the SDRC will respectively promulgate the specific conditions for applying for the tariff quotas to be redistributed on the *International Business Daily*, the *China Economic Herald*, the MOFCOM website (<http://www.mofcom.gov.cn>) and the SDRC website (<http://www.sdpc.gov.cn>) one month before the application period. The applications shall be submitted to the MOFCOM or the SDRC via their respectively authorized agencies.

Sugar, wool and wool tops shall be subject to the promulgation of MOFCOM, and

wheat, corn, rice and cotton shall be subject to the promulgation of SDRC.

A final user that has finished the import tariff quotas distributed of agricultural products before the end of October and has returned the originals of the first pages (customs procedure pages for the consignee) of the *Certificate of Import Tariff Quotas of Agricultural Products* may apply for the tariff quotas to be redistributed.

Before September, 30 of each year, the MOFCOM shall distribute the tariff quotas to be redistributed of bean oil, colza oil, palm oil, sugar, wool and wool tops to the final users (with the exception of the distribution form of drawing by coming order on the basis of contracts), and the SDRC shall distribute the tariff quotas to be redistributed of wheat corn, rice and cotton to the final users.

The tariff quotas to be redistributed shall, in light of the applying conditions promulgated, be distributed according to the form of drawing by coming order. The minimum quantity of distribution shall be determined on the basis of the commercially feasible shipping quantity of each category of agricultural products.

A final user who has obtained the redistributed quotas may entrust a trade enterprise of any kind with the right of trade to import the products. A final user with the right of trade may also import the products directly.

(IV) Distribution of Import Tariff Quotas of Agricultural Products in 2015

1. Distribution of import tariff quotas of grains

The promulgation of quota quantities, application conditions and distribution principles of import tariff quotas of grains in 2015 is subject to the No.22 bulletin of 2014 issued by the SDRC of PRC. On Jan. 5th, 2015, the SDRC promulgated the information of enterprises applying for import tariff quotas of grains in 2015.

(1) Quota quantities

The import tariff quota quantities of grains in 2015 are: 9.636 million tons of wheat, accounting for 10% of non-state-run trade; 7.2 million tons of corn, accounting for 40% of non-state-run trade; 5.32 million tons of rice (including: 2.66 million tons of long-grain rice, and 2.66 million tons of medium and short-grain rice), accounting for 50% of non-state-run trade.

(2) Application conditions

The basic conditions of applicants for import tariff quotas of grains in 2015 are: have registered in the Administration for Industry and Commerce prior to Oct. 1st, 2014; be with good financial condition, tax records and integrity status; strictly implement the statistical system of grain circulation, and be subject to the provisions of minimum and maximum stock quantities for grain operators; during the period of 2012-2014, be with no violation records in the aspects such as customs, industry & commerce, tax affairs, foreign exchange, inspection & quarantine, grain circulation and environmental protection, no credit record of non-performing loan, and no actions violating the *Interim Measures for the Administration of Import Tariff Quotas of Agricultural Products*.

On the premise of such conditions above, applicants for import tariff quota of wheat must also meet one of the following conditions:

State-run trade enterprises;

Enterprises with actual import performance (excluding agent import) in 2014;

Flour manufacturing enterprises with wheat consumption more than 100,000 tons in 2013 or 2014;

Food manufacturing enterprises with flour consumption more than 50,000 tons in 2013 or 2014;

Enterprises engaged in the processing trade and using wheat or flour as the raw material, without actual import performance in 2014 but with the import-export operation right and the certificate of production capacity on processing trade provided by local commerce authorities.

Applicants for import tariff quota of corn and wheat must also meet one of the following conditions:

State-run trade enterprises;

Enterprises with actual import performance (excluding agent import) in 2014;

Feed manufacturing enterprises with corn consumption more than 50,000 tons in 2013 or 2014;

Other manufacturing enterprises with corn consumption more than 150,000 tons in 2013 or 2014;

Enterprises engaged in the processing trade and using corn as the raw material, without actual import performance in 2014 but with the import-export operation right and the certificate of production capacity on processing trade provided by local

commerce authorities.

Applicants for import tariff quota of rice (the long-grain rice and the medium and short-grain rice need respective application) must also meet one of the following conditions:

State-run trade enterprises;

Enterprises with actual import performance (excluding agent import) in 2014;

Grain enterprises with the qualification of grain wholesale and retail, reaching the amount of rice sales more than RMB 100 million in 2013 or 2014;

Food manufacturing enterprises with rice consumption more than 50,000 tons in 2013 or 2014;

Enterprises engaged in the processing trade and using rice as the raw material, without actual import performance in 2014 but with the import-export operation right and the certificate of production capacity on processing trade provided by local commerce authorities.

The group enterprises with multiple processing plants must separately apply for and use the import quotas in the name of each independent processing plant. The trading enterprises applying for the import tariff quota of rice can choose to submit the application in the name of group headquarters or subordinate enterprises, but the group headquarters and subordinate enterprises shall not submit the application in the meantime.

(3) Quota usage

The above import tariff quotas of grains must be used by applicants themselves, and the imported goods shall be processed and operated by the enterprises, among which the imported wheat and corn shall be processed for use by the plants; and the imported rice shall be organized for sales in the name of the enterprises.

2. Distribution of import tariff quota of cotton

The promulgation of quantity, application conditions and distribution principles of import tariff quota of cotton in 2015 is subject to the No.22 bulletin of 2014 issued by the SDRC of PRC.

(1) Quota quantities

The import tariff quota quantity of cotton in 2015 is 894,000 tons, among which the state-run trade accounts for 33%.

(2) Application conditions

The basic conditions of applicants for import tariff quota of cotton in 2015 are: have registered in the Administration for Industry and Commerce prior to Oct. 1st, 2014; be with good financial condition, tax records and integrity status; during the period of 2012-2014, be with no violation records in the aspects such as customs, industry & commerce, tax affairs, foreign exchange, inspection & quarantine and environmental protection, and with no credit record of non-performing loan; have performed social responsibilities related to business; Without actions violating the *Interim Measures for the Administration of Import Tariff Quotas of Agricultural Products*.

On the premise of such conditions above, applicants for import tariff quota of cotton must also meet one of the following conditions:

State-run trade enterprises;

Enterprises with actual import performance (excluding agent import) in 2014;

Cotton-spinning enterprises with spinning equipment more than 50,000 spindles.

3. Distribution of import tariff quota of sugar

The preparation of the quantity and application conditions of import tariff quota of sugar in 2015 is subject to the *Detailed Rules and Regulations on Application and Distribution of Import Tariff Quota of Sugar in 2015* (No.66 Decree of the MOFCOM [2014]).

(1) Total quantity of tariff quota

The total quantity of import tariff quota of sugar in 2015 is 1.945 million tons, among which the state-run trade accounts for 70%.

(2) Types of applicant enterprises

State-run trade enterprises;

Central enterprises with the function of state reserve;

Enterprises with actual import performance holding the tariff quota of sugar in 2014 (hereinafter referred to as applicants with actual performance);

Sugar enterprises with daily processing capacity more than (equal to) 600 tons, registered capital more than (equal to) RMB 10 million, and annual sales of sugar more than (equal to) RMB 450 million;

Enterprises engaged in the processing trade, using sugar as the raw material.

(3) Basic conditions of applicants

Have registered in the Administration for Industry and Commerce prior to Oct. 1st, 2014, and conducted the publicity of annual reports;

During the period of 2012-2014, be with no violation records in the aspects of customs, foreign exchange, industry & commerce, tax affairs, quality inspection, social security, environmental protection, self-discipline, etc.;

Without actions violating the *Interim Measures for the Administration of Import Tariff Quotas of Agricultural Products* and the *Detailed Rules and Regulations on Application and Distribution of Import Tariff Quota of Sugar in 2014*.

(4) Application materials

Application report for import tariff quotas of agricultural products;

Application form for import tariff quotas of agricultural products;

Copy of business license for enterprise as a legal person (duplicate);

Copies of the 2014 *Certificates of Import Tariff Quotas of Agricultural Products* of sugar and the customs declaration for importation endorsed and signed by customs;

The tax clearance certificate of 2013 proofing the enterprise has paid tax by law.

The applicants with actual performance shall provide the first four items of materials above; the applicants without actual performance shall provide the first, second, third and fifth items of materials. If an applicant without actual performance was constructed and put into operation after 2009, it shall also provide the competent department with an approval document of feasibility study report of the construction project (or an approval document of project proposals) and the completion acceptance report.

(5) Distribution of quota

If the total quantity of import tariff quota can satisfy applications of qualified applicants, the distribution of quota shall be accordant with the application quantities of applicants;

If the total quantity of import tariff quota cannot satisfy applications of qualified applicants, applicants with actual performance can get the preferential quota, and the distribution of quota shall be accordant with actual import performance, production capacity and sales of applicants in the last year, as well as other relevant commercial standards.

IV. List of China's Non-agricultural Imports from Indonesia

(I) Selection Method

The non-agricultural products, such as industrial products, account for the major share of China-ASEAN trade. With the further promotion of China-ASEAN free trade area, the tariff level of products like industrial products has been significantly reduced, with relatively high degree of trade & investment liberalization and facilitation. In accordance with the ordering of sum of non-agricultural products that China imported from Indonesia in 2014, regarding the HS 2-bit code as a basis of classification, the non-agricultural products ranking at the top are selected in the first 10 Chapters; then regarding the HS 4-bit code as a basis of classification, the non-agricultural products ranking in the top 3 of the first 10 Chapters above are selected respectively.

(II) List of Main Non-agricultural Imports

The list of main non-agricultural products China imported from Indonesia in 2014 is formed according to UNCOMTRADE after the top 30 kinds of products are selected on the classification bases of HS 2-bit and HS 4-bit codes. In order to facilitate Indonesia suppliers' export of relevant products to China, the supervision conditions of main non-agricultural products imported are listed in appendixes (See details in Appendix I and III).

List of China's Main Non-agricultural Imports from Indonesia

Number	HS Code	Article Description
1	27 01	Coal briquettes, ovoids and similar solid fuels manufactured from coal
2	27 02	Lignite , whether or not agglomerated, excluding jet
3	27 11	Petroleum gases and other gaseous hydrocarbons
4	26 04	Nickel ores and concentrates
5	26 03	Copper ores and concentrates
6	26 06	Aluminum ores and concentrate
7	38 23	Industrial monocarboxylic fatty acids acid; oils from refining; industrial fatty alcohols
8	38 08	Insecticides, rodenticides, fungicides, herbicides, anti-sprouting products and plantgrowth regulators, disinfectants and similar products , put up in forms or packings for retail sale or as

		preparations or articles (for example, sulphur-treated bands, wicks and candles, and fly-papers)
9	47 03	Chemical wood pulp, soda or sulphate, other than dissolving grades
10	47 02	Chemical wood pulp, dissolving grades
11	47 06	Pulps of fibres derived from recovered (waste and scrap) paper or paperboard or of other fibrous cellulosic material
12	85. 32	Electrical capacitors, fixed, variable or adjustable (preset)
13	85. 36	Electrical apparatus for switching or protecting electrical circuits, or for making connections to or in electrical circuits (for example, switches, relays , fuses , surge suppressors , plugs, sockets, lamp-holders, and other connectors junction boxes) , for a voltage not exceeding 1000 volts; connectors for optical fibres, optical fibre bundles or cables
14	85. 04	Electrical transformers, static converters (for example, rectifiers) and inductors
15	44 21	Other articles of wood
16	44 07	Wood sawn or chipped lengthwise, sliced or peeled , whether or not planed, sanded or finger-jointed, of a thickness exceeding 6 mm
17	44 01	Fuel wood, in logs, in billets, in twigs, in faggots or in similar forms wood in chips or particles sawdust and wood waste and scrap, whether or not agglomerated in logs, briquettes, pellets or similar forms
18	40 05	Compounded rubber, unvulcanized, in primary forms or in plates, sheets or strip
19	40 02	Synthetic rubber and factice derived from oils, in primary forms or in plates, sheets or strip mixtures of any products of heading No. 40 01 with any product of this heading, in primary forms or in plates, sheets or strip
20	29 02	Cyclic hydrocarbons
21	29 05	Acyclic alcohols and their hatogenated, sulphonated, nitrated or nitrosated derivatives
22	29 17	Polycarboxylic acids, their anhydrides, halides, peroxides and peroxyacids their hatogenated, sulphonated, nitrated or nitrosated derivatives
23	84. 43	Printing machinery used for printing, cylinders and other printing components of heading84.42 other printers Copying machines and facsimile machines , whether or not combined Part and accessories there of
24	84. 71	Automatic data processing machines and units thereof magnetic or optical readers, machines for transcribing data onto data media in coded form and machines for processing such data, not elsewhere specified or included

25	84. 82	Ball or roller bearings
----	--------	-------------------------

V . Process Management of China’s Imports from INDONESIA

According to relevant laws and regulations of the State Administration for Quality Supervision and Inspection and Quarantine (AQSIQ) and the General Administration of Customs, the products that China imports from Indonesia shall be subject to inspection and quarantine, and these imported goods can enter into the domestic market only after passing the supervision of customs.

(I) Inspection & Quarantine

During the entry inspection declaration, the inspection form for entry goods shall be filled in, and relevant documents such as the contracts, invoices and bills of lading shall be provided according to the *Provisions of Entry-Exit Inspection and Quarantine Declaration*. In addition, relevant documents shall be provided according to requirements in case of the following conditions.

1. Relevant certificates shall be provided for goods subject to safety quality licensing and sanitary registration, or required to be approved and reviewed.
2. For goods requiring quality inspection, foreign quality certificates or quality guarantees, product use instructions as well as relevant standards and technical data shall be provided; for goods delivered with samples, the reference samples must be attached; for goods settled accounts per grade or conditioned weight, an application of weight survey shall be submitted in the meantime.
3. During the entry inspection declaration for waste, the *Approval Certificate for Imported Waste* signed and issued by national environmental protection departments, the certificate for pre-shipment inspection signed and issued by authorized inspection agencies, etc. shall be provided.
4. For goods applying for damage survey, relevant documents which can prove the situation of damage, such as the damage report of tallying, business records of railways, air traffic accident reports or marine accident reports, shall also be provided.
5. For goods applying for weight (quantity) survey, the detailed list of weight, the

list of tallying, etc. shall be also provided.

6. For goods through acceptance of receiving and using departments or tested by other units, the acceptance report or test results, the detailed list of weight, etc. shall be attached with the goods.

7. International travelers entering in the country shall fill in the quarantine declaration form on entry.

8. For animals and plants as well as corresponding products entering in the country, the trade contracts, invoices and certificates of origins shall be provided, and meanwhile, the official quarantine certificate of exporting countries or regions also must be provided; For those required to transact the approval procedures of entry quarantine, the entry quarantine permits for animals and plants shall also be provided.

9. During the inspection declaration of transited animals and plants as well as corresponding products, waybills and quarantine certificates officially provided by the exporting countries or regions shall be held; when transiting animals, transit permits for animals and plants signed and issued by the State Administration of Inspection and Quarantine shall also be submitted.

10. During the entry inspection declaration for transportation and containers, quarantine certificates shall be provided, and health conditions of relevant personnel shall be declared.

11. Entry passengers and traffic personnel carrying companion animals shall provide the quarantine certificate for entry animals and the vaccination certificate.

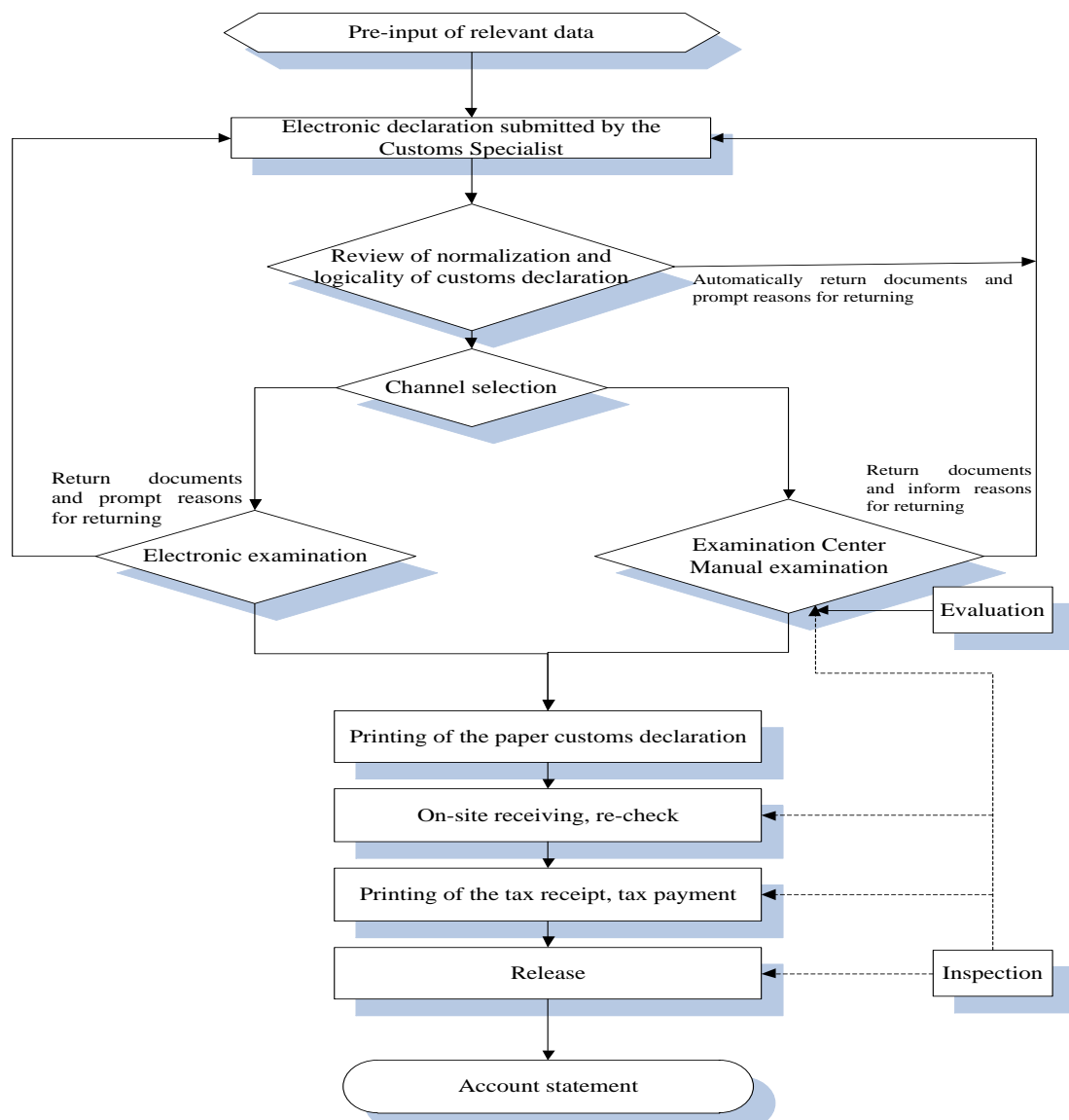
12. For articles banned from entry but need entry due to special requirements such as scientific research, the certificate of special permission signed and issued by the State Administration of Inspection and Quarantine must be provided.

13. For the entry of special articles, relevant approval documents or specified documents shall be provided.

(II) Customs Clearance

The procedure of customs clearance for China's imported products is composed of five basic links, including declaration, inspection, taxation, release and clearance. Declaration refers to the behaviors that a consignee or his agent of imported goods submits the verification certificate to customs and applies for the transaction of customs affairs. Inspection refers to the checks conducted by customs according to laws to the

imported goods declared by the declarant, so as to confirm the conformity of documents, certificates and goods, check if there is any violation of laws and if the entry is legal, and prepare conditions for the next customs clearance procedure. Taxation means that customs charge the tariff for imported goods and the taxes for imported links according to relevant national policies, laws and regulations, including tariff classification, application of the tariff rate and import linkage tax rate, approval and determination of the duty-paying value, calculation and payment of taxes. Release is the last link of on-site operations of port customs supervision. Clearance means that customs implement inspections on the goods requiring follow-up management after the port release within a specified period, and deal with the goods requiring supplementary certificates and payment for overdue taxes till all of customs supervision procedures are fully completed. The flow chart of China's product import is as follow:



For the customs clearance of agricultural products subject to import quotas management, the *Certificates of Import Tariff Quotas of Agricultural Products* shall be submitted according to relevant provisions of the *Interim Measures for the Administration of Import Tariff Quotas of Agricultural Products* (No. 4 Decree of the Ministry of Commerce and the State Development Planning Commission [2003]).

(III) Cooperation between customs and inspection & quarantine departments

According to the *Notification on the Comprehensive Promotion of Cooperation between Customs and Inspection & Quarantine Departments Issued by the General Administration of Customs and the State Administration for Quality Supervision and Inspection and Quarantine* (No.161 Decree of the General Administration of Customs and AQSIQ [2014]), since Aug. 1st, 2014, the “3 Ones” of cooperation between customs and inspection & quarantine departments has been comprehensively promoted to all directly competent customs and inspection & quarantine departments, all sites of customs clearance, and all goods and articles requiring customs declaration and inspection declaration pursuant to the laws, so as to achieve the maximum utilization of facilitation measures provided by customs and inspection & quarantine departments to benefit enterprises.

The “3 Ones” of cooperation between customs and inspection & quarantine departments refers to the “one-off declaration, one-off inspection and one-off release”. The “one-off declaration” refers to “one-off input and respective declarations”, which means that an enterprise only needs to input data for once, and the data will be respectively sent to customs and inspection & quarantine departments; the “one-off inspection” refers to “one-off unpacking that customs and inspection & quarantine departments jointly implement check/inspection & quarantine pursuant to the laws”, which means that both parties of customs and inspection & quarantine departments can jointly implement check/inspection & quarantine to the same batch of goods as required according to their different responsibilities and pursuant to the laws; the “one-off release” refers to “networking check and release of customs and inspection & quarantine departments”, which means that customs and inspection & quarantine

departments respectively send the check and release information for goods arriving at ports, and the enterprise can transact procedures for taking delivery of goods by the check and release information of customs and inspection & quarantine departments.

Appendix I

List of Supervision Requirements of Customs

License or Official Document Codes	License or Official Document Names
1	Import Licence of the People's Republic of China
2	Import License for Dual-use Items and Technologies
3	Export License for Dual-use Items and Technologies
4	Export Licence of the People's Republic of China
5	Temporary Textiles Export Licence of the People's Republic of China
6	Prohibited Import of Used Mechanical and Electric Products
7	Automatic Import License of the People's Republic of China
8	Export Forbidden Items
9	Import Forbidden Items
A	Certificate of Inspection for Goods Inward
B	Certificate of Inspection for Goods Outward
D	Certificate of Inspection for Goods Inward(Used for Rough Diamonds)
E	Export Permit for Endangered Wild Animals
F	Import Permit for Endangered Wild Animals
G	Export License for Dual-use Items and Technologies(Directionality)
I	Psychotropic Drug Import and Export License
J	The export license or the people's Bank of China import approval of gold products
O	Automatic Import License (Used and New Mechanical and Electrical Products)
P	Certificate of Approval for Import of Wastes
Q	Drug Import Customs Clearance
S	Certificate for the Import and Export of Pesticides
T	License of Transporting Cash in Foreign Currency Inward and Outward
W	Import Authorization for Narcotic Drugs
X	Clearance Notification for Environmental Management on Import/Export of Toxic Chemicals
Z	Certificate of of Approval for the Import of Audio and Video Products or Claimed Programs
e	Certificate of Cotton Import Tariff Quota at Out-Quota Preferential Duty Rate
s	Certificate of the Use Identification of Goods under ITA Tax
t	Import Tariff Quota Certificate
v	Automatic Import License of the People's Republic of China (Processing Trade)
x	Export Licence of the People's Republic of China (Processing Trade)
y	Export Licence of the People's Republic of China (Small Amount of Border Trade)

Appendix II

Supervision Requirements of Customs of Main Agricultural Imports

HS Code	Supervision Requirements	Article Description
15 11		Palm oil and its fractions, whether or not refined, but not chemically modified
1511 1000	7AB	-Crude oil
		-Other
1511 9010	7AB	-Palm olein(melting point 19 °C- 24°C)
1511 9020		-Palm stearin (melting point 44°C - 56°C)
1511 9020 暂 01	7AB	Solid palm stearin (melting point 50°C- 56°C, not chemically modified)
1511 9020 90	AB	Palm Stearin (melting point 44°C- 50°C, not chemically modified)
1511 9090	7AB	-Other
		-Coconut (copra) oil and its fractions
1513 1100	AB	--Crude oil
1513 1900	AB	-Other
		-Palm kernel or babassu oil and fractions thereof-
1513 2100	AB	--Crude oil
1513 2900	AB	-Other
15 17		Margarine; edible mixtures or preparations of animal or vegetable fats or oils or of fractions of different fats or oils of this Chapter, other than edible fats or oils or their fractions of heading No.15 16
1517 1000	AB	-Margarine , excluding liquid margarine
		-other
1517 9010		-Shortening
1517 9010 01	AB	Shortening made of animal grease (other than edible fats or oils or their fractions of heading No. 1516)
1517 9010 90	AB	Shortening made of plant oil(other than edible fats or oils or their fractions of heading No. 1516)
1517 9090		-Other
1517 9090 01	AB	edible mixtures or preparations of animal fats or oil or of fractions (Other than edible fats or oil or their fractions of heading No.15 16)
1517 9090 90	AB	edible mixtures or preparations of vegetable fats or oil or of fractions (Other than edible fats or oil or their fractions of heading No.15 16)

12 12		Locust beans, seaweeds and other algae, sugar beet and sugar cane, fresh, chilled, frozen or dried, whether or not ground fruit stones and kernels and other vegetable products (including unroasted chicory roots of the variety <i>Cichorium intybus sativum</i>) of a kind used primarily for human consumption, not elsewhere specified or included
		-Seaweeds and Other algae
		-Fit for human consumption
1212 2110	AB	-sea tangle
1212 2120	8A	-Black moss
		-Pinnatifidia
1212 2131	AB	-dried
1212 2132	AB	-Fresh
1212 2139	AB	-Other
		-Laver
1212 2141	AB	- Dried
1212 2142	AB	-Fresh
1212 2149	AB	-Other
		-Eucheuma
1212 2161	AB	- Dried
1212 2169	AB	-Other
		----Garcilaria
1212 2171	AB	-dried
1212 2179	AB	-Other
1212 2190 暂	AB	-Other
1212 2900 暂	AB	-Other
		-Other
1212 9100	AB	-sugar beet
1212 9200	AB	--Locust beans
1212 9300	AB	-sugar cane
1212 9400	AB	--Chicory roots
		-Other
		-Apricot, peach (including nectarine) or plum stones and kernels
1212 9911	QAB	-Bitter Apricot kernels
1212 9912	AB	----Sweet Apricot kernels
1212 9919	AB	-Other
		-Other
1212 9993	AB	-Pumpkin Seeds
1212 9994	AB	-Lotus Seeds (semen Nelumbinis)
1212 9996	ABEF	----leaf of steviol
1212 9999		-Other
1212 9999 10	ABFE	Other endangered vegetable products (including unroasted

		chicory roots of the variety <i>Cichorium intybus sativum</i>) of a kind used primarily for human consumption
1212 9999 90	AB	Other fruit stones and kernels and vegetable products (including unroasted chicory roots of the variety <i>Cichorium intybus sativum</i>) of a kind used primarily for human consumption
03 06		Crustaceans, whether in shell or not, live, fresh, chilled, frozen, dried, salted or in brine smoked crustaceans, whether or not cooked before or during the smoking process crustaceans, in shell, cooked by steaming or by boiling in water, whether or not chilled, frozen, dried, salted or in brine flours, meals and pellets of crustaceans, fit for human consumption
0306 1100	AB	- Reef shrimp and shrimp (<i>Palinurus</i> , lobster genus, Rock lobster genus)
0306 1200	AB	-Ao lobster(<i>Ao</i> lobster genus)
		--crabs
0306 1410	AB	-Swimming crab
0306 1490	AB	-Other
0306 1500	AB	-Norway Lobsters (<i>Nehrops Norvegicus</i>)
		--Cold-water shrimp and prawns (<i>pandalus</i> , spp., <i>Crangon crangon</i>)
		---Cold-water shrimp
0306 1611	AB	-Shelled
0306 1612	AB	-Other , <i>pandanus borealis</i>
0306 1619	AB	-Other
		---Cold-water prawns
0306 1621	AB	-Shelled
0306 1629	AB	-Other
		-Other shrimps and prawns
		-shrimps
0306 1711	AB	-Shelled
0306 1719	AB	-Other
		-prawns
0306 1721	AB	-Shelled
0306 1729	AB	-Other
		-Other including flours, meals and pellets of crustaceans, fit for human consumption
		-Freshwater crawfish
0306 1911	AB	-Shelled
0306 1919	AB	-Other
0306 1990	AB	-Other
		-not Frozen

		-Reef shrimp and shrimp (Palinurus, Lobster genus, Rock lobster genus)
0306 2110	AB	-for cultivation
0306 2190	AB	-Other
		-Ao lobster(Ao lobster genus)
0306 2210	AB	-for cultivation
0306 2290	AB	-Other
		--Crabs
0306 2410	AB	-for cultivation
		-Other
0306 2491	AB	-Freshwater crabs live
0306 2492	AB	-Swimming crab
0306 2499	AB	-Other
		-Norway Lobsters (Nephrops Norvegicus)
0306 2510	AB	-for cultivation
0306 2590	AB	-Other
		--Cold-water shrimp and prawns (pandalus spp., Crangon crangon)
0306 2610	AB	-for cultivation
0306 2620	AB	-prawns , Fresh or chilled
0306 2690		-Other
0306 2690 01	AB	Cold-water shrimp , fresh or chilled
0306 2690 90	AB	Cold-water prawns and shrimp, whether in shell or not live dried salted or in brine (including smoked, whether in shell or not, whether or not cooked before or during the smoking process in shell, cooked by steaming or by boiling in water)
		-Other shrimps and prawns
0306 2710	AB	-for cultivation
0306 2720	AB	-prawns , Fresh or chilled
0306 2790		-Other
0306 2790 01	AB	Other shrimp , fresh or chilled
0306 2790 90	AB	Other prawns and shrimp, whether in shell or not ,live, dried ,salted or in brine(including smoked ,whether or not cooked before or during the smoking process in shell, cooked by steaming or by boiling in water)
		-Other including flours, meals and pellets of crustaceans, fit for human consumption
0306 2910	AB	-for cultivation
0306 2990	AB	-Other
19 05		Bread , pastry , cakes, biscuits and other bakers' wares, whether or not containing cocoa communion wafers , empty cachets of a kind suitable for pharmaceutical use, seating wafers, rice paper and similar products

1905 1000	AB	-Crisp bread
1905 2000	AB	-Gingerbread and the like
		-Sweet biscuits; waffles and wafers
1905 3100	AB	-Sweet biscuits
1905 3200	AB	-Waffles and wafers
1905 4000	AB	-Rusks, toasted bread and similar toasted products
1905 9000	AB	-Other
15 16		Animal or vegetable fats and oil and fractions thereof, partly or wholly hydrogenated, inter-esterified, reesterified or elaidinized, whether or not refined, but not further prepared
1516 1000	AB	-Animal Fats and oils and fractions thereof
1516 2000	AB	-Vegetable fats and oils and fractions thereof
15 20		Glycerol, crude glycerol waters and glycerol lyes
1520 0000	AB	Glycerol, crude glycerol waters and glycerol lyes
23 06		Oil-Cake and other solid residues, whether or not ground or in the form of pellets, resulting from the extraction of vegetable fats or oils , other than those of heading No. 23 04 or 23 05
2306 1000	AB	-of Cotton Seeds
2306 2000	AB	-of Linseed
2306 3000	AB	-of sunflower Seeds
		-of rape or colza Seeds
2306 4100	AB	-of Low erucic acid rape or colza Seeds
2306 4900	AB	-Other
2306 5000	AB	-of Coconut or copra
2306 6000		-of Palm nuts or kernels
2306 6000 10	ABEF	Endangered oil-cake and Other solid residues of palm nuts or dernel (other than those of heading No. 23 04 or 23 05)
2306 6000 90	AB	Other oil-cake and other solid residues of palm nuts or dernel(other than chose of heading No. 23 04 or 23 05)
2306 9000	AB	-Other
03 07		molluscs, whether in shell or not, live, fresh, chilled, frozen, dried, salted or in brine smoked molluscs, whether in shell or not, whether or not cooked before or during the smoking process; flours , meals and pellets of mollusks , fit for human consumption
		-Oysters
		-Live, fresh or chilled

0307 1110	AB	-for cultivation
0307 1190	AB	-Other
0307 1900	AB	-Other
		-Scallops, including queen scallops, of the genera Pecten, Chlamys or Placopecten
		-Live, fresh or chilled
0307 2110		-for cultivation
0307 2110 10	ABE	Pearloyster (Pinctada maxima) , for cultivation
0307 2110 90	AB	Other scallops(including queen scallops) for cultivation)
0307 2190		-Other
0307 2190 10	ABE	Other pearloyster (Pinctada maxima) , live, fresh or chilled
0307 2190 90	AB	Other scallops (including queen scallops, excluding for cultivation) live , fresh or chilled
0307 2900		-Other
0307 2900 10	ABE	Other pearloyster (pinctada maxima) , frozen , dried , salted or in brine (including smoked , in whether in shell or not whether or not cooked before or during the smoking process)
0307 2900 90	AB	Other scallops (including queen scallops) , frozen, dried, salted, or in brine (including smoked, in whether in shell or not, whether or not cooked before or during the smoking process)
		Mussels (Mytilus spp., Perna spp.)
		-Live ,Fresh or chilled
0307 3110	AB	-for cultivation
0307 3190		-Other
0307 3190 01	AB	Mussels , fresh or chilled
0307 3190 90	AB	Other mussels live
0307 3900		-Other
0307 3900 01	AB	Mussels , frozen
0307 3900 90	AB	Other mussels, dried, salted or in brine (including smoked , in whether in shell or not; whether or not cooked before or during the smoking process)
		-Cuttle fish (Sepia officinalis , Rossia macrosoma, Sepiola spp.) and squid (Ommastrephes spp. , Loligo spp., nototodarus spp. , Sepioteuthis spp.)
		-Live, fresh or chilled
0307 4110	AB	-for cultivation
0307 4190	AB	-Other
0307 4900	AB	-Other
		-Octopus (Octopus spp.)
0307 5100	AB	-Live, fresh or chilled
0307 5900	AB	-Other

		-Snails, Other than sea Snails
0307 6010		-for cultivation
0307 6010 10	ABFE	Endangered snails, other than sea snails , for cultivation
0307 6010 90	AB	Other snails, other than sea snails , for cultivation
0307 6090		-Other
0307 6090 10	ABFE	Other endangered snails , other than sea snails
0307 6090 90	AB	Other snails other than sea snails , live , fresh , chilled, frozen dried salted or in brine (including smoked, in whether in shell or not, whether or not cooked before or during the smoking process)
		-Clam ,cockle and ark shell (families arcidae, arcticidae, cardiidae, donacidae, hiatellidae, mactridae, mesodesmaticlae, myidae, semelidae, solecurtidae, solenidae, tridacnidae, veneridae)
		-Live, fresh or chilled
0307 7110		-for cultivation
0307 7110 10	ABEF	Tridacna stone, live, fresh or chilled , for cultivation
0307 7110 90	AB	Clam, cockle and ark shell (arcidae, arcticidae, cardiidae, donacidae, hiatellidae, mactridae, mesodesmatidae, myidae, mesodesmatidae, solecurtidae, solenidae, tridacnidae, veneridae), live, fresh or chilled, for cultivation
		-Other
0307 7191	AB	----Clam
0307 7199		-Other
0307 7199 10	ABEF	Tridacna stone, live, fresh or chilled
0307 7199 90	AB	Clam, cockle and ark shell (arcidae, arcticidae, cardiidae, donacidae, hiatellidae, mactridae, mesodesmatidae, myidae, mesodesmatidae, solecurtidae, solenidae, tridacnidae, veneridae) , live , fresh or chilled
		-Other
0307 7910	AB	---Ceam
0307 7990	AB	-Other
0307 7990 10	ABEF	Tridacna stone , frozen, dried, salted (including smoked , in whether in shell or not whether or not cooked before or during the smoking process)
0307 7990 90	AB	Clam, cockle and ark shell (arcidae, arcticidae, cardiidea, donacidae, hiatellidae, mactridae, mesoclesmaticlae, myidae, mesodesmatidae, solecurtidae, solenidae, tridacnidae, veneridae) , frozen dried salted (including smoked, in whether in shell or not, whether or not cooked before or during the smoking process)
		-Abatone (ormer)
		-Live, fresh or chilled

0307 8110	AB	-for cultivation
0307 8190	AB	-Other
0307 8900	AB	-Other
		-other, including flours, meals and pellets, fit for human consumption
		-Live fresh or chilled
0307 9110		-for cultivation
0307 9110 10	AFEB	Endangered molluscs, live, fresh, chilled, for cultivation
0307 9110 90	AB	Other molluscs, live, fresh, chilled, for cultivation
0307 9190		-Other
0307 9190 10	ABEF	Other endangered molluscs , live, fresh, chilled
0307 9190 90	AB	Other molluscs, live, fresh , chilled
0307 9900		-Other
0307 9900 10	ABEF	Other endangered molluscs , frozen , dried , salted or in brine including flours , meals and pellets of mollusks, fit for human consumption, excluding crustaceans,(including smoked , whether in shell or not; whether or not cooked before or during the smoking process)
0307 9900 90	AB	Other molluscs , frozen, dried, salted or in brine , including flours, meals and pellets of mollusks, fit for human consumption, excluding crustaceans, (including smoked, whether in shell or not whether or not cooked before or during the smoking process)
08 01		Coconuts, Brazil nuts and cashew- nuts, fresh or dried, whether or not shelled or peeled
		-Coconuts
0801 1100	AB	-Desiccated
0801 1200	AB	-in the inner shell(endocarp)
		-Other
0801 1910	AB	-Seedlings
0801 1990	AB	-Other
		-Brazil nuts
0801 2100	AB	--in shell
0801 2200	AB	-Shelled
		-Cashew nuts
0801 3100	AB	--in shell
0801 3200	AB	-Shelled
03 03		Fish, frozen, excluding fish fillets and other fish meat of heading No. 03 04
		-Salmonidae , excluding Livers and roes
0303 1100	AB	-Sockeye salmon (red salmon) (Oncorhynchus nerka)
0303 1200	AB	-Other Pacific salmon (Oncorhynchus gorbuscha , Oncorhynchus keta, Oncorhynchus tshawytscha,

		Oncorhynchus kisutch, Oncorhynchus masou and Oncorhynchus rhodurus)
0303 1300	AB	-Atlantic salmon (<i>Salmo salar</i>) and Danuhe salmon (Hucho hucho)
0303 1400	AB	-Trout (<i>Salmo trutta</i> , <i>Oncorhynchus mykiss</i> , <i>Oncorhynchus clarki</i> , <i>Oncorhynchus aguabonita</i> , <i>Oncorhynchus gilae</i> , <i>Oncorhynchus apache</i> and <i>Oncorhynchus chrysogaster</i>)
0303 1900		-Other
0303 1900 10	ABE	Chuan-shan taimen (hucho taimen) (excluding liver and roes) frozen
0303 1900 20	ABE	Qinting lenok (<i>brachymystax lenok</i>) (excluding liver and roes) frozen
0303 1900 90	AB	Other salmonidae (excluding liver and roes) frozen (excluding livers and roes)
0303 2300	AB	-Tilapia (<i>Oreochromis</i> spp.)
0303 2400	AB	--Catfish (<i>Pangasius</i> spp., <i>Silurus</i> spp., <i>Clarias</i> spp.)
0303 2500	AB	--Carp (<i>Cyprinus carpio</i> , <i>Carassius carassius</i> , <i>Ctenopharyngodon idellus</i> , <i>Hypophthalmichthys</i> spp. , <i>Cirrhinus</i> spp., <i>Mylopharyngodon piceus</i>)
0303 2600		-Eel (<i>Anguilla</i> spp.)
0303 2600 10	ABE	Marbled eels , frozen (excluding livers and roes)
0303 2600 20	ABEF	European eels frozen (excluding livers and roes)
0303 2600 90	AB	Other eels (<i>anguilla</i> spp.) , frozen (excluding livers and roes)
0303 2900		-Other
0303 2900 01	AB	Nile perch (<i>Lates niloticus</i>) , frozen (excluding livers and roes)
0303 2900 90	AB	Snakeheads (<i>Channa</i> spp.) , frozen (excluding livers and roes)
		-Flatfish (<i>Pleuroneidae</i> , <i>Bothidae</i> , <i>Cynoglossidae</i> , <i>Soleidae</i> , <i>Scophthalmidae</i> and <i>Ciilaridae</i>) excluding livers and roes
		-Halibut (<i>Reinhardtius hippoglossoides</i> , <i>Hippoglossus hippoglossus</i> , <i>Hippoglossus stenolepis</i>)
0303 3110 暂	AB	---Greenland Halibut
0303 3190	AB	-Other
0303 3200 暂	AB	-Plaice (<i>Pleuronectes platessa</i>)
0303 3300	AB	-Sole (<i>Solea</i> spp.)
0303 3400	AB	-Turbot (<i>Psetta maxima</i>)
0303 3900	AB	-Other
		-Tunas (of the genus <i>thunnus</i>) (tuna genus) , skipjack or stripe-bellied bonito or belteol bonito (oceanic bonito) excluding livers and roes
0303 4100	AB	-Albacore or longfinned tunas (<i>Thunnus alalunga</i>)
0303 4200	AB	-Yellowfin tunas (<i>Thunnus albacares</i>)

0303 4300	AB	-Skipjack or belted bonito
0303 4400	ABU	-Bigeye tunas(<i>Thunnus obesus</i>)
		-Atlantic and pacific bluefin tunas (<i>Thunnus thynnus</i> , <i>Thunnus orientalis</i>)
0303 4510	ABU	-Atlantic bluefin tunas
0303 4520	AB	-pacific bluefin tunas
0303 4600	AB	-Southern bluefin tunas (<i>Thunnus maccoyii</i>)
0303 4900	AB	-Other
0303 5100 暫	AB	-Herrings (<i>Clupea harengus</i> , <i>Clupea pallosii</i>)
0303 5300	AB	-sardines (<i>Sardina pilchardus</i> , <i>Sardintyps</i> spp.) ,sardinella (<i>Sardinella</i> spp.) , brisling or sprats (<i>Sprattus sprattus</i>)
0303 5400	AB	-Mackerel (<i>Scomber scombrus</i> , <i>Scoruber australasicus</i> , <i>Scomber japonicus</i>)
0303 5500	AB	-jack and horse mackerel (<i>Trachurus</i> spp.)
0303 5600	AB	--Cobia (<i>Rachycentron canadum</i>)
0303 5700	ABU	-Swordfish (<i>Xiphias gladius</i>)
		-Fish of the families bregmacerotidae, eulichthyidae, Gadidae, macrouridae, melanonidae, merluccidae,moridae and muraenolepididae, excluding livers and roes
0303 6300 暫	AB	--Cod (<i>Gadus morhua</i> , <i>Gadus ogac</i> , <i>Gadus macrocephalus</i>)
0303 6400	AB	-Haddock (<i>Melanogrammus aeglefinus</i>)
0303 6500	AB	--Coalfish(<i>Pollachius virens</i>)
0303 6600	AB	-Hake (<i>Merluccius</i> spp., <i>Urophycis</i> spp.)
0303 6700	AB	-Alaska Pollack (<i>Theragra chalcogramma</i>)
0303 6800	AB	-Blue whittings (<i>Micromesistius poutassou</i> , <i>Micromesistius australis</i>)
0303 6900	AB	-Other
		-other fish , excluding livers and roes
0303 8100		-Dogfish and Other sharks
0303 8100 10	ABEF	Whale shark (<i>Rhincodon</i>) , man-eating shark (<i>Carcharodon</i>), basking shark (<i>Cetorhinus</i>) (excluding livers and roes) , frozen
0303 8100 90	AB	Other dogfish and other sharks (excluding livers and roes) , frozen
0303 8200	AB	-Rays and skates(<i>Rajidae</i>)
0303 8300	ABU	-Toothfish (<i>Dissostichus</i> spp.)
0303 8400	AB	-Seabass (<i>Dicentrarchus</i> spp.)
		-Other
0303 8910	AB	-Scabber fish (<i>Trichurus</i>)
0303 8920	AB	-Yellow croaker(<i>Pseudosciaena</i>)
0303 8930	AB	-Tilapia
0303 8990		-Other
0303 8990 01	AB	Other perch , frozen (excluding livers and roes)

0303 8990 10	ABFE	Other endangered fish, frozen (excluding livers and roes)
0303 8990 90	AB	Other fish, frozen (excluding livers and roes)
0303 9000		-Livers and roes
0303 9000 10	ABEF	Livers and roes of endangered fish , frozen
0303 9000 90	AB	Other livers and roes, frozen
18 04		Cocoa butter, fat and oil
1804 0000		Cocoa butter, fat and oil
1804 0000 10	AB	Cocoa fat
1804 0000 90	AB	Cocoa oil
07 14		Manioc, arrowroot, salep, Jerusalem artichokes, sweet potatoes and similar roots and tubers with high starch or inulin content, fresh, chilled, frozen or dried, whether or not sliced or in the form
		-Manioc (cassava)
0714 1010	AB	-Fresh
0714 1020	AB	-dried
0714 1030	AB	---Chilled or frozen
		-Sweet potatoes
		-Fresh
0714 2011	AB	-for cultivation
0714 2019	AB	-Other
0714 2020	AB	-dried
0714 2030	AB	---Chilled or frozen
0714 3000	AB	-Yams (dioscoreae spp.)
0714 4000		-Taros (colocasia spp.)
0714 4000 01	AB	Fresh, chilled taros (colocasia spp.) (whether or not sliced or made granute; taros are also called yunai belong to Spath hyttum of the Araceae vegetables, classified into ground taros and river taros)
0714 4000 90	AB	Frozen, dried taros (colocasia spp.) (whether or not sliced or made granule; taros are also called yunai belong to Spath hyttum of the Araceae vegetables, classified into ground taros and river taros)
0714 5000	AB	-Yautia (Xanthosoma spp.)
		-Other
0714 9010	AB	-water chestnut
		---Lotus (Nelumbo nucifera) rootstock
0714 9021	AB	-for cultivation
0714 9029	AB	-Other
0714 9090		-Other
0714 9090 10	ABFE	Tubers of orchid family, fresh, chilled, frozen or dried
0714 9090 91	ABFE	Other endangered similar roots and tubers with high starch or

		inulin content (including sago pith, whether or not sliced or made gramule , fresh , chilled , frozen ,dried)
0714 9090 99	AB	Other similar roots and tubers with high starch or inulin content(including sago pith whether or not sliced or in the form of pellets fresh , chilled , frozen , dried)
21 06		Food preparations not elsewhere specified or included
2106 1000	AB	-Protein concentrates and textured Protein substances
		-Other
2106 9010	AB	-Beverage bases
2106 9020	AB	---Compound alcoholic preparations of a kind used for the manufacture of beverages
2106 9030		-royal jelly, put up as tonic essences
2106 9030 10	ABFE	Royal jelly, put up as tonic essences containing composition of endangered plants
2106 9030 90	AB	Other royal jelly, put up as tonic essences
2106 9040	AB	---Coconut juice
2106 9050		-Seal oil capsules
2106 9050 10	ABEF	Endangered seal oil capsules
2106 9050 90	AB	Other seal oil capsules
2106 9090		-Other
2106 9090 暂01	AB	Milk protein partial hydrolysate formula, milk protein hydrolysis amino acid formula special depth formula, infant milk powder
2106 9090 10	ABEF	Other food preparations containing composition of endangered plants, not elsewhere specified or included
2106 9090 90	AB	Other food preparations, not elsewhere specified or included
03 01		Live fish
		-Ornamental fish
0301 1100		-Freshwater fish
0301 1100 10	BEF	Ornamental endangered freshwater fish
0301 1100 90	AB	Ornamental other freshwater fish
0301 1900		-Other
0301 1900 10	BFE	Ornamental endangered not freshwater fish
0301 1900 90	AB	Ornamental other not freshwater fish
		-Other live fish
		Trout (<i>Salmo trutta</i> , <i>Oncorhynchus mykiss</i> , <i>Oncorhynchus clarkii</i> , <i>Oncorhynchus aguabonita</i> , <i>Oncorhynchus gilae</i> , <i>Oncorhynchus apache</i> and <i>Oncorhynchus chrysogaster</i>)
0301 9110	AB	-Fry
0301 9190	AB	-Other

		-Eels (<i>Anguilla</i> spp.)
0301 9210		-Fry
0301 9210 10	ABE	Fry of marbled eels (<i>Anguilla marmorata</i>)
0301 9210 20	BEF	Fry european eels
0301 9210 90	AB	Other fry of eels (<i>Anguilla marmorata</i>)
0301 9290		-Other
0301 9290 10	ABE	Marbled eels (<i>Anguilla marmorata</i>)
0301 9290 20	BEF	European eels
0301 9290 90	AB	Other live eels (<i>Anguilla marmorata</i>)
		-- <i>Cyprinus carpio</i> , <i>Carassius Carassius</i> , <i>Ctenopharyng-odon idellus</i> , <i>Hypophthalmichthys</i> spp. , <i>Cirrhinus</i> spp. , <i>Mylopharyngodon piceus</i>
0301 9310	AB	-Fry
0301 9390	AB	-Other
		-Atlantic and pacific bluefin tunas (<i>Thunnus thynnus</i> , <i>Thunnus orientalis</i>)
0301 9410	AB	-Fry
		-Other
0301 9491	AB	-Atlantic bluefin tunas
0301 9492	AB	-Pacific bluefin tunas
		-Southern bluefin tunas (<i>thunnus maccoyii</i>)
0301 9510	AB	-Fry
0301 9590	AB	-Other
		-Other
		-Fry
0301 9911	AB	-of perches
0301 9912	ABFE	-of sturgeon
0301 9919		-Other
0301 9919 10	ABFE	Other endangered fry
0301 9919 90	AB	Other fry
		-Other
0301 9991	AB	-Tilapia
0301 9992	AB	-Puffer fish
0301 9993		-Other cyprinidae fish
0301 9993 10	ABFE	Other endangered live carp
0301 9993 90	AB	Other live carp(<i>Cyprinus carpio</i> , <i>Carassius carassius</i> , <i>Ctenopharyngodon idellus</i> , <i>Hypophthalmichthys</i> spp., <i>Cirrhinus</i> spp. , <i>Mylopharyngodon piceus</i>)
0301 9999		-Other
0301 9999 10	ABFE	Other endangered live fish
0301 9999 90	AB	Other live fish
18 03		Cocoa paste, whether or not defatted
1803 1000	AB	-not defatted

1803 2000	AB	-Wholly or partly defatted
23 02		Bran , sharps and other residues, whether or not in the form of pellets, derived from the sifting, milting or other working of cereals or of leguminous plants
2302 1000	AB	-Of maize (corn)
2302 3000	AB	-of wheat
2302 4000	AB	-of other cereals
2302 5000	AB	-of leguminous plants
18 05		Cocoa powder, not containing added sugar or other sweetening matter
1805 0000	AB	Cocoa powder, not containing added sugar or other
09 01		Coffee, whether or not roasted or decaffeinated coffee husks and skins coffee substitutes containing coffee in any proportion
		-Coffee , not roasted
0901 1100	AB	--not decaffeinated
0901 1200	AB	-Decaffeinated
		-Coffee , roasted
0901 2100	AB	-not decaffeinated
0901 2200	AB	-Decaffeinated
		-Other
0901 9010	AB	---Coffee husks and skins
0901 9020	AB	---Coffee substitutes containing coffee
08 03		Bananas, including plantains , fresh or dried
0803 1000	AB	-Plantains
0803 9000	AB	-Other
21 01		Extracts, essences and concentrates, of coffee, tea or mate and preparations with a basis of these products or with a basis of coffee, tea or mate roasted chicory and other roasted coffee substitutes, and extracts, essences and concentrates thereof
		-Extracts, essences and concentrates of coffee, and preparations with a basis of these extracts, essences or concentrates or with a basis of coffee
2101 1100	AB	-Extracts, essences and concentrates
2101 1200	AB	-Preparations with a basis of extracts, essences or concentrates or with a basis of coffee
2101 2000	AB	-Extracts, essences and concentrates, of tea or mate, and preparations with a basis of these extracts, essences or concentrates or with a basis of tea or mate

2101 3000	AB	-Roasted Chicory and Other roasted Coffee substitutes, and extracts, essences and concentrates thereof
14 04		Vegetable products not elsewhere specified or included
1404 2000	AB	-Cotton linters
		-Other
1404 9010	AB	-Raw Vegetable materials of a kind used primarily in dyeing or tanning
1404 9090	AB	-Other
09 04		Pepper of the genus Piper dried or crushed or ground fruits of the genus Capsicum or of the genus Pimenta
		-Pepper
0904 1100		-Neither crushed Nor ground
0904 1100 10	QAB	Piper longum
0904 1100 90	AB	Pepper of the genus Piper, neither crushed Nor ground(other than piper longum)
0904 1200	AB	--crushed or ground
		- Chili
0904 2100	AB	-Dried neither crushed Nor ground
0904 2200	AB	--crushed or ground
14 01		Vegetable materials of a kind used primarily for plaiting (for example, bamboos, rattans, reeds, rushes, osier, raffia, cleaned, bleached or dyed cereal straw, and lime bark)
1401 1000		-Bamboos
1401 1000 10	ABE	Acidosasa chinensis (Raphia vinifera)
1401 1000 90	AB	Other bamboos
1401 2000		-Rattans
1401 2000 10	ABFE	Endangered rattans
1401 2000 90	AB	Other rattans
		-Other
1401 9010	AB	---Cereal straw (Other than wheat straw)
1401 9020	AB	-Reeds
		-Rushes
1401 9031	AB4xy	-mat rush
1401 9039	AB	-Other
1401 9090	AB	-Other
24 01		Unmanufactured tobacco; tobacco refuse
		-Tobacco, not stemmed/stripped
2401 1010	7AB	-Flue-cured
2401 1090	7AB	-Other
		-Tobacco, partly or wholly stemmed/stripped
2401 2010	7AB	-Flue-cured

2401 2090	7AB	-Other
2401 3000	AB7	-Tobacco refuse
52 02		Cotton waste (including yarn waste and garnetted stock)
5202 1000	AP	-Yarn Waste (including thread Waste)
		-Other
5202 9100	ABP	--Garnetted stock
5202 9900	ABP	-Other
09 02		Tea, whether or not flavoured
		-Green tea (not fermented) in immediate packings of a content not exceeding 3kg
0902 1010	AB	-Flavoured
0902 1090	AB	-Other
		-Other green tea (not fermented)
0902 2010	AB	-Flavoured
0902 2090	AB	-Other
		-Black tea (fermented) and partly fermented tea, in immediate packings of a content not exceeding 3 kg
0902 3010	AB	-Oolong tea
0902 3020	AB	-Puer tea
0902 3090	AB	-Other
		-Other black tea (fermented) and other partly fermented tea
0902 4010	AB	-Oolong tea
0902 4020	AB	-Pu-er tea
0902 4090	AB	-Other
33 01		Essential oils (terpeneless or not) ,including concretes and absolutes resinoids; extracted oleoresins concentrates of essential oils in fats, in fixed oils, in waxes or the like, obtained by enfleurage or maceration; terpenic byproducts of the deterpenation of essential oils; aqueous distillates and aqueous solutions of essential oils
		-Essential oils of Citrus fruit
3301 1200	A	-of Orange
3301 1300	A	-of Lemon
		-Other
3301 1910	A	-of Lime
3301 1990	A	-Other
		-Essential oils Other than those of Citrus fruit
3301 2400	A	-of peppermint (Mentha piperita)
3301 2500 暫	A	-of Other mints
		-Other
3301 2910	ABE	-Of camphor
3301 2920	A	-Of citronella
3301 2930	A	-of aniseed

3301 2940	A	-of cassia
3301 2950	A	-of litsea cubeba
3301 2960	AB	-of eucalyptus
		-Other
3301 2991	A	-of geranium
3301 2999		-Other
3301 2999 暂 10	23A	Oil of sassafras
3301 2999 91	AFE	Other endangered essential(other than citrus fruit) (including concretes and absolutes)
3301 2999 99	A	Other essential oils other than those of citrus fruit (including concretes and absolutes)
		-Resinoids
3301 3010 暂		-Balsam of irises
3301 3090		-Other
3301 3090 10	FE	Other resinoids of endangered vegetable
3301 3090 90		Other resinoids
		-Other
3301 9010		-Extracted oleoresins
3301 9010 10	FE	Extracted oleoresins of endangered vegetable
3301 9010 90		Other extracted oleoresins
3301 9020		-Terpenic byproducts of the deterpenation of essential oils of citrus fruit
3301 9090		-Other
13 01		Lac natural gums, resins, gum-resins and oleoresins (for example, balsams)
1301 2000	AB	-Gum Arabic
		-Other
1301 9010	AB	---Gum tragacanth
1301 9020	BQ	-Olihanum, myrrh and dragon's flood
1301 9030	AB	-Asafoetida
1301 9040		-Pine -resin
1301 9040 10	ABE	Pine-resin of endangered plants of pine family
1301 9040 90	AB	Other pine-resin
1301 9090		-Other
1301 9090 10	ABFE	Resin of daemonorops draco, resin of euphorbia, resin of lignum vitae
1301 9090 20	ABW	Charas, churrus
1301 9090 91	ABFE	Other natural gums, resins, gum-resins and oleoresins (for example, balsams) of endangered plants
1301 9090 99	AB	Other natural gums, resins, gum-resins and oleoresins (for example , balsams)

Appendix III

Supervision Requirements of Customs of Main Non-agricultural Imports

HS Code	Supervision Requirements	Article Description
27 01		Coal briquettes, ovoids and similar solid fuels manufactured from coal
		-Coal, whether or not pulverized, but not agglomerated
2701 1100 暂		-Anthracite
2701 1100 暂 10	47Axy	Anthracite(whether or not pulverized, but not agglomerated)
2701 1100 暂 90	7A	Anthracite filter medium
		-Bituminous Coal
2701 1210 暂	47Axy	---Coking Coal
2701 1290 暂	47Axy	-Other
2701 1900 暂	47Axy	-Other Coal
2701 2000 暂		-Briquettes, ovoids and similar solid fuels manufactured from coal
27 02		Lignite , whether or not agglomerated, excluding jet
2702 1000	A4xy	-Lignite, whether or not pulverized, but not agglomerated
2702 2000	A	-Agglomerated Lignite
27 11		Petroleum gases and other gaseous hydrocarbons
		-Liquefied
2711 1100	4ABy	-natural gas
2711 1200 暂	AB	-Propane
		-Butanes
2711 1310		---Liquid or liquefied-gas fuels in containers of a kind used for filling or refilling cigarette or similar lighters and of a capacity exceeding 300cm ³
2711 1390 暂		-Other
2711 1400		-Ethylene , propylene, butylene and butadiene
2711 1400 10	AB	Liquefied ethylene ,
2711 1400 90		Liquefied propylene , butylene and butadiene
		-Other
2711 1910		-Liquid or liquefied-gas fuels in containers of a kind used for filling or refilling cigarette or similar lighters and of a capacity exceeding 300cm ³
2711 1990		-Other
2711 1990 10	AB	Other liquefied petroleum gases
2711 1990 90		Other liquefied gaseous hydrocar

		-In gaseous state
2711 2100	AB	-natural gas
2711 2900		-Other
2711 2900 10	AB	Other petroleum gases , in gaseous state
2711 2900 90		Other gaseous hydrocar , in gaseous state
26 04		Nickel ores and concentrates
2604 0000		Nickel ores and concentrates
2604 0000 01		Nickel ores and concentrates(Part gold value part)
2604 0000 90		Nickel ores and concentrates (Part of Non - gold Value)
26 03		Copper ores and concentrates
2603 0000		Copper ores and concentrates
2603 0000 10	7A	Copper ores and concentrates (part of gold value)
2603 0000 90	7A	Copper ores and concentrates (pan of Non-gold value)
26 06		Aluminium ores and concentrate
2606 0000	47xy	Aluminium ores and concentrate
38 23		Industrial monocarboxylic fatty acids; acid oils from refining; industrial fatty alcohols
		-Industrial monocarboxylic fatty acids; acid oils from refining
3823 1100		-Stearic Acid
3823 1200 ^暫	AB	-Oleic acid
3823 1300		-Tall oil fatty acids
3823 1900		-Other
3823 1900 ^暫 01		Acid oils of plant(acid oils from refining)
3823 1900 90		Other industrial monocarboxylic fatty acids, acid oils (acid oils from refining)
3823 7000 ^暫		~ Industrial fatty alcohols
38 08		Insecticides, rodenticides, fungicides, herbicides, anti-sprouting products and plantgrowth regulators , disinfectants and similar products, put up in forms or packings for retail sale or as preparations or articles (for example, sulphur-treated bands, wicks and candles, and fly-papers)
		-(Goods specified in subheading note I to this Chapter
3808 5010		-put up for retail sale
3808 5010 10	s	Including a kind of the substances specified of substances specified in subheading note I to Chapter 38 , put up for retail sale
3808 5010 90	x	Including all kind of the substances specified of substances specified in subheading note I to Chapter 38, put up for retail sale

3808 5090		-Other
3808 5090 10	s	Including a kind of the substances specified of substances specified in subheading note I to Chapter 38 ,not put up for retail sale
3808 5090 90	X	Including all kind of the substances specified of substances specified in subheading note I to Chapter 38,not put up for retail sale
		-Other
		-- insecticides
		-put up for retail sale
3808 9111	AS	-Mosquito smudges
3808 9112	AS	-Biotic insecticide
3808 9119	AS	-Other
3808 9190	AS	-Other
		-Fungicides
3808 9210	s	-put up for retail sale
3808 9290		-Other
3808 9290 10		Medical fungicides, not in forms or packing for retail sale
3808 9290 21	s	Paper bags for fruit protetion, agricultural fungicides scaked
3808 9290 29	s	Other agricultural fungicides medicine not in forms or packing for retail sale
3808 9290 90		Non - agricultural fungicides medicine and Non - medical fungicides, not in forms packing for retail sale -Herbicides anti-sprouting products and plant growth regulators
		-Herbicides
3808 9311	AS	-put up for retail sale
3808 9319		-Other
3808 9319 10	AS	Paraquat liquor, not put up for retail sale
3808 9319 90	AS	Other herbicides Patent medicine, not put up for retail sale
		-Other
3808 9391	s	-Put up for retail sale
3808 9399	s	-Other
3808 9400		- Disinfectants
3808 9400 10		Medical disinfectants
3808 9400 20	R	Disinfectant of glutaraldehyde, disinfectant of deciquan solution, for veterinary purposes (including disinfectant and antiseptics for compound coal tar acid solution)
3808 9400 90		Non-medical disinfectants
		-Other
3808 9910	s	-put up for retail sale

3808 9990	s	-Other
47 03		Chemical wood pulp, soda or sulphate, other than dissolving grades
		-Unbleached
4703 1100		--Coniferous
4703 1900		-Non-Coniferous
		-Semi-bleached or bleached
4703 2100		--Coniferous
4703 2100 01		For the production of viscose chemical fiber (not containing cellulose acetate) of bleached softwood pulp of wood or kraft pulp (including semi bleached dissolving except) (content of alpha cellulose pulp viscosity is greater than or equal to 3.7dl/g, and < 6.4dl/g, and \geq 350ml/g, and <700ml/g, (R18 sulfur acid salt) \geq 88% and <95.5%, ash \leq 0.15%)
4703 2100 90		Other chemical wood pulp , soda or sulhate (including semi - bleached or bleached, other than dissolving grades)
4703 2900		--Non-Coniferous
47 02		Chemical wood pulp, dissolving grades
4702 0000		Chemical wood pulp, dissolving grades
4702 0000 01		For the production of viscose chemical fiber (not containing cellulose acetate) of chemical wood pulp, dissolving (content of alpha cellulose pulp viscosity is greater than or equal to 3.7dl/g, and <64dl/g, and \geq 350ml/g, and (<700ml/g, R18, sulfate) \geq 88%, and <95.5% , or the content of alpha cellulose (R18, sulfite) \geq 87%, and <94%, ash \leq 0.15%)
4702 0000 90		other chemical wood pulp , dissolving grades
47 06		Pulps of fibres derived from recovered (waste and scrap) paper or paperboard or of other fibrous cellulosic material
4706 1000		-Cotton linters pulp
4706 1000 01		For the production of viscose chemical fiber (not containing cellulose acetate) of cotton linter pulp (content of alpha cellulose pulp viscosity is greater than or equal to 3.7dl/g, and < 6 .4dl/g, and \geq 350ml/g, and (<700ml/g, R18, sulfate) \geq 88%, and <95. 5%, or the content of alpha cellulose (R18, sulfurous acid salt) \geq 87%, and < 94%, ash \leq 015%)
4706 1000 90		Other cotton linters pulp
4706 2000		-Pulps of fibres derived from recovered (waste and scrap) paper or paperboard
4706 3000		-Other, of bamboo

4706 3000 01		-For the production of viscose chemical fiber (not containing cellulose acetate) of cellulose pulp (including mechanical pulp, chemical pulp, semi chemical pulp) (content of alpha cellulose pulp viscosity is greater than or equal to 3.7dl/g, and <6.4dl/g, and $\geq 350\text{ml/g}$, and (<700ml/g, R18, sulfate) $\geq 88\%$, and < 95. 5% , or alpha the content of cellulose (R18, sulfite) $\geq 87\%$, and <94% , ash $\leq 0. 15\%$)
4706 3000 90		Other fibrous cellulosic material(including mechanical wood pulp , chemical pulp , semi - chemical)
		-Other
4706 9100		-mechanical
4706 9200		--chemical
4706 9300		-Pulp obtained by a combination of mechanical and chemical pulping process
85. 32		Electrical capacitors, fixed, variable or adjustable (preset)
8532. 1000		-Fixed capacitors designed for use in 50/60 Hz circuits and having a reactive power handling capacity of not less than 0. 5kVar (power capacitors)
		-Other fixed capacitors
		-Tantalum
8532. 2110		-Laminate.
8532. 2190		-Other
		-Aluminium electrolytic
8532. 2210		-Laminate
8532. 2290		-Other
8532. 2300		--Ceramic dielectric , single layer
		--Ceramic. dielectric . multilayer
8532. 2410		-Laminate
8532. 2490		-Other
		-dielectric of paper or plastics
8532. 2510		-Laminate
8532. 2590		-Other
8532. 2900		-Other
8532. 3000		-Variable or adjustable (pre-set) capacitors
		-Parts
8532. 9010		-Of the capacitors of subheading No.8532. 1000
8532. 9090		-Other

85. 36		Electrical apparatus for switching or protecting electrical circuits, or for making connections to or in electrical circuits (for example, switches, relays , fuses , surge suppressors , plugs , sockets , lamp-holders, and other connectors junction boxes) , for a voltage not exceeding 1000 volts; connectors for optical fibres, optical fibre bundles or cables
8536. 1000	A	-Fuses
8536. 2000	A	-Automatic circuit breakers
8536. 3000	A	-Other apparatus for protecting electrical circuits
		-Relays
		-For a voltage not exceeding 60 V
8536. 4110		-For a voltage not exceeding 36V
8536. 4190	A	-Other
8536. 4900	A	-Other
8536. 5000	A	-Other switches
		-Lamp-holders , plugs and sockets
8536. 6100		-Lamp-holders
8536. 6900		-Other
8536. 7000		-Connectors for optical fibres, optical fibre bundles or cables
		-Other apparatus
		---Connector
8536. 9011	A	-Working voltage not exceeding 36 volts
8536. 9019	A	-Other
8536. 9090	A	-Other
85. 04		Electrical transformers, static converters(for example, rectifiers) and inductors
		-Ballasts for discharge lamps or tubes
8504. 1010		-electronic ballats
8504. 1090		-Other
		-liquid dielectric transformers
8504. 2100		-having a power handling capacity not exceeding 650KVA
8504. 2200		-Having a power handling capacity exceeding 650KVA but not exceeding 10 MVA
		-Having a power handling capacity exceeding 10 MVA
		-having a power handling capacity exceeding 10MVA but less than 400MVA

8504. 2311		-having a power handling capacity exceeding 10MVA but less than 220MVA
8504. 2312		-having a power handling capacity exceeding 220MVA but less than 330MVA
8504. 2313		-having a power handling capacity exceeding 330MVA but less than 400MVA
		-Having a power handling capacity of 400 MVA or more
8504. 2321		-having a power handling capacity exceeding 400MVA but less than 500MVA
8504. 2329		-Other
		-Other transformers
		-having a power handling capacity not exceeding 1 KVA
8504. 3110		-Mutual inductor
8504. 3190		-Other
		-having a power handling capacity exceeding 1KVA but not exceeding 16KVA
8504. 3210		-Mutual inductor
8504. 3290		-Other
		-Having a power handling capacity exceeding 16 KVA but not exceeding 500 KVA
8504. 3310		-Mutual inductor
8504. 3390		-Other
		-Having a power handling capacity exceeding 500 KVA
8504. 3410		-Mutual inductor
8504. 3490		-Other
		-Static Converters
		---Voltage-stabilized suppliers
8504. 4013	A	-Of the machines of heading No. 84. 71
8504. 4014 ^智		-Other DC voltage-stabilized suppliers, of a power of less than 1 KW and an accuracy of not better than 0. 0001
8504. 4015		-Other AC voltage-stabilized suppliers, of a power of less than 10 KW and an accuracy of not better than 0. 001
8504. 4019		-Other
8504. 4019 10	3	Ion source magnetic power suppliers of isotopes electromagnetic separators (high-power, DC type)

8504. 4019 20	3	High-power DC power suppliers (capable of generating I00V, 500A current uninterrupted in 8 hours, stability better than 0. 1%)
8504. 4019 30	3	High-voltage DC power suppliers (capable of generating 20KV, 1A current uninterrupted in 8 hours, stability better than 0. 2%)
8504. 4019 40	3	Ion source high-voltage power suppliers of isotopies electromagnetic separators
8504. 4019 90		Other voltage-stabilized suppliers
8504. 4020		-Uninterrupted power suppliers
8504. 4030		---Inverter
8504. 4030 ^暂 01		Inverter module for electric vehicle. Power density 8KW/L
8504. 4030 10	3	Inverter of sensitive items control (power \geq 40w , frequency = 600hz - 2000hz. harmonic distortion <10%)
8504. 4030 90		Other inverter
		-Other
8504. 4091 ^暂		-Semiconductor modules with a converting function
8504. 4091 ^暂 01		Semi-conductor modules with a converting function (for automatic data processing machines and units thereof and telecommunication apparatus)
8504. 4091 ^暂 09		other semiconductor modules with a converting function
8504. 4099		-Other
8504. 4099 01		Static converters(for automatic data processing machines and units thereof and telecommunication apparatus)
8504. 4099 02		Printed circuit assemblies for products falling within the ITA (including external assemblies, for example , cards in accordance with PCMCIA)
8504. 4099 ^暂 03		Traction converter for highspeed electric locomotive (for electric locomotives with the speed of 200KM/h)
8504. 4099 ^暂 04		Frequency control devices in pressing machine for auto pressing line
8504.4099 ^暂 05		Motor controller for electric vehicle
8504. 4099 30	3	Frequency converters, specially, for stators of heading 85030090. 10
8504. 4099 40	3	Frequency converters (power \geq 40W, frequency = 600Hz - 2000Hz, harmonic distortion < 10%)
8504. 4099 50	3	Power suppliers (for vacuum or atmosphere-controlled induction furnace , rated output power \geq 5 KW)

8504. 4099 60	3	Module - type electric pulse generator (output electric current > I00A in 15ms and greater in temperature span when sealed in dustproof cover)
8504. 4099 90		Other static converters, not elsewhere specified or included
8504. 5000		-Other inductors
		-Parts
		-Of transformers
8504. 9011		-Of the transformers of subheading No. 8504. 2321 , 8504. 2329
8504. 9019		-Other
8504. 9020		-of Voltage-stabilized suppliers and Uninterrupted power suppliers
8504. 9090		-Other
44 21		Other articles of wood
4421 1000		-Clothes hangers
4421 1000 10	FEAB	Clothes hangers of Ramin wood
4421 1000 20	FEAB	Clothes hangers of endangered wood
4421 1000 90	AB	Clothes hangers of wood
		-Other
4421 9010		-Spools, cops, bobbins, sewing thread reels and the like
4421 9010 10	FEAB	Spools cops, bobbins, sewing thread reels and the like, of Ramin wood
4421 9010 20	FEAB	Spools, cops, bobbins, sewing thread reels and the like , of endangered wood
4421 9010 90	AB	Spools, cops, bobbins, sewing thread reels and the like , of wood
		---Circle sticks, cirde bars, popside sticks, spatula and the like
4421 9021		-of wood
4421 9021 10	FEAB	Round toobtpick, round stick, ice fruit stick tongue-pressing plate and similar one-time of Ramin wood
4421 9021 20	FEAB	Round toobtpick, round stick, ice fruit stick tongue-pressing plate and similar one-time of endangered wood
4421 9021 90	AB	Round toobtpick, round stick, ice fruit stick tongue-pressing plate and similar one-time of other wood
4421 9022		-of Bamboo

4421 9022 10	ABE	round toothpick , round stick ice fruit stick , tongue - pressing plate and similar one - off products of acidosa chinensis
4421 9022 90	AB	round toothpick, round stick ice fruit stick, tongue -pressing plate and similar one - off products of bamboo
4421 9090		-Other
4421 9090 10	FEAB	Articles of Ramin wood, not elsewhere specified or included
4421 9090 20	FEAB	Articles of endangered wood not elsewhere specified or included
4421 9090 90	AB	Articles of wood not elsewhere specified or included
44 07		Wood sawn or chipped lengthwise, sliced or peeled, whether or not planed, sanded or finger-jointed, of a thickness exceeding 6 mm
		-Coniferous
4407 1010		-Korean Pine and Mongolian scotch Pine
4407 1010 11	ABEF	Korean pine wood sawn or chipped lengthwise, sliced or peeled, end-jointed, thickness > 6mm
4407 1010 19	AB	Mongolian scotch pine wood sawn or chipped lengthwise , sliced or peeled , end-jointed , thickness > 6mm
4407 1010 91	4ABEFxy	Wood sawn or chipped lengthwise, sliced or peeled, of Korean pine , No. 1 end - jointed , thickness > 6mm
4407 1010 99	4ABxy	Wood sawn or chipped lengthwise , sliced or peeled, of Mongolian scotch pine, not end - jointed, thickness > 6mm
4407 1020		-White pine (spruce and fir)
4407 1020 11	ABEF	Wood sawn or chipped lengthwise, sliced or peeled , of endangered white pine (spruce and fir) , end - jointed , thickness > 6mm
4407 1020 19	AB	Wood sawn or chipped lengthwise, sliced or peeled, of other white pine (spruce and fir) , end - jointed, thickness > 6mm
4407 1020 91	4ABEFxy	Wood sawn or chipped lengthwise , sliced or peeled, of endangered white pine (spruce and fir) not end - jointed , thickness > 6mm

4407 1020 99	4ABxy	Wood sawn or chipped lengthwise, sliced or peeled, of other white pine (spruce and fir) , not end - jointed , thickness > 6mm
4407 1030		-Radiata Pine
4407 1030 10	AB	Wood sawn or chipped lengthwise, sliced or peeled , of radiata pine, end-jointed, thickness > 6mm
4407 1030 90	4ABxy	Wood sawn or chipped lengthwise , sliced or peeled , of radiata pine, not end-jointed, thickness > 6mm
4407 1040		-Douglas fir
4407 1040 10	AB	Wood sawn or chipped lengthwise, sliced or peeled, of douglas fir (Pseudotsuga menziesii) , end-jointed , thickness > 6mm
4407 1040 90	4ABxy	Wood sawn or chipped lengthwise, sliced or peeled, of douglas fir (Pseudotsuga menziesii) not end-jointed , thickness > 6mm
4407 1090		-Other
4407 1090 11	FEAB	other endangered coniferous wood sawn or chipped lengthwise, sliced or peeled, end-jointed, thickness >6mm
4407 1090 19	AB	Other coniferous wood sawn or chipped lengthwise, sliced or peeled, end-jointed, thickness > 6mm
4407 1090 91	EAB40	Other endangered coniferous wood sawn or chipped lengthwise, sliced or peeled, not end-jointed, thickness > 6mm
4407 1090 99	AB4xy	other coniferous wood sawn or chipped lengthwise, sliced or peeled not end-jointed, thickness > 6mm -Of tropical wood specified in Subheading note 2 to this chapter
4407 2100		-Mahogany (Swietenia spp.)
4407 2100 10	FEAB	Wood sawn or chipped lengthwise , sliced or peeled, of mashogany (swietenia spp.),end-jointed, thickness > 6mm
4407 2100 90	ABEFxy	Wood sawn or chipped lengthwise , sliced or peeled, of mashogany (swietenia spp.) , not - end-jointed, thickness > 6mm
4407 2200		--Virola , Imbuia and Balsa

4407 2200 10	AB	Wood sawn or chipped lengthwise sliced or peeled, of virola, imbuia and balsa, end-jointed, thickness >6mm
4407 2200 90	4ABxy	Wood sawn or chipped lengthwise, sliced or peeled, of virola, imbuia and balsa, not end-jointed, thickness >6mm
4407 2500		-Dark red Meranti, Light red Meranti and Merand Bakau
4407 2500 10	AB	Wood sawn or chipped lengthwise , sliced or peeled , of Dark Red Meranti, Light Red Meranti and Meranti Bakau, end-jointed , thickness > 6mm
4407 2500 90	y4xAB	Wood sawn or chipped lengthwise , sliced or peeled, of Dark Red Meranti, Light Red Meranti and Meranti Bakau, not end-jointed , thickness > 6mm
4407 2600		-White Lauan White Meranti, White Seraya, Yellow Meranti and Alan
4407 2600 10	AB	Wood sawn or chipped lengthwise, sliced or peeled, of White Lauan, White Meranti , White Seraya , Yellow Meranti and Alan, end-jointed, thickness >6mm
4407 2600 90	y4xAB	Wood sawn or chipped lengthwise, sliced or peeled , of White Lauan, White Meranti, White Seraya, Yellow Meranti and Alan, not end-jointed, thickness > 6mm
4407 2700		-Sapelli
4407 2700 10	AB	Wood sawn or chipped lengthwise, sliced or peeled , of sapelli , end-jointed , thickness > 6mm
4407 2700 90	4ABxy	Wood sawn or chipped lengthwise, sliced or peeled, of sapelli , not end-jointed, thickness > 6mm
4407 2800		---Iroko
4407 2800 10	AB	Wood sawn or chipped lengthwise, sliced or peeled, of Iroko, end - jointed , thickness > 6mm
4407 2800 90	4ABxy	Wood sawn or chipped lengthwise, sliced or peeled, of Iroko, not end - jointed , thickness > 6mm
		-Other
4407 2910		-Teak
4407 2910 10	AB	Wood sawn or chipped lengthwise, sliced or peeled, of teak , end-jointed, thickness > 6mm

4407 2910 90	y4xAB	Wood sawn or chipped lengthwise, sliced or peeled, of teak , not end-jointed , thickness > 6mm
4407 2920		-Acajou
4407 2920 10	AB	Wood sawn or chipped lengthwise , sliced or peeled , of acajou , end-jointed , thickness > 6mm
4407 2920 90	AB	Wood sawn or chipped lengthwise , sliced or peeled , of acajou , not end-jointed , thickness > 6mm
4407 2930		-Merban
4407 2930 10	AB	Wood sawn or chipped lengthwise, sliced or peeled , of merban, end-jointed, thickness > 6mm
4407 2930 90	AB	Wood sawn or chipped lengthwise, sliced or peeled , of merban, not end-jointed thickness > 6mm
4407 2990		-Other
4407 2990 11	FEAB	Wood sawn or chipped lengthwise, sliced or peeled , of Ramin wood, end-jointed , thickness > 6mm
4407 2990 12	FEAB	Other endangered tropical wood, not elsewhere specified or included in subheading note 2 to this Chapter, sawn or chipped lengthwise, sliced or peeled , end-jointed , thickness > 6mm
4407 2990 19	AB	Wood sawn or chipped lengthwise, sliced or peeled, of other tropical wood not elsewhere specified or included in subheading note 2 to this Chapter, end-jointed, thickness > 6mm
4407 2990 91	y4xAFEB	Other tropical endangered wood, not elsewhere specified or included in subheading note 2 to this Chapter, sawn or chipped lengthwise, sliced or peeled, not end-jointed, thickness > 6mm
4407 2990 99	y4xAB	Other tropical wood not elsewhere specified or included in subheading note 2 to this Chapter, sawn or chipped lengthwise, sliced or peeled, not end-jointed, thickness > 6mm
		-Other
4407 9100		-of oak (Quercus spp.)
4407 9100 10	AB	Wood sawn or chipped lengthwise , sliced or peeled , of oak (Quercus spp.) , end-jointed, thickness > 6mm
4407 9100 90	4xAB	Wood sawn or chipped lengthwise , sliced or peeled, of oak (Quercus spp.) , not end-jointed, thickness > 6mm
4407 9200		-Of beech (Fagus spp.)

4407 9200 10	ABE	Wood sawn or chipped lengthwise , sliced or peeled , of beech (Fagus spp.) , end-jointed, thickness > 6mm
4407 9200 90	ABExy	Wood sawn or chipped lengthwise , sliced or peeled , of beech (Fagus spp.) , not end-jointed, thickness > 6mm
4407 9300		-of maple (Acer spp.)
4407 9300 10	AB	Wood sawn or chipped lengthwise , sliced or peeled, of maple , end-jointed, thickness > 6mm
4407 9300 90	4ABxy	Wood sawn or chipped lengthwise, sliced or peeled, of maple , not end - jointed , thickness > 6mm
4407 9400		-of cherry (Prunus spp.)
4407 9400 10	AB	Wood sawn or chipped lengthwise , sliced or peeled, of cherry , end-jointed, thickness > 6mm
4407 9400 90	ABxy	Wood sawn or chipped lengthwise, sliced or peeled, of cherry , not end - jointed , thickness > 6mm
4407 9500		-of Ash (Fraxinus, spp.)
4407 9500 10	AB	Wood sawn or chipped lengthwise , sliced or peeled, of ash , end-jointed, thickness > 6mm
4407 9500 90	ABxy	Wood sawn or chipped lengthwise, sliced or peeled, of ash, not end –jointed, thickness > 6mm
		-Other
4407 9910		-of Camphor-wood, nanmu or rosewood
4407 9910 10	AFEB	Wood sawn or chipped lengthwise , sliced or peeled , of camphor-wood, nanmu or rosewood, end-jointed, thickness > 6mm
4407 9910 90	4xAFEB	Wood sawn or chipped lengthwise , sliced or peeled , of camphor-wood nanmu or rosewood not end- jointed, thickness > 6mm
4407 9920		-Of paulownia
4407 9920 10	AB	Wood sawn or chipped lengthwise, sliced or peeled, of paulownia , end-jointed , thickness > 6mm
4407 9920 90	AB	Wood sawn or chipped lengthwise , sliced or peeled , of paulownia, not end-jointed, thickness > 6mm
4407 9930		-North American hardwood (including Walnut)
4407 9930 10	AB	Wood sawn or chipped lengthwise, sliced or peeled, of North American broadleaf hardwood (including walnut) end-jointed, thickness > 6mm

4407 9930 90	AB	Wood sawn or chipped lengthwise , sliced or peeled , of North American broadleaf hardwood (including walnut) not end-jointed, thickness >6mm
4407 9980		-Other temperate, Non-Coniferous wood
4407 9980 11	FEAB	Wood sawn or chipped lengthwise , sliced or peeled , endangered Non-coniferous wood , of temperate, end- jointed , thickness > 6mm
4407 9980 19	AB	Wood sawn or chipped lengthwise, sliced or peeled, of temperate zone, Non-coniferous wood, end-jointed, thickness > 6mm
4407 9980 91	4ABEFxy	Wood sawn or chipped lengthwise , sliced or peeled , endangered Non-coniferous wood of temperate, not end-jointed , thickness > 6mm
4407 9980 99	4ABxy	Wood sawn or chipped lengthwise , sliced or peeled , of temperate zone Non-coniferous wood not end-jointed , thickness > 6mm
4407 9990		-Other
4407 9990 11	AFEB	Wood sawn or chipped lengthwise, sliced or peeled, of Puncture vine wood of South America, end -jointed , thickness > 6mm
4407 9990 12	AFEB	Wood sawn or chipped lengthwise, sliced or peeled, of Chinese eaglewood and similar chinese eaglewood , end-jointed , thickness > 6mm
4407 9990 15	AFEB	Wood sawn or chipped lengthwise, sliced or peeled, of other endangered wood , end - jointed, thickness> 6mm
4407 9990 19	AB	other wood sawn or chipped lengthwise, sliced or peeled , end-jointed thickness > 6mm
4407 9990 91	4xAFEB	Wood sawn or chipped lengthwise, sliced or peeled, of Puncture vine wood of South America not end -jointed , thickness > 6mm
4407 9990 92	4xAFEB	Wood sawn or chipped lengthwise, sliced or peeled, of Chinese eaglewood and similar chinese eaglewood, not end - jointed , thickness > 6mm
4407 9990 95	4xAFEB	Wood sawn or chipped lengthwise, sliced or peeled, of other endangered wood , not end - jointed, thickness > 6mm
4407 9990 99	y4xAB	Other wood sawn or chipped lengthwise, sliced or peeled , not end-jointed , thickness > 6mm

44 01		Fuel wood, in logs, in billets, in twigs, in faggots or in similar forms wood in chips or particles sawdust and wood waste and scrap, whether or not agglomerated in logs, briquettes, pellets or similar forms
4401 1000	AB	-fuel wood, in logs, in billets, in twigs, in faggots or in similar forms
		-wood in chips or particles
4401 2100		--Coniferous
4401 2100 10	ABFE	Chips or particles of endangered coniferous wood
4401 2100 90	AB	Chips or particles of other coniferous wood
4401 2200		-Non-coniferous
4401 2200 10	ABFE	Chips or particles of endangered Non-coniferous wood
4401 2200 90	AB	Chips or particles of other Non-coniferous wood
		-Sawdust and wood Waste and scrap, whether or not agglomerated in logs, briquettes, pellets or similar forms
4401 3100	ABP	-wood pellets
4401 3900	ABP	-Other
40 01		Natural rubber, balata, gutta-percha, guayule, chicle and similar natural gums, in primary forms or in plates, sheets or strip
40011000 暂	AB	-natural rubber latex, whether or not prevulcanized
		-Natural rubber in other forms
4001 2100 暂	AB	-Smoked sheets
4001 2200 暂		-Technically specified natural rubber (TSNR)
4001 2900		-Other
4001 3000		-Balata, gutta-percha, guayule, chicle and similar natural gums
40 05		Compounded rubber, unvulcanized, in primary forms or in plates, sheets or strip
4005 1000		-Compounded with Carbon black or Silica
4005 2000		-Solutions dispersions other than those of subheading No. 4005 10
		-Other
4005 9100		-Plates, sheets and strip
4005 9900		-Other

40 02		Synthetic rubber and factice derived from oils, in primary forms or in plates, sheets or strip mixtures of any products of heading No. 40 01 with any product of this heading, in primary forms or in plates, sheets or strip
		-Styrene-butadiene rubber (SBR); carboxylated styrene-butadiene rubber (XSBR)
		-Latex
4002 1110		---Carboxylated Styrene-butadiene rubber (XSBR)
4002 1190		-Other
		-Other
		---in primary forms
4002 1911		-SBR not worked
4002 1912		-SBR, oil-Filled
4002 1913		-SBR thermo-plasticated
4002 1944		-SBR oil-filled and thermo-plasticated
4002 1919		-Other
4002 1990		-Other
4002 1990 01		Except simple treatment of styrene - butadiene rubber or styrene - butadiene - styrene block copolymer (referring to compression extrusion in order to facilitate transportation)
4002 1990 90		Other styrene - butadiene rubber and carboxy lated styrene - butadiene rubber, plates, sheets or strip (except those under item 4002199010)
		-butadiene rubber (BR)
4002 2010		---in primary forms
4002 2090		-Other
		-Isobutene-isoprene (butyl) rubber (IIR); haloisobutene-isoprene rubber (CIIR or BIIR)
		--Isobutene-Isoprene (butyl) Rubber (IIR)
4002 3110		---in primary forms
4002 3190		-Other
		-Other
4002 3910		---in primary forms
4002 3990		-Other
		-Chloroprene (ehlorobutadiene) Rubber (CR)
4002 4100		-Latex
		-Other
4002 4910		---in primary forms
4002 4990		-Other
		-Acrylonitrile-butadien rubber(NBR)

4002 5100		-Latex
		-Other
4002 5910		---in primary forms
4002 5990		-Other
		-Isoprene rubber (IR)
4002 6010		---In primary forms
4002 6090		-Other
		-Ethylene-propylene-Non-conjugated diene rubber (EPDM)
4002 7010		---in primary forms
4002 7090		-Other
4002 8000		-Mixtures of any product of heading No. 40 01 with any product of this heading
		-Other
4002 9100		-Latex
		-Other
		-Other synthetic rubber
4002 9911		----In primary forms
4002 9919		-Other
4002 9990		-Other
		chemical pulping processes
29 02		Cyclic hydrocarbons
		-Cyclanes, cyclenes and cycloterpenes
2902 1100	AB	--Cyclohexane
		-Other
2902 1910		-Pinene
2902 1920		-- -4-alkyl-4 '-alkyl-bicyclobexane
2902 1990		-Other
2902 1990 11	s	1-methyl cyclopropene
2902 1990 12		D-limonene
2902 1990 90		Other cyclanes , cyclenes and cycloterpenes
2902 2000	AB	-Benzene
2902 3000	23	-Toluene
		-Xylenes
2902 4100		-o-Xylene
2902 4200		--m-Xylene
2902 4300		-p-Xylene
2902 4400		-Mixed Xylene isomers
2902 5000	AB	-Styrene
2902 6000	AB	-ethylbenzene
2902 7000	AB	-Cumene
		-Other

2902 9010		-Tetrahydronaphthalene (tetralin)
2902 9020	AB	-Naphthalene
2902 9030		-Dodecylbenzene
2902 9040		---4 - (4'- alkyl cyclohexyl) cyclohexyl ethylene
2902 9090		-Other
2902 9090 10		Biphenyl
2902 9090 90		other aromatic hydrocarbons
29 05		Acyclic alcohols and their hatogenated, sulphonated, nitrated or nitrosated derivatives
		-Saturated monohydric alcohols
2905 1100	AB	-Methanol (methyl alcohol)
		-Propan-1-ol (propyl alcohol) and propan-2-01 (i-sopropyl alcohol)
2905 1210 智	AB	-Propan-1-ol (propyl alcohol)
2905 1220	ABC	-Propan-2-01 (isopropyl alcohol)
2905 1300	AB	-Butan-1 -ol (n-butyl alcohol)
		-Other butanols
2905 1410		-ISO-butyl alcohol
2905 1420		-sec-butyl alcohol
2905 1430		-tert-Butyl alcohol
		-Octanol (octyl alcohol) and isomors Lhereof-
2905 1610		---n-Octanol
2905 1690		-Other
2905 1700		-Dodecan-1-ol (lauryl alcohol), hexadecan-1-ol (cetyl alcohol) and octadecan-1-ol (stearyl alcohol)
		-Other
2905 1910	23	-3 , 3 -Dimethyl-2-butanol (pinacolyl alcohol)
2905 1990		-Other
2905 1990 10	s	Triacontanol
2905 1990 90		Other saturated monohydric alcohols
		-Unsaturated monohydric alcohols
		-acyclic terpene alcohols
2905 2210		---Geraniol , nerol (cis-3 , 7 -Dimethyl-2 , 6-octadien-1-ob
2905 2220		---Citronellol (3, 7 -Dimethyl-6-octen-1 -ol)
2905 2230	AB	-Linalool
2905 2290		-Other
2905 2900		-Other
		-Diols
2905 3100		-Ethylene glycol (ethanediol)
2905 3200 智		-Propylene glycol (propane-1 ,2-diol)

		-Other
2905 3910		-2 , 5 -dimethyl hexandiol
2905 3990		-Other
2905 399001	AB	I , 3 -Propanediol
2905 3990 02	AB	I , 4 -Butanediol
2905 3990 10	s	Ethohexadiol
2905 3990 90	AB	other diatomic alcohols
		-Other polyhydric alcohols
2905 4100		-2 -Ethyl-2- (hydroxymethyl)propane-1 , 3-diol (tri-methylolpropane)
2905 4200		-Pentaerythritol
2905 4300	AB	-Mannitol
2905 4400		-D-glucitol (sorbitol)
2905 4500	AB	--Glycerol
		-Other
2905 4910	AB	-Xylitol
2905 4990		-Other
		-halogenated, sulphonated, nitrated or nitrosated deiivatives of acyclic alcohols
2905 5100	I	-Ethchlorvynol (INN)
2905 5900		-Other
2905 5900 10	I	Salts of Ethchlorvynol (INN)
2905 5900 20	3A	2-Chloroethanol
2905 5900 30		Bronopol
2905 5900 40	s	Geiftor
2905 5900 90		Other halogenated, sulphonated derivatives, of acyclic alcohol
29 17		Polycarboxylic acids, their anhydrides, halides, peroxides and peroxyacids their hatogenated, sulphonated, nitrated or nitrosated derivatives
		-acyclic polycarboxylic acids, their anhydrides, halides, peroxides, peroxyacids and their derivatives
		-Oxalic acid its salts and esters
2917 1110		-Oxalic acid
2917 1120	4xy	---Cobalt oxalate
2917 1190		-Other
2917 1200	AB	-Adipic acid, its salts and esters
2917 1200 01	AB	Adipic acid
2917 1200 90	AB	Adipic acid ,its salts and esters
		-Azelaic acid, sebacic acid, their salts and esters
2917 1310		-Sebacic acid its salts and esters
2917 1390		-Other

2917 1400		-Maleic anhydride
2917 1900		-Other
2917 1900 10	s	Dibutyl succinate , nifedipinestrobin
2917 1900 90		other acyclic polycarboxylic acid --cyclanic, cyclenic or cycloterpenic polycarboxylic acids, their anhydrides, halides, peroxides, peroxyacids and their derivatives
2917 2010		-Tetrahydro Benzoic anhydride
2917 2090		-Other
2917 2090 10	s	Dimethyl carbate
2917 2090 90	AB	Other cyclanic , cyclenic or cycloterpenic) polycarboxylic acids
		-Aromatic polycarboxylic acids, their anhydrides, halides, peroxides, peroxyacids and their derivatives
2917 3200		- Dioctyl orthophthalates
2917 3300		-Dintynyl or didecyl orthophthalates
		-Other esters of orthaphthalic acid
2917 3410		-Dibutyl orthophthalates
2917 3410 10	s	Dinbutyl phthalate
2917 3410 90		Other phthalic acid dibutyl ester
2917 3490		-Other
2917 3500	AB	-Phthalic anhydride
		-Terephthalic acid and its salts
		-Tere Phthalic acid
2917 3611		-Purified Terephthalic acid
2917 3619		-Other
2917 3690		-Other
2917 3700		-dimethyl cerephthalate
		-Other
2917 3910		---Isophthalic acid
2917 3990		-Other
2917 3990 11	s	Nitrotalisopropyl
2917 3990 12	s	Chloithal - dimethyl
2917 3990 13	s	Chlorthal
2917 3990 90		Other aromatic polycarboxylic acid

84. 43		Printing machinery used for printing, cylinders and other printing components of heading 84.42; other printers Copying machines and facsimile machines, whether or not combined Part and accessories there of- -printing machinery used for printing by means of plates, cylinders and other printing components of heading No. 84. 42
8443. 1100		-Offset printing machinery reel-fed
8443. 1200		-Offset printing machinery sheet-fed, office type (using sheets with one side not exceeding 22cm and the other side not exceeding 36cm in the unfolded state)
		-Other Offset Printing machinery
		-Sheet fed
8443. 1311		-single color
8443. 1312		-Double colors
8443. 1313		-four colors
8443. 1313 ^暫 01		Four - color sheet fed offset printing presses (single folio double side printing speed 16000 folio/hour)
8443. 1313 ^暫 02		Four - color sheet fed offset printing press (single folio double sides printing speed ≥ 13000 pcs/hr)
8443. 1313 ^暫 03		Four - color sheet fed offset printing press (sheetwise or full - sheet one piece single side printing speed ≥ 13000 pcs/hr)
8443. 1313 90		Other four - color sheet fed offset printing press (machines printing with commodities in Duty item 84. 42)
8443. 1319		-Other
8443. 1319 ^暫 01		Five(or higher) - color sheet fed offset printing press (speed 16000 pcs/h)
8443. 1319 ^暫 02		Five(or higher) - color sheet fed offset printing press (single folio double sides printing speed ≥ 13000 pcs/hr)
8443. 1319 ^暫 03		Five(or higher) - color sheet fed offset printings press(sheet wise or full - sheet one piece single side printing speed 13000 pcs/hr)
8443. 1319 90		Other sheet fed offset printing press (machines printing with commodities under heading No.. 84. 42)
8443. 1390		-Other

8443. 1400		-Letterpress printing machinery, reelfed, excluding flexographic printing
8443. 1500		-Letterpress printing machinery Other than reelfed, excluding flexographic printing
8443. 1600		-Flexographic Printing machinery
8443. 1600 ^暂 01		Flexographic printing machinery, linear speed $\geq 300\text{ru/min}$. Wide $\geq 800\text{mm}$ flexographic presses, using goods in heading No. 84. 42 printing
8443. 1600 ^暂 02		Flexographic press, unit-Type, linear speed 160m / min , $250\text{mm} \leq \text{width} < 800\text{mm}$ (with function of stamping or holography or screen printing)
8443. 1600 90		Other flexographic printing machinery (flexographic press and machines printing with commodities under heading No.84. 42)
8443. 1700		--Gravure Printing machinery
8443. 1700 ^暂 01		Gravure printing machinery, linear speed $\geq 350\text{m/min}$, using goods in heading No. 84. 42 to printing
8443. 1700 90		Other gravure printing machinery, using goods in heading No. 84. 42 to printing
		-Other
		-Screen Printing machinery
8443. 1921		---cylinder screen Press
8443. 1921 ^暂 01	0	Rotary screen printing machines for textile
8443. 1921 90	0	Other rotary screen printing machines (printing machinery using the commodities under heading No. 84. 42)
8443. 1922		-Platen Screen Press
8443. 1922 ^暂 01	0	Flat screen printing machines for textile
8443. 1922 10	6	Disk presser for producing compact disks(machines using the commodities under heading No. 84. 42 for printing)
8443. 1922 90	0	Other platen screen presses (printing machinery using the commodities under heading No. 84. 42)
8443. 1929	0	-Other
8443. 1980	0	-Other
		-Other printers , copying machines and facsimile machines , whether or not combined

		-Machines which perform two or more of the functions of printing, copying or facsimile. transmission , capable of connecting to an Automatic data processing machine or to a network
8443. 3110 ^暫		-Electrostatic photosensitive-type
8443. 3110 ^暫 10	M	Electrostatic - sensitive multifunctional integrated encrypting facsimile machines (capable of connecting to an Automatic data processing machine or to a network)
8443. 3110 ^暫 90		Other electrostatic - sensitive multifunctional integrated machines (capable of connecting to an automatic data processing machine or to a network)
8443. 3190		-Other
8443. 3190 10	A	Other machines which perform two of the function of printing, copying(capable of connecting to an automatic data processing machine or to a network)
8443. 3190 20	AM	Other multifunctional integrated encrypting facsimile machines (machines with the function of printing, copying or both)
8443. 3190 90	A	Other machines which perform two or more of the function of printing, copying, facsimile transmission (other than machines which perform two of the function of printing , copying , capable of connecting to an Automatic data processing machine or to a network)
		-Other, capable of connecting to an automatic data processing machine or to a net work
		-Printer of a kind solely used in the machines of heading No. 8471
8443. 3211	A	-Stylus printers
8443. 3212	A	-Laser printers
8443. 3213	A	----ink-jet-printers
8443. 3214	A	-Thermal printers
8443. 3219	A	-Other
		-Digital Printing machines
8443. 3221		----ink-jet Printing machines
8443. 3221 ^暫 01		Ink-jet printing equipment with breadth > 60cm (capable of connecting to an automatic data processing machine or to a network)

8443.3221 ^暫 02		Ink jet printing apparatus ,297 mm < Wide ≤ 360mm , capable of connecting to an automatic data processing machine or to a network
8443. 3221 90		Other digital ink-jet presses (capable of connecting to an automatic data processing machine or to a network)
8443. 3222		-Electrostatic photographic printing machines (laser printing machines)
8443. 3222 ^暫 01		Electrostatic photographic printing equipment (laser printers) with breadth > 32. 9cm (capable connecting to an automatic data processing machine or to a network)
8443. 3222 90		Other digital electrostatic photographic printers (laser printers) (capable connecting to an automatic data processing machine or to a network)
8443. 3229		-Other
8443. 3290		-Other
8443. 3290 10	AM	other encryption facsimile machine (capable connecting to an automatic data processing machine or to a network)
8443. 3290 90	A	Other presses (pinters), copying machine, facsimile Machine and teleprinters (capable of connecting to an automatic data processing machine or to a network)
		-Other
		-Electrostatic photo-copying appcortus
8443. 3911		-Operating by reproducing the original image directly onto the copy(direct process)
8443. 3912		-Operating by reproducing the original image via an intermediate onto the copy (indirect process)
		-Other photocopying apparatus
8443. 3921		----Incorporating an optical system
8443. 3922		-of the contact type
8443. 3923		-thermo copying apparatus
8443. 3924		-thermo - sublime copying apparatus
		-Digital Printing machines
8443. 3931		----ink-jet Printing machines
8443. 3932		-Electrostatic photographic printing machine(Laser printing machines)
8443. 3939		-Other

8443. 3990		-Other
		-Parts and accessories
		-Parts and accessories of Printing machinery used in printing by means of plates, cylinders and other printing components of heading 84. 42
		-machines for uses ancillary to Printing
8443. 9111		-Roll material feeder
8443. 9111 暂 01	0	Automatic roll material feeder, feeding speed 12m/s
8443. 9111 90	0	Other roll material feeder
8443. 9119 暂	0	-Other
8443. 9190 暂		-Other
8443. 9190 暂 01	0	Remote controllers for controlling the use of ink by offset printing machine (including ink-color control devices, ink amount regulation devices and ink fountain containers)
8443.9190 暂 90		Parts and accessories of other machine using the commodities under heading No. 84. 42 for printing
		-Other
8443. 9910	0	-Machines for uses ancillary to Digital Printing machines
		-Parts of Digital Printing machines
8443. 9921		-Thermal print Heads
8443. 9929		-Other
8443. 9929 暂 01		Piezoelectric ink gun(other than parts and accessories of machinery using the commodities under heading No. 8422 for printing)
8443. 9929 90		Other parts of digital printing machine (other than parts and accessories of machinery using the commodities under heading No. 8422 for printing)
8443. 9990		-Other
8443. 9990 10		Photosensitive drums and toner cartridges containing photosensitive drums for other presses(printer) , copying machine and facsimile machine
8443. 9990 90		Spare parts and accessories for other presses (printer) , copying machine and facsimile machine
84. 71		Automatic data processing machines and units thereof magnetic or optical readers, machines for transcribing data onto data media in coded form and machines for processing such data, not elsewhere specified or included

		-Portable Automatic data processing machines, weighing not more than 10kg, consisting of at least a central processing unit, a keyboard and a display
8471. 3010	A	-Panel computer
8471. 3090	A	-Other
		-Other Automatic data processing machines
		--Comprising in the same housing at least a Central processing unit and an input and output unit, whether or not combined
8471. 4110	3	---mainframes
8471. 4120	3	-mini-computers
8471. 4140	A	-Microprocessings
8471. 4190		-Other
		-Other, presented in the form of systems
8471. 4910	3	-mainframes
8471. 4920	3	-mini-computers
8471. 4940		-Microprocessings
		-Other
8471. 4991		-Processing machines for the distributed control system
8471. 4999		-Other
		-Processing units other than those of subheading No. 8471. 41 or 8471. 49 , whether or not containing in the same housing one or two of the following types of unit storage units , input units ,output units
8471. 5010	3	-mainframes
8471. 5020	3	-mini-computers
8471. 5040		-Microprocessings
8471. 5040 01		Microprocessings, with display and host(whether or not containing in the same housing one or two of storage units, input or output units)
8471. 5040 90		Other processing unit of microprocessings (whether or not containing in the same housing one or two of storage units, input or output units)
8471. 5090		-Other
		--input or output units, whether or not containing storage units in the same housing
8471. 6040		-Terminating machines for the huge computers, mainframes and mini-computers
8471. 6050		-Scanner
8471. 6060		-Digitizer

		-Keyboards , mice
8471. 6071		-Keyboards
8471. 6072		-mice
8471. 6090		-Other
		-storage units
8471. 7010		-rigid disk drives
8471. 7020		-Floppy disk drives
8471. 7030		---CD drives
8471. 7030 10		CD-R drives (for automatic data processing machines)
8471. 7030 90		Other CD drives (for automatic data processing machines)
8471. 7090		-Other
8471. 8000		-Other units of Automatic data processing machines
8471. 9000		-Other
8471. 9000 10		CD - R machines used exclusively for copying(also called CD repeaters)
8471. 9000 90		Magnetic or optical readers , not elsewhere specified or included (including machines for transcribing data onto data media in coded form and machines for processing such data)
84. 82		Ball or roller bearings
		-Ball bearings
8482. 1010		-Self - aligning ball bearing
8482. 1020		-Deep groove Ball bearing
8482. 1030		-Angular contact Ball bearing
8482. 1040		-thrust ball bearing
8482. 1090		-Other
8482. 2000		-Tapered Roller bearings, including cone and Tapered roller assemblies
8482. 3000 暂		-spherical Roller bearings
8482. 4000		-Needle Roller bearings
8482. 5000		-Other Cylindrical Roller bearings
8482. 5000 暂 01		Tricyclic eccentric rolling bearing
8482. 5000 90		Other cylindrical roller bearings
8482. 8000		-Other. including combined ball/Roller bearings
		-Parts
8482. 9100 暂		-Balls , needles and rollers
8482. 9900 暂		-Other