

# **Guide of China's Import from Laos 2015**



**ASEAN-CHINA CENTRE**  
**中国 — 东盟 中心**



## Contents

I . Overview of China-ASEAN Economic and Trade Cooperation .....	1
II . Profile of China-Laos Bilateral Trade .....	2
III. List of China's Agricultural Imports from Laos .....	4
(I) Selection Method .....	4
(II) List of Main Agricultural Imports .....	4
(III) Situation of Import Tariff Quotas of China's Agricultural Products .....	6
1. List of agricultural products subject to the administration of import tariff quotas .....	6
2. The import tariff quotas management system of agricultural products .....	6
(IV) Distribution of Import Tariff Quotas of Agricultural Products in 2015 .....	11
1. Distribution of import tariff quotas of grains .....	11
2. Distribution of import tariff quota of cotton .....	13
3. Distribution of import tariff quota of sugar .....	14
IV . List of China's Non-agricultural Imports from Laos .....	17
(I) Selection Method .....	17
(II) List of Main Non-agricultural Imports .....	17
V . Process Management of China's Imports from Laos .....	18
(I) Inspection & Quarantine .....	18
(II) Customs Clearance .....	20
(III) Cooperation between customs and inspection & quarantine departments .....	21
Appendix I .....	23
Appendix II .....	24
Appendix III .....	43



# **I . Overview of China-ASEAN Economic and Trade Cooperation**

China-ASEAN FTA is the first FTA that China signed with other economies. And it is the biggest established FTA. ASEAN is made up by the ten member states of Indonesia, Malaysia, Philippines, Singapore, Thailand, Brunei Darussalam, Vietnam, Lao PDR, Myanmar and Cambodia which covers 1.85 billion people and 1.4 thousand square kilometers. China and ASEAN Member signed the Framework Agreement on China-ASEAN Comprehensive Economic Cooperation at the sixth China-ASEAN Summit in November 2002. The establishment of China-ASEAN free trade area enhances the close economic and trade relations between the two parties, and also contributes to the economic development of Asia and the world at large.

According to the database of the commodity trade of the United Nations, China-ASEAN trade rose at an annual rate of about 20% from over \$50 billion to \$480 billion between 2002 and 2014. And the bilateral accumulated investment is over \$1000. China-ASEAN trade increased fast except that in 2012 since the Global Financial Crisis of 2008, and accounted for 11.16% of China's foreign trade. China-ASEAN trade had been in favor of the ASEAN side during the 2000-2011 period. But China's trade surplus appeared in 2012 and the surplus was \$44.53 billion in 2013. Increasing imports from ASEAN should receive much attention, and it will contribute to China's trade balance.

ASEAN has comparative advantages in products such as rice, fish, wood, etc. in terms of the weather and natural resources. China should import the products more from ASEAN. Since the entrance into the WTO, China's agricultural foreign trade developed fast, but China's agricultural imports increased faster than its agricultural exports and its agricultural trade deficit grew. On one hand, living standards improvement induces the rapid increase of high-quality agricultural products. On the other hand, China's agriculture faces strong competition as agricultural market is open. China-ASEAN agricultural trade developed slowly and the share of China's agricultural foreign trade decreased although ASEAN was still an important source of China's agricultural imports. Agricultural trade between China and ASEAN dropped by about 5% in 2013. The share of China-ASEAN agricultural trade in China's

agricultural foreign trade declined to 9.3% in 2013 from 10.4% in 2009. The gap between supply and demand of grain exists in China. China and ASEAN are complementary in agricultural products such as fruits, vegetables, fish and etc. These can contribute to economic and trade cooperation of the two parties. Since China-ASEAN FTA strategy was carried out, the two parties cut the import tariffs down and promoted trade facilitation such as the procedures of customs clearance, the etc. The bilateral trade liberalization has made great progress. ASEAN suppliers are lack of understanding import quota administration, inspection and quarantine, import operators, etc. in agricultural trade. This hindered the development of agricultural trade between the two parties.

China will widen the opening up to ASEAN, benefit ASEAN on a basis of equality and mutual benefit in the new era of deepening reform and expanding opening-up. Xi Jinping, China's president, pointed out, "China is pleased to improve China-ASEAN FTA, and will manage to bring the bilateral trade up to \$1 trillion by 2020", and "China is pleased to reinforce sea cooperation, make good use of the China-ASEAN Investment Cooperation Fund", and jointly build the 21st Century Maritime Silk Road. In the new era, to compile *The Guide of China's Imports from ASEAN* will inject new impetus into the bilateral economic and trade development.

## **II. Profile of China-Laos Bilateral Trade**

The bilateral economic and trade cooperation between China and Laos has been promoted pragmatically, with remarkable effects. China is the first largest export market, the second largest import source and the largest foreign investment source of Laos. In 2014, the bilateral trade volume was \$3.6 billion, increasing by 32%, of which the total import-export volume of agricultural trade between China and Laos was \$190 million. China's volume of imports from Laos and its volume of exports to Laos were \$1.77 billion and \$1.84 billion respectively. China mainly imports woodworks, ore sand, rubber & rubber products, copper & copper products, fertilizers, etc. from Laos; while mainly exports mechanical & electronic products, vehicles and relevant parts, steel products, tobacco products, etc. to Laos.

Currently, China and Laos are actively promoting the combination of the advocacy of the "21st Century Maritime Silk Road" and the economic & social development planning of Laos to jointly drive the construction of economic cooperation zones and

parks, vigorously promote bilateral economic cooperation projects in infrastructure, electricity, agriculture, people's livelihood and other fields, and strengthen coordination under multilateral and sub-zone economic cooperation frameworks, which will certainly promote both sides' economic and trade cooperation to achieve new development.

### **III. List of China's Agricultural Imports from Laos**

#### **(I) Selection Method**

The trade of agricultural products plays an important role in the China-ASEAN trade, thus ASEAN suppliers need a more particular knowledge on the application of quotas, inspection and quarantine of Chinese agricultural products. In order to prepare this guide, the main agricultural products that China imports from ASEAN shall be firstly determined. Regarding the HS 4-bit code as a basis of classifying agricultural products, in accordance with the ordering of sum of agricultural products that China imported from Laos in 2014, the agricultural products ranking in the top 30 are selected.

#### **(II) List of Main Agricultural Imports**

The list of main agricultural products China imported from Laos in 2014 is formed according to UNCOMTRADE. In order to facilitate Laos suppliers' export of agricultural products to China, the supervision conditions of main agricultural products imported are listed in appendixes (see details in Appendix I and II).

**List of China's Main Agricultural Imports from Laos**

<b>Number</b>	<b>HS Code</b>	<b>Article Description</b>
1	1005	Seed
2	1212	Locust beans, seaweeds and other algae, sugar beet and sugar cane, fresh, chilled, frozen or dried, whether or not ground fruit stones and kernels and other vegetable products ( including unroasted chicory roots of the variety <i>Cichorium intybus sativum</i> ) of a kind used primarily for human consumption, not elsewhere specified or included
3	1006	Rice
4	1106	Flour, meal and powder of the dried legumintous vegetables of heading No. 07 13, of sago or of roots or tubers of heading No. 07 14 or of the products of Chapter 8
5	1104	Cereal grains otherwise worked ( for example, hulled, rolled, flaked, pearled, sliced or kibbled) , except rice of heading No. 10 06 germ of cereals, whole , rolled, flaked or ground
6	1302	Vegetable saps and extracts pectic substances, pectinates and pectates agar-agar and other mucilages and thickeners, whether or not modified,



		derived from vegetable products
7	1008	Buckwheat, millet and canary seed other cereals
8	1108	Starches inulin
9	0902	Tea, whether or not flavoured
10	0106	Other live animals
11	0714	Manioc, arrowroot, salep, Jerusalem artichokes, sweet potatoes and similar roots and tubers with high starch or inulin content, fresh, chilled, frozen or dried, whether or not sliced or in the form
12	2203	Beer made from malt
13	1207	Other oil seeds and oleaginous fruits, whether or not broken
14	2101	Extracts, essences and concentrates, of coffee, tea or mate and preparations with a basis of these products or with a basis of coffee, tea or mate roasted chicory and other roasted coffee substitutes, and extracts, essences and concentrates thereof
15	2303	Residues of starch manufacture and similar residues, beet-pulp, bagasses and other waste of sugar manufacture, brewing or distilling dregs and waste, whether or not in the form of pellets
16	0901	Coffee, whether or not roasted or decaffeinated coffee husks and skins coffee substitutes containing coffee in any proportion
17	0603	Cut flowers and flower buds of a kind suitable for bouquets or for ornamental purposes, fresh, dried, dyed, bleached, impregnated or otherwise prepared
18	1404	Vegetable products not elsewhere specified or included
19	1211	Plants and parts of plants (including seeds and fruits), of a kind used primarily in perfumery, in pharmacy or for insecticidal, fungicidal or similar purposes, fresh or dried, whether or not cut, crushed or powdered
20	2009	Fruit juices (including grape must) and vegetable juices, unfermented and not containing added spirit, whether or not containing added sugar or other sweetening matter
21	0602	Other live plants (including their roots) cuttings and slips mushroom spawn
22	1401	Vegetable materials of a kind used primarily for plaiting (for example, bamboos, rattans, reeds, rushes, osier, raffia, cleaned, bleached or dyed cereal straw, and lime bark)
23	2202	Waters, including mineral waters and aerated waters, containing added sugar or other sweetening matter or flavoured, and other Non-alcoholic beverages, not including fruit or vegetable juices of heading No. 2009
24	1301	Lac natural gums, resins, gum-resins and oleoresins (for example, balsams)
25	1806	Chocolate and other food preparations containing cocoa

### **(III) Situation of Import Tariff Quotas of China's Agricultural Products**

Our country has implemented the import tariff quotas management system to part of agricultural products. Pursuant to the quota quantities as promised in China's schedule of concession and commitments for the trade of goods after entry into the WTO, determine the annual quantities of the agricultural products subject to the administration of import tariff quotas permitted to enter the market. The import of agricultural products within the quota quantities will apply the in-quota tax rate, and the import of agricultural products outside the quota quantities will be implemented under the relevant provisions of the *Regulations of the People's Republic of China on Import and Export Duties*. Meanwhile, matters such as the authorized agency responsible for allocating import quotas of agricultural products have also been explicitly stipulated.

#### **1. List of agricultural products subject to the administration of import tariff quotas**

In accordance with the Interim Measures for the *Administration of Import Tariff Quotas of Agricultural Products* (No. 4 Decree of the Ministry of Commerce and the State Development Planning Commission [2003]), our country implements the import tariff quotas management system to products including wheat, corn, rice, bean oil, colza oil, palm oil, sugar, cotton, wool and wool tops, etc. According to relevant commitments after China joined the WTO, the Ministry of Commerce issues the No.93 bulletin [2005] announcing that China has canceled the import tariff quotas and import state-run trade management of bean oil, palm oil and colza oil since Jan. 1<sup>st</sup>, 2006.

At present, the categories of agricultural products subject to the administration of import tariff quotas are respectively: wheat, corn, rice, sugar, cotton, wool and wool tops.

#### **2. The import tariff quotas management system of agricultural products**

In accordance with the *Interim Measures for the Administration of Import Tariff Quotas of Agricultural Products* (No. 4 Decree of the Ministry of Commerce and the State Development Planning Commission [2003]) and the *Cancel of Import Tariff Quotas and Import state-run trade management, and Implementation of Automatic*

*Import License of Bean Oil, Palm Oil and Colza Oil* (No.93 Decree of the Ministry of Commerce [2005]), within the year of the Gregorian calendar, the State will, pursuant to the quota quantities as promised in China's schedule of concession and commitments for the trade of goods after entry into the WTO, determine the annual quantities of the agricultural products subject to the administration of import tariff quotas permitted to enter the market.

### **(1) Basic requirements**

Wheat, corn, rice, bean oil, colza oil, palm oil, sugar and cotton shall be subject to state-run trade quotas or non-state-run trade quotas. Those subject to state-run trade quotas shall be imported by state-run trade enterprises; those subject to non-state-run trade quotas may be imported by enterprises with the right of trade, and may also be imported directly by the final users with the right of trade.

Wool and wool tops shall be subject to the management of designated import enterprises, which shall be carried out in accordance with the *Measures for the Administration of Designated Management of Goods Import* (No. 21 Decree of the Ministry of Foreign Trade and Economic Cooperation [2001]) promulgated by the former Ministry of Foreign Trade and Economic Cooperation.

Import tariff quotas of agricultural products shall be global quotas.

The import tariff quotas of sugar, wool and wool tops shall be subject to the distribution of the Ministry of Commerce.

The import tariff quotas of wheat, corn, rice and cotton shall be subject to the distribution of the State Development and Reform Commission (SDRC) in conjunction with the Ministry of Commerce (MOFCOM).

The *Certificates of Import Tariff Quotas of Agricultural Products* are applicable to the imports in the trade forms of general trade, processing trade, barter trade, small-scale border trade, assistance, donation and other forms.

The products entering the bonded warehouses, bonded zones and export processing zones are exempted for the *Certificates of Import Tariff Quotas of Agricultural Products*.

### **(2) Application of quotas**

The period for applying for the import tariff quotas of agricultural goods shall be between Oct. 15th and Oct. 30th of each year (with the exception of the distribution form of drawing the quotas by coming order on the basis of contract). The MOFCOM and the SDRC will promulgate the next year's total quantity of import tariff quotas of

each agricultural goods and the specific conditions for the application therefore as well as the tariff serial numbers and applicable tax rates determined by the Customs Tariff Committee of the State Council on the *International Business Daily*, the *China Economic Herald*, the MOFCOM website (<http://www.mofcom.gov.cn>) and the SDRC website (<http://www.sdpc.gov.cn>) one month before the application period. Sugar, wool and wool tops shall be subject to the promulgation of MOFCOM; and wheat, corn, rice and cotton shall be subject to the promulgation of SDRC.

The agencies authorized by MOFCOM shall, in light of the specific conditions promulgated, accept the applications on sugar, wool, wool tops and the relevant documents submitted, and transfer the qualified applications to the MOFCOM before Nov. 30th (with the exception of the distribution form of drawing the quotas by coming order on the basis of contract), with the copies thereof sent simultaneously to the SDRC.

The agencies authorized by SDRC shall, in light of the specific conditions promulgated, accept the applications on wheat, corn, rice, cotton and the relevant documents submitted, and transfer the qualified applications to the SDRC before Nov. 30th, with the copies thereof sent simultaneously to the MOFCOM.

### **(3) Distribution of quotas**

Import tariff quotas shall be distributed on the basis of the quantity applied for by the applicants, their previous import performance, production capacity and other relevant commercial standards or on the basis of the form of drawing by coming order. The minimum quantity of distribution shall be determined on the basis of the commercially feasible shipping quantity of each category of agricultural products.

The MOFCOM and the SDRC will, before Jan. 1st of each year, issue to the final users the *Certificates of Import Tariff Quotas of Agricultural Products* via their respectively authorized agencies, to which the “Special Seal of the MOFCOM for Certificate of Import Tariff Quotas of Agricultural Products” and the “Special Seal of the SDRC for Certificate of Import Tariff Quotas of Agricultural Products” shall be affixed.

The quotas for state-run trade shall be indicated on the *Certificate of Import Tariff Quotas of Agricultural Products*.

### **(4) Valid term of quotas**

The annual import tariff quotas of agricultural goods shall be implemented since Jan. 1st of each year, and shall be valid within the year of the Gregorian calendar. The

*Certificates of Import Tariff Quotas for Agricultural Products* shall be valid from Jan. 1st to Dec. 31st of its current year. The valid term of the *Certificates of Import Tariff Quotas for Agricultural Products* subject to the distribution form of drawing by coming order on the basis of contract shall be carried out in accordance with the detailed implementation rules promulgated.

For the agricultural products subject to import tariff quotas that are shipped out from the departing port before Dec. 31st of the year and shall arrive at the destination next year, the final user shall, by presenting the *Certificate of Import Tariff Quotas of Agricultural Products* and the relevant certifications, apply for term extension to the original agency that has issued the certificate. The said agency may extend the term after having examined the case, but the term may not be extended to a time later than the end of February of the next year.

#### **(5) Implementation of quotas**

The final users shall, pursuant to the relevant provisions of the State on import of the commodities concerned, sign the import contracts by themselves or entrust others to sign the contracts.

For the import of agricultural products for processing trade that is subject to the administration of tariff quotas, the customs shall handle the record-keeping procedures for the processing trade contracts by the *Certificate of Approval for Processing Trade* submitted by the enterprises, and handle the customs clearance procedures by the *Certificate of Import Tariff Quotas of Agricultural Products* submitted where “processing trade” has been indicated under the column of “trade modes”.

Where an enterprise of processing trade fails to re-export the processed products within the prescribed term, it shall go through the writing-off procedures for processing trade contracts within 30 days after the expiration of term. The customs will implement the procedures thereabout according to the relevant provisions on processing trade.

The *Certificate of Import Tariff Quotas of Agricultural Products* will apply the system of one certificate for several batches, that is, a final user in need of importing the products in several batches may go through the customs clearance procedures for several times by the *Certificate of Import Tariff Quotas of Agricultural Products*. A final user shall faithfully fill out the “Column for Final User’s Import” under the *Certificate of Import Tariff Quotas of Agricultural Products* and take the Certificate to the original Certificate issuing agency in exchange for the certificate for the part of quotas that have not gone through the customs clearance procedures.

The excess part of bulk cargos in a batch imported shall be no more than 5% of the batch.

The agricultural products entering the bonded warehouses, bonded zones, export processing zones from outside China and to which import tariff quotas are applied shall be subject to the examination before release and to the supervision and control conducted by the customs in accordance with the relevant provisions. For the agricultural products exiting or imported from outside the bonded warehouses, bonded zones, export processing zones and to which import tariff quotas are applied, the customs will handle the import procedures by the *Certificate of Import Tariff Quotas of Agricultural Goods* in accordance with the relevant provisions on the administration of import of goods.

A final user shall, within 20 office days after finishing the customs clearance procedures for the final batch of products whose quotas are indicated in the *Certificate of Import Tariff Quotas of Agricultural Products*, hand in the original of the first pages (customs procedure pages for the consignee) of the said Certificate signed and sealed by the customs to the original Certificate issuing agency.

A final user shall, before the end of January of the next year, return the original of the unused first pages (customs procedure pages for the consignee) of the Certificate of the current year to the original Certificate issuing agency.

#### **(6) Adjustment of quotas**

Where no contract is concluded before Aug. 15th of the current year for the state-run trade quotas of agricultural products distributed to a final user, the final user may entrust a trade enterprise of any kind with the right of trade to import the products upon the approval of the MOFCOM or the SDRC in accordance with the division of administration as provided in Article 7 of the present Measures. A final user with the right of trade may also import the products directly.

Where a final user holding the Certificate of Import Tariff Quotas of Agricultural Products fails to conclude an import contract for all the quotas already drawn in the current year or fail to fulfill the contract already concluded, it shall return the unfinished quotas to the original Certificate issuing organ before Sept. 15th.

The term for applying for the tariff quotas to be redistributed for the import of agricultural products shall be from Sept. 1st to Sept. 15th of each year (with the exception of the distribution form of drawing by coming order on the basis of contracts). The MOFCOM and the SDRC will respectively promulgate the specific conditions for

applying for the tariff quotas to be redistributed on the *International Business Daily*, the *China Economic Herald*, the MOFCOM website (<http://www.mofcom.gov.cn>) and the SDRC website (<http://www.sdpc.gov.cn>) one month before the application period. The applications shall be submitted to the MOFCOM or the SDRC via their respectively authorized agencies.

Sugar, wool and wool tops shall be subject to the promulgation of MOFCOM, and wheat, corn, rice and cotton shall be subject to the promulgation of SDRC.

A final user that has finished the import tariff quotas distributed of agricultural products before the end of October and has returned the originals of the first pages (customs procedure pages for the consignee) of the *Certificate of Import Tariff Quotas of Agricultural Products* may apply for the tariff quotas to be redistributed.

Before September, 30 of each year, the MOFCOM shall distribute the tariff quotas to be redistributed of bean oil, colza oil, palm oil, sugar, wool and wool tops to the final users (with the exception of the distribution form of drawing by coming order on the basis of contracts), and the SDRC shall distribute the tariff quotas to be redistributed of wheat corn, rice and cotton to the final users.

The tariff quotas to be redistributed shall, in light of the applying conditions promulgated, be distributed according to the form of drawing by coming order. The minimum quantity of distribution shall be determined on the basis of the commercially feasible shipping quantity of each category of agricultural products.

A final user who has obtained the redistributed quotas may entrust a trade enterprise of any kind with the right of trade to import the products. A final user with the right of trade may also import the products directly.

## **(IV) Distribution of Import Tariff Quotas of Agricultural Products in 2015**

### **1. Distribution of import tariff quotas of grains**

The promulgation of quota quantities, application conditions and distribution principles of import tariff quotas of grains in 2015 is subject to the No.22 bulletin of 2014 issued by the SDRC of PRC. On Jan. 5th, 2015, the SDRC promulgated the information of enterprises applying for import tariff quotas of grains in 2015.

### **(1) Quota quantities**

The import tariff quota quantities of grains in 2015 are: 9.636 million tons of wheat, accounting for 10% of non-state-run trade; 7.2 million tons of corn, accounting for 40% of non-state-run trade; 5.32 million tons of rice (including: 2.66 million tons of long-grain rice, and 2.66 million tons of medium and short-grain rice), accounting for 50% of non-state-run trade.

### **(2) Application conditions**

The basic conditions of applicants for import tariff quotas of grains in 2015 are: have registered in the Administration for Industry and Commerce prior to Oct. 1st, 2014; be with good financial condition, tax records and integrity status; strictly implement the statistical system of grain circulation, and be subject to the provisions of minimum and maximum stock quantities for grain operators; during the period of 2012-2014, be with no violation records in the aspects such as customs, industry & commerce, tax affairs, foreign exchange, inspection & quarantine, grain circulation and environmental protection, no credit record of non-performing loan, and no actions violating the *Interim Measures for the Administration of Import Tariff Quotas of Agricultural Products*.

On the premise of such conditions above, applicants for import tariff quota of wheat must also meet one of the following conditions:

State-run trade enterprises;

Enterprises with actual import performance (excluding agent import) in 2014;

Flour manufacturing enterprises with wheat consumption more than 100,000 tons in 2013 or 2014;

Food manufacturing enterprises with flour consumption more than 50,000 tons in 2013 or 2014;

Enterprises engaged in the processing trade and using wheat or flour as the raw material, without actual import performance in 2014 but with the import-export operation right and the certificate of production capacity on processing trade provided by local commerce authorities.

Applicants for import tariff quota of corn and wheat must also meet one of the following conditions:

State-run trade enterprises;

Enterprises with actual import performance (excluding agent import) in 2014;

Feed manufacturing enterprises with corn consumption more than 50,000 tons in



2013 or 2014;

Other manufacturing enterprises with corn consumption more than 150,000 tons in 2013 or 2014;

Enterprises engaged in the processing trade and using corn as the raw material, without actual import performance in 2014 but with the import-export operation right and the certificate of production capacity on processing trade provided by local commerce authorities.

Applicants for import tariff quota of rice (the long-grain rice and the medium and short-grain rice need respective application) must also meet one of the following conditions:

State-run trade enterprises;

Enterprises with actual import performance (excluding agent import) in 2014;

Grain enterprises with the qualification of grain wholesale and retail, reaching the amount of rice sales more than RMB 100 million in 2013 or 2014;

Food manufacturing enterprises with rice consumption more than 50,000 tons in 2013 or 2014;

Enterprises engaged in the processing trade and using rice as the raw material, without actual import performance in 2014 but with the import-export operation right and the certificate of production capacity on processing trade provided by local commerce authorities.

The group enterprises with multiple processing plants must separately apply for and use the import quotas in the name of each independent processing plant. The trading enterprises applying for the import tariff quota of rice can choose to submit the application in the name of group headquarters or subordinate enterprises, but the group headquarters and subordinate enterprises shall not submit the application in the meantime.

### **(3) Quota usage**

The above import tariff quotas of grains must be used by applicants themselves, and the imported goods shall be processed and operated by the enterprises, among which the imported wheat and corn shall be processed for use by the plants; and the imported rice shall be organized for sales in the name of the enterprises.

## **2. Distribution of import tariff quota of cotton**

The promulgation of quantity, application conditions and distribution principles of

import tariff quota of cotton in 2015 is subject to the No.22 bulletin of 2014 issued by the SDRC of PRC.

**(1) Quota quantities**

The import tariff quota quantity of cotton in 2015 is 894,000 tons, among which the state-run trade accounts for 33%.

**(2) Application conditions**

The basic conditions of applicants for import tariff quota of cotton in 2015 are: have registered in the Administration for Industry and Commerce prior to Oct. 1st, 2014; be with good financial condition, tax records and integrity status; during the period of 2012-2014, be with no violation records in the aspects such as customs, industry & commerce, tax affairs, foreign exchange, inspection & quarantine and environmental protection, and with no credit record of non-performing loan; have performed social responsibilities related to business; Without actions violating the *Interim Measures for the Administration of Import Tariff Quotas of Agricultural Products*.

On the premise of such conditions above, applicants for import tariff quota of cotton must also meet one of the following conditions:

State-run trade enterprises;

Enterprises with actual import performance (excluding agent import) in 2014;

Cotton-spinning enterprises with spinning equipment more than 50,000 spindles.

**3. Distribution of import tariff quota of sugar**

The preparation of the quantity and application conditions of import tariff quota of sugar in 2015 is subject to the *Detailed Rules and Regulations on Application and Distribution of Import Tariff Quota of Sugar in 2015* (No.66 Decree of the MOFCOM [2014]).

**(1) Total quantity of tariff quota**

The total quantity of import tariff quota of sugar in 2015 is 1.945 million tons, among which the state-run trade accounts for 70%.

**(2) Types of applicant enterprises**

State-run trade enterprises;

Central enterprises with the function of state reserve;

Enterprises with actual import performance holding the tariff quota of sugar in 2014 (hereinafter referred to as applicants with actual performance);

Sugar enterprises with daily processing capacity more than (equal to) 600 tons, registered capital more than (equal to) RMB 10 million, and annual sales of sugar more than (equal to) RMB 450 million;

Enterprises engaged in the processing trade, using sugar as the raw material.

### **(3) Basic conditions of applicants**

Have registered in the Administration for Industry and Commerce prior to Oct. 1st, 2014, and conducted the publicity of annual reports;

During the period of 2012-2014, be with no violation records in the aspects of customs, foreign exchange, industry & commerce, tax affairs, quality inspection, social security, environmental protection, self-discipline, etc.;

Without actions violating the *Interim Measures for the Administration of Import Tariff Quotas of Agricultural Products* and the *Detailed Rules and Regulations on Application and Distribution of Import Tariff Quota of Sugar in 2014*.

### **(4) Application materials**

Application report for import tariff quotas of agricultural products;

Application form for import tariff quotas of agricultural products;

Copy of business license for enterprise as a legal person (duplicate);

Copies of the 2014 *Certificates of Import Tariff Quotas of Agricultural Products* of sugar and the customs declaration for importation endorsed and signed by customs;

The tax clearance certificate of 2013 proofing the enterprise has paid tax by law.

The applicants with actual performance shall provide the first four items of materials above; the applicants without actual performance shall provide the first, second, third and fifth items of materials. If an applicant without actual performance was constructed and put into operation after 2009, it shall also provide the competent department with an approval document of feasibility study report of the construction project (or an approval document of project proposals) and the completion acceptance report.

### **(5) Distribution of quota**

If the total quantity of import tariff quota can satisfy applications of qualified applicants, the distribution of quota shall be accordant with the application quantities of applicants;

If the total quantity of import tariff quota cannot satisfy applications of qualified applicants, applicants with actual performance can get the preferential quota, and the distribution of quota shall be accordant with actual import performance, production

capacity and sales of applicants in the last year, as well as other relevant commercial standards.

## IV. List of China's Non-agricultural Imports from Laos

### (I) Selection Method

The Non-agricultural products, such as industrial products, account for the major share of China-ASEAN trade. With the further promotion of China-ASEAN free trade area, the tariff level of products like industrial products has been significantly reduced, with relatively high degree of trade & investment liberalization and facilitation. In accordance with the ordering of sum of Non-agricultural products that China imported from Laos in 2014, regarding the HS 2-bit code as a basis of classification, the Non-agricultural products ranking at the top are selected in the first 10 Chapters; then regarding the HS 4-bit code as a basis of classification, the Non-agricultural products ranking in the top 3 of the first 10 Chapters above are selected respectively.

### (II) List of Main Non-agricultural Imports

The list of main Non-agricultural products China imported from Laos in 2014 is formed according to UNCOMTRADE after the top 30 kinds of products are selected on the classification bases of HS 2-bit and HS 4-bit codes. In order to facilitate Laos suppliers' export of relevant products to China, the supervision conditions of main Non-agricultural products imported are listed in appendixes (see details in Appendix I and III).

**List of China's Main Non-agricultural Imports from Laos**

Number	HS Code	Article Description
1	4403	Wood in the rough, whether or not stripped of bark or sapwood, or roughly squared
2	4407	Wood sawn or chipped lengthwise, sliced or peeled, whether or not planed, sanded or finger jointed, of a thickness exceeding 6 mm
3	4402	Wood charcoal (including shell or nut charcoal), whether or not agglomerated
4	2603	Copper ores and concentrates
5	2601	Iron ores and concentrates, including roasted iron pyrites
6	2609	Tin ores and concentrates
7	7403	Refined copper and copper alloys, unwrought
8	7401	Copper mattes cement copper (predeposited copper)

9	7402	Unrefined copper copper anodes for electrolytic refining
10	4001	Natural rubber, balata, gutta-percha, guayule, chicle and similar natural gums, in primary forms or in plates, sheets or strip
11	3104	Mineral or chemical fertilizers, potassic
12	9403	Other furniture and parts thereof
13	9401	Seats ( other than those of heading No.. 94. 02 ) , whether or not convertible into beds, and parts thereof
14	8112	Beryllium, chromium, germanium, vanadium, gallium, hafnium, indium, niobium (columbium),thenium and thallium, and articles of these metals, including waste and scrap

## V . Process Management of China’s Imports from Laos

According to relevant laws and regulations of the State Administration for Quality Supervision and Inspection and Quarantine (AQSIQ) and the General Administration of Customs, the products that China imports from Laos shall be subject to inspection and quarantine, and these imported goods can enter into the domestic market only after passing the supervision of customs.

### (I) Inspection & Quarantine

During the entry inspection declaration, the inspection form for entry goods shall be filled in, and relevant documents such as the contracts, invoices and bills of lading shall be provided according to the *Provisions of Entry-Exit Inspection and Quarantine Declaration*. In addition, relevant documents shall be provided according to requirements in case of the following conditions.

1. Relevant certificates shall be provided for goods subject to safety quality licensing and sanitary registration, or required to be approved and reviewed.

2. For goods requiring quality inspection, foreign quality certificates or quality guarantees, product use instructions as well as relevant standards and technical data shall be provided; for goods delivered with samples, the reference samples must be attached; for goods settled accounts per grade or conditioned weight, an application of weight survey shall be submitted in the meantime.

3. During the entry inspection declaration for waste, the *Approval Certificate for Imported Waste* signed and issued by national environmental protection departments,

the certificate for pre-shipment inspection signed and issued by authorized inspection agencies, etc. shall be provided.

4. For goods applying for damage survey, relevant documents which can prove the situation of damage, such as the damage report of tallying, business records of railways, air traffic accident reports or marine accident reports, shall also be provided.

5. For goods applying for weight (quantity) survey, the detailed list of weight, the list of tallying, etc. shall be also provided.

6. For goods through acceptance of receiving and using departments or tested by other units, the acceptance report or test results, the detailed list of weight, etc. shall be attached with the goods.

7. International travelers entering in the country shall fill in the quarantine declaration form on entry.

8. For animals and plants as well as corresponding products entering in the country, the trade contracts, invoices and certificates of origins shall be provided, and meanwhile, the official quarantine certificate of exporting countries or regions also must be provided; For those required to transact the approval procedures of entry quarantine, the entry quarantine permits for animals and plants shall also be provided.

9. During the inspection declaration of transited animals and plants as well as corresponding products, waybills and quarantine certificates officially provided by the exporting countries or regions shall be held; when transiting animals, transit permits for animals and plants signed and issued by the State Administration of Inspection and Quarantine shall also be submitted.

10. During the entry inspection declaration for transportation and containers, quarantine certificates shall be provided, and health conditions of relevant personnel shall be declared.

11. Entry passengers and traffic personnel carrying companion animals shall provide the quarantine certificate for entry animals and the vaccination certificate.

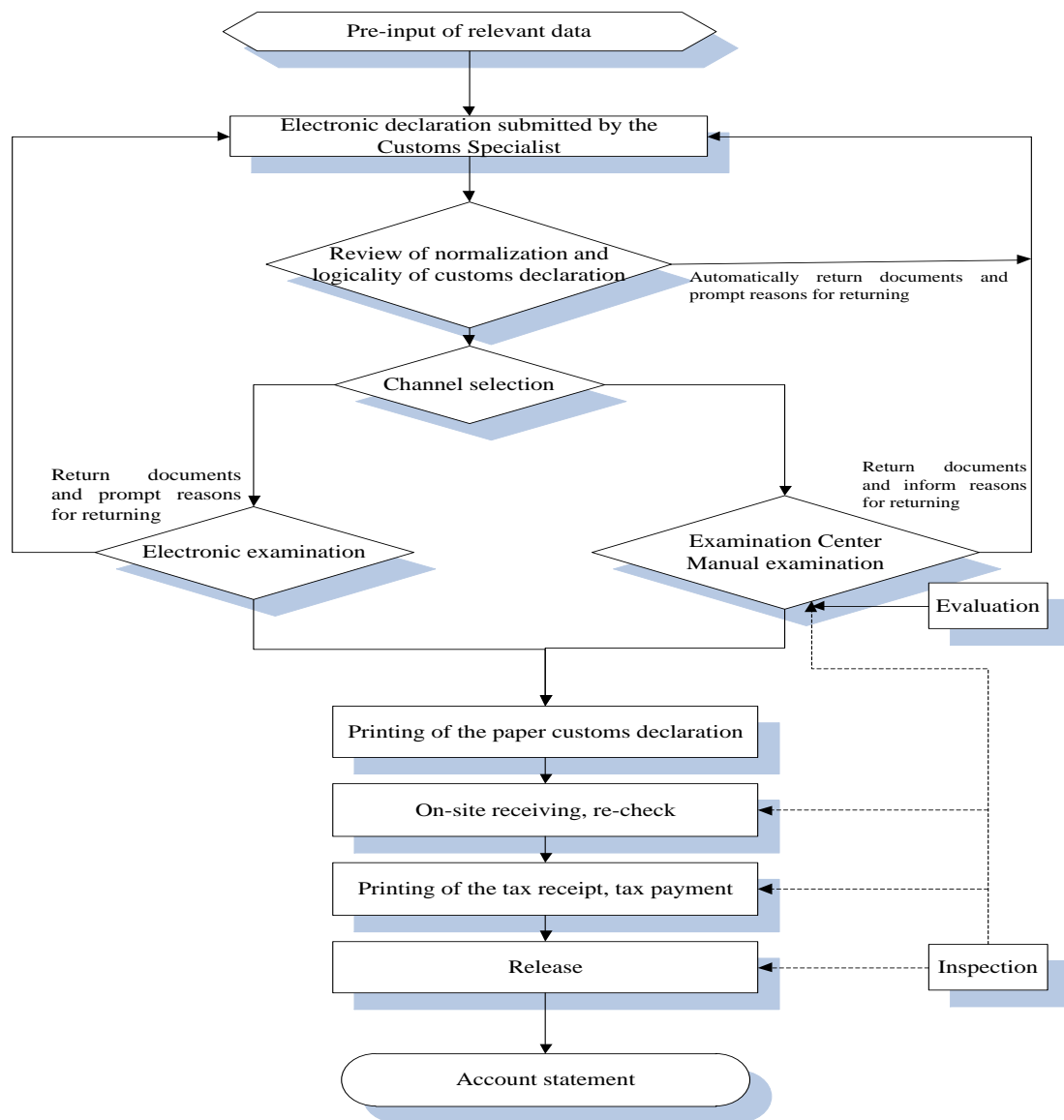
12. For articles banned from entry but need entry due to special requirements such as scientific research, the certificate of special permission signed and issued by the State Administration of Inspection and Quarantine must be provided.

13. For the entry of special articles, relevant approval documents or specified documents shall be provided.

## **(II) Customs Clearance**

The procedure of customs clearance for China's imported products is composed of five basic links, including declaration, inspection, taxation, release and clearance. Declaration refers to the behaviors that a consignee or his agent of imported goods submits the verification certificate to customs and applies for the transaction of customs affairs. Inspection refers to the checks conducted by customs according to laws to the imported goods declared by the declarant, so as to confirm the conformity of documents, certificates and goods, check if there is any violation of laws and if the entry is legal, and prepare conditions for the next customs clearance procedure. Taxation means that customs charge the tariff for imported goods and the taxes for imported links according to relevant national policies, laws and regulations, including tariff classification, application of the tariff rate and import linkage tax rate, approval and determination of the duty-paying value, calculation and payment of taxes. Release is the last link of on-site operations of port customs supervision. Clearance means that customs implement inspections on the goods requiring follow-up management after the port release within a specified period, and deal with the goods requiring supplementary certificates and payment for overdue taxes till all of customs supervision procedures are fully completed. The flow chart of China's product import is as follow:





For the customs clearance of agricultural products subject to import quotas management, the *Certificates of Import Tariff Quotas of Agricultural Products* shall be submitted according to relevant provisions of the *Interim Measures for the Administration of Import Tariff Quotas of Agricultural Products* (No. 4 Decree of the Ministry of Commerce and the State Development Planning Commission [2003]).

### (III) Cooperation between customs and inspection & quarantine departments

According to the *Notification on the Comprehensive Promotion of Cooperation between Customs and Inspection & Quarantine Departments Issued by the General*

*Administration of Customs and the State Administration for Quality Supervision and Inspection and Quarantine* (No.161 Decree of the General Administration of Customs and AQSIQ [2014]), since Aug. 1st, 2014, the “3 Ones” of cooperation between customs and inspection & quarantine departments has been comprehensively promoted to all directly competent customs and inspection & quarantine departments, all sites of customs clearance, and all goods and articles requiring customs declaration and inspection declaration pursuant to the laws, so as to achieve the maximum utilization of facilitation measures provided by customs and inspection & quarantine departments to benefit enterprises.

The “3 Ones” of cooperation between customs and inspection & quarantine departments refers to the “one-off declaration, one-off inspection and one-off release”. The “one-off declaration” refers to “one-off input and respective declarations”, which means that an enterprise only needs to input data for once, and the data will be respectively sent to customs and inspection & quarantine departments; the “one-off inspection” refers to “one-off unpacking that customs and inspection & quarantine departments jointly implement check/inspection & quarantine pursuant to the laws”, which means that both parties of customs and inspection & quarantine departments can jointly implement check/inspection & quarantine to the same batch of goods as required according to their different responsibilities and pursuant to the laws; the “one-off release” refers to “networking check and release of customs and inspection & quarantine departments”, which means that customs and inspection & quarantine departments respectively send the check and release information for goods arriving at ports, and the enterprise can transact procedures for taking delivery of goods by the check and release information of customs and inspection & quarantine departments.

# Appendix I

## List of Supervision Requirements of Customs

License or Official Document Codes	License or Official Document Names
1	Import Licence of the People's Republic of China
2	Import License for Dual-use Items and Technologies
3	Export License for Dual-use Items and Technologies
4	Export Licence of the People's Republic of China
5	Temporary Textiles Export Licence of the People's Republic of China
6	Prohibited Import of Used Mechanical and Electric Products
7	Automatic Import License of the People's Republic of China
8	Export Forbidden Items
9	Import Forbidden Items
A	Certificate of Inspection for Goods Inward
B	Certificate of Inspection for Goods Outward
D	Certificate of Inspection for Goods Inward(Used for Rough Diamonds)
E	Export Permit for Endangered Wild Animals
F	Import Permit for Endangered Wild Animals
G	Export License for Dual-use Items and Technologies(Directionality)
I	Psychotropic Drug Import and Export License
J	The export license or the people's Bank of China import approval of gold products
O	Automatic Import License (Used and New Mechanical and Electrical Products)
P	Certificate of Approval for Import of Wastes
Q	Drug Import Customs Clearance
S	Certificate for the Import and Export of Pesticides
T	License of Transporting Cash in Foreign Currency Inward and Outward
W	Import Authorization for Narcotic Drugs
X	Clearance Notification for Environmental Management on Import/Export of Toxic Chemicals
Z	Certificate of Approval for the Import of Audio and Video Products or Claimed Programs
e	Certificate of Cotton Import Tariff Quota at Out-Quota Preferential Duty Rate
s	Certificate of the Use Identification of Goods under ITA Tax
t	Import Tariff Quota Certificate
v	Automatic Import License of the People's Republic of China (Processing Trade)
x	Export Licence of the People's Republic of China (Processing Trade)
y	Export Licence of the People's Republic of China (Small Amount of Border Trade )

## Appendix II

### Supervision Requirements of Customs of Main Agricultural Imports

HS Code	Code	Article Description
<b>10 05</b>		<b>Maize (corn)</b>
1005 1000		-Seed
1005 1000 01	4xAByt	Maize ( corn) seed (in-quota)
1005 1000 90	4xABy	Maize ( corn) seed ( out-quota)
1005 9000		-Other
1005 9000 01	4xAByt	Other maize ( corn) (in-quota)
1005 9000 90	4xABy	Other maize ( corn) ( out-quota)
<b>12 12</b>		<b>Locust beans, seaweeds and other algae, sugar beet and sugar cane, fresh, chilled, frozen or dried, whether or not ground fruit stones and kernels and other vegetable products ( including unroasted chicory roots of the variety Cichorium intybus sativum ) of a kind used primarily for human consumption, not elsewhere specified or included</b>
		-Seaweeds and Other algae
		-Fit for human consumption
1212 2110	AB	-sea tangle
1212 2120	8A	-Black moss
		-Pinnatifida
1212 2131	AB	-dried
1212 2132	AB	-Fresh
1212 2139	AB	-Other
		-Laver
1212 2141	AB	- Dried
1212 2142	AB	-Fresh
1212 2149	AB	-Other
		-Eucheuma
1212 2161	AB	- Dried
1212 2169	AB	-Other
		----Garcilaria
1212 2171	AB	-dried
1212 2179	AB	-Other
1212 2190	AB	-Other
1212 2900~	AB	-Other
		-Other

1212 9100	AB	-sugar beet
1212 9200	AB	--Locust beans
1212 9300	AB	-sugar cane
1212 9400	AB	--Chicory roots
		-Other
		-Apricot, peach ( including nectarine ) or plum stones and kernels
1212 9911	QAB	-Bitter Apricot kernels
1212 9912	AB	----Sweet Apricot kernels
1212 9919	AB	-Other
		-Other
1212 9993	AB	-Pumpkin Seeds
1212 9994	AB	-Lotus Seeds ( semen Nelumbinis )
1212 9996	ABEF	----leaf of steviol
1212 9999		-Other
1212 9999 10	ABFE	Other endangered vegetable products ( including unroasted chicory roots of the variety Cichorium intybus sativum) of a kind used primarily for human consumption
1212 9999 90	AB	Other fruit stones and kernels and vegetable products (including unroasted chicory roots of the variety Cichorium intybus sativum ) of a kind used primarily for human consumption
<b>10 06</b>		<b>Rice</b>
		-Rice in husk ( Paddy or rough)
		-Seed
1006 1011		-Long grain
1006 1011 01	4xAByt	Rice in husk ( paddy or rough ) , shien rice (long-grained Non-glutinous rice ), seed ( in-quota)
1006 1011 90	4xABv	Rice in husk ( paddy or rough ) , shien rice (long-grained Non-glutinous rice ), seed ( out-quota)
1006 1019		-Other
1006 1019 01	4xAByt	Other rice in husk ( paddy or rough ) , seed (in-quota)
1006 1019 90	4xABy	Other rice in husk (paddy or rough) , seed (out-quota)
		-Other
1006 1091		-Long grain
1006 1091 01	4xAByt	Other rice in husk ( paddy or rough), long grain ( long-grained Non-glutinous rice ) ( in-quota)
1006 1091 90	4xABy	Other rice in husk ( paddy or rough), long grain ( long-grained Non-glutinous rice ) ( out-quota)
1006 1099		-Other

1006 1099 01	4xAByt	Other rice in husk ( paddy or rough) ( in-quota)
1006 1099 90	4xABy	Other rice in husk ( paddy or rough) ( out-quota)
		-Husked (brown) Rice
1006 2010		-Shien Rice
1006 2010 01	4xAByt	Husked ( brown) rice, long grain( long-grained Non-glutinous rice ) ( in-quota )
1006 2010 90	4xABy	Husked ( brown) rice, long grain ( long-grained Non-glutinous rice ) (out-quota )
1006 2090		-Other
1006 2090 01	4xAByt	Other husked( brown) rice (in-quota)
1006 2090 90	4xABy	Other husked ( brown) rice ( out-quota)
		-Semi-milled or wholly missed Rice, whether or not polished or glazed
1006 3010		---Long grain
1006 3010 01	4xAByt	Semi-milled or wholly milled rice, long grain ( long-grained Non-glutinous rice ) whether or not polished or glazed (in-quota)
1006 3010 90	4xABy	Semi-milled or wholly milled rice, long grain ( long-grained Nonglutir20us rice ) [ whether or not polished or glazed ( out-quota) ]
1006 3090		-Other
1006 3090 01	4xAByt	Other semi-milled or wholly milled rice [ whether or not polished or glazed (in-quota) ]
1006 3090 90	4xABy	Other semi-milled or wholly milled rice [ whether or not polished or glazed ( out-quota) ]
		-Broken ERIC
1006 4010		---Long grain
1006 4010 01	4xAByt	Broken rice, long grain ( long-grained Non-glutinous rice) ( in-quota)
1006 4010 90	4xABy	Broken rice, long grain ( long-grained Non-glutinous rice ) ( out-quota )
1006 4090		-Other
1006 4090 01	4xAByt	Other broken rice ( in-quota)
1006 4090 90	4xABy	Other broken rice ( out-quota)
<b>11 06</b>		<b>Flour, meal and powder of the dried leguminous vegetables of heading No. 07 13, of sago or of roots or tubers of heading No. 07 14 or of the products of Chapter 8</b>
1106 1000	AB	-of the dried leguminous vegetables of heading No.07 13
1106 2000	AB	-Of sago or of roots or tubers of heading No. 07 14
1106 3000	AB	-Of the products of Chapter 8

<b>11 04</b>		<b>Cereal grains otherwise worked ( for example, hulled, rolled, flaked, pearled, sliced or kibbled), except rice of heading No. 10 06 germ of cereals, whole , rolled, flaked or ground</b>
		-Rolled or flaked grains
1104 1200	AB	-Of oats
		-Other
1104 1910	AB	-Of barley
1104 1990		-Other
1104 1990 10	4ABxy	Rolled or flaked maize
1104 1990 90	AB	Rolled or flaked other corns
		-Other worked grains (for example, hulled, pearled, sliced or kibbled)
1104 2200	AB	-Of oats
1104 2300		-Of maize ( corn )
1104 2300 01	4xAByc	Maize ( corn) otherwise worked (in-quota)
1104 2300 90	4xABy	Maize ( corn) otherwise worked ( out-quota)
		-Other
1104 2910	AB	-of barley
1104 2990	AB	-Other
1104 3000	AB	-Germ of cereals, whole, Rolled, flaked or ground
<b>13 02</b>		<b>Vegetable saps and extracts pectic substances, pectinates and pectates agar-agar and other mucilages and thickeners, whether or not modified, derived from vegetable products</b>
		-Vegetable saps and extracts
1302 1100	WB9	-Opium
1302 1200	4xABy	-of Liquorice
1302 1300	AB	-of hops
		-Other
1302 1910	AB	---Crude lacquer
1302 1920	ABS	-Azadirachtin
1302 1930	ABS	-of pyrethrum or of the roots of plants containing rotenone
1302 1940	ABE	----Gingko
1302 1990		-Other
1302 199001	ABS	Matrine
1302 1990 11	23AB	Chinese ephedra extract powder used primarily in pesticide
1302 1990 12	23AB	Chinese ephedra extract used primarily in pesticide
1302 1990 13	ABFE	Endangered vegetable saps and extracts for used primarily in pesticide

1302 1990 19	AB	Other vegetable saps and extracts used primarily in pharmacy
1302 1990 91	Q23AB	Chinese ephedra extract powder used primarily in pharmacy
1302 1990 92	Q23AB	Chinese ephedra extract used in pharmacy
1302 1990 93	23AB	Other chinese ephedra extract powder
1302 1990 94	23AB	Other chinese ephedra extract
1302 1990 95	ABFE	Saps and extracts of taxusl
1302 1990 96	ABFE	Saps and extracts of herba dendroii
1302 1990 97	ABFE	Saps and extracts of other endangered vegetable
1302 1990 99	AB	Other vegetable saps and extracts
1302 2000	AB	-Pectic substances, pectinates and pectates
		-Mucilages and thickeners, whether or not modified, derived from vegetable products
1302 3100	AB	-Agar-Agar
1302 3200	AB	-Mucilages and thickeners whether or not modified, derived from locust beans, locust bean seeds or guar seeds
		-Other
		-Preparations of seaweeds and other algae
1302 3911	AB	----Carrageenan
1302 3912	AB	-Algin
1302 3919	AB	-Other
1302 3990		-Other
1302 3990 10	ABFE	Mucilages and thickeners, derived from endangered vegetable products, not elsewhere specified or included
1302 3990 90	AB	Other mucilages and thickeners derived from vegetable products, not elsewhere specified or included
<b>10 08</b>		<b>Buckwheat, millet and canary seed other cereals</b>
1008 1000	AB	-Buckwheat
		-Millet
1008 2100	AB	-Seed
1008 2900	AB	-Other
1008 3000	AB	-Canary Seed
		-Fonio ( Digitaria spp.)
1008 4010	AB	-Seed
1008 4090	B	-Other
		-Quinoa ( Chenopodium Quinoa)
1008 5010	B	-Seed
1008 5090	B	-Other
		-Triticale



1008 6010	B	-Seed
1008 6090	B	-Other
		-Other cereals
1008 9010	B	-Seed
1008 9090	B	-Other
<b>11 08</b>		<b>Starches inulin</b>
		-Starches
1108 1100	AB	-wheat starch
1108 1200	AB	-Maize ( corn) starch
1108 1300	AB	-Potato starch
1108 1400	AB	-Manioc (cassava) starch
1108 1900	AB	-Other Starches
1108 2000	AB	-Inulin
<b>09 02</b>		<b>Tea, whether or not flavoured</b>
		-Green tea ( not fermented) in immediate packings of a content not exceeding 3kg
0902 1010	AB	-Flavoured
0902 1090	AB	-Other
		-Other green tea ( not fermented)
0902 2010	AB	-Flavoured
0902 2090	AB	-Other
		-Black tea (fermented) and partly fermented tea, in immediate packings of a content not exceeding 3 kg
0902 3010	AB	-Oolong tea
0902 3020	AB	-Pure tea
0902 3090	AB	-Other
		-Other black tea ( fermented) and other partly fermented tea
0902 4010	AB	-Oolong tea
0902 4020	AB	-Pure tea
0902 4090	AB	-Other
<b>01 06</b>		<b>Other live animals</b>
		-Mammals
		primates
0106 1110	AFEB	-Pure-bred breeding
0106 1190	AFEB	-Other
		-Whales, dolphins and porpoises ( mammals of the order Cetacea) manatees and dugongs ( mammals of the order Sirenia) seal, sea lion and walrus ( Pinnipedia mammal)

		-Whales, dolphins and porpoises ( mammals of the order Cetacea) manatees and dugongs ( mammals of the order Sirenia)
0106 1211	ABEF	-Pure-bred breeding
0106 1219	ABEF	-Other
		-Seal sea lion and walrus ( mammals of the suborder Pinnipedia)
0106 1221	ABEF	-Pure-bred breeding
0106 1229	ABEF	-Other
		--Camel and Other camelids ( camelidae )
0106 1310		-Pure-bred breeding
0106 1310 10	ABFE	Endangered camel and other endangered camel familia animals, pure-bred breeding (including domesticated and artificially bred)
0106 1310 90	AB	Other camel and other camel familia animals, pure-bred breeding
0106 1390		-Other
0106 1390 10	AFEB	Endangered camel and other endangered camel familia animals ( including domesticated and artificially bred)
0106 1390 90	AB	Other camel and other camel familia animals
		-Rabbits and hares
0106 1410		-Pure-bred breeding
0106 1410 10	ABEF	Endangered hares, pure - bred breeding ( including domesticated and artificially bred)
0106 1410 90	AB	Rabbits and Other hares, pure-bred breeding
0106 1490		-Other
0106 1490 10	ABEF	Other endangered hares ( including domestic and artificially bred)
0106 1490 90	AB	Other rabbits and hares
		-Other
0106 1910		-Pure-bred breeding
0106 1910 10	ABFE	other endangered mammals, pure-bred breeding( including domesticated and artificially bred)
0106 1910 90	AB	Other mammals, pure-bred breeding
0106 1990		-Other
0106 1990 10	AFEB	Other endangered mammals, including domesticated and artificially bred
0106 1990 90	AB	Other mammals
		-Reptiles( including snakes and turtles)
		-Pure-bred breeding
0106 2011	AFEB	---Crocodiles for cultivation
0106 2019	FEAB	-Other
0106 2020		-for human consumption
0106 2020 10	AFEB	Snakes for human consumption ( including domesticated and artificially bred)

0106 2020 20	ABFE	Turtles, for human consumption ( including domesticated and artificially bred)
0106 2020 90	FEAB	Other reptiles, for human consumption( including domesticated and artificially bred)
0106 2090	FEAB	-Other
		-Birds
		-Birds of prey
0106 3110	AFEB	-Pure-bred breeding
0106 3190	ABFE	-Other
		-Psittaciformes ( including parrots, parakeets, macaws and cockatoos)
0106 3210		-Pure-bred breeding
0106 3210 10	AB	Budgerigar, pure-bred breeding
0106 3210 20	AB	Cockatiel (Nymphicus hollandicus ), pure-bred breeding
0106 3210 90	ABFE	other birds of psittaciformes, pure-bred breeding ( including domesticated and artificially bred)
0106 3290		-Other
0106 3290 10	AB	Budgerigar, other than pure-bred breeding
0106 3290 20	AB	Cockatiel ( Nymphicus hollandicus ), other than pure-bred breeding
0106 3290 90	ABFE	Other birds of psittaciformes ( including domesticated and artificially bred) other than pure-bred breeding
		-Ostriches emus
0106 3310		-Pure-bred breeding
0106 3310 10	ABFE	Endangered ostriches, pure-bred breeding ( including domesticated and artificially bred)
0106 3310 90	AB	Other ostriches and emus, pure-bred breeding
0106 3390		-Other
0106 3390 10	ABFE	Other endangered ostriches ( including domesticated and artificially bred)
0106 3390 90	AB	Other ostriches and emus
		-Other
0106 3910		-Pure-bred breeding
0106 3910 10	ABFE	Other endangered birds, pure-bred breeding ( including domesticated and artificially bred)
0106 3910 90	AB	Other birds, pure-bred breeding
		-for human consumption
0106 3921	AB	-Squabs
0106 3923	FEAB	-Teals
0106 3929		-Other
0106 3929 10	ABFE	Other endangered birds, for human consumption ( including domesticated and artificially bred)

0106 3929 90	AB	Other birds for human consumption
0106 3990		-Other
0106 3990 10	ABFE	Other endangered bird, including domesticated and artificially bred
0106 3990 90	AB	other birds
		-Insects
		-Bees
0106 4110	AB	-Pure-bred breeding
0106 4190		-Other
0106 4190 01	ABS	Trichogramma
0106 4190 90	AB	Other bees
		-Other
0106 4910		-Pure-bred breeding
0106 4910 10	ABFE	Other endangered insects, pure - bred breeding ( including domesticated and artificially bred)
0106 4910 90	AB	Other insects, pure -bred breeding
0106 4990		-Other
0106 499001	ABS	Predatory mites
0106 4990 10	ABFE	Other endangered insects( including domesticated and artificially bred)
0106 4990 90	AB	Other insects
		-Other
		-Pure-bred breeding
0106 9011		-Tadpole and young frogs
0106 9011 10	ABFE	Endangered tadpole and young frogs, pure-bred breeding
0106 9011 90	AB	Other tadpole and young frogs, pure-bred breeding
0106 9019		-Other
0106 9019 10	ABFE	Other endangered animals, pure-bred breeding (including domesticated and artificially bred)
0106 9019 90	AB	Other animals , pure-bred breeding
0106 9090		-Other
0106 9090 10	ABFE	Other endangered animals, purebred breeding ( including domesticated and artificially bred)
0106 9090 90	AB	Other animals
<b>07 14</b>		<b>Manioc, arrowroot, salep, Jerusalem artichokes, sweet potatoes and similar roots and tubers with high starch or inulin content, fresh, chilled, frozen or dried, whether or not sliced or in the form</b>
		-Manioc ( cassava)
0714 1010	AB	-Fresh
0714 1020	AB	-dried

0714 1030	AB	---Chilled or frozen
		-Sweet potatoes
		-Fresh
0714 2011	AB	-for cultivation
0714 2019	AB	-Other
0714 2020	AB	-dried
0714 2030	AB	---Chilled or frozen
0714 3000	AB	-Yams (dioscoreae spp. )
0714 4000		-Taros (colocasia spp. )
0714 4000 01	AB	Fresh, chilled taros (colocasia spp.) ( whether or not sliced or made granute taros are also called yunai belong to Spath hyttum of the Araceae vegetables, classified into ground taros and river taros)
0714 4000 90	AB	Frozen, dried taros (colocasia spp.) ( whether or not sliced or made granute taros are also called yunai belong to Spath hyttum of the Araceae vegetables , classified into ground taros and river taros)
0714 5000	AB	-Yautia (Xanthosoma spp. )
		-Other
0714 9010	AB	-water chestnut
		---Lotus ( Nelumbo nucifera ) rootstock
0714 9021	AB	-for cultivation
0714 9029	AB	-Other
0714 9090		-Other
0714 9090 10	ABFE	Tubers of orchid family, fresh, chilled, frozen or dried
0714 9090 91	ABFE	Other endangered similar roots and tubers with high starch or inulin content ( including sago pith, whether or not sliced or made gramule , fresh, chilled, frozen, dried)
0714 9090 99	AB	Other similar roots and tubers with high starch or inulin content ( including sago pith whether or not sliced or in the form of pellets fresh , chilled , frozen , dried)
22 03		Beer made from malt
2203 0000	AB	Beer made from malt
<b>12 07</b>		<b>Other oil seeds and oleaginous fruits, whether or not broken</b>
		-Palm fruit and Palm nut
1207 1010	AB	-Seed
1207 1010 10	ABEF	Endangered palm fruit and palm nut seed
1207 1010 90	AB	Other palm fruit and palm nut, seed
1207 1090	AB	-Other
1207 1090 10	ABEF	Other endangered palm fruit and palm nut ( whether or not broken)
1207 1090 90	AB	Other palm fruit and palm nut( whether or not broken)

		-Cotton Seeds
1207 2100	AB	-Seeds
1207 2900	AB	-Other
		-Castor oil Seeds
1207 3010	AB	-Seed
1207 3090	AB	-Other
		-Sesamum Seeds
1207 4010	AB	-Seeds for cultivation
1207 4090	AB	-Other
		-Mustard Seeds
1207 5010	AB	-Seeds for cultivation
1207 5090	AB	-Other
		-Safflower Seeds
1207 6010	AB	-Seed
1207 6090	AB	-Other
		-Melon Seeds
1207 7010	AB	-Seed
		-Other
1207 7091	AB	-Black Melon Seeds
1207 7092	AB	-red Melon Seeds
1207 7099	AB	-Other
		-Other
1207 9100	AB	-Poppy Seeds
		-Other
1207 9910	AB	-Seed
		-Other
1207 9991	AB	-Shea nuts ( karite nuts )
1207 9999	AB	-Other
<b>21 01</b>		<b>Extracts, essences and concentrates, of coffee, tea or mate and preparations with a basis of these products or with a basis of coffee, tea or mate roasted chicory and other roasted coffee substitutes, and extracts, essences and concentrates thereof</b>
		-Extracts, essences and concentrates of coffee, and preparations with a basis of these extracts, essences or concentrates or with a basis of coffee
2101 1100	AB	-Extracts, essences and concentrates
2101 1200	AB	-Preparations with a basis of extracts, essences or concentrates or with a basis of coffee

2101 2000	AB	-Extracts, essences and concentrates, of tea or mate, and preparations with a basis of these extracts, essences or concentrates or with a basis of tea or mate
2101 3000	AB	-Roasted Chicory and Other roasted Coffee substitutes, and extracts, essences and concentrates thereof
<b>23 03</b>		<b>Residues of starch manufacture and similar residues, beet-pulp, bagasses and other waste of sugar manufacture, brewing or distilling dregs and waste, whether or not in the form of pellets</b>
2303 1000	AB	-Residues of starch manufacture and similar Residues
2303 2000	AB	-Beet-pulp, bagasses and Other Waste of sugar manufacture
2303 3000	AB	-Brewing or distilling dregs and Waste
2303 3000 10	AB	Distiller' s grains with or without Solubles
2303 3000 90	AB	Other brewing or distilling dregs and waste
<b>09 01</b>		<b>Coffee, whether or not roasted or decaffeinated coffee husks and skins coffee substitutes containing coffee in any proportion</b>
		-Coffee, not roasted
0901 1100	AB	--not decaffeinated
0901 1200	AB	-Decaffeinated
		-Coffee, roasted
0901 2100	AB	-not decaffeinated
0901 2200	AB	-Decaffeinated
		-Other
0901 9010	AB	---Coffee husks and skins
0901 9020	AB	---Coffee substitutes containing coffee
<b>06 03</b>		<b>Cut flowers and flower buds of a kind suitable for bouquets or for ornamental purposes, fresh, dried, dyed , bleached , impregnated or otherwise prepared</b>
		-Fresh
0603 1100	AB	-Roses
0603 1200	AB	--Carnations
0603 1300	ABEF	-Orchids
0603 1400	AB	--Chrysanthemums
0603 1500	AB	-lily ( Lilium spp.)
0603 1900		-Other
0603 1900 10	ABFE	Cut flowers and flower buds of endangered plants( of a kind suitable for bouquets or for ornamental purposes ) fresh
0603 1900 90	AB	Other cut flower and flower buds ( of a kind suitable for bouquets or for ornamental purposes) fresh
0603 9000		-Other

0603 9000 10	ABFE	Cut flowers and flower buds of endangered plants ( of a kind suitable for bouquets or for ornamental purposes), other than fresh dried, dyed or otherwise prepared, other than fresh
0603 9000 90	AB	Other cut flowers and flower buds( of a kind suitable for bouquets or for ornamental purposes ) dried, dyed or otherwise prepared, other than fresh
<b>14 04</b>		<b>Vegetable products not elsewhere specified or included</b>
1404 2000	AB	-Cotton linters
		-Other
1404 9010	AB	-Raw Vegetable materials of a kind used primarily in dyeing or tanning
1404 9090	AB	-Other
<b>12 11</b>		<b>Plants and parts of plants (including seeds and fruits), of a kind used primarily in perfumery, in pharmacy or for insecticidal, fungicidal or similar purposes, fresh or dried, whether or not cut, crushed or powdered</b>
		-Ginseng roots
1211 2010	AQBFE	-American Ginseng
1211 2020	ABFE	-Wild Ginseng ( other than American Ginseng)
		-Other
1211 2091	AB	-Fresh
1211 2099	ABQ	-Other
1211 3000		-Coca leaf
1211 3000 10	ABW	Coca leaf of a kind used primarily in pharmacy ( whether or not cut, crushed or powdered)
1211 3000 20	AB	Coca leaf of a kind used primarily in perfumery (whether or not cut, crushed or powdered )
1211 3000 90	AB	Coca leaf of a kind used for insecticidal( whether or not cut, crushed or powdered)
1211 4000		-Poppy straw
1211 4000 10	AB	Poppy straw of a kind used primarily in pharmacy ( whether or not cut, crushed or powdered)
1211 4000 20	AB	Poppy straw of a kind used primarily in perfumery )
1211 4000 90	AB	Poppy straw of a kind used for insecticidal, fungicidal ( whether or not cut, crushed or powdered)
		-Other
		-of a kind used primarily in pharmacy
1211 9011	AQB	-Radix angelicae sinensis
1211 9012	AQB	-Radix pseudoginseng
1211 9013	AQB	-Radix codonopsitis



1211 9014	AQB	-Rhizoma coptidis
1211 9015	AQB	-Flos chrysanthemi
1211 9016	AQBE	----Corclyceps sinensis
1211 9017	AQB	-bulbs fritillariae thunbergii
1211 9018	AQB	-Rhi20ma ligustici
1211 9019	AQB	-Rhi20ma pinelliae
1211 9021	AQB	-Radix paeoniae lactiflorae
1211 9022	AQBFE	-Rhi20ma gastrodiae
1211 9023	AQB	-Radix astragali
1211 9024	AQB	-Rhubarb
1211 9025	AQB	-Rhi20ma atractylodis macrocephalae
1211 9026	AQB	-Radix rehmanniae
1211 9027	AQB	-Flos sophorae
1211 9028	AQB	----Cortex eucommiae
1211 9029	AQB	-Poria
1211 9031	AQB	-Fructus lycii
1211 9032	AQB	-Bantaro Seeds
1211 9033	AQFEB	-atoes wood
1211 9034	AQB	-Adenophora axilliflora
1211 9035	AB	-Southernwood
1211 9036	AQB4xy	-Liquorice roots
1211 9037	ABQ	-scutellaria root
1211 9038		-Flower and leaves of linden tree ( lindens )
1211 9038 10	ABEQ	Flower and leaves of hainan linden , amur linden
1211 9038 90	ABQ	Flower and leaves of other linden tree ( lindens )
1211 9039		-Other
1211 9039 10	23AQB	Chinese ephedra (Ephedrasinica) powder, of a kind used primarily in pharmacy
1211 9039 20	8AQ	Chinese ephedra ( Ephedrasinica ) , of a kind used in primarily pharmacy
1211 9039 30	AWB	Hemp
1211 9039 40	AWB	Poppy pod
1211 9039 50	ABFE	Banksia rose fresh or dried ( whether or not cut, crushed or powdered )
1211 9039 60	ABFE	Herba dendrobii ( in straight form or in earring form ) , fresh or dried ( whether or not cut, crushed or powdered )
1211 9039 70	ABFE	Cistanche deserticola , fresh or dried (whether or not cut crushed or powdered )
1211 9039 80	ABFE	Bark banch and leaf of taxusl, fresh or dried ( whether or not cut

		crushed or powdered)
1211 9039 91	ABFE	Other endangered plants, of a kind used primarily in pharmacy , fresh or dried ( whether or not cut crushed or powdered)
1211 9039 92	AB	Carbon Ghana seeds, plantago shell powder, yohimbe bark ( including part of its, whether or not cut, crushed or ground to powder)
1211 9039 93	ABI	Khat ( including part of its, whether or not cut crushed or powdered)
1211 9039 99	ABQ	Other plants, of a kind used primarily in pharmacy, fresh or dried (including parts of its, whether or not cut crushed or powdered)
1211 9050		-of a kind used primarily in perfumery
1211 9050 10	23AB	Chinese ephedra ( Ephedrasinica) powder, of a kind used primarily in perfumery
1211 9050 20	8A	Chinese ephedra ( Ephedrasinica) of a kind used primarily in perfumery
1211 9050 30	ABFE	Spices ( including part of its, whether or not cut crushed or powdered)
1211 9050 91	ABFE	Other endangered plants, of a kind used primarily in perfumery ( including parts of its, whether or not cut, crushed or powdered)
1211 9050 99	AB	Other plants, of a kind used primarily in perfumery ( including parts of its , whether or not cut crushed or powdered )
		-Other
1211 9091	ABS	-Derris roots and pyrethrum
1211 9099		-Other
1211 9099 10	23AB	Other chinese ephedra (Ephedra sinica) powder
1211 9099 20	8A	Other Chinese ephedra ( Ephedrasinica)
1211 9099 91	ABFE	Other endangered plants, of a kind used for insecticidal, fungicidal fresh or dried( whether or not cut, crushed or powdered
1211 9099 99	AB	Other plants, of a kind used for insecticidal, fungicidal fresh or dried( whether or not cut, crushed or powdered )
<b>20 09</b>		<b>Fruit juices ( including grape must) and vegetable juices, unfermented and not containing added spirit, whether or not containing added sugar or other sweetening matter</b>
		-Orange juice
2009 1100	AB	-Frozen
2009 1200	AB	-not frozen of a Brix value not exceeding 20
2009 1900	AB	-Other
		-Grapefruit ( including pomelo) juice
2009 2100	AB	-Of a Brix value not exceeding 20
2009 2900	AB	-Other
		-Juice of any other single citrus fruit

		-Of a Brix value not exceeding 20
2009 3110	AB	-Lemon juice
2009 3190	AB	-Other
		-Other
2009 3910	AB	-Lemon juice
2009 3990	AB	-Other
		-Pineapple juice
2009 4100	AB	-Of a Brix value not exceeding 20
2009 4900	AB	-Other
2009 5000	AB	-Tomato juice
		-Grape juice ( including Grape must)
2009 6100	AB	-Of a Brix value not exceeding 30
2009 6900	AB	-Other
		-apple juice
2009 7100	AB	-Of a Brix value not exceeding 20
2009 7900	AB	-Other
		-juice of any Other single fruit or Vegetable
2009 8100	AB	--Cranberry juice
		-Other
		-fruit juice
2009 8912	AB	-Mango juice
2009 8913	AB	-Passion-fruit juice
2009 8914	AB	---Cuva juice
2009 8915	AB	-pear juice
2009 8919	AB	-Other
2009 8920	AB	---Vegetable juice
		-Mixtures of juices
2009 9010	AB	-Of fruit juices
2009 9090	AB	-Other
<b>06 02</b>		<b>Other live plants (including their roots) cuttings and slips mushroom spawn</b>
0602 1000		-Unrooted cuttings and slips
0602 1000 10	ABFE	Unrooted cuttings and slips of endangered plants
0602 1000 90	AB	Other unrooted cuttings and slips
		-Trees, shrubs and bushes, grafted or not of kinds which bear edible fruit or nuts
0602 2010	AB	-Seedlings
0602 2090	AB	-Other
		-Rhododendrons and azaleas, grafted or not

0602 3010	AB	-Seedlings
0602 3090	AB	-Other
		-Roses, grafted or not
0602 4010	AB	-Seedlings
0602 4090	AB	-Other
		-Other
0602 9010	AB	-Mushroom spawn
		-Other
0602 9091		-Seedlings
0602 9091 10	AFEB	Orchid, seedlings
0602 9091 20	AFEB	Chinese yew , seeding
0602 9091 91	AFEB	Other seedlings of endangered plants
0602 9091 99	AB	Other nursery stock, seedlings
0602 9092	ABFE	-Orchid
0602 9093	AB	----Chrysanthemum
0602 9094		-lily
0602 9094 10	ABFEQ	Atoe (other than seedlings)
0602 9094 90	AB	Other lily ( other than seedling )
0602 9095	AB	----Carnation
0602 9099		-Other
0602 9099 10	ABFE	Sago cycas ( Cycas revoluta)
0602 9099 20	ABFE	Cactus ( including ball cactus, column cactus, finger cactus)
06029099 30	ABFE	Chinese yew ( other than seeding)
0602 9099 91	AFEB	Other live endangered plants( other than seedlings)
0602 9099 99	AB	Other live plants ( other than seedlings)
<b>14 01</b>		<b>Vegetable materials of a kind used primarily for plaiting ( for example, bamboos, rattans, reeds, rushes, osier, raffia, cleaned, bleached or dyed cereal straw, and lime bark)</b>
1401 1000		-Bamboos
1401 1000 10	ABE	Acidosasa chinensis ( Raphia vinifera )
1401 1000 90	AB	Other bamboos
1401 2000		-Rattans
1401 2000 10	ABFE	Endangered rattans
1401 2000 90	AB	Other rattans
		-Other
1401 9010	AB	---Cereal straw ( Other than wheat straw)
1401 9020	AB	-Reeds
		-Rushes
1401 9031	AB4xy	-mat rush

1401 9039	AB	-Other
1401 9090	AB	-Other
<b>22 02</b>		<b>Waters, including mineral waters and aerated waters, containing added sugar or other sweetening matter or flavoured, and other Non-alcoholic beverages, not including fruit or vegetable juices of heading No.20 09</b>
2202 1000		-waters, including Mineral waters and aerated waters, containing added sugar or other sweetening matter or flavoured
2202 1000 10	ABEF	Waters containing added sugar or other sweetening matter or flavoured of endangered animals and plant ( including mineral waters and aerated water)
2202 1000 90	AB	Other waters , containing added sugar or other sweetening matter or flavoured ( including mineral waters and aerated waters)
2202 9000		-Other
2202 9000 11	ABEF	Non-alcoholic beverages, in bulk, containing endangered animals and plants compositions ( Other than fruit juices and vegetable juices of heading No. 2009)
2202 9000 19	AB	Other Non-alcoholic beverages, in bulk ( Other than fruit juices and vegetable juices of heading No. 2009 )
2202 9000 91	ABEF	Non-alcoholic beverages, with other packing containing compositions of endangered animals and plants (other than fruit juices and vegetable juices of heading No. 2009)
2202 9000 99	AB	Non-alcoholic beverages, with other packing ( other than fruit juices and vegetable juices of heading No. 2009 )
<b>13 01</b>		<b>Lac natural gums, resins, gum-resins and oleoresins (for example, balsams)</b>
1301 2000	AB	-Gum Arabic
		-Other
1301 9010	AB	---Gum tragacanth
1301 9020	BQ	-Olibanum, myrrh and dragon's blood
1301 9030	AB	-Asafoetida
1301 9040		-Pine -resin
1301 9040 10	ABE	Pine-resin of endangered plants of pine family
1301 9040 90	AB	Other pine-resin
1301 9090		-Other
1301 9090 10	BFE	Resin of daemnorops draco, resin of euphorbia, resin of lignum vitae
1301 9090 20	BW	Charas, churru
1301 9090 91	BFE	Other natural gums, resins, gum-resins and oleoresins ( for example, balsams) of endangered plants

1301 9090 99	AB	Other natural gums, resins, gum-resins and oleoresins ( for example, balsams )
<b>18 06</b>		<b>Chocolate and other food preparations containing cocoa</b>
1806 1000	AB	-Cocoa powder, containing added sugar or other sweetening matter
1806 2000	AB	-Other Preparations in blocks, slabs or bars Weighing more than 2kg or in liquid, paste, powder, granular or other hulk form in containers or immediate packings, of a content exceeding 2kg
		-Other in blocks, slabs or bars
1806 3100	AB	- Filled
1806 3200	AB	-not Filled
1806 9000	AB	-Other

## Appendix III

### Supervision Requirements of Customs of Main Non-agricultural Imports

HS Code	Code	Article Description
<b>44 03</b>		<b>Wood in the rough, whether or not stripped of bark or sapwood, or roughly squared</b>
4403 1000		-Treated with paint, stains, Creosote or other Preservatives ( treated with paint, stains, creosote or other preservatives)
4403 1000 10	8AF	Other taxaceae wood in the rough ( treated with paint, stains, creosote or other preservatives)
4403 1000 20	8AF	Other endangered coniferous wood in the rough ( treated with paint, stains, creosote or other preservatives )
4403 1000 90	8A	Other wood in the rough, treated with paint, stains, creosote or other preservatives
		-Other Coniferous
4403 2010		-Korean Pine and Mongolian scotch Pine
4403 2010 10	8AEF	Other korean pine wood in the rough( other than the wood treated with paint, stains, creosote or other preservatives )
4403 2010 90	8A	Other mongolian scotch pine in the rough( other than the wood treated with paint, stains, creosote or other preservatives )
4403 2020	8AF	-White Pine ( spruce and fir)
4403 2020 10	8AF	Endangered white pine, spruce and fir wood in the rough
4403 2020 90	8A	Other white pine , spruce and fir, wood in the rough
4403 2030	8A	-Radiata Pine
4403 2040	8A	-Larch
4403 2050	8A	-Douglas fir
4403 2090		-Other
4403 2090 10	8AF	Other Endangered coniferous wood in the rough
4403 2090 20	8AF	Other endangered coniferous in the rough
4403 2090 90	8A	Other coniferous wood in the rough
		-Other of tropical wood specified in Subheading note 2 to this Chapter
4403 4100	8A	-Dark red Meranti, Light red Meranti and Meranti Bakau
		-Other( of tropical Non-contiferous wood specified in subheading note I to this chapter)
4403 4910	8A	-Teak
4403 4920	8A	-Okoume ( Au koumed )
4403 4930	8A	-Dipterocarpus spp. Keruing

4403 4940	8A	-Kapur ( Dryobalanops spp. )
4403 4950	8A	---Intsia spp. ( Mengaris)
4403 4960	8A	-Koompassia spp. ( Mengaris or Kempas)
4403 4970	8A	-Anisopter spp.
4403 4990		-Other
4403 4990 10	8AF	Endangered tropical wood in the rough, specified in Subheading note 2 to this Chapter( other than the wood treated with paint, stains, creosote or other preservatives )
4403 4990 90	8A	Tropical wood in the rough, specified in Subheading note 2 to this Chapter ( other than the wood treated with paint, stains, creosote or other preservatives)
		-Other
4403 9100	8A	-of oak ( Quercus spp. )
4403 9200	8A	-Of beech ( Fagus spp. )
		-Other
4403 9910	8A	-of nan mu ( Phoebe )
4403 9920	8A	-of Camphor wood
4403 9930	8AF	-Of rosewood
4403 9940	8A	-Of Kiri ( Paulownia )
4403 9950	8A	-Ash
4403 9960	8A	-North American hard wood ( including cherry, walnut and maple)
4403 9980		-Other, temperate Non-coniferous , not specified
4403 9980 10	8AF	Other temperate zone endangered Non-coniferous wood( other than the wood treated with paint, stains, creosote or other preservatives) not elsewhere specified or included
4403 9980 90	8A	Other temperate zone Non-coniferous wood ( other than the wood treated with paint, stains, creosote or other preservatives) not elsewhere specified or included
4403 9990		-Other
4403 9990 11	8AEF	Puncture vine wood in the rough of South America ( other than the wood treated with paint, stains, creosote or other preservatives)
4403 9990 12	8AEF	" Chinese eaglewood and similar chinese eaglewood (other than the wood treated with paint, stains, creosote or other preservatives) "
4403 9990 19	8AEF	Other endangered Non - coniferous wood in the rough ( other than the wood treated with paint, stains, creosote or other preservatives)
4403 9990 90	8A	Other Non-coniferous wood in the rough ( other Than the wood treated with paint, stains, creosote or other preservatives) not elsewhere specified or included
<b>44 07</b>		<b>Wood sawn or chipped lengthwise, sliced or peeled , whether or not planed, sanded or finger-jointed, of a thickness exceeding 6 mm</b>
		-Coniferous



4407 4010		-Korean Pine and Mongolian scotch Pine
4407 4010 11	ABEF	Korean pine wood sawn or chipped lengthwise, sliced or peeled, end-jointed, thickness > 6mm
4407 4010 19	AB	Mongolian scotch pine wood sawn or chipped lengthwise, sliced or peeled, end-jointed, thickness > 6mm
4407 4010 91	4ABEFxy	Wood sawn or chipped lengthwise, sliced or peeled, of Korean pine, Not end - jointed , thickness > 6mm
4407 4010 99	4ABxy	Wood sawn or chipped lengthwise, sliced or peeled, of Mongolian scotch pine, not end - jointed, thickness > 6mm
4407 1020		-White pine ( spruce and fir)
4407 1020 11	ABEF	Wood sawn or chipped lengthwise, sliced or peeled, of endangered white pine ( spruce and fir), end -jointed, thickness > 6mm
4407 1020 19	AB	Wood sawn or chipped lengthwise, sliced or peeled, of other white pine ( spruce and fir), end - jointed, thickness > 6mm
4407 1020 91	4ABEFxy	Wood sawn or chipped lengthwise, sliced or peeled, of endangered white pine ( spruce and fir) not end -jointed, thickness > 6mm
4407 1020 99	4ABxy	Wood sawn or chipped lengthwise, sliced or peeled, of other white pine ( spruce and fir) , not end - jointed, thickness > 6mm
4407 1030		-Radiata Pine
4407 1030 10	AB	Wood sawn or chipped lengthwise, sliced or peeled, of radiata pine , end-jointed , thickness > 6mm
4407 1030 90	4ABxy	Wood sawn or chipped lengthwise, sliced or peeled, of radiata pine, not end-jointed, thickness > 6mm
4407 1040		-Douglas fir
4407 1040 10	AB	Wood sawn or chipped lengthwise, sliced or peeled, of douglas fir ( Pseudotsuga menziesii) , end-jointed, thickness > 6mm
4407 1040 90	4ABxy	Wood sawn or chipped lengthwise, sliced or peeled, of douglas fir ( Pseudotsuga menziesii) not end-jointed, thickness > 6mm
4407 1090		-Other
4407 1090 11	FEAB	other endangered coniferous wood sawn or chipped lengthwise, sliced or peeled, end-jointed, thickness >6mm
4407 1090 19	AB	Other coniferous wood sawn or chipped lengthwise, sliced or peeled, end-jointed, thickness > 6mm
4407 1090 91	EAB40	Other endangered coniferous wood sawn or chipped lengthwise sliced or peeled, not end-jointed, thickness > 6mm
4407 1090 99	AB4xy	other coniferous wood sawn or chipped lengthwise, sliced or peeled not end-jointed, thickness > 6mm
		-Of tropical wood specified in Subheading note 2 to this chapter
4407 2100		-Mahogany ( Swietenia spp. )

4407 2100 10	FEAB	Wood sawn or chipped lengthwise , sliced or peeled, of mashogany ( swietenia spp. ), end-jointed, thickness > 6mm
4407 2100 90	ABEFxy	Wood sawn or chipped lengthwise , sliced or peeled, of mashogany ( swietenia spp. ), not - end-jointed, thickness > 6mm
4407 2200		--Virola , Imbuia and Balsa
4407 2200 10	AB	Wood sawn or chipped lengthwise sliced or peeled, of virola imbuia and balsa, end-jointed, thickness >6mm
4407 2200 90	4ABxy	Wood sawn or chipped lengthwise, sliced or peeled, of virola imbuia and balsa not end-jointed , thickness >6mm
4407 2500		-Dark red Meranti, Light red Meranti and Merand Bakau
4407 2500 10	AB	Wood sawn or chipped lengthwise, sliced or peeled, of Dark Red Meranti, Light Red Meranti and Meranti Bakau end-jointed, thickness > 6mm
4407 2500 90	4xAB	Wood sawn or chipped lengthwise, sliced or peeled, of Dark Red Meranti, Light Red Meranti and Meranti Bakau not end-jointed, thickness > 6mm
4407 2600		-White Lauan White Meranti, White Seraya, Yellow Meranti and Alan
4407 2600 10	AB	Wood sawn or chipped lengthwise, sliced or peeled, of White Lauan White Meranti, White Seraya, Yellow Meranti and Alan, end-jointed, thickness >6mm
4407 2600 90	4xAB	Wood sawn or chipped lengthwise, sliced or peeled, of White Lauan White Meranti, White Seraya, Yellow Meranti and Alan, not end-jointed, thickness > 6mm
4407 2700		-Sapelli
4407 2700 10	AB	Wood sawn or chipped lengthwise, sliced or peeled, of sapelli, end-jointed , thickness > 6mm
4407 2700 90	4ABxy	Wood sawn or chipped lengthwise, sliced or peeled, of sapelli, not end-jointed thickness > 6mm
4407 2800		---Iroko
4407 2800 10	AB	Wood sawn or chipped lengthwise, sliced or peeled, of Iroko end-jointed , thickness > 6mm
4407 2800 90	4ABxy	Wood sawn or chipped lengthwise, sliced or peeled, of Iroko not end-jointed, thickness > 6mm
		-Other
4407 2910		-Teak
4407 2910 10	AB	Wood sawn or chipped lengthwise, sliced or peeled, of teak, end-jointed, thickness > 6mm
4407 2910 90	4xAB	Wood sawn or chipped lengthwise, sliced or peeled, of teak, not end-jointed, thickness > 6mm
4407 2920		-Acajou

4407 2920 10	AB	Wood sawn or chipped lengthwise, sliced or peeled, of acajou, end-jointed, thickness > 6mm
4407 2920 90	AB	Wood sawn or chipped lengthwise, sliced or peeled, of acajou, not end-jointed, thickness > 6mm
4407 2930		-Merban
4407 2930 10	AB	Wood sawn or chipped lengthwise, sliced or peeled, of merban, end-jointed, thickness > 6mm
4407 2930 90	AB	Wood sawn or chipped lengthwise, sliced or peeled, of merban, not end-jointed, thickness > 6mm
4407 2990		-Other
4407 2990 11	FEAB	Wood sawn or chipped lengthwise, sliced or peeled, of Ramin wood , end-jointed , thickness > 6mm
4407 2990 12	FEAB	Other endangered tropical wood, not elsewhere specified or included in subheading note 2 to this Chapter, sawn or chipped lengthwise, sliced or peeled, end-jointed, thickness > 6mm
4407 2990 19	AB	Wood sawn or chipped lengthwise, sliced or peeled, of other tropical wood not elsewhere specified or included in subheading note 2 to this Chapter, end-jointed, thickness > 6mm
4407 2990 91	4xAFEB	Other tropical endangered wood, not elsewhere specified or included in subheading note 2 to this Chapter, sawn or chipped lengthwise, sliced or peeled, not end-jointed, thickness > 6mm
4407 2990 99	4xAB	Other tropical wood not elsewhere specified or included in subheading note 2 to this Chapter, sawn or chipped lengthwise, sliced or peeled, not end-jointed, thickness >6mm
		-Other
4407 9100		-of oak (Quercus spp. )
4407 9100 10	AB	Wood sawn or chipped lengthwise, sliced or peeled, of oak ( Quercus spp. ), end-jointed, thickness >6mm
4407 9100 90	4xAB	Wood sawn or chipped lengthwise , sliced or peeled, of oak ( Quercus spp. ) , not end-jointed, thickness >6mm
4407 9200		-Of beech ( Fagus spp. )
4407 9200 10	ABE	Wood sawn or chipped lengthwise, sliced or peeled, of beech ( Fagus spp. ) , end-jointed, thickness >6mm
4407 9200 90	ABExy	Wood sawn or chipped lengthwise, sliced or peeled, of beech ( Fagus spp. ) , not end-jointed, thickness >6mm
4407 9300		-of maple (Acer spp. )
4407 9300 10	AB	Wood sawn or chipped lengthwise, sliced or peeled, of maple, end-jointed, thickness > 6mm
4407 9300 90	4ABxy	Wood sawn or chipped lengthwise, sliced or peeled, of maple, not end-jointed, thickness > 6mm
4407 9400		-of cherry (Prunus spp.)

4407 9400 10	AB	Wood sawn or chipped lengthwise , sliced or peeled, of cherry , end-jointed, thickness > 6mm
4407 9400 90	4ABxy	Wood sawn or chipped lengthwise, sliced or peeled, of cherry, not end - jointed, thickness > 6mm
4407 9500		-of Ash ( Fraxinus, spp.)
4407 9500 10	AB	Wood sawn or chipped lengthwise , sliced or peeled, of ash , end-jointed, thickness > 6mm
4407 9500 90	ABxy	Wood sawn or chipped lengthwise, sliced or peeled, of ash not end - jointed thickness > 6mm
		-Other
4407 9910		-of Camphor-wood, nanmu or rosewood
4407 9910 10	AFEB	Wood sawn or chipped lengthwise, sliced or peeled , of camphor-wood, nanmu or rosewood, end-jointed, thickness > 6mm
4407 9910 90	4xAFEB	Wood sawn or chipped lengthwise, sliced or peeled, of camphor-wood nanmu or rosewood not end-jointed, thickness > 6mm
4407 9920		-Of paulownia
4407 9920 10	AB	Wood sawn or chipped lengthwise, sliced or peeled, of paulownia , end-jointed , thickness > 6mm
4407 9920 90	AB	Wood sawn or chipped lengthwise , sliced or peeled , of paulownia, not end-jointed, thickness > 6mm
4407 9930		-North American hardwood ( including Walnut)
4407 9930 10	AB	Wood sawn or chipped lengthwise, sliced or peeled, of North American broadleaf hardwood ( including walnut) end-jointed, thickness > 6mm
4407 9930 90	AB	Wood sawn or chipped lengthwise, sliced or peeled, of North American broadleaf hardwood ( including walnut) not end-jointed, thickness > 6mm
4407 9980		-Other temperate, Non-Coniferous wood
4407 9980 11	FEAB	Wood sawn or chipped lengthwise, sliced or peeled, endangered Non-coniferous wood , of temperate, end-jointed, thickness > 6mm
4407 9980 19	AB	Wood sawn or chipped lengthwise, sliced or peeled, of temperate zone , Non-coniferous wood, end-jointed , thickness > 6mm
4407 9980 91	4ABEFxy	Wood sawn or chipped lengthwise, sliced or peeled, endangered Non-coniferous wood of temperate, not end-jointed, thickness > 6mm
4407 9980 99	4ABxy	Wood sawn or chipped lengthwise, sliced or peeled, of temperate zone Non-coniferous wood not end-jointed, thickness > 6mm
4407 9990		-Other
4407 9990 11	AFEB	Wood sawn or chipped lengthwise, sliced or peeled, of Puncture vine wood of South America end -jointed , thickness > 6mm
4407 9990 12	AFEB	Wood sawn or chipped lengthwise, sliced or peeled, of Chinese eaglewood and similar chinese eagle-wood , end-jointed , thickness >

		6mm
4407 9990 15	AFEB	Wood sawn or chipped lengthwise, sliced or peeled, of other endangered wood, end - jointed, thickness> 6mm
4407 9990 19	AB	other wood sawn or chipped lengthwise, sliced or peeled, end-jointed thickness > 6mm
4407 9990 91	4xAFEB	Wood sawn or chipped lengthwise, sliced or peeled, of Puncture vine wood of South America not encl -jointed , thickness > 6mm
4407 9990 92	4xAFEB	Wood sawn or chipped lengthwise, sliced or peeled, of Chinese eaglewood and similar chinese eaglewood, not end - jointed, thickness > 6mm
4407 9990 95	4xAFEB	Wood sawn or chipped lengthwise, sliced or peeled, of other endangered wood, not end - jointed, thickness > 6mm
4407 9990 99	y4xAB	Other wood sawn or chipped lengthwise, sliced or peeled, not end-jointed, thickness > 6mm
<b>44 02</b>		<b>Wood charcoal (including shell or nut charcoal), whether or not agglomerated</b>
4402 1000		-of bamboo
4402 9000		-Other
4402 9000 10	8	Wood charcoal obtained by burning wood
4402 9000 90		Other wood charcoal ( including shell or nut charcoal, whether or not agglomerated)
<b>26 03</b>		<b>Copper ores and concentrates</b>
2603 0000		Copper ores and concentrates
2603 0000 10	7A	Copper ores and concentrates ( part of gold value)
2603 0000 90	7A	Copper ores and concentrates (pan of Non-gold value)
<b>26 01</b>		<b>Iron ores and concentrates, including roasted iron pyrites</b>
		— Iron ores and concentrates, other than roasted iron pyrites
		- Non-agglomerated
2601 1110	7A	-The average grain size less than 0.8mm
2601 1120	7A	-The average grain size not less than 0.8mm but not more Than 6.3 mm
2601 1190	7A	-Other
2601 1200	7A	-Agglomerated
2601 2000	7A	-roasted iron pyrites
<b>26 09</b>		<b>Tin ores and concentrates</b>
2609 0000	4xy	Tin ores and concentrates
<b>74 03</b>		<b>Refined copper and copper alloys , unwrought</b>
		<b>-Refined copper</b>
		--Cathodes and sections of cathodes
		---cathodes

7403 1111		----Containing at least 99.9935 % by weight of copper
74031111 01		Higher purity copper cathode( 99. 9999% > copper content > 99.9935 % )
74031111 90		Higher purity copper cathode ( copper content $\geq$ 99.9999% ) unwrought
7403 1119		-Other
7403 1190		-sections of cathodes
7403 1200		-wire-bars
7403 1300		-billets
7403 1900		-Other
		-copper alloys
7403 2100		--copper-Zine base alloys ( brass)
7403 2200		--copper-lin base alloys ( bronze)
7403 2900		-Other copper alloys ( other than master alloys of heading No. 74 05 )
<b>74 01</b>		<b>Copper mattes cement copper ( predpitated copper)</b>
7401 0000		Copper mattes cement copper ( predpitated copped)
7401 0000 10	9A	cement copper ( predpitated copped)
74010000t090		Copper mattes
<b>74 02</b>		<b>Unrefined copper copper anodes for electrolytic refining</b>
7402 0000		Unrefined copper copper anodes for electrolytic refining
74020000t001	7	Unrefined copper, copper anodes for electrolytic refining ( containing gold value part)
74020000t090		Unrefined copper, copper anodes for electrolytic refining ( not containing gold value part)
<b>40 01</b>		<b>Natural rubber, balata, gutta-percha, guayule, chicle and similar natural gums, in primary forms or in plates, sheets or strip</b>
4001 1000	AB	-natural rubber latex whether or not prevulcanized
		-Natural rubber in other forms
4001 2100	AB	-Smoked sheets
4001 2200		-Technically specified natural rubber ( TSNR)
4001 2900		-Other
4001 3000		-Balata, gutta-percha, guayule, chicle and similar natural gums
<b>31 04</b>		<b>Mineral or chemical fertilizers, potassic</b>
		-Potassium chloride
3104 2020	7A	-Pure Potassium chloride
3104 2090	7AB	-Other
3104 3000	7A	-Potassium sulphace
		-Other

3104 9010	7	---Carnallite , sylvite and Other Crude natural potassium salts
3104 9090	7	-Other
<b>94. 03</b>		<b>Other furniture and parts thereof</b>
9403. 1000		-Metal furniture of a kind used in offices
9403. 2000		-Other metal furniture
9403. 3000		-Wooden furniture of a kind used in offices
9403. 3000 10	ABFE	Furniture of endangered wood, of a kind used in offices
9403. 3000 90	AB	Other wooden furniture of a kind used in offices
9403. 4000		-Wooden furniture of a kind used in the kitchen
9403. 4000 10	ABFE	Furniture of endangered wood, of a kind used in the kitchen
9403. 4000 90	AB	Other wooden furniture of a kind used in the kitchen
		-Wooden furniture of a kind used in the bedroom
9403. 5010		-Of rose wood
9403. 5010 10	ABFE	Furniture of endangered rose wood. of a kind used in the bedroom
9403. 5010 90	AB	Other furniture of rose wood, of a kind used in the bedroom
		-Other
9403. 5091	AB	-Lacquer, lacquer wood furniture
9403. 5099		-Other
9403. 5099 10	ABFE	Furniture of other endangered wood, of a kind used in the bedroom
9403. 5099 90	AB	Furniture of other wood. of a kind used in the bedroom
		-other wooden furniture
9403. 6010		-Of rose wood
9403. 6010 10	ABFE	Other furniture of rose endangered wood ( other than use in the bedroom)
9403. 6010 90	AB	Other furniture of rose wood ( use in the bedroom)
		-Other
9403. 6091	AB	-Lacquer, lacquer wood furniture
9403. 6099		-Other
9403. 6099 10	ABFE	Other furniture of endangered wood( other than use in the bedroom)
9403. 6099 90	AB	Other furniture of wood ( other than use in the bedroom)
9403. 7000		-Furniture of plastics
		-Furniture of other materials, including cane, osier, bamboo or similar materials
9403. 8100	AB	-Of bamboo or rattan
		-Other
9403. 8910	AB	-Of osier or similar materials
9403. 8920		-Of stone
9403. 8990		-Other
9403. 9000		-Parts

9403. 9000 10		Parts of furniture in kitchens of airplanes
9403. 9000 90		Pairs of the articles of heading No. 94. 03
<b>94. 01</b>		<b>Seats ( other than those of heading No. 94. 02 ), whether or not convertible into beds, and parts thereof</b>
9401. 1000		-Seats of a kind used for aircraft
		-Seats of a kind used for motor vehicles
9401. 2010		-With outer surface of leather or composition leather
9401. 2090		-Other
9401. 3000		-Swivel seats with variable height adjustment
		-Seats other than garden seats or camping equipment, convertible into beds
9401. 4010		-With outer surface of leather or composition leather
9401. 4090		-Other
		-Seats of cane, osier. bamboo or similar materials
9401. 5100	AB	-Of bamboo or rattan
9401. 5900	AB	-Other
		-other seats, with wooden frames
		-Upholstered
9401. 6110	AB	-With outer surface of leather or composition leather
9401. 6190	AB	-Other
9401. 6900		-Other
9401. 6900 10	ABEF	Other seats, with endangered wood frames
9401. 6900 90	AB	Other seats, with wood frames (other than seats of No. 94011000 - 94015000 )
		-Other seats, with metal frames
		-Upholstered
9401. 7110		-With outer surface of leather or composition leather
9401. 7190		-Other
9401. 7900		-Other
		-Other seats
9401. 8010		-Of stone
9401. 8090		-Other
9401. 8090 10	EF	Other seats of endangered wood
9401. 8090 90		Other seats
		-Parts
		-Of the motor Vehicles
9401. 9011		-Seat angle regulating devices
9401. 9019		-Other
9401. 9090		-Other



<b>81 12</b>		<b>Beryllium, chromium, germanium, vanadium, gallium, hafnium, indium, niobium (columbium) , rhenium and thallium, and articles of these metals, including waste and scrap</b>
		-beryllium
8112 1200	3A	-Unwrought powders
8112 1300	39	-Waste and Scrap
8112 1900	3	-Other
		-Chromium
8112 2100	4xy	-Unwrought powders
8112 2200	49xy	-Waste and Scrap
8112 2900	4xy	-Other
		-Thallium
8112 5100	AB	-Unwrought powders
8112 5200	9	-Waste and scrap
8112 5900		-Other
		-Other
		-Unwrought waste and scrap powders
8112 9210		---Germanium
8112 9210 10	4APxy	Unwrought germanium waste and scraps
8112 9210 90	4xy	Unwrought germanium powders
8112 9220		---Vanadium
8112 922001	4xy	Unwrought, waste and scrap, powders, vanadium- nitrogen alloys
8112 9220 10	4APxy	Unwrought, vanadium waste and scraps
8112 9220 90	4xy	Unwrought vanadium Powders
8112 9230	4xy	---Indium
8112 9230 01	4xy	Unwrought indium
8112 9230 02	4xy	Indium powders
8112 9230 90	49xy	Unwrought indium waste and scrap
8112 9240		-Niobium
8112 924010	4APxy	Unwrought indium waste and scrap
8112 924090	4xy	Unwrought niobium powders
8112 9290		-Other
8112 9290 11	3AP	Unwrought hafnium waste and scrap
8112 9290 19	3A	Unwrought hafnium powders
8112 9290 91	4APxy	Unwrought gallium, rhenium sawte and scraps
8112 9290 99	4xyA	Unwrought gallium , rhenium powders
		-Other
8112 9910	4xy	---Germanium
8112 9920		---Vanadiurn

8112 992001	4xy	Other vanadium - nitrogen alloys
8112 9920 90	4xy	other vanadium and articles thereof
8112 9930	4xy	---Indium
8112 9940	4xy	-Niobium
8112 9990		-Other
8112 9990 10	3	Wrought hafnium and articles thereof
8112 9990 90	4xY	other wrought gallium , rhenium and articles thereof