

# **Guide of China's Import from Malaysia 2015**



**ASEAN-CHINA CENTRE**  
**中国 — 东盟 中心**



## Contents

I . Overview of China-ASEAN Economic and Trade Cooperation .....	1
II . Profile of China-Malaysia Bilateral Trade .....	2
III. List of China's Agricultural Imports from Malaysia.....	4
(I) Selection Method .....	4
(II) List of Main Agricultural Imports .....	4
(III) Situation of Import Tariff Quotas of China's Agricultural Products .....	6
1. List of agricultural products subject to the administration of import tariff quotas .....	6
2. The import tariff quotas management system of agricultural products .....	7
(IV) Distribution of Import Tariff Quotas of Agricultural Products in 2015 .....	12
1. Distribution of import tariff quotas of grains.....	12
2. Distribution of import tariff quota of cotton .....	14
3. Distribution of import tariff quota of sugar .....	15
IV. List of China's Non-agricultural Imports from Malaysia .....	17
(I) Selection Method .....	17
(II) List of Main Non-agricultural Imports .....	17
V . Process Management of China's Imports from Malaysia .....	19
(I) Inspection & Quarantine .....	19
(II) Customs Clearance .....	21
(III) Cooperation between customs and inspection & quarantine departments.....	22
Appendix I .....	24
Appendix II .....	25
Appendix III.....	36



# **I . Overview of China-ASEAN Economic and Trade Cooperation**

China-ASEAN FTA is the first FTA that China signed with other economies. And it is the biggest established FTA. ASEAN is made up by the ten member states of Indonesia, Malaysia, Philippines, Singapore, Thailand, Brunei Darussalam, Viet Nam, Lao PDR, Myanmar and Cambodia which covers 1.85 billion people and 1.4 thousand square kilometers. China and ASEAN Member signed the Framework Agreement on China-ASEAN Comprehensive Economic Cooperation at the sixth China-ASEAN Summit in November 2002. The establishment of China-ASEAN free trade area enhances the close economic and trade relations between the two parties, and also contributes to the economic development of Asia and the world at large.

According to the database of the commodity trade of the United Nations, China-ASEAN trade rose at an annual rate of about 20% from over \$50 billion to \$480 billion between 2002 and 2014. And the bilateral accumulated investment is over \$1000. China-ASEAN trade increased fast except that in 2012 since the Global Financial Crisis of 2008, and accounted for 11.16% of China's foreign trade. China-ASEAN trade had been in favor of the ASEAN side during the 2000-2011 period. But China's trade surplus appeared in 2012 and the surplus was \$44.53 billion in 2013. Increasing imports from ASEAN should receive much attention, and it will contribute to China's trade balance.

ASEAN has comparative advantages in products such as rice, fish, wood, etc. in terms of the weather and natural resources. China should import the products more from ASEAN. Since the entrance into the WTO, China's agricultural foreign trade developed fast, but China's agricultural imports increased faster than its agricultural exports and its agricultural trade deficit grew. On one hand, living standards improvement induces the rapid increase of high-quality agricultural products. On the other hand, China's agriculture faces strong competition as agricultural market is open. China-ASEAN agricultural trade developed slowly and the share of China's agricultural foreign trade decreased although ASEAN was still an important source of China's agricultural imports. Agricultural trade between China and ASEAN dropped by about 5% in 2013. The share of China-ASEAN agricultural trade in China's

agricultural foreign trade declined to 9.3% in 2013 from 10.4% in 2009. The gap between supply and demand of grain exists in China. China and ASEAN are complementary in agricultural products such as fruits, vegetables, fish and etc. These can contribute to economic and trade cooperation of the two parties. Since China-ASEAN FTA strategy was carried out, the two parties cut the import tariffs down and promoted trade facilitation such as the procedures of customs clearance, the etc. The bilateral trade liberalization has made great progress. ASEAN suppliers are lack of understanding import quota administration, inspection and quarantine, import operators, etc. in agricultural trade. This hindered the development of agricultural trade between the two parties.

China will widen the opening up to ASEAN, benefit ASEAN on a basis of equality and mutual benefit in the new era of deepening reform and expanding opening-up. Xi Jinping, China's president, pointed out, "China is pleased to improve China-ASEAN FTA, and will manage to bring the bilateral trade up to \$1 trillion by 2020", and "China is pleased to reinforce sea cooperation, make good use of the China-ASEAN Investment Cooperation Fund", and jointly build the 21st Century Maritime Silk Road. In the new era, to compile *The Guide of China's Imports from ASEAN* will inject new impetus into the bilateral economic and trade development.

## **II. Profile of China-Malaysia Bilateral Trade**

The year of 2014 was exactly the 40th anniversary of diplomatic relations between China and Malaysia, when their bilateral economic and trade cooperation continuously kept a good development trend. In May 2014, prime ministers of the two countries signed a joint declaration in Beijing, according to which the two sides agreed to work together to elevate the bilateral relation to a new level. Malaysia has become the largest trade partner of China among the ten ASEAN member countries, while China is also the largest trade partner of Malaysia. In 2014, the total commodity import volume of China from Malaysia was \$55.7 billion, while the total commodity export volume of China to Indonesia was \$46.4 billion, of which the total import-export volume of agricultural trade between China and Malaysia was \$6 billion. China mainly imports electronic products, mineral fuels, mechanical equipment and parts, palm oil, rubber and rubber products, etc. from Malaysia.

Currently, China and Malaysia are actively engaged in the cooperative

construction of the “21st Century Maritime Silk Road”, and the two countries’ relation shows vigorous vitality and strong power and steps into a comprehensive, stable and pragmatic development orbit, which will certainly promote the further improvement of the bilateral economic and trade cooperation level.

### **III. List of China's Agricultural Imports from Malaysia**

#### **(I) Selection Method**

The trade of agricultural products plays an important role in the China-ASEAN trade, thus ASEAN suppliers need a more particular knowledge on the application of quotas, inspection and quarantine of Chinese agricultural products. In order to prepare this guide, the main agricultural products that China imports from ASEAN shall be firstly determined. Regarding the HS 4-bit code as a basis of classifying agricultural products, in accordance with the ordering of sum of agricultural products that China imported from Malaysia in 2014, the agricultural products ranking in the top 30 are selected.

#### **(II) List of Main Agricultural Imports**

The list of main agricultural products China imported from Malaysia in 2014 is formed according to UNCOMTRADE. In order to facilitate Malaysia suppliers' export of agricultural products to China, the supervision conditions of main agricultural products imported are listed in appendixes (see details in Appendix I and II).

**List of China's Main Agricultural Imports from Malaysia**

<b>Number</b>	<b>HS Code</b>	<b>Article Description</b>
1	15 11	Palm oil and its fractions, whether or not refined, but not chemically modified
2	15 13	Coconut ( copra ) , palm kernel or babassu oil and fractions thereof, whether or not refined, but not chemically modified
3	19 01	Malt extract food preparations of flour, groats, meal, starch or malt extract, not containing cocoa or containing less than 40% by weight of cocoa calculated on a totally defatted basis, not elsewhere specified or included food preparations of goods of headings No. 04 01 to 04 04, not containing cocoa or containing less than 5%by weight of cocoa calculated on a totally defatted basis, not elsewhere specified or included
4	14 04	Vegetable products not elsewhere specified or included
5	21 06	Food preparations not elsewhere specified or included
6	19 05	Bread , pastry , cakes, biscuits and other bakers' wares, whether or not containing cocoa communion wafers , empty cachets of a kind suitable for pharmaceutical use, seating wafers,



		rice paper and similar products
7	18 04	Cocoa butter, fat and oil
8	21 01	Extracts, essences and concentrates, of coffee, tea or mate and preparations with a basis of these products or with a basis of coffee, tea or mate roasted chicory and other roasted coffee substitutes, and extracts, essences and concentrates thereof
9	15 16	Animal or vegetable fats and oil and fractions thereof, partly or wholly hydrogenated, inter-esterified, reesterified or elaidinized, whether or not refined, but not further prepared
10	18 05	Cocoa powder, not containing added sugar or other sweetening matter
11	15 17	Margarine edible mixtures or preparations of animal or vegetable fats or oils or of fractions of different fats or oils of this Chapter, other than edible fats or oils or their fractions of heading No.15 16
12	09 04	Pepper of the genus Piper dried or crushed or ground fruits of the genus Capsicum or of the genus Pimenta
13	18 03	Cocoa paste, whether or not defatted
14	17 04	Sugar confectionery ( including white chocolate ) , not containing cocoa
15	23 06	Oil-Cake and other solid residues, whether or not ground or in the form of pellets, resulting from the extraction of vegetable fats or oils ,other than those of heading No. 23 04 or 23 05
16	22 02	Waters, including mineral waters and aerated waters, containing added sugar or other sweetening matter or flavoured, and other Non-alcoholic beverages, not including fruit or vegetable juices of heading No. 20 09
17	19 04	Prepared foods obtained by the swelling or roasting of cereals or cereal products ( for example, corn flakes ); cereals ( other than maize ( corn ) in grain form or in the form of flakes or other worked grains ( except flour, groats and meal) , precooked or otherwise prepared, not elsewhere specified or included
18	15 18	Animal or vegetable fats and oils and fractions thereof, boiled, oxidized, dehydrated, sulphurized, blown, polymerized by heat in vacuum or in inert gas or otherwise chemically modified, excluding those of heading No. 15 16 inedible mixtures or preparations of animal or vegetable fats or oils or of fractions of different fats or oils of this Chapter, not elsewhere specified or included
19	08 04	Dates, figs, pineapples, avocados, guavas, mangoes and mangosteens , fresh or dried
20	15 20	Glycerol, crude glycerol waters and glycerol lyes
21	14 01	Vegetable materials of a kind used primarily for plaiting ( for example, bamboos, rattans, reeds, rushes, osier, raffia, cleaned, bleached or dyed cereal straw, and lime bark)

22	09 01	Coffee, whether or not roasted or decaffeinated coffee husks and skins coffee substitutes containing coffee in any proportion
23	21 03	Sauces and preparations therefor mixed condiments and mixes seasonings mustard flour and meal and prepared mustard
24	03 03	Fish, frozen, excluding fish fillets and other fish meat of heading No. 03 04
25	04 10	Edible products of animal origin, not elsewhere specified or included
26	23 01	Flours , meals and pellets, of meat or meat offal, of fish or of crustaceans, molluscs or other aquatic invertebrates, unit for human consumption greaves
27	08 11	Fruit and nuts, uncooked or cooked by steaming or boiling in water, frozen, whether or not containing added sugar or other sweetening matter
28	23 09	Preparations of a kind used in animal feeding
29	52 02	Cotton waste ( including yarn waste and garnetted stock )
30	18 06	Chocolate and other food preparations containing cocoa

### **(III) Situation of Import Tariff Quotas of China's Agricultural Products**

Our country has implemented the import tariff quotas management system to part of agricultural products. Pursuant to the quota quantities as promised in China's schedule of concession and commitments for the trade of goods after entry into the WTO, determine the annual quantities of the agricultural products subject to the administration of import tariff quotas permitted to enter the market. The import of agricultural products within the quota quantities will apply the in-quota tax rate, and the import of agricultural products outside the quota quantities will be implemented under the relevant provisions of the *Regulations of the People's Republic of China on Import and Export Duties*. Meanwhile, matters such as the authorized agency responsible for allocating import quotas of agricultural products have also been explicitly stipulated.

#### **1. List of agricultural products subject to the administration of import tariff quotas**

In accordance with the Interim Measures for the *Administration of Import Tariff Quotas of Agricultural Products* (No. 4 Decree of the Ministry of Commerce and the

State Development Planning Commission [2003]), our country implements the import tariff quotas management system to products including wheat, corn, rice, bean oil, colza oil, palm oil, sugar, cotton, wool and wool tops, etc. According to relevant commitments after China joined the WTO, the Ministry of Commerce issues the No.93 bulletin [2005] announcing that China has cancelled the import tariff quotas and import state-run trade management of bean oil, palm oil and colza oil since Jan. 1<sup>st</sup>, 2006.

At present, the categories of agricultural products subject to the administration of import tariff quotas are respectively: wheat, corn, rice, sugar, cotton, wool and wool tops.

## **2. The import tariff quotas management system of agricultural products**

In accordance with the *Interim Measures for the Administration of Import Tariff Quotas of Agricultural Products* (No. 4 Decree of the Ministry of Commerce and the State Development Planning Commission [2003]) and the *Cancel of Import Tariff Quotas and Import state-run trade management, and Implementation of Automatic Import License of Bean Oil, Palm Oil and Colza Oil* (No.93 Decree of the Ministry of Commerce [2005]), within the year of the Gregorian calendar, the State will, pursuant to the quota quantities as promised in China's schedule of concession and commitments for the trade of goods after entry into the WTO, determine the annual quantities of the agricultural products subject to the administration of import tariff quotas permitted to enter the market.

### **(1) Basic requirements**

Wheat, corn, rice, bean oil, colza oil, palm oil, sugar and cotton shall be subject to state-run trade quotas or non-state-run trade quotas. Those subject to state-run trade quotas shall be imported by state-run trade enterprises; those subject to non-state-run trade quotas may be imported by enterprises with the right of trade, and may also be imported directly by the final users with the right of trade.

Wool and wool tops shall be subject to the management of designated import enterprises, which shall be carried out in accordance with the *Measures for the Administration of Designated Management of Goods Import* (No. 21 Decree of the Ministry of Foreign Trade and Economic Cooperation [2001]) promulgated by the former Ministry of Foreign Trade and Economic Cooperation.

Import tariff quotas of agricultural products shall be global quotas.

The import tariff quotas of sugar, wool and wool tops shall be subject to the

distribution of the Ministry of Commerce.

The import tariff quotas of wheat, corn, rice and cotton shall be subject to the distribution of the State Development and Reform Commission (SDRC) in conjunction with the Ministry of Commerce (MOFCOM).

The *Certificates of Import Tariff Quotas of Agricultural Products* are applicable to the imports in the trade forms of general trade, processing trade, barter trade, small-scale border trade, assistance, donation and other forms.

The products entering the bonded warehouses, bonded zones and export processing zones are exempted for the *Certificates of Import Tariff Quotas of Agricultural Products*.

## **(2) Application of quotas**

The period for applying for the import tariff quotas of agricultural goods shall be between Oct. 15th and Oct. 30th of each year (with the exception of the distribution form of drawing the quotas by coming order on the basis of contract). The MOFCOM and the SDRC will promulgate the next year's total quantity of import tariff quotas of each agricultural goods and the specific conditions for the application therefore as well as the tariff serial numbers and applicable tax rates determined by the Customs Tariff Committee of the State Council on the *International Business Daily*, the *China Economic Herald*, the MOFCOM website (<http://www.mofcom.gov.cn>) and the SDRC website (<http://www.sdpc.gov.cn>) one month before the application period. Sugar, wool and wool tops shall be subject to the promulgation of MOFCOM; and wheat, corn, rice and cotton shall be subject to the promulgation of SDRC.

The agencies authorized by MOFCOM shall, in light of the specific conditions promulgated, accept the applications on sugar, wool, wool tops and the relevant documents submitted, and transfer the qualified applications to the MOFCOM before Nov. 30th (with the exception of the distribution form of drawing the quotas by coming order on the basis of contract), with the copies thereof sent simultaneously to the SDRC.

The agencies authorized by SDRC shall, in light of the specific conditions promulgated, accept the applications on wheat, corn, rice, cotton and the relevant documents submitted, and transfer the qualified applications to the SDRC before Nov. 30th, with the copies thereof sent simultaneously to the MOFCOM.

## **(3) Distribution of quotas**

Import tariff quotas shall be distributed on the basis of the quantity applied for by

the applicants, their previous import performance, production capacity and other relevant commercial standards or on the basis of the form of drawing by coming order. The minimum quantity of distribution shall be determined on the basis of the commercially feasible shipping quantity of each category of agricultural products.

The MOFCOM and the SDRC will, before Jan. 1st of each year, issue to the final users the *Certificates of Import Tariff Quotas of Agricultural Products* via their respectively authorized agencies, to which the “Special Seal of the MOFCOM for Certificate of Import Tariff Quotas of Agricultural Products” and the “Special Seal of the SDRC for Certificate of Import Tariff Quotas of Agricultural Products” shall be affixed.

The quotas for state-run trade shall be indicated on the *Certificate of Import Tariff Quotas of Agricultural Products*.

#### **(4) Valid term of quotas**

The annual import tariff quotas of agricultural goods shall be implemented since Jan. 1st of each year, and shall be valid within the year of the Gregorian calendar. The *Certificates of Import Tariff Quotas for Agricultural Products* shall be valid from Jan. 1st to Dec. 31st of its current year. The valid term of the *Certificates of Import Tariff Quotas for Agricultural Products* subject to the distribution form of drawing by coming order on the basis of contract shall be carried out in accordance with the detailed implementation rules promulgated.

For the agricultural products subject to import tariff quotas that are shipped out from the departing port before Dec. 31st of the year and shall arrive at the destination next year, the final user shall, by presenting the *Certificate of Import Tariff Quotas of Agricultural Products* and the relevant certifications, apply for term extension to the original agency that has issued the certificate. The said agency may extend the term after having examined the case, but the term may not be extended to a time later than the end of February of the next year.

#### **(5) Implementation of quotas**

The final users shall, pursuant to the relevant provisions of the State on import of the commodities concerned, sign the import contracts by themselves or entrust others to sign the contracts.

For the import of agricultural products for processing trade that is subject to the administration of tariff quotas, the customs shall handle the record-keeping procedures for the processing trade contracts by the *Certificate of Approval for Processing Trade*

submitted by the enterprises, and handle the customs clearance procedures by the *Certificate of Import Tariff Quotas of Agricultural Products* submitted where “processing trade” has been indicated under the column of “trade modes”.

Where an enterprise of processing trade fails to re-export the processed products within the prescribed term, it shall go through the writing-off procedures for processing trade contracts within 30 days after the expiration of term. The customs will implement the procedures thereabout according to the relevant provisions on processing trade.

The *Certificate of Import Tariff Quotas of Agricultural Products* will apply the system of one certificate for several batches, that is, a final user in need of importing the products in several batches may go through the customs clearance procedures for several times by the *Certificate of Import Tariff Quotas of Agricultural Products*. A final user shall faithfully fill out the “Column for Final User’s Import” under the *Certificate of Import Tariff Quotas of Agricultural Products* and take the Certificate to the original Certificate issuing agency in exchange for the certificate for the part of quotas that have not gone through the customs clearance procedures.

The excess part of bulk cargos in a batch imported shall be no more than 5% of the batch.

The agricultural products entering the bonded warehouses, bonded zones, export processing zones from outside China and to which import tariff quotas are applied shall be subject to the examination before release and to the supervision and control conducted by the customs in accordance with the relevant provisions. For the agricultural products exiting or imported from outside the bonded warehouses, bonded zones, export processing zones and to which import tariff quotas are applied, the customs will handle the import procedures by the *Certificate of Import Tariff Quotas of Agricultural Goods* in accordance with the relevant provisions on the administration of import of goods.

A final user shall, within 20 office days after finishing the customs clearance procedures for the final batch of products whose quotas are indicated in the *Certificate of Import Tariff Quotas of Agricultural Products*, hand in the original of the first pages (customs procedure pages for the consignee) of the said Certificate signed and sealed by the customs to the original Certificate issuing agency.

A final user shall, before the end of January of the next year, return the original of the unused first pages (customs procedure pages for the consignee) of the Certificate of the current year to the original Certificate issuing agency.

## **(6) Adjustment of quotas**

Where no contract is concluded before Aug. 15th of the current year for the state-run trade quotas of agricultural products distributed to a final user, the final user may entrust a trade enterprise of any kind with the right of trade to import the products upon the approval of the MOFCOM or the SDRC in accordance with the division of administration as provided in Article 7 of the present Measures. A final user with the right of trade may also import the products directly.

Where a final user holding the Certificate of Import Tariff Quotas of Agricultural Products fails to conclude an import contract for all the quotas already drawn in the current year or fail to fulfill the contract already concluded, it shall return the unfinished quotas to the original Certificate issuing organ before Sep. 15th.

The term for applying for the tariff quotas to be redistributed for the import of agricultural products shall be from Sep. 1st to Sep. 15th of each year (with the exception of the distribution form of drawing by coming order on the basis of contracts). The MOFCOM and the SDRC will respectively promulgate the specific conditions for applying for the tariff quotas to be redistributed on the *International Business Daily*, the *China Economic Herald*, the MOFCOM website (<http://www.mofcom.gov.cn>) and the SDRC website (<http://www.sdpc.gov.cn>) one month before the application period. The applications shall be submitted to the MOFCOM or the SDRC via their respectively authorized agencies.

Sugar, wool and wool tops shall be subject to the promulgation of MOFCOM, and wheat, corn, rice and cotton shall be subject to the promulgation of SDRC.

A final user that has finished the import tariff quotas distributed of agricultural products before the end of October and has returned the originals of the first pages (customs procedure pages for the consignee) of the *Certificate of Import Tariff Quotas of Agricultural Products* may apply for the tariff quotas to be redistributed.

Before September, 30 of each year, the MOFCOM shall distribute the tariff quotas to be redistributed of bean oil, colza oil, palm oil, sugar, wool and wool tops to the final users (with the exception of the distribution form of drawing by coming order on the basis of contracts), and the SDRC shall distribute the tariff quotas to be redistributed of wheat corn, rice and cotton to the final users.

The tariff quotas to be redistributed shall, in light of the applying conditions promulgated, be distributed according to the form of drawing by coming order. The minimum quantity of distribution shall be determined on the basis of the commercially

feasible shipping quantity of each category of agricultural products.

A final user who has obtained the redistributed quotas may entrust a trade enterprise of any kind with the right of trade to import the products. A final user with the right of trade may also import the products directly.

## **(IV) Distribution of Import Tariff Quotas of Agricultural Products in 2015**

### **1. Distribution of import tariff quotas of grains**

The promulgation of quota quantities, application conditions and distribution principles of import tariff quotas of grains in 2015 is subject to the No.22 bulletin of 2014 issued by the SDRC of PRC. On Jan. 5th, 2015, the SDRC promulgated the information of enterprises applying for import tariff quotas of grains in 2015.

#### **(1) Quota quantities**

The import tariff quota quantities of grains in 2015 are: 9.636 million tons of wheat, accounting for 10% of non-state-run trade; 7.2 million tons of corn, accounting for 40% of non-state-run trade; 5.32 million tons of rice (including: 2.66 million tons of long-grain rice, and 2.66 million tons of medium and short-grain rice), accounting for 50% of non-state-run trade.

#### **(2) Application conditions**

The basic conditions of applicants for import tariff quotas of grains in 2015 are: have registered in the Administration for Industry and Commerce prior to Oct. 1st, 2014; be with good financial condition, tax records and integrity status; strictly implement the statistical system of grain circulation, and be subject to the provisions of minimum and maximum stock quantities for grain operators; during the period of 2012-2014, be with no violation records in the aspects such as customs, industry & commerce, tax affairs, foreign exchange, inspection & quarantine, grain circulation and environmental protection, no credit record of non-performing loan, and no actions violating the *Interim Measures for the Administration of Import Tariff Quotas of Agricultural Products*.

On the premise of such conditions above, applicants for import tariff quota of wheat must also meet one of the following conditions:

State-run trade enterprises;



Enterprises with actual import performance (excluding agent import) in 2014;

Flour manufacturing enterprises with wheat consumption more than 100,000 tons in 2013 or 2014;

Food manufacturing enterprises with flour consumption more than 50,000 tons in 2013 or 2014;

Enterprises engaged in the processing trade and using wheat or flour as the raw material, without actual import performance in 2014 but with the import-export operation right and the certificate of production capacity on processing trade provided by local commerce authorities.

Applicants for import tariff quota of corn and wheat must also meet one of the following conditions:

State-run trade enterprises;

Enterprises with actual import performance (excluding agent import) in 2014;

Feed manufacturing enterprises with corn consumption more than 50,000 tons in 2013 or 2014;

Other manufacturing enterprises with corn consumption more than 150,000 tons in 2013 or 2014;

Enterprises engaged in the processing trade and using corn as the raw material, without actual import performance in 2014 but with the import-export operation right and the certificate of production capacity on processing trade provided by local commerce authorities.

Applicants for import tariff quota of rice (the long-grain rice and the medium and short-grain rice need respective application) must also meet one of the following conditions:

State-run trade enterprises;

Enterprises with actual import performance (excluding agent import) in 2014;

Grain enterprises with the qualification of grain wholesale and retail, reaching the amount of rice sales more than RMB 100 million in 2013 or 2014;

Food manufacturing enterprises with rice consumption more than 50,000 tons in 2013 or 2014;

Enterprises engaged in the processing trade and using rice as the raw material, without actual import performance in 2014 but with the import-export operation right and the certificate of production capacity on processing trade provided by local commerce authorities.

The group enterprises with multiple processing plants must separately apply for and use the import quotas in the name of each independent processing plant. The trading enterprises applying for the import tariff quota of rice can choose to submit the application in the name of group headquarters or subordinate enterprises, but the group headquarters and subordinate enterprises shall not submit the application in the meantime.

### **(3) Quota usage**

The above import tariff quotas of grains must be used by applicants themselves, and the imported goods shall be processed and operated by the enterprises, among which the imported wheat and corn shall be processed for use by the plants; and the imported rice shall be organized for sales in the name of the enterprises.

## **2. Distribution of import tariff quota of cotton**

The promulgation of quantity, application conditions and distribution principles of import tariff quota of cotton in 2015 is subject to the No.22 bulletin of 2014 issued by the SDRC of PRC.

### **(1) Quota quantities**

The import tariff quota quantity of cotton in 2015 is 894,000 tons, among which the state-run trade accounts for 33%.

### **(2) Application conditions**

The basic conditions of applicants for import tariff quota of cotton in 2015 are: have registered in the Administration for Industry and Commerce prior to Oct. 1st, 2014; be with good financial condition, tax records and integrity status; during the period of 2012-2014, be with no violation records in the aspects such as customs, industry & commerce, tax affairs, foreign exchange, inspection & quarantine and environmental protection, and with no credit record of non-performing loan; have performed social responsibilities related to business; Without actions violating the *Interim Measures for the Administration of Import Tariff Quotas of Agricultural Products*.

On the premise of such conditions above, applicants for import tariff quota of cotton must also meet one of the following conditions:

State-run trade enterprises;

Enterprises with actual import performance (excluding agent import) in 2014;

Cotton-spinning enterprises with spinning equipment more than 50,000 spindles.

### **3. Distribution of import tariff quota of sugar**

The preparation of the quantity and application conditions of import tariff quota of sugar in 2015 is subject to the *Detailed Rules and Regulations on Application and Distribution of Import Tariff Quota of Sugar in 2015* (No.66 Decree of the MOFCOM [2014]).

#### **(1) Total quantity of tariff quota**

The total quantity of import tariff quota of sugar in 2015 is 1.945 million tons, among which the state-run trade accounts for 70%.

#### **(2) Types of applicant enterprises**

State-run trade enterprises;

Central enterprises with the function of state reserve;

Enterprises with actual import performance holding the tariff quota of sugar in 2014 (hereinafter referred to as applicants with actual performance);

Sugar enterprises with daily processing capacity more than (equal to) 600 tons, registered capital more than (equal to) RMB 10 million, and annual sales of sugar more than (equal to) RMB 450 million;

Enterprises engaged in the processing trade, using sugar as the raw material.

#### **(3) Basic conditions of applicants**

Have registered in the Administration for Industry and Commerce prior to Oct. 1st, 2014, and conducted the publicity of annual reports;

During the period of 2012-2014, be with no violation records in the aspects of customs, foreign exchange, industry & commerce, tax affairs, quality inspection, social security, environmental protection, self-discipline, etc.;

Without actions violating the *Interim Measures for the Administration of Import Tariff Quotas of Agricultural Products* and the *Detailed Rules and Regulations on Application and Distribution of Import Tariff Quota of Sugar in 2014*.

#### **(4) Application materials**

Application report for import tariff quotas of agricultural products;

Application form for import tariff quotas of agricultural products;

Copy of business license for enterprise as a legal person (duplicate);

Copies of the 2014 *Certificates of Import Tariff Quotas of Agricultural Products* of sugar and the customs declaration for importation endorsed and signed by customs;

The tax clearance certificate of 2013 proofing the enterprise has paid tax by law.

The applicants with actual performance shall provide the first four items of materials above; the applicants without actual performance shall provide the first, second, third and fifth items of materials. If an applicant without actual performance was constructed and put into operation after 2009, it shall also provide the competent department with an approval document of feasibility study report of the construction project (or an approval document of project proposals) and the completion acceptance report.

**(5) Distribution of quota**

If the total quantity of import tariff quota can satisfy applications of qualified applicants, the distribution of quota shall be accordant with the application quantities of applicants;

If the total quantity of import tariff quota cannot satisfy applications of qualified applicants, applicants with actual performance can get the preferential quota, and the distribution of quota shall be accordant with actual import performance, production capacity and sales of applicants in the last year, as well as other relevant commercial standards.

## **IV. List of China's Non-agricultural Imports from Malaysia**

### **(I) Selection Method**

The non-agricultural products, such as industrial products, account for the major share of China-ASEAN trade. With the further promotion of China-ASEAN free trade area, the tariff level of products like industrial products has been significantly reduced, with relatively high degree of trade & investment liberalization and facilitation. In accordance with the ordering of sum of non-agricultural products that China imported from Malaysia in 2014, regarding the HS 2-bit code as a basis of classification, the non-agricultural products ranking at the top are selected in the first 10 Chapters; then regarding the HS 4-bit code as a basis of classification, the non-agricultural products ranking in the top 3 of the first 10 Chapters above are selected respectively.

### **(II) List of Main Non-agricultural Imports**

The list of main non-agricultural products China imported from Malaysia in 2014 is formed according to UNCOMTRADE after the top 30 kinds of products are selected on the classification bases of HS 2-bit and HS 4-bit codes. In order to facilitate Malaysia suppliers' export of relevant products to China, the supervision conditions of main non-agricultural products imported are listed in appendixes (see details in Appendix I and III).

**List of China's Main Non-agricultural Imports from Malaysia**

<b>Number</b>	<b>HS Code</b>	<b>Article Description</b>
1	85. 42	Electronic integrated circuits
2	85. 41	Diodes, transistors and similar semi-conductor devices photosensitive semi-conductor devices, including photovoltaic cells whether or not assembled in modules or made up into panels light emitting diodes mounted pie20-electric crystals
3	85. 17	Telephone sets, including Telephones for cellular networks or for other wireless networks other apparatus for the transmission or reception of voice, images or other data. including apparatus for communication in a wired or wireless network( such as a local or wide are network) .other than transmission or reception apparatus of heading 84. 43, 85. 25 .85. 27 or 85. 28
4	27 10	Petroleum oils and oils obtained from bituminous minerals, other than

		crude preparations not elsewhere specified or included, containing by weight 70% or more of petroleum oils or of oils obtained from bituminous minerals, these oils being the basic constituents of the preparations waste oils
5	27 15	Bituminous mixtures based on natural asphalt, on natural bitumen, on petroleum bitumen, on mineral tar or on mineral tar pitch ( for example, bituminous mastics, cut-backs)
6	27 11	Petroleum gases and other gaseous hydrocarbons
7	84. 71	Automatic data processing machines and units thereof magnetic or optical readers, machines for transcribing data onto data media in coded form and machines for processing such data, not elsewhere specified or included
8	84. 43	Printing machinery used for printing, cylinders and other printing components of heading 84.42 other printers Copying machines and facsimile machines , whether or not combined Part and accessories thereof
9	84. 73	Parts and accessories ( other than covers, carrying cases and the like ) suitable for use solely or principally with machines of headings No.. 84. 69 to 84. 72
10	40 05	Compounded rubber, unvulcanized, in primary forms or in plates, sheets or strip
11	40 01	Natural rubber, balata, gutta-percha, guayule, chicle and similar natural gums, in primary forms or in plates, sheets or strip
12	40 14	Hygienic or pharmaceutical articles ( including teats ) , of vulcanized rubber other than hard rubber, with or without fittings of hard rubber
13	39 01	Polymers of ethylene , in primary forms
14	39 15	Waste, parings and scrap , of plastics
15	39 03	Polymers of styrene , in primary forms
16	90. 30	Oscilloscopes, spectrum analysers and other instruments and apparatus for measuring or checking electrical quantities, excluding meters of heading No. 90. 28 instruments and apparatus for measuring or detecting alpha, beta, gamma, X-ray, cosmic or other ionizing radiations
17	90. 13	Liquid crystal devices not constituting articles provided for more specifically in other headings lasers, other than laser diodes other optical appliances and instruments, not specified or included elsewhere in this Chapter
18	90. 31	Measuring or checking instruments, appliances and machines, not specified or included elsewhere in this Chapter profile projectors
19	29 02	Cyclic hydrocarbons
20	29 05	Acyclic alcohols and their halogenated, sulphonated, nitrated or nitrosated derivatives
21	29 09	Ethers, ether-alcohols, ether-phenols, ether-alcohol-phenols, alcohol

		peroxides, ether peroxides, ketone peroxides ( whether or not chemically defined) , and their hatogenated , sulphonated, nitrated or nitrosated derivatives
22	26 01	Iron ores and concentrates, including roasted iron pyrites
23	26 06	Aluminium ores and concentrate
24	26 02	Manganese ores and concentrates, including fermgintyus manganese ores and concentrates with a manganese content of 20% or more, calculated on the dry weight
25	74 04	Copper waste and scrap
26	74 10	Copper foil ( whether or not printed or backed with paper, paperboard , plastics or similar backing materials) of a thickness ( excluding any backing) not exceeding 15mm
27	74 08	Copper wire

## V . Process Management of China’s Imports from Malaysia

According to relevant laws and regulations of the State Administration for Quality Supervision and Inspection and Quarantine (AQSIQ) and the General Administration of Customs, the products that China imports from Malaysia shall be subject to inspection and quarantine, and these imported goods can enter into the domestic market only after passing the supervision of customs.

### (I) Inspection & Quarantine

During the entry inspection declaration, the inspection form for entry goods shall be filled in, and relevant documents such as the contracts, invoices and bills of lading shall be provided according to the *Provisions of Entry-Exit Inspection and Quarantine Declaration*. In addition, relevant documents shall be provided according to requirements in case of the following conditions.

1. Relevant certificates shall be provided for goods subject to safety quality licensing and sanitary registration, or required to be approved and reviewed.

2. For goods requiring quality inspection, foreign quality certificates or quality guarantees, product use instructions as well as relevant standards and technical data shall be provided; for goods delivered with samples, the reference samples must be attached; for goods settled accounts per grade or conditioned weight, an application of weight survey shall be submitted in the meantime.

3. During the entry inspection declaration for waste, the *Approval Certificate for Imported Waste* signed and issued by national environmental protection departments, the certificate for pre-shipment inspection signed and issued by authorized inspection agencies, etc. shall be provided.

4. For goods applying for damage survey, relevant documents which can prove the situation of damage, such as the damage report of tallying, business records of railways, air traffic accident reports or marine accident reports, shall also be provided.

5. For goods applying for weight (quantity) survey, the detailed list of weight, the list of tallying, etc. shall be also provided.

6. For goods through acceptance of receiving and using departments or tested by other units, the acceptance report or test results, the detailed list of weight, etc. shall be attached with the goods.

7. International travelers entering in the country shall fill in the quarantine declaration form on entry.

8. For animals and plants as well as corresponding products entering in the country, the trade contracts, invoices and certificates of origins shall be provided, and meanwhile, the official quarantine certificate of exporting countries or regions also must be provided; For those required to transact the approval procedures of entry quarantine, the entry quarantine permits for animals and plants shall also be provided.

9. During the inspection declaration of transited animals and plants as well as corresponding products, waybills and quarantine certificates officially provided by the exporting countries or regions shall be held; when transiting animals, transit permits for animals and plants signed and issued by the State Administration of Inspection and Quarantine shall also be submitted.

10. During the entry inspection declaration for transportation and containers, quarantine certificates shall be provided, and health conditions of relevant personnel shall be declared.

11. Entry passengers and traffic personnel carrying companion animals shall provide the quarantine certificate for entry animals and the vaccination certificate.

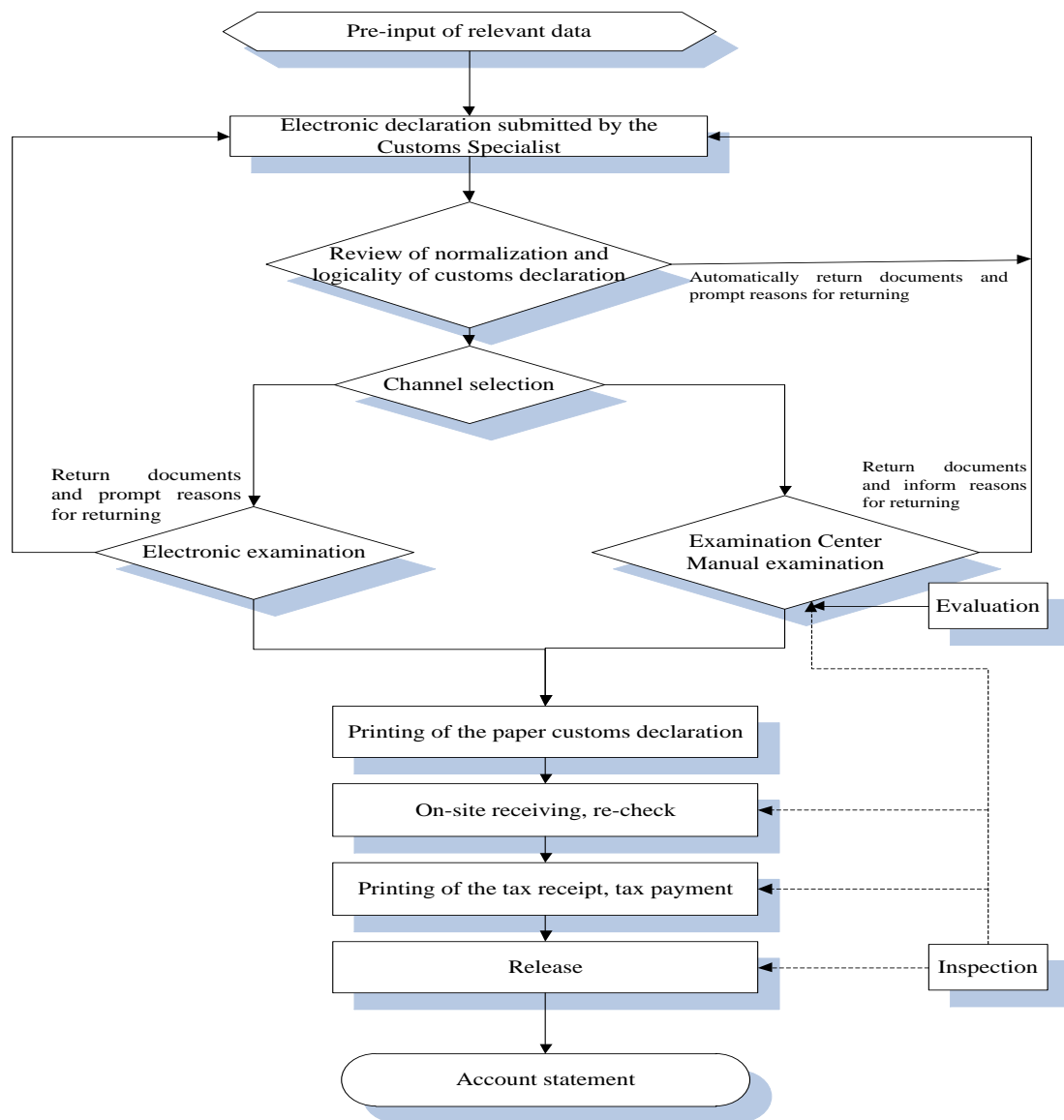
12. For articles banned from entry but need entry due to special requirements such as scientific research, the certificate of special permission signed and issued by the State Administration of Inspection and Quarantine must be provided.

13. For the entry of special articles, relevant approval documents or specified documents shall be provided.



## **(II) Customs Clearance**

The procedure of customs clearance for China's imported products is composed of five basic links, including declaration, inspection, taxation, release and clearance. Declaration refers to the behaviors that a consignee or his agent of imported goods submits the verification certificate to customs and applies for the transaction of customs affairs. Inspection refers to the checks conducted by customs according to laws to the imported goods declared by the declarant, so as to confirm the conformity of documents, certificates and goods, check if there is any violation of laws and if the entry is legal, and prepare conditions for the next customs clearance procedure. Taxation means that customs charge the tariff for imported goods and the taxes for imported links according to relevant national policies, laws and regulations, including tariff classification, application of the tariff rate and import linkage tax rate, approval and determination of the duty-paying value, calculation and payment of taxes. Release is the last link of on-site operations of port customs supervision. Clearance means that customs implement inspections on the goods requiring follow-up management after the port release within a specified period, and deal with the goods requiring supplementary certificates and payment for overdue taxes till all of customs supervision procedures are fully completed. The flow chart of China's product import is as follow:



For the customs clearance of agricultural products subject to import quotas management, the *Certificates of Import Tariff Quotas of Agricultural Products* shall be submitted according to relevant provisions of the *Interim Measures for the Administration of Import Tariff Quotas of Agricultural Products* (No. 4 Decree of the Ministry of Commerce and the State Development Planning Commission [2003]).

### (III) Cooperation between customs and inspection & quarantine departments

According to the *Notification on the Comprehensive Promotion of Cooperation between Customs and Inspection & Quarantine Departments Issued by the General*

*Administration of Customs and the State Administration for Quality Supervision and Inspection and Quarantine* (No.161 Decree of the General Administration of Customs and AQSIQ [2014]), since Aug. 1st, 2014, the “3 Ones” of cooperation between customs and inspection & quarantine departments has been comprehensively promoted to all directly competent customs and inspection & quarantine departments, all sites of customs clearance, and all goods and articles requiring customs declaration and inspection declaration pursuant to the laws, so as to achieve the maximum utilization of facilitation measures provided by customs and inspection & quarantine departments to benefit enterprises.

The “3 Ones” of cooperation between customs and inspection & quarantine departments refers to the “one-off declaration, one-off inspection and one-off release”. The “one-off declaration” refers to “one-off input and respective declarations”, which means that an enterprise only needs to input data for once, and the data will be respectively sent to customs and inspection & quarantine departments; the “one-off inspection” refers to “one-off unpacking that customs and inspection & quarantine departments jointly implement check/inspection & quarantine pursuant to the laws”, which means that both parties of customs and inspection & quarantine departments can jointly implement check/inspection & quarantine to the same batch of goods as required according to their different responsibilities and pursuant to the laws; the “one-off release” refers to “networking check and release of customs and inspection & quarantine departments”, which means that customs and inspection & quarantine departments respectively send the check and release information for goods arriving at ports, and the enterprise can transact procedures for taking delivery of goods by the check and release information of customs and inspection & quarantine departments.

# Appendix I

## List of Supervision Requirements of Customs

License or Official Document Codes	License or Official Document Names
1	Import Licence of the People's Republic of China
2	Import License for Dual-use Items and Technologies
3	Export License for Dual-use Items and Technologies
4	Export Licence of the People's Republic of China
5	Temporary Textiles Export Licence of the People's Republic of China
6	Prohibited Import of Used Mechanical and Electric Products
7	Automatic Import License of the People's Republic of China
8	Export Forbidden Items
9	Import Forbidden Items
A	Certificate of Inspection for Goods Inward
B	Certificate of Inspection for Goods Outward
D	Certificate of Inspection for Goods Inward(Used for Rough Diamonds)
E	Export Permit for Endangered Wild Animals
F	Import Permit for Endangered Wild Animals
G	Export License for Dual-use Items and Technologies(Directionality)
I	Psychotropic Drug Import and Export License
J	The export license or the people's Bank of China import approval of gold products
O	Automatic Import License (Used and New Mechanical and Electrical Products)
P	Certificate of Approval for Import of Wastes
Q	Drug Import Customs Clearance
S	Certificate for the Import and Export of Pesticides
T	License of Transporting Cash in Foreign Currency Inward and Outward
W	Import Authorization for Narcotic Drugs
X	Clearance Notification for Environmental Management on Import/Export of Toxic Chemicals
Z	Certificate of of Approval for the Import of Audio and Video Products or Claimed Programs
e	Certificate of Cotton Import Tariff Quota at Out-Quota Preferential Duty Rate
s	Certificate of the Use Identification of Goods under ITA Tax
t	Import Tariff Quota Certificate
v	Automatic Import License of the People's Republic of China (Processing Trade)
x	Export Licence of the People's Republic of China (Processing Trade)
y	Export Licence of the People's Republic of China (Small Amount of Border Trade )

## Appendix II

### Supervision Requirements of Customs of Main Agricultural Imports

HS Code	Supervision Requirements	Article Description
<b>15 11</b>		<b>Palm oil and its fractions, whether or not refined, but not chemically modified</b>
1511 1000	7AB	-Crude oil
		-Other
1511 9010	7AB	-Palm olein( melting point 19 ℃ - 24℃ )
1511 9020		-Palm stearin (melting point 44℃ - 56℃ )
1511 9020 暂 01	7AB	Solid plam stearin ( melting point 50℃- 56℃, not chemically modified)
1511 9020 90	AB	Palm Stearin ( melting point 44℃ - 50℃ , not chemically modified)
1511 9090	7AB	-Other
<b>15 13</b>		<b>Coconut ( copra ) , palm kernel or babassu oil and fractions thereof, whether or not refined, but not chemically modified</b>
		-Coconut (copra) oil and its fractions
1513 1100	AB	--Crude oil
1513 1900	AB	-Other
		-Palm kernel or babassu oil and fractions thereof-
1513 2100	AB	--Crude oil
1513 2900	AB	-Other
<b>19 01</b>		<b>Malt extract food preparations of flour, groats, meal, starch or malt extract, not containing cocoa or containing less than 40% by weight of cocoa calculated on a totally defatted basis, not elsewhere specified or included; food preparations of goods of headings No. 04 01 to 04 04, not containing cocoa or containing less than 5%by weight of cocoa calculated on a totally defatted basis, not elsewhere specified or included</b>
		-Preparations for infant use , put up for retail sale
1901 1010 暂	7AB	Powdered formulas
1901 1090 暂	AB	Other
1901 2000	AB	-Mixes and cloughs for the preparation of bakers' wares of heading No. 19 05
1901 9000	AB	-Other
<b>14 04</b>		<b>Vegetable products not elsewhere specified or included</b>

1404 2000	AB	-Cotton linters
		-Other
1404 9010	AB	-Raw Vegetable materials of a kind used primarily in dyeing or tanning
1404 9090	AB	-Other
<b>21 06</b>		<b>Food preparations not elsewhere specified or included</b>
2106 1000	AB	-Protein concentrates and textured Protein substances
		-Other
2106 9010	AB	-Beverage bases
2106 9020	AB	---Compound alcoholic preparations of a kind used for the manufacture of beverages
2106 9030		-royal jelly, put up as tonic essences
2106 9030 10	ABFE	Royal jelly, put up as tonic essences containing composition of endangered plants
2106 9030 90	AB	Other royal jelly, put up as tonic essences
2106 9040	AB	---Coconut juice
2106 9050		-Seal oil capsules
2106 9050 10	ABEF	Endangered seal oil capsules
2106 9050 90	AB	Other seal oil capsules
2106 9090		-Other
2106 9090 暂 01	AB	Milk protein partial hydrolysate formula, milk protein hydrolysis amino acid formula special depth formula, infant milk powder
2106 9090 10	ABEF	Other food preparations containing composition of endangered plants, not elsewhere specified or included
2106 9090 90	AB	Other food preparations, not elsewhere specified or included
<b>19 05</b>		<b>Bread, pastry, cakes, biscuits and other bakers' wares, whether or not containing cocoa communion wafers , empty cachets of a kind suitable for pharmaceutical use, seating wafers, rice paper and similar products</b>
1905 1000	AB	-Crispbread
1905 2000	AB	-C7ingerbread and the like
		-Sweet biscuits; waffles and wafers
1905 3100	AB	-Sweet biscuits
1905 3200	AB	-Waffles and wafers
1905 4000	AB	-Rusks, toasted bread and similar toasted products
1905 9000	AB	-Other
<b>18 04</b>		<b>Cocoa butter, fat and oil</b>
1804 0000		Cocoa butter fat and oil
1804 0000 10	AB	Cocoa fat
1804 0000 90	AB	Cocoa oil

<b>21 01</b>		<b>Extracts, essences and concentrates, of coffee, tea or mate and preparations with a basis of these products or with a basis of coffee, tea or mate roasted chicory and other roasted coffee substitutes, and extracts, essences and concentrates thereof</b>
		-Extracts, essences and concentrates of coffee, and preparations with a basis of these extracts, essences or concentrates or with a basis of coffee
2101 1100	AB	-Extracts, essences and concentrates
2101 1200	AB	-Preparations with a basis of extracts, essences or concentrates or with a basis of coffee
2101 2000	AB	-Extracts, essences and concentrates, of tea or mate, and preparations with a basis of these extracts, essences or concentrates or with a basis of tea or mate
2101 3000	AB	-Roasted Chicory and Other roasted Coffee substitutes, and extracts, essences and concentrates thereof
<b>15 16</b>		<b>Animal or vegetable fats and oil and fractions thereof, partly or wholly hydrogenated, inter-esterified, reesterified or elaidinized, whether or not refined, but not further prepared</b>
1516 1000	AB	-Animal Fats and oils and fractions thereof
1516 2000	AB	-Vegetable fats and oils and fractions thereof
<b>18 05</b>		<b>Cocoa powder, not containing added sugar or other sweetening matter</b>
1805 0000	AB	Cocoa powder, not containing added sugar or other sweetening matter
<b>15 17</b>		<b>Margarine edible mixtures or preparations of animal or vegetable fats or oils or of fractions of different fats or oils of this Chapter, other than edible fats or oils or their fractions of heading No.15 16</b>
1517 1000	AB	-Margarine , excluding liquid margarine
		-other
1517 9010		-Shortening
1517 9010 01	AB	Shortening made of animal grease ( other than edible fats or oils or their fractions of heading No. 1516)
1517 9010 90	AB	Shortening made of plant oil( other than edible fats or oils or their fractions of heading No. 1516)
1517 9090		-Other
1517 9090 01	AB	edible mixtures or preparations of animal fats or oil or of fractions ( Other than edible fats or oil or their fractions of heading No. 15 16)
1517 9090 90	AB	edible mixtures or Preparations of vegetable fats or oil or of fractions ( Other than edible fats or oil or their fractions

		of heading No.15 16)
<b>09 04</b>		<b>Pepper of the genus Piper dried or crushed or ground fruits of the genus Capsicum or of the genus Pimenta</b>
		-Pepper
0904 1100		-Neither crushed Nor ground
0904 1100 10	QAB	Piper longum
0904 1100 90	AB	Pepper of the genus Piper, neither crushed Nor ground( other than piper longum)
0904 1200	AB	--crushed or ground
		- Chili
0904 2100	AB	-Dried neither crushed Nor ground
0904 2200	AB	--crushed or ground
<b>18 03</b>		<b>Cocoa paste, whether or not defatted</b>
1803 1000	AB	-not defatted
1803 2000	AB	-Wholly or partly defatted
<b>17 04</b>		<b>Sugar confectionery ( including white chocolate ), not containing cocoa</b>
1704 1000	AB	-Chewing Gum, whether or not sugarcoated
1704 9000	AB	-Other
<b>23 06</b>		<b>Oil-Cake and other solid residues, whether or not ground or in the form of pellets, resulting from the extraction of vegetable fats or oils , other than those of heading No. 23 04 or 23 05</b>
2306 1000	AB	-of Cotton Seeds
2306 2000	AB	-of Linseed
2306 3000	AB	-of sunflower Seeds
		-of rape or colza Seeds
2306 4100	AB	-of Low erucic acid rape or colza Seeds
2306 4900	AB	-Other
2306 5000	AB	-of Coconut or copra
2306 6000		-of Palm nuts or kernels
2306 6000 10	ABEF	Endangered oil-cake and Other solid residues of palm nuts or derneln ( other than those of heading No. 23 04 or 23 05 )
2306 6000 90	AB	Other oil-cake and other solid residues of palm nuts or derneln ( other than chose of heading No. 23 04 or 23 05)
2306 9000	AB	-Other
<b>22 02</b>		<b>Waters, including mineral waters and aerated waters, containing added sugar or other sweetening matter or flavoured, and other Non-alcoholic beverages, not including fruit or vegetable juices of heading No. 20 09</b>



2202 1000		-waters, including Mineral waters and aerated waters, containing added sugar or other sweetening matter or flavoured
2202 1000 10	ABEF	Waters containing added sugar or other sweetening matter or flavoured of endangered animals and plant ( including mineral waters and aerated water)
2202 1000 90	AB	Other waters , containing added sugar or other sweetening matter or flavoured ( including mineral waters and aerated waters)
2202 9000		-Other
2202 9000 11	ABEF	Non-alcoholic beverages, in bulk, containing endangered animals and plants compositions ( Other than fruit juices and vegetable juices of heading No. 2009)
2202 9000 19	AB	Other Non-alcoholic beverages, in bulk ( Other than fruit juices and vegetable juices of heading No. 2009 )
2202 9000 91	ABEF	Non-alcoholic beverages, with other packing containing compositions of endangered animals and plants (other than fruit juices and vegetable juices of heading No. 2009)
2202 9000 99	AB	Non-alcoholic beverages, with other packing ( other than fruit juices and vegetable juices of heading No. 2009 )
<b>19 04</b>		<b>Prepared foods obtained by the swelling or roasting of cereals or cereal products ( for example, corn flakes ); cereals ( other than maize ( corn ) in grain form or in the form of flakes or other worked grains ( except flour, groats and meal) , precooked or otherwise prepared, not elsewhere specified or included</b>
1904 1000	AB	-Prepared foods obtained by the swelling or roasting of cereals or cereal products
1904 2000	AB	-Prepared foods obtained from unroasted cereal flakes or from mixtures of unroasted cereal flakes and roasted cereal flakes or swelled cereals
1904 3000	AB	-Bulgur wheat
1904 9000	AB	-Other
<b>15 18</b>		<b>Animal or vegetable fats and oils and fractions thereof, boiled, oxidized, dehydrated, sulphurized, blown, polymerized by heat in vacuum or in inert gas or otherwise chemically modified, excluding those of heading No. 15 16 inedible mixtures or preparations of animal or vegetable fats or oils or of fractions of different fats or oils of this Chapter, not elsewhere specified or included</b>
1518 0000	AB	Animal or vegetable fats and oils and fractions thereof, boiled, oxidized, dehydrated, sulphurized, blown,

		polymerized by heat in vacuum or in inert gas or otherwise chemically modified, excluding those of heading No. 15 16 inedible mixtures or preparations of animal or vegetable fats or oils or of fractions of different fats or oils of this Chapter, not elsewhere specified or included
<b>08 04</b>		<b>Dates, figs, pineapples, avocados, guavas, mangoes and mangosteens , fresh or dried</b>
0804 1000	AB	-Dates
0804 2000	AB	-Figs
0804 3000		-Pineapples
0804 3000 01	AB	Pineapples, fresh
0804 3000 90	AB	Pineapples, dried
0804 4000	AB	-Avocados
		-Guavas, mangoes and mangosteens
0804 5010		---Guavas
0804 5010 01	AB	Guavas, fresh
0804 5010 90	AB	Guavas, dried
0804 5020		-Mangoes
0804 5020 01	AB	Mangoes, fresh
0804 5020 90	AB	Mangoes, dried
0804 5030	AB	-mangosteens
<b>15 20</b>		<b>Glycerol, crude glycerol waters and glycerol lyes</b>
1520 0000	AB	Glycerol, crude glycerol waters and glycerol lyes
<b>14 01</b>		<b>Vegetable materials of a kind used primarily for plaiting ( for example, bamboos, rattans, reeds, rushes, osier, raffia, cleaned, bleached or dyed cereal straw, and lime bark)</b>
1401 1000		-Bamboos
1401 1000 10	ABE	Acidosasa chinensis ( Raphia vinijera )
1401 1000 90	AB	Other bamboos
1401 2000		-Rattans
1401 2000 10	ABFE	Endangered rattans
1401 2000 90	AB	Other rattans
		-Other
1401 9010	AB	---Cereal straw ( Other than wheat straw)
1401 9020	AB	-Reeds
		-Rushes
1401 9031	AB4xy	-mat rush
1401 9039	AB	-Other
1401 9090	AB	-Other
<b>09 01</b>		<b>Coffee, whether or not roasted or decaffeinated coffee husks and skins coffee substitutes containing coffee in</b>

		<b>any proportion</b>
		-Coffee , not roasted
0901 1100	AB	--not decaffeinated
0901 1200	AB	-Decaffeinated
		-Coffee , roasted
0901 2100	AB	-not decaffeinated
0901 2200	AB	-Decaffeinated
		-Other
0901 9010	AB	---Coffee husks and skins
0901 9020	AB	---Coffee substitutes containing coffee
<b>21 03</b>		<b>Sauces and preparations therefor mixed condiments and mixes seasonings mustard flour and meal and prepared mustard</b>
2103 1000 暂	AB	-soya sauce
2103 2000	AB	-Tomato ketchup and Other Tomato sauces
2103 3000	AB	-Mustard flour and meal and Prepared Mustard
		-Other
2103 9010	AB	---Gourmet powder
2103 9020	AB	-Aromatic bitters, 44 2% - 49 2% of which is alcoholic strength by volume 1.5% -6% of which is spices and various ingredients by weight and 4% - 10% of which is sugar by weight
2103 9090	AB	-Other
<b>03 03</b>		<b>Fish, frozen, excluding fish fillets and other fish meat of heading No. 03 04</b>
		-Salmonidae , excluding Livers and roes
0303 1100	AB	-Sockeye salmon ( red salmon ) ( Oncorhynchus nerka )
0303 1200	AB	-Other Pacific salmon ( Oncorhynchus gorbuscha , Oncorhynchus keta, Oncorhynchus tshawytscha, Oncorhynchus kisutch, Oncorhynchus masou and Oncorhynchus thodurus)
0303 1300	AB	-Atlantic salmon ( Salmo salar ) and Danube salmon
0303 1400	AB	-Trout ( Salmo trutta, Oncorhynchus mykiss, Oncorhynchus clarki, Oncorhynchus aguabonita, Oncorhynchus gilae, Oncorhynchus apache and Oncorhynchus chrysogaster)
0303 1900		-Other
0303 1900 10	ABE	Chuan-shan taimen (hucho taimen) ( excluding liver and roes ) frozen
0303 1900 20	ABE	Qinting lenok ( brachymystax lenok) ( excluding liver and roes) frozen
0303 1900 90	AB	Other salmonidae ( excluding liver and roes) frozen ( excluding livers and roes)

0303 2300	AB	-Tilapia( <i>Oreochromis</i> spp. )
0303 2400	AB	--Catfish( <i>Pangasius</i> spp., <i>Silurus</i> spp., <i>Clarias</i> spp.)
0303 2500	AB	--Carp ( <i>Cyprinus carpio</i> , <i>Carassius carassius</i> , <i>Ctenopharyngodon idellus</i> , <i>Hypophthalmichthys</i> spp. , <i>Cirrhinus</i> spp. , <i>Mylopharyngodon piceus</i> )
0303 2600		-Eel( <i>Anguilla</i> spp. )
0303 2600 10	ABE	Marbled eels , frozen ( excluding livers and roes )
0303 2600 20	ABEF	European eels frozen ( excluding livers and roes )
0303 2600 90	AB	Other eels ( <i>anguilla</i> spp. ) , frozen ( excluding livers and roes)
0303 2900		-Other
0303 2900 01	AB	Nile perch ( <i>Lates niloticus</i> ) , frozen ( excluding livers and roes)
0303 2900 90	AB	Snakeheads ( <i>Channa</i> spp. ) , frozen ( excluding livers and roes)
		-Flatfish ( <i>Pleuroneidae</i> , <i>Bothidae</i> , <i>Cynoglossidae</i> , <i>Soleidae</i> , <i>Scophthalmidae</i> and <i>Citharidae</i> ) excluding livers and roes
		-Halibut ( <i>Reinhardtius hippoglossoides</i> , <i>Hippoglossus hippoglossus</i> , <i>Hippoglossus stenolepis</i> )
0303 3110	AB	---Greenland Halibut
0303 3190	AB	-Other
0303 3200	AB	-Plaice ( <i>Pleuroneaes platessa</i> )
0303 3300	AB	-Sole ( <i>Solea</i> spp. )
0303 3400	AB	-Turbot ( <i>Psetta maxima</i> )
0303 3900	AB	-Other
		-Tunas ( of the genus <i>Thunnus</i> ) ( tuna genus ) , skipjack or striped bonito or belted bonito ( oceanic bonito ) excluding livers and roes
0303 4100	AB	-Albacore or longfinned tunas ( <i>Thunnus alalunga</i> )
0303 4200	AB	-Yellowfin tunas ( <i>Thunnus albacares</i> )
0303 4300	AB	-Skipjack or belted bonito
0303 4400	ABU	-Bigeye tunas( <i>Thunnus obesus</i> )
		-Atlantic and pacific bluefin tunas ( <i>Thunnus thynnus</i> , <i>Thunnus orientalis</i> )
0303 4510	ABU	-Atlantic bluefin tunas
0303 4520	AB	-pacific bluefin tunas
0303 4600	AB	-Southern bluefin tunas ( <i>Thunnus maccoyii</i> )
0303 4900	AB	-Other
0303 5100	AB	-Herrings ( <i>Clupea harengus</i> , <i>Clupea pallasii</i> )
0303 5300	AB	-sardines ( <i>Sardina pilchardus</i> , <i>Sardinops</i> spp. ) , sardinella ( <i>Sardinella</i> spp. ) , bristling or sprats ( <i>Sprattus sprattus</i> )

0303 5400	AB	-Mackerel ( <i>Scomber scombrus</i> , <i>Scomber australasicus</i> , <i>Scomber japonicus</i> )
0303 5500	AB	-jack and horse mackerel( <i>Trachurus</i> spp. )
0303 5600	AB	--Cohia ( <i>Rachycentron canadum</i> )
0303 5700	ABU	-Swordfish ( <i>Xiphias gladius</i> )
		-Fish of the families bregmacerotidae euclichthyidae gadidae ruacouridae melanonidae merluccidae moridae and muraenolepididae, excluding livers and roes
0303 6300	AB	--Cod ( <i>Cadus morhua</i> , <i>Gadus ogac</i> , <i>Gadus macrocephalus</i> )
0303 6400	AB	-Haddock ( <i>Melanogrammus aeglefinus</i> )
0303 6500	AB	--Coalfish( <i>Pollachius virens</i> )
0303 6600	AB	-Hake( <i>Merluccius</i> spp., <i>Urophycis</i> spp. )
0303 6700	AB	-Alaska Pollack ( <i>Theragra chalcogramma</i> )
0303 6800	AB	-Blue whiings ( <i>Micromesistius poutassou</i> , <i>Micromesistius australis</i> )
0303 6900	AB	-Other
		-other fish , excluding Livers and roes
0303 8100		-Dogfish and Other sharks
0303 8100 10	ABEF	Whale shark ( <i>Rhincodon</i> ) , man-eating shark ( <i>Carchodon</i> ) basking shark ( <i>Cetorhinus</i> ) ( excluding livers and roes ) , frozen
0303 8100 90	AB	Other dogfish and other sharks ( excluding livers and roes ) , frozen
0303 8200	AB	-Rays and skates( <i>Rajidae</i> )
0303 8300	ABU	-Toothfish ( <i>Dissostichus</i> spp. )
0303 8400	AB	-Seahass ( <i>Dicentrarchus</i> spp. )
		-Other
0303 8910	AB	-Scabber fish ( <i>Trichurus</i> )
0303 8920	AB	-Yellow croaker( <i>Pseudosciaena</i> )
0303 8930	AB	-Tilapia
0303 8990		-Other
0303 8990 01	AB	Other perch , frozen ( excluding livers and roes )
0303 8990 10	ABFE	Other endangered fish, frozen ( excluding livers and roes )
0303 8990 90	AB	Other fish frozen ( excluding livers and roes )
0303 9000		-Livers and roes
0303 9000 10	ABEF	Livers and roes of endangered fish , frozen
0303 9000 90	AB	Other livers and roes frozen
<b>04 10</b>		<b>Edible products of animal origin, not elsewhere specified or included</b>
0410 0010	AB	-Salanganes' nests
		-Bee products
0410 0041	AB	-Pure royal jelly

0410 0042	AB	-Pure royal jelly, in powder
0410 0043	AB	-Bee pollen
0410 0049	AB	-Other
0410 0090		-Other
0410 0090 10	ABFE	Other edible products of endangered wild animals origin, not elsewhere specified or included
0410 0090 90	AB	Other edible products of animals origin , not elsewhere
<b>23 01</b>		<b>Flours , meals and pellets, of meat or meat offal, of fish or of crustaceans, molluscs or other aquatic invertebrates, unit for human consumption greaves</b>
		-Flours, meals and pellets, of meat or meat offal greaves
		-Flours and meals, of meat bones
2301 1011	AB	-Of bovine and sheep
2301 1019	AB	-Other
2301 1020	AB	---Greaves
2301 1090	AB	-Other
		-Flours meals and pellets , of fish or of crustaceans , molluscs or other aquatic invertebrates
2301 2010	AB	-Flours and meals of fish, of a kind used in animal feeding
2301 2090	AB	-Other
<b>08 11</b>		<b>Fruit and nuts, uncooked or cooked by steaming or boiling in water, frozen, whether or not containing added sugar or other sweetening matter</b>
0811 1000	AB	-Strawberries
0811 2000	AB	-Raspberries, blackberries, mulberries, loganberries, black, white or red currants and gooseberries
		-Other
0811 9010	AB	---Chestnuts, in shell
0811 9090		-Other
0811 9090 10	ABE	Ginkgo, frozen
0811 9090 21	ABE	Korean pine-nuts, shelled frozen ( whether or not shelled or peeled)
0811 9090 22	ABEF	Other endangered pine-nuts, shelled ( whether or not shelled or peeled)
0811 9090 30	ABE	Semen torreyae , frozen
0811 9090 40	ABE	Fruit of wingfruit elaeagus ( Elaeagus mollis Diels) , frozen
0811 9090 50	ABEF	Lodoicea maldivica nut frozen
0811 9090 90	AB	Other fruit and nuts , frozen , not elsewhere specified or

		included
<b>23 09</b>		<b>Preparations of a kind used in animal feeding</b>
		-Dog or cat Food, put up for retail sale
2309 1010	AB	---in airtight containers
2309 1090	AB	-Other
		-Other
2309 9010	AB	-Preparations for use in making the complete feeds or supplementary feeds
2309 9090	AB	-Other
<b>52 02</b>		<b>Cotton waste ( including yarn waste and garnetted stock )</b>
5202 1000	AP	-Yarn Waste ( including thread Waste)
		-Other
5202 9100	ABP	--Garnetted stock
5202 9900	ABP	-Other
<b>18 06</b>		<b>Chocolate and other food preparations containing cocoa</b>
1806 1000	AB	-Cocoa powder, containing added sugar or Other sweetening matter
1806 2000	AB	-Other Preparations in blocks, slabs or bars Weighing more than 2kg or in liquid, paste , powder, granular or other bulk form in containers or immediate packings, of a content exceeding 2kg
		-Other in blocks, slabs or bars
1806 3100	AB	- Filled
1806 3200	AB	-not Filled
1806 9000	AB	-Other

## Appendix III

### Supervision Requirements of Customs of Main Non-agricultural Imports

HS Code	Supervision Requirements	Article Description
<b>85. 42</b>		<b>Electronic integrated circuits</b>
		-electronic integrated circuits
8542. 3100		-Processors and controllers, whether or not combined with memories, converter, logic circuit, amplifier, clock and timing circuit or other circuit
8542. 3200		-Memories
8542. 3300		-amplifier
8542. 3900		-Other
8542. 9000		-Parts
<b>85. 41</b>		<b>Diodes, transistors and similar semi-conductor devices photosensitive semi-conductor devices, including photovoltaic cells whether or not assembled in modules or made up into panels light emitting diodes mounted piezo-electric crystals</b>
8541. 1000		-Diodes, Other than photosensitive or Light emitting diodes
		-Transistors , Other than photosensitive Transistors
8541. 2100		-with a dissipation rate of less than I W
8541. 2900		-Other
8541. 3000		-Thyristors, diacs and triacs, Other than photosensitive devices
		-Photosensitive semiconductor devices, including photovoltaic cells whether or not assembled in modules or made up into panels light emitting diodes
8541. 4010		-Light emitting diodes
8541. 4020		-Solar cells
8541. 4090		-Other
8541. 5000		-Other Semiconductor devices
8541. 6000		-mounted Piezo-Electric Crystals
8541. 9000		-Parts
<b>85. 17</b>		<b>Telephone sets, including telephones for cellular networks or for other wireless networks other apparatus for the transmission or reception of voice, images or other data. including apparatus for communication in a wired or wireless network( such as a local or wide are network). other than transmission or reception apparatus of heading 84. 43 , 85. 25 .85. 27 0r 85. 28</b>



		-Telephone sets, including Telephones for cellular networks or for other wireless networks
8517. 1100		-Line Telephone sets with cordless handsets
8517. 1100 10	AM	Cordless encrypting Telephones
8517. 1100 90	A	Other cordless Telephones
		-Telephones for cellular net works or for Other wireless networks
8517. 1210		-Wireless Telephone handsets ( including vehicle installed )
8517. 1210 11	AO	Full set of parts of GSM digital wireless Telephones handheld
8517. 1210 19	AO	Other CSM digital wireless Telephones handsets
8517. 1210 21	AO	Full set of parts of CDMA digital wireless phones handheld
8517. 1210 29	AO	Other CDMA wireless telephones handheld
8517. 1210 90	AO	Other wireless Telephones handsets ( including vehicle installed)
8517. 1220		-Walkie-talkie
8517. 1290	0	-Other
8517. 1800		-Other
8517. 1800 10	AM	Other encrypting Telephones
8517. 1800 90	A	Other Telephones
		-Other apparatus for transmission or reception of voice , images or other data including apparatus for communication in a wired or wireless network ( such as a local or wide area network)
		-base stations
8517. 6110		-Mobile communication base station
8517. 6110 10	0	CSM mobile communication base station
8517. 6110 20	0	CDMA mobile communication base station
8517. 6110 30		TACS mobile communication base station
8517. 6110 90	0	Other mobile communication base station
8517. 6190	0	-Other
		-machines for the reception, conversion and transmission or regeneration of voice images or other data , including switching and routing apparatus
		-Digital program - controlled telephonic or telephonic switching apparatus
8517. 6211		-Public telephonic switching apparatus, toll telephonic switching apparatus telegraphic switching apparatus
8517. 6212	0	-Mobile communication switching system

8517. 6219	A	-Other telephonic switching apparatus
		-optical communication equipments
8517. 6221	0	-optical Line Terminal equipments and pulse code modulation equipments
8517. 6222	0	-Optical transmission equipments for wave-division multiplexing
8517. 6229		-Other
8517. 6229 10	AMO	Optical communication encrypting routers
8517. 6229 90	OA	Other optical communication equipment
		-Other telecommunication apparatus for digit Line system
8517. 6231		----communication network synchronization equipments
8517. 6232		-Ethernet exchangers
8517. 6232 10	M	Non - optical communication encrypting ethernet exchangers
8517. 6232 90		Other Non - optical communication ethernet exchangers
8517. 6233	A	----IP Telephone signal Converters
8517. 6234	A	-Modem
8517. 6285	A	-Hubs
8517. 6236		-Routers
8517. 6236 10	M	Non - optical communication encrypting routers
8517. 6236 90		Other routers
8517. 6237		-wired network interface Card
8517. 6239	0	-Other
		-Other
8517. 6292		-Wireless network interface cards
8517. 6293		-fixed Wireless access station
8517. 6294		-Wireless headset
8517. 6299		-Other
		-Other
8517. 6910		-Other equipments in a Wireless network
8517. 6910 01	As	Portable receivers for calling ,promoting and paging
8517. 6910 90	AO	Other wireless communication equipments
8517. 6990		-Other equipments in a wired network
		-Parts
8517. 7010		-of Digital program-controlled telephonic or telegraphic switching appootus
8517. 7020		-Of optical line terminal equipments and pulse code modulation equipments
8517. 7030		-Of wireless telephone handsets ( other than aerials)
8517. 7040		-of walkle-talkie ( Other than aerials )
8517. 7060		-Laser receiving and transmitting unit of optical communication equipments

8517. 7070		-Antenna and parts thereof of heading No.. 85. 17
8517. 7070 01		Antenna for wireless Telephones and telegrams
8517. 7070 90		Other antenna and parts thereof of heading No. 85. 17
8517. 7090		-Other
<b>27 10</b>		<b>Petroleum oils and oils obtained from bituminous minerals, other than crude preparations not elsewhere specified or included, containing by weight 70% or more of petroleum oils or of oils obtained from bituminous minerals, these oils being the basic constituents of the preparations waste oils</b>
		-Petroleum oils and oils obtained from Bituminous minerals ( other than crude) and Preparations not elsewhere specified or included, containing by weight 70% or more of petroleum oils or of oils obtained from bituminous minerals, these oils being the basic constituents of the preparations excluding biodiesel other than waste oils
		-Light oils and Preparations
2710 1210		-Motor gasoline aviation gasoline
2710 121001	47ABvy	Motor gasoline , aviation gasoline, excluding biodiesel ( containing lead $\leq 0.013$ L/g)
2710 121002	47ABvy	Motor gasoline , aviation gasoline , excluding biodiesel ( containing lead $> 0.013$ L/g)
2710 1220	47ABvy	-Naphtha
2710 1230		-Rubber solvent, paint solvent extractive solvent
		-Other
2710 1291		-Nonene
2710 129101	4Ay	Nonene excluding biodiesel, excludingbiodiesel ( Carbon 9 isomer mixtures containing $> 90\%$ )
2710 1291 90	4Ay	Other Nonene excluding biodiesel
2710 1299		-Other
2710 129910	4Av	Mixture of isomers of isoamylene , excluding biodiesel
2710 1299 90	4Ay	Other light oils and preparations , excluding biodiesel ( containing $\geq 70\%$ by weight of oils)
		-Other
		-Kerosene distillages
2710 1911	47ABvy	-aviation Kerosene
2710 1912	47ABvy	-Lamp-Kerosene
2710 1919		-Other
2710 191910	4y	Normal paraffin hydrocarbon ( C <sub>g</sub> - C <sub>13</sub> ) , excluding biodiesel
2710 1919 90	4yAB	Other kerosene distillages oils and preparations, excluding

		biodiesel
		-Diesel oils and Other fuel oils
2710 1922	7ABv	-Fuel oils No. 5 - No. 7
2710 1923	47ABvy	-Diesel engine
2710 1923 10	47ABvy	Vehicle diesel, excluding biodiesel
2710 1923 90	47ABvy	Other diesel , excluding biodiesel
2710 1929		-Other
2710 192910	7ABv	Paraffin oils excluding biodiesel( which < 20% by volume distil < 350°C , which > 80% by volume distil<5500C )
2710 1929 90	7ABv	Other fuel oils , excluding biodiesel
		-Lubricating oils, lubricating greases and Other heavy oils
2710 1991	4Ayx	-lubricating grease
2710 1992	4Ayx	-Lubricating oils
2710 1993	4yx	-Basic oils for Lubricating oils
2710 1994	AB	-Liquid paraffin and heavy liquid paraffin
2710 1999	B	-Other
2710 2000	4Ay	-Petroleum oils and oils obtained from Bituminous minerals, other than crude preparations not elsewhere specified or included, containing by weight 70% or more of petroleum oils or of oils obtained from bituminous minerals , these oils being the basic constituents of the preparations containing biodiesel < 30% ,other than waste oils
		-Waste oils
2710 9100	9	--Containing polychlorinated biphenyls ( PCBs ) , polychlorinated terphenyls ( PCTs) or polybrominated biphenyls ( PBBs)
2710 9900	9	-Other
<b>27 15</b>		<b>Bituminous mixtures based on natural asphalt, on natural bitumen, on petroleum bitumen, on mineral tar or on mineral tar pitch ( for example, bituminous mastics, cut-backs)</b>
2715 0000		Bituminous mixtures based on natural asphalt, on natural bitumen, on petroleum bitumen on mineral tar or on mineral tar pitch ( for example, bituminous mastics, cut-hacks )
<b>27 11</b>		<b>Petroleum gases and other gaseous hydrocarbons</b>
		-Liquefied
2711 1100	4ABy	-natural gas
2711 1200	AB	-Propane
		-Butanes

2711 1310		---Liquid or liquefied-gas fuels in containers of a kind used for filling or refilling cigarette or similar lighters and of a capacity exceeding 300cm <sup>3</sup>
2711 1390		-Other
2711 1400		-Ethylene , propylene , butylene and butadiene
2711 1400 10	AB	Liquefied ethylene ,
2711 1400 90		Liquefied propylene , butylene and butadiene
		-Other
2711 1910		-Liquid or liquefied-gas fuels in containers of a kind used for filling or refilling cigarette or similar lighters and of a capacity exceeding 300cm <sup>3</sup>
2711 1990		-Other
2711 1990 10	AB	Other liquefied petroleum gases
2711 1990 90		Other liquefied gaseous hydrocar
		— In gaseous state
2711 2100	AB	-natural gas
2711 2900		-Other
2711 2900 10	AB	Other petroleum gases , in gaseous state
2711 2900 90		Other gaseous hydrocar , in gaseous state
<b>84. 71</b>		<b>Automatic data processing machines and units thereof magnetic or optical readers, machines for transcribing data onto data media in coded form and machines for processing such data, not elsewhere specified or included</b>
		-Portable Automatic data processing machines, weighing not more than 10kg, consisting of at least a central processing unit, a keyboard and a display
8471. 3010	A	-Panel computer
8471. 3090	A	-Other
		-Other Automatic data processing machines
		--Comprising in the same housing at least a Central processing unit and an input and output unit, whether or not combined
8471. 4110	3	---mainframes
8471. 4120	3	-mini-computers
8471. 4140	A	-Microprocessings
8471. 4190		-Other
		-Other, presented in the form of systems
8471. 4910	3	-mainframes
8471. 4920	3	-mini-computers
8471. 4940		-Microprocessings
		-Other
8471. 4991		-Processing machines for the distributed control
		system

8471. 4999		-Other
		-Processing units other than those of subheading No. 8471. 41 or 8471. 49 , whether or not containing in the same housing one or two of the following types of unit storage units , input units, output units
8471. 5010	3	-mainframes
8471. 5020	3	-mini-computers
8471. 5040		-Microprocessings
8471. 5040 01		Microprocessings, with display and host( whether or not containing in the same housing one or two of storage units, input or output units)
8471. 5040 90		Other processing unit of microprocessings ( whether or not containing in the same housing one or two of storage units, input or output units)
8471. 5090		-Other
		— Input or output units, whether or not containing storage units in the same housing
8471. 6040		-Terminating machines for the huge computers, mainframes and mini-computers
8471. 6050		-Scanner
8471. 6060		-Digitizer
		-Keyboards , mice
8471. 6071		-Keyboards
8471. 6072		-mice
8471. 6090		-Other
		-storage units
8471. 7010		-rigid disk drives
8471. 7020		-Floppy disk drives
8471. 7030		---CD drives
8471. 7030 10		CD-R drives ( for automatic data processing machines )
8471. 7030 90		Other CD drives ( for automatic data processing machines )
8471. 7090		-Other
8471. 8000		-Other units of Automatic data processing machines
8471. 9000		-Other
8471. 9000 10		CD - R machines used exclusively for copying( also called CD repeaters)
8471. 9000 90		Magnetic or optical readers, not elsewhere specified or included ( including machines for transcribing data onto data media in coded form and machines for processing such data)
84. 43		Printing machinery used for printing, cylinders and other printing components of heading 84.42 other printers Copying machines and facsimile machines , whether or not combined Part and accessories thereof

		-printing machinery used for printing by means of plates, cylinders and other printing components of heading No.. 84. 42
8443. 1100		-Offset printing machinery reel-fed
8443. 1200		-Offset printing machinery sheet-fed, office type ( using sheets with one side not exceeding 22cm and the other side not exceeding 36cm in the unfolded state )
		-Other Offset Printing machinery
		-Sheet fed
8443. 1311		-single color
8443. 1312		-Double colors
8443. 1313		-four colors
8443. 131301		Four - color sheet fed offset printing presses ( single folio double side printing speed 16000 folio/hour)
8443. 131302		Four - color sheet fed offset printing press ( single folio double sides printing speed $\geq 13000$ pcs/hr)
8443. 131303		Four - color sheet fed offset printing press ( sheet wise or full - sheet one piece single side printing speed $\geq 13000$ pcs/hr)
8443. 1313 90		Other four - color sheet fed offset printing press (machines printing with commodities in Duty item 84. 42)
8443. 1319		-Other
8443. 131901		Five( or higher) - color sheet fed offset printing press ( speed 16000 pcs/h)
8443. 131902		Five( or higher) - color sheet fed offset printing press ( single folio double sides printing speed $\geq 13000$ pcs/hr)
8443. 131903		Five( or higher) - color sheet fed offset printing press( sheet wise or full - sheet one piece single side printing speed 13000 pcs/hr)
8443. 1319 90		Other sheet fed offset printing press ( machines printing with commodities under heading No.. 84. 42)
8443. 1390		-Other
8443. 1400		-Letterpress printing machinery, reelfed, excluding flexographic printing
8443. 1500		-Letterpress printing machinery Other than reelfed, excluding flexographic printing
8443. 1600		-Flexographic Printing machinery
8443. 160001		Flexographic printing machinery, linear speed $\geq 300$ m/min. Wide $\geq 800$ mm flexographic presses, using good in heading No.. 84. 42 10 printing
8443. 160002		Flexographic press, unit-Type, linear speed 160 m / min, 250 mm $\leq$ width < 800 mm ( with function of stamping or

		holography or screen printing)
8443. 1600 90		Other flexographic printing machinery ( flexographic press and machines printing with commodities under heading No.. 84. 42 )
8443. 1700		--Gravure Printing machinery
8443. 170001		Gravure printing machinery , linear speed $\geq$ 350m/ min, using goods in heading No. 84. 42 to printing
8443. 1700 90		other gravure printing machinery, using goods in heading No. 84. 42 to printing
		-Other
		-Screen Printing machinery
8443. 1921		----cylinder screen Press
8443. 192101	0	Rotary screen printing machines for textile
8443. 1921 90	0	Other rotary screen printing machines ( printing machinery using the commodities under heading No. 84. 42)
8443. 1922		-Platen Screen Press
8443. 192201	0	Flat screen printing machines for textile
8443. 1922 10	6	Disk presser for producing compact disks( machines using the commodities under heading No.. 84. 42 for printing )
8443. 1922 90	0	Other platen screen presses ( printing machinery using the commodities under heading No.. 84. 42)
8443. 1929	0	-Other
8443. 1980	0	-Other
		-Other printers , copying machines and facsimile machines , whether or not combined
		-Machines which perform two or more of the functions of printing, copying or facsimile. transmission, capable of connecting to an automatic data processing machine or to a network
8443. 3110		-Electrostatic photosensitive-type
8443. 3110 10	M	Electrostatic - sensitive multifunctional integrated encrypting facsimile machines ( capable of connecting to an automatic data processing machine or to a network )
8443. 311090		Other electrostatic - sensitive multifunctional integrated machines ( capable of connecting to an automatic data processing machine or to a network )
8443. 3190		-Other
8443. 3190 10	A	Other machines which perform two of the function of printing, copying( capable of connecting to an automatic data processing machine or to a network)
8443. 3190 20	AM	Other multifunctional integrated encrypting facsimile machines ( machines with the function of printing,



		copying or both)
8443. 3190 90	A	Other machines which perform two or more of the function of printing, copying, facsimile transmission ( other than machines which perform two of the function of printing , copying , capable of connecting to an automatic data processing machine or to a network)
		-Other, capable of connecting to an automatic data processing machine or to a net work
		-Printer of a kind solely used in the machines of heading No.. 8471
8443. 3211	A	-Stylus printers
8443. 3212	A	-Laser printers
8443. 3213	A	----ink-jet-printers
8443. 3214	A	-Thermal printers
8443. 3219	A	-Other
		-Digital Printing machines
8443. 3221		----ink-jet Printing machines
8443. 322101		Ink-jet printing equipment with breadth > 60cm ( capable of connecting to an automatic data processing machine or to a network)
8443.3221 02		Ink - jet printing apparatus ,297 mm < Wide ≤ 360mm , capable of connecting to an automatic data processing machine or to a network
8443. 3221 90		Other digital ink-jet presses ( capable of connecting to an automatic data processing machine or to a network)
8443. 3222		-Electrostatic photographic printing machines ( laser printing machines )
8443. 322201		Electrostatic photographic printing equipment ( laser printers) with breadth > 32. 9cm ( capable connecting to an automatic data processing machine or to a network)
8443. 3222 90		Other digital electrostatic photographic printers ( laser printers) ( capable connecting to an automatic data processing machine or to a network)
8443. 3229		-Other
8443. 3290		-Other
8443. 3290 10	AM	other encryption facsimile machine ( capable connecting to an automatic data processing machine or to a network)
8443. 3290 90	A	Other presses ( printers ) , copying machine, facsimile machine .and teleprinters ( capable of connecting to an automatic data processing machine or to a network)
		-Other
		-Electrostatic photo-copying appcortus

8443. 3911		-Operating by reproducing the original image directly onto the copy( direct process)
8443. 3912		-Operating by reproducing the original image via an intermediate onto the copy ( indirect process)
		-Other photocopying apparatus
8443. 3921		----Incorporating an optical system
8443. 3922		-of the contact type
8443. 3923		-thermo copying apparatus
8443. 3924		-thermo - sublimé copying apparatus
		-Digital Printing machines
8443. 3931		----ink-jet Printing machines
8443. 3932		-Electrostatic photographic printing machine ( Laser printing machines )
8443. 3939		-Other
8443. 3990		-Other
		-Parts and accessories
		-Parts and accessories of Printing machinery used in printing by means of plates , cylinders and other printing components of heading 84. 42
		-machines for uses ancillary to Printing
8443. 9111		-Roll material feeder
8443. 9111 01	0	Automatic roll material feeder .feeding speed 12m/s
8443. 9111 90	0	Other roll material feeder
8443. 9119	0	-Other
8443. 9190		-Other
8443. 919001	0	Remote controllers for controlling the use of ink by offset printing machine ( including ink-color control devices, ink amount regulation eleVICES and ink fountain containers )
8443.9190 90		Parts and accessories of other machine using the commodities under heading No.. 84. 42 for printing
		-Other
8443. 9910	0	-Machines for uses ancillary to Digital Printing machines
		-Parts of Digital Printing machines
8443. 9921		-Thermal print Heads
8443. 9929		-Other
8443. 992901		Piezo electric ink gun( other than parts and accessories of machinery using the commodities under heading No.. 8422 for printing)
8443. 9929 90		Other parts of digital printing machine ( other than parts and accessories of machinery using the commodities under heading No.. 8422 for printing)
8443. 9990		-Other
8443. 9990 10		Photosensitive drums and toner cartridges containing

		photosensitive drums for other presses ( printer ) , copying machine and facsimile machine
8443. 9990 90		Spare parts and accessories for other presses ( printer ) , copying machine and facsimile machine
<b>84. 73</b>		<b>Parts and accessories ( other than covers, carrying cases and the like ) suitable for use solely or principally with machines of headings No. 84. 69 to 84. 72</b>
8473. 1000		-Parts and accessories of the machines of heading No. 84. 69
		-Parts and accessories of the machines of heading No. 84. 70
8473. 2100		-of the electronic calculating machines of subheading No.. 8470. 10 , 8470. 21 or 8470. 29
8473. 2900		-Other
		-Parts and accessories of the machines of heading No. 84. 71
8473. 3010		-Of the machines of subheading 8471.4110, 8471. 4120 , 8471. 4910 . 8471. 4920 , 8471. 5010 , 8471. 5020 , 8471. 6090 . 8471. 7010 , 8471. 7020 , 8471. 7030 and 8471. 7090
8473. 3090		-Other
		-Parts and accessories of the machines of heading No. 84. 72
8473. 4010		-Banknote dispenser of automated teller
8473. 4090		-Other
8473. 409001		Parts and accessories of banknote sorters
8473. 4090 90		Parts and accessories of other office machines
8473. 5000		-Parts and accessories equally suitable for use with machines of two or more of the heading No.. 84. 69 to 84. 72
<b>40 05</b>		<b>Compounded rubber, unvulkanized, in primary forms or in plates, sheets or strip</b>
4005 1000		-Compounded with Carbon black or Silica
4005 2000		-Solutions dispersions other than those of subheading No. 4005 10
		-Other
4005 9100		-Plates, sheets and strip
4005 9900		-Other
<b>40 01</b>		<b>Natural rubber, balata, gutta-percha, guayule, chicle and similar natural gums, in primary forms or in plates, sheets or strip</b>
4001 1000	AB	-natural rubber latex whether or not prevulcanized
		-Natural rubber in other forms
4001 2100	AB	-Smoked sheets
4001 2200		-Technically specified natural rubber ( TSNR)
4001 2900		-Other

4001 3000		-Balata, gutta-percha, guayule, chicle and similar natural gums
<b>40 14</b>		<b>Hygienic or pharmaceutical articles ( including teats) , of vulcanized rubber other than hard rubber, with or without fittings of hard rubber</b>
4014 1000		-Sheath contraceptives
4014 9000	A	-Other
<b>39 01</b>		<b>Polymers of ethylene, in primary forms</b>
3901 1000		-Polyethylene having a specific gravity of less than 0.94
3901 1000 暂 01		Polyethylene having a specific gravity of less than 0.94 , in primary forms ( CIF > USD3 800/ton)
3901 1000 90		Polyethylene having a specific gravity of less than 0.94 , in primary forms
3901 2000		-Polyethylene having a specific gravity of 0.94 or more
3901 200001		Polyethylene having a specific gravity of 0.94 or more in primary forms( CIF > USD3800/ton)
3901 2000 90		Polyethylene having a specific gravity of 0.94 or more , in primary forms
3901 3000		-Ethylene-Vinyl acetate copolymers
		-Other
3901 9010		-Ethylene-propylene copolymers
3901 9020		-Linearity Low-density polyethylene
3901 9090		-Other
<b>39 15</b>		<b>Waste, parings and scrap , of plastics</b>
3915 1000	AP	-Of polymers of ethylene
3915 2000	AP	-of polymers of Styrene
3915 3000	AP	-of polymers of Vinyl chloride
		-of Other plastics
3915 9010	AP	-Of polyethylene glycol terephthalate
3915 9090	AP	-Other
<b>39 03</b>		<b>Polymers of styrene, in primary forms</b>
		-Polystyrene
3903 1100	AB	-Expansible
		-Other
3903 1910		-modified
3903 1990		-Other
3903 2000		-Styrene-Acrylonitrile ( SAN) copolymers
		-Acrylonitrile-butadiene-Styrene ( ABS) copolymers
3903 3010		-Modified
3903 3090		-Other
3903 9000		-Other
<b>90. 30</b>		<b>Oscilloscopes, spectrum analysers and other instruments</b>

		<b>and apparatus for measuring or checking electrical quantities, excluding meters of heading No. 90. 28 instruments and apparatus for measuring or detecting alpha, beta, gamma, X-ray, cosmic or other ionizing radiations</b>
9030. 1000		-Instruments and apparatus for measuring or detecting ionizing radiations
		-Oscilloscopes and oscillographs
9030. 2010		-For general use, of test frequency less than 300 MHz
9030. 2090		-Other
		-Other instruments and apparatus, for measuring or checking voltage, current, resistance or power
		-Multimeters without a recording device
9030. 3110		-Digital, of measuring range of 5. 5 Or less
9030. 3190		-Other
9030. 3200		-Multimeters with a recording device
		-other without a recording device
9030. 3310		-Digital ammeters or voltmeters, of measuing rang of 5. 5or less
9030. 3320		-Resistnace measaring instruments
9030. 3390		-Other
9030. 3900		-Other with a recordings device
		-Other instruments and apparatus, specially designed for telecommunications ( for example , cross-talk meters, gain measuring instruments, distortion factor meters, psophometers)
9030. 4010		-Digital frequency meters, of test frequency less than 12.4GHz
9030. 4090		-Other
		-Other instruments and apparatus
9030. 8200		-For measuring or checking semiconductor wafers or devices
		-Other. with a recording device
9030. 8410		-For measuring inductances or capacitances
9030. 8490		-Other
		-Other
9030. 8910		-For measuring inductances or capacitances
9030. 8990		-Other
9030. 8990 10	3	Neutron detection and measurement instruments (used exclusively to measure the neutron flux of the reactor cores)
9030. 8990 90		other instruments and apparatus for measuring or checking

		electrical quantities ( without a recording device )
9030. 9000		-Pans and accessories
9030. 9000 01		Parts of instruments for measuring or checking semiconductor wafers or devices
9030. 9000 02		Printed circuit components for products falling within the ITA( including such components for external connections such as cards that conform to the PCMCLA standard )
9030. 9000 90		Parts and accessories of goods of heading 90. 30
<b>90. 13</b>		<b>Liquid crystal devices not constituting articles provided for more specifically in other headings lasers, other than laser diodes other optical appliances and instruments, not specified or included elsewhere in this Chapter</b>
9013. 1000		-Telescopic sights for fitting to arms periscopes telescopes designed to form parts of machines, appliances, instruments or apparatus of this Chapter or Section XVI
9013. 2000		-Lasers, other than laser diodes
9013. 200001		980nm , 1480nm pump laser of SDH $\geq$ 2. 5 GB/s , optical transmission equipment for wave-division multicomplexing
9013. 200002		Gas laser generators for laser cutting machines, cutting power 2 kW
9013. 2000 20	3	AVLIS, MLIS . CRISLA laser systems
9013. 2000 30	j	Argon ion lasers ( average output power $\geq$ 40W, working wavelength = 400nm - 515nm)
9013. 2000 40	3	Alexandrite lasers ( bandwidth $\leq$ 0. 005 nm , repetition rate > 125 Hz , power > 30W)
9013. 2000 50	j	Pulsed carbon dioxide lasers ( repetition rate > 250Hz , power > 500W, pules width < 200ns)
9013. 2000 60	j	Pulsed excimer lasers ( Xef, Xecl or KrF type, recurrent rate > 250Hz , power > 500W)
9013. 2000 70	j	Copper vapor lasers ( average output power $\geq$ 40W, working wavelength = 500nm - 600nm)
9013. 2000 80	j	Neodymium doped laser ( not glass laser) ( Dual-use items controlled commodity)
9013. 2000 90		Other lasers ( other than laser diodes)
		-Other devices, appliances and instruments
9013. 8010		-Hand magnifying glasses
9013. 8020		---" Door eyes"
9013. 8030		-Liquid crystal display panel
9013. 8030 10		size $\leq$ 10. I inch liquid crystal display panel
9013. 8030 20		10.1 inch < size $\leq$ 32 inch liquid crystal display panel
9013. 8030 90		Other liquid crystal display panel
9013. 8090		-Other
		-Parts and accessories

9013. 9010		-For goods of subheading No.. 9013. 1000 and 9013. 2000
9013. 9020		-For goods of subheading No. 9013. 8030
9013. 9090		-Other
90. 31		Measuring or checking instruments, appliances and machines, not specified or included elsewhere in this Chapter profile projectors
9031. 1000		-Machines for balancing mechanical parts
9031. 1000 10	3	Gyro dynamic balancing testers
9031. 1000 90		Other machines for balancing mechanical parts
9031. 2000		-Test benches
9031. 2000 10		Gyro/motor running test-benches
	j	
9031. 2000 20	3	Accelerometer cest-benches
9031. 2000 30	3	Testbed ( capable of testing rocket engine with a thrust > 90KN or testing three individual thrust forces at the same time)
9031. 2000 40	j	Inertial platform test-benches ( including high-precision centrifuge and turntable)
9031. 2000 90		Other test benches
		-Other optical instruments and appliances
9031. 4100		-For inspecting semiconductor wafers or devices or for inspecting photomasks or reticles used in manufacturing semiconductor devices
		-Other
9031. 4910		-Profile projectors
9031. 4920		-Measuring grating device
9031. 4990		-Other
9031. 4990 10	60	Automatic inspection detectors ( AID) for CD production
9031. 4990 90		Other measuring or checking optical instruments and appliances, not elsewhere specified or included in chapter 90
		-Other instruments , appliances and machines
9031. 8010		-Optical telecommunication and optical fibre performance testing instruments
9031. 8020		---Coordinate measuring machine
		-Apparatus for examinations . without damaging structure ( other than apparatus for radiological examinations)
9031. 8031		-Apparatus for ultrasonic examinations
9031. 8032		-Apparatus for magnetic examinations
9031. 8033		-Apparatus for eddy examinations
9031. 8039		-Other
9031. 8090		-Other
9031. 809001		Runway friction coefficient tester
9031. 809002		Audio life detection instrument

9031. 809003		Audio and video life detection instrument
9031. 8090 10	3	Inertial measurement unit testers
9031. 8090 20	j	Gyro tuning testers
9031. 8090 90		Other measuring or checking instruments, appliances and machines ( not elsewhere specified or included in Chapter 90)
9031. 9000		-Parts and accessories
9031. 9000 20	j	Processing clamps for stabilizing element of inertial measurement unit
9031. 9000 30	j	Inertial platform balancing clamps
9031. 9000 90		Other parts of instruments, appliances and machines of heading No.. 90. 31 , not elsewhere specified or included in chapter 90
<b>29 02</b>		<b>Cyclic hydrocarbons</b>
		-Cyclanes, cyclenes and cycloterpenes
2902 1100	AB	--Cyclobexane
		-Other
2902 1910		-Pinene
2902 1920		-- -4 -alkyl -cyclobexane
2902 1990		-Other
2902 1990 11	s	1-methyl cyclopropene
2902 1990 12		D-limonene
2902 1990 90		Other cyclanes, cyclenes and cycloterpenes
2902 2000	AB	-Benzene
2902 3000	23	-Toluene
		-Xylenes
2902 4100		-o-Xylene
2902 4200		--m-Xylene
2902 4300		-p-Xylene
2902 4400		-Mixed Xylene isomers
2902 5000	AB	-Styrene
2902 6000	AB	-ethylbenzene
2902 7000	AB	-Cumene
		-Other
2902 9010		-Tetrahydronaphthalene ( tetralin)
2902 9020	AB	-Naphthalene
2902 9030		-Dodecylbenzene
2902 9040		---4 - (4'- alkyl cyclohexyl) cyclohexyl ethylene
2902 9090		-Other
2902 9090 10		Biphenyl
2902 9090 90		other aromatic hydrocarbons
<b>29 05</b>		<b>Acyclic alcohols and their hydrogenated, sulphonated,</b>



		<b>nitrated or nitrosated derivatives</b>
		-Saturated monohydric alcohols
2905 1100	AB	-Methanol ( methyl alcohol)
		-Propan-1-ol ( propyl alcohol) and propan-2-ol ( isopropyl alcohol)
2905 1210	AB	-Propan-1-ol ( propyl alcohol)
2905 1220	ABC	-Propan-2-ol ( isopropyl alcohol)
2905 1300	AB	-Butan-1-ol ( n-butyl alcohol)
		-Other butanols
2905 1410		-ISO-butyl alcohol
2905 1420		-sec-butyl alcohol
2905 1430		-tert-Butyl alcohol
		-Octanol ( octyl alcohol) and isomers thereof-
2905 1610		---n-Octanol
2905 1690		-Other
2905 1700		-Dodecan-1-ol ( lauryl alcohol ) , hexadecan-1-ol ( cetyl alcohol) and octadecan-1-ol ( stearyl alcohol)
		-Other
2905 1910	23	-3 , 3 -Dimethyl-2-butanol ( pinacolyl alcohol)
2905 1990		-Other
2905 1990 10	s	Triacontanol
2905 1990 90		Other saturated monohydric alcohols
		-Unsaturated monohydric alcohols
		-acyclic terpene alcohols
2905 2210		---Ceraniol , nerol ( cis-3 , 7 -Dimethyl-2 , 6-octadien-1-ol)
2905 2220		---Citronellol ( 3 , 7 -Dimethyl-6-octen-1-ol)
2905 2230	AB	-Linanol
2905 2290		-Other
2905 2900		-Other
		-Diols
2905 3100		-Ethylene glycol ( ethanediol)
2905 3200f		-Propylene glycol ( propane-1 ,2-diol)
		-Other
2905 3910		-2 , 5 -dimethyl hexanediol
2905 3990		-Other
2905 399001	AB	1 , 3 -Propanediol
2905 3990 02	AB	1 , 4 -Butanediol
2905 3990 10	s	Ethohexanediol
2905 3990 90	AB	other diatomic alcohols
		-Other polyhydric alcohols
2905 4100		-2 -Ethyl-2- ( hydroxymethyl ) propane-1 , 3-diol

		( trimethylolpropane )
2905 4200		-Pentaerythritol
2905 4300	AB	-Mannitol
2905 4400		-D-glucitol ( sorbitol)
2905 4500	AB	--Glycerol
		-Other
2905 4910	AB	-Xylitol
2905 4990		-Other
		-hatogenated, sulphonated, nitrated or nitrosated derivatives of acyclic alcohols
2905 5100	I	-Ethchlorvynol ( INN)
2905 5900		-Other
2905 5900 10	I	Salts of Ethchlorvynol ( INN)
2905 5900 20	3A	2-Chloroethanol
2905 5900 30		Bronopol
2905 5900 40	s	Ceiftor
2905 5900 90		Other hatogenated, sulphonated derivatives, of acyclic alcohol
<b>29 09</b>		<b>Ethers, ether-alcohols, ether-phenols, ether-alcohol-phenols, alcohol peroxides, ether peroxides, ketone peroxides ( whether or not chemically defined ) , and their hatogenated , sulphonated, nitrated or nitrosated derivatives</b>
		-acyclic ethers and their hatogenated, sulphonated, nitrated or nitrosated derivatives
2909 1100	23	-Diethyl ether
		-Other
2909 1910		-methyl ether
2909 1990		-Other
2909 1990 11	s	Octachlorodipropyl ether
2909 1990 12	s	Neruaruort( DCIP)
2909 1990 90		Other acyclic ethers and their hatogenated ( including sulphonated, nitrated or nitrosated derivatives and their hatogenated)
2909 2000		-cyclanic, cyclenic or cycloterpenic ethers and their hatogenated, sulphonated nitrated or nitrosated derivatives
		-Aromatic ethers and their hatogenated, sulphonated, nitrated or nitrosated derivatives
2909 3010		---1 -alkoxylace-4 - ( 4-vinyl cyclohexyl ) -2 , 3 -difluorobenzene
2909 3090		-Other
2909 3090 11	s	Methoxychlor , nitrofen
2909 3090 12	s	Ethofenprox , halfenprox , trifluoro

2909 3090 13	s	Chloroanisole , chlomethoxvfen
2909 3090 14	s	Fluorodifen , chlomiLrofen
2909 3090 15	s	Fluoronitrofen , oxyfluorfen
2909 3090 90		other aromatic ethers and its hatogenated, sulphonated , nitrated or nitrosated derivatives
		-ether-alcohols and their hatogenated, sulphonated, nitrated or nitrosated derivatives
2909 4100		-2 , 2 ' -Oxydiethanol ( diethylene glycol, digol)
2909 4300		-Monohuiyl ethers of Ethylene glycol or of Diethyl-ene glycol
2909 4400		-Other monoalkylethers of ethylene glycol or of diethylene glycol
		-Other
2909 4910		---m-Phenoxy henzalcohol
2909 4990		-Other
2909 5000		-ether-Phenols, eLher-alcohol-Phenols and their halogenated, sulphonated, nitrated or nitrosated derivatives
2909 6000		-alcohol peroxides, ether Peroxides, ketone peroxides and their hatogenated , sulphonated , nitrated or nitrosated derivatives
<b>26 01</b>		<b>Iron ores and concentrates, including roasted iron pyrites</b>
		— Iron ores and concentrates, other than roasted iron pyrites
		- Non-agglomerated
2601 1110	7A	-The average grain size less than 0 8mm
2601 1120	7A	-The average grain size not less than 0 8mru but not more than 6 3 mm
2601 1190	7A	-Other
2601 1200	7A	-Agglomerated
2601 2000	7A	-roasted iron pyrites
26 06		Aluminium ores and concentrate
2606 0000	47xy	Aluminium ores and concentrate
26 02		Manganese ores and concentrates, including ferruginous manganese ores and concentrates with a manganese content of 20% or more, calculated on the dry weight
2602 0000	A	Manganese ores and concentrates, including ferruginous manganese ores and concentrates with a manganese content of 20% or more, calculated on the dry weight
74 04		Copper waste and scrap
7404 0000		Copper waste and scrap
7404 000010	AP	Waste electric machines, waste wires cables, mainly for recovering copper
7404 000090	AP	Other copper waste and scrap
<b>74 10</b>		<b>Copper foil ( whether or not printed or backed with paper , paperboard , plastics or similar backing</b>

		<b>materials) of a thickness ( excluding any backing) not exceeding 15mm</b>
		-not hacked
7410 1100		-Of refined copper
7410 110001		Copper foil for copper-clad board and printed circuit board, thickness $\leq 0.15\text{mm}$
7410 1100 90		Other copper foil of refined copper, not backed , thickness ( excluding any hacking) $\leq 0.15\text{mm}$
		-Of copper alloys
7410 1210		-Of copper-nickel base alloys ( cupronickel) or copper-nickel-zinc base alloys ( nickel silver)
7410 1290		-Other
		-Backed
		-Of refined copper
7410 2110		---copper - clad board used to print circuit
7410 2190		-Other
		-Of copper alloys
7410 2210		-of copper-Nickel base alloys ( cupronickel) or copper-nickel-zinc base alloys ( nickel silver)
7410 2290		-Other
<b>74 08</b>		<b>Copper wire</b>
		-of refined copper
7408 1100		-Of which the maximum cross-sectional dimension exceeds 6mm
7408 1900		-Other
7408 190001		Other refined copper wire , containing oxygen less than 5 PPM ( cross-sectional dimension $\leq 6\text{mm}$ )
7408 1900 90		Other refined copper wire cross-sectional dimension $\leq 6\text{mm}$
		-Of copper alloys
7408 2100		-of copper-Zinc base alloys ( brass)
		-Of copper-nickel base alloys ( cupronickel) or copper-nickel-zinc base alloys ( nickel silver)
7408 2210		-wire of Nickel copper zinc lead base alloy
7408 2290		-Other
7408 2900		-Other