

Guide of China's Import from Thailand 2015



ASEAN-CHINA CENTRE
中国 — 东盟中心

Contents

I . Overview of China-ASEAN Economic and Trade Cooperation	1
II . Profile of China-Thailand Bilateral Trade	2
III. List of China's Agricultural Imports from Thailand	4
(I) Selection Method	4
(II) List of Main Agricultural Imports	4
(III) Situation of Import Tariff Quotas of China's Agricultural Products	6
1. List of agricultural products subject to the administration of import tariff quotas	6
2. The import tariff quotas management system of agricultural products	7
(IV) Distribution of Import Tariff Quotas of Agricultural Products in 2015	12
1. Distribution of import tariff quotas of grains	12
2. Distribution of import tariff quota of cotton	14
3. Distribution of import tariff quota of sugar	14
IV. List of China's Non-Agricultural Imports from Thailand	17
(I) Selection Method	17
(II) List of Main Non-Agricultural Imports	17
V . Process Management of China's Imports from Thailand	20
(I) Inspection & Quarantine	20
(II) Customs Clearance	22
(III) Cooperation between customs and inspection & quarantine departments	23
Appendix I	25
Appendix II	26
Appendix III	48

I . Overview of China-ASEAN Economic and Trade Cooperation

China-ASEAN FTA is the first FTA that China signed with other economies. And it is the biggest established FTA. ASEAN is made up by the ten member states of Indonesia, Malaysia, Philippines, Singapore, Thailand, Brunei Darussalam, Viet Nam, Lao PDR, Myanmar and Cambodia which covers 1.85 billion people and 1.4 thousand square kilometers. China and ASEAN Member signed the Framework Agreement on China-ASEAN Comprehensive Economic Cooperation at the sixth China-ASEAN Summit in November 2002. The establishment of China-ASEAN free trade area enhances the close economic and trade relations between the two parties, and also contributes to the economic development of Asia and the world at large.

According to the database of the commodity trade of the United Nations, China-ASEAN trade rose at an annual rate of about 20% from over \$50 billion to \$480 billion between 2002 and 2014. And the bilateral accumulated investment is over \$1000. China-ASEAN trade increased fast except that in 2012 since the Global Financial Crisis of 2008, and accounted for 11.16% of China's foreign trade. China-ASEAN trade had been in favor of the ASEAN side during the 2000-2011 period. But China's trade surplus appeared in 2012 and the surplus was \$44.53 billion in 2013. Increasing imports from ASEAN should receive much attention, and it will contribute to China's trade balance.

ASEAN has comparative advantages in products such as rice, fish, wood, etc. in terms of the weather and natural resources. China should import the products more from ASEAN. Since the entrance into the WTO, China's agricultural foreign trade developed fast, but China's agricultural imports increased faster than its agricultural exports and its agricultural trade deficit grew. On one hand, living standards improvement induces the rapid increase of high-quality agricultural products. On the other hand, China's agriculture faces strong competition as agricultural market is open. China-ASEAN agricultural trade developed slowly and the share of China's agricultural foreign trade decreased although ASEAN was still an important source of China's agricultural imports. Agricultural trade between China and ASEAN dropped by about 5% in 2013. The share of China-ASEAN agricultural trade in China's

agricultural foreign trade declined to 9.3% in 2013 from 10.4% in 2009. The gap between supply and demand of grain exists in China. China and ASEAN are complementary in agricultural products such as fruits, vegetables, fish and etc. These can contribute to economic and trade cooperation of the two parties. Since China-ASEAN FTA strategy was carried out, the two parties cut the import tariffs down and promoted trade facilitation such as the procedures of customs clearance, the etc. The bilateral trade liberalization has made great progress. ASEAN suppliers are lack of understanding import quota administration, inspection and quarantine, import operators, etc. in agricultural trade. This hindered the development of agricultural trade between the two parties.

China will widen the opening up to ASEAN, benefit ASEAN on a basis of equality and mutual benefit in the new era of deepening reform and expanding opening-up. Xi Jinping, China's president, pointed out, "China is pleased to improve China-ASEAN FTA, and will manage to bring the bilateral trade up to \$1 trillion by 2020", and "China is pleased to reinforce sea cooperation, make good use of the China-ASEAN Investment Cooperation Fund", and jointly build the 21st Century Maritime Silk Road. In the new era, to compile *The Guide of China's Imports from ASEAN* will inject new impetus into the bilateral economic and trade development.

II. Profile of China-Thailand Bilateral Trade

In 2010, China-ASEAN Free Trade Area (CAFTA) was completed as scheduled, upon which China-Thailand bilateral trade cooperation stepped into a new historical stage. In 2012, Chinese government and Thai government announced to build comprehensive strategic partnership. In 2013, the bilateral trade between China and Thailand reached the highest in the history, and China became the largest foreign trade partner of Thailand.

In 2014, the total volume of bilateral trade between China and Thailand was \$72.6 billion, **decreasing by 1.7%**, of which the total import-export volume of agricultural trade was \$7.7 billion. China's import volume of goods from Thailand and its export volume of goods to Thailand were \$38.3 billion and \$34.3 billion respectively.

Plastic rubber and electromechanical products are the two key products exported by Thailand to China, whose exports in 2014 were \$7.77 billion and \$5.51 billion, respectively accounting for 31.3% and 22.2% of Thailand's total exports to China. The

export volume of plant products was \$3.02 billion, accounting for 12.2% of Thailand's total exports to China, known as the third largest commodity exported by Thailand to China. In 2014, the fourth and the fifth largest commodities exported by Thailand to China were chemical products and mineral products, respectively \$2.86 billion and \$1.37 billion, jointly accounting for 17% of Thailand's total exports to China.

Electromechanical products occupied almost the half of Thailand's total imports from China, whose import volume in 2014 was \$18.96 billion, basically the same as the last year, accounting for 49.2% of Thailand's total imports from China. The second to the fifth largest commodities imported by Thailand from China were base metals & products, chemical products, plastic rubber, textiles & raw materials in sequence, whose imports in 2014 were \$5.56 billion, \$3.35 billion, \$1.86 billion and \$1.69 billion, respectively increasing by 13.1%, 12.6%, 9.8% and 1.8%. The import volume of transportation equipment was \$1.45 billion, decreasing by 28.3%. The imports of the 2nd~5th largest commodities imported by Thailand from China accounted for 36.1% of Thailand's total imports from China.

III. List of China's Agricultural Imports from Thailand

(I) Selection Method

The trade of agricultural products plays an important role in the China-ASEAN trade, thus ASEAN suppliers need a more particular knowledge on the application of quotas, inspection and quarantine of Chinese agricultural products. In order to prepare this guide, the main agricultural products that China imports from ASEAN shall be firstly determined. Regarding the HS 4-bit code as a basis of classifying agricultural products, in accordance with the ordering of sum of agricultural products that China imported from Thailand in 2014, the agricultural products ranking in the top 30 are selected.

(II) List of Main Agricultural Imports

The list of main agricultural products China imported from Thailand in 2014 is formed according to UNCOMTRADE. In order to facilitate Thailand suppliers' export of agricultural products to China, the supervision conditions of main agricultural products imported are listed in appendixes (see details in Appendix I and II).

List of China's Main Agricultural Imports from Thailand

Number	HS Code	Article Description
1	07 14	Manioc, arrowroot, salep, Jerusalem artichokes, sweet potatoes and similar roots and tubers with high starch or inulin content, fresh, chilled, frozen or dried, whether or not sliced or in the form of pellet; sago pith;
2	08 10	Other fruit , fresh
3	11 08	Starthes; inulin
4	10 06	Rice
5	17 01	Cane or beet sugar and themically pure sucrose, in solid form
6	35 05	Dextrins and other modified starthes (for example, pregelatinized or esterified starthes); glues based on starthes, or on dextrins or other modified starthes
7	08 04	Dates, figs, pineapples, avocados, guavas, mangoes and mangosteens , fresh or dried
8	03 06	Crustaceans, whether in shell or not , live , fresh ,chilled, frozen, dried, salted or in brine; smoked crustaceans, whether or not cooked before or during the smoking process; crustaceans, in

		shell, cooked by steaming or by boiling in water, whether or not chilled , frozen , dried , salted or in brine; flours, meals and pellets of crustaceans, fit for human consumption
9	10 05	Maize (corn)
10	21 06	Food preparations not elsewhere specified or included
11	23 01	Flours , meals and pellets, of meat or meat offal, of fish or of crustaceans, mollusks or other aquatic invertebrates, unfit for human consumption
12	03 03	Fish, frozen, excluding fish fillets and other fish meat of heading No. 03 04
13	08 13	Fruit, dried, other than that of headings No. 08 01 to 08 06; mixtures of nuts or dried fruits of this Chapter
14	20 08	Fruit, nuts and other edible parts of plants, otherwise prepared or preserved, whether or not containing added sugar or other sweetening matter or spirit, not elsewhere specified or included
15	08 03	Bananas, including plantains , fresh or dried
16	16 04	Prepared or preserved fish; caviar and caviar substitutes prepared from fish eggs
17	22 02	Waters, including mineral waters and aerated waters, containing added sugar or other sweetening matter or flavoured, and other non-alcoholic beverages, not including fruit or vegetable juices of heading No. 20 09
18	11 02	Cereal flours other than of wheat or maslin
19	12 09	Seeds, fruit and spores, of a kind used for sowing
20	23 03	Residues of starch manufacture and similar residues, beet-pulp, bagasses and other waste of sugar manufacture, brewing or distilling dregs and waste , whether or not in the form of pellets
21	15 20	Glycerol, crude; glycerol waters and glycerol lyes
22	08 01	Coconuts, Brazil nuts and cashew- nuts, fresh or dried, whether or not shelled or peeled
23	03 07	mollusks, whether in shell or not, live, fresh, chilled, frozen, dried, salted or in brine; smoked mollusks, whether in shell or not, whether or not cooked before or during the smoking process; flours , meals and pellets of mollusks , fit for human consumption
24	06 03	Cut flowers and flower buds of a kind suitable for bouquets or for ornamental purposes, fresh, dried, dyed, bleached, impregnated or otherwise prepared
25	08 11	Fruit and nuts, uncooked or cooked by steaming or boiling in water, frozen, whether or not containing added sugar or other sweetening matter

26	21 03	Sauces and preparations therefore; mixed condiments and mixes seasonings; mustard flour and meal and prepared mustard
27	15 15	Other fixed vegetable fats and oils (including jojoba oil) and fractions thereof, whether or not refined, but not themically modified
28	17 04	Sugar confectionery(including white chocolate) , not containing cocoa
29	19 04	Prepared foods obtained by the swelling or roasting of cereals or cereal products (for example, corn flakes); cereals (other than maize (corn)) in grain form or in the form of flakes or other worked grains (except flour, groats and meal) , precooked or otherwise prepared, not elsewhere specified or included
30	08 05	Citrus fruit, fresh or dried

(III) Situation of Import Tariff Quotas of China's Agricultural Products

Our country has implemented the import tariff quotas management system to part of agricultural products. Pursuant to the quota quantities as promised in China's schedule of concession and commitments for the trade of goods after entry into the WTO, determine the annual quantities of the agricultural products subject to the administration of import tariff quotas permitted to enter the market. The import of agricultural products within the quota quantities will apply the in-quota tax rate, and the import of agricultural products outside the quota quantities will be implemented under the relevant provisions of the *Regulations of the People's Republic of China on Import and Export Duties*. Meanwhile, matters such as the authorized agency responsible for allocating import quotas of agricultural products have also been explicitly stipulated.

1. List of agricultural products subject to the administration of import tariff quotas

In accordance with the Interim Measures for the *Administration of Import Tariff Quotas of Agricultural Products* (No. 4 Decree of the Ministry of Commerce and the State Development Planning Commission [2003]), our country implements the import tariff quotas management system to products including wheat, corn, rice, bean oil, colza oil, palm oil, sugar, cotton, wool and wool tops, etc. According to relevant

commitments after China joined the WTO, the Ministry of Commerce issues the No.93 bulletin [2005] announcing that China has cancelled the import tariff quotas and import state-run trade management of bean oil, palm oil and colza oil since Jan. 1st, 2006.

At present, the categories of agricultural products subject to the administration of import tariff quotas are respectively: wheat, corn, rice, sugar, cotton, wool and wool tops.

2. The import tariff quotas management system of agricultural products

In accordance with the *Interim Measures for the Administration of Import Tariff Quotas of Agricultural Products* (No. 4 Decree of the Ministry of Commerce and the State Development Planning Commission [2003]) and the *Cancel of Import Tariff Quotas and Import state-run trade management, and Implementation of Automatic Import License of Bean Oil, Palm Oil and Colza Oil* (No.93 Decree of the Ministry of Commerce [2005]), within the year of the Gregorian calendar, the State will, pursuant to the quota quantities as promised in China's schedule of concession and commitments for the trade of goods after entry into the WTO, determine the annual quantities of the agricultural products subject to the administration of import tariff quotas permitted to enter the market.

(1) Basic requirements

Wheat, corn, rice, bean oil, colza oil, palm oil, sugar and cotton shall be subject to state-run trade quotas or non-state-run trade quotas. Those subject to state-run trade quotas shall be imported by state-run trade enterprises; those subject to non-state-run trade quotas may be imported by enterprises with the right of trade, and may also be imported directly by the final users with the right of trade.

Wool and wool tops shall be subject to the management of designated import enterprises, which shall be carried out in accordance with the *Measures for the Administration of Designated Management of Goods Import* (No. 21 Decree of the Ministry of Foreign Trade and Economic Cooperation [2001]) promulgated by the former Ministry of Foreign Trade and Economic Cooperation.

Import tariff quotas of agricultural products shall be global quotas.

The import tariff quotas of sugar, wool and wool tops shall be subject to the distribution of the Ministry of Commerce.

The import tariff quotas of wheat, corn, rice and cotton shall be subject to the distribution of the State Development and Reform Commission (SDRC) in conjunction

with the Ministry of Commerce (MOFCOM).

The *Certificates of Import Tariff Quotas of Agricultural Products* are applicable to the imports in the trade forms of general trade, processing trade, barter trade, small-scale border trade, assistance, donation and other forms.

The products entering the bonded warehouses, bonded zones and export processing zones are exempted for the *Certificates of Import Tariff Quotas of Agricultural Products*.

(2) Application of quotas

The period for applying for the import tariff quotas of agricultural goods shall be between Oct. 15th and Oct. 30th of each year (with the exception of the distribution form of drawing the quotas by coming order on the basis of contract). The MOFCOM and the SDRC will promulgate the next year's total quantity of import tariff quotas of each agricultural goods and the specific conditions for the application therefore as well as the tariff serial numbers and applicable tax rates determined by the Customs Tariff Committee of the State Council on the *International Business Daily*, the *China Economic Herald*, the MOFCOM website (<http://www.mofcom.gov.cn>) and the SDRC website (<http://www.sdpc.gov.cn>) one month before the application period. Sugar, wool and wool tops shall be subject to the promulgation of MOFCOM; and wheat, corn, rice and cotton shall be subject to the promulgation of SDRC.

The agencies authorized by MOFCOM shall, in light of the specific conditions promulgated, accept the applications on sugar, wool, wool tops and the relevant documents submitted, and transfer the qualified applications to the MOFCOM before Nov. 30th (with the exception of the distribution form of drawing the quotas by coming order on the basis of contract), with the copies thereof sent simultaneously to the SDRC.

The agencies authorized by SDRC shall, in light of the specific conditions promulgated, accept the applications on wheat, corn, rice, cotton and the relevant documents submitted, and transfer the qualified applications to the SDRC before Nov. 30th, with the copies thereof sent simultaneously to the MOFCOM.

(3) Distribution of quotas

Import tariff quotas shall be distributed on the basis of the quantity applied for by the applicants, their previous import performance, production capacity and other relevant commercial standards or on the basis of the form of drawing by coming order. The minimum quantity of distribution shall be determined on the basis of the

commercially feasible shipping quantity of each category of agricultural products.

The MOFCOM and the SDRC will, before Jan. 1st of each year, issue to the final users the *Certificates of Import Tariff Quotas of Agricultural Products* via their respectively authorized agencies, to which the “Special Seal of the MOFCOM for Certificate of Import Tariff Quotas of Agricultural Products” and the “Special Seal of the SDRC for Certificate of Import Tariff Quotas of Agricultural Products” shall be affixed.

The quotas for state-run trade shall be indicated on the *Certificate of Import Tariff Quotas of Agricultural Products*.

(4) Valid term of quotas

The annual import tariff quotas of agricultural goods shall be implemented since Jan. 1st of each year, and shall be valid within the year of the Gregorian calendar. The *Certificates of Import Tariff Quotas for Agricultural Products* shall be valid from Jan. 1st to Dec. 31st of its current year. The valid term of the *Certificates of Import Tariff Quotas for Agricultural Products* subject to the distribution form of drawing by coming order on the basis of contract shall be carried out in accordance with the detailed implementation rules promulgated.

For the agricultural products subject to import tariff quotas that are shipped out from the departing port before Dec. 31st of the year and shall arrive at the destination next year, the final user shall, by presenting the *Certificate of Import Tariff Quotas of Agricultural Products* and the relevant certifications, apply for term extension to the original agency that has issued the certificate. The said agency may extend the term after having examined the case, but the term may not be extended to a time later than the end of February of the next year.

(5) Implementation of quotas

The final users shall, pursuant to the relevant provisions of the State on import of the commodities concerned, sign the import contracts by themselves or entrust others to sign the contracts.

For the import of agricultural products for processing trade that is subject to the administration of tariff quotas, the customs shall handle the record-keeping procedures for the processing trade contracts by the *Certificate of Approval for Processing Trade* submitted by the enterprises, and handle the customs clearance procedures by the *Certificate of Import Tariff Quotas of Agricultural Products* submitted where “processing trade” has been indicated under the column of “trade modes”.

Where an enterprise of processing trade fails to re-export the processed products within the prescribed term, it shall go through the writing-off procedures for processing trade contracts within 30 days after the expiration of term. The customs will implement the procedures thereabout according to the relevant provisions on processing trade.

The *Certificate of Import Tariff Quotas of Agricultural Products* will apply the system of one certificate for several batches, that is, a final user in need of importing the products in several batches may go through the customs clearance procedures for several times by the *Certificate of Import Tariff Quotas of Agricultural Products*. A final user shall faithfully fill out the “Column for Final User’s Import” under the *Certificate of Import Tariff Quotas of Agricultural Products* and take the Certificate to the original Certificate issuing agency in exchange for the certificate for the part of quotas that have not gone through the customs clearance procedures.

The excess part of bulk cargos in a batch imported shall be no more than 5% of the batch.

The agricultural products entering the bonded warehouses, bonded zones, export processing zones from outside China and to which import tariff quotas are applied shall be subject to the examination before release and to the supervision and control conducted by the customs in accordance with the relevant provisions. For the agricultural products exiting or imported from outside the bonded warehouses, bonded zones, export processing zones and to which import tariff quotas are applied, the customs will handle the import procedures by the *Certificate of Import Tariff Quotas of Agricultural Goods* in accordance with the relevant provisions on the administration of import of goods.

A final user shall, within 20 office days after finishing the customs clearance procedures for the final batch of products whose quotas are indicated in the *Certificate of Import Tariff Quotas of Agricultural Products*, hand in the original of the first pages (customs procedure pages for the consignee) of the said Certificate signed and sealed by the customs to the original Certificate issuing agency.

A final user shall, before the end of January of the next year, return the original of the unused first pages (customs procedure pages for the consignee) of the Certificate of the current year to the original Certificate issuing agency.

(6) Adjustment of quotas

Where no contract is concluded before Aug. 15th of the current year for the state-run trade quotas of agricultural products distributed to a final user, the final user

may entrust a trade enterprise of any kind with the right of trade to import the products upon the approval of the MOFCOM or the SDRC in accordance with the division of administration as provided in Article 7 of the present Measures. A final user with the right of trade may also import the products directly.

Where a final user holding the Certificate of Import Tariff Quotas of Agricultural Products fails to conclude an import contract for all the quotas already drawn in the current year or fail to fulfill the contract already concluded, it shall return the unfinished quotas to the original Certificate issuing organ before Sep. 15th.

The term for applying for the tariff quotas to be redistributed for the import of agricultural products shall be from Sep. 1st to Sep. 15th of each year (with the exception of the distribution form of drawing by coming order on the basis of contracts). The MOFCOM and the SDRC will respectively promulgate the specific conditions for applying for the tariff quotas to be redistributed on the *International Business Daily*, the *China Economic Herald*, the MOFCOM website (<http://www.mofcom.gov.cn>) and the SDRC website (<http://www.sdpc.gov.cn>) one month before the application period. The applications shall be submitted to the MOFCOM or the SDRC via their respectively authorized agencies.

Sugar, wool and wool tops shall be subject to the promulgation of MOFCOM, and wheat, corn, rice and cotton shall be subject to the promulgation of SDRC.

A final user that has finished the import tariff quotas distributed of agricultural products before the end of October and has returned the originals of the first pages (customs procedure pages for the consignee) of the *Certificate of Import Tariff Quotas of Agricultural Products* may apply for the tariff quotas to be redistributed.

Before September, 30 of each year, the MOFCOM shall distribute the tariff quotas to be redistributed of bean oil, colza oil, palm oil, sugar, wool and wool tops to the final users (with the exception of the distribution form of drawing by coming order on the basis of contracts), and the SDRC shall distribute the tariff quotas to be redistributed of wheat corn, rice and cotton to the final users.

The tariff quotas to be redistributed shall, in light of the applying conditions promulgated, be distributed according to the form of drawing by coming order. The minimum quantity of distribution shall be determined on the basis of the commercially feasible shipping quantity of each category of agricultural products.

A final user who has obtained the redistributed quotas may entrust a trade enterprise of any kind with the right of trade to import the products. A final user with

the right of trade may also import the products directly.

(IV) Distribution of Import Tariff Quotas of Agricultural Products in 2015

1. Distribution of import tariff quotas of grains

The promulgation of quota quantities, application conditions and distribution principles of import tariff quotas of grains in 2015 is subject to the No.22 bulletin of 2014 issued by the SDRC of PRC. On Jan. 5th, 2015, the SDRC promulgated the information of enterprises applying for import tariff quotas of grains in 2015.

(1) Quota quantities

The import tariff quota quantities of grains in 2015 are: 9.636 million tons of wheat, accounting for 10% of non-state-run trade; 7.2 million tons of corn, accounting for 40% of non-state-run trade; 5.32 million tons of rice (including: 2.66 million tons of long-grain rice, and 2.66 million tons of medium and short-grain rice), accounting for 50% of non-state-run trade.

(2) Application conditions

The basic conditions of applicants for import tariff quotas of grains in 2015 are: have registered in the Administration for Industry and Commerce prior to Oct. 1st, 2014; be with good financial condition, tax records and integrity status; strictly implement the statistical system of grain circulation, and be subject to the provisions of minimum and maximum stock quantities for grain operators; during the period of 2012-2014, be with no violation records in the aspects such as customs, industry & commerce, tax affairs, foreign exchange, inspection & quarantine, grain circulation and environmental protection, no credit record of non-performing loan, and no actions violating the *Interim Measures for the Administration of Import Tariff Quotas of Agricultural Products*.

On the premise of such conditions above, applicants for import tariff quota of wheat must also meet one of the following conditions:

State-run trade enterprises;

Enterprises with actual import performance (excluding agent import) in 2014;

Flour manufacturing enterprises with wheat consumption more than 100,000 tons in 2013 or 2014;

Food manufacturing enterprises with flour consumption more than 50,000 tons in 2013 or 2014;

Enterprises engaged in the processing trade and using wheat or flour as the raw material, without actual import performance in 2014 but with the import-export operation right and the certificate of production capacity on processing trade provided by local commerce authorities.

Applicants for import tariff quota of corn and wheat must also meet one of the following conditions:

State-run trade enterprises;

Enterprises with actual import performance (excluding agent import) in 2014;

Feed manufacturing enterprises with corn consumption more than 50,000 tons in 2013 or 2014;

Other manufacturing enterprises with corn consumption more than 150,000 tons in 2013 or 2014;

Enterprises engaged in the processing trade and using corn as the raw material, without actual import performance in 2014 but with the import-export operation right and the certificate of production capacity on processing trade provided by local commerce authorities.

Applicants for import tariff quota of rice (the long-grain rice and the medium and short-grain rice need respective application) must also meet one of the following conditions:

State-run trade enterprises;

Enterprises with actual import performance (excluding agent import) in 2014;

Grain enterprises with the qualification of grain wholesale and retail, reaching the amount of rice sales more than RMB 100 million in 2013 or 2014;

Food manufacturing enterprises with rice consumption more than 50,000 tons in 2013 or 2014;

Enterprises engaged in the processing trade and using rice as the raw material, without actual import performance in 2014 but with the import-export operation right and the certificate of production capacity on processing trade provided by local commerce authorities.

The group enterprises with multiple processing plants must separately apply for and use the import quotas in the name of each independent processing plant. The trading enterprises applying for the import tariff quota of rice can choose to submit the

application in the name of group headquarters or subordinate enterprises, but the group headquarters and subordinate enterprises shall not submit the application in the meantime.

(3) Quota usage

The above import tariff quotas of grains must be used by applicants themselves, and the imported goods shall be processed and operated by the enterprises, among which the imported wheat and corn shall be processed for use by the plants; and the imported rice shall be organized for sales in the name of the enterprises.

2. Distribution of import tariff quota of cotton

The promulgation of quantity, application conditions and distribution principles of import tariff quota of cotton in 2015 is subject to the No.22 bulletin of 2014 issued by the SDRC of PRC.

(1) Quota quantities

The import tariff quota quantity of cotton in 2015 is 894,000 tons, among which the state-run trade accounts for 33%.

(2) Application conditions

The basic conditions of applicants for import tariff quota of cotton in 2015 are: have registered in the Administration for Industry and Commerce prior to Oct. 1st, 2014; be with good financial condition, tax records and integrity status; during the period of 2012-2014, be with no violation records in the aspects such as customs, industry & commerce, tax affairs, foreign exchange, inspection & quarantine and environmental protection, and with no credit record of non-performing loan; have performed social responsibilities related to business; Without actions violating the *Interim Measures for the Administration of Import Tariff Quotas of Agricultural Products*.

On the premise of such conditions above, applicants for import tariff quota of cotton must also meet one of the following conditions:

State-run trade enterprises;

Enterprises with actual import performance (excluding agent import) in 2014;

Cotton-spinning enterprises with spinning equipment more than 50,000 spindles.

3. Distribution of import tariff quota of sugar

The preparation of the quantity and application conditions of import tariff quota of

sugar in 2015 is subject to the *Detailed Rules and Regulations on Application and Distribution of Import Tariff Quota of Sugar in 2015* (No.66 Decree of the MOFCOM [2014]).

(1) Total quantity of tariff quota

The total quantity of import tariff quota of sugar in 2015 is 1.945 million tons, among which the state-run trade accounts for 70%.

(2) Types of applicant enterprises

State-run trade enterprises;

Central enterprises with the function of state reserve;

Enterprises with actual import performance holding the tariff quota of sugar in 2014 (hereinafter referred to as applicants with actual performance);

Sugar enterprises with daily processing capacity more than (equal to) 600 tons, registered capital more than (equal to) RMB 10 million, and annual sales of sugar more than (equal to) RMB 450 million;

Enterprises engaged in the processing trade, using sugar as the raw material.

(3) Basic conditions of applicants

Have registered in the Administration for Industry and Commerce prior to Oct. 1st, 2014, and conducted the publicity of annual reports;

During the period of 2012-2014, be with no violation records in the aspects of customs, foreign exchange, industry & commerce, tax affairs, quality inspection, social security, environmental protection, self-discipline, etc.;

Without actions violating the *Interim Measures for the Administration of Import Tariff Quotas of Agricultural Products* and the *Detailed Rules and Regulations on Application and Distribution of Import Tariff Quota of Sugar in 2014*.

(4) Application materials

Application report for import tariff quotas of agricultural products;

Application form for import tariff quotas of agricultural products;

Copy of business license for enterprise as a legal person (duplicate);

Copies of the 2014 *Certificates of Import Tariff Quotas of Agricultural Products* of sugar and the customs declaration for importation endorsed and signed by customs;

The tax clearance certificate of 2013 proofing the enterprise has paid tax by law.

The applicants with actual performance shall provide the first four items of materials above; the applicants without actual performance shall provide the first, second, third and fifth items of materials. If an applicant without actual performance

was constructed and put into operation after 2009, it shall also provide the competent department with an approval document of feasibility study report of the construction project (or an approval document of project proposals) and the completion acceptance report.

(5) Distribution of quota

If the total quantity of import tariff quota can satisfy applications of qualified applicants, the distribution of quota shall be accordant with the application quantities of applicants;

If the total quantity of import tariff quota cannot satisfy applications of qualified applicants, applicants with actual performance can get the preferential quota, and the distribution of quota shall be accordant with actual import performance, production capacity and sales of applicants in the last year, as well as other relevant commercial standards.

IV. List of China's Non-Agricultural Imports from Thailand

(I) Selection Method

The non-agricultural products, such as industrial products, account for the major share of China-ASEAN trade. With the further promotion of China-ASEAN free trade area, the tariff level of products like industrial products has been significantly reduced, with relatively high degree of trade & investment liberalization and facilitation. In accordance with the ordering of sum of non-agricultural products that China imported from Thailand in 2014, regarding the HS 2-bit code as a basis of classification, the non-agricultural products ranking at the top are selected in the first 10 Chapters; then regarding the HS 4-bit code as a basis of classification, the non-agricultural products ranking in the top 3 of the first 10 Chapters above are selected respectively.

(II) List of Main Non-Agricultural Imports

The list of main non-agricultural products China imported from Thailand in 2014 is formed according to UNCOMTRADE after the top 30 kinds of products are selected on the classification bases of HS 2-bit and HS 4-bit codes. In order to facilitate Thailand suppliers' export of relevant products to China, the supervision conditions of main non-agricultural products imported are listed in appendixes (see details in Appendix I and III).

List of China's Main Non-agricultural Imports from Thailand		
HS Code	Supervision Requirements	Article Description
85. 42		Electronic integrated circuits
85. 41		Diodes, transistors and similar semi-conductor devices; photosensitive semi-conductor devices, including photovoltaic cells whether or not assembled in modules or made up into panels; light emitting diodes; mounted piezo-electric crystals

85. 25		Transmission apparatus for radio-broadcasting or television, whether or not incorporating reception apparatus or sound recording or reproducing apparatus; television cameras; digital cameras and video camera recorders
84. 71		Automatic data processing machines and units Thereof; magnetic or optical readers, machines for transcribing data onto data media in coded form and machines for processing such data, not elsewhere specified or included
84. 73		Parts and accessories (other than covers, carrying cases and the like) suitable for use solely or principally with machines of headings No. 84. 69 to 84. 72
84. 14		Air or vacuum pumps, air or other gas compressors and fans; ventilating or recycling hoods incorporating a fan, whether or not fitted with filters
40 01		Natural rubber, balata, gutta-percha, guayule, chicle and similar natural gums, in primary forms or in plates, sheets or strip
40 05		Compounded rubber, unvulcanized, in primary forms or in plates, sheets or strip
40 11		New pneumatic tyres, of rubber
39 01		Polymers of ethylene, in primary forms
39 07		Polyacetals, other polyethers and epoxide resins, in primary forms; polycarbonates, alkyd resins, polyallyl esters and other polyesters, in primary forms
39 02		Polymers of propylene or of other olefins, in primary forms
29 02		Cyclic hydrocarbons
29 10		Epoxides, epoxyalcohols, epoxyphenols and epoxyethers, with a three-membered ring, and their hatogenated, sulphonated, nitrated or nitrosated derivatives
29 07		Phenols; phenol-alcohols
27 07		Oils and other products of the distillation of high temperature coal tar; similar products in which the weight of the aromatic constituents exceeds that of the non-aromatic constituents

27 10		Petroleum oils and oils obtained from bituminous minerals, other than crude preparations not elsewhere specified or included, containing by weight 70% or more of petroleum oils or of oils obtained from bituminous minerals, these oils being the basic constituents of the preparations; waste oils
27 13		Petroleum coke, petroleum bitumen and other residues of petroleum oils or of oils obtained from bituminous minerals
44 07		Wood sawn or chipped lengthwise, sliced or peeled , whether or not planed, sanded or finger jointed, of a thickness exceeding 6 mm
44 01		Fuel wood, in logs, in billets, in twigs, in faggots or in similar forms; wood in chips or particles; sawdust and wood waste and scrap, whether or not agglomerated in logs, briquettes, pellets or similar forms
44 10		Particle board and similar board of wood or other ligneous materials (for example, oriented strand board and waferboard) where or not agglomerated with resins or other organic binging, substances
90. 13		Liquid crystal devices not constituting articles provided for more specifically in other headings; lasers, other than laser diodes; other optical appliances and instruments, not specified or included elsewhere in this Chapter
90. 01		Optical fibres and optical fibre bundles; optical fibre cables, other than those of heading No 85. 44; sheets and plates of polarizing material; lenses (including contact lenses) , prisms, mirrors and other optical elements , of any material, unmounted, other than such elements of glass not optically worked
90. 31		Measuring or thecking instruments, appliances and machines, not specified or included elsewhere in this Chapter; profile projectors

71 03		Precious stones (other than diamonds) and semiprecious stones, whether or not worked or graded but not strung, mounted or set; ungraded precious stones (other than diamonds) and semi-precious stones, temporarily strung for convenience of transport
71 17		Imitation jewellery
71 13		Articles of jewellery and parts thereof , of precious metal or of metal clad with Precious metal
41 07		Leather further prepared after tanning or crusting, including parchment-dressed leather, of bovine (including buffalo) or equine animals, without hair on, whether or not split, other than leather of heading 41 14
41 04		Tanned or crust hides and skins of bovine (including buffalo) or equine animals, without hair on, whether or not split, but not further prepared ~In the wet state (including wet-blue)
41 06		Tanned or crust hides and skins of other animals, without wool or hair on, whether or not split, but not further prepared

V . Process Management of China’s Imports from Thailand

According to relevant laws and regulations of the State Administration for Quality Supervision and Inspection and Quarantine (AQSIQ) and the General Administration of Customs, the products that China imports from Thailand shall be subject to inspection and quarantine, and these imported goods can enter into the domestic market only after passing the supervision of customs.

(I) Inspection & Quarantine

During the entry inspection declaration, the inspection form for entry goods shall be filled in, and relevant documents such as the contracts, invoices and bills of lading shall be provided according to the *Provisions of Entry-Exit Inspection and Quarantine Declaration*. In addition, relevant documents shall be provided according to requirements in case of the following conditions.

1. Relevant certificates shall be provided for goods subject to safety quality licensing and sanitary registration, or required to be approved and reviewed.

2. For goods requiring quality inspection, foreign quality certificates or quality guarantees, product use instructions as well as relevant standards and technical data shall be provided; for goods delivered with samples, the reference samples must be attached; for goods settled accounts per grade or conditioned weight, an application of weight survey shall be submitted in the meantime.

3. During the entry inspection declaration for waste, the *Approval Certificate for Imported Waste* signed and issued by national environmental protection departments, the certificate for pre-shipment inspection signed and issued by authorized inspection agencies, etc. shall be provided.

4. For goods applying for damage survey, relevant documents which can prove the situation of damage, such as the damage report of tallying, business records of railways, air traffic accident reports or marine accident reports, shall also be provided.

5. For goods applying for weight (quantity) survey, the detailed list of weight, the list of tallying, etc. shall be also provided.

6. For goods through acceptance of receiving and using departments or tested by other units, the acceptance report or test results, the detailed list of weight, etc. shall be attached with the goods.

7. International travelers entering in the country shall fill in the quarantine declaration form on entry.

8. For animals and plants as well as corresponding products entering in the country, the trade contracts, invoices and certificates of origins shall be provided, and meanwhile, the official quarantine certificate of exporting countries or regions also must be provided; For those required to transact the approval procedures of entry quarantine, the entry quarantine permits for animals and plants shall also be provided.

9. During the inspection declaration of transited animals and plants as well as corresponding products, waybills and quarantine certificates officially provided by the exporting countries or regions shall be held; when transiting animals, transit permits for animals and plants signed and issued by the State Administration of Inspection and Quarantine shall also be submitted.

10. During the entry inspection declaration for transportation and containers, quarantine certificates shall be provided, and health conditions of relevant personnel shall be declared.

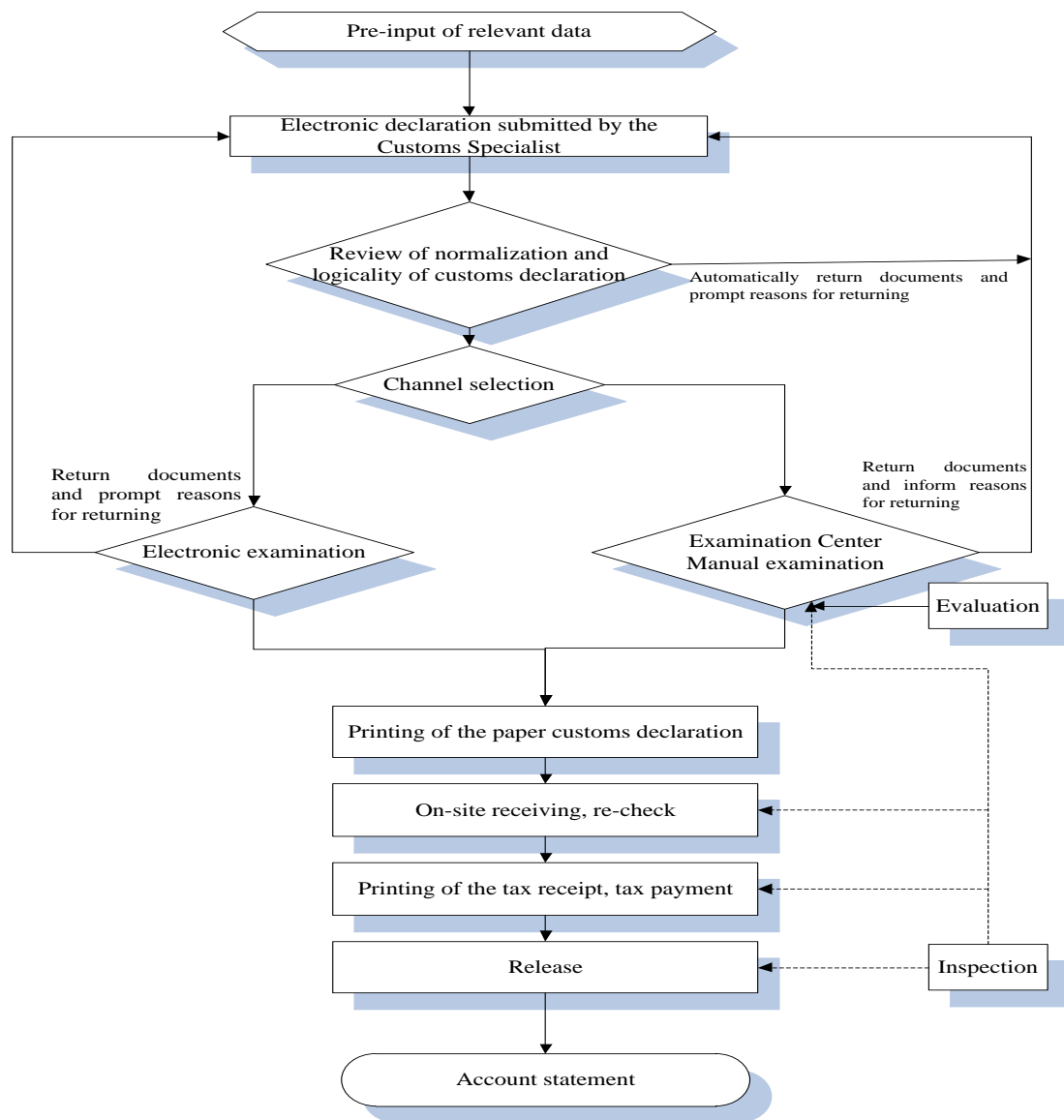
11. Entry passengers and traffic personnel carrying companion animals shall provide the quarantine certificate for entry animals and the vaccination certificate.

12. For articles banned from entry but need entry due to special requirements such as scientific research, the certificate of special permission signed and issued by the State Administration of Inspection and Quarantine must be provided.

13. For the entry of special articles, relevant approval documents or specified documents shall be provided.

(II) Customs Clearance

The procedure of customs clearance for China's imported products is composed of five basic links, including declaration, inspection, taxation, release and clearance. Declaration refers to the behaviors that a consignee or his agent of imported goods submits the verification certificate to customs and applies for the transaction of customs affairs. Inspection refers to the checks conducted by customs according to laws to the imported goods declared by the declarant, so as to confirm the conformity of documents, certificates and goods, check if there is any violation of laws and if the entry is legal, and prepare conditions for the next customs clearance procedure. Taxation means that customs charge the tariff for imported goods and the taxes for imported links according to relevant national policies, laws and regulations, including tariff classification, application of the tariff rate and import linkage tax rate, approval and determination of the duty-paying value, calculation and payment of taxes. Release is the last link of on-site operations of port customs supervision. Clearance means that customs implement inspections on the goods requiring follow-up management after the port release within a specified period, and deal with the goods requiring supplementary certificates and payment for overdue taxes till all of customs supervision procedures are fully completed. The flow chart of China's product import is as follow:



For the customs clearance of agricultural products subject to import quotas management, the *Certificates of Import Tariff Quotas of Agricultural Products* shall be submitted according to relevant provisions of the *Interim Measures for the Administration of Import Tariff Quotas of Agricultural Products* (No. 4 Decree of the Ministry of Commerce and the State Development Planning Commission [2003]).

(III) Cooperation between customs and inspection & quarantine departments

According to the *Notification on the Comprehensive Promotion of Cooperation between Customs and Inspection & Quarantine Departments Issued by the General*

Administration of Customs and the State Administration for Quality Supervision and Inspection and Quarantine (No.161 Decree of the General Administration of Customs and AQSIQ [2014]), since Aug. 1st, 2014, the “3 Ones” of cooperation between customs and inspection & quarantine departments has been comprehensively promoted to all directly competent customs and inspection & quarantine departments, all sites of customs clearance, and all goods and articles requiring customs declaration and inspection declaration pursuant to the laws, so as to achieve the maximum utilization of facilitation measures provided by customs and inspection & quarantine departments to benefit enterprises.

The “3 Ones” of cooperation between customs and inspection & quarantine departments refers to the “one-off declaration, one-off inspection and one-off release”. The “one-off declaration” refers to “one-off input and respective declarations”, which means that an enterprise only needs to input data for once, and the data will be respectively sent to customs and inspection & quarantine departments; the “one-off inspection” refers to “one-off unpacking that customs and inspection & quarantine departments jointly implement check/inspection & quarantine pursuant to the laws”, which means that both parties of customs and inspection & quarantine departments can jointly implement check/inspection & quarantine to the same batch of goods as required according to their different responsibilities and pursuant to the laws; the “one-off release” refers to “networking check and release of customs and inspection & quarantine departments”, which means that customs and inspection & quarantine departments respectively send the check and release information for goods arriving at ports, and the enterprise can transact procedures for taking delivery of goods by the check and release information of customs and inspection & quarantine departments.

Appendix I

List of Supervision Requirements of Customs

License or Official Document Codes	License or Official Document Names
1	Import Licence of the People's Republic of China
2	Import License for Dual-use Items and Technologies
3	Export License for Dual-use Items and Technologies
4	Export Licence of the People's Republic of China
5	Temporary Textiles Export Licence of the People's Republic of China
6	Prohibited Import of Used Mechanical and Electric Products
7	Automatic Import License of the People's Republic of China
8	Export Forbidden Items
9	Import Forbidden Items
A	Certificate of Inspection for Goods Inward
B	Certificate of Inspection for Goods Outward
D	Certificate of Inspection for Goods Inward(Used for Rough Diamonds)
E	Export Permit for Endangered Wild Animals
F	Import Permit for Endangered Wild Animals
G	Export License for Dual-use Items and Technologies(Directionality)
I	Psychotropic Drug Import and Export License
J	The export license or the people's Bank of China import approval of gold products
O	Automatic Import License (Used and New Mechanical and Electrical Products)
P	Certificate of Approval for Import of Wastes
Q	Drug Import Customs Clearance
S	Certificate for the Import and Export of Pesticides
T	License of Transporting Cash in Foreign Currency Inward and Outward
W	Import Authorization for Narcotic Drugs
X	Clearance Notification for Environmental Management on Import/Export of Toxic Chemicals
Z	Certificate of of Approval for the Import of Audio and Video Products or Claimed Programs
e	Certificate of Cotton Import Tariff Quota at Out-Quota Preferential Duty Rate
s	Certificate of the Use Identification of Goods under ITA Tax
t	Import Tariff Quota Certificate
v	Automatic Import License of the People's Republic of China (Processing Trade)
x	Export Licence of the People's Republic of China (Processing Trade)
y	Export Licence of the People's Republic of China (Small Amount of Border Trade)

Appendix II

Supervision Requirements of Customs of Main Agricultural Imports		
HS Code	Supervision Requirements	Article Description
07 14		Manioc, arrowroot, salep, Jerusalem artichokes, sweet potatoes and similar roots and tubers with high starch or inulin content, fresh, chilled, frozen or dried, whether or not sliced or in the form of pellets; sago pith -Manioc (cassava)
0714 1010	AB	-Fresh
0714 1020	AB	-dried
0714 1030	AB	---Chilled or frozen
		-Sweet potatoes
		-Fresh
0714 2011	AB	-for cultivation
0714 2019	AB	-Other
0714 2020	AB	-dried
0714 2030	AB	---Chilled or frozen
0714 3000	AB	-Yams(dioscoreae spp.)
0714 4000		-Taros(colocasia spp.)
0714 4000 01	AB	Fresh, chilled taros (colocasia spp.) (whether or not sliced or made granule; taros are also called yunai belong to Spath hyttum of the Araceae vegetables, classified into ground taros and river taros)
0714 4000 90	AB	Frozen, dried taros (colocasia spp.) (whether or not sliced or made granule; taros are also called yunai belong to Spath hyttum of the Araceae vegetables , classified into ground taros and river taros)
0714 5000	AB	-Yautia (Xanthosoma spp.)
		-Other
0714 9010	AB	-water thestnut
		---Lotus (<i>Nelumbo nucifera</i>) rootstock
0714 9021	AB	-for cultivation
0714 9029	AB	-Other
0714 9090		-Other
0714 9090 10	ABFE	Tubers of orchid family, fresh, chilled, frozen or dried

0714 9090 91	ABFE	Other endangered similar roots and tubers with high starch or inulin content (including sago pith, whether or not sliced or made gramule , fresh , chilled , frozen ,dried)
0714 9090 99	AB	Other similar roots and Tubers with high starch or inulin content(including sago pith whether or not sliced or in the form of pellets fresh, chilled, frozen, dried)
08 10		Other fruit, fresh
0810 1000	AB	-Strawberries
0810 2000	AB	-Raspberries, blackberries, mulberries and loganberries
0810 3000	AB	-Black, white or red currant and gooseberries
0810 4000	AB	-Cranberries, bilberries and Other Fruits of the genus <i>Vaccinium</i>
0810 5000	AB	- Kiwifruit
0810 6000	AB	-Durian
0810 7000	AB	-Persimmons
		-Other
0810 9010	AB	-Lythee
0810 9030	AB	-Longan
0810 9040	AB	-Rambutan
0810 9050	AB	-sugar apple
0810 9060	AB	---Carambola
0810 9070	AB	-Wax apple
0810 9080	AB	-Dragon fruit
0810 9090		-Other
0810 9090 01	AB	Chinese date , fresh
0810 9090 02	AB	Loquat , fresh
0810 9090 10	ABE	Fruit of elaeagnus mollis diels
0810 9090 90	AB	Other fruit, fresh
11 08		Starthes inulin
		-Starthes
1108 1100	AB	-wheat starch
1108 1200	AB	-Maize (corn) starch
1108 1300	AB	-Potato starch
1108 1400	AB	-Manioc (cassava) starch
1108 1900	AB	-Other Starthes
1108 2000	AB	-Inutin
10 06		Rice
		-Rice in husk (Paddy or rough)
		-Seed
1006 1011		-Long grain

1006 1011 01	4xAByt	Rice in husk (paddy or rough) , shien rice (<i>long-grained Non-glutinous rice</i>), seed (in-quota)
1006 1011 90	4xABv	Rice in husk (paddy or rough) , shien rice (<i>long-grained Non-glutinous rice</i>), seed (out-quota)
1006 1019		-Other
1006 1019 01	4xAByt	Other rice in husk (paddy or rough) , seed (in-quota)
1006 1019 90	xABy	Other rice in husk (paddy or rough) , seed (out-quota)
		-Other
1006 1091		-Long grain
1006 1091 01	4xAByt	Other rice in husk (paddy or rough), long grain (<i>long-grained Nonglutinous rice</i>) (in-quota)
1006 1091 90	4xABy	Other rice in husk (paddy or rough), long grain (<i>long-grained Nonglutinous rice</i>) (out-quota)
1006 1099		-Other
1006 1099 01	4xAByt	Other rice in husk (paddy or rough) (in-quota)
1006 1099 90	4xABy	Other rice in husk (paddy or rough) (out-quota)
		-Husked (brown) Rice
1006 2010		-Shien Rice
1006 2010 01	4xAByt	Husked (brown) rice, long grain(<i>long-grained Non-glutinous rice</i>) (in-quota)
1006 2010 90	4xABy	Husked (brown) rice, long grain (<i>long-grained Non-glutinous rice</i>) (out-quota)
1006 2090		-Other
1006 2090 01	4xAByt	Other husked(brown) rice (in-quota)
1006 2090 90	4xABy	Other husked (brown) rice (out-quota)
		-Semi-milled or wholly missed Rice, whether or not polished or glazed
1006 3010		---Long grain
1006 3010 01	4xAByt	Semi-milled or wholly milled rice, long grain (<i>long-grained Non-glutinous rice</i>) whether or not polished or glazed (in-quota)
1006 3010 90	4xABy	Semi-milled or wholly milled rice, long grain (<i>long-grained Non-glutinous rice</i>) [whether or not polished or glazed (out-quota)]
1006 3090		-Other
1006 3090 01	4xAByt	Other semi-milled or wholly milled rice [whether or not polished or glazed (in-quota)]
1006 3090 90	4xABy	Other semi-milled or wholly milled rice [whether or not polished or glazed (out-quota)]
		-Broken ERIC
1006 4010		---Long grain

1006 4010 01	4xAByt	Broken rice, long grain (long-graineri Non-glutinous rice) (in-quota)
1006 4010 90	4xABy	Broken rice, long grain (long-grained Non-glutinous rice) (out-quota)
1006 4090		-Other
1006 4090 01	4xAByt	Other broken rice (in-quota)
1006 4090 90	4xABy	Other broken rice (out-quota)
17 01		Cane or beet sugar and themically pure sucrose, in solid form -Raw sugar not containing added flavouring or colouring matter
1701 1200		-Beet sugar
1701 1200 01	ABt	Raw beet sugar not containing added flavouring or colouring matter[sugar whose content of sucrose by weight, in the dry state, corresponds to a polarimeter reading of less than 99.5 ° (in-quota)]
1701 1200 90	AB	Raw beet sugar not containing added flavouring or colouring matter[sugar whose content of sucrose by weight, in the dry state, corresponds to a polarimeter reading of less than 99.5 ° (out-quota)]
1701 1300		--Cane sugar in subheading Note 2 to this chapter
1701 1300 01	ABt	Of cane sugar in subheading note 2 to this chapter not containing added flavouring or colouring matter [whose content of sucrose by weight, in the dry state, corresponds to a polarimeter reading of 69 ° or more but less 93 ° (in - quota)]
1701 1300 90	AB	Of cane sugar in subheading note 2 to this chapter not containing added flavouring or colouring matter [whose content of sucrose by weight, in the dry state, corresponds to a polarimeter reading of 69 ° or more but less 93 ° (out - quota)]
1701 1400		-Other cane sugar
1701 1400 01	ABt	Other cane sugar not containing added flavouring or colouring matter[sugar whose content of sucrose by weight, in the dry state , corresponds to a polarimeter reading of less than 99.5 ° (in - quota)]
1701 1400 90	AB	Other cane sugar not containing added flavouring or colouring matter [sugar whose content of sucrose by weight, in the dry state, corresponds to a polarimeter reading of less than 99.5 ° (out - quota)]
		-Other

1701 9100		--Containing added flavouring or colouring matter
1701 9100 01	ABt	Cane or beet sugar and themically pure sucrose, containing added flavouring or colouring matter (in-quota)
1701 9100 90	AB	Cane or beet sugar and themically pure sucrose, containing added flavouring or colouring matter (out-quota)
		-Other
1701 9910		---Granulated sugar
1701 9910 10	ABt	Granulated sugar (in-quota)
1701 9910 90	AB	Granulated sugar (out-quota)
1701 9920		-Superfine sugar
1701 9920 01	BAt	Superfine sugar (in-quota)
1701 9920 90	BA	Superfine sugar (out-quota)
1701 9990		-Other
1701 9990 01	ABt	Other refined sugar (in-quota)
1701 9990 90	AB	Other refined sugar (out-quota)
35 05		Dextrins and other modified starthes (for example, pregelatinized or esterified starthes) glues based on starthes, or on dextrins or other modified starthes
3505 1000	A	-Dextrins and Other modified Starthes
3505 2000	A	-Glues
08 04		Dates, figs, pineapples, avocados, guavas, mangoes and mangosteens , fresh or dried
0804 1000	AB	-Dates
0804 2000	AB	-Figs
0804 3000		-Pineapples
0804 3000 01	AB	Pineapples, fresh
0804 3000 90	AB	Pineapples, dried
0804 4000	AB	-Avocados
		-Guavas, mangoes and mangosteens
0804 5010		---Guavas
0804 5010 01	AB	Guavas, fresh
0804 5010 90	AB	Guavas, dried
0804 5020		-Mangoes
0804 5020 01	AB	Mangoes, fresh
0804 5020 90	AB	Mangoes, dried
0804 5030	AB	-Mangosteens

03 06		Crustaceans, whether in shell or not, live, fresh, chilled, frozen, dried, salted or in brine; smoked crustaceans, whether or not cooked before or during the smoking process; crustaceans, in shell, cooked by steaming or by boiling in water, whether or not chilled, frozen, dried, salted or in brine flours, meals and pellets of crustaceans, fit for human consumption
0306 1100	AB	- Reef shrimp and shrimp (Palinurus, lobster, genus, Rock lobster genus)
0306 1200	AB	-Ao lobster(Ao lobster genus)
		--crabs
0306 1410	AB	-Swimming crab
0306 1490	AB	-Other
0306 1500	AB	-Norway Lobsters (Nehrops Norvegicus)
		--Cold-water shrimp and prawns (pandalus, spp., Crangon crangon)
		---Cold-water shrimp
0306 1611	AB	-Shelled
0306 1612	AB	-Other , pandaius borealis
0306 1619	AB	-Other
		---Cold-water prawns
0306 1621	AB	-Shelled
0306 1629	AB	-Other
		-Other shrimps and prawns
		-shrimps
0306 1711	AB	-Shelled
0306 1719	AB	-Other
		-prawns
0306 1721	AB	-Shelled
0306 1729	AB	-Other
		-Other including flours, meals and pellets of crustaceans, fit for human consumption
		-Freshwater crawfish
0306 1911	AB	-Shelled
0306 1919	AB	-Other
0306 1990	AB	-Other
		-not Frozen
		-Reef shrimp and shrimp (Palinurus, Lobster genus, Rock lobster; genus)
0306 2110	AB	-for cultivation
0306 2190	AB	-Other
		-Ao lobster(Ao lobster genus)

0306 2210	AB	-for cultivation
0306 2290	AB	-Other
		--Crabs
0306 2410	AB	-for cultivation
		-Other
0306 2491	AB	-Freshwater crabs, live
0306 2492	AB	-Swimming crab
0306 2499	AB	-Other
		-Norway Lobsters (Nephrops Norvegicus)
0306 2510	AB	-for cultivation
0306 2590	AB	-Other
		--Cold-water shrimp and prawns (pandalus spp., Crangon crangon)
0306 2610	AB	-for cultivation
0306 2620	AB	-prawns, Fresh or chilled
0306 2690		-Other
0306 2690 01	AB	Cold-water shrimp , fresh or chilled
0306 2690 90	AB	Cold-water prawns and shrimp, whether in shell or not, live, dried, salted or in brine (including smoked, whether in shell or not, whether or not cooked before or during the smoking process; in shell, cooked by steaming or by boiling in water)
		-Other shrimps and prawns
0306 2710	AB	-for cultivation
0306 2720	AB	-prawns , Fresh or chilled
0306 2790		-Other
0306 2790 01	AB	Other shrimp, fresh or chilled
0306 2790 90	AB	Other prawns and shrimp, whether in shell or not, live, dried, salted or in brine(including smoked, whether or not cooked before or during the smoking process in shell, cooked by steaming or by boiling in water)
		-Other including flours, meals and pellets of crustaceans, fit for human consumption
0306 2910	AB	-for cultivation
0306 2990	AB	-Other
10 05		Maize (corn)
1005 1000		-Seed
1005 1000 01	4xAByt	Maize (corn) seed (in-quota)
1005 1000 90	4xABy	Maize (corn) seed (out-quota)
1005 9000		-Other
1005 9000 01	4xAByt	Other maize (corn) (in-quota)
1005 9000 90	4xABy	Other maize (corn) (out-quota)

21 06		Food preparations not elsewhere specified or included
2106 1000	AB	-Protein concentrates and textured Protein substances
		-Other
2106 9010	AB	-Beverage bases
2106 9020	AB	---Compound alcoholic preparations of a kind used for the manufacture of beverages
2106 9030		-royal jelly, put up as tonic essences
2106 9030 10	ABFE	Royal jelly, put up as tonic essences containing composition of endangered plants
2106 9030 90	AB	Other royal jelly, put up as tonic essences
2106 9040	AB	---Coconut juice
2106 9050		-Seal oil capsules
2106 9050 10	ABEF	Endangered seal oil capsules
2106 9050 90	AB	Other seal oil capsules
2106 9090		-Other
2106 909001	AB	Milk protein partial hydrolysate formula, milk protein hydrolysis amino acid formula special depth formula, infant milk powder
2106 9090 10	ABEF	Other food preparations containing composition of endangered plants, not elsewhere specified or included
2106 9090 90	AB	Other food preparations, not elsewhere specified or included
23 01		Flours , meals and pellets, of meat or meat offal, of fish or of crustaceans, mollusks or other aquatic invertebrates, unfit for human consumption; greaves -Flours, meals and pellets, of meat or meat offal greaves -Flours and meals, of meat bones
2301 1011	AB	-Of bovine and sheep
2301 1019	AB	-Other
2301 1020	AB	---Greaves
2301 1090	AB	-Other
		-Flours, meals and pellets , of fish or of crustaceans, molluscs or other aquatic invertebrates
2301 2010	AB	-Flours and meals of fish, of a kind used in animal feeding
2301 2090	AB	-Other

03 03		Fish, frozen, excluding fish fillets and other fish meat of heading No. 03 04
		-Salmonidae , excluding Livers and roes
0303 1100	AB	-Sockeye salmon (red salmon) (<i>Oncorhynchus nerka</i>)
0303 1200	AB	-Other Pacific salmon (<i>Oncorhynchus gorbuscha</i> , <i>Oncorhynchus keta</i> , <i>Oncorhynchus tshawytscha</i> , <i>Oncorhynchus kisutch</i> , <i>Oncorhynchus masou</i> and <i>Oncorhynchus rhodurus</i>)
0303 1300	AB	-Atlantic salmon (<i>Salmo salar</i>) and Danube salmon (<i>Hucho hucho</i>)
0303 1400	AB	-Trout (<i>Salmo trutta</i> , <i>Oncorhynchus mykiss</i> , <i>Oncorhynchus clarki</i> , <i>Oncorhynchus aguabonita</i> , <i>Oncorhynchus gilae</i> , <i>Oncorhynchus apache</i> and <i>Oncorhynchus chrysogaster</i>)
0303 1900		-Other
0303 1900 10	ABE	Chuan-shan taimen (<i>hucho taimen</i>) (excluding liver and roes) frozen
0303 1900 20	ABE	Qinting lenok (<i>brachymystax lenok</i>) (excluding liver and roes) frozen
0303 1900 90	AB	Other salmonidae (excluding liver and roes) frozen (excluding livers and roes)
0303 2300	AB	-Tilapia (<i>Oreochromis</i> spp.)
0303 2400	AB	--Catfish (<i>Pangasius</i> spp., <i>Silurus</i> spp., <i>Clarias</i> spp., <i>Ictalurus</i> spp.)
0303 2500	AB	--Carp (<i>Cyprinus carpio</i> , <i>Carassius carassius</i> , <i>Ctenopharyngodon idellus</i> , <i>Hypophthalmichthys</i> spp. , <i>Cirrhinus</i> spp. , <i>Mylopharyngodon piceus</i>)
0303 2600		-Eel (<i>Anguilla</i> spp.)
0303 2600 10	ABE	Marbled eels , frozen (excluding livers and roes)
0303 2600 20	ABEF	European eels, frozen (excluding livers and roes)
0303 2600 90	AB	Other eels (<i>anguilla</i> spp.) , frozen (excluding livers and roes)
0303 2900		-Other
0303 2900 01	AB	Nile perch (<i>Lates niloticus</i>) , frozen (excluding livers and roes)
0303 2900 90	AB	Snakeheads (<i>Thanna</i> spp.) , frozen (excluding livers and roes)
		-Flatfish (<i>Pleuronectidae</i> , <i>Bothidae</i> , <i>Cynoglossidae</i> , <i>Soleidae</i> , <i>Scophthalmidae</i> and <i>Citharidae</i>) excluding livers and roes
		-Halibut (<i>Reinhardtius hippoglossoides</i> , <i>Hippoglossus hippoglossus</i> , <i>Hippoglossus stenolepis</i>)

0303 3110 暂	AB	---Greenland Halibut
0303 3190	AB	-Other
0303 3200 暂	AB	-Plaice (<i>Pleuronectes platessa</i>)
0303 3300	AB	-Sole (<i>Solea</i> spp.)
0303 3400	AB	-Turbot (<i>Psetta maxima</i>)
0303 3900	AB	-Other
		-Tunas (of the genus <i>thunnus</i>) (tuna genus) , skipjack or stripe-bellied bonito or belteol bonito (oceanic bonito) excluding livers and roes
0303 4100	AB	-Albacore or longfinned tunas (<i>Thunnus alalunga</i>)
0303 4200	AB	-Yellowfin tunas (<i>Thunnus albacares</i>)
0303 4300	AB	-Skipjack or belted bonito
0303 4400	ABU	-Bigeye tunas(<i>Thunnus obesus</i>)
		-Atlantic and pacific bluefin tunas (<i>Thunnus thynnus</i> , <i>Thunnus orientalis</i>)
0303 4510	ABU	-Atlantic bluefin tunas
0303 4520	AB	-pacific bluefin tunas
0303 4600	AB	-Southern bluefin tunas (<i>Thunnus maccoyii</i>)
0303 4900	AB	-Other
0303 5100 暂	AB	-Herrings (<i>Clupea harengus</i> , <i>Clupea pallasii</i>)
0303 5300	AB	-sardines (<i>Sardina pilchardus</i> , <i>Sardinites</i> spp.) , sardinella (<i>Sardinella</i> spp.) , brisling or sprats (<i>Sprattus sprattus</i>)
0303 5400	AB	-Mackerel (<i>Scomber scombrus</i> , <i>Scomber australis</i> , <i>Scomber japonicus</i>)
0303 5500	AB	-jack and horse mackerel (<i>Trachurus</i> spp.)
0303 5600	AB	--Cobia (<i>Rachycentron canadum</i>)
0303 5700	ABU	-Swordfish (<i>Xiphias gladius</i>) -Fish of the families <i>seriola</i> , <i>gadidae</i> , <i>macrouridae</i> , <i>melanonidae</i> , <i>merlucciidae</i> , <i>moridae</i> and <i>muraenolepididae</i> , excluding livers and roes
0303 6300 暂	AB	--Cod (<i>Gadus morhua</i> , <i>Gadus ogac</i> , <i>Gadus macrocephalus</i>)
0303 6400	AB	-Haddock (<i>Melanogrammus aeglefinus</i>)
0303 6500	AB	--Coalfish(<i>Pollachius virens</i>)
0303 6600	AB	-Hake (<i>Merluccius</i> spp., <i>Urophycis</i> spp.)
0303 6700	AB	-Alaska Pollack (<i>Theragra chalcogramma</i>)
0303 6800	AB	-Blue whittings (<i>Micromesistius poutassou</i> , <i>Micromesistius australis</i>)
0303 6900	AB	-Other
		-other fish , excluding Livers and roes
0303 8100		-Dogfish and Other sharks

0303 8100 10	ABEF	Whale shark (Rhincodon) , man-eating shark (Ccharodon), basking shark (Cetorhinus) (excluding livers and roes) , frozen
0303 8100 90	AB	Other dogfish and other sharks (excluding livers and roes) , frozen
0303 8200	AB	-Rays and skates(Rajidae)
0303 8300	ABU	-Toothfish (Dissostichus spp.)
0303 8400	AB	-Seabass (Dicentrarchus spp.)
		-Other
0303 8910	AB	-Scabber fish (Trichurius)
0303 8920	AB	-Yellow croaker(Pseudosicaena)
0303 8930	AB	-Tilapia
0303 8990		-Other
0303 8990 01	AB	Other perch, frozen (excluding livers and roes)
0303 8990 10	ABFE	Other endangered fish, frozen (excluding livers and roes)
0303 8990 90	AB	Other fish frozen (excluding livers and roes)
0303 9000		-Livers and roes
0303 9000 10	ABEF	Livers and roes of endangered fish , frozen
0303 9000 90	AB	Other livers and roes frozen
08 13		Fruit, dried, other than that of headings No. 08 01 to 08 06; mixtures of nuts or dried fruits of this Chapter
0813 1000	AB	-Apricots
0813 2000	AB	-Prunes
0813 3000	AB	-Apples
		-Other
0813 4010	AB	-Longans and Longan pulps
0813 4020	AB	-Persimmons
0813 4030	AB	-red jujubes
0813 4040	AB	-Preserved litchi
0813 4090		-Other
0813 4090 10	ABE	Fruit of wingfruit elaeagus (Elaeagus mollis Diels) , dried
0813 4090 90	AB	Other fruit dried (other than that of headings No.08 01 to 08 06)
0813 5000	AB	-Mixtures of nuts or dried Fruits of this Chapter
20 08		Fruit , nuts and other edible parts of plants, otherwise prepared or preserved, whether or not containing added sugar or other sweetening matter or spirit , not elsewhere specified or included

		-nuts, groundnuts and Other Seeds, whether or not mixed together
		--Ground-nuts
2008 1110	AB	---Ground-nuts kernels , in airtight containers
2008 1120	AB	-Roasted ground-nuts
2008 1130	AB	---Ground-nut butter
2008 1190	AB	-Other
		-Other , including Mixtures
2008 1910	AB	-Walnut meats, in airtight containers
2008 1920	AB	-Other nuts, in airtight containers
		-Other
2008 1991	AB	----thestnut Seed
2008 1992	AB	-Sesame
2008 1999		-Other
2008 1999 10	ABE	Korean pine-nuts, shelled, (not prepared or preserved by vinegar or acetic acid)
2008 1999 90	AB	Nuts and other seeds, (not prepared or preserved by vinegar or acetic acid) not elsewhere specified or included
		-Pineapples
2008 2010	AB	---in airtight containers
2008 2090	AB	-Other
		-Citrus fruit
2008 3010	AB	---in airtight containers
2008 3090	AB	-Other
		-Pears
2008 4010	AB	---in airtight containers
2008 4090	AB	-Other
2008 5000	AB	-Apricots
		-Therries
2008 6010	AB	---in airtight containers
2008 6090	AB	-Other
		-Peathes
2008 7010	AB	---in airtight containers
2008 7090	AB	-Other
2008 8000	AB	-Strawberries
		-Other including mixtures Other than those of subheading No. 2008 19
2008 9100	AB	-Palm hearts
2008 9300	AB	--Cranberry (Vaccinium macrocarpon vaccinium oxycoccos, vaccinium vitis-idaea)

2008 9700	AB	-Mixtures
		-Other
2008 9910	AB	-Lythee can
2008 9920	AB	---Longan can
		-Preparations of Seaweeds and Other alga
2008 9931	AB	-Seasoned Laver
2008 9932	AB	-salted , sea tangle
2008 9933	AB	-Pinnatifida salted
2008 9939	AB	-Other
2008 9940	AB	-Water thestnut in airtight containers
2008 9990	AB	-Other
08 03		Bananas, including plantains , fresh or dried
0803 1000	AB	-Plantains
0803 9000	AB	-Other
16 04		Prepared or preserved fish; caviar and caviar substitutes prepared from fish eggs
		-Fish whole or in pieces, but not minced
		-salmon
1604 1110	AB	-Atlantic salmon
1604 1190		-Other
1604 1190 10	AEB	Prepared or preserved sichuan tamen (Hucho taimen) (whole or in pieces, but not minced)
1604 1190 20	AEB	Prepared or preserved Qinting lenok (Brachymystax lernok) (whole or in pieces, but not minced)
1604 1190 90	AB	Prepared or preserved other salmon
1604 1200	AB	-Herrings
1604 1300	AB	-sardines sardinella brisling or sprats
1604 1400	AB	-Tuna, bonito or belted bonito (bonito)
1604 1500	AB	-mackerel
1604 1600	AB	-anchovies
1604 1700		-Eels
1604 1700 10	ABE	Prepared or preserved marbled eels (whole or in pieces, but not minced)
1604 1700 20	ABEF	Prepared or preserved europea eels (whole or in pieces, but not minced)
1604 1700 90	AB	Prepared or preserved other eels (whole or in pieces, but not minced)
		-Other
1604 1920	AB	-Tilapia
		---Ictalurus
1604 1931	AB	----Thannel catfish (Ictalurus punctatus)

1604 1939	AB	-Other
1604 1990		-Other
1604 1990 10	AFEB	Prepared or preserved endangered fish (whole or in pieces, but not minced)
1604 1990 90	AB	Prepared or preserved other fish(whole or in pieces, but not minced)
		-Other prepared or Preserved fish
		---in airtight containers
1604 2011		-Shark's fin
1604 2011 10	ABFE	Shark's fins of endangered shark (Cetorhinus) in airtight containers
1604 2011 90	AB	Other shark's of shark fins in airtight containers
1604 2019		-Other
1604 2019 10	ABFE	Endangered fish in airtight containers, other than whole or in pieces(other than shark's fins)
1604 2019 90	AB	Other fish in airtight containers , other than whole or in pieces(other than shark's fins)
		-Other
1604 2091		-Shark's fin
1604 2091 10	ABFE	Prepared or preserved shark's fins of endangered shark(Cetorhinus) (other than whole or in pieces, not in airtight containers)
1604 2091 90	AB	Prepared or preserved other shark's fins (other than whole or in pieces , not in airtight containers)
1604 2099		-Other
1604 2099 10	ABFE	Prepared or preserved endangered fish (Other than whole or in pieces, not in airtight containers, other than shark's fins)
1604 2099 90	AB	Other prepared or preserved fish(other than whole or in pieces, not in airtight containers, other than shark's fins)
		-Caviar and Caviar substitutes
1604 3100	ABFE	--Caviar
1604 3200	AB	--Caviar substitutes
22 02		Waters, including mineral waters and aerated waters, containing added sugar or other sweetening matter or flavoured, and other non-alcoholic beverages, not including fruit or vegetable juices of heading No. 20 09

2202 1000		-waters, including Mineral waters and aerated waters, containing added sugar or other sweetening matter or flavoured
2202 1000 10	ABEF	Waters, containing added sugar or other sweetening matter or flavoured of endangered animals and plant (including mineral waters and aerated water)
2202 1000 90	AB	Other waters , containing added sugan or other sweetening matter or flavoured (including mineral waters and aerated waters)
2202 9000		-Other
2202 9000 11	ABEF	Non-alcoholic beverages, in bulk, containing endangered animals and plants compositions (Other than fruit juices and vegetable juices of heading No. 2009)
2202 9000 19	AB	Other Non-alcoholic beverages, in bulk (Other than fruit juices and vegetable juices of heading No. 2009)
2202 9000 91	ABEF	Non-alcoholic beverages, with other packing containing compositions of endangered animals and plants (other than fruit juices and vegetable juices of heading No. 2009)
2202 9000 99	AB	Non-alcoholic beverages, with other packing (other than fruit juices and vegetable juices of heading No. 2009)
11 02		Cereal flours other than of wheat or maslin
1102 2000		-Maize (corn) flour
1102 2000 01	4ABtxy	Maize (corn) flour (in-quota)
1102 2000 90	4ABxy	Maize (corn) flour(out-quota)
		-Other
		-Rice flour
1102 9011		-of Long grain
1102 9011 01	4ABtxy	long grain (long-grained Non-glutinous rice flour in-quota)
1102 9011 90	4ABxy	long grain (long-grained Noglutinous rice flour out-quota)
1102 9019		-Other
1102 9019 01	4ABtxy	Other rice flour (in-quota)
1102 9019 90	4ABxy	Other rice flour (out-quota)
1102 9090	AB	-Other
12 09		Seeds, fruit and spores, of a kind used for sowing
1209 1000	AB	-sugar beet Seed
		-Seeds of forage plants

1209 2100	AB	-Lucerne (alfalfa) seed
1209 2200	AB	--Clover (Trifolium spp.) seed
1209 2300	AB	-Fescue Seed
1209 2400	AB	-Kentucky blue grass (Poa-pratensis L) seed
1209 2500	AB	-Rye grass (Lolium multiflorum Lam , Lolium perenne L) seed
		-Other
1209 2910	AB	-Beet Seed, excluding sugar Beet Seed
1209 2990	AB	-Other
1209 3000		-Seeds of herbaceous plants cultivated principally for their flowers
1209 3000 10	ABFE	Seeds of endangered herbaceous plants cultivated principally for their flowers
1209 3000 90	AB	Other seeds of herbaceous plants cultivated principally for their flowers
		-other
1209 9100	AB	--Vegetable Seeds
1209 9900		-Other
1209 9900 10	AFEB	Other endangered seeds, fruit and spores, of a kind used for sowing
1209 9900 90	AB	Other seeds, fruit and spores, of a kind used for sowing
23 03		Residues of starch manufacture and similar residues, beet-pulp, bagasses and other waste of sugar manufacture, brewing or distilling dregs and waste , whether or not in the form of pellets
2303 1000	AB	-Residues of starch manufacture and similar Residues
2303 2000	AB	-Beet-pulp , bagasses and Other Waste of sugar manufacture
2303 3000	AB	-Brewing or distilling dregs and Waste
2303 3000 10	AB	Distiller' s grains with or without Solubles
2303 3000 90	AB	Other brewing or distilling dregs and waste
15 20		Glycerol, crude glycerol waters and glycerol lyes
1520 0000	AB	Glycerol, crude glycerol waters and glycerol lyes
08 01		Coconuts, Brazil nuts and cashew- nuts, fresh or dried, whether or not shelled or peeled
		-Coconuts
0801 1100	AB	-Desiccated
0801 1200	AB	-in the inner shell(endocarp)
		-Other
0801 1910	AB	-Seedlings
0801 1990	AB	-Other

		-Brazil nuts
0801 2100	AB	--in shell
0801 2200	AB	-Shelled
		-Cashew nuts
0801 3100 暂	AB	--in shell
0801 3200	AB	-Shelled
03 07		mollusks, whether in shell or not, live, fresh, chilled, frozen, dried, salted or in brine; smoked mollusks, whether in shell or not, whether or not cooked before or during the smoking process flours , meals and pellets of mollusks , fit for human consumption
		-Oysters
		-Live, fresh or chilled
0307 1110	AB	-for cultivation
0307 1190	AB	-Other
0307 1900	AB	-Other
		-Scallops, including queen scallops, of the genera Pecten, Chlamys or Placopecten
		-Live, fresh or chilled
0307 2110		-for cultivation
0307 2110 10	ABE	Pearloyster (Pinctada maxima) , for cultivation
0307 2110 90	AB	Other scallops(including queen scallops) for cultivation)
0307 2190		-Other
0307 2190 10	ABE	Other pearloyster (Pinctada maxima) , live, fresh or chilled
0307 2190 90	AB	Other scallops (including queen scallops, excluding for cultivation) live , fresh or chilled
0307 2900		-Other
0307 2900 10	ABE	Other pearloyster (pinctada maxima), frozen, dried , salted or in brine (including smoked, in whether in shell or not, whether or not cooked before or during the smoking process)
0307 2900 90	AB	Other scallops (including queen scallops) , frozen, dried salted or in brine (including smoked , in whether in shell or not; whether or not cooked before or during the smoking process)
		Mussels (Mytilus spp., Perna spp.)
		-Live Fresh or chilled
0307 3110	AB	-for cultivation
0307 3190		-Other
0307 3190 01	AB	Mussels , fresh or chilled

0307 3190 90	AB	Other mussels live
0307 3900		-Other
0307 3900 01	AB	Mussels , frozen
0307 3900 90	AB	Other mussels, dried, salted or in brine (including smoked , in whether in shell or not whether or not cooked before or during the smoking process)
		-Cuttle fish (<i>Sepia officinalis</i> , <i>Rossia macrosoma</i> , <i>Sepiola</i> spp.) and squid (<i>Ommastrephes</i> spp. , <i>Loligo</i> spp., <i>nototodarus</i> spp., <i>Sepioteuthis</i> spp.)
		-Live, fresh or chilled
0307 4110	AB	-for cultivation
0307 4190	AB	-Other
0307 4900	AB	-Other
		-Octopus (<i>Octopus</i> spp.)
0307 5100	AB	-Live, fresh or chilled
0307 5900	AB	-Other
		-Snails, Other than sea Snails
0307 6010		-for cultivation
0307 6010 10	ABFE	Endangered snails other than sea snails , for cultivation
0307 6010 90	AB	Other snails other than sea snails , for cultivation
0307 6090		-Other
0307 6090 10	ABFE	Other endangered snails , other than sea snails
0307 6090 90	AB	Other snails other than sea snails, live, fresh, chilled, frozen dried salted or in brine (including smoked, in whether in shell or not, whether or not cooked before or during the smoking process)
		-Clam cockle and ark shell (families arcidae, arcticidae, cardiidae, donacidae, hiatellidae, mactridae, mesoclesmaticidae, myidae, semelidae, solecurtidae, solenidae, tridacnidae, veneridae)
		-Live, fresh or chilled
0307 7110		-for cultivation
0307 7110 10	ABEF	Tridacna stone , live, fresh or chilled, for cultivation
0307 7110 90	AB	Clam,cockle and ark shell (arcidae, arcticidae, cardiidae, donacidae, hiatellidae, mactridae, mesodesmatidae, myidae, mesociesmatidae, solecurtidae, solenidae, tridacnidae, veneridae), live, fresh or chilled , for cultivation
		-Other
0307 7191	AB	----Clam
0307 7199		-Other
0307 7199 10	ABEF	Tridacna stone , live fresh or chilled

0307 7199 90	AB	Clam cockle and ark shell (arcidae, arcticidae, cardiidae, donacidae, hiatellidae, maccridae, mesodesmatidae, myidae, mesodesmatidae, solecurtidae, solenidae, tridacnidae, venericlae) , live, fresh or chilled
		-Other
0307 7910	AB	---Ceam
0307 7990	AB	-Other
0307 7990 10	ABEF	Tridacna stone , frozen, dried, salted (including smoked , in whether in shell or not whether or not cooked before or during the smoking process)
0307 7990 90	AB	Clam cockle and ark shell (arcidae,arcticidae, cardiidea, donacidae, hiatellidae, mactridae, mesoclesmaticlae, myidae, mesodesmatidae, solecurtidae, solenidae, tridacnidae, veneridae) , frozen, dried, salted (including smoked, in whether in shell or not, whether or not cooked before or during the smoking process)
		-Abalone (ormer)
		-Live, fresh or chilled
0307 8110	AB	-for cultivation
0307 8190	AB	-Other
0307 8900	AB	-Other
		-other, including flours, meals and pellets, fit for human consumption
		-Live fresh or chilled
0307 9110		-for cultivation
0307 9110 10	AFEB	Endangered mollusks, live, fresh, chilled, for cultivation
0307 9110 90	AB	Other mollusks , live, fresh, chilled, for cultivation
0307 9190		-Other
0307 9190 10	ABEF	Other endangered mollusks, live, fresh, chilled
0307 9190 90	AB	Other mollusks, live, fresh , chilled
0307 9900		-Other
0307 9900 10	ABEF	Other endangered mollusks, frozen , dried , salted or in brine, including flours , meals and pellets of mollusks, fit for human consumption, excluding crustaceans,(including smoked , whether in shell or not whether or not cooked before or during the smoking process)

0307 9900 90	AB	Other mollusks, frozen, dried, salted or in brine , including flours, meals and pellets of mollusks, fit for human consumption, excluding crustaceans, (including smoked, whether in shell or not whether or not cooked before or during the smoking process)
06 03		Cut flowers and flower buds of a kind suitable for bouquets or for ornamental purposes, fresh, dried, dyed, bleached, impregnated or otherwise prepared
		-Fresh
0603 1100	AB	-Roses
0603 1200	AB	--Carnations
0603 1300	ABEF	-Orchids
0603 1400	AB	--Chrysanthemums
0603 1500	AB	-lily (Liliun spp.)
0603 1900		-Other
0603 1900 10	ABFE	Cut flowers and flower buds of endangered plants(of a kind suitable for bouquets or for ornamental purposes) fresh
0603 1900 90	AB	Other cut flower and flower buds (of a kind suitable for bouquets or for ornamental purposes) fresh
0603 9000		-Other
0603 9000 10	ABFE	Cut flowers and flower buds of endangered plants (of a kind suitable for bouquets or for ornamental purposes) , other than fresh dried, dyed or otherwise prepared, other than fresh
0603 9000 90	AB	Other cut flowers and flower buds(of a kind suitable for bouquets or for ornamental purposes) dried, dyed or otherwise prepared, other than fresh
08 11		Fruit and nuts, uncooked or cooked by steaming or boiling in water, frozen, whether or not containing added sugar or other sweetening matter
0811 1000	AB	-Strawberries
0811 2000	AB	-Raspberries, blackberries, mulberries, loganberries, black, white or red currants and gooseberries
		-Other
0811 9010	AB	---Thestnuts, in shell
0811 9090		-Other
0811 9090 10	ABE	Ginkgo, frozen
0811 9090 21	ABE	Korean pine-nuts, shelled frozen (whether or not shelled or peeled)

0811 9090 22	ABEF	Other endangered pine-nuts, shelled (whether or not shelled or peeled)
0811 9090 30	ABE	Semen torreyae, frozen
0811 9090 40	ABE	Fruit of wingfruit elaeagus (Elaeagus mollis Diels) , frozen
0811 9090 50	ABEF	Lodoicea maldivica nut, frozen
0811 9090 90	AB	Other fruit and nuts , frozen , not elsewhere specified or included
21 03		Sauces and preparations therefor; mixed condiments and mixes seasonings; mustard flour and meal and prepared mustard:
2103 1000	AB	-soya sauce
2103 2000	AB	-Tomato ketchup and Other Tomato sauces
2103 3000	AB	-Mustard flour and meal and Prepared Mustard
		-Other
2103 9010	AB	---Gourmet powder
2103 9020	AB	-Aromatic bitters, 44.2% - 49.2% of which is alcoholic Strength by volume, 1.5% -6% of which is spices and various ingredients by weight and 4% - 10% of which is sugar by weight
2103 9090	AB	-Other
15 15		Other fixed vegetable fats and oils (including jojoba oil and fractions thereof, whether or not refined, but not themically modified:
		-Linseed oil and its fractions
1515 1100	AB	--Crude oil
1515 1900	AB	-Other
		-Maize (corn) oil and its fractions:
1515 2100	AB	--Crude oil
1515 2900	AB	-Other
1515 3000	AB	-Castor oil and its fractions
1515 5000	AB	-Sesame oil and its fractions
		-Other
1515 9010	AB	-Jojoba oil and its fractions
1515 9020	ABS	-Neem oil and its fractions
1515 9030	AB	-Tung oil and its fractions
1515 9090		-Other
1515 9090 10	ABE	Korean pine seed oil (whether or not refined, but not themical modified)
1515 9090 90	AB	Other fixed vegetable fats and oils and fraction thereof oil (whether or not refined, but not themically modified

17 04		Sugar confectionery (including white chocolate) , not containing cocoa:
1704 1000	AB	-Thewing Gum, whether or not sugarcoated
1704 9000	AB	-Other
19 04		Prepared foods obtained by the swelling or roasting of cereals or cereal products (for example, corn flakes) cereals (other than maize (corn)) in grain form or in the form of flakes or other worked grains (except flour, groats and meal , precooked or otherwise prepared, not elsewhere specified or included:
1904 1000	AB	-Prepared foods obtained by the swelling or roasting of cereals or cereal products
1904 2000	AB	-Prepared foods obtained from unroasted cereal flakes or from mixtures of unroasted cereal flakes and roasted cereal flakes or swelled cereals
1904 3000	AB	-Bulgur wheat
1904 9000	AB	-Other
08 05		Citrus fruit, fresh or dried:
0805 1000	AB	-Oranges
		-Mandarins (including tangerines and satsumas) ; clementines, wilkings and similar citrus hybrids;
0805 2010	AB	---Chiao-Kan
0805 2020	AB	-Latifolia Citrus
0805 2090	AB	-Other
0805 4000		-Grapefruit , including pomelos
0805 4000 01	AB	Grapefruit fresh, including pomelos
0805 4000 90	AB	Crapefruit dried, including pomelos
0805 5000	AB	-Lemons (Citrus limon, Citrus limonum) and limes (Citrus aurantifolia)
0805 9000	AB	-Other

Appendix III

Supervision Requirements of Customs of Main Non-Agricultural Imports		
HS Code	Supervision Requirements	Article Description
85. 42		Electronic integrated circuits
		-electronic integrated circuits
8542. 3100		-Processors and controllers, whether or not combined with memories, converter, logic circuit, amplifier, clock and timing circuit or other circuit
8542. 3200		-Memories
8542. 3300		-Amplifier
8542. 3900		-Other
8542. 9000		-Parts
85. 41		Diodes, transistors and similar semi-conductor devices photosensitive semi-conductor devices, including photovoltaic cells whether or not assembled in modules or made up into panels light emitting diodes; mounted piezo-electric crystals:
8541. 1000		-Diodes, other than photosensitive or Light emitting diodes
		-Transistors, other than photosensitive transistors:
8541. 2100		-with a dissipation rate of less than I W
8541. 2900		-Other
8541. 3000		-Thyristors, diacs and triacs, other than photosensitive devices
		-Photosensitive semiconductor devices, including photovoltaic cells whether or not assembled in modules or made up into panels light emitting diodes:
8541. 4010		-Light emitting diodes
8541. 4020		-Solar cells
8541. 4090		-Other
8541. 5000		-Other Semiconductor devices
8541. 6000		-Mounted piezo-electric crystals
8541. 9000		-Parts
85. 25		Transmission apparatus for radio-broadcasting or television , whether or not incorporating reception apparatus or sound recording or reproducing apparatus; television cameras digital cameras and video camera recorders;
8525. 5000	0	-Transmission apparatus

		-Transmission apparatus incorporating reception apparatus;
8525. 6010	0	-Satellite earth station
8525. 6090	0	-Other
		-Television cameras, digital cameras and video camera recorders:
		-Television cameras:
8525. 8011		-For special purposes
8525. 8011 10	3A	Radiation - resistant television cameras (capable of resisting fradiance $> 5 \times 10^4$ Gy (Si) and not lowering operation quality)
8525. 8011 90	A	Other television cameras for special use
8525. 8012	A	-Broadcast quality not for special purposes
8525. 8013		-Other not for special purposes
8525. 8013 ^暫 01		Camera components for cellphones (including lens + CCD/CMOS + digital signal processing electric circuit)
8525. 8013 ^暫 02		High definition cameras (Must meet the following three conditions: 1. lens element must used Five floors Class lenses; 2. used USB2. 0 high speed interface; 3. hardware sensor pixel $\geq 130W$)
8525. 8013 90		Other telecameras not for special use and other camera components (the latter is composed of Nonbroadcast - quality lens + CCD/CMOS + digital signal processing electric circuit)
		-Digital cameras;
8525. 8021		-for special purposes
8525. 8022		-Single lens reflex not for special purposes
8525. 8025		not special purpose other interchangeable lens digital camera
8525. 8029		-Other not for special purposes
		---Video camera recorders:
8525. 8031	A	-for special purposes
8525. 8032	A	-Broadcast quality not for special purposes
8525. 8033	A	-Household type not for special purposes
8525. 8039	A	-Other not for special purposes
84. 71		Automatic data processing machines and units thereof magnetic or optical readers, machines for transcribing data onto data media in coded form and machines for processing such data, not elsewhere specified or included
		-Portable Automatic data processing machines, weighing not more than 10kg, consisting of at least a central processing unit, a keyboard and a display:

8471. 3010	A	-Panel computer
8471. 3090	A	-Other
		-Other Automatic data processing machines
		--Comprising in the same housing at least a Central processing unit and an input and output unit, whether or not combined:
8471. 4110	3	---mainframes
8471. 4120	3	-mini-computers
8471. 4140	A	-Microprocessings
8471. 4190		-Other
		-Other, presented in the form of systems
8471. 4910	3	-mainframes
8471. 4920	3	-mini-computers
8471. 4940		-Microprocessings
		-Other
8471. 4991		-Processing machines for the distributed control system
8471. 4999		-Other
		-Processing units other than those of subheading No. 8471. 41 or 8471. 49, whether or not containing in The same housing one or two of the following types of unit storage units, input units, output units:
8471. 5010	3	-mainframes
8471. 5020	3	-mini-computers
8471. 5040		-Microprocessings
8471. 5040 01		Microprocessings, with display and host (whether or not containing in the same housing one or two of storage units, input or output units)
8471. 5040 90		Other processing unit of microprocessings (whether or not containing in the same housing one or two of storage units, input or output units)
8471. 5090		-Other
		— Input or output units, whether or not containing storage units in the same housing;
8471. 6040		-Terminating machines for the huge computers, mainframes and mini-computers
8471. 6050		-Scanner
8471. 6060		-Digitizer
		-Keyboards, mouses;
8471. 6071		-Keyboards
8471. 6072		-Mouses
8471. 6090		-Other
		-Storage units

8471. 7010		-Rigid disk drivers
8471. 7020		-Floppy disk drivers
8471. 7030		---CD drivers
8471. 7030 10		CD-R drivers (for automatic data processing machines)
8471. 7030 90		Other CD drivers (for automatic data processing machines)
8471. 7090		-Other
8471. 8000		-Other units of Automatic data processing machines
8471. 9000		-Other
8471. 9000 10		CD - R machines used exclusively for copying (also called CD repeaters)
8471. 9000 90		Magnetic or optical readers, not elsewhere specified or included (including machines for transcribing data onto data media in coded form and machines for processing such data)
84. 73		Parts and accessories (other than covers, carrying cases and the like) suitable for use solely or principally with machines of headings No. 84. 69 to 84.72:
8473. 1000		-Parts and accessories of the machines of heading No. 84.69 -Parts and accessories of the machines of heading No. 84.70:
8473. 2100		-of the electronic calculating machines of subheading No. 8470.10, 8470.21 or 8470.29
8473. 2900		-Other
		-Parts and accessories of the machines of heading No. 84.71:
8473. 3010		-Of the machines of subheading 8471.4110, 8471.4120, 8471.4910. 8471.4920, 8471.5010, 8471.5020, 8471.6090, 8471.7010, 8471.7020 , 8471.7030 and 8471.7090
8473. 3090		-Other
		-Parts and accessories of the machines of heading No. 84.72:
8473. 4010 暂		-Banknote dispenser of automated teller
8473. 4090		-Other
8473. 409001		Parts and accessories of banknote sorters
8473. 4090 90		Parts and accessories of other office machines
8473. 5000		-Parts and accessories equally suitable for use with machines of two or more of the heading No. 84.69

		to 84.72
84. 14		Air or vacuum pumps, air or other gas compressors and fans; ventilating or recycling hoods incorporating a fan, whether or not fitted with filters:
8414. 1000 暂		-Vacuum Pumps
8414. 1000 暂 10	3	Corrosion-resisting vacuum pumps (flow capacity > 5m ³ /h, with a contact-surface of special corrosion-resisting materials)
8414. 1000 20	3	Vacuum pumps (aspirating hole 38cm, speed≥ 15 kl/s , capacity < 10 ⁻⁴ absolute vacuum degree
8414. 1000 30	3	Vacuum pumps, suitable to be used in UF6 atmosphere (made of or lined with aluminum, nickel or alloys containing more than 60% nickel)
8414. 1000 40	3	Vacuum pump whose specially designed or produced air - exhausting capacity 5m ³ /min (especially used for the diffusion and concentration of isotope gas)
8414.1000 50	3	Vacuum pumps, suitable to be used in UF6 atmosphere (can be sealed with fluorine-carbon or can be used with other special working fluid)
8414. 1000 90		Other vacuum pumps
8414. 2000		-Hand or foot operated pumps
		-Compressors of a kind used in refrigerating equipment;
		-Driven by a Motor;
8414. 3011		-For refrigerators or freezers, of a motor power not exceeding 0.4kW
8414. 301101	AB	Infinitely variable speed compressor for refrigerators or freezers, motor power≤0. 4kW
8414. 3011 90	AB	Other small electromotor refrigerator or freezers compressor (small referring a motor power≤0. 4kW)
8414. 3012		-for refrigerators or freezers, of a motor power exceeding 0.4kW but not exceeding 5kW
8414. 3013		-for air conditioning machines, of a Motor power exceeding 0.4kW but not exceeding 5kW
8414. 301301	A	Infinitely variable speed compressor for air for air conditioning machines conditioners machinery 0.4 kW < power≤5kW
8414. 301302	A	Constant speed compressor for air conditioner machinery, 0. 4kW < power≤5kW
8414. 3013 90	A	Other compressors for small motor-driven compressors for air conditioning machinery (0.4kW < rated

		power≤5kW)
8414. 3014		-for air conditioning machines, motor power > 5kW
8414. 3014 ^暂 01	AB	Infinitely variable speed compressor for air conditioning machines motor power > 5kW
8414. 301402	AB	Constant speed compressor for air conditioning machinery, motor power > 5kW
8414. 3014 90	AB	Other large motor - driven compressors for air conditioners (large referring a motor power > 5kW)
8414. 3015		-For refrigerators or freezers. motor power > 5 kW
8414. 3015 ^暂 01	AB	Motor-driven infinitely variable speed compressor motor power > 5kW (for freezing and refrigerating equipment)
8414. 3015 ^暂 02	AB	Motor-driven constant speed compressor, motor power > 5kW (for freezing and refrigerating equipments)
8414. 3015 90	B	Other large motor-drive compressors for freezing or refrigerating equipments(large referring a motor power>5kW)
8414. 3019		-Other
8414. 3019 ^暂 01	A	Other infinitely variable speed compressor for refrigerating equipments
8414. 3019 ^暂 02	A	Other constant speed compressor for refrigerating equipments
8414. 3019 90	A	other motor-driven compressor for refrigerating equipments
8414. 3090		---Compressor by a non-motor
8414. 3090 10		Compressors for auto air conditioners
8414. 3090 90		Other non - motor - driven compressors for refrigeration equipments
8414. 4000		-Air Compressors mounted on a wheeled chassis for Lowing
		-Fans:
		-Table, floor, wall, window. ceiling or roof fans, with a self-contained electric motor of an output not exceeding 125 W:
8414. 5110	A	---Ceiling or roof fans
8414. 5120	A	-Window fans
8414. 5130		-Repeating front louver fan
		-Other:
8414. 5191	A	-Table fans
8414. 5192	A	-Floor fans
8414. 5193	A	-Wall fans
8414. 5199		-Other

		-Other:
8414. 5910	A	---Ceiling or roof fans
8414. 5920	A	-Window fans
8414. 5930		---Centrifugal ventilation fans
8414. 5990		-Other
8414. 5990 10	A	Root's blower
8414. 5990 20	A	Blower, suitable to be used in UF ₆ atmosphere, extraction capability $\geq 2\text{m}^3/\text{min}$ (axial centrifugal fans or positive-discharge fans, pressure ratio between 1. 2:1 and 6:1)
8414. 5990 30	A	Blower, suitable to be used in UF ₆ atmosphere, extraction capability $\geq 2\text{m}^3/\text{min}$ (axial centrifugal fans or positive-discharge fans, pressure ratio between 1. 2:1 and 6:1)
8414. 5990 40	3A	Blower, extraction capability $\geq 56\text{m}^3/\text{S}$ (one-stage, low-pressure centrifugal blowers used for cycling hydrogen sulfide gas)
8414. 5990 50		Axial flow fans for heat elimination of electronic products
8414. 5990 91	A	other desk fans, floor - standing fans and wall -mounted fans (electric output power > 125 w)
8414. 5990 99	A	Other fans -Hoods having a maximum horizontal side not exceeding 120cm:
8414. 6010		-Range hoods
8414. 6090		-Other
8414. 6090 11		Biological safety cabinets (conform to The biological safety criterion of level - III as stipulated by WHO, the longest sides covered $\leq 120\text{ cm}$)
8414. 6090 12		Active (soft) isolating device, glove boxes (up to standards similar to biological safety criterion of level - III, the longest sides covered $\leq 120\text{ cm}$)
8414. 6090 13		Laminar flow hoods (vertical closed ventilation hoods, up to standards similar to biological safety criterion of level - III, the longest sides covered $\leq 120\text{ cm}$)
8414. 6090 14		Absorbing tower (subject to regulation of sensitive items, the longest sides covered $\leq 120\text{ cm}$)
8414. 6090 15		HEPA closed cleaning equipment with fans (HEPA referring high efficiency particulate air filter, the longest sides covered $\leq 120\text{cm}$)
8414. 6090 16		Anaerobe Cabinet (conform to the biological safety criterion of level – III, hoods having a maximum

		horizontal side not exceeding 120cm)
8414. 6090 90		Other ventilating or recycling hoods with the side length $\leq 120\text{cm}$ (meaning the maximum side length $\leq 120\text{cm}$, fitted with a fan)
		-Other:
8414. 8010		-free piston generators for gas turbines
8414. 8020		---CO ₂ compressors
8414. 8030		-Supercharger for engines
8414.8030 暫 01		Passenger car mechanical supercharger
8414. 8030 90		Supercharger for engine
8414. 8090		-Other
8414. 8090 10		Compressors, suitable to be used in UF ₆ atmosphere , extraction capability $> 1\text{m}^3/\text{min}$ (axial centrifugal or positive displacement compressors, pressure ratio between 2:1 and 6:1)
8414. 8090 20		UF ₆ /carrier gas compressors for MLIs, suitable to be used in UF ₆ atmosphere (UF ₆ /carrier mixed gases compressors for MLIs, suitable to be used in UF ₆ atmosphere)
8414. 8090 30		Compressors for hydrogen sulfide circulation, draft $\geq 56\text{m}^3/\text{s}$ (one-stage, low-pressure centrifugal blowers used for cycling hydrogen sulfide gas)
8414. 8090 40		Compressor, suitable to be used in UF ₆ atmosphere , extraction capability $\geq 2\text{m}^3/\text{min}$ (axial centrifugal or positive-displacement compressors, pressure ratio between 1. 2:1 and 6:1)
8414. 8090 51		Other biological safety cabinet (conform to the biological safety criterion of level - III as stipulated by WHO)
8414. 8090 52		Other active (soft) isolating device and other glove boxes (up to standard similar to biological safety cabinet of level III)
8414. 8090 53		Other Laminar flow hoods (vertical closed ventilation hoods, up to standards similar to biological safety criterion of level - III)
8414. 8090 54		Absorbing Lower (subject to regulation of sensitive items)
8414. 8090 55	3	Other HEPA closed cleaning equipment with fans (HEPA referring high efficiency particulate air filter)
8414. 8090 56	3	other anaerobe Cabinet (conform to the biological safety criterion of level- III)
8414. 8090 90		Other air pumps, air compressors and ventilating hoods (ventilating or recycling hoods incorporating fan, having a maximum horizontal side $> 120\text{cm}$)

		-Parts
		-Of the machines of subheadings No. 8414. 3011 to 8414.3014 and 8414.3090:
8414. 9011~		---In take valve leaf or discharge valve leaf
8414. 9019~		-Other
8414. 9020~		-Of the machines of subheadings No. 8414.5110 to 8414.5199 and 8414.6000
8414. 9090		-Other
8414. 9090 10	3	Molecular pump static component of gas centrifuge , Specialized design and manufacture, interior has been processing extrusion screw groove and processing chamber of the pump body
8414. 9090 90		Other parts only listed in Heading No. 8414
40 01		Natural rubber, balata, gutta-percha, guayule, chicle and similar natural gums, in primary forms or in plates, sheets or strip
4001 1000	AB	-natural rubber latex whether or not prevulcanized
		-Natural rubber in other forms
4001 2100	AB	-Smoked sheets
4001 2200		-Technically specified natural rubber (TSNR)
4001 2900		-Other
4001 3000		-Balata, gutta-percha, guayule, chicle and similar natural gums
40 05		Compounded rubber, unvulcanized, in primary forms or in plates, sheets or strip
4005 1000		-Compounded with Carbon black or Silica
4005 2000		-Solutions dispersions other than those of subheading No. 4005 10
		-Other
4005 9100		-Plates, sheets and strip
4005 9900		-Other
40 11		New pneumatic tyres, of rubber
4011 1000		-Of a kind used on motor cars (including station wagons and racing cars)
4011 1000 10	A	New pneumatic radial tire , of rubber of a kind used on motor cars (including station wagons and racing cars)
4011 1000 90	A	New pneumatic tyres of rubber, other than radial tire of a kind used on motor cars (including station wagons and racing cars)
4011 2000		-of a kind used On buses or lorries
4011 2000II	A	New pneumatic radial tire of rubber, cross-section

		widch30 inches , of a kind used on buses or lorries
4011 200019	A	New pneumatic tyres, of rubber, Non radial tire, for passenger cars or trucks with sectional width \geq 30 inch
4011 2000 91	A	New pneumatic radial tire, of rubber of a kind used on other huses or lorries
4011 2000 99	A	Other new pneumatic tyre of rubber, other than radial Lire for other passenger cars or trucks
4011 3000		-Of a kind used on aircraft
4011 4000	A	-of a kind used On motorcycles
4011 5000		-of a kind used On bicycles
		-Other, having a "herring-bone" or similar tread
4011 6100		-of a kind used On agricultural or forestry vehicles and machines
4011 6100II	A	New pneumatic radial tire of rubber, " herring- bone" tread, cross-section width \geq 24 inches, of a kind used on agricultural or forestry vehicles and machines
4011 610019	A	New pneumatic tyres, of rubber, Non radial tire," herring - bone " tread cross - section width \geq 24inchof a kind used on agricultural or forestry vehicles and machines
4011 6100 91	A	other new pneumatic radial tire, of rubber, " herring-bone" tread of a kind used on agricultural or forestry vehicles and machines
4011 6100 99	A	Other new pneumatic tyres, of rubber Non radial tire " herring-bone" tread, other than radial-ply tyres, of a kind used on agricultural or forestry vehicles and machines
4011 6200		-of a kind used On construction or industrial handling vehicles and machines and having a riru size not exceeding 6lcm
4011 6200 11	A	New pneumatic tyres of rubber " herring-bone" tread , radial tire cross-section width 24 inches, of a kind used on construction or industrial in ~6lcm
4011 6200 19	A	" Herring - bone " tread , Non radial tire , cross - section width 24 inthes , of a kind used on construction or industrial, rim \leq 6lcm
4011 6200 91	A	Other new pneumatic tyres of rubber, " herring-bone " tread radial tire of a kind used on construction or industrial, rim \leq 6lcm
4011 6200 99	A	Other new pneumatic tyres of rubber, "herring-bone " tread , Non radial tire of a kind used on construction or industrial rim \leq 6lcm

4011 6300		-of a kind used On construction or Industrial handling vehicles and machines and having a rim size exceeding >6lcm
4011 6300 11	A	New pneumatic tyres of rubber, " herring-bone " tread radial tire, cross-section width \geq 24 inches, of a kind used on construction or industrial, rim >6lcm
4011 630019	A	New pneumatic Lyres of rubber," herring - bone" tread radial Lire , cross - section width 24inch , of a kind used on construction or industrial , rim > 61 cm
4011 6300 91	A	other new pneumatic tyres of rubber, " herring- bone " tread radial tire of a kind used on construction or industrial , rim > 61 cm
4011 6300 99	A	Other new pneumatic tyres of rubber , " herring-bone" tread , Non radial tire of a kind used on construction or industrial rim > 6lcm
4011 6900		-Other
4011 6900 11	A	New pneumatic tyres of rubber, " herring-bone " tread radial tire , cross-section width \geq 30 inches, of a kind other use
4011 690019	A	New pneumatic tyres of rubber," herring - bone" tread Non radial tire, cross - section width 30inch , of a kind other use
4011 6900 91	A	Other new pneumatic tyres of rubber, " herring- bone" tread, radial tire of a kind other use
4011 6900 99	A	New pneumatic Lyres of rubber, " herring-bone " tread Non radial tire of a kind other use
		-Other
4011 9200		-of a kind used On agricultural or forestry vehicles and machines
4011 9200 11		New pneumatic tyres of rubber, radial tire other than " herring-bone " tread cross - section width \geq 24 inches of a kind used on agricultural or forestry vehicles and machines
4011 9200 19		New pneumatic tyres of rubber other ihan "herring-bone" tread or radial tire cross-section width \geq 24 inches, of a kind used on agricultural or forestry vehicles and machines
4011 9200 91		New pneumatic tyres of rubber, radial tire, other than "herring-bone" tread of a kind used on agricultural or forestry vehicles and machines
4011 9200 99		New pneumatic tyres of rubber other than " herring-bone" tread or radial tire of a kind used on

		agricultural or forestry vehicles and machines
4011 9300		-of a kind used On construction or industrial handling vehicles and machines and having a rim size Not exceeding 61cm
4011 9300 11		New pneumatic tyres of rubber, other than " herring-bone" tread, radial tire cross-section width 24 inches, rim≤61cm, of a kind used on construction or industrial
4011 9300 19		New pneumatic tyres of rubber, other than " herring-bone" tread or radial tire, cross-section width 24 inches, rim≤61cm, of a kind used on construction or industrial
4011 9300 91		New pneumatic tyres of rubber, other than " herring-bone" tread, radial tire rim≤ 61cm of a kind used on construction or industrial
4011 9300 99		New pneumatic tyres of rubber, other than " herring-bone" tread or radial tire , rim≤61cm, of a kind used on construction or industrial
4011 9400		-Of a kind used on construction or industrial handling vehicles and machines and having a rim size exceeding > 61 cm
4011 9400 11		New pneumatic tyres of rubber, radial tire, other than "herring-bone" tread cross-section width 24 inches, rim >61cm, of a kind used on construction or industrial
4011 9400 19		New pneumatic tyres of rubber, other than " herring-bone" tread or radial tire, cross-section width≥ 24 inches , rim > 61 cm , of a kind used on construction or industrial
4011 9400 91		New pneumatic tyres of rubber, radial tire, other than "herring_bone" tread rim >61cm, of a kind used on construction or industrial
4011 9400 99		New pneumatic tyres of rubber, other than " herring-bone" tread or radial tire, rim > 61mn, of a kind used on construction or industrial
4011 9900		-Other
40119900t0II		New pneumatic tyres of rubber, other than " herring-bone" tread or radial tire, cross-section width≥ 30 inches, of a kind other use
4011 990019		New pneumatic tyres of rubber, other than " herring-bone" tread or radial tire, cross-section width≥30 inches, of a kind other use
4011 9900 91		Other new pneumatic tyres of rubber, other than

		"herring-bone" tread or radial tire of a kind other use
4011 9900 99		Other new pneumatic tyres of rubber, other than "herring-bone" tread or radial tire of a kind other use
39 01		Polymers of ethylene , in primary forms
3901 1000		-Polyethylene having a specific gravity of less than 0. 94
3901 1000 暂 01		Polyethylene having a specific gravity of less than 0 .94 , in primary forms (CIF > USD3 800/ton)
3901 1000 90		Polyethylene having a specific gravity of less than 0 .94 , in primary forms
3901 2000		-Polyethylene having a specific gravity of 0. 94 or more
3901 200001		Polyethylene having a specific gravity of 0.94 or more in primary forms(CIF > USD3800/ton)
3901 2000 90		Polyethylene having a specific gravity of 0.94 or more , in primary forms
3901 3000		-Ethylene-Vinyl acetate copolymers
		-Other
3901 9010		-Ethylene-propylene copolymers
3901 9020		-Linearity Low-density polyethylene
3901 9090		-Other
39 07		Polyacetals, other polyethers and epoxide resins, in primary forms polycarbonates, alkyd resins, polyallyl esters and other polyesters, in primary forms
		-Polyacetals
3907 1010		-Polyoxymethylene (POM)
3907 1090		-Other
		-Other polyethers
3907 2010		-Polytetramethylene ether glycol
3907 2090		-Other
3907 3000		-Epoxide resins
3907 300001	A	Epoxide resins , in primary forms , containing 18% by weight of bromine, or import CIF price >3800 USD/ton (If dissolved into solutions, convert the content percentage of bromine by pure epoxy resin)
3907 3000 90	AB	Epoxide resins, in primary forms, containing < 18% by weight of bromine
3907 4000		-Polycarbonates
3907 5000	AB	-Alkyd resins
		-poly (Ethylene terephthalate)

		---In the form of slices or chips
3907 6011		-High viscosity
3907 6019		-Other
3907 6090		-Other
3907 7000f		-poly (lac tic acid)
		-Other polyesters
3907 9100		-Unsaturated
		-Other
3907 9910		-poly butylene terephthalate
3907 9910 01		not reinforced or modified PBT resins, in primary forms
3907 9910 90		Other Poly butylene terephthalate
		-Other
3907 9991	AB	-poly Terephthalic Acid hexylene glycol - butane- diol ester
3907 9999	AB	-Other
39 02		Polymers of propylene or of other olefins, in primary forms
3902 1000		-Polypropylene
3902 100010		Polypropylene resin in primary forms, electrical grade (ash content ≤ 30ppru)
3902 1000 90		Other polypropylene , in primary forms
3902 2000	B	-Polyisobutylene
		-propylene copolymers
3902 3010		-Ethylene-propylene copolymers
3902 3090		-Other
3902 9000		-Other
3902 9000 10	3	Carboxyl-terminal polybutadiene, CTPB (used as adhesive or fuel)
3902 9000 20	3	Hydroxyl-terminal polybutadiene, HTPB (used as adhesive or fuel)
3902 9000 90		Other polymers of olefins, in primary forms
29 02		Cyclic hydrocarbons
		-Cyclanes, cyclenes and cycloterpenes
2902 1100	AB	--Cyclobexane
		-Other
2902 1910		-Pinene
2902 1920		-- -4 -alkyl -1,4 -alkyl-bicyclobexane
2902 1990		-Other
2902 1990 11	s	1-methyl cyclopropene
2902 1990 12		D-limonene
2902 1990 90		Other cyclanes , cyclenes and cycloterpenes

2902 2000	AB	-Benzene
2902 3000	23	-Toluene
		-Xylenes
2902 4100		-o-Xylene
2902 4200		--m-Xylene
2902 4300		-p-Xylene
2902 4400		-Mixed Xylene isomers
2902 5000	AB	-Styrene
2902 6000	AB	-ethylbenzene
2902 7000	AB	-Cumene
		-Other
2902 9010		-Tetrahydronaphthalene (tetralin)
2902 9020	AB	-Naphthalene
2902 9030		-Dodecythenzene
2902 9040		---4 - (4'- alkyl cyclohexyl) ethylene
2902 9090		-Other
2902 9090 10		Biphenyl
2902 9090 90		other aromatic hydrocarbons
29 10		Epoxides, epoxyalcohols, epoxyphenols and epoxyethers, with a three-membered ring, and their halogenated, sulphonated, nitrated or nitrosated derivatives
2910 1000	X	-Oxirane (Ethylene oxide)
2910 2000		-Methyloxirane (propylene oxide)
2910 3000		-1 -Chloro -2 , 3 -epoxypropane (epichlorohydrin)
2910 4000	89	-Dieldrin (ISO INN)
2910 9000		-Other
2910 9000 10	89	Endrine
2910 9000 20	s	Triciclopentadiene
2910 9000 90		Three - ring epoxide, epoxy alcohol (phenols, ether) (including their halogenated, sulphonated, nitration or nitrosated derivatives)
29 07		Phenols phenol-alcohols
		-Monophenols
		-Phenol (hydroxybenzene) and its salts
2907 1110	AB	-Phenol
2907 1190		-Other
		--Cresol and its salts
		---Cresol
2907 1211		----m-Cresol
2907 1212f		-o-Cresol
2907 1219	AB	-Other
2907 1290		-Other

		-Octylphenol, Nonylphenol and their isomers salts thereof
2907 1310	X	-Nonylphenol
2907 1390		-Other
		-Naphthols and their salts
2907 1510		-2-Naphthols (p-naphthol)
2907 1590	AB	-Other
		-Other
2907 1910		-o-sec-butyl Phenol, o-isopropyl Phenol
2907 191010	AB	o - Isopropylphenol
2907 191090		Ortho seconciary phenol
2907 1990		-Other
2907 1990 11		o-Phenylphenol and its salt
2907 1990 12	s	o-Allylphenol and its salt
2907 1990 90		Other monophenols
		-Polyphenols phenol-alcohols
2907 2100		--m-Dihydroxybenzene (resorcintyb and its salts
2907 2100 01		m - Dihydroxybenzene
2907 2100 90		m - Dihydroxybenzene salts
		-p-Dihydroxyhenzene (hydroquintyne) and its salts
2907 2210		-hydroquintyne
2907 2290		-Other
2907 2300		--4 ,4 '-Isopropylidenediphenol (bisphenol A , diphenylolpropane) and its salts
2907 2300 01		Bisphenol-A (4 ,4'-Isopropylidenediphenob
2907 2300 90		Salts of bisphenol-A (salts of 4 4'-Isopropylidenediphenob
		-Other
2907 2910		-o-Dihydroxybenzene (catechol, pyrocatechol)
2907 2990		-Other
2907 2990 10	s	Hexachlorophene
2907 2990 90	AB	Other polyphenols , phenol - alcohol
27 07		Oils and other products of the distillation of high temperature coal tar similar products in which the weight of the aromatic constituents exceeds that of the Non-aromatic constituents
2707 1000	AB	-Ben20le
2707 2000		-Toluole
2707 3000		-Xylole
2707 4000		-Naphthalene
2707 5000		-Other aromatic hydrocarbon mixtures of which 65% or more by volume (including losses) distils at 250°C by the ASTM D86 method

		-Other
2707 9100		--Creosote oils
		-Other
2707 9910		-Phenols
2707 9990		-Other
27 10		Petroleum oils and oils obtained from bituminous minerals, other than crude preparations not elsewhere specified or included, containing by weight 70% or more of petroleum oils or of oils obtained from bituminous minerals, these oils being the basic constituents of the preparations waste oils
		-Petroleum oils and oils obtained from Bituminous minerals (other than crude) and preparations not elsewhere specified or included, containing by weight 70% or more of petroleum oils or of oils obtained from bituminous minerals, these oils being the basic constituents of the preparations excluding biodiesel other than waste oils
		-Light oils and Preparations
2710 1210		-Motor gasoline aviation gasoline
2710 1210 01	47ABvy	Motor gasoline , aviation gasoline , excluding biodiesel (containing lead ≤ 0 013 L/g)
2710 1210 02	47ABvy	Motor gasoline , aviation gasoline , excluding biodiesel (containing lead > 0 013 L/g)
2710 1220	47ABvy	-Naphtha
2710 1230		-Rubber solvent, paint solvent extractive solvent
		-Other
2710 1291		-Nonene
2710 1291 01	4Ay	Nonene excluding biodiesel, excluding biodiesel (Carbon 9 isomer mixtures containing > 90%)
2710 1291 90	4Ay	Other Nonene excluding biodiesel
2710 1299		-Other
2710 1299 10	4Av	Mixture of isomers of isoamylene , excluding biodiesel
2710 1299 90	4Ay	Other light oils and preparations , excluding biodiesel (containing ≥ 70% by weight of oils)
		-Other
		-Kerosene distillages
2710 1911	47ABvy	-aviation Kerosene
2710 1912	47ABvy	-Lamp-Kerosene
2710 1919		-Other

2710 1919 10	4y	Normal paraffin hydrocarbon (Cg - C13) , excluding biodiesel
2710 1919 90	4yAB	Other kerosene distillages oils and preparations, excluding biodiesel
		-Diesel oils and Other fuel oils
2710 1922	7ABv	-Fuel oils No. 5 - No. 7
2710 1923	47ABvy	-Diesel engine
2710 1923 10	47ABvy	Vehicle diesel , excluding biodiesel
2710 1923 90	47ABvy	Other diesel , excluding biodiesel
2710 1929		-Other
2710 1929 10	7ABv	Paraffin oils excluding biodiesel(which < 20% by volume distil < 350'C , which > 80% by volume distil<5500C)
2710 1929 90	7ABv	Other fuel oils , excluding biodiesel
		-Lubricating oils, lubricating greases and Other heavy oils
2710 1991	4Ayx	-lubricating grease
2710 1992	4Ayx	-Lubricating oils
2710 1993	4yx	-Basic oils for Lubricating oils
2710 1994	AB	-Liquid paraffin and heavy liquid paraffin
2710 1999	B	-Other
2710 2000	4Ay	-Petroleum oils and oils obtained from Bituminous minerals, other than crude preparations not elsewhere specified or included, containing by weight 70% or more of petroleum oils or of oils obtained from hitumintyus minerals , these oils being the basic constituents of the preparations containing biodiesel < 30% ,other than waste oils
		-Waste oils
2710 9100	9	--Containing polychlorinated biphenyls (PCBs) , polychlorinated terphenyls (PCTs) or polyhrominated hiphenyls (PBBs)
2710 9900	9	-Other
27 13		Petroleum coke, petroleum bitumen and other residues of petroleum oils or of oils obtained from bituminous minerals
		-Petroleum cOKE
		--not Calcined
2713 1110		---Containing by weight less than 3% of Sulphur
2713 1190		-Other
		--Calcined
2713 1210		---Containing by weight less than 0 8% of Sulphur

2713 1290		-Other
2713 2000		-Petroleum bitumen
2713 9000	9	-Other residues of petroleum oils or of oils obtained from bituminous minerals
44 07		Wood sawn or chipped lengthwise, sliced or peeled , whether or not planed, sanded or finger-jointed, of a thickness exceeding 6 mm
		-Coniferous
4407 4010		-Korean Pine and Mongolian scotch Pine
4407 4010 11	ABEF	Korean pine wood sawn or chipped lengthwise, sliced or peeled, end-jointed, thickness > 6mm
4407 4010 19	AB	Mongolian scotch pine wood sawn or chipped lengthwise , sliced or peeled , end-jointed , thickness > 6mm
4407 4010 91	4ABEFxy	Wood sawn or chipped lengthwise, sliced or peeled, of Korean pine , not end - jointed , thickness > 6mm
4407 4010 99	4ABxy	Wood sawn or chipped lengthwise , sliced or peeled, of Mongolian scotch pine , not end - jointed, thickness > 6mm
4407 1020		-White pine (spruce and fir)
4407 1020 11	ABEF	Wood sawn or chipped lengthwise, sliced or peeled , of endangered white pine (spruce and fir) , end -jointed , thickness > 6mm
4407 1020 19	AB	Wood sawn or chipped lengthwise, sliced or peeled, of other white pine (spruce and fir) , end - jointed, thickness > 6mm
4407 1020 91	4ABEFxy	Wood sawn or chipped lengthwise , sliced or peeled, of endangered white pine (spruce and fir) not end - jointed , thickness > 6mm
4407 1020 99	4ABxy	Wood sawn or chipped lengthwise, sliced or peeled, of other white pine (spruce and fir) , not end-jointed , thickness > 6mm
4407 1030		-Radiata Pine
4407 1030 10	AB	Wood sawn or chipped lengthwise , sliced or peeled , of radiata pine , end-jointed, thickness > 6mm
4407 1030 90	4ABxy	Wood sawn or chipped lengthwise , sliced or peeled , of radiata pine, not end-jointed, thickness > 6mm
4407 1040		-Douglas fir
4407 1040 10	AB	Wood sawn or chipped lengthwise, sliced or peeled, of douglas fir (Pseudotsuga menziesii) , end-jointed, thickness > 6mm
4407 1040 90	4ABxy	Wood sawn or chipped lengthwise, sliced or peeled,

		of douglas fir (<i>Pseudotsuga menziesii</i>) not end-jointed, thickness > 6mm
4407 1090		-Other
4407 1090 11	FEAB	other endangered coniferous wood sawn or chipped lengthwise, sliced or peeled, end-jointed, thickness >6mm
4407 1090 19	AB	Other coniferous wood sawn or chipped lengthwise, sliced or peeled, end-jointed, thickness > 6mm
4407 1090 91	EAB40	Other endangered coniferous wood sawn or chipped lengthwise sliced or peeled, not end-jointed, thickness > 6mm
4407 1090 99	AB4xy	other coniferous wood sawn or chipped lengthwise, sliced or peeled not end-jointed, thickness > 6mm -Of tropical wood specified in Subheading note 2 to this chapter
4407 2100		-Mahogany (<i>Swietenia</i> spp.)
4407 2100 10	FEAB	Wood sawn or chipped lengthwise , sliced or peeled, of mahogany (<i>swietenia</i> spp.) , end-jointed, thickness >6mm
4407 2100 90	ABEFxy	Wood sawn or chipped lengthwise , sliced or peeled, of mahogany (<i>swietenia</i> spp.) , not end-jointed, thickness > 6mm
4407 2200		--Virola , Imbuia and Balsa
4407 2200 10	AB	Wood sawn or chipped lengthwise sliced or peeled, of virola imbuia and balsa, end-jointed, thickness>6mm
4407 2200 90	4ABxy	Wood sawn or chipped lengthwise, sliced or peeled, of virola imbuia and balsa not end-jointed, thickness >6mm
4407 2500		-Dark red Meranti, Light red Meranti and Meranti Bakau
4407 2500 10	AB	Wood sawn or chipped lengthwise , sliced or peeled , of Dark Red Meranti, Light Red Meranti and Meranti Bakau end-jointed , thickness > 6mm
4407 2500 90	4xAB	Wood sawn or chipped lengthwise , sliced or peeled, of Dark Red Meranti, Light Red Meranti and Meranti Bakau not end-jointed, thickness > 6mm
4407 2600		-White Lauan White Meranti, White Seraya, Yellow Meranti and Alan
4407 2600 10	AB	Wood sawn or chipped lengthwise, sliced or peeled, of White Lauan White Meranti, White Seraya, Yellow Meranti and Alan, end-jointed, thickness >6mm
4407 2600 90	4xAB	Wood sawn or chipped lengthwise, sliced or peeled ,

		of White Lauan White Meranti, White Seraya, Yellow Meranti and Alan, not end-jointed, thickness > 6mm
4407 2700		-Sapelli
4407 2700 10	AB	Wood sawn or chipped lengthwise , sliced or peeled , of sapelli, end-jointed , thickness > 6mm
4407 2700 90	ABxy	Wood sawn or chipped lengthwise, sliced or peeled, of sapelli , not end-jointed thickness > 6mm
4407 2800		---Iroko
4407 2800 10	AB	Wood sawn or chipped lengthwise, sliced or peeled, of Iroko end - jointed , thickness > 6mm
4407 2800 90	ABxy	Wood sawn or chipped lengthwise, sliced or peeled, of Iroko not end - jointed , thickness > 6mm
		-Other
4407 2910		-Teak
4407 2910 10	AB	Wood sawn or chipped lengthwise , sliced or peeled , of teak , end-jointed, thickness > 6mm
4407 2910 90	4xAB	Wood sawn or chipped lengthwise, sliced or peeled, of teak , not end-jointed , thickness > 6mm
4407 2920		-Acajou
4407 2920 10	AB	Wood sawn or chipped lengthwise, sliced or peeled, of acajou, end-jointed, thickness > 6mm
4407 2920 90	AB	Wood sawn or chipped lengthwise, sliced or peeled, of acajou, not end-jointed, thickness > 6mm
4407 2930		-Merhan
4407 2930 10	AB	Wood sawn or chipped lengthwise , sliced or peeled , of merban, end-jointed, thickness > 6mm
4407 2930 90	AB	Wood sawn or chipped lengthwise , sliced or peeled , of merban , not end-jointed thickness > 6mm
4407 2990		-Other
4407 2990 11	FEAB	Wood sawn or chipped lengthwise , sliced or peeled , of Ramin wood , end-jointed , thickness > 6mm
4407 2990 12	FEAB	Other endangered tropical wood, not elsewhere specified or included in subheading note 2 to this Chapter, sawn or chipped lengthwise, sliced or peeled , end-jointed , thickness > 6mm
4407 2990 19	AB	Wood sawn or chipped lengthwise, sliced or peeled, of other tropical wood not elsewhere specified or included in subheading note 2 to this Chapter, end-jointed, thickness > 6mm
4407 2990 91	4xAFEB	Other tropical endangered wood, not elsewhere specified or included in subheading note 2 to this

		Chapter, sawn or chipped lengthwise, sliced or peeled, not end-jointed, thickness > 6mm
4407 2990 99	4xAB	Other tropical wood not elsewhere specified or included in subheading note 2 to this Chapter, sawn or chipped lengthwise, sliced or peeled, not end-jointed, thickness >6mm
		-Other
4407 9100		-of oak (<i>Quercus</i> spp.)
4407 9100 10	AB	Wood sawn or chipped lengthwise , sliced or peeled , of oak (<i>Quercus</i> spp.) , end-jointed, thickness > 6mm
4407 9100 90	4xAB	Wood sawn or chipped lengthwise , sliced or peeled, of oak (<i>Quercus</i> spp.) , not end-jointed, thickness >6mm
4407 9200		-Of beech (<i>Fagus</i> spp.)
4407 9200 10	ABE	Wood sawn or chipped lengthwise , sliced or peeled , of beech (<i>Fagus</i> spp.) , end-jointed, thickness >6mm
4407 9200 90	ABExy	Wood sawn or chipped lengthwise , sliced or peeled , of beech (<i>Fagus</i> spp.) , not end-jointed, thickness > 6mm
4407 9300		-of maple (<i>Acer</i> spp.)
4407 9300 10	AB	Wood sawn or chipped lengthwise , sliced or peeled, of maple , end-jointed, thickness > 6mm
4407 9300 90	ABxy	Wood sawn or chipped lengthwise, sliced or peeled, of maple , not end - jointed , thickness > 6mm
4407 9400		-of cherry (<i>Prunus</i> spp.)
4407 9400 10	AB	Wood sawn or chipped lengthwise , sliced or peeled, of cherry , end-jointed, thickness > 6mm
4407 9400 90	ABxy	Wood sawn or chipped lengthwise, sliced or peeled, of cherry , not end - jointed , thickness > 6mm
4407 9500		-of Ash(<i>Fraxinus</i> , spp.)
4407 9500 10	AB	Wood sawn or chipped lengthwise , sliced or peeled, of ash , end-jointed , thickness > 6mm
4407 9500 90	ABxy	Wood sawn or chipped lengthwise, sliced or peeled, of ash not end - jointed thickness > 6mm
		-Other
4407 9910		-of Camphor-wood, nanmu or rosewood
4407 9910 10	AFEB	Wood sawn or chipped lengthwise , sliced or peeled , of camphor-wood, nanmu or rosewood, end-jointed, thickness > 6mm
4407 9910 90	4xAFEB	Wood sawn or chipped lengthwise, sliced or peeled , of camphor-wood nanmu or rosewood not end-jointed, thickness > 6mm
4407 9920		-Of paulownia

4407 9920 10	AB	Wood sawn or chipped lengthwise, sliced or peeled, of paulownia , end-jointed , thickness > 6mm
4407 9920 90	AB	Wood sawn or chipped lengthwise , sliced or peeled , of paulownia, not end-jointed, thickness > 6mm
4407 9930		-North American hardwood (including Walnut)
4407 9930 10	AB	Wood sawn or chipped lengthwise, sliced or peeled, of North American broadleaf hardwood (including walnut) end-jointed, thickness > 6mm
4407 9930 90	AB	Wood sawn or chipped lengthwise, sliced or peeled , of North American broadleaf hardwood (including walnut) not end-jointed, thickness >6mm
4407 9980		-Other temperate, Non-Coniferous wood
4407 9980 11	FEAB	Wood sawn or chipped lengthwise , sliced or peeled , endangered Non-coniferous wood , of temperate , end-jointed , thickness > 6mm
4407 9980 19	AB	Wood sawn or chipped lengthwise, sliced or peeled, of temperate zone , Non-coniferous wood, end-jointed, thickness > 6mm
4407 9980 91	ABEF _{xy}	Wood sawn or chipped lengthwise , sliced or peeled , endangered Non-coniferous wood of temperate, not end-jointed , thickness > 6mm
4407 9980 99	4AB _{xy}	Wood sawn or chipped lengthwise , sliced or peeled , of temperate 20ne Non-coniferous wood not end-jointed, thickness > 6mm
4407 9990		-Other
4407 9990 11	AFEB	Wood sawn or chipped lengthwise, sliced or peeled, of Puncture vine wood of South America end-jointed , thickness > 6mm
4407 9990 12	AFEB	Wood sawn or chipped lengthwise, sliced or peeled, of Chinese eaglewood and similar chinese eaglewood , end-jointed , thickness > 6mm
4407 9990 15	AFEB	Wood sawn or chipped lengthwise, sliced or peeled, of other endangered wood , end - jointed, thickness > 6mm
4407 9990 19	AB	other wood sawn or chipped lengthwise, sliced or peeled , end-jointed thickness > 6mm
4407 9990 91	4xAFEB	Wood sawn or chipped lengthwise, sliced or peeled, of Puncture vine wood of South America not end - jointed , thickness > 6mm
4407 9990 92	4xAFEB	Wood sawn or chipped lengthwise, sliced or peeled, of Chinese eaglewood and similar chinese eaglewood, not end - jointed , thickness > 6mm

4407 9990 95	4xAFEB	Wood sawn or chipped lengthwise, sliced or peeled, of other endangered wood, not end - jointed, thickness > 6mm
4407 9990 99	y4xAB	Other wood sawn or chipped lengthwise, sliced or peeled , not end-jointed , thickness > 6mm
44 01		Fuel wood, in logs, in billets, in twigs, in faggots or in similar forms wood in chips or particles sawdust and wood waste and scrap, whether or not agglomerated in logs, briquettes, pellets or similar forms
4401 1000	AB	-fuel wood, in logs, in billets, in twigs, in faggots or in similar forms
		-wood in chips or particles
4401 2100		--Coniferous
4401 2100 10	ABFE	Chips or particles of endangered coniferous wood
4401 2100 90	AB	Chips or particles of other coniferous wood
4401 2200		-Non-coniferous
4401 2200 10	ABFE	Chips or particles of endangered Non-coniferous wood
4401 2200 90	AB	Chips or particles of other Non-coniferous wood
		-Sawdust and wood Waste and scrap, whether or not agglomerated in logs, briquettes, pellets or similar forms
4401 3100	ABP	-wood pellets
4401 3900	ABP	-Other
44 10		Particle board and similar board of wood or other ligneous materials (for example, oriented strand board and waferboard) where or not agglomerated with resins or other organic binging, substance
		-of wood
4410 1100	AB	-Particle hoard
4410 12Ot0	AB	-Oriented standard board (OSB)
4410 1900	AB	- Other
		-Other
		-Particle board
4410 9011	AB	-of wheat and Rice straw
4410 9019	AB	-Other
4410 9090	AB	-other
90. 13		Liquid crystal devices not constituting articles provided for more specifically in other headings lasers, other than laser diodes other optical appliances and instruments, not specified or included elsewhere in this Chapter
9013. 1000		-Telescopic sights for fitting to arms periscopes

		telescopes designed to form parts of machines, appliances, instruments or apparatus of this Chapter or Section XVI
9013. 2000		-Lasers, other than laser diodes
9013. 200001		980nm , 1480nm pump laser of SDH \geq 2. 5 GB/s , optical transmission equipment for wave-division multi-complexing
9013. 200002		Gas laser generators for laser cutting machines, cutting power 2 kW
9013. 2000 20	3	AVLIS, MLIS . CRISLA laser systems
9013. 2000 30	j	Argon ion lasers (average output power \geq 40W , working wavelength = 400nm - 515nm)
9013. 2000 40	3	Alexandrite lasers (bandwidth \leq 0.005 nm , repetition rate > 125 Hz , power > 30W)
9013. 2000 50	j	Pulsed carbon dioxide lasers (repetition rate >250Hz , power > 500W, pulses width < 200ns)
9013. 2000 60	j	Pulsed excimer lasers (Xef,Xed or KrF type, recurrent rate > 250Hz , power > 500W)
9013. 2000 70	j	Copper vapor lasers (average output power \geq 40W, working wavelength = 500nm - 600nm)
9013. 2000 80	j	Neodymium doped laser (not glass laser) (Dual-use items controlled commodity)
9013. 2000 90		Other lasers (other than laser diodes)
		-Other devices, appliances and instruments
9013. 8010		-Hand magnifying glasses
9013. 8020		---" Door eyes"
9013. 8030		-Liquid crystal display panel
9013. 8030 10		size \leq 10.1 inch liquid crystal display panel
9013. 8030 20		10.1 inch < size \leq 32 inch liquid crystal display panel
9013. 8030 90		Other liquid crystal display panel
9013. 8090		-Other
		-Parts and accessories
9013. 9010		-For goods of subheading No.. 9013. 1000 and 9013. 2000
9013. 9020		-For goods of subheading No. 9013. 8030
9013. 9090		-Other
90. 01		Optical fibres and optical fibre bundles optical fibre cables, other than those of heading NO 85. 44 sheets and plates of polarizing material lenses (including contact lenses) , prisms, mirrors and other optical elements , of any material, unmounted, other than such elements of glass not optically worked

9001. 1000		-Optical fibres, optical fibre bundles and cables
9001. 1000 01		Dispersion-unshifted single-mode fibers (G. 652 including G652A.C652B .G652C .G652D)
9001. 1000 09		Other optical fibres (other than goods of heading No. 85. 44)
9001. 1000 90		Optical fibres bundles and cables(other than goods of heading No. 85. 44)
9001. 2000		-Sheets and plates of polarizing material
9001. 2000 01		Sheets and plates of polarizing material for LCD panels
9001. 200002		Plates of polarizing material for LCD projector
9001. 200003		Plates of polarizing material for digital film projector
9001. 2000 90		Other sheets and plates of polarizing material
9001. 3000		-contact lenses
		-Spectacle lenses of glass
9001. 4010		-Photothermic
		-Other
9001. 4091		-for sunglasses
9001. 4099		-Other
		-Spectacle lenses of other materials
9001. 5010		-photothermic
		-Other
9001. 5091		-for sunglasses
9001. 5099		-Other
		-Other
9001. 9010		---Color filter
9001. 9090		-Other
9001. 909001		Optical elements of micro-optical assemblies for optical communications (thin film filters with working wave-length 800nm - 1700nm, automatic selfoc lens, faraday rotation isolator)
9001. 909002		Micro-lens (laser transceiver devices for laser video disc)
9001. 909003		Fresnel lens projection screen (screen diagonal 80 inches, projection ratio \leq 0. 26, gain ratio \geq 0.8, lens spacing \leq 100 micron)
9001. 909004		Optical components for back-light modules of LCD (including light guide baffle-board , diffusion sheet, brightening sheet)
9001. 909005		Polarizer for LCD projector
9001. 909006		Polarizing element with digital movie projector
9001. 9090 90		other optical elements, not specified or included elsewhere in the heading No.. 9001 (other than of glass

		made elements not optically processed)
90. 31		Measuring or checking instruments, appliances and machines, not specified or included elsewhere in this Chapter profile projectors
9031. 1000		-Machines for balancing mechanical parts
9031. 1000 10	3	Gyro dynamic balancing testers
9031. 1000 90		Other machines for balancing mechanical parts
9031. 2000		-Test benches
9031. 2000 10		Gyro/motor running test-benches
	j	
9031. 2000 20	3	Accelerometer test-benches
9031. 2000 30	3	Testbed (capable of testing rocket engine with a thrust > 90kN or testing three individual thrust forces at the same time)
9031. 2000 40	j	Inertial platform test-benches (including high-precision centrifuge and turntable)
9031. 2000 90		Other test benches
		-Other optical instruments and appliances
9031. 4100		-For inspecting semiconductor wafers or devices or for inspecting photomasks or reticles used in manufacturing semiconductor devices
		-Other
9031. 4910		-Profile projectors
9031. 4920		-Measuring grating device
9031. 4990		-Other
9031. 4990 10	60	Automatic inspection detectors (AID) for CD production
9031. 4990 90		Other measuring or checking optical instruments and appliances, not elsewhere specified or included in chapter 90
		-Other instruments , appliances and machines
9031. 8010		-Optical telecommunication and optical fibre performance testing instruments
9031. 8020		---Coordinate measuring machine
		-Apparatus for examinations. without damaging structure (other than apparatus for radiological examinations)
9031. 8031		-Apparatus for ultrasonic examinations
9031. 8032		-Apparatus for magnetic examinations
9031. 8033		-Apparatus for eddy examinations
9031. 8039		-Other
9031. 8090		-Other

9031. 809001		Runway friction coefficient tester
9031. 809002		Audio life detection instrument
9031. 809003		Audio and video life detection instrument
9031. 8090 10	3	Inertial measurement unit testers
9031. 8090 20		(-yro tuning testers
	j	
9031. 8090 90		Other measuring or thecking instruments, appliances and machines (not elsewhere specified or included in Chapter 90)
9031. 9000		-Parts and accessories
9031. 9000 20	j	Processing clamps for stabbing element of inettial measurement unit
9031. 9000 30	j	Inertial platform balancing clamps
9031. 9000 90		Other pans of instruments, appliances and machines of heading No.. 90. 31 , not elsewhere specified or included in chapter 90
71 03		Precious stones (other than diamonds) and semi-Precious stones, whether or not worked or graded but not strung, mounted or set ungraded precious stones (other than diamonds) and semi-precious stones, temporarily strung for covenience of transport
7103 1000		-Unworked or simply sawn or roughly shaped
		-otherwise worked
7103 9100		-Rubies , sapphires and emeralds
		-Other
7103 9910		-Jadeite
7103 9920		---Crystal
7103 9930		-Tourmaline
7103 9940		-Nephrite
7103 9990		-Other
71 17		Imitation jewellery
		-Of base metal, whether or not plated with Precious metal
7117 1100	A	--Cuff-links and studs
7117 1900	A	-Other
7117 9000	A	-Other
71 13		Articles of jewellery and parts thereof , of Precious metal or of metal chad with Precious metal
		-of Precious metal whether or not plated or clad with Precious metal
		-of silver whether or not plated or cLAD with Other

		Precious metal
7113 1110		-diamond mounted of set
7113 1190		-Other
7113 1190 10	FE	Silver jewellery and parts thereof, inlaid with articles of endangered species (whether or not plated or clad with other Precious metal)
7113 1190 90		Other silver jewellery and parts thereof(whether or not plated or clad with other Precious metal)
		-Of other Precious metal whether or not plated or clad with precious metal
		-of gold
7113 1911	J	-Diamond mounted
7113 1919		-Other
7113 1919 10	EJ	Gold jewellery and parts thereof inlaid with articles of endangered species (whether or not plated or clad with other Precious metal)
7113 1919 90	J	Other gold jewellery and parts thereof(whether or not plated or clad with other Precious metal)
		-Other
		-of Platinum
7113 1921		-Diamond mounted
7113 1929		-Other
7113 1929 10	F	Platinum jewellery and parts thereof, inlaid with articles of endangered species, whether or not plated or clad with other Precious metal
7113 1929 90		Other platinum jewellery and parts thereof, whether or not plated or clad with other Precious metal
7113 1991		-Diamond mounted or set
7113 1999		-Other
7113 1999 10	E	Jewellery and parts thereof, of Precious metal, inlaid with articles of endangered species (whether or not plated or clad with other Precious metal)
7113 1999 90		Other jewellery and parts thereof of Precious metal (whether or not plated or clad with other Precious metal)
		-Of base metal clad with Precious metal
7113 2010		-Diamond mounted or set
7113 2090		-Other
7113 2090 10	E	Jewellery and parts thereof, of base metal clad with Precious metal, inlaid with articles of endangered species
7113 2090 90		Other jewellery and parts thereof, of base metal clad

		with Precious metal
41 07		Leather further prepared after tanning or crusting, including parchment-dressed leather, of bovine (including buffalo) or equine animals, without hair on, whether or not split, other than leather of heading 41 14
		-whole hides and skins
		-Full grains, unsplit
4107 1110		-of Bovine animals
4107 1110 10	FE	Leather further prepared after tanning or crusting, including parchment-dressed leather, of endangered wild bovine animals, whole hides and skins, full grains, unsplit
4107 1110 90		Leather further prepared after tanning or crusting, including parchment-dressed leather, of bovine animals, whole hides and skins, full grains, unsplit
4107 1120		-Of equine animals
4107 1120 10	FE	Leather further prepared after tanning or crusting, including parchment-dressed leather, of endangered wild equine animals, whole hides and skins, full grains, unsplit
4107 1120 90		Leather further prepared after tanning or crusting, including parchment-dressed leather, of equine animals, whole hides and skins, full grains, unsplit
		--Grain splits
4107 1210		-of Bovine animals
4107 121010	FE	Leather further prepared after tanning or crusting, including parchment-dressed leather, of endangered wild bovine animals, whole hides and skins, grain splits
4107 121090		Leather further prepared after tanning or crusting, including parchment-dressed leather, of bovine animals, whole hides and skins, grain splits
4107 1220		-Of equine animals
4107 1220 10	FE	Leather further prepared after tanning or crusting, including parchment-dressed leather, of endangered wild equine animals, whole hides and skins, grain splits
4107 1220 90		Leather further prepared after tanning or crusting, including parchment-dressed leather, of equine animals, whole hides and skins, grain splits
		-Other
4107 1910		-for machinery belting

4107 1910 10	FE	Leather further prepared after tanning or crusting, including parchment-dressed leather, of endangered wild bovine or wild equine animals, whole hides and skins, for machinery belting
4107 1910 90		Leather further prepared after tanning or crusting, including parchment-dressed leather, of bovine or equine animals, whole hides and skins, for machinery belting
4107 1990		-Other
4107 1990 10	FE	Other leather further prepared after tanning or crusting, including parchment-dressed leather of endangered wild bovine or wild equine animals, whole hides and skins
4107 1990 90		Other leather further prepared after tanning or crusting, including parchment - dressed leather of bovine or equine animals, whole hides and skins
		-Other including sides
4107 9100		-Full grains, unsplit
4107 9100 10	FE	Leather further prepared after tanning or crusting, including parchment-dressed leather of endangered wild bovine or wild equine animals, other than whole hides and skins, full grains, unsplit
4107 9100 90		Leather further prepared after tanning or crusting, including parchment-dressed leather other than whole hides and skins, full grains, unsplit
4107 9200		--(-rain splits
4107 9200 10	FE	Leather further prepared after tanning or crusting, including parchment-dressed leather, of endangered wild bovine or wild equine animals, other than whole hides and skins, grain, splits
4107 9200 90		Leather further prepared after tanning or crusting, including parchment-dressed leather, other than whole hides and skins, grain, splits
		-Other
4107 9910		-for machinery belting
4107 9910 10	FE	Leather further prepared after tanning or crusting, including parchment-dressed leather of endangered wild bovine or wild equine animals, other than whole hides and skins, for machinery belting
4107 9910 90		Leather further prepared after tanning or crusting, including parchment-dressed leather of bovine or equine animals, other than whole hides and skins, for

		machinery belting
4107 9990		-Other
4107 9990 10	FE	Other leather further prepared after tanning or crusting, including parchment-dressed leather of endangered wild bovine or wild equine animals ,other than whole hides and skins
4107 9990 90		other leather further prepared after tanning or crusting, (including parchment-dressed leather, of bovine or equine animals, other than whole hides and skins)
41 04		Tanned or crust hides and skins of bovine (including buffalo) or equine animals, without hair on, whether or not split, but not further prepared
		~In the wet state (including wet-blue)
		-Full grains, unsplit grain splits
		-Of bovine animals
4104 IIII		-Wet-Blue
4104 IIII10	ABFE	Tanned or crust hides and skins of endangered wild bovine animals, without hair on in the wet-blue state, full grains, unsplit or grain splits
4104 111190	AB	Tanned or crust hides and skins of bovine animals, without hair on, in the wet-blue state, full grains, unsplit, grain splits
4104 1119		-Other
4104 1119 10	FE	Tanned or crust hides and skins of endangered wild bovine animals, without hair on, full grains, unsplit or grain splits, in the wet state
4104 1119 90		Tanned or crust hides and skins of bovine animals, without hair on, full grains, unsplit or grain splits, in the wet state
4104 1120		-of equine animals
4104 1120 10	FE	Tanned or crust hides and skins of endangered wild equine animals , without hair on full grains, unsplit or grain splits, in the wet state
4104 1120 90		Tanned or crust hides and skins of equine animals, without hair on, full grains, unsplit or grain splits, in the wet state
		-Other
		-of Bovine animals
4104 1911		-Wet-Blue
4104 1911 10	ABFE	Other tanned or crust hides and skins of endangered wild bovine animals, without hair on in the wet-blue

		state
4104 191190	AB	Other tanned or crust hides and skins, of bovine animals, without hair on in the wet-blue state
4104 1919		-Other
4104 1919 10	FE	Other tanned or crust hides and skins of endangered wild bovine animals, without hair on, in the wet state
4104 1919 90		Other tanned or crust hides and skins of bovine animals, without hair on in the wet state
4104 1920~		-of equine animals
4104 192010	FE	Other tanned or crust hides and skins of endangered wild equine animals, without hair on, in the wet state
4104 192090		Other tanned or crust hides and skins of equine animals, without hair on in the wet state
		— In the dry state(crust)
4104 4100		-Full grain , unsplit grain splits
4104 4100 10	FE	Tanned or crust hides and skins of endangered wild bovine or equine animals, without hair on, full grains, unsplit or grain splits, in the dry state (crust)
4104 4100 90		Tanned or crust hides and skins, without hair on, full grains, unsplit grain splits, in the dry state (crust)
		-Other
4104 4910		-for machinery belting
4104 4910 10	FE	Tanned or crust hides and skins of endangered wild bovine or equine animals, without hair on, for machinery belting
4104 4910 90		Tanned or crust hides and skins of bovine, equine animals, without hair on for machinery belting
4104 4990		-Other
4104 4990 10	FE	Other tanned or crust hides and skins of endangered wild bovine or equine animals without hair on
4104 4990 90		Other tanned or crust hides and skins of bovine, equine animals, without hair on
41 06		Tanned or crust hides and skins of other animals, without wool or hair on, whether or not split, but not further prepared
		-of Goats or kids
4106 2100		— In the wet state (including wet - blue)
4106 210001		Tanned or crust hides and skins of goats in wet -blue, without hair on, in the wet state
4106 2100 90		Other tanned or crust skins of goats or kids, in the dry state, without hair on, in the wet state
4106 2200		—In the dry state(crust)

		-of swine
		— In the wet state(including wet-blue)
4106 3110		-Wet-blue
4106 3110 10	FEAB	Tanned or crust hides and skins of pig-deer (Baby-rousa) pygmy pig (Porcuta) without hair on in the wet-blue state
4106 3110 90	AB	Other tanned or crust hides and skins of swine, without hair on in the wet-blue state
4106 3190		-Other
4106 3190 10	FE	Tanned or crust hicies and skins of pig-deer (Baby-rousa) pygmy pig (Porcula) without hair on, in the wet state
4106 3190 90		Other tanned or crust hides and skins of swine , without hair on, in the wet state
4106 3200		— In the dry state (crust)
4106 3200 10	FE	Tanned or crust hides and skins of pig-deer (Baby-rousa) pygmy pig (Porcula) without hair on in the dry state
4106 3200 90		Other tanned or crust hides and skins of swine with-out hair on, in the dry state
4106 4000	FE	-of Reptiles
		-Other
4106 9100		~In the wet state (including wet-blue)
4106 9100 10	FE	Tanned or crust hicies and skins of other endangered wild animals, without wool or hair on in the wet state
4106 9100 90		Tanned or crust hides and skins of other animals, without wool or hair on in the wet state
4106 9200		—In the dry state (crust)
4106 9200 10	FE	Tanned or crust hides and skins of other endangered wild animals, without wool or hair on, in the dry state
4106 9200 90		Tanned or crust hides and skins of other animals,