

Guide of China's Import from Vietnam 2015



ASEAN-CHINA CENTRE
中国 — 东盟 中心

Contents

I . Overview of China-ASEAN Economic and Trade Cooperation	1
II . Profile of China-Vietnam Bilateral Trade	2
III. List of China's Agricultural Imports from Vietnam.....	4
(I) Selection Method	4
(II) List of Main Agricultural Imports	4
(III) Situation of Import Tariff Quotas of China's Agricultural Products	6
1. List of agricultural products subject to the administration of import tariff quotas.....	6
2. The import tariff quotas management system of agricultural products	7
(IV) Distribution of Import Tariff Quotas of Agricultural Products in 2015.....	12
1. Distribution of import tariff quotas of grains.....	12
2. Distribution of import tariff quota of cotton	14
3. Distribution of import tariff quota of sugar	15
IV. List of China's Non-agricultural Imports from Vietnam	17
(I) Selection Method	17
(II) List of Main Non-agricultural Imports	17
V . Process Management of China's Imports from Vietnam	19
(I) Inspection & Quarantine	19
(II) Customs Clearance	20
(III) Cooperation between customs and inspection & quarantine departments.....	22
Appendix I	24
Appendix II	25
Appendix III	48

I . Overview of China-ASEAN Economic and Trade Cooperation

China-ASEAN FTA is the first FTA that China signed with other economies. And it is the biggest established FTA. ASEAN is made up by the ten member states of Indonesia, Malaysia, Philippines, Singapore, Thailand, Brunei Darussalam, Viet Nam, Lao PDR, Myanmar and Cambodia which covers 1.85 billion people and 1.4 thousand square kilometers. China and ASEAN Member signed the Framework Agreement on China-ASEAN Comprehensive Economic Cooperation at the sixth China-ASEAN Summit in November 2002. The establishment of China-ASEAN free trade area enhances the close economic and trade relations between the two parties, and also contributes to the economic development of Asia and the world at large.

According to the database of the commodity trade of the United Nations, China-ASEAN trade rose at an annual rate of about 20% from over \$50 billion to \$480 billion between 2002 and 2014. And the bilateral accumulated investment is over \$1000. China-ASEAN trade increased fast except that in 2012 since the Global Financial Crisis of 2008, and accounted for 11.16% of China's foreign trade. China-ASEAN trade had been in favor of the ASEAN side during the 2000-2011 period. But China's trade surplus appeared in 2012 and the surplus was \$44.53 billion in 2013. Increasing imports from ASEAN should receive much attention, and it will contribute to China's trade balance.

ASEAN has comparative advantages in products such as rice, fish, wood, etc. in terms of the weather and natural resources. China should import the products more from ASEAN. Since the entrance into the WTO, China's agricultural foreign trade developed fast, but China's agricultural imports increased faster than its agricultural exports and its agricultural trade deficit grew. On one hand, living standards improvement induces the rapid increase of high-quality agricultural products. On the other hand, China's agriculture faces strong competition as agricultural market is open. China-ASEAN agricultural trade developed slowly and the share of China's agricultural foreign trade decreased although ASEAN was still an important source of China's agricultural imports. Agricultural trade between China and ASEAN dropped by about 5% in 2013. The share of China-ASEAN agricultural trade in China's

agricultural foreign trade declined to 9.3% in 2013 from 10.4% in 2009. The gap between supply and demand of grain exists in China. China and ASEAN are complementary in agricultural products such as fruits, vegetables, fish and etc. These can contribute to economic and trade cooperation of the two parties. Since China-ASEAN FTA strategy was carried out, the two parties cut the import tariffs down and promoted trade facilitation such as the procedures of customs clearance, the etc. The bilateral trade liberalization has made great progress. ASEAN suppliers are lack of understanding import quota administration, inspection and quarantine, import operators, etc. in agricultural trade. This hindered the development of agricultural trade between the two parties.

China will widen the opening up to ASEAN, benefit ASEAN on a basis of equality and mutual benefit in the new era of deepening reform and expanding opening-up. Xi Jinping, China's president, pointed out, "China is pleased to improve China-ASEAN FTA, and will manage to bring the bilateral trade up to \$100 billion in 2020", and "China is pleased to reinforce sea cooperation, make good use of the China-ASEAN Investment Cooperation Fund", and jointly build the 21st Century Maritime Silk Road. In the new era, to compile *The Guide of China's Imports from ASEAN* will inject new impetus into the bilateral economic and trade development.

II . Profile of China-Vietnam Bilateral Trade

China and Vietnam are close neighbors with cultural similarity, their traditional friendship and economic & trade cooperation have been around. In recent years, China and Vietnam have been striving for the trade volume target of \$100 billion in 2017 suggested by leaders of both countries, and the bilateral trade between China and Vietnam has shown a continuous rapid growth. China has been the largest trade partner of Vietnam for consecutive 10 years, while Vietnam is the third largest partner of China in the ASEAN. Vietnam, as an important market among the ASEAM members, has become one of important overseas direct investment targets of Chinese enterprises for its lower cost, near geographical location and other advantages.

In 2014, the total volume of bilateral trade between China and Vietnam was \$85.54 billion, of which the total volume of agricultural trade between the two sides was \$5.1 billion. China's volume of imports from Vietnam and its volume of exports to Vietnam were \$19.9 billion and \$63.7 billion respectively. China had a high trade

surplus with Vietnam, which exceeded \$40 billion in 2014. In terms of trade structure, Vietnam mainly exports vegetables & fruits, cashew nuts, coffee, tea, rice, rubber, cassava & cassava products and other agricultural products and raw materials to China; while mainly imports high-value mechanical equipment, chemical fertilizers, pesticides, feedstuff & raw materials, chemical products, plastics, computers, electronic products, etc. from China.

III. List of China's Agricultural Imports from Vietnam

(I) Selection Method

The trade of agricultural products plays an important role in the China-ASEAN trade, thus ASEAN suppliers need a more particular knowledge on the application of quotas, inspection and quarantine of Chinese agricultural products. In order to prepare this guide, the main agricultural products that China imports from ASEAN shall be firstly determined. Regarding the HS 4-bit code as a basis of classifying agricultural products, in accordance with the ordering of sum of agricultural products that China imported from Vietnam in 2014, the agricultural products ranking in the top 30 are selected.

(II) List of Main Agricultural Imports

The list of main agricultural products China imported from Vietnam in 2014 is formed according to UNCOMTRADE. In order to facilitate Vietnam suppliers' export of agricultural products to China, the supervision conditions of main agricultural products imported are listed in appendixes (see details in Appendix I and II).

List of China's Main Agricultural Imports from Vietnam

Number	HS Code	Article Description
1	08 10	Other fruit , fresh
2	10 06	Rice
3	07 14	Manioc, arrowroot, salep, Jerusalem artichokes, sweet potatoes and similar roots and tubers with high starch or inulin content, fresh, chilled, frozen or dried, whether or not sliced or in the form
4	11 08	Starches inulin
5	09 01	Coffee, whether or not roasted or decaffeinated coffee husks and skins coffee substitutes containing coffee in any proportion
6	23 01	Flours , meals and pellets, of meat or meat offal, of fish or of crustaceans, molluscs or other aquatic invertebrates, unit for human consumption greaves -Flours, meals and pellets, of meat or meat offal greaves
7	08 01	Coconuts, Brazil nuts and cashew- nuts, fresh or dried, whether or not shelled or peeled
8	03 04	Fish fillets and other fish meat (whether or not minced) , fresh, chilled or frozen

9	08 07	Melons (including watermelons) and papaws (papayas) , fresh
10	03 06	Crustaceans, whether in shell or not, live, fresh ,chilled, frozen, dried, salted or in brine smoked crustaceans, whether or not cooked before or during the smoking process crustaceans, in shell, cooked by steaming or by boiling in water, whether or not chilled, frozen, dried, salted or in brine flours, meals and pellets of crustaceans, fit for human consumption
11	15 04	Fats and oils and their fractions , of fish or marine mammals , whether or not refined , but not chemically modified
12	52 02	Cotton waste (including yarn waste and garnetted stock)
13	19 05	Bread, pastry, cakes, biscuits and other bakers' wares, whether or not containing cocoa communion wafers , empty cachets of a kind suitable for pharmaceutical use, seating wafers, rice paper and similar products
14	35 05	Dextrins and other modified starches (for example, pregelatinized or esterified starches) glues based on starches, or on dextrins or other modified starches
15	20 08	Fruit, nuts and other edible parts of plants, otherwise prepared or preserved, whether or not containing added sugar or other sweetening matter or spirit, not elsewhere specified or included
16	21 06	Food preparations not elsewhere specified or included
17	23 03	Residues of starch manufacture and similar residues, beet-pulp, bagasses and other waste of sugar manufacture, brewing or distilling dregs and waste , whether or not in the form of pellets
18	21 01	Extracts, essences and concentrates, of coffee, tea or mate and preparations with a basis of these products or with a basis of coffee, tea or mate roasted chicory and other roasted coffee substitutes, and extracts, essences and concentrates thereof
19	09 04	Pepper of the genus Piper dried or crushed or ground fruits of the genus Capsicum or of the genus Pimenta
20	09 02	Tea, whether or not flavoured
21	20 09	Fruit juices (including grape must) and vegetable juices, unfermented and not containing added spirit, whether or not containing added sugar or other sweetening matter
22	08 03	Bananas, including plantains, fresh or dried
23	15 13	Coconut (copra) , palm kernel or babassu oil and fractions thereof, whether or not refined, but not chemically modified
24	13 02	Vegetable saps and extracts pectic substances, pectinates and pectates agar-agar and other mucilages and thickeners, whether or not modified, derived from vegetable products
25	03 07	molluscs, whether in shell or not, live, fresh, chilled, frozen, dried, salted or in brine smoked molluscs, whether in shell or not, whether or not cooked before or during the smoking process flours , meals and pellets of mollusks , fit for human consumption

26	12 09	Seeds, fruit and spores, of a kind used for sowing
27	19 02	Pasta, whether or not cooked or stuffed (with meat or other substances) or otherwise prepared, such as spaghetti, macaroni, Noodles, lasagne, Nocchi, ravioli, cannelloni couscous, whether or not prepared
28	19 01	Malt extract food preparations of flour, groats, meal, starch or malt extract, not containing cocoa or containing less than 40% by weight of cocoa calculated on a totally defatted basis, not elsewhere specified or included food preparations of goods of headings No. 04 01 to 04 04, not containing cocoa or containing less than 5%by weight of cocoa calculated on a totally defatted basis, not elsewhere specified or included
29	17 04	Sugar confectionery (including white chocolate) , not containing cocoa
30	03 03	Fish, frozen, excluding fish fillets and other fish meat of heading No.03 04

(III) Situation of Import Tariff Quotas of China's Agricultural Products

Our country has implemented the import tariff quotas management system to part of agricultural products. Pursuant to the quota quantities as promised in China's schedule of concession and commitments for the trade of goods after entry into the WTO, determine the annual quantities of the agricultural products subject to the administration of import tariff quotas permitted to enter the market. The import of agricultural products within the quota quantities will apply the in-quota tax rate, and the import of agricultural products outside the quota quantities will be implemented under the relevant provisions of the *Regulations of the People's Republic of China on Import and Export Duties*. Meanwhile, matters such as the authorized agency responsible for allocating import quotas of agricultural products have also been explicitly stipulated.

1. List of agricultural products subject to the administration of import tariff quotas

In accordance with the Interim Measures for the *Administration of Import Tariff Quotas of Agricultural Products* (No. 4 Decree of the Ministry of Commerce and the State Development Planning Commission [2003]), our country implements the import

tariff quotas management system to products including wheat, corn, rice, bean oil, colza oil, palm oil, sugar, cotton, wool and wool tops, etc. According to relevant commitments after China joined the WTO, the Ministry of Commerce issues the No.93 bulletin [2005] announcing that China has cancelled the import tariff quotas and import state-run trade management of bean oil, palm oil and colza oil since Jan. 1st, 2006.

At present, the categories of agricultural products subject to the administration of import tariff quotas are respectively: wheat, corn, rice, sugar, cotton, wool and wool tops.

2. The import tariff quotas management system of agricultural products

In accordance with the *Interim Measures for the Administration of Import Tariff Quotas of Agricultural Products* (No. 4 Decree of the Ministry of Commerce and the State Development Planning Commission [2003]) and the *Cancel of Import Tariff Quotas and Import state-run trade management, and Implementation of Automatic Import License of Bean Oil, Palm Oil and Colza Oil* (No.93 Decree of the Ministry of Commerce [2005]), within the year of the Gregorian calendar, the State will, pursuant to the quota quantities as promised in China's schedule of concession and commitments for the trade of goods after entry into the WTO, determine the annual quantities of the agricultural products subject to the administration of import tariff quotas permitted to enter the market.

(1) Basic requirements

Wheat, corn, rice, bean oil, colza oil, palm oil, sugar and cotton shall be subject to state-run trade quotas or non-state-run trade quotas. Those subject to state-run trade quotas shall be imported by state-run trade enterprises; those subject to non-state-run trade quotas may be imported by enterprises with the right of trade, and may also be imported directly by the final users with the right of trade.

Wool and wool tops shall be subject to the management of designated import enterprises, which shall be carried out in accordance with the *Measures for the Administration of Designated Management of Goods Import* (No. 21 Decree of the Ministry of Foreign Trade and Economic Cooperation [2001]) promulgated by the former Ministry of Foreign Trade and Economic Cooperation.

Import tariff quotas of agricultural products shall be global quotas.

The import tariff quotas of sugar, wool and wool tops shall be subject to the distribution of the Ministry of Commerce.

The import tariff quotas of wheat, corn, rice and cotton shall be subject to the distribution of the State Development and Reform Commission (SDRC) in conjunction with the Ministry of Commerce (MOFCOM).

The *Certificates of Import Tariff Quotas of Agricultural Products* are applicable to the imports in the trade forms of general trade, processing trade, barter trade, small-scale border trade, assistance, donation and other forms.

The products entering the bonded warehouses, bonded zones and export processing zones are exempted for the *Certificates of Import Tariff Quotas of Agricultural Products*.

(2) Application of quotas

The period for applying for the import tariff quotas of agricultural goods shall be between Oct. 15th and Oct. 30th of each year (with the exception of the distribution form of drawing the quotas by coming order on the basis of contract). The MOFCOM and the SDRC will promulgate the next year's total quantity of import tariff quotas of each agricultural goods and the specific conditions for the application therefore as well as the tariff serial numbers and applicable tax rates determined by the Customs Tariff Committee of the State Council on the *International Business Daily*, the *China Economic Herald*, the MOFCOM website (<http://www.mofcom.gov.cn>) and the SDRC website (<http://www.sdpc.gov.cn>) one month before the application period. Sugar, wool and wool tops shall be subject to the promulgation of MOFCOM; and wheat, corn, rice and cotton shall be subject to the promulgation of SDRC.

The agencies authorized by MOFCOM shall, in light of the specific conditions promulgated, accept the applications on sugar, wool, wool tops and the relevant documents submitted, and transfer the qualified applications to the MOFCOM before Nov. 30th (with the exception of the distribution form of drawing the quotas by coming order on the basis of contract), with the copies thereof sent simultaneously to the SDRC.

The agencies authorized by SDRC shall, in light of the specific conditions promulgated, accept the applications on wheat, corn, rice, cotton and the relevant documents submitted, and transfer the qualified applications to the SDRC before Nov. 30th, with the copies thereof sent simultaneously to the MOFCOM.

(3) Distribution of quotas

Import tariff quotas shall be distributed on the basis of the quantity applied for by the applicants, their previous import performance, production capacity and other

relevant commercial standards or on the basis of the form of drawing by coming order. The minimum quantity of distribution shall be determined on the basis of the commercially feasible shipping quantity of each category of agricultural products.

The MOFCOM and the SDRC will, before Jan. 1st of each year, issue to the final users the *Certificates of Import Tariff Quotas of Agricultural Products* via their respectively authorized agencies, to which the “Special Seal of the MOFCOM for Certificate of Import Tariff Quotas of Agricultural Products” and the “Special Seal of the SDRC for Certificate of Import Tariff Quotas of Agricultural Products” shall be affixed.

The quotas for state-run trade shall be indicated on the *Certificate of Import Tariff Quotas of Agricultural Products*.

(4) Valid term of quotas

The annual import tariff quotas of agricultural goods shall be implemented since Jan. 1st of each year, and shall be valid within the year of the Gregorian calendar. The *Certificates of Import Tariff Quotas for Agricultural Products* shall be valid from Jan. 1st to Dec. 31st of its current year. The valid term of the *Certificates of Import Tariff Quotas for Agricultural Products* subject to the distribution form of drawing by coming order on the basis of contract shall be carried out in accordance with the detailed implementation rules promulgated.

For the agricultural products subject to import tariff quotas that are shipped out from the departing port before Dec. 31st of the year and shall arrive at the destination next year, the final user shall, by presenting the *Certificate of Import Tariff Quotas of Agricultural Products* and the relevant certifications, apply for term extension to the original agency that has issued the certificate. The said agency may extend the term after having examined the case, but the term may not be extended to a time later than the end of February of the next year.

(5) Implementation of quotas

The final users shall, pursuant to the relevant provisions of the State on import of the commodities concerned, sign the import contracts by themselves or entrust others to sign the contracts.

For the import of agricultural products for processing trade that is subject to the administration of tariff quotas, the customs shall handle the record-keeping procedures for the processing trade contracts by the *Certificate of Approval for Processing Trade* submitted by the enterprises, and handle the customs clearance procedures by the

Certificate of Import Tariff Quotas of Agricultural Products submitted where “processing trade” has been indicated under the column of “trade modes”.

Where an enterprise of processing trade fails to re-export the processed products within the prescribed term, it shall go through the writing-off procedures for processing trade contracts within 30 days after the expiration of term. The customs will implement the procedures thereabout according to the relevant provisions on processing trade.

The *Certificate of Import Tariff Quotas of Agricultural Products* will apply the system of one certificate for several batches, that is, a final user in need of importing the products in several batches may go through the customs clearance procedures for several times by the *Certificate of Import Tariff Quotas of Agricultural Products*. A final user shall faithfully fill out the “Column for Final User’s Import” under the *Certificate of Import Tariff Quotas of Agricultural Products* and take the Certificate to the original Certificate issuing agency in exchange for the certificate for the part of quotas that have not gone through the customs clearance procedures.

The excess part of bulk cargos in a batch imported shall be no more than 5% of the batch.

The agricultural products entering the bonded warehouses, bonded zones, export processing zones from outside China and to which import tariff quotas are applied shall be subject to the examination before release and to the supervision and control conducted by the customs in accordance with the relevant provisions. For the agricultural products exiting or imported from outside the bonded warehouses, bonded zones, export processing zones and to which import tariff quotas are applied, the customs will handle the import procedures by the *Certificate of Import Tariff Quotas of Agricultural Goods* in accordance with the relevant provisions on the administration of import of goods.

A final user shall, within 20 office days after finishing the customs clearance procedures for the final batch of products whose quotas are indicated in the *Certificate of Import Tariff Quotas of Agricultural Products*, hand in the original of the first pages (customs procedure pages for the consignee) of the said Certificate signed and sealed by the customs to the original Certificate issuing agency.

A final user shall, before the end of January of the next year, return the original of the unused first pages (customs procedure pages for the consignee) of the Certificate of the current year to the original Certificate issuing agency.

(6) Adjustment of quotas

Where no contract is concluded before Aug. 15th of the current year for the state-run trade quotas of agricultural products distributed to a final user, the final user may entrust a trade enterprise of any kind with the right of trade to import the products upon the approval of the MOFCOM or the SDRC in accordance with the division of administration as provided in Article 7 of the present Measures. A final user with the right of trade may also import the products directly.

Where a final user holding the Certificate of Import Tariff Quotas of Agricultural Products fails to conclude an import contract for all the quotas already drawn in the current year or fail to fulfill the contract already concluded, it shall return the unfinished quotas to the original Certificate issuing organ before Sep. 15th.

The term for applying for the tariff quotas to be redistributed for the import of agricultural products shall be from Sep. 1st to Sep. 15th of each year (with the exception of the distribution form of drawing by coming order on the basis of contracts). The MOFCOM and the SDRC will respectively promulgate the specific conditions for applying for the tariff quotas to be redistributed on the *International Business Daily*, the *China Economic Herald*, the MOFCOM website (<http://www.mofcom.gov.cn>) and the SDRC website (<http://www.sdpc.gov.cn>) one month before the application period. The applications shall be submitted to the MOFCOM or the SDRC via their respectively authorized agencies.

Sugar, wool and wool tops shall be subject to the promulgation of MOFCOM, and wheat, corn, rice and cotton shall be subject to the promulgation of SDRC.

A final user that has finished the import tariff quotas distributed of agricultural products before the end of October and has returned the originals of the first pages (customs procedure pages for the consignee) of the *Certificate of Import Tariff Quotas of Agricultural Products* may apply for the tariff quotas to be redistributed.

Before September, 30 of each year, the MOFCOM shall distribute the tariff quotas to be redistributed of bean oil, colza oil, palm oil, sugar, wool and wool tops to the final users (with the exception of the distribution form of drawing by coming order on the basis of contracts), and the SDRC shall distribute the tariff quotas to be redistributed of wheat corn, rice and cotton to the final users.

The tariff quotas to be redistributed shall, in light of the applying conditions promulgated, be distributed according to the form of drawing by coming order. The minimum quantity of distribution shall be determined on the basis of the commercially

feasible shipping quantity of each category of agricultural products.

A final user who has obtained the redistributed quotas may entrust a trade enterprise of any kind with the right of trade to import the products. A final user with the right of trade may also import the products directly.

(IV) Distribution of Import Tariff Quotas of Agricultural Products in 2015

1. Distribution of import tariff quotas of grains

The promulgation of quota quantities, application conditions and distribution principles of import tariff quotas of grains in 2015 is subject to the No.22 bulletin of 2014 issued by the SDRC of PRC. On Jan. 5th, 2015, the SDRC promulgated the information of enterprises applying for import tariff quotas of grains in 2015.

(1) Quota quantities

The import tariff quota quantities of grains in 2015 are: 9.636 million tons of wheat, accounting for 10% of non-state-run trade; 7.2 million tons of corn, accounting for 40% of non-state-run trade; 5.32 million tons of rice (including: 2.66 million tons of long-grain rice, and 2.66 million tons of medium and short-grain rice), accounting for 50% of non-state-run trade.

(2) Application conditions

The basic conditions of applicants for import tariff quotas of grains in 2015 are: have registered in the Administration for Industry and Commerce prior to Oct. 1st, 2014; be with good financial condition, tax records and integrity status; strictly implement the statistical system of grain circulation, and be subject to the provisions of minimum and maximum stock quantities for grain operators; during the period of 2012-2014, be with no violation records in the aspects such as customs, industry & commerce, tax affairs, foreign exchange, inspection & quarantine, grain circulation and environmental protection, no credit record of non-performing loan, and no actions violating the *Interim Measures for the Administration of Import Tariff Quotas of Agricultural Products*.

On the premise of such conditions above, applicants for import tariff quota of wheat must also meet one of the following conditions:

State-run trade enterprises;

Enterprises with actual import performance (excluding agent import) in 2014;

Flour manufacturing enterprises with wheat consumption more than 100,000 tons in 2013 or 2014;

Food manufacturing enterprises with flour consumption more than 50,000 tons in 2013 or 2014;

Enterprises engaged in the processing trade and using wheat or flour as the raw material, without actual import performance in 2014 but with the import-export operation right and the certificate of production capacity on processing trade provided by local commerce authorities.

Applicants for import tariff quota of corn and wheat must also meet one of the following conditions:

State-run trade enterprises;

Enterprises with actual import performance (excluding agent import) in 2014;

Feed manufacturing enterprises with corn consumption more than 50,000 tons in 2013 or 2014;

Other manufacturing enterprises with corn consumption more than 150,000 tons in 2013 or 2014;

Enterprises engaged in the processing trade and using corn as the raw material, without actual import performance in 2014 but with the import-export operation right and the certificate of production capacity on processing trade provided by local commerce authorities.

Applicants for import tariff quota of rice (the long-grain rice and the medium and short-grain rice need respective application) must also meet one of the following conditions:

State-run trade enterprises;

Enterprises with actual import performance (excluding agent import) in 2014;

Grain enterprises with the qualification of grain wholesale and retail, reaching the amount of rice sales more than RMB 100 million in 2013 or 2014;

Food manufacturing enterprises with rice consumption more than 50,000 tons in 2013 or 2014;

Enterprises engaged in the processing trade and using rice as the raw material, without actual import performance in 2014 but with the import-export operation right and the certificate of production capacity on processing trade provided by local commerce authorities.

The group enterprises with multiple processing plants must separately apply for and use the import quotas in the name of each independent processing plant. The trading enterprises applying for the import tariff quota of rice can choose to submit the application in the name of group headquarters or subordinate enterprises, but the group headquarters and subordinate enterprises shall not submit the application in the meantime.

(3) Quota usage

The above import tariff quotas of grains must be used by applicants themselves, and the imported goods shall be processed and operated by the enterprises, among which the imported wheat and corn shall be processed for use by the plants; and the imported rice shall be organized for sales in the name of the enterprises.

2. Distribution of import tariff quota of cotton

The promulgation of quantity, application conditions and distribution principles of import tariff quota of cotton in 2015 is subject to the No.22 bulletin of 2014 issued by the SDRC of PRC.

(1) Quota quantities

The import tariff quota quantity of cotton in 2015 is 894,000 tons, among which the state-run trade accounts for 33%.

(2) Application conditions

The basic conditions of applicants for import tariff quota of cotton in 2015 are: have registered in the Administration for Industry and Commerce prior to Oct. 1st, 2014; be with good financial condition, tax records and integrity status; during the period of 2012-2014, be with no violation records in the aspects such as customs, industry & commerce, tax affairs, foreign exchange, inspection & quarantine and environmental protection, and with no credit record of non-performing loan; have performed social responsibilities related to business; Without actions violating the *Interim Measures for the Administration of Import Tariff Quotas of Agricultural Products*.

On the premise of such conditions above, applicants for import tariff quota of cotton must also meet one of the following conditions:

State-run trade enterprises;

Enterprises with actual import performance (excluding agent import) in 2014;

Cotton-spinning enterprises with spinning equipment more than 50,000 spindles.

3. Distribution of import tariff quota of sugar

The preparation of the quantity and application conditions of import tariff quota of sugar in 2015 is subject to the *Detailed Rules and Regulations on Application and Distribution of Import Tariff Quota of Sugar in 2015* (No.66 Decree of the MOFCOM [2014]).

(1) Total quantity of tariff quota

The total quantity of import tariff quota of sugar in 2015 is 1.945 million tons, among which the state-run trade accounts for 70%.

(2) Types of applicant enterprises

State-run trade enterprises;

Central enterprises with the function of state reserve;

Enterprises with actual import performance holding the tariff quota of sugar in 2014 (hereinafter referred to as applicants with actual performance);

Sugar enterprises with daily processing capacity more than (equal to) 600 tons, registered capital more than (equal to) RMB 10 million, and annual sales of sugar more than (equal to) RMB 450 million;

Enterprises engaged in the processing trade, using sugar as the raw material.

(3) Basic conditions of applicants

Have registered in the Administration for Industry and Commerce prior to Oct. 1st, 2014, and conducted the publicity of annual reports;

During the period of 2012-2014, be with no violation records in the aspects of customs, foreign exchange, industry & commerce, tax affairs, quality inspection, social security, environmental protection, self-discipline, etc.;

Without actions violating the *Interim Measures for the Administration of Import Tariff Quotas of Agricultural Products* and the *Detailed Rules and Regulations on Application and Distribution of Import Tariff Quota of Sugar in 2014*.

(4) Application materials

Application report for import tariff quotas of agricultural products;

Application form for import tariff quotas of agricultural products;

Copy of business license for enterprise as a legal person (duplicate);

Copies of the 2014 *Certificates of Import Tariff Quotas of Agricultural Products* of sugar and the customs declaration for importation endorsed and signed by customs;

The tax clearance certificate of 2013 proofing the enterprise has paid tax by law.

The applicants with actual performance shall provide the first four items of materials above; the applicants without actual performance shall provide the first, second, third and fifth items of materials. If an applicant without actual performance was constructed and put into operation after 2009, it shall also provide the competent department with an approval document of feasibility study report of the construction project (or an approval document of project proposals) and the completion acceptance report.

(5) Distribution of quota

If the total quantity of import tariff quota can satisfy applications of qualified applicants, the distribution of quota shall be accordant with the application quantities of applicants;

If the total quantity of import tariff quota cannot satisfy applications of qualified applicants, applicants with actual performance can get the preferential quota, and the distribution of quota shall be accordant with actual import performance, production capacity and sales of applicants in the last year, as well as other relevant commercial standards.

IV. List of China's Non-agricultural Imports from Vietnam

(I) Selection Method

The non-agricultural products, such as industrial products, account for the major share of China-ASEAN trade. With the further promotion of China-ASEAN free trade area, the tariff level of products like industrial products has been significantly reduced, with relatively high degree of trade & investment liberalization and facilitation. In accordance with the ordering of sum of non-agricultural products that China imported from Vietnam in 2014, regarding the HS 2-bit code as a basis of classification, the non-agricultural products ranking at the top are selected in the first 10 Chapters; then regarding the HS 4-bit code as a basis of classification, the non-agricultural products ranking in the top 3 of the first 10 Chapters above are selected respectively.

(II) List of Main Non-agricultural Imports

The list of main non-agricultural products China imported from Vietnam in 2014 is formed according to UNCOMTRADE after the top 30 kinds of products are selected on the classification bases of HS 2-bit and HS 4-bit codes. In order to facilitate Vietnam suppliers' export of relevant products to China, the supervision conditions of main non-agricultural products imported are listed in appendixes (see details in Appendix I and III).

List of China's Main Non-agricultural Imports from Vietnam

Number	HS Code	Article Description
1	85. 42	Electronics integrated circuits
2	85. 25	Transmission apparatus for radio-broadcasting or television, whether or not incorporating reception apparatus or sound recording or reproducing apparatus television cameras digital cameras and video camera recorders
3	85. 17	Telephone sets, including telephones for cellular networks or for other wireless networks other apparatus for the transmission or reception of voice, images or other data. including apparatus for communication in a wired or wireless network(such as a local or wide are network) .other than transmission or reception apparatus of heading 84. 43, 85. 25 .85. 27 or 85. 28

4	27 09	Petroleum oils and oils obtained from bituminous minerals, crude
5	27 01	Coal briquettes, ovoids and similar solid fuels manufactured from coal
6	27 10	Petroleum oils and oils obtained from bituminous minerals, other than crude preparations not elsewhere specified or included, containing by weight 70% or more of petroleum oils or of oils obtained from bituminous minerals, these oils being the basic constituents of the preparations waste oils
7	52 05	Cotton yarn (other than sewing thread) , containing 85% or more by weight of cotton, not put up for retail sale
8	52 06	Cotton yarn (other than sewing thread) , containing less than 85% by weight of cotton, not put up for retail sale
9	84. 43	Printing machinery used for printing, cylinders and other printing components of heading 84.42 other printers Copying machines and facsimile machines , whether or not combined Part and accessories thereof
10	84. 71	Automatic data processing machines and units thereof magnetic or optical readers, machines for transcribing data onto data media in coded form and machines for processing such data, not elsewhere specified or included
11	84. 73	Parts and accessories (other than covers, carrying cases and the like) suitable for use solely or principally with machines of headings No.. 84. 69 to 84. 72
12	44 01	Fuel wood, in logs, in billets, in twigs, in faggots or in similar forms wood in chips or particles sawdust and wood waste and scrap, whether or not agglomerated in logs, briquettes, pellets or similar forms
13	44 03	Wood in the rough, whether or not stripped of bark or sapwood, or roughly squared
14	44 07	Wood sawn or chipped lengthwise, sliced or peeled , whether or not planed, sanded or finger-jointed, of a thickness exceeding 6 mm
15	64 03	Footwear with outer soles of rubber, plastics, leather or composition leather and uppers of leather
16	64 04	Footwear with outer soles of rubber, plastics, leather or composition leather and uppers of textile materials
17	40 01	Natural rubber, balata, gutta-percha, guayule, chicle and similar natural gums, in primary forms or in plates, sheets or strip
18	40 05	Compounded rubber, unvulkanized, in primary forms or in plates, sheets or strip
19	40 02	Synthetic rubber and factice derived from oils, in primary forms or in plates, sheets or strip mixtures of any products of heading No. 40 01 with any product of this heading, in primary forms or in

		plates, sheets or strip
--	--	-------------------------

V . Process Management of China’s Imports from Vietnam

According to relevant laws and regulations of the State Administration for Quality Supervision and Inspection and Quarantine (AQSIQ) and the General Administration of Customs, the products that China imports from Vietnam shall be subject to inspection and quarantine, and these imported goods can enter into the domestic market only after passing the supervision of customs.

(I) Inspection & Quarantine

During the entry inspection declaration, the inspection form for entry goods shall be filled in, and relevant documents such as the contracts, invoices and bills of lading shall be provided according to the *Provisions of Entry-Exit Inspection and Quarantine Declaration*. In addition, relevant documents shall be provided according to requirements in case of the following conditions.

1. Relevant certificates shall be provided for goods subject to safety quality licensing and sanitary registration, or required to be approved and reviewed.
2. For goods requiring quality inspection, foreign quality certificates or quality guarantees, product use instructions as well as relevant standards and technical data shall be provided; for goods delivered with samples, the reference samples must be attached; for goods settled accounts per grade or conditioned weight, an application of weight survey shall be submitted in the meantime.
3. During the entry inspection declaration for waste, the *Approval Certificate for Imported Waste* signed and issued by national environmental protection departments, the certificate for pre-shipment inspection signed and issued by authorized inspection agencies, etc. shall be provided.
4. For goods applying for damage survey, relevant documents which can prove the situation of damage, such as the damage report of tallying, business records of railways, air traffic accident reports or marine accident reports, shall also be provided.
5. For goods applying for weight (quantity) survey, the detailed list of weight, the

list of tallying, etc. shall be also provided.

6. For goods through acceptance of receiving and using departments or tested by other units, the acceptance report or test results, the detailed list of weight, etc. shall be attached with the goods.

7. International travelers entering in the country shall fill in the quarantine declaration form on entry.

8. For animals and plants as well as corresponding products entering in the country, the trade contracts, invoices and certificates of origins shall be provided, and meanwhile, the official quarantine certificate of exporting countries or regions also must be provided; For those required to transact the approval procedures of entry quarantine, the entry quarantine permits for animals and plants shall also be provided.

9. During the inspection declaration of transited animals and plants as well as corresponding products, waybills and quarantine certificates officially provided by the exporting countries or regions shall be held; when transiting animals, transit permits for animals and plants signed and issued by the State Administration of Inspection and Quarantine shall also be submitted.

10. During the entry inspection declaration for transportation and containers, quarantine certificates shall be provided, and health conditions of relevant personnel shall be declared.

11. Entry passengers and traffic personnel carrying companion animals shall provide the quarantine certificate for entry animals and the vaccination certificate.

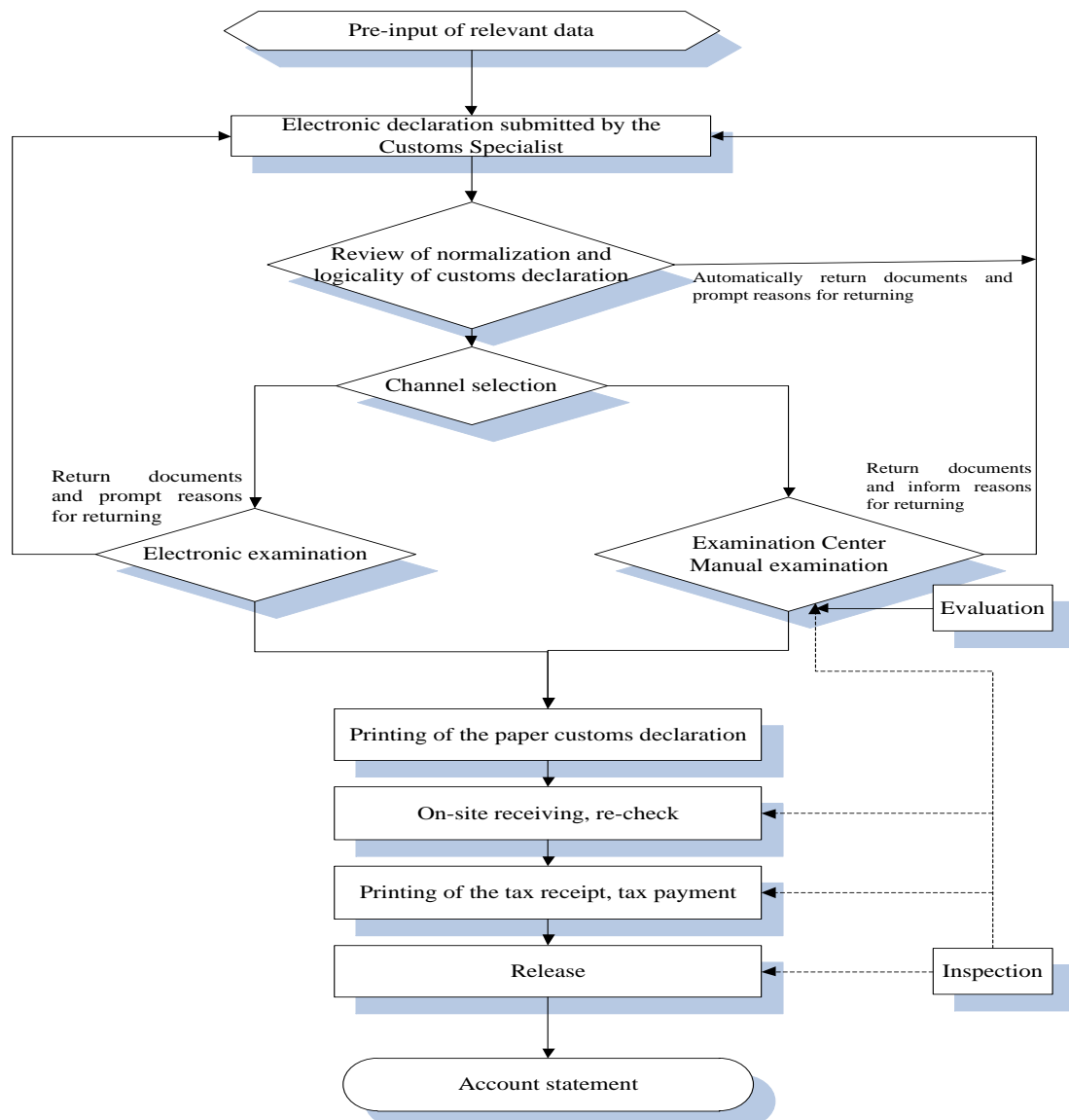
12. For articles banned from entry but need entry due to special requirements such as scientific research, the certificate of special permission signed and issued by the State Administration of Inspection and Quarantine must be provided.

13. For the entry of special articles, relevant approval documents or specified documents shall be provided.

(II) Customs Clearance

The procedure of customs clearance for China's imported products is composed of five basic links, including declaration, inspection, taxation, release and clearance. Declaration refers to the behaviors that a consignee or his agent of imported goods submits the verification certificate to customs and applies for the transaction of customs affairs. Inspection refers to the checks conducted by customs according to laws to the

imported goods declared by the declarant, so as to confirm the conformity of documents, certificates and goods, check if there is any violation of laws and if the entry is legal, and prepare conditions for the next customs clearance procedure. Taxation means that customs charge the tariff for imported goods and the taxes for imported links according to relevant national policies, laws and regulations, including tariff classification, application of the tariff rate and import linkage tax rate, approval and determination of the duty-paying value, calculation and payment of taxes. Release is the last link of on-site operations of port customs supervision. Clearance means that customs implement inspections on the goods requiring follow-up management after the port release within a specified period, and deal with the goods requiring supplementary certificates and payment for overdue taxes till all of customs supervision procedures are fully completed. The flow chart of China's product import is as follow:



For the customs clearance of agricultural products subject to import quotas management, the *Certificates of Import Tariff Quotas of Agricultural Products* shall be submitted according to relevant provisions of the *Interim Measures for the Administration of Import Tariff Quotas of Agricultural Products* (No. 4 Decree of the Ministry of Commerce and the State Development Planning Commission [2003]).

(III) Cooperation between customs and inspection & quarantine departments

According to the *Notification on the Comprehensive Promotion of Cooperation between Customs and Inspection & Quarantine Departments Issued by the General Administration of Customs and the State Administration for Quality Supervision and Inspection and Quarantine* (No.161 Decree of the General Administration of Customs and AQSIQ [2014]), since Aug. 1st, 2014, the “3 Ones” of cooperation between customs and inspection & quarantine departments has been comprehensively promoted to all directly competent customs and inspection & quarantine departments, all sites of customs clearance, and all goods and articles requiring customs declaration and inspection declaration pursuant to the laws, so as to achieve the maximum utilization of facilitation measures provided by customs and inspection & quarantine departments to benefit enterprises.

The “3 Ones” of cooperation between customs and inspection & quarantine departments refers to the “one-off declaration, one-off inspection and one-off release”. The “one-off declaration” refers to “one-off input and respective declarations”, which means that an enterprise only needs to input data for once, and the data will be respectively sent to customs and inspection & quarantine departments; the “one-off inspection” refers to “one-off unpacking that customs and inspection & quarantine departments jointly implement check/inspection & quarantine pursuant to the laws”, which means that both parties of customs and inspection & quarantine departments can jointly implement check/inspection & quarantine to the same batch of goods as required according to their different responsibilities and pursuant to the laws; the “one-off release” refers to “networking check and release of customs and inspection & quarantine departments”, which means that customs and inspection & quarantine

departments respectively send the check and release information for goods arriving at ports, and the enterprise can transact procedures for taking delivery of goods by the check and release information of customs and inspection & quarantine departments.

Appendix I

List of Supervision Requirements of Customs

License or Official Document Codes	License or Official Document Names
1	Import Licence of the People's Republic of China
2	Import License for Dual-use Items and Technologies
3	Export License for Dual-use Items and Technologies
4	Export Licence of the People's Republic of China
5	Temporary Textiles Export Licence of the People's Republic of China
6	Prohibited Import of Used Mechanical and Electric Products
7	Automatic Import License of the People's Republic of China
8	Export Forbidden Items
9	Import Forbidden Items
A	Certificate of Inspection for Goods Inward
B	Certificate of Inspection for Goods Outward
D	Certificate of Inspection for Goods Inward(Used for Rough Diamonds)
E	Export Permit for Endangered Wild Animals
F	Import Permit for Endangered Wild Animals
G	Export License for Dual-use Items and Technologies(Directionality)
I	Psychotropic Drug Import and Export License
J	The export license or the people's Bank of China import approval of gold products
O	Automatic Import License (Used and New Mechanical and Electrical Products)
P	Certificate of Approval for Import of Wastes
Q	Drug Import Customs Clearance
S	Certificate for the Import and Export of Pesticides
T	License of Transporting Cash in Foreign Currency Inward and Outward
W	Import Authorization for Narcotic Drugs
X	Clearance Notification for Environmental Management on Import/Export of Toxic Chemicals
Z	Certificate of of Approval for the Import of Audio and Video Products or Claimed Programs
e	Certificate of Cotton Import Tariff Quota at Out-Quota Preferential Duty Rate
s	Certificate of the Use Identification of Goods under ITA Tax
t	Import Tariff Quota Certificate
v	Automatic Import License of the People's Republic of China (Processing Trade)
x	Export Licence of the People's Republic of China (Processing Trade)
y	Export Licence of the People's Republic of China (Small Amount of Border Trade)

Appendix II

Supervision Requirements of Customs of Main Agricultural Imports

HS Code	Supervision Requirements	Article Description
08 10		Other fruit , fresh
0810 1000	AB	-Strawberries
0810 2000	AB	-Raspberries, blackberries, mulberries and loganberries
0810 3000	AB	-Blackwhite or red currant and goosecherries
0810 4000	AB	-Cranberries, bilberries and Other Fruits of the genus Vaccinium
0810 5000	AB	- Kiwifruit
0810 6000	AB	-Durian
0810 7000	AB	-Persimmons
		-Other
0810 9010	AB	-Lychee
0810 9030	AB	-Longan
0810 9040	AB	-Rambutan
0810 9050	AB	-sugar apple
0810 9060	AB	---Carambola
0810 9070	AB	-Wax apple
0810 9080	AB	-Dragon fruit
0810 9090		-Other
0810 9090 01	AB	Chinese ciate , fresh
0810 9090 02	AB	Loquat , fresh
0810 9090 10	ABE	Fruit of elaeagnus mollis diels
0810 9090 90	AB	Other fruit, fresh
10 06		Rice
		-Rice in husk (Paddy or rough)
		-Seed
1006 1011		-Long grain
1006 1011 01	4xAByt	Rice in husk (paddy or rough), shien rice (long-grained Nonglutinous rice), seed (in-quota)
1006 1011 90	4xABv	Rice in husk (paddy or rough) , shien rice (long-grained Nonglutinous rice) , seed (out-quota)
1006 1019		-Other
1006 1019 01	4xAByt	Other rice in husk (paddy or rough) , seed (in-quota)
1006 1019 90	4xABy	Other rice in husk (paddy or rough) , seed (out-quota)
		-Other
1006 1091		-Long grain

1006 1091 01	4xAByt	Other rice in husk (paddy or rough), long grain (long-grained Nonglutinous rice) (in-quota)
1006 1091 90	4xABy	Other rice in husk (paddy or rough), long grain (long-grained Nonglutinous rice) (out-quota)
1006 1099		-Other
1006 1099 01	4xAByt	Other rice in husk (paddy or rough) (in-quota)
1006 1099 90	4xABy	Other rice in husk (paddy or rough) (out-quota)
		-Husked (brown) Rice
1006 2010		-Shien Rice
1006 2010 01	4xAByt	Husked (brown) rice, long grain(long-grained Nonglutinous rice) (in-quota)
1006 2010 90	4xABy	Husked (brown) rice, long grain (long-grained Nonglutinous rice) (out-quota)
1006 2090		-Other
1006 2090 01	4xAByt	Other husked(brown) rice (in-quota)
1006 2090 90	4xABy	Other husked (brown) rice (out-quota)
		-Semi-milled or wholly milled Rice, whether or not polished or glazed
1006 3010		---Long grain
1006 3010 01	4xAByt	Semi-milled or wholly milled rice, long grain (long-grained Nonglutinous rice) whether or not polished or glazed (in-quota)
1006 3010 90	4xABy	Semi-milled or wholly milled rice, long grain (long-grained Nonglutinous rice) [whether or not polished or glazed (out-quota)]
1006 3090		-Other
1006 3090 01	4xAByt	Other semi-milled or wholly milled rice [whether or not polished or glazed (in-quota)]
1006 3090 90	4xABy	Other semi-milled or wholly milled rice [whether or not polished or glazed (out-quota)]
		-Broken ERIC
1006 4010		---Long grain
1006 4010 01	4xAByt	Broken rice, long grain (long-grained Nonglutinous rice) (in-quota)
1006 4010 90	4xABy	Broken rice, long grain (long-grained Nonglutinous rice) (out-quota)
1006 4090		-Other
1006 4090 01	4xAByt	Other broken rice (in-quota)
1006 4090 90	4xABy	Other broken rice (out-quota)
07 14		Manioc, arrowroot, salep, Jerusalem artichokes, sweet potatoes and similar roots and tubers with high starch or inulin content, fresh, chilled, frozen or dried, whether or not sliced or in the form

		-Manioc (cassava)
0714 1010	AB	-Fresh
0714 1020	AB	-dried
0714 1030	AB	---Chilled or frozen
		-Sweet potatoes
		-Fresh
0714 2011	AB	-for cultivation
0714 2019	AB	-Other
0714 2020	AB	-dried
0714 2030	AB	---Chilled or frozen
0714 3000	AB	-Yams(dioscoreae spp.)
0714 4000		-Taros(colocasia spp.)
0714 4000 01	AB	Fresh, chilled taros (colocasia spp.) (whether or not sliced or made granute taros are also called yunai belong to Spath hyttum of the Araceae vegetables, classified into ground taros and river taros)
0714 4000 90	AB	Frozen, dried taros (colocasia spp.) (whether or not sliced or made granute taros are also called yunai belong to Spath hyttum of the Araceae vegetables, classified into ground taros and river taros)
0714 5000	AB	-Yautia (Xanthosoma spp.)
		-Other
0714 9010	AB	-water chestnut
		---Lotus (Nelumbo nucifera) rootstock
0714 9021	AB	-for culcivation
0714 9029	AB	-Other
0714 9090		-Other
0714 9090 10	ABFE	Tubers of orchicl family, fresh, chilled, frozen or dried
0714 9090 91	ABFE	Other endangered similar roots and tubers with high starch or inutin content (including sago pith, whether or not sliced or made gramule, fresh , chilled, frozen ,dried)
0714 9090 99	AB	Other similar roots and tubers with high starch or inutin content(including sago pith whether or not sliced or in the form of pellets fresh , chilled , frozen , dried)
11 08		Starches inutin
		-Starches
1108 1100	AB	-wheat starch
1108 1200	AB	-Maize (corn) starch
1108 1300	AB	-Potato starch
1108 1400	AB	-Manioc (cassava) starch
1108 1900	AB	-Other Starches
1108 2000	AB	-Inutin

09 01		Coffee, whether or not roasted or decaffeinated coffee husks and skins coffee substitutes containing coffee in any proportion
		-Coffee , not roasted
0901 1100	AB	--not decaffeinated
0901 1200	AB	-Decaffeinated
		-Coffee , roasted
0901 2100	AB	-not decaffeinated
0901 2200	AB	-Decaffeinated
		-Other
0901 9010	AB	---Coffee husks and skins
0901 9020	AB	---Coffee substitutes containing coffee
23 01		Flours , meals and pellets, of meat or meat offal, of fish or of crustaceans, molluscs or other aquatic invertebrates, unit for human consumption greaves -Flours, meals and pellets, of meat or meat offal greaves -Flours and meals, of meat bones
2301 1011	AB	-Of bovine and sheep
2301 1019	AB	-Other
2301 1020	AB	---reaves
2301 1090	AB	-Other
		-Flours meals and pellets , of fish or of crustaceans , molluscs or other aquatic invertebrates
2301 2010	AB	-Flours and meals of fish, of a kind used in animal feeding
2301 2090	AB	-Other
08 01		Coconuts, Brazil nuts and cashew- nuts, fresh or dried, whether or not shelled or peeled
		-Coconuts
0801 1100	AB	-Desiccated
0801 1200	AB	-in the inner shell(endocarp)
		-Other
0801 1910	AB	-Seedlings
0801 1990	AB	-Other
		-Brazil nuts
0801 2100	AB	--in shell
0801 2200	AB	-Shelled
		-Cashew nuts
0801 3100	AB	--in shell
0801 3200	AB	-Shelled
03 04		Fish fillets and other fish meat (whether or not minced) , fresh, chilled or frozen

0304 3100	AB	-Tilapia(<i>Oreochromis</i> spp.)
0304 3200	AB	--Catfish(<i>pangasius</i> spp. <i>silurus</i> spp. <i>clarias</i> spp. <i>ictalurus</i> spp.)
0304 3300	AB	--Nile perch(<i>lates niloticus</i>)
0304 3900		-Other
0304 3900 10	ABE	Fresh or chilled fillets of marbled eels
0304 3900 20	ABEF	Fresh or chilled fillets of european eels
0304 3900 90	AB	Fresh or chilled fillets of carp (<i>Cyprinus carpio</i> , <i>Carassius carassius</i> , <i>Ctenopharyngodon idellus</i> , <i>Hypophthalmichthys</i> spp. , <i>Cirrhinus</i> spp. , <i>Mylopharyngodon piceus</i>) , other eels (<i>Anguilla</i> spp.) and snakeheads (<i>Channa</i> spp.)
		-Other fish fillets fresh and chilled
0304 4100	AB	-Pacific salmon (<i>Oncorhynchus nerka</i> , <i>Oncorhynchus gorbuscha</i> , <i>Oncorhynchus keta</i> , <i>Oncorhynchus tshawytscha</i> , <i>Oncorhynchus kisutch</i> , <i>Oncorhynchus masou</i> and <i>Oncorhynchus thodurus</i>) ,Atlantic salmon (<i>Salmo salar</i>) and Danube salmon(<i>Hucho hucho</i>)
0304 4200	AB	-Trout (<i>Salmo trutta</i> , <i>Oncorhynchus mykiss</i> , <i>Oncorhynchus clarki</i> <i>Oncorhynchus aguabonita</i> , <i>Oncorhynchus gilae</i> , <i>Oncorhynchus apache</i> and <i>Oncorhynchus chrysogaster</i>)
0304 4300	AB	-Flat fish (<i>Pleuronectidae</i> , <i>Bothidae</i> , <i>Cynoglossidae</i> , <i>Soleidae</i> , <i>Scophthalmidae</i> and <i>Citharidae</i>)
0304 4400	AB	-fish of the families <i>Bregmacrotidae</i> , <i>Euclichthyidae</i> <i>Gadidae</i> , <i>Macrouridae</i> , <i>Melanonidae</i> <i>Merlucciidae</i> , <i>Moridae</i> and <i>Muraenolepididae</i>
0304 4500	ABU	-Swordfish (<i>Xiphias gladius</i>)
0304 4600	ABU	-Toothfish (<i>Dissostichus</i> spp.)
0304 4900		-Other
0304 4900 10	BFE	Fresh or chilled fillets of Other endangered fish
0304 4900 90	AB	Fresh or chilled fillets of fish
		-Other fresh and chilled
0304 5100		-Tilapia (<i>Oreochromis</i> spp.) , catfish (<i>Pangasius</i> spp. , <i>Silurus</i> spp. , <i>Clarias</i> spp. , <i>Ictalurus</i> spp.) , carp (<i>Cyprinus carpio</i> , <i>Carassius carassius</i> , <i>Ctenopharyngodon idellus</i> , <i>Hypophthalmichthys</i> spp. , <i>Cirrhinus</i> spp. , <i>Mylopharyngodon piceus</i>) , eels (<i>Anguilla</i> spp.) , Nile perch (<i>Lates niloticus</i>) and snakeheads
0304 5100 10	ABE	Marbled eels, fresh or chilled (whether or not minced)
0304 5100 20	BEF	Meat of european eels, fresh or chilled (whether or not minced)

0304 5100 90	AB	Tilapia(oreothromis spp.) , catfish (Pangasius spp. ,Silurus spp. , Clarias spp. , Ictalurus spp.) , carp (Cyprinus carpio , Carassius carassius , Ctenopharyngodon idellus, Hypophthalmichthys spp. , Cirrhinus spp. , Mylopharyngodon piceus) , eels (Aguilla spp.) ,nile perch(Lates niloticus) and snakeheads (Channa spp.) , fresh or chilled (whether or not minced)
0304 5200	AB	-Salmonoids
0304 5300	AB	-Fish of the families bregmacerotidae euclichthyidae
		gadidae macrouridae melanonidae merluccidae moridae and Muraenolepididae
0304 5400	ABU	-Swordfish (Xiphias gladius)
0304 5500	ABU	-Toothfish (Dissostichus spp.)
0304 5900		-Other
0304 5900 10	BEF	Other endangered fish meat fresh or chilled (whether or not minced)
0304 5900 90	AB	Other fish meat, fresh or chilled (whether or not minced)
0304 6100	AB	-Tilapia (Oreothromis spp.)
0304 6211	AB	----Channel catfish(ictalum punctatus)
0304 6219	AB	-Other
0304 6290	AB	-Other
0304 6300	AB	--Nile perch(Lates niloticus)
0304 6900		-Other
0304 6900 10	ABE	Frozen fillets of marbled eels
0304 6900 20	BEF	Frozen fillets of european eels
0304 6900 90	AB	Frozen fillets of carp (Cyprinus carpio , Carassius carassius , Ctenopharyngodon idellus, Hypophthalmichthys spp. , Cirrhinus spp. , Mylopharyngodon piceus) , eels (Aguilla spp.) , nile perch (Lates niloticus) and snakeheads (Channa spp.)
0304 7100	AB	--Cod (Cadus morhua , (-acius ogac , Gadus macrocephalus)
0304 7200	AB	-Haddock (Melanogrammus aeglefinus)
0304 7300	AB	--Coalfish(Pollachius virens)
0304 7400	AB	-Hake(Merluccius spp. urophycis spp.)
0304 7500	AB	-Alaska Pollack (Theragra chalcogramma)
0304 7900	AB	-Other
		-Other fish fillets frozen
0304 8100	AB	-Pacific salmon, Atlantic salmon
0304 8200	AB	-Trout

0304 8300	AB	-Flat fish
0304 8400	ABU	-Swordfish (<i>Xiphias gladius</i>)
0304 8500	ABU	-Toothfish (<i>Dissostichus</i> spp.)
0304 8600	AB	-Herring (<i>Clupea harengus</i> , <i>Clupea pallasii</i>)
0304 8700	AB	-tunas(of the genus <i>Thunnus</i>) , Skipjack or stripehel-ried bonito (<i>Euthynnus</i> [<i>Katsuwonus</i>) <i>pelamis</i>]
0304 8900		-Other
0304 8900 10	BEF	Other endangered fish fillets
0304 8900 90	AB	Other fish fillets
		-Other, Frozen
0304 9100	ABU	-Swordfish (<i>Xiphias gladius</i>)
0304 9200	ABU	-Toothfish (<i>Dissostichus</i> spp.)
0304 9300		-Tilapias (<i>Oreochromis</i> spp.) , catfish (<i>Pangasius</i> spp. , <i>Silurus</i> spp. , <i>Clarias</i> spp. , <i>Ictalurus</i> spp.) , carp (<i>Cyprinus carpio</i> , <i>Carassius carassius</i> , <i>Ctenopharyngodon idellus</i> , <i>Hypophthalmichthys</i> spp. , <i>Cirrhinus</i> spp. , <i>Mylopharyngodon piceus</i>) eels (<i>Anguilla</i> spp.) , Nile perch (<i>Lates niloticus</i>) and snakeheads (<i>Channa</i> spp.)
0304 9300 10	ABE	Frozen meat of marbled eels (whether or not ruined)
0304 9300 20	ABEF	Frozen meat of european eels (whether or not minced)
0304 9300 90	AB	Frozen meat tilapia (<i>Oreochromis</i> spp.) , catfish (<i>Pangasius</i> spp. , <i>Silurus</i> spp. , <i>Clarias</i> spp. , <i>Ictalurus</i> spp.) , carp (<i>Cyprinus carpio</i> , <i>Carassius carassius</i> , <i>Ctenopharyngodon idellus</i> , <i>Hypophthalmichthys</i> spp. , <i>Cirrhinus</i> spp. , <i>Mylopharyngodon piceus</i>) , eels (<i>Anguilla</i> spp.) , Nile perch (<i>Lates niloticus</i>) and snakeheads(<i>Channa</i> spp.) , (whether or not minced)
0304 9400	AB	-Alaska Pollack (<i>Theragra chalcogramma</i>)
0304 9500	AB	-Fish of the families <i>Bregmaceridae</i> , <i>Euclichthys</i> -
		<i>dae</i> <i>Gadidae</i> <i>Macrouridae</i> , <i>Melanonidae</i> , <i>Merlucciidae</i> <i>Moridae</i> and <i>Muraenolepididae</i> , other than Alaska Pollack (<i>Theragra chalcogramma</i>)
0304 9900		-Other
0304 9900 10	ABFE	other meat of endangered fish (whether or not minced) frozen
0304 9900 90	AB	Other fish meat(whether or not minced) frozen
08 07		Melons (including watermelons) and papaws (papayas) , fresh
		-Melons (including watermelons)

0807 1100	AB	-watermelons
		-Other
0807 1910	AB	-Hami Melons
0807 1920	AB	---Cantatoupe and Calia Melons
0807 1990	AB	-Other
0807 2000	AB	-Papaws (papayas)
03 06		Crustaceans , whether in shell or not, live, fresh, chilled, frozen, dried, salted or in brine smoked crustaceans, whether or not cooked before or during the smoking process crustaceans, in shell, cooked by steaming or by boiling in water, whether or not chilled, frozen, dried, salted or in brine flours, meals and pellets of crustaceans, fit for human consumption
0306 1100	AB	- Reef shrimp and shrimp (Palinums lobster genus Rock lobster genus)
0306 1200	AB	-Ao lobster(Ao lobster genus)
		--crabs
0306 1410	AB	-Swimming crab
0306 1490	AB	-Other
0306 1500	AB	-Norway Lobsters (Nehrops Norvegicus)
		--Cold-water shrimp and prawns (pandalus, spp., Crangon crangon)
		---Cold-water shrimp
0306 1611	AB	-Shelled
0306 1612	AB	-Other , pandaius horealis
0306 1619	AB	-Other
		---Cold-water prawns
0306 1621	AB	-Shelled
0306 1629	AB	-Other
		-Other shrimps and prawns
		-shrimps
0306 1711	AB	-Shelled
0306 1719	AB	-Other
		-prawns
0306 1721	AB	-Shelled
0306 1729	AB	-Other
		-Other including flours, meals and pellets of crustaceans, fit for human consumption
		-Freshwater crawfish
0306 1911	AB	-Shelled
0306 1919	AB	-Other
0306 1990	AB	-Other

		-not Frozen
		-Reef shrimp and shrimp (Palinurus, Lobster genus, Rock lobster genus)
0306 2110	AB	-for cultivation
0306 2190	AB	-Other
		-Ao lobster(Ao lobster genus)
0306 2210	AB	-for cultivation
0306 2290	AB	-Other
		--Crabs
0306 2410	AB	-for cultivation
		-Other
0306 2491	AB	-Freshwater crabs live
0306 2492	AB	-Swimming crab
0306 2499	AB	-Other
		-Norway Lobsters (Nephrops Norvegicus)
0306 2510	AB	-for cultivation
0306 2590	AB	-Other
		--Cold-water shrimp and prawns (pandalus spp., Crangon crangon)
0306 2610	AB	-for cultivation
0306 2620	AB	-prawns , Fresh or chilled
0306 2690		-Other
0306 2690 01	AB	Cold-water shrimp, fresh or chilled
0306 2690 90	AB	Cold-water prawns and shrimp, whether in shell or not live dried salted or in brine (including smoked, whether in shell or not, whether or not cooked before or during the smoking process in shell, cooked by steaming or by boiling in water)
		-Other shrimps and prawns
0306 2710	AB	-for cultivation
0306 2720	AB	-prawns , Fresh or chilled
0306 2790		-Other
0306 2790 01	AB	Other shrimp , fresh or chilled
0306 2790 90	AB	Other prawns and shrimp, whether in shell or not ,live, dried, salted or in brine(including smoked, whether or not cooked before or during the smoking process in shell, cooked by steaming or by boiling in water)
		-Other including flours, meals and pellets of crustaceans, fit for human consumption
0306 2910	AB	-for cultivation
0306 2990	AB	-Other

15 04		Fats and oils and their fractions , of fish or marine mammals, whether or not refined, but not chemically modified
1504 1000	AB	-Fish-liver oils and their fractions
1504 2000	AB	-Fats and oils and their fractions, of fish other than liver oils
1504 3000		-Fats and oils and their fractions, of marine mammals
1504 3000 10	ABFE	Fats and oils and their fractions, of endangered marine mammals
1504 3000 90	AB	Other fats and oils and their fractions of marine mammals
52 02		Cotton waste (including yarn waste and garnet-
		ted stock)
5202 1000	AP	-Yarn Waste (including thread Waste)
		-Other
5202 9100	ABP	--Gametted stock
5202 9900	ABP	-Other
19 05		Bread, pastry, cakes, biscuits and other bakers' wares, whether or not containing cocoa communion wafers , empty cachets of a kind suitable for pharmaceutical use, seating wafers, rice paper and similar products
1905 1000	AB	-Crispbread
1905 2000	AB	-Gingerbread and the like
		-Sweet biscuits waffles and wafers
1905 3100	AB	-Sweet biscuits
1905 3200	AB	-Waffles and wafers
1905 4000	AB	-Rusks, toasted bread and similar toasted products
1905 9000	AB	-Other
35 05		Dextrins and other modified starches (for example, pregelatinized or esterified starches); glues based on starches, or on dextrins or other modified starches
3505 1000 暫	A	-Dextrins and Other modified Starches
3505 2000	A	-Glues
20 08		Fruit , nuts and other edible parts of plants, otherwise prepared or preserved, whether or not containing added sugar or other sweetening matter or spirit ,not elsewhere specified or included
		-nuts, groundnuts and Other Seeds, whether or not mixed together
		--Ground-nuts
2008 1110	AB	---Ground-nuts kernels , in airtight containers
2008 1120	AB	-Roasted ground-nuts

2008 1130	AB	---Ground-nut butter
2008 1190	AB	-Other
		-Other , including Mixtures
2008 1910	AB	-Walnut meats, in airtight containers
2008 1920	AB	-Other nuts, in airtight containers
		-Other
2008 1991	AB	---chestnut Seed
2008 1992	AB	-Sesame
2008 1999		-Other
2008 1999 10	ABE	Korean pine-nuts, shelled, (not prepared or preserved by vinegar or acetic acid)
2008 1999 90	AB	Nuts and other seeds, (not prepared or preserved by vinegar or acetic acid) not elsewhere specified or included
		-Pineapples
2008 2010	AB	---in airtight containers
2008 2090	AB	-Other
		-Citrus fruit
2008 3010	AB	---in airtight containers
2008 3090	AB	-Other
		-Pears
2008 4010	AB	---in airtight containers
2008 4090	AB	-Other
2008 5000	AB	-Apricots
		-Cherries
2008 6010	AB	---in airtight containers
2008 6090	AB	-Other
		-Peaches
2008 7010	AB	---in airtight containers
2008 7090	AB	-Other
2008 8000	AB	-Strawberries
		-Other including mixtures Other than those of subheading No. 2008 19
2008 9100	AB	-Palm hearts
2008 9300	AB	--Cranberry (Vaccinium macrocarpon vaccinium oxycoccos, vaccinium vitis-idaea.)
2008 9700	AB	-Mixtures
		-Other
2008 9910	AB	-Lychee can
2008 9920	AB	---Longan can
		-Preparations of Seaweeds and Other alga

2008 9931	AB	-Seasoned Laver
2008 9932	AB	-salted , sea tangle
2008 9933	AB	-Pinnatifida salted
2008 9939	AB	-Other
2008 9940	AB	-Water chestnut in airtight containers
2008 9990	AB	-Other
21 06		Food preparations not elsewhere specified or included
2106 1000	AB	-Protein concentrates and textured Protein substances
		-Other
2106 9010	AB	-Beverage bases
2106 9020	AB	---Compound alcoholic preparations of a kind used for the manufacture of beverages
2106 9030		-royal jelly, put up as tonic essences
2106 9030 10	ABFE	Royal jelly, put up as tonic essences containing composition of endangered plants
2106 9030 90	AB	Other royal jelly, put up as tonic essences
2106 9040	AB	---Coconut juice
2106 9050		-Seal oil capsules
2106 9050 10	ABEF	Endangered seal oil capsules
2106 9050 90	AB	Other seal oil capsules
2106 9090		-Other
2106 909001	AB	Milk protein partial hydrolysate formula, milk protein hydrolysis amino acid formula special depth formula, infant milk powder
2106 9090 暂 10	ABEF	Other food preparations containing composition of endangered plants, not elsewhere specified or included
2106 9090 90	AB	Other food preparations, not elsewhere specified or included
23 03		Residues of starch manufacture and similar residues, beet-pulp, bagasses and other waste of sugar manufacture, brewing or distilling dregs and waste , whether or not in the form of pellets
2303 1000	AB	-Residues of starch manufacture and similar Residues
2303 2000	AB	-Beet-pulp ,bagasses and Other Waste of sugar manufacture
2303 3000	AB	-Brewing or distilling dregs and Waste
2303 3000 10	AB	Distiller's grains with or without Solubles
2303 3000 90	AB	Other brewing or distilling dregs and waste included

21 01		Extracts, essences and concentrates, of coffee, tea or mate and preparations with a basis of these products or with a basis of coffee, tea or mate roasted chicory and other roasted coffee substitutes, and extracts, essences and concentrates thereof -Extracts, essences and concentrates of coffee, and preparations with a basis of these extracts, essences or concentrates or with a basis of coffee
2101 1100	AB	-Extracts, essences and concentrates
2101 1200	AB	-Preparations with a basis of extracts, essences or concentrates or with a basis of coffee
2101 2000	AB	-Extracts, essences and concentrates, of tea or mate, and preparations with a basis of these extracts, essences or concentrates or with a basis of tea or mate
2101 3000	AB	-Roasted Chicory and Other roasted Coffee substitutes, and extracts, essences and concentrates thereof
09 04		Pepper of the genus Piper dried or crushed or ground fruits of the genus Capsicum or of the genus Pimenta
		-Pepper
0904 1100		-Neither crushed Nor ground
0904 1100 10	QAB	Piper longum
0904 1100 90	AB	Pepper of the genus Piper, neither crushed Nor ground(other than piper longum)
0904 1200	AB	--crushed or ground
		- Chili
0904 2100	AB	-Dried neither crushed Nor ground
0904 2200	AB	--crushed or ground
09 02		Tea, whether or not flavoured -Green tea (not fermented) in immediate packings of a content not exceeding 3kg
0902 1010	AB	-Flavoured
0902 1090	AB	-Other
		-Other green tea (not fermented)
0902 2010	AB	-Flavoured
0902 2090	AB	-Other
		-Black tea (fermented) and partly fermented tea, in immediate packings of a content not exceeding 3 kg
0902 3010	AB	-Oolong tea
0902 3020	AB	-Pu-er tea
0902 3090	AB	-Other
		-Other black tea (fermented) and other partly fermented tea

0902 4010	AB	-Oolong tea
0902 4020	AB	-Pu-er tea
0902 4090	AB	-Other
20 09		Fruit juices (including grape must) and vegetable juices, unfermented and not containing added spirit, whether or not containing added sugar or other sweetening matter
		-Orange juice
2009 1100	AB	-Frozen
2009 1200	AB	-not frozen of a Brix value not exceeding 20
2009 1900	AB	-Other
		-Grapefruit (including pomelo) juice
2009 2100	AB	-Of a Brix value not exceeding 20
2009 2900	AB	-Other
		-Juice of any other single citrus fruit
		-Of a Brix value not exceeding 20
2009 3110	AB	-Lemon juice
2009 3190	AB	-Other
		-Other
2009 3910	AB	-Lemon juice
2009 3990	AB	-Other
		-Pineapple juice
2009 4100	AB	-Of a Brix value not exceeding 20
2009 4900	AB	-Other
2009 5000	AB	-Tomato juice
		-Grape juice (including Grape must)
2009 6100	AB	-Of a Brix value not exceeding 30
2009 6900	AB	-Other
		-apple juice
2009 7100	AB	-Of a Brix value not exceeding 20
2009 7900	AB	-Other
		-juice of any Other single fruit or Vegetable
2009 8100	AB	--Cranberry juice
		-Other
		-fruit juice
2009 8912	AB	-Mango juice
2009 8913	AB	-Passion-fruit juice
2009 8914	AB	----Guva juice
2009 8915	AB	-pear juice
2009 8919	AB	-Other
2009 8920	AB	---Vegetable juice
		-Mixtures of juices
2009 9010	AB	-Of fruit juices

2009 9090	AB	-Other
08 03		Bananas, including plantains , fresh or dried
0803 1000	AB	-Plantains
0803 9000	AB	-Other
15 13		Coconut (copra) , palm kernel or babassu oil and fractions thereof, whether or not refined, but not chemically modified
		-Coconut (copra) oil and its fractions
1513 1100	AB	--Crude oil
1513 1900	AB	-Other
		-Palm kernel or babassu oil and fractions thereof-
1513 2100	AB	--Crude oil
1513 2900	AB	-Other
13 02		Vegetable saps and extracts; pectic substances, pectinates and pectates; agar-agar and other mucilages and thickeners, whether or not modified, derived from vegetable products
		-Vegetable saps and extracts
1302 1100	WB9	-Opium
1302 1200 ^暂	4xABy	-of Liquorice
1302 1300	AB	-of hops
		-Other
1302 1910	AB	---Crude lacquer
1302 1920	ABS	-Azadirachtin
1302 1930	ABS	-of pyrethrum or of the roots of plants containing rotenone
1302 1940	ABE	----Gingko
1302 1990		-Other
1302 1990 ^暂 01	ABS	Matrine
1302 1990 11	23AB	Chinese ephedra extract powder used primarily in pesticide
1302 1990 12	23AB	Chinese ephedra extract used primarily in pesticide
1302 1990 13	ABFE	Endangered vegetable saps and extracts for used primarily in pesticide
1302 1990 19	AB	Other vegetable saps and extracts used primarily in pharmacy
1302 1990 91	Q23AB	Chinese ephedra extract powder used primarily in pharmacy
1302 1990 92	Q23AB	Chinese ephedra extract used in pharmacy
1302 1990 93	23AB	Other chinese ephedra extract powder
1302 1990 94	23AB	Other chinese ephedra extract
1302 1990 95	ABFE	Saps and extracts of taxusl
1302 1990 96	ABFE	Saps and extracts of herba dendroii

1302 1990 97	ABFE	Saps and extracts of other endangered vegetable
1302 1990 99	AB	Other vegetable saps and extracts
1302 2000	AB	-Pectic substances, pectinates and pectates
		-Mucilages and thickeners, whether or not modified, derived from vegetable products
1302 3100	AB	-Agar-Agar
1302 3200	AB	-Mucilages and thickeners, whether or not modified, derived from locust beans , locust bean seeds or guar seeds
		-Other
		-Preparations of seaweeds and other algae
1302 3911	AB	---Carrageenan
1302 3912	AB	-Algin
1302 3919	AB	-Other
1302 3990		-Other
1302 3990 10	ABFE	Mucilages and thickeners, derived from endangered vegetable products, not elsewhere specified or included
1302 3990 90	AB	Other mucilages and thickeners derived from vegetable products, not elsewhere specified or included
03 07		molluscs, whether in shell or not, live, fresh, chilled, frozen, dried, salted or in brine; smoked molluscs, whether in shell or not, whether or not cooked before or during the smoking process; flours , meals and pellets of mollusks , fit for human consumption
		-Oysters
		-Live, fresh or chilled
0307 1110	AB	-for cultivation
0307 1190	AB	-Other
0307 1900	AB	-Other
		-Scallops, including queen scallops, of the genera Pecten, Chlamys or Placopecten
		-Live, fresh or chilled
0307 2110		-for cultivation
0307 2110 10	ABE	Pearloyster (Pinctada maxima) , for cultivation
0307 2110 90	AB	Other scallops(including queen scallops) for cultivation)
0307 2190		-Other
0307 2190 10	ABE	Other pearloyster (Pinctada maxima) , live, fresh or chilled
0307 2190 90	AB	Other scallops (including queen scallops, excluding for cultivation) live , fresh or chilled
0307 2900		-Other

0307 2900 10	ABE	Other pearloyster (<i>pinctada maxima</i>), frozen , dried , salted or in brine (including smoked , in whether in shell or not whether or not cooked before or during the smoking process)
0307 2900 90	AB	Other scallops (including queen scallops) , frozen, dried, salted or in brine (including smoked , in whether in shell or not, whether or not cooked before or during the smoking process)
		Mussels (<i>Mytilus</i> spp. , <i>Perna</i> spp.)
		-Live, Fresh or chilled
0307 3110	AB	-for cultivation
0307 3190		-Other
0307 3190 01	AB	Mussels , fresh or chilled
0307 3190 90	AB	Other mussels live
0307 3900		-Other
0307 3900 01	AB	Mussels , frozen
0307 3900 90	AB	Other mussels, dried, salted or in brine (including smoked , in whether in shell or not whether or not cooked before or during the smoking process)
		-Cuttle fish (<i>Sepia officinalis</i> , <i>Rossia macrosoma</i> <i>Sepiola</i> spp.) and squid (<i>Ommastrephes</i> spp. , <i>Loligo</i> spp. , <i>nototodarus</i> spp. , <i>Sepioteuthis</i> spp.)
		-Live, fresh or chilled
0307 4110	AB	-for cultivation
0307 4190	AB	-Other
0307 4900	AB	-Other
		-Octopus (<i>Octopus</i> spp.)
0307 5100	AB	-Live, fresh or chilled
0307 5900	AB	-Other
		-Snails, Other than sea Snails
0307 6010		-for cultivation
0307 6010 10	ABFE	Endangered snails other than sea snails, for cultivation
0307 6010 90	AB	Other snails other than sea snails, for cultivation
0307 6090		-Other
0307 6090 10	ABFE	Other endangered snails , other than sea snails
0307 6090 90	AB	Other snails other than sea snails , live , fresh , chilled, frozen dried salted or in brine (including smoked, in whether in shell or not, whether or not cooked before or during the smoking process)
		-Clam, cockle and ark shell (families <i>arcidae</i> , <i>arctidae</i> , <i>cardiidae</i> , <i>donacidae</i> , <i>hiatellidae</i> , <i>mactridae</i> , <i>mesoclesmaticae</i> , <i>myidae</i> , <i>semelidae</i> ,

		solecurtidae, solenidae, tridacnidae, veneridae)
		-Live fresh or chilled
0307 7110		-for cultivation
0307 7110 10	ABEF	Tridacna stone, live fresh or chilled , for cultivation
0307 7110 90	AB	Clam,cockle and ark shell (arcidae, arcticidae, cardiidae, donacidae, hiatellidae, mactridae, mesodesmatidae, myidae, mesociesmatidae, solecurtidae ,solenidae, tridacnidae, veneridae) live, fresh or chilled , for cultivation
		-Other
0307 7191	AB	---Clam
0307 7199		-Other
0307 7199 10	ABEF	Tridacna stone, live, fresh or chilled
0307 7199 90	AB	Clam, cockle and ark shell (arcidae, arcticidae ,cardiidae, donacidae, hiatellidae, mactridae, mesodesmatidae, myidae, mesodesmatidae, solecurtidae, solenidae, tridacnidae ,veneridae) , live , fresh or chilled
		-Other
0307 7910	AB	---Ceam
0307 7990	AB	-Other
0307 7990 10	ABEF	Tridacna stone , frozen, dried, salted (including smoked , in whether in shell or not whether or not cooked before or during the smoking process)
0307 7990 90	AB	Clam, cockle and ark shell (arcidae, arcticidae, cardiidea, donacidae, hiatellidae, mactridae, mesoclesmaticlae, myidae, mesodesmatidae, solecurtidae, solenidae, tridacnidae, veneridae) , frozen, dried, salted (including smoked , in whether in shell or not, whether or not cooked before or during the smoking process)
		-Abalone (ormer)
		-Live, fresh or chilled
0307 8110	AB	-for cultivation
0307 8190	AB	-Other
0307 8900	AB	-Other
		-other, including flours, meals and pellets, fit for human consumption
		-Live fresh or chilled
0307 9110		-for cultivation
0307 9110 10	AFEB	Endangered molluscs, live, fresh, chilled, for cultivation

0307 9110 90	AB	Other molluscs, live, fresh, chilled for cultivation
0307 9190		-Other
0307 9190 10	ABEF	Other endangered molluscs , live fresh chilled
0307 9190 90	AB	Other molluscs, live, fresh, chilled
0307 9900		-Other
0307 9900 10	ABEF	Other endangered molluscs, frozen, dried, salted or in brine including flours , meals and pellets of mollusks, fit for human consumption, excluding crustaceans, (including smoked , whether in shell or not whether or not cooked before or during the smoking process)
0307 9900 90	AB	Other molluscs , frozen , dried , salted or in brine , including flours, meals and pellets of mollusks, fit for human consumption, excluding crustaceans, (including smoked, whether in shell or not whether or not cooked before or during the smoking process)
12 09		Seeds, fruit and spores, of a kind used for sowing
1209 1000	AB	-sugar beet Seed
		-Seeds of forage plants
1209 2100	AB	-Lucerne (alfalfa) seed
1209 2200	AB	--Clover (Trifolium spp.) seed
1209 2300	AB	-Fescue Seed
1209 2400	AB	-Kentucky blue grass (Poa-pratensis L) seed
1209 2500	AB	-Rye grass (Lolium multiflorum Lam , Lolium perenne L) seed
		-Other
1209 2910	AB	-Beet Seed, excluding sugar Beet Seed
1209 2990	AB	-Other
1209 3000		-Seeds of herbaceous plants cultivated principally for their flowers
1209 3000 10	ABFE	Seeds of endangered herbaceous plants cultivated principally for their flowers
1209 3000 90	AB	Other seeds of herbaceous plants cultivated principally for their flowers
		-other
1209 9100	AB	--Vegetable Seeds
1209 9900		-Other
1209 9900 10	AFEB	Other endangered seeds, fruit and spores, of a kind used for sowing
1209 9900 90	AB	Other seeds, fruit and spores, of a kind used for sowing

19 02		Pasta, whether or not cooked or stuffed (with meat or other substances) or otherwise prepared, such as spaghetti, macaroni, Noodles, lasagne, gnocchi, ravioli, cannelloni; couscous, whether or not prepared
		-Uncooked pasta, not stuffed or otherwise prepared
1902 1100	AB	--containing eggs
1902 1900	AB	-Other
1902 2000	AB	-Stuffed pasta, whether or not cooked or otherwise prepared
		-Other pasta
1902 3010	AB	-Rice vermicelli , cooked
1902 3020	AB	-Bean vermicelli, cooked
1902 3030	AB	---Instant Noodle
1902 3090	AB	-Other
1902 4000	AB	-Couscous
19 01		Malt extract food preparations of flour, groats, meal, starch or malt extract, not containing cocoa or containing less than 40% by weight of cocoa calculated on a totally defatted basis, not elsewhere specified or included; food preparations of goods of headings No.04 01 to 04 04, not containing cocoa or containing less than 5%by weight of cocoa calculated on a totally defatted basis, not elsewhere specified or included
		-Preparations for infant use , put up for retail sale
1901 1010 暂	7AB	Powdered formulas
1901 1090	AB	Other
1901 2000	AB	-Mixes and cloughs for the preparation of bakers' wares of heading No.19 05
1901 9000 暂	AB	-Other
17 04		Sugar confectionery (including white chocolate), not containing cocoa
1704 1000	AB	-Chewing Gum, whether or not sugarcoated
1704 9000	AB	-Other
03 03		Fish, frozen, excluding fish fillets and other fish meat of heading No. 03 04
		-Salmonidae , excluding livers and roes
0303 1100	AB	-Sockeye salmon (red salmon) (Oncorhynchus nerka)
0303 1200	AB	-Other Pacific salmon (Oncorhynchus gorbuscha , Oncorhynchus keta, Oncorhynchus tshawytscha, Oncorhynchus kisutch, Oncorhynchus masou and Oncorhynchus rhodurus)

0303 1300	AB	-Atlantic salmon (<i>Salmo salar</i>) and Danube salmon
0303 1400	AB	-Trout (<i>Salmo trutta</i> , <i>Oncorhynchus mykiss</i> , <i>Oncorhynchus clarki</i> , <i>Oncorhynchus aguabonita</i> , <i>Oncorhynchus gilae</i> , <i>Oncorhynchus apache</i> and <i>Oncorhynchus chrysogaster</i>)
0303 1900		-Other
0303 1900 10	ABE	Chuan-shan taimen (hucho taimen) (excluding liver and roes) frozen
0303 1900 20	ABE	Qinting lenok (<i>brachymystax lenok</i>) (excluding liver and roes) frozen
0303 1900 90	AB	Other salmonidae (excluding liver and roes) frozen (excluding livers and roes)
0303 2300	AB	-Tilapia (<i>Oreochromis</i> spp.)
0303 2400	AB	--Catfish (<i>Pangasius</i> spp., <i>Silurus</i> spp., <i>Clarias</i> spp.)
0303 2500	AB	--Carp (<i>Cyprinus carpio</i> , <i>Carassius carassius</i> , <i>Ctenopharyngodon idellus</i> , <i>Hypophthalmichthys</i> spp. , <i>Cirrhinus</i> spp. , <i>Mylopharyngodon piceus</i>)
0303 2600		-Eel (<i>Anguilla</i> spp.)
0303 2600 10	ABE	Marbled eels , frozen (excluding livers and roes)
0303 2600 20	ABEF	European eels frozen (excluding livers and roes)
0303 2600 90	AB	Other eels (<i>anguilla</i> spp.) , frozen (excluding livers and roes)
0303 2900		-Other
0303 2900 01	AB	Nile perch (<i>Lates niloticus</i>) , frozen (excluding livers and roes)
0303 2900 90	AB	Snakeheads (<i>Channa</i> spp.) , frozen (excluding livers and roes)
		-Flatfish (<i>Pleuroneidae</i> , <i>Bothidae</i> , <i>Cynoglossidae</i> , <i>Soleidae</i> , <i>Scophthalmidae</i> and <i>Citharidae</i>) excluding livers and roes
		-Halibut (<i>Reinhardtius hippoglossoides</i> , <i>Hippoglossus</i> , <i>hippoglossus</i> , <i>Hippoglossus stenolepis</i>)
0303 3110 暂	AB	---Greenland Halibut
0303 3190	AB	-Other
0303 3200 暂	AB	-Plaice (<i>Pleuroneaes platessa</i>)
0303 3300	AB	-Sole (<i>Solea</i> spp.)
0303 3400	AB	-Turbot (<i>Psetta maxima</i>)
0303 3900	AB	-Other
		-Tunas (of the genus <i>Thunnus</i>) (tuna genus) , skipjack or stripe-bellied bonito or belteol bonito (oceanic bonito), excluding livers and roes
0303 4100	AB	-Albacore or longfinned tunas (<i>Thunnus alalunga</i>)
0303 4200	AB	-Yellowfin tunas (<i>Thunnus albacares</i>)

0303 4300	AB	-Skipjack or belted bonito
0303 4400	ABU	-Bigeye tunas(<i>Thunnus obesus</i>)
		-Atlantic and pacific bluefin tunas (<i>Thunnus thynnus</i> , <i>Thunnus orientalis</i>)
0303 4510	ABU	-Atlantic bluefin tunas
0303 4520	AB	-pacific bluefin tunas
0303 4600	AB	-Southern bluefin tunas (<i>Thunnus maccoyii</i>)
0303 4900	AB	-Other
0303 5100 暫	AB	-Herrings (<i>Clupea harengus</i> , <i>Clupea pallosii</i>)
0303 5300	AB	-sardines (<i>Sardina pilchardus</i> , <i>Sardintyps</i> spp.), sardinella (<i>Sardinella</i> spp.), brisling or sprats (<i>Sprattus sprattus</i>)
0303 5400	AB	-Mackerel (<i>Scomber scombrus</i> , <i>Scomber australasicus</i> , <i>Scomber japonicus</i>)
0303 5500	AB	-jack and horse mackerel(<i>Trachurus</i> spp.)
0303 5600	AB	--Cobia (<i>Rachycentron canadum</i>)
0303 5700	ABU	-Swordfish (<i>Xiphias gladius</i>)
		-Fish of the families bregmacerotidae, eulichthyidae, gadidae, macrouridae, melanonidae, merluccidae, moridae and muraenolepididae, excluding livers and roes
0303 6300 暫	AB	--Cod (<i>Gadus morhua</i> , <i>Gadus ogac</i> , <i>Gadus</i> <i>macrocephalus</i>)
0303 6400	AB	-Haddock (<i>Melanogrammus aeglefinus</i>)
0303 6500	AB	--Coalfish(<i>Pollachius virens</i>)
0303 6600	AB	-Hake (<i>Merluccius</i> spp., <i>urophycis</i> spp.)
0303 6700	AB	-Alaska Pollack (<i>Theragra chalcogramma</i>)
0303 6800	AB	-Blue whiiings (<i>Micromesistius poutassou</i> , <i>Micromesistius australis</i>)
0303 6900	AB	-Other
		-other fish , excluding Livers and roes
0303 8100		-Dogfish and Other sharks
0303 8100 10	ABEF	Whale shark (<i>Rhincodon</i>) , man-eating shark (<i>Ccharodon</i>), basking shark (<i>Cetorhinus</i>) (excluding livers and roes) , frozen
0303 8100 90	AB	Other dogfish and other sharks (excluding livers and roes) , frozen
0303 8200	AB	-Rays and skates(<i>Rajidae</i>)
0303 8300	ABU	-Toothfish (<i>Dissostichus</i> spp.)
0303 8400	AB	-Seabass (<i>Dicentrarchus</i> spp.)
		-Other
0303 8910	AB	-Scabber fish (<i>Trichurius</i>)
0303 8920	AB	-Yellow croaker(<i>Pseudosicaena</i>)

0303 8930	AB	-Tilapia
0303 8990		-Other
0303 8990 01	AB	Other perch , frozen (excluding livers and roes)
0303 8990 10	ABFE	Other endangered fish, frozen (excluding livers and roes)
0303 8990 90	AB	Other fish frozen (excluding livers and roes)
0303 9000		-Livers and roes
0303 9000 10	ABEF	Livers and roes of endangered fish, frozen
0303 9000 90	AB	Other livers and roes frozen

Appendix III

Supervision Requirements of Customs of Main Non-agricultural Imports

HS Code	Supervision Requirements	Article Description
85. 42		Electronic integrated circuits
		-electronic integrated circuits
8542. 3100		-Processors and controllers, whether or not combined with memories, converter, logic circuit, amplifier, clock and timing circuit or other circuit
8542. 3200		-Memories
8542. 3300		-amplifier
8542. 3900		-Other
8542. 9000		-Parts
85. 25		Transmission apparatus for radio-broadcasting or television , whether or not incorporating reception apparatus or sound recording or reproducing apparatus; television cameras; digital cameras and video camera recorders
8525. 5000	O	-Transmission apparatus
		-Transmission apparatus incorporating reception apparatus
8525. 6010	O	-Satellite earth station
8525. 6090	O	-Other
		-Television cameras, digital cameras and Video camera recorders
		-Television cameras
8525. 8011		-for special purposes
8525. 8011 10	3A	Radiation - resistant television cameras (capable of resisting fradiance $> 5 \times 10^4 \text{Gy}$ (Si) and not lowering operation quality)
8525. 8011 90	A	Other television cameras for special use
8525. 8012	A	-Broadcast quality not for special purposes
8525. 8013		-Other not for special purposes
8525. 8013 暂 01		Camera components for cellphones (including lens + CCD/CMOS + digital signal processing electric circuit)
8525. 8013 暂 02		High definition cameras (Must meet the following three conditions 1. lens element must used Five floors Glass lenses 2. used USB2. 0 high speed interface 3. hardware sensor pixel $\geq 130\text{W}$)
8525. 8013 90		Other telecameras not for special use and other camera

		components (the latter is composed of Non-broadcast - quality lens + CCD/CMOS + digital signal processing electric circuit)
		-Digital cameras
8525. 8021		-for special purposes
8525. 8022		-Single lens reflex not for special purposes
8525. 8025		not special purpose other interchangeable lens digital camera
8525. 8029		-Other not for special purposes
		---Video camera recorders
8525. 8031	A	-for special purposes
8525. 8032	A	-Broadcast quality not for special purposes
8525. 8033	A	-Household type not for special purposes
8525. 8039	A	-Other not for special purposes
85. 17		Telephone sets, including Telephones for cellular networks or for other wireless networks; other apparatus for the transmission or reception of voice, images or other data, including apparatus for communication in a wired or wireless network(such as a local or wide are network) .other than transmission or reception apparatus of heading 84. 43 , 85. 25 .85. 27 or 85. 28
		-Telephone sets, including Telephones for cellular networks or for other wireless networks
8517. 1100		-Line Telephone sets with cordless handsets
8517. 1100 10	AM	Cordless encrypting Telephones
8517. 1100 90	A	Other cordless Telephones
		-Telephones for cellular net works or for Other wire-less networks
8517. 1210		-Wireless Telephone handsets (including vehicle installed)
8517. 1210 11	AO	Full set of parts of GSM digital wireless Telephones handheld
8517. 1210 19	AO	Other CSM digital wireless Telephones handsets
8517. 1210 21	AO	Full set of parts of CDMA digital wireless phones handheld
8517. 1210 29	AO	Other CDMA wireless telephones handheld
8517. 1210 90	AO	Other wireless Telephones handsets (including vehicle installed)
8517. 1220		-Walkie-talkie
8517. 1290	0	-Other
8517. 1800		-Other
8517. 1800 10	AM	Other encrypting Telephones
8517. 1800 90	A	Other Telephones

		-Other apparatus for transmission or reception of voice , images or other data including apparatus for communication in a wired or wireless network (such as a local or wide area network)
		-base stations
8517. 6110		-Mobile communication base station
8517. 6110 10	0	CSM mobile communication base station
8517. 6110 20	0	CDMA mobile communication base station
8517. 6110 30		TACS mobile communication base station
8517. 6110 90	0	Other mobile communication base station
8517. 6190	0	-Other
		-machines for the reception, conversion and transmission or regeneration of voice images or other data , including switching and routing apparatus
		-Digital program - controlled telephonic or telephonic switching apparatus
8517. 6211		-Public telephonic switching apparatus, toll telephonic switching apparatus telegraphic switching apparatus
8517. 6212	O	-Mobile communication switching system
8517. 6219	A	-Other telephonic switching apparatus
		-optical communication equipments
8517. 6221	O	-optical Line Terminal equipments and pulse code modulation equipments
8517. 6222	O	-Optical transmission equipments for wave-division multiplexing
8517. 6229		-Other
8517. 6229 10	AMO	Optical communication encrypting routers
8517. 6229 90	OA	Other optical communication equipment
		-Other telecommunication apparatus for digit Line system
8517. 6231		----communication network synchronization equipments
8517. 6232		-Ethernet exchangers
8517. 6232 10	M	Non - optical communication encrypting ethernet exchangers
8517. 6232 90		Other Non - optical communication ethernet exchangers
8517. 6233	A	----IP Telephone signal Converters
8517. 6234	A	-Modem
8517. 6285	A	-Hubs
8517. 6236		-Routers
8517. 6236 10	M	Non - optical communication encrypting routers
8517. 6236 90		Other routers
8517. 6237		-wired network interface Card
8517. 6239	O	-Other
		-Other

8517. 6292		-Wireless network interface cards
8517. 6293		-fixed Wireless access station
8517. 6294		-Wireless headset
8517. 6299		-Other
		-Other
8517. 6910		-Other equipments in a Wireless network
8517. 6910 01	As	Portable receivers for calling ,promoting and paging
8517. 6910 90	AO	Other wireless communication equipments
8517. 6990		-Other equipments in a wired network
		-Parts
8517. 7010		-of Digital program-controlled telephonic or telegraphic switching appootus
8517. 7020		-Of optical line terminal equipments and pulse code modulation equipments
8517. 7030		-Of wireless telephone handsets (other than aerials)
8517. 7040		-of walkle-talkie (Other than aerials)
8517. 7060		-Laser receiving and transmitting unit of optical communication equipments
8517. 7070		-Antenna and parts thereof of heading No. 85. 17
8517. 7070 01		Antenna for wireless Telephones and telegrams
8517. 7070 90		Other antenna and parts thereof of heading No. 85. 17
8517. 7090		-Other
27 09		Petroleum oils and oils obtained from bituminous minerals, crude
2709 0000	4x7AByv	Petroleum oils and oils obtained from bituminous minerals, crude
27 01		Coal briquettes, ovoids and similar solid fuels manufactured from coal
		-Coal, whether or not pulverized, but not agglomerated
2701 1100 ^暂		-Anthracite
2701 1100 ^暂 10	47Axy	Anthracite(whether or not pulverized, but not agglomerated)
2701 1100 ^暂 90	7A	Anchracite filter medium
		-Bituminous Coal
2701 1210 ^暂	47Axy	---Coking Coal
2701 1290 ^暂	47Axy	-Other
2701 1900 ^暂	47Axy	-Other Coal
2701 2000 ^暂		-Briquettes, ovoids and similar solid fuels manufactured from coal
27 10		Petroleum oils and oils obtained from bituminous minerals, other than crude; preparations not elsewhere specified or included, containing by weight 70% or more

		of petroleum oils or of oils obtained from bituminous minerals, these oils being the basic constituents of the preparations waste oils
		-Petroleum oils and oils obtained from Bituminous minerals (other than crude) and preparations not elsewhere specified or included, containing by weight 70% or more of petroleum oils or of oils obtained from bituminous minerals, these oils being the basic constituents of the preparations; excluding biodiesel other than waste oils
		-Light oils and Preparations
2710 1210 暂		-Motor gasoline aviation gasoline
2710 1210 暂 01	47ABvy	Motor gasoline, aviation gasoline, excluding biodiesel (containing lead ≤ 0.013 L/g)
2710 1210 暂 02	47ABvy	Motor gasoline , aviation gasoline, excluding biodiesel (containing lead > 0.013 L/g)
2710 1220 暂	47ABvy	-Naphtha
2710 1230		-Rubber solvent, paint solvent extractive solvent
		-Other
2710 1291		-Nonene
2710 1291 暂 01	4Ay	Nonene excluding biodiesel, excluding biodiesel (Carbon 9 isomer mixtures containing > 90%)
2710 1291 90	4Ay	Other Nonene excluding biodiesel
2710 1299		-Other
2710 1299 暂 10	4Av	Mixture of isomers of isoamylene , excluding biodiesel
2710 1299 90	4Ay	Other light oils and preparations , excluding biodiesel (containing $\geq 70\%$ by weight of oils)
		-Other
		-Kerosene distillages
2710 1911 暂	47ABvy	-aviation Kerosene
2710 1912	47ABvy	-Lamp-Kerosene
2710 1919		-Other
2710 1919 暂 10	4y	Normal paraffin hydrocarbon (C _g - C ₁₃), excluding biodiesel
2710 1919 90	4yAB	Other kerosene distillages oils and preparations, excluding biodiesel
		-Diesel oils and Other fuel oils
2710 1922 暂	7ABv	-Fuel oils No. 5 - No. 7
2710 1923 暂	47ABvy	-Diesel engine
2710 1923 10	47ABvy	Vehicle diesel, excluding biodiesel
2710 1923 90	47ABvy	Other diesel, excluding biodiesel
2710 1929		-Other
2710 192910	7ABv	Paraffin oils excluding biodiesel(which < 20% by

		volume distil < 350°C , which > 80% by volume distil<550°C)
2710 1929 90	7ABv	Other fuel oils , excluding biodiesel
		-Lubricating oils, lubricating greases and Other heavy oils
2710 1991	4Ayx	-Lubricating grease
2710 1992	4Ayx	-Lubricating oils
2710 1993	4yx	-Basic oils for Lubricating oils
2710 1994	AB	-Liquid paraffin and heavy liquid paraffin
2710 1999	B	-Other
2710 2000	4Ay	-Petroleum oils and oils obtained from Bituminous minerals, other than crude; preparations not elsewhere specified or included, containing by weight 70% or more of petroleum oils or of oils obtained from bituminous minerals , these oils being the basic constituents of the preparations; containing biodiesel < 30% ,other than waste oils
		-Waste oils
2710 9100	9	--Containing polychlorinated biphenyls (PCBs) , polychlorinated terphenyls (PCTs) or polybrominated biphenyls (PBBs)
2710 9900	9	-Other
52 05		Cotton yarn (other than sewing thread), containing 85% or more by weight of cotton, not put up for retail sale
		-Single yarn, of uncombed fibres
5205 1100		-Measuring 714. 29 decitex or more (not exceeding 14 metric number)
5205 1200		-Measuring less than 714. 29 decitex but not less than 232. 56 decitex (exceeding 14 metric number but not exceeding 43 metric number)
5205 1300		-Measuring less than 23256 decitex but not less than 192. 31 decitex (exceeding 43 metric number but not exceeding 52 metric number)
5205 1400		-Measuring less than 192 31 decitex but not less than 125 decitex (exceeding 52 metric number but not exceeding 80 metric number)
5205 1500		-Measuring less than 125 decitex (exceeding 80 metric number)
		-Single yarn, of combed fibres
5205 2100		-Measuring 714 .29 decitex or more (not exceeding 14 metric number)
5205 2200		-Measuring less than 714 29 decitex but not less than 232 56 decitex (exceeding 14 metric number but not exceeding

		43 metric number)
5205 2300		-Measuring less than 232.56 decitex but not less than 192.31 decitex (exceeding 43 metric number but Not exceeding 52 metric number)
5205 2400		-Measuring less than 192.31 decitex but not less than 125 decitex (exceeding 52 metric number but not exceeding 80 metric number)
5205 2600		-Measuring less than 125 decitex but not less than 106.38 decitex (exceeding 80 metric number but not exceeding 94 metric number)
5205 2700		-Measuring less than 106.38 decitex but not less than 83.33 decitex (exceeding 94 metric number but not exceeding 120 metric number)
5205 2800		-Measuring less than 83.33 decitex (exceeding 120 metric number)
		-Multiple (folded) or cabled yarn, of uncombed fibres
5205 3100		-Measuring per single yarn 714.29 decitex or more (not exceeding 14 metric number per single yarn)
5205 3200		-Measuring per single yarn less than 714.29 decitex but not less than 232.56 decitex (exceeding 14 metric number but not exceeding 43 metric number per single yarn)
5205 3300		-Measuring per single yarn less than 232.56 decitex but not less than 192.31 decitex (exceeding 43 metric number but not exceeding 52 metric number per single yarn)
5205 3400		-Measuring per single yarn less than 192.31 decitex but not less than 125 decitex (exceeding 52 metric number but not exceeding 80 metric number per single yarn)
5205 3500		-Measuring per single yarn less than 125 decitex (exceeding 80 metric number per single yarn) -Multiple (folded) or cabled Yarn, of combed fibres
5205 4100		-Measuring per single yarn 714.29 decitex or more (not exceeding 14 metric number per single yarn)
5205 4200		-Measuring per single yarn less than 714.29 decitex but not less than 232.56 decitex (exceeding 14 metric number but not exceeding 43 metric number per single yarn)
5205 4300		-Measuring per single yarn less than 232.56 decitex but not less than 192.31 decitex (exceeding 43 metric number but not exceeding 52 metric number per single yarn)
5205 4400		-Measuring per single yarn less than 192.31 decitex but not

		less than 125 decitex (exceeding 52 metric number but not exceeding 80 metric number per single yarn)
5205 4600		-Measuring per single yarn less than 125 decitex but not less than 106. 38 decitex (exceeding 80 metric number but not exceeding 94 metric number per single yarn)
5205 4700		-Measuring per single yarn less than 106 .38 decitex but not less than 83. 33 decitex (exceeding 94 metric number but not exceeding 120 metric number per single yarn)
5205 4800		-Measuring per single yarn less than 83 .33 decitex (exceeding 120 metric number per single yarn)
52 06		Cotton yarn (other than sewing thread) , containing less than 85% by weight of cotton, not put up for retail sale
		-Single yarn, of uncombed fibres
5206 1100		-Measuring 714. 29 decitex or more (not exceeding 14 metric number)
5206 1200		-Measuring less than 714 .29 deritex but not less than 232. 56 decitex (exceeding 14 metric number but not exceeding 43 metric number)
5206 1300		-Measuring less than 232 .56 decitex but not less than 192. 31 decitex (exceeding 43 metric number but not exceeding 52 metric number)
5206 1400		-Measuring less than 192. 31 ciedtex but not less than 125 decitex (exceeding 52 metric number but not exceeding 80 metric number)
5206 1500		-Measuring less than 125 decitex (exceeding 80 metric number)
		-Single yarn, of combed fibres
5206 2100		-Measuring 714. 29 decitex or more (not exceeding 14 metric number)
5206 2200		-Measuring less than 714. 29 decitex but not less than 232. 56 decitex (exceeding 14 metric number but not exceeding 43 metric number)
5206 2300		-Measuring less than 232. 56 decitex but not less than 192. 31 decitex (exceeding 43 metric number but not exceeding 52 metric number)
5206 2400		-Measuring less than 192. 31 decitex but not less than 125 decitex (exceeding 52 metric number but not exceeding 80 metric number)
5206 2500		-Measuring less than 125 decitex (exceeding 80 metric number)
		-Multiple (folded) or cabled yarn, of uncombed fibres
5206 3100		-Measuring per single yarn 714. 29 decitex or more (not

		exceeding 14 metric number per single yarn)
5206 3200		-Measuring per single yarn less than 714 .29 decitex but not less than 232. 56 decitex (exceeding 14 metric number but not exceeding 43 metric number per single yarn)
5206 3300		-Measuring per single yarn less than 232. 56 decitex but not less than 192. 31 decitex (exceeding 43 metric number but not exceeding 52 metric number per single yarn)
5206 3400		-Measuring per single yarn less than 192. 31 decitex but not less than 125 decitex (exceeding 52 metric number but not exceeding 80 metric number per single yarn)
5206 3500		-Measuring per single yarn less than 125 decitex(exceeding 80 metric number per single yarn) -Multiple (folded) or cabled yarn, of combed fibres
5206 4100		-Measuring per single yarn 714. 29 decitex or more(not exceeding 14 metric number per single yarn)
5206 4200		-Measuring per single yarn less than 714. 29 decitex but not less than 232. 56 decitex (exceeding 14 metric number but not exceeding 43 metric number per single yarn)
5206 4300		-Measuring per single yarn less than 232. 56 decitex but not less than 192 31 decitex (exceeding 43 metric number but not exceeding 52 metric number per single yarn)
5206 4400		-Measuring per single yarn less than 192 .31 decitex but not less than 125 decitex (exceeding 52 metric number but not exceeding 80 metric number per single yarn)
5206 4500		-Measuring per single yarn less than 125 decitex (exceeding 80 metric number per single yarn)
84. 43		Printing machinery used for printing, cylinders and other printing components of heading 84.42; other printers Copying machines and facsimile machines, whether or not combined; Part and accessories thereof
		- printing machinery used for printing by means of plates, cylinders and other printing components of heading No. 84. 42
8443. 1100		-Offset printing machinery reel-fed
8443. 1200		-Offset printing machinery sheet-fed, office type (using sheets with one side not exceeding 22cm and the other side not exceeding 36cm in the unfolded state)
		-Other Offset Printing machinery
		-Sheet fed

8443. 1311		-single color
8443. 1312		-Double colors
8443. 1313		-four colors
8443. 1313 ^暂 01		Four - color sheet fed offset printing presses (single folio double side printing speed ≥ 16000 folio/hour)
8443. 1313 ^暂 02		Four - color sheet fed offset printing press (single folio double sides printing speed ≥ 13000 pcs/hr)
8443. 1313 ^暂 03		Four - color sheet fed offset printing press (sheet wise or full - sheet one piece single side printing speed ≥ 13000 pcs/hr)
8443. 1313 90		Other four - color sheet fed offset printing press (machines printing with commodities in Duty item 84. 42)
8443. 1319		-Other
8443. 1319 ^暂 01		Five(or higher) - color sheet fed offset printing press (speed ≥ 16000 pcs/h)
8443. 1319 ^暂 02		Five(or higher) - color sheet fed offset printing press (single folio double sides printing speed ≥ 13000 pcs/hr)
8443. 1319 ^暂 03		Five(or higher) - color sheet fed offset printings press(sheet wise or full - sheet one piece single side printing speed ≥ 13000 pcs/hr)
8443. 1319 90		Other sheet fed offset printing press (machines printing with commodities under heading No. 84. 42)
8443. 1390		-Other
8443. 1400		-Letterpress printing machinery, reelfed, excluding flexographic printing
8443. 1500		-Letterpress printing machinery Other than reelfed, excluding flexographic printing
8443. 1600		-Flexographic Printing machinery
8443. 1600 ^暂 01		Flexographic printing machinery, linear speed ≥ 300 m/min. Wide ≥ 800 mm flexographic presses, using goods in heading No. 84. 42 10 printing
8443. 1600 ^暂 02		Flexographic press , unit-Type , linear speed 160m / min, 250mm \leq width < 800mm (with function of stamping or holography or screen printing)
8443. 1600 90		Other flexographic printing machinery (flexographic press and machines printing with commodities under heading No.. 84. 42)
8443. 1700		--Gravure Printing machinery
8443. 1700 ^暂 01		Gravure printing machinery, linear speed ≥ 350 m/ min, using goods in heading No. 84. 42 to printing

8443. 1700 90		other gravure printing machinery, using goods in heading No.. 84. 42 to printing
		-Other
		-Screen Printing machinery
8443. 1921		---cylinder screen Press
8443. 1921 ^暫 01	O	Rotary screen printing machines for textile
8443. 1921 90	O	Other rotary screen printing machines (printing machinery using the commodities under heading No.84. 42)
8443. 1922		-Platen Screen Press
8443. 1922 ^暫 01	O	Flat screen printing machines for textile
8443. 1922 10	6	Disk presser for producing compact disks(machines using the commodities under heading No. 84. 42 for printing)
8443. 1922 90	O	Other platen screen presses (printing machinery using the commodities under heading No. 84. 42)
8443. 1929	O	-Other
8443. 1980	O	-Other
		-Other printers, copying machines and facsimile machines , whether or not combined
		-Machines which perform two or more of the functions of printing, copying or facsimile. transmission, capable of connecting to an automatic data processing machine or to a network
8443. 3110 ^暫		-Electrostatic photosensitive-type
8443. 3110 ^暫 10	M	Electrostatic - sensitive multifunctional integrated encrypting facsimile machines (capable of connecting to an automatic data processing machine or to a network)
8443. 3110 ^暫 90		Other electrostatic - sensitive multifunctional integrated machines (capable of connecting to an automatic data processing machine or to a network)
8443. 3190		-Other
8443. 3190 10	A	Other machines which perform two of the function of printing, copying(capable of connecting to an automatic data processing machine or to a network)
8443. 3190 20	AM	Other multifunctional integrated encrypting facsimile machines (machines with the function of printing, copying or both)
8443. 3190 90	A	Other machines which perform two or more of the function of printing, copying, facsimile transmission (other than machines which perform two of the function of printing , copying , capable of connecting to an automatic data processing machine or to a network)
		-Other, capable of connecting to an automatic data processing machine or to a net work

		-Printer of a kind solely used in the machines of heading No. 8471
8443. 3211	A	-Stylus printers
8443. 3212	A	-Laser printers
8443. 3213	A	----ink-jet-printers
8443. 3214	A	-Thermal printers
8443. 3219	A	-Other
		-Digital Printing machines
8443. 3221		----ink-jet Printing machines
8443. 3221 ^暫 01		Ink-jet printing equipment with breadth > 60cm (capable of connecting to an automatic data processing machine or to a network)
8443.3221 ^暫 02		Ink -jet printing apparatus, 297 mm < Wide ≤ 360mm , capable of connecting to an automatic data processing machine or to a network
8443. 3221 ^暫 90		Other digital ink-jet presses (capable of connecting to an automatic data processing machine or to a network)
8443. 3222		-Electrostatic photographic printing machines (laser printing machines)
8443. 3222 ^暫 01		Electrostatic photographic printing equipment (laser printers) with breadth > 32. 9cm (capable connecting to an automatic data processing machine or to a network)
8443. 3222 90		Other digital electrostatic photographic printers (laser printers) (capable connecting to an automatic data processing machine or to a network)
8443. 3229		-Other
8443. 3290		-Other
8443. 3290 10	AM	other encryption facsimile machine (capable connecting to an automatic data processing machine or to a network)
8443. 3290 90	A	Other presses (printers), copying machine, facsimile machine .and teleprinters (capable of connecting to an automatic data processing machine or to a network)
		-Other
		-Electrostatic photo-copying apparatus
8443. 3911		-Operating by reproducing the original image directly onto the copy(direct process)
8443. 3912		-Operating by reproducing the original image via an intermediate onto the copy (indirect process)
		-Other photocopying apparatus
8443. 3921		----Incorporating an optical system
8443. 3922		-of the contact type
8443. 3923		-thermo copying apparatus

8443. 3924		-thermo - sublimé copying apparatus
		-Digital Printing machines
8443. 3931		----ink-jet Printing machines
8443. 3932		-Electrostatic photographic printing machine (Laser printing machines)
8443. 3939		-Other
8443. 3990		-Other
		-Parts and accessories
		-Parts and accessories of Printing machinery used Ib. printing by means of plates , cylinders and other printing components of heading 84. 42
		-machines for uses ancillary to Printing
8443. 9111		-Roll material feeder
8443. 9111 暫 01	0	Automatic roll material feeder. feeding speed 12m/s
8443. 9111 90	0	Other roll material feeder
8443. 9119 暫	0	-Other
8443. 9190 暫		-Other
8443. 9190 暫 01	0	Remote controllers for controlling the use of ink by offset printing machine (including ink-color control devices, ink amount regulation elevices and ink fountain containers)
8443.9190 暫 90		Parts and accessories of other machine using the commodities under heading No.. 84. 42 for printing
		-Other
8443. 9910	0	-Machines for uses ancillary to Digital Printing machines
		-Parts of Digital Printing machines
8443. 9921		-Thermal print Heads
8443. 9929		-Other
8443. 9929 暫 01		Pie20electric ink gun(other than parts and accessories of machinery using the commodities under heading No. 8422 for printing)
8443. 9929 90		Other parts of digital printing machine (other than parts and accessories of machinery using the commodities under heading No.. 8422 for printing)
8443. 9990		-Other
8443. 9990 10		Photosensitive drums and toner cartridges containing photosensitive drums for other presses (printer), copying machine and facsimile machine
8443. 9990 90		Spare parts and accessories for other presses (printer), copying machine and facsimile machine
84. 71		Automatic data processing machines and units Thereof; magnetic or optical readers, machines for transcribing data onto data media in coded

		form and machines for processing such data, not elsewhere specified or included
		-Portable Automatic data processing machines, weighing not more than 10kg, consisting of at least a central processing unit, a keyboard and a display
8471. 3010	A	-Panel computer
8471. 3090	A	-Other
		-Other Automatic data processing machines
		--Comprising in the same housing at least a Central processing unit and an input and output unit, whether or not combined
8471. 4110	3	---mainframes
8471. 4120	3	-mini-computers
8471. 4140	A	-Microprocessings
8471. 4190		-Other
		-Other, presented in the form of systems
8471. 4910	3	-mainframes
8471. 4920	3	-mini-computers
8471. 4940		-Microprocessings
		-Other
8471. 4991		-Processing machines for the distributed control system
8471. 4999		-Other
		-Processing units other than those of subheading No. 8471. 41 or 8471. 49 , whether or not containing in the same housing one or two of the following types of unit; storage units , input units, output units
8471. 5010	3	-mainframes
8471. 5020	3	-mini-computers
8471. 5040		-Microprocessings
8471. 5040 01		Microprocessings, with display and host(whether or not containing in the same housing one or two of storage units, input or output units)
8471. 5040 90		Other processing unit of microprocessings (whether or not containing in the same housing one or two of storage units, input or output units)
8471. 5090		-Other
		— Input or output units, whether or not containing storage units in the same housing
8471. 6040		-Terminating machines for the huge computers, mainframes and mini-computers
8471. 6050		-Scanner
8471. 6060		-Digitizer

		-Keyboards , mice
8471. 6071		-Keyboards
8471. 6072		-mice
8471. 6090		-Other
		-storage units
8471. 7010		-rigid disk drives
8471. 7020		-Floppy disk drives
8471. 7030		---CD drives
8471. 7030 10		CD-R drives (for automatic data processing machines)
8471. 7030 90		Other CD drives (for automatic data processing machines)
8471. 7090		-Other
8471. 8000		-Other units of Automatic data processing machines
8471. 9000		-Other
8471. 9000 10		CD - R machines used exclusively for copying(also called CD repeaters)
8471. 9000 90		Magnetic or optical readers , not elsewhere specified or included (including machines for transcribing data onto data media in coded form and machines for processing such data)
84. 73		Parts and accessories (other than covers, carrying cases and the like) suitable for use solely or principally with machines of headings No. 84. 69 to 84. 72
8473. 1000		-Parts and accessories of the machines of heading No. 84. 69
		-Parts and accessories of the machines of heading No. 84. 70
8473. 2100		-of the electronic calculating machines of subheading No. 8470. 10, 8470. 21 or 8470. 29
8473. 2900		-Other
		-Parts and accessories of the machines of heading No. 84. 71
8473. 3010		-Of the machines of subheading 8471.4110, 8471. 4120, 8471. 4910, 8471. 4920, 8471. 5010 , 8471. 5020, 8471. 6090. 8471. 7010, 8471. 7020 , 8471. 7030 and 8471. 7090
8473. 3090		-Other
		-Parts and accessories of the machines of heading No. 84.72
8473. 4010 暂		-Banknote dispenser of automated teller
8473. 4090		-Other
8473. 4090 暂01		Parts and accessories of banknote sorters
8473. 4090 90		Parts and accessories of other office machines

8473. 5000		-Parts and accessories equally suitable for use with machines of two or more of the heading No. 84. 69 to 84. 72
44 01		Fuel wood, in logs, in billets, in twigs, in faggots or in similar forms wood in chips or particles sawdust and wood waste and scrap, whether or not agglomerated in logs, briquettes, pellets or similar forms
4401 1000	AB	-fuel wood, in logs, in billets, in twigs, in faggots or in similar forms
		-wood in chips or particles
4401 2100		--Coniferous
4401 2100 10	ABFE	Chips or particles of endangered coniferous wood
4401 2100 90	AB	Chips or particles of other coniferous wood
4401 2200		-Non-coniferous
4401 2200 10	ABFE	Chips or particles of endangered Non-coniferous wood
4401 2200 90	AB	Chips or particles of other Non-coniferous wood
		-Sawdust and wood Waste and scrap, whether or not agglomerated in logs, briquettes, pellets or similar forms
4401 3100	ABP	-wood pellets
4401 3900	ABP	-Other
44 03		Wood in the rough, whether or not stripped of bark or sapwood, or roughly squared
4403 1000		-Treated with paint, stains, Creosote or other Pre-Servatives (treated with paint, stains, creosote or other preservatives)
4403 1000 10	8AF	Other taxaceae wood in the rough (treated with paint, stains, creosote or other preservatives)
4403 1000 20	8AF	Other endangered coniferous wood in the rough (treated with paint, stains, creosote or other presevatives)
4403 1000 90	8A	Other wood in the rough, treated with paint, stains, creosote or other preservatives
		-Other Coniferous
4403 2010		-Korean Pine and Mongolian scotch Pine
4403 2010 10	8AEF	Other korean pine wood in the rough(other than the wood treated with paint, stains, creosote or other preservatives)
4403 2010 90	8A	Other mongolian scotch pine in the rough(other than the wood treated with paint, stains, creosote or other preservatives)
4403 2020	8AF	-White Pine (spruce and fir)

4403 2020 10	8AF	Endangered white pine, spruce and fir wood in the rough
4403 2020 90	8A	Other white pine , spruce and fir, wood in the rough
4403 2030	8A	-Radiata Pine
4403 2040	8A	-Larch
4403 2050	8A	-Douglas fir
4403 2090		-Other
4403 2090 10	8AF	Other Endangered coniferous wood in the rough
4403 2090 20	8AF	Other endangered coniferous in the rough
4403 2090 90	8A	Other coniferous wood in the rough
		-Other of tropical wood specified in Subheading note 2 to this Chapter
4403 4100	8A	-Dark red Meranti, Light red Meranti and Meranti Bakau
		-Other(of tropical Non-coniferous wood specified in subheading note I to this chapter)
4403 4910	8A	-Teak
4403 4920	8A	-Okoume (Au koumed)
4403 4930	8A	-Dipterocarpus spp. Keruing
4403 4940	8A	-Kapur (Dryobalanops spp.)
4403 4950	8A	---Intsia spp. (Mengaris)
4403 4960	8A	-Koompassia spp. (Mengaris or Kempas)
4403 4970	8A	-Anisopter spp.
4403 4990		-Other
4403 4990 10	8AF	Endangered tropical wood in the rough, specified in Subheading note 2 to this Chapter(other than the wood treated with paint, stains, creosote or other preservatives)
4403 4990 90	8A	Tropical wood in the rough, specified in Subheading note 2 to this Chapter (other than the wood treated with paint , stains, creosote or other preservatives)
		-Other
4403 9100	8A	-of oak (Quercus spp.)
4403 9200	8A	-Of beech (Fagus spp.)
		-Other
4403 9910	8A	-of nan mu (Phoebe)
4403 9920	8A	-of Camphor wood
4403 9930	8AF	-Of rosewood
4403 9940	8A	-Of Kiri (Paulownia)
4403 9950	8A	-Ash
4403 9960	8A	-North American hard wood (including cherry, walnut and maple)
4403 9980		-Other, temperate Non-coniferous , not specified
4403 9980 10	8AF	Other temperate 20ne endangered Non-coniferous wood(other than the wood treated with paint, stains, creosote or other preservatives) not elsewhere specified or

		included
4403 9980 90	8A	Other temperate 20ne Non-coniferous wood (other than the wood treated with paint, stains, creosote or other preservatives) not elsewhere specified or included
4403 9990		-Other
4403 9990 11	8AEF	Puncture vine wood in the rough of South America (other than the wood treated with paint , stains , creosote or other preservatives)
4403 9990 12	8AEF	" Chinese eaglewood and similar chinese eaglewood (other than the wood treated with paint , stains , creosote or other preservatives) "
4403 9990 19	8AEF	Other endangered Non - coniferous wood in the rough (other than the wood treated with paint, stains, creosote or other preservatives)
4403 9990 90	8A	Other Non-coniferous wood in the rough (other than the wood treated with paint, stains, creosote or other preservatives) not elsewhere specified or included
44 07		Wood sawn or chipped lengthwise, sliced or peeled , whether or not planed, sanded or finger-jointed, of a thickness exceeding 6 mm
		-Coniferous
4407 4010		-Korean Pine and Mongolian scotch Pine
4407 4010 11	ABEF	Korean pine wood sawn or chipped lengthwise, sliced or peeled, end-jointed, thickness > 6mm
4407 4010 19	AB	Mongolian scotch pine wood sawn or chipped length-wise , sliced or peeled, end-jointed , thickness > 6mm
4407 4010 91	4ABEFxy	Wood sawn or chipped lengthwise, sliced or peeled, of Korean pine, Not end - jointed , thickness > 6mm
4407 4010 99	4ABxy	Wood sawn or chipped lengthwise, sliced or peeled, of Mongolian scotch pine, not encl - jointed, thickness > 6mm
4407 1020		-White pine (spruce and fir)
4407 1020 11	ABEF	Wood sawn or chipped lengthwise , sliced or peeled, of endangered white pine (spruce and fir) , end -jointed, thickness > 6mm
4407 1020 19	AB	Wood sawn or chipped lengthwise, sliced or peeled, of other white pine (spruce and fir) , end - jointed, thickness > 6mm
4407 1020 91	4ABEFxy	Wood sawn or chipped lengthwise , sliced or peeled, of endangered white pine (spruce and fir) not end - jointed, thickness > 6mm
4407 1020 99	4ABxy	Wood sawn or chipped lengthwise, sliced or peeled, of other white pine (spruce and fir) , not end - jointed, thickness > 6mm

4407 1030		-Radiata Pine
4407 1030 10	AB	Wood sawn or chipped lengthwise, sliced or peeled, of radiata pine, end-jointed, thickness > 6mm
4407 1030 90	4ABxy	Wood sawn or chipped lengthwise, sliced or peeled, of radiata pine, not end-jointed, thickness > 6mm
4407 1040		-Douglas fir
4407 1040 10	AB	Wood sawn or chipped lengthwise, sliced or peeled, of douglas fir (<i>Pseudotsuga menziesii</i>), end-jointed, thickness > 6mm
4407 1040 90	4ABxy	Wood sawn or chipped lengthwise, sliced or peeled, of douglas fir (<i>Pseudotsuga menziesii</i>) not end-jointed, thickness > 6mm
4407 1090		-Other
4407 1090 11	FEAB	other endangered coniferous wood sawn or chipped lengthwise, sliced or peeled, end-jointed, thickness>6mm
4407 1090 19	AB	Other coniferous wood sawn or chipped lengthwise, sliced or peeled, end-jointed, thickness > 6mm
4407 1090 91	FEAB4xy	Other endangered coniferous wood sawn or chipped lengthwise sliced or peeled, not end-jointed, thickness > 6mm
4407 1090 99	AB4xy	other coniferous wood sawn or chipped lengthwise, sliced or peeled not end-jointed, thickness > 6mm
		-Of tropical wood specified in Subheading note 2 to this chapter
4407 2100		-Mahogany (<i>Swietenia</i> spp.)
4407 2100 10	FEAB	Wood sawn or chipped lengthwise , sliced or peeled, of mashogany (<i>swietenia</i> spp.) , end-jointed, thickness >6mm
4407 2100 90	4ABEFxy	Wood sawn or chipped lengthwise, sliced or peeled, of mashogany (<i>swietenia</i> spp.) , not - end-jointed, thickness > 6mm
4407 2200		--Virola, Imbuia and Balsa
4407 2200 10	AB	Wood sawn or chipped lengthwise sliced or peeled, of virola imhuia and balsa, end-jointed, thickness >6mm
4407 2200 90	4ABxy	Wood sawn or chipped lengthwise, sliced or peeled, of virola imbuia and balsa not end-jointed , thickness >6mm
4407 2500		-Dark red Meranti, Light red Meranti and Merand Bakau
4407 2500 10	AB	Wood sawn or chipped lengthwise, sliced or peeled, of Dark Red Meranti, Light Red Meranti and Meranti Bakau, end-jointed, thickness > 6mm
4407 2500 90	4xAB	Wood sawn or chipped lengthwise, sliced or peeled, of Dark Red Meranli, Light Red Meranti and Meranli Bakau, not end-jointed , thickness > 6mm
4407 2600		-White Lauan White Meranti, White Seraya, Yellow Meranti and Alan

4407 2600 10	AB	Wood sawn or chipped lengthwise, sliced or peeled, of White Lauan White Meranti, White Seraya, Yellow Meranti and Alan, end-jointed, thickness >6mm
4407 2600 90	y4xAB	Wood sawn or chipped lengthwise , sliced or peeled, of White Lauan White Meranti, White Seraya, Yellow Meranti and Alan, not end-jointed, thickness > 6mm
4407 2700		-Sapelli
4407 2700 10	AB	Wood sawn or chipped lengthwise, sliced or peeled, of sapelli, end-jointed, thickness > 6mm
4407 2700 90	4ABxy	Wood sawn or chipped lengthwise, sliced or peeled, of sapelli , not end-jointed thickness > 6mm
4407 2800		---Iroko
4407 2800 10	AB	Wood sawn or chipped lengthwise, sliced or peeled, of Iroko end - jointed , thickness > 6mm
4407 2800 90	4ABxy	Wood sawn or chipped lengthwise, sliced or peeled, of Iroko not end - jointed , thickness > 6mm
		-Other
4407 2910		-Teak
4407 2910 10	AB	Wood sawn or chipped lengthwise, sliced or peeled, of teak, end-jointed, thickness > 6mm
4407 2910 90	y4xAB	Wood sawn or chipped lengthwise, sliced or peeled, of teak, not end-jointed , thickness > 6mm
4407 2920		-Acajou
4407 2920 10	AB	Wood sawn or chipped lengthwise, sliced or peeled, of acajou, end-jointed , thickness > 6mm
4407 2920 90	AB	Wood sawn or chipped lengthwise , sliced or peeled, of acajou, not end-jointed , thickness > 6mm
4407 2930		-Merban
4407 2930 10	AB	Wood sawn or chipped lengthwise, sliced or peeled, of merban, end-jointed, thickness > 6mm
4407 2930 90	AB	Wood sawn or chipped lengthwise, sliced or peeled, of merban, not end-jointed thickness > 6mm
4407 2990		-Other
4407 2990 11	FEAB	Wood sawn or chipped lengthwise, sliced or peeled, of Ramin wood, end-jointed, thickness > 6mm
4407 2990 12	FEAB	Other endangered tropical wood, not elsewhere specified or included in subheading note 2 to this Chapter, sawn or chipped lengthwise, sliced or peeled, end-jointed, thickness > 6mm
4407 2990 19	AB	Wood sawn or chipped lengthwise, sliced or peeled, of other tropical wood not elsewhere specified or included in subheading note 2 to this Chapter, end-jointed, thickness > 6mm

4407 2990 91	4xAFEB	Other tropical endangered wood, not elsewhere specified or included in subheading note 2 to this Chapter, sawn or chipped lengthwise, sliced or peeled, not end-jointed, thickness > 6mm
4407 2990 99	4xAB	Other tropical wood not elsewhere specified or included in subheading note 2 to this Chapter, sawn or chipped lengthwise, sliced or peeled, not end-jointed, thickness >6mm
		-Other
4407 9100		-of oak (<i>Quercus</i> spp.)
4407 9100 10	AB	Wood sawn or chipped lengthwise , sliced or peeled , of oak (<i>Quercus</i> spp.) , end-jointed, thickness > 6mm
4407 9100 90	y4xAB	Wood sawn or chipped lengthwise , sliced or peeled, of oak (<i>Quercus</i> spp.) , not end-jointed, thickness >6mm
4407 9200		-Of beech (<i>Fagus</i> spp.)
4407 9200 10	ABE	Wood sawn or chipped lengthwise, sliced or peeled, of beech (<i>Fagus</i> spp.) , end-jointed, thickness >6mm
4407 9200 90	4ABExy	Wood sawn or chipped lengthwise , sliced or peeled, of beech (<i>Fagus</i> spp.), not end-jointed, thickness >6mm
4407 9300		-of maple (<i>Acer</i> spp.)
4407 9300 10	AB	Wood sawn or chipped lengthwise, sliced or peeled, of maple, end-jointed, thickness > 6mm
4407 9300 90	4ABxy	Wood sawn or chipped lengthwise, sliced or peeled, of maple, not end - jointed , thickness > 6mm
4407 9400		-of cherry (<i>Prunus</i> spp.)
4407 9400 10	AB	Wood sawn or chipped lengthwise, sliced or peeled, of cherry, end-jointed, thickness > 6mm
4407 9400 90	4ABxy	Wood sawn or chipped lengthwise, sliced or peeled, of cherry , not end - jointed , thickness > 6mm
4407 9500		-of Ash (<i>Fraxinus</i> , spp.)
4407 9500 10	AB	Wood sawn or chipped lengthwise, sliced or peeled, of ash, end-jointed, thickness > 6mm
4407 9500 90	4ABxy	Wood sawn or chipped lengthwise, sliced or peeled, of ash, not end – jointed, thickness > 6mm
		-Other
4407 9910		-of Camphor-wood, nanmu or rosewood
4407 9910 10	AFEB	Wood sawn or chipped lengthwise, sliced or peeled, of camphor-wood, nanmu or rosewood, end-jointed, thickness > 6mm
4407 9910 90	y4xAFEB	Wood sawn or chipped lengthwise, sliced or peeled, of camphor-wood nanmu or rosewood not end-jointed, thickness > 6mm
4407 9920		-Of paulownia

4407 9920 10	AB	Wood sawn or chipped lengthwise, sliced or peeled, of paulownia, end-jointed, thickness > 6mm
4407 9920 90	AB	Wood sawn or chipped lengthwise, sliced or peeled, of paulownia, not end-jointed, thickness > 6mm
4407 9930		-North American hardwood (including Walnut)
4407 9930 10	AB	Wood sawn or chipped lengthwise, sliced or peeled, of North American broadleaf hardwood (including walnut) end-jointed, thickness > 6mm
4407 9930 90	AB	Wood sawn or chipped lengthwise, sliced or peeled, of North American broadleaf hardwood (including walnut) not end-jointed, thickness >6mm
4407 9980		-Other temperate, Non-Coniferous wood
4407 9980 11	FEAB	Wood sawn or chipped lengthwise, sliced or peeled, endangered Non-coniferous wood, of temperate, end-jointed , thickness > 6mm
4407 9980 19	AB	Wood sawn or chipped lengthwise, sliced or peeled, of temperate zone, Non-coniferous wood, end-jointed, thickness > 6mm
4407 9980 91	4ABEFxy	Wood sawn or chipped lengthwise, sliced or peeled, endangered Non-coniferous wood of temperate, not end-jointed, thickness > 6mm
4407 9980 99	4ABxy	Wood sawn or chipped lengthwise, sliced or peeled, of temperate zone Non-coniferous wood not end-jointed, thickness > 6mm
4407 9990		-Other
4407 9990 11	AFEB	Wood sawn or chipped lengthwise, sliced or peeled, of Puncture vine wood of South America end -jointed, thickness > 6mm
4407 9990 12	AFEB	Wood sawn or chipped lengthwise, sliced or peeled, of Chinese eaglewood and similar chinese eagle-wood, end-jointed , thickness > 6mm
4407 9990 15	AFEB	Wood sawn or chipped lengthwise, sliced or peeled, of other endangered wood, end - jointed, thickness > 6mm
4407 9990 19	AB	other wood sawn or chipped lengthwise, sliced or peeled, end-jointed thickness > 6mm
4407 9990 91	y4xAFEB	Wood sawn or chipped lengthwise, sliced or peeled, of Puncture vine wood of South America not end -jointed, thickness > 6mm
4407 9990 92	y4xAFEB	Wood sawn or chipped lengthwise, sliced or peeled, of Chinese eaglewood and similar chinese eaglewood, not end - jointed , thickness > 6mm
4407 9990 95	y4xAFEB	Wood sawn or chipped lengthwise, sliced or peeled, of other endangered wood, not end - jointed, thickness > 6mm

4407 9990 99	y4xAB	Other wood sawn or chipped lengthwise, sliced or peeled, not end-jointed, thickness > 6mm
64 03		Footwear with outer soles of rubber, plastics, leather or composition leather and uppers of leather
		-Sports footwear
6403 1200		-Ski-boots, cross-country Ski Footwear and snow board boots
6403 1200 10	FE	Ski-boots, with uppers of leather of wild animals
6403 1200 90		Ski-boots, cross-country ski footwear and snow-board boots, with outer soles of rubber, plastics, leather or composition leather and uppers of leather
6403 1900		-Other
6403 1900 10	FE	Other sports footwear with uppers of leather of wild animals
6403 1900 90		Other sports footwear with outer soles of rubber, plastics, leather or composition leather and uppers of leather
6403 2000		-Footwear with outer soles of leather, and uppers which consist of leather straps across the instep and around the big toe
6403 2000 10	FE	Footwear with outer soles of leather and with uppers of leather straps of wild animals
6403 2000 90		Footwear with outer soles of leather and with uppers which consist of leather straps across the instep and around the big toe
6403 4000		-Other Footwear, incorporating a protective metal toe-cap
6403 4000 10	FE	Other footwear, incorporating a protective metal toe-cap with uppers of leather of wild animals
6403 4000 90		Other footwear, incorporating a protective metal toe-cap, with outer soles of rubber, plastics, leather or composition leather and uppers of leather
		-Other footwear with outer soles of leather
		--Covering the ankle
		---Covering the ankle but not Covering the calf, by length of inner soles
6403 5111		-Less than 24cm
6403 5111 10	FE	Other footwear with outer soles of leather and uppers of leather covering the ankle but lower than crus, with uppers of leather of wild animals (inner sole length < 24cm other than sports boots)
6403 5111 90		Footwear with outer soles of leather and uppers of leather covering the ankle but lower than crus, with uppers of leather (inner sole length < 24cm, other than sports boots)
6403 5119		-Other

6403 5119 10	FE	Other footwear with outer soles of leather and uppers of leather covering the ankle but lower than crus, with uppers of leather of wild animals, other than sports footwear
6403 5119 90		other footwear with outer soles of leather and uppers of leather, covering the ankle but lower than crus, other than sports footwear
		-Other, by length of inner soles
6403 5191		-Less than 24cm
6403 5191 10	FE	Footwear with outer soles of leather and uppers of leather, covering the ankle , with uppers of leather of wild animals(inner soles < 24cm, other than sports footwear)
6403 5191 90		Footwear with outer soles of leather and uppers of leather, covering the ankle (inner soles < 24cm other than sports footwear)
6403 5199		-Other
6403 5199 10	FE	Footwear with outer soles of leather and uppers of leather, covering the ankle , with uppers of leather of wild animals(other than sports footwear)
6403 5199 90		Footwear with outer soles of leather and uppers of leather, covering the ankle, with uppers of leather (other than sports footwear)
6403 5900		-Other
6403 5900 10	FE	Other footwear with outer soles of leather and upers of leather of wild animals (other than sports footwear)
6403 5900 90		other footwear with outer soles of leather and upers of leather of other animals (other than sports footwear)
		-Other footwear
		--Covering the ankle
		---Covering the ankle but not Covering the calf, by length of inner soles
6403 9111		-Less than 24cm
6403 9111 10	FE	Footwear with outer uper of feather, covering the ankle but lower than crus, with upers of wild animal leather, inner soles of rubber or plastic and the length < 24cm, outer soles of composition leather, other than sports footwear
6403 9111 90		Footwear with outer uper of feather, lowering the ankle but lower than crus, with inner soles of rubber or plastic and the length < 24cm,outer soles of composition leather other than sports footwear
6403 9119		-Other
6403 9119 10	FE	Footwear covering the ankle but lower than crus, with outer soles of rubber, plastics, leather of composition leather and upers of wild animal feather, other than sports footwear

6403 9119 90		Footwear covering the ankle but lower than crus, with outer soles of rubber, plastics, leather of composition leather and uppers of leather, other than sports footwear
		-Other, by length of inner soles
6403 9191		-Less than 24cm
6403 9191 10	FE	Footwear covering ankle , with outer uppers of leather of wild animal inner soles of rubber, plastic and the length < 24cm, outer soles of composition leather, other than sports footwear
6403 9191 90		Footwear covering ankle , with outer uppers of leather, inner soles of rubber, plastic and the length < 24cm , outer soles of composition leather, other than sports footwear
6403 9199		-Other
6403 9199 10	FE	Footwear covering the ankle with outer soles of rubber, plastics , leather or composition leather and uppers of leather, of wild animals other than sports footwear
6403 9199 90		Footwear covering the ankle with outer soles of rubber , plastics, leather or composition leather and uppers of leather, of other animals, other than sports footwear
6403 9900		-Other
6403 9900 10	FE	Other footwear with outer soles of rubber, plastics, leather or composition leather and uppers of leather of wild animals , other than sports footwear
6403 9900 90		Other footwear with outer soles of rubber, plastics, leather or composition leather and uppers of leather of other animals, other than sports footwear
64 04		Footwear with outer soles of rubber, plastics, leather or composition leather and uppers of textile materials
		-Footwear with outer soles of rubber or plastics
6404 1100		-sports Footwear , tennis shoes , basketball shoes, gym shoes, training shoes and the like
6404 1900		-Other
6404 2000		-Footwear with outer soles of leather or composition
64 02		Other footwear with outer soles and uppers of rubber or plastics
		-sports Footwear
6402 1200		-Ski-hoots, cross-country ski footwear and snow-board boots
6402 1200 10	EF	Inverted skiing boot with rubber plastic sole and hair of endangered animals (including cross-country skiing boots and hoots for skin)
6402 1200 90		Other ski-hoots cross-country ski footwear and snowboard boots, with outer soles and upper of rubber or plastics

6402 1900		-Other
6402 1900 10	EF	Other sports shoes and hoots containing endangered animal hair and hide (rubber and plastic shoes and inverted)
6402 1900 90		Other sport footwear, with outer soles and uppers of rubber or plastics (rubber and plastic shoes and inverted)
6402 2000		-Footwear with upper straps or thongs Assembled to the sole by means of plugs
		-Other footwear
6402 9100		--Covering the ankle
		-Other
6402 9910		-with uppers of rubber
		-with uppers of plastics
6402 9921		-With substrate of woven fabrics or other textile materials
6402 9929		-Other
		leather
40 01		Natural rubber, balata, gutta-percha, guayule, chicle and similar natural gums, in primary forms or in plates, sheets or strip
4001 1000 暂	AB	-natural rubber latex whether or not prevulcanized
		-Natural rubber in other forms
4001 2100 暂	AB	-Smoked sheets
4001 2200 暂		-Technically specified natural rubber (TSNR)
4001 2900		-Other
4001 3000		-Balata, gutta-percha, guayule, chicle and similar natural gums
40 05		Compounded rubber, unvukanized, in primary forms or in plates, sheets or strip
4005 1000		-Compounded with Carbon black or Silica
4005 2000		-Solutions dispersions other than chose of subheading No. 4005 10
		-Other
4005 9100		-Plates, sheets and strip
4005 9900		-Other
40 02		Synthetic rubber and factice derived from oils, in primary forms or in plates, sheets or strip mixtures of any products of heading No. 40 01 with any product of this heading, in primary forms or in plates, sheets or strip
		-Styrene-butadiene rubber (SBR) carboxylated styrene-butadiene rubber (XSBR)
		-Latex
4002 1110		---Carboxylated Styrene-butadiene rubber (XSBR)

4002 1190		-Other
		-Other
		---in primary forms
4002 1911		-SBR not worked
4002 1912		-SBR, oil-Filled
4002 1913		-SBR thermo-plasticated
4002 1944		-SBR oil-filled and thermo-plasticated
4002 1919		-Other
4002 1990		-Other
4002 1990 01		Except simple treatment of styrene - butadiene rubber or styrene - butadiene - styrene block copolymer (referring to compression extrusion in order to facilitate transportation)
4002 1990 90		Other styrene - butadiene rubber and carboxy lated styrene - butadiene rubber, plates, sheets or strip (except those under item 4002199010)
		-butadiene rubber (BR)
4002 2010		---in primary forms
4002 2090		-Other
		-Isobutene-isoprene (butyl) rubber (IIR) hato-isobutene-isoprene rubber (CIIR or BIIR)
		--Isobutene-Isoprene (butyb Rubber (IIR)
4002 3110		---in primary forms
4002 3190		-Other
		-Other
4002 3910		---in primary forms
4002 3990		-Other
		-Chloroprene (ehlorobutadiene) Rubber (CR)
4002 4100		-Latex
		-Other
4002 4910		---in primary forms
4002 4990		-Other
		-Acrylonitrile-butadien rubber(NBR)
4002 5100		-Latex
		-Other
4002 5910		---in primary forms
4002 5990		-Other
		-Isoprene rubber (IR)
4002 6010		---In primary forms
4002 6090		-Other
		-Ethylene-propylene-Non-conjugated diene rubber (EPDM)
4002 7010		---in primary forms

4002 7090		-Other
4002 8000		-Mixtures of any product of heading No. 40 01 with any product of this heading
		-Other
4002 9100		-Latex
		-Other
		-Other synthetic rubber
4002 9911		----In primary forms
4002 9919		-Other
4002 9990		-Other