

Guide of China's Import from the Philippines 2015



ASEAN-CHINA CENTRE
中国 — 东盟中心

Contents

I . Overview of China-ASEAN Economic and Trade Cooperation	1
II . Profile of China-Philippines Bilateral Trade.....	2
III. List of China's Agricultural Imports from the Philippines.....	4
(I) Selection Method	4
(II) List of Main Agricultural Imports	4
(III) Situation of Import Tariff Quotas of China's Agricultural Products	7
1. List of agricultural products subject to the administration of import tariff quotas	7
2. The import tariff quotas management system of agricultural products	7
(IV) Distribution of Import Tariff Quotas of Agricultural Products in 2015.....	12
1. Distribution of import tariff quotas of grains.....	12
2. Distribution of import tariff quota of cotton	14
3. Distribution of import tariff quota of sugar	15
IV. List of China's Non-Agricultural Imports from the Philippines.....	18
(I) Selection Method	18
(II) List of Main Non-Agricultural Imports	18
V . Process Management of China's Imports from The Philippines	20
(I) Inspection & Quarantine	20
(II) Customs Clearance	21
(III) Cooperation between customs and inspection & quarantine departments.....	23
Appendix I	25
Appendix II	26
Appendix III	53

I . Overview of China-ASEAN Economic and Trade Cooperation

China-ASEAN FTA is the first FTA that China signed with other economies. And it is the biggest established FTA. ASEAN is made up by the ten member states of Indonesia, Malaysia, Philippines, Singapore, Thailand, Brunei Darussalam, Viet Nam, Lao PDR, Myanmar and Cambodia which covers 1.85 billion people and 1.4 thousand square kilometers. China and ASEAN Member signed the Framework Agreement on China-ASEAN Comprehensive Economic Cooperation at the sixth China-ASEAN Summit in November 2002. The establishment of China-ASEAN free trade area enhances the close economic and trade relations between the two parties, and also contributes to the economic development of Asia and the world at large.

According to the database of the commodity trade of the United Nations, China-ASEAN trade rose at an annual rate of about 20% from over \$50 billion to \$480 billion between 2002 and 2014. And the bilateral accumulated investment is over \$1000. China-ASEAN trade increased fast except that in 2012 since the Global Financial Crisis of 2008, and accounted for 11.16% of China's foreign trade. China-ASEAN trade had been in favor of the ASEAN side during the 2000-2011 period. But China's trade surplus appeared in 2012 and the surplus was \$44.53 billion in 2013. Increasing imports from ASEAN should receive much attention, and it will contribute to China's trade balance.

ASEAN has comparative advantages in products such as rice, fish, wood, etc. in terms of the weather and natural resources. China should import the products more from ASEAN. Since the entrance into the WTO, China's agricultural foreign trade developed fast, but China's agricultural imports increased faster than its agricultural exports and its agricultural trade deficit grew. On one hand, living standards improvement induces the rapid increase of high-quality agricultural products. On the other hand, China's agriculture faces strong competition as agricultural market is open. China-ASEAN agricultural trade developed slowly and the share of China's agricultural foreign trade decreased although ASEAN was still an important source of China's agricultural imports. Agricultural trade between China and ASEAN dropped by about 5% in 2013. The share of China-ASEAN agricultural trade in China's

agricultural foreign trade declined to 9.3% in 2013 from 10.4% in 2009. The gap between supply and demand of grain exists in China. China and ASEAN are complementary in agricultural products such as fruits, vegetables, fish and etc. These can contribute to economic and trade cooperation of the two parties. Since China-ASEAN FTA strategy was carried out, the two parties cut the import tariffs down and promoted trade facilitation such as the procedures of customs clearance, the etc. The bilateral trade liberalization has made great progress. ASEAN suppliers are lack of understanding import quota administration, inspection and quarantine, import operators, etc. in agricultural trade. This hindered the development of agricultural trade between the two parties.

China will widen the opening up to ASEAN, benefit ASEAN on a basis of equality and mutual benefit in the new era of deepening reform and expanding opening-up. Xi Jinping, China's president, pointed out, "China is pleased to improve China-ASEAN FTA, and will manage to bring the bilateral trade up to \$1 trillion by 2020", and "China is pleased to reinforce sea cooperation, make good use of the China-ASEAN Investment Cooperation Fund", and jointly build the 21st Century Maritime Silk Road. In the new era, to compile *The Guide of China's Imports from ASEAN* will inject new impetus into the bilateral economic and trade development.

II . Profile of China-Philippines Bilateral Trade

The economic and trade cooperation between China and the Philippines has gradually become diversified, and the bilateral trade scale has expanded continuously, with a promising prospect. In 2014, the total volume of bilateral trade between China and the Philippines exceeded \$40 billion, hitting a new record high, up 13.7% year on year, accounting for 9.3% of the total volume of bilateral trade between China and the ten ASEAN member countries. The Philippines is known as the 6th largest trade partner of China in the ASEAN, of which the total volume of agricultural trade between China and the Philippines was \$2.2 billion. The import volume of China from the Philippines and its export volume to the Philippines were \$20.501 billion and \$22.78 billion, respectively up 12.4% and 14.9% year on year. China had a trade surplus with the Philippines, with a surplus amount of \$2.279 billion.

In terms of product structure, the bilateral exports involve not only the other side's superior products and complementary products, but also emerging products such as

automobile. The Philippines is rich in mineral resources, China is still the main object country of the Philippines' mineral exports, a majority of electronic products taking up the largest export share of the Philippines have also been sold to China, while China-made industrial products such as mechanical equipment have become main goods imported by the Philippines from China. Generally speaking, in 2014, China mainly imported electronic & mechanical products, ore sand, copper and copper products, fruits, etc. from the Philippines, and mainly exported electronic, steel & mechanical products, mineral fuels, vehicles and relevant parts, etc. to the Philippines.

III. List of China's Agricultural Imports from the Philippines

(I) Selection Method

The trade of agricultural products plays an important role in the China-ASEAN trade, thus ASEAN suppliers need a more particular knowledge on the application of quotas, inspection and quarantine of Chinese agricultural products. In order to prepare this guide, the main agricultural products that China imports from ASEAN shall be firstly determined. Regarding the HS 4-bit code as a basis of classifying agricultural products, in accordance with the ordering of sum of agricultural products that China imported from the Philippines in 2014, the agricultural products ranking in the top 30 are selected.

(II) List of Main Agricultural Imports

The list of main agricultural products China imported from the Philippines in 2014 is formed according to UNCOMTRADE. In order to facilitate the Philippines suppliers' export of agricultural products to China, the supervision conditions of main agricultural products imported are listed in appendixes (see details in Appendix I and II).

List of China's Main Agricultural Imports from the Philippines

Number	HS Code	Article Description
1	08 03	Bananas, including plantains, fresh or dried
2	08 04	Dates, figs, pineapples, avocados, guavas, mangoes and mangosteens, fresh or dried
3	20 08	Fruit, nuts and other edible parts of plants, otherwise prepared or preserved, whether or not containing added sugar or other sweetening matter or spirit, not elsewhere specified or included
4	23 06	Oil-Cake and other solid residues, whether or not ground or in the form of pellets, resulting from the extraction of vegetable fats or oils, other than those of heading No.23 04 or 23 05
5	03 06	Crustaceans, whether in shell or not, live, fresh, chilled, frozen, dried, salted or in brine; smoked crustaceans, whether or not cooked before or during the smoking process; crustaceans, in shell, cooked by steaming or by boiling in water, whether or not chilled, frozen, dried,

		salted or in brine; flours, meals and pellets of crustaceans, fit for human consumption
6	15 13	Coconut (copra) , palm kernel or babassu oil and fractions thereof, whether or not refined, but not chemically modified
7	03 01	Live fish
8	08 01	Coconuts, Brazil nuts and cashew- nuts, fresh or dried, whether or not shelled or peeled
9	19 05	Bread, pastry, cakes, biscuits and other bakers' wares, whether or not containing cocoa; communion wafers, empty cachets of a kind suitable for pharmaceutical use, seating wafers, rice paper and similar products
10	20 06	Vegetables, fruit, nuts, fruit-peel and other parts of plants, preserved by sugar (drained, glac or crystallized)
11	12 12	Locust beans, seaweeds and other algae, sugar beet and sugar cane, fresh, chilled, frozen or dried, whether or not ground; fruit stones and kernels and other vegetable products (including unroasted chicory roots of the variety <i>Cichorium intybus sativum</i>) of a kind used primarily for human consumption, not elsewhere specified or included
12	13 02	Vegetable saps and extracts pectic substances, pectinates and pectates; agar-agar and other mucilages and thickeners, whether or not modified, derived from vegetable products
13	14 01	Vegetable materials of a kind used primarily for plaiting (for example, bamboos, rattans, reeds, rushes, osier, raffia, cleaned, bleached or dyed cereal straw, and lime bark)
14	20 09	Fruit juices (including grape must) and vegetable juices, unfermented and not containing added spirit, whether or not containing added sugar or other sweetening matter
15	15 20	Glycerol, crude glycerol waters and glycerol lyes
16	21 03	Sauces and preparations therefor; mixed condiments and mixes seasonings; mustard flour and meal and prepared mustard
17	21 06	Food preparations not elsewhere specified or included
18	22 02	Waters, including mineral waters and aerated waters, containing added sugar or other sweetening matter or flavoured, and other Non-alcoholic beverages, not including fruit or vegetable juices of heading No. 20 09

19	20 05	Other vegetables prepared or preserved otherwise than by vinegar or acetic acid, not frozen, other than products of heading No. 2006
20	05 08	Coral and similar materials, unworked or simply prepared but not otherwise worked; shells of molluscs, crustaceans or echinoderms and cuttlebone, unworked or simply prepared but not cut to shape, powder and waste thereof
21	35 05	Dextrins and other modified starches (for example, pregelatinized or esterified starches); glues based on starches, or on dextrins or other modified starches
22	03 03	Fish, frozen, excluding fish fillets and other fish meat of heading No. 03 04
23	19 04	Prepared foods obtained by the swelling or roasting of cereals or cereal products (for example, corn flakes); cereals (other than maize (corn)) in grain form or in the form of flakes or other worked grains (except flour, groats and meal) , precooked or otherwise prepared, not elsewhere specified or included
24	17 04	Sugar confectionery (including white chocolate), not containing cocoa
25	08 07	Melons (including watermelons) and papaws (papayas), fresh
26	03 07	molluscs, whether in shell or not, live, fresh, chilled, frozen, dried, salted or in brine; smoked molluscs, whether in shell or not, whether or not cooked before or during the smoking process; flours , meals and pellets of mollusks, fit for human consumption
27	03 05	Fish, dried, salted or in brine; smoked fish, whether or not cooked before or during the smoking process; flours, meals and pellets of fish, fit for human consumption
28	01 06	Other live animals
29	14 04	Vegetable products not elsewhere specified or included
30	20 01	Vegetables, fruit, nuts and other edible parts of plants, prepared or preserved by vinegar or acetic acid

(III) Situation of Import Tariff Quotas of China's Agricultural Products

Our country has implemented the import tariff quotas management system to part of agricultural products. Pursuant to the quota quantities as promised in China's schedule of concession and commitments for the trade of goods after entry into the WTO, determine the annual quantities of the agricultural products subject to the administration of import tariff quotas permitted to enter the market. The import of agricultural products within the quota quantities will apply the in-quota tax rate, and the import of agricultural products outside the quota quantities will be implemented under the relevant provisions of the *Regulations of the People's Republic of China on Import and Export Duties*. Meanwhile, matters such as the authorized agency responsible for allocating import quotas of agricultural products have also been explicitly stipulated.

1. List of agricultural products subject to the administration of import tariff quotas

In accordance with the Interim Measures for the *Administration of Import Tariff Quotas of Agricultural Products* (No. 4 Decree of the Ministry of Commerce and the State Development Planning Commission [2003]), our country implements the import tariff quotas management system to products including wheat, corn, rice, bean oil, colza oil, palm oil, sugar, cotton, wool and wool tops, etc. According to relevant commitments after China joined the WTO, the Ministry of Commerce issues the No.93 bulletin [2005] announcing that China has cancelled the import tariff quotas and import state-run trade management of bean oil, palm oil and colza oil since Jan. 1st, 2006.

At present, the categories of agricultural products subject to the administration of import tariff quotas are respectively: wheat, corn, rice, sugar, cotton, wool and wool tops.

2. The import tariff quotas management system of agricultural products

In accordance with the *Interim Measures for the Administration of Import Tariff Quotas of Agricultural Products* (No. 4 Decree of the Ministry of Commerce and the State Development Planning Commission [2003]) and the *Cancel of Import Tariff Quotas and Import state-run trade management, and Implementation of Automatic*

Import License of Bean Oil, Palm Oil and Colza Oil (No.93 Decree of the Ministry of Commerce [2005]), within the year of the Gregorian calendar, the State will, pursuant to the quota quantities as promised in China's schedule of concession and commitments for the trade of goods after entry into the WTO, determine the annual quantities of the agricultural products subject to the administration of import tariff quotas permitted to enter the market.

(1) Basic requirements

Wheat, corn, rice, bean oil, colza oil, palm oil, sugar and cotton shall be subject to state-run trade quotas or non-state-run trade quotas. Those subject to state-run trade quotas shall be imported by state-run trade enterprises; those subject to non-state-run trade quotas may be imported by enterprises with the right of trade, and may also be imported directly by the final users with the right of trade.

Wool and wool tops shall be subject to the management of designated import enterprises, which shall be carried out in accordance with the *Measures for the Administration of Designated Management of Goods Import* (No. 21 Decree of the Ministry of Foreign Trade and Economic Cooperation [2001]) promulgated by the former Ministry of Foreign Trade and Economic Cooperation.

Import tariff quotas of agricultural products shall be global quotas.

The import tariff quotas of sugar, wool and wool tops shall be subject to the distribution of the Ministry of Commerce.

The import tariff quotas of wheat, corn, rice and cotton shall be subject to the distribution of the State Development and Reform Commission (SDRC) in conjunction with the Ministry of Commerce (MOFCOM).

The *Certificates of Import Tariff Quotas of Agricultural Products* are applicable to the imports in the trade forms of general trade, processing trade, barter trade, small-scale border trade, assistance, donation and other forms.

The products entering the bonded warehouses, bonded zones and export processing zones are exempted for the *Certificates of Import Tariff Quotas of Agricultural Products*.

(2) Application of quotas

The period for applying for the import tariff quotas of agricultural goods shall be between Oct. 15th and Oct. 30th of each year (with the exception of the distribution form of drawing the quotas by coming order on the basis of contract). The MOFCOM and the SDRC will promulgate the next year's total quantity of import tariff quotas of

each agricultural goods and the specific conditions for the application therefore as well as the tariff serial numbers and applicable tax rates determined by the Customs Tariff Committee of the State Council on the *International Business Daily*, the *China Economic Herald*, the MOFCOM website (<http://www.mofcom.gov.cn>) and the SDRC website (<http://www.sdpc.gov.cn>) one month before the application period. Sugar, wool and wool tops shall be subject to the promulgation of MOFCOM; and wheat, corn, rice and cotton shall be subject to the promulgation of SDRC.

The agencies authorized by MOFCOM shall, in light of the specific conditions promulgated, accept the applications on sugar, wool, wool tops and the relevant documents submitted, and transfer the qualified applications to the MOFCOM before Nov. 30th (with the exception of the distribution form of drawing the quotas by coming order on the basis of contract), with the copies thereof sent simultaneously to the SDRC.

The agencies authorized by SDRC shall, in light of the specific conditions promulgated, accept the applications on wheat, corn, rice, cotton and the relevant documents submitted, and transfer the qualified applications to the SDRC before Nov. 30th, with the copies thereof sent simultaneously to the MOFCOM.

(3) Distribution of quotas

Import tariff quotas shall be distributed on the basis of the quantity applied for by the applicants, their previous import performance, production capacity and other relevant commercial standards or on the basis of the form of drawing by coming order. The minimum quantity of distribution shall be determined on the basis of the commercially feasible shipping quantity of each category of agricultural products.

The MOFCOM and the SDRC will, before Jan. 1st of each year, issue to the final users the *Certificates of Import Tariff Quotas of Agricultural Products* via their respectively authorized agencies, to which the “Special Seal of the MOFCOM for Certificate of Import Tariff Quotas of Agricultural Products” and the “Special Seal of the SDRC for Certificate of Import Tariff Quotas of Agricultural Products” shall be affixed.

The quotas for state-run trade shall be indicated on the *Certificate of Import Tariff Quotas of Agricultural Products*.

(4) Valid term of quotas

The annual import tariff quotas of agricultural goods shall be implemented since Jan. 1st of each year, and shall be valid within the year of the Gregorian calendar. The

Certificates of Import Tariff Quotas for Agricultural Products shall be valid from Jan. 1st to Dec. 31st of its current year. The valid term of the *Certificates of Import Tariff Quotas for Agricultural Products* subject to the distribution form of drawing by coming order on the basis of contract shall be carried out in accordance with the detailed implementation rules promulgated.

For the agricultural products subject to import tariff quotas that are shipped out from the departing port before Dec. 31st of the year and shall arrive at the destination next year, the final user shall, by presenting the *Certificate of Import Tariff Quotas of Agricultural Products* and the relevant certifications, apply for term extension to the original agency that has issued the certificate. The said agency may extend the term after having examined the case, but the term may not be extended to a time later than the end of February of the next year.

(5) Implementation of quotas

The final users shall, pursuant to the relevant provisions of the State on import of the commodities concerned, sign the import contracts by themselves or entrust others to sign the contracts.

For the import of agricultural products for processing trade that is subject to the administration of tariff quotas, the customs shall handle the record-keeping procedures for the processing trade contracts by the *Certificate of Approval for Processing Trade* submitted by the enterprises, and handle the customs clearance procedures by the *Certificate of Import Tariff Quotas of Agricultural Products* submitted where “processing trade” has been indicated under the column of “trade modes”.

Where an enterprise of processing trade fails to re-export the processed products within the prescribed term, it shall go through the writing-off procedures for processing trade contracts within 30 days after the expiration of term. The customs will implement the procedures thereabout according to the relevant provisions on processing trade.

The *Certificate of Import Tariff Quotas of Agricultural Products* will apply the system of one certificate for several batches, that is, a final user in need of importing the products in several batches may go through the customs clearance procedures for several times by the *Certificate of Import Tariff Quotas of Agricultural Products*. A final user shall faithfully fill out the “Column for Final User’s Import” under the *Certificate of Import Tariff Quotas of Agricultural Products* and take the Certificate to the original Certificate issuing agency in exchange for the certificate for the part of quotas that have not gone through the customs clearance procedures.

The excess part of bulk cargos in a batch imported shall be no more than 5% of the batch.

The agricultural products entering the bonded warehouses, bonded zones, export processing zones from outside China and to which import tariff quotas are applied shall be subject to the examination before release and to the supervision and control conducted by the customs in accordance with the relevant provisions. For the agricultural products exiting or imported from outside the bonded warehouses, bonded zones, export processing zones and to which import tariff quotas are applied, the customs will handle the import procedures by the *Certificate of Import Tariff Quotas of Agricultural Goods* in accordance with the relevant provisions on the administration of import of goods.

A final user shall, within 20 office days after finishing the customs clearance procedures for the final batch of products whose quotas are indicated in the *Certificate of Import Tariff Quotas of Agricultural Products*, hand in the original of the first pages (customs procedure pages for the consignee) of the said Certificate signed and sealed by the customs to the original Certificate issuing agency.

A final user shall, before the end of January of the next year, return the original of the unused first pages (customs procedure pages for the consignee) of the Certificate of the current year to the original Certificate issuing agency.

(6) Adjustment of quotas

Where no contract is concluded before Aug. 15th of the current year for the state-run trade quotas of agricultural products distributed to a final user, the final user may entrust a trade enterprise of any kind with the right of trade to import the products upon the approval of the MOFCOM or the SDRC in accordance with the division of administration as provided in Article 7 of the present Measures. A final user with the right of trade may also import the products directly.

Where a final user holding the Certificate of Import Tariff Quotas of Agricultural Products fails to conclude an import contract for all the quotas already drawn in the current year or fail to fulfill the contract already concluded, it shall return the unfinished quotas to the original Certificate issuing organ before Sep. 15th.

The term for applying for the tariff quotas to be redistributed for the import of agricultural products shall be from Sep. 1st to Sep. 15th of each year (with the exception of the distribution form of drawing by coming order on the basis of contracts). The MOFCOM and the SDRC will respectively promulgate the specific conditions for

applying for the tariff quotas to be redistributed on the *International Business Daily*, the *China Economic Herald*, the MOFCOM website (<http://www.mofcom.gov.cn>) and the SDRC website (<http://www.sdpc.gov.cn>) one month before the application period. The applications shall be submitted to the MOFCOM or the SDRC via their respectively authorized agencies.

Sugar, wool and wool tops shall be subject to the promulgation of MOFCOM, and wheat, corn, rice and cotton shall be subject to the promulgation of SDRC.

A final user that has finished the import tariff quotas distributed of agricultural products before the end of October and has returned the originals of the first pages (customs procedure pages for the consignee) of the *Certificate of Import Tariff Quotas of Agricultural Products* may apply for the tariff quotas to be redistributed.

Before September, 30 of each year, the MOFCOM shall distribute the tariff quotas to be redistributed of bean oil, colza oil, palm oil, sugar, wool and wool tops to the final users (with the exception of the distribution form of drawing by coming order on the basis of contracts), and the SDRC shall distribute the tariff quotas to be redistributed of wheat corn, rice and cotton to the final users.

The tariff quotas to be redistributed shall, in light of the applying conditions promulgated, be distributed according to the form of drawing by coming order. The minimum quantity of distribution shall be determined on the basis of the commercially feasible shipping quantity of each category of agricultural products.

A final user who has obtained the redistributed quotas may entrust a trade enterprise of any kind with the right of trade to import the products. A final user with the right of trade may also import the products directly.

(IV) Distribution of Import Tariff Quotas of Agricultural Products in 2015

1. Distribution of import tariff quotas of grains

The promulgation of quota quantities, application conditions and distribution principles of import tariff quotas of grains in 2015 is subject to the No.22 bulletin of 2014 issued by the SDRC of PRC. On Jan. 5th, 2015, the SDRC promulgated the information of enterprises applying for import tariff quotas of grains in 2015.

(1) Quota quantities

The import tariff quota quantities of grains in 2015 are: 9.636 million tons of wheat, accounting for 10% of non-state-run trade; 7.2 million tons of corn, accounting for 40% of non-state-run trade; 5.32 million tons of rice (including: 2.66 million tons of long-grain rice, and 2.66 million tons of medium and short-grain rice), accounting for 50% of non-state-run trade.

(2) Application conditions

The basic conditions of applicants for import tariff quotas of grains in 2015 are: have registered in the Administration for Industry and Commerce prior to Oct. 1st, 2014; be with good financial condition, tax records and integrity status; strictly implement the statistical system of grain circulation, and be subject to the provisions of minimum and maximum stock quantities for grain operators; during the period of 2012-2014, be with no violation records in the aspects such as customs, industry & commerce, tax affairs, foreign exchange, inspection & quarantine, grain circulation and environmental protection, no credit record of non-performing loan, and no actions violating the *Interim Measures for the Administration of Import Tariff Quotas of Agricultural Products*.

On the premise of such conditions above, applicants for import tariff quota of wheat must also meet one of the following conditions:

State-run trade enterprises;

Enterprises with actual import performance (excluding agent import) in 2014;

Flour manufacturing enterprises with wheat consumption more than 100,000 tons in 2013 or 2014;

Food manufacturing enterprises with flour consumption more than 50,000 tons in 2013 or 2014;

Enterprises engaged in the processing trade and using wheat or flour as the raw material, without actual import performance in 2014 but with the import-export operation right and the certificate of production capacity on processing trade provided by local commerce authorities.

Applicants for import tariff quota of corn and wheat must also meet one of the following conditions:

State-run trade enterprises;

Enterprises with actual import performance (excluding agent import) in 2014;

Feed manufacturing enterprises with corn consumption more than 50,000 tons in

2013 or 2014;

Other manufacturing enterprises with corn consumption more than 150,000 tons in 2013 or 2014;

Enterprises engaged in the processing trade and using corn as the raw material, without actual import performance in 2014 but with the import-export operation right and the certificate of production capacity on processing trade provided by local commerce authorities.

Applicants for import tariff quota of rice (the long-grain rice and the medium and short-grain rice need respective application) must also meet one of the following conditions:

State-run trade enterprises;

Enterprises with actual import performance (excluding agent import) in 2014;

Grain enterprises with the qualification of grain wholesale and retail, reaching the amount of rice sales more than RMB 100 million in 2013 or 2014;

Food manufacturing enterprises with rice consumption more than 50,000 tons in 2013 or 2014;

Enterprises engaged in the processing trade and using rice as the raw material, without actual import performance in 2014 but with the import-export operation right and the certificate of production capacity on processing trade provided by local commerce authorities.

The group enterprises with multiple processing plants must separately apply for and use the import quotas in the name of each independent processing plant. The trading enterprises applying for the import tariff quota of rice can choose to submit the application in the name of group headquarters or subordinate enterprises, but the group headquarters and subordinate enterprises shall not submit the application in the meantime.

(3) Quota usage

The above import tariff quotas of grains must be used by applicants themselves, and the imported goods shall be processed and operated by the enterprises, among which the imported wheat and corn shall be processed for use by the plants; and the imported rice shall be organized for sales in the name of the enterprises.

2. Distribution of import tariff quota of cotton

The promulgation of quantity, application conditions and distribution principles of

import tariff quota of cotton in 2015 is subject to the No.22 bulletin of 2014 issued by the SDRC of PRC.

(1) Quota quantities

The import tariff quota quantity of cotton in 2015 is 894,000 tons, among which the state-run trade accounts for 33%.

(2) Application conditions

The basic conditions of applicants for import tariff quota of cotton in 2015 are: have registered in the Administration for Industry and Commerce prior to Oct. 1st, 2014; be with good financial condition, tax records and integrity status; during the period of 2012-2014, be with no violation records in the aspects such as customs, industry & commerce, tax affairs, foreign exchange, inspection & quarantine and environmental protection, and with no credit record of non-performing loan; have performed social responsibilities related to business; Without actions violating the *Interim Measures for the Administration of Import Tariff Quotas of Agricultural Products*.

On the premise of such conditions above, applicants for import tariff quota of cotton must also meet one of the following conditions:

State-run trade enterprises;

Enterprises with actual import performance (excluding agent import) in 2014;

Cotton-spinning enterprises with spinning equipment more than 50,000 spindles.

3. Distribution of import tariff quota of sugar

The preparation of the quantity and application conditions of import tariff quota of sugar in 2015 is subject to the *Detailed Rules and Regulations on Application and Distribution of Import Tariff Quota of Sugar in 2015* (No.66 Decree of the MOFCOM [2014]).

(1) Total quantity of tariff quota

The total quantity of import tariff quota of sugar in 2015 is 1.945 million tons, among which the state-run trade accounts for 70%.

(2) Types of applicant enterprises

State-run trade enterprises;

Central enterprises with the function of state reserve;

Enterprises with actual import performance holding the tariff quota of sugar in 2014 (hereinafter referred to as applicants with actual performance);

Sugar enterprises with daily processing capacity more than (equal to) 600 tons, registered capital more than (equal to) RMB 10 million, and annual sales of sugar more than (equal to) RMB 450 million;

Enterprises engaged in the processing trade, using sugar as the raw material.

(3) Basic conditions of applicants

Have registered in the Administration for Industry and Commerce prior to Oct. 1st, 2014, and conducted the publicity of annual reports;

During the period of 2012-2014, be with no violation records in the aspects of customs, foreign exchange, industry & commerce, tax affairs, quality inspection, social security, environmental protection, self-discipline, etc.;

Without actions violating the *Interim Measures for the Administration of Import Tariff Quotas of Agricultural Products* and the *Detailed Rules and Regulations on Application and Distribution of Import Tariff Quota of Sugar in 2014*.

(4) Application materials

Application report for import tariff quotas of agricultural products;

Application form for import tariff quotas of agricultural products;

Copy of business license for enterprise as a legal person (duplicate);

Copies of the 2014 *Certificates of Import Tariff Quotas of Agricultural Products* of sugar and the customs declaration for importation endorsed and signed by customs;

The tax clearance certificate of 2013 proofing the enterprise has paid tax by law.

The applicants with actual performance shall provide the first four items of materials above; the applicants without actual performance shall provide the first, second, third and fifth items of materials. If an applicant without actual performance was constructed and put into operation after 2009, it shall also provide the competent department with an approval document of feasibility study report of the construction project (or an approval document of project proposals) and the completion acceptance report.

(5) Distribution of quota

If the total quantity of import tariff quota can satisfy applications of qualified applicants, the distribution of quota shall be accordant with the application quantities of applicants;

If the total quantity of import tariff quota cannot satisfy applications of qualified applicants, applicants with actual performance can get the preferential quota, and the distribution of quota shall be accordant with actual import performance, production

capacity and sales of applicants in the last year, as well as other relevant commercial standards.

IV. List of China's Non-Agricultural Imports from the Philippines

(I) Selection Method

The non-agricultural products, such as industrial products, account for the major share of China-ASEAN trade. With the further promotion of China-ASEAN free trade area, the tariff level of products like industrial products has been significantly reduced, with relatively high degree of trade & investment liberalization and facilitation. In accordance with the ordering of sum of non-agricultural products that China imported from the Philippines in 2014, regarding the HS 2-bit code as a basis of classification, the non-agricultural products ranking at the top are selected in the first 10 Chapters; then regarding the HS 4-bit code as a basis of classification, the non-agricultural products ranking in the top 3 of the first 10 Chapters above are selected respectively.

(II) List of Main Non-Agricultural Imports

The list of main non-agricultural products China imported from the Philippines in 2014 is formed according to UNCOMTRADE after the top 30 kinds of products are selected on the classification bases of HS 2-bit and HS 4-bit codes. In order to facilitate The Philippines suppliers' export of relevant products to China, the supervision conditions of main non-agricultural products imported are listed in appendixes (see details in Appendix I and III).

List of China's Main Non-agricultural Imports from the Philippines

Number	HS Code	Article Description
1	85. 42	Electronic integrated circuits
2	85. 41	Diodes, transistors and similar semi-conductor devices; photosensitive semi-conductor devices, including photovoltaic cells whether or not assembled in modules or made up into panels; light emitting diodes; mounted piezo-electric crystals
3	85. 17	Telephone sets, including telephones for cellular networks or for other wireless networks; other apparatus for the transmission or reception of voice, images or other data, including apparatus for communication in a wired or wireless network(such as a local or wide area network), other than transmission or reception apparatus

		of heading 84. 43, 85.25, 85. 27 or 85. 28
4	84. 73	Parts and accessories (other than covers, carrying cases and the like) suitable for use solely or principally with machines of headings No. 84. 69 to 84. 72
5	84. 71	Automatic data processing machines and units thereof; magnetic or optical readers, machines for transcribing data onto data media in coded form and machines for processing such data, not elsewhere specified or included
6	84. 43	Printing machinery used for printing, cylinders and other printing components of heading 84.42; other printers Copying machines and facsimile machines , whether or not combined, Part and accessories thereof
7	26 04	Nickel ores and concentrates
8	26 03	Copper ores and concentrates
9	26 01	Iron ores and concentrates, including roasted iron pyrites
10	74 03	Refined copper and copper alloys , unwrought
11	74 04	Copper waste and scrap
12	74 10	Copper foil (whether or not printed or backed with paper , paperboard , plastics or similar backing materials) of a thickness (excluding any backing) not exceeding 0.15mm
13	27 02	Lignite , whether or not agglomerated, excluding jet
14	27 07	Oils and other products of the distillation of high temperature coal tar; similar products in which the weight of the aromatic constituents exceeds that of the Non-aromatic constituents
15	27 01	Coal; briquettes, ovoids and similar solid fuels manufactured from coal
16	90. 02	Lenses, prisms, mirrors and other optical elements, of any material, mounted, being parts of or fittings for instruments or apparatus, other than such elements of glass not optically worked
17	90. 31	Measuring or checking instruments, appliances and machines, not specified or included elsewhere in this Chapter; profile projectors
18	90. 01	Optical fibres and optical fibre bundles; optical fibre cables, other than those of heading N0. 85. 44; sheets and plates of polarizing material; lenses (including contact lenses) , prisms, mirrors and other optical elements , of any material, unmounted, other than such elements of glass not optically worked
19	39 15	Waste, parings and scrap , of plastics
20	39 07	Polyacetals, other polyethers and epoxide resins, in primary forms; polycarbonates, alkyd resins, polyallyl esters and other polyesters, in primary forms
21	39 01	Polymers of ethylene , in primary forms
22	44 07	Wood sawn or chipped lengthwise, sliced or peeled , whether or not planed, sanded or finger-jointed, of a thickness exceeding 6 mm
23	44 02	Wood charcoal (including shell or nut charcoal) , whether or not

		agglomerated
24	44 03	Wood in the rough, whether or not stripped of bark or sapwood, or roughly squared
25	29 01	Acyclic hydrocarbons
26	29 05	Acyclic alcohols and their halogenated, sulphonated, nitrated or nitrosated derivatives
27	29 02	Cyclic hydrocarbons

V. Process Management of China's Imports from The Philippines

According to relevant laws and regulations of the State Administration for Quality Supervision and Inspection and Quarantine (AQSIQ) and the General Administration of Customs, the products that China imports from The Philippines shall be subject to inspection and quarantine, and these imported goods can enter into the domestic market only after passing the supervision of customs.

(I) Inspection & Quarantine

During the entry inspection declaration, the inspection form for entry goods shall be filled in, and relevant documents such as the contracts, invoices and bills of lading shall be provided according to the *Provisions of Entry-Exit Inspection and Quarantine Declaration*. In addition, relevant documents shall be provided according to requirements in case of the following conditions.

1. Relevant certificates shall be provided for goods subject to safety quality licensing and sanitary registration, or required to be approved and reviewed.

2. For goods requiring quality inspection, foreign quality certificates or quality guarantees, product use instructions as well as relevant standards and technical data shall be provided; for goods delivered with samples, the reference samples must be attached; for goods settled accounts per grade or conditioned weight, an application of weight survey shall be submitted in the meantime.

3. During the entry inspection declaration for waste, the *Approval Certificate for Imported Waste* signed and issued by national environmental protection departments, the certificate for pre-shipment inspection signed and issued by authorized inspection agencies, etc. shall be provided.

4. For goods applying for damage survey, relevant documents which can prove the situation of damage, such as the damage report of tallying, business records of railways, air traffic accident reports or marine accident reports, shall also be provided.

5. For goods applying for weight (quantity) survey, the detailed list of weight, the list of tallying, etc. shall be also provided.

6. For goods through acceptance of receiving and using departments or tested by other units, the acceptance report or test results, the detailed list of weight, etc. shall be attached with the goods.

7. International travelers entering in the country shall fill in the quarantine declaration form on entry.

8. For animals and plants as well as corresponding products entering in the country, the trade contracts, invoices and certificates of origins shall be provided, and meanwhile, the official quarantine certificate of exporting countries or regions also must be provided; For those required to transact the approval procedures of entry quarantine, the entry quarantine permits for animals and plants shall also be provided.

9. During the inspection declaration of transited animals and plants as well as corresponding products, waybills and quarantine certificates officially provided by the exporting countries or regions shall be held; when transiting animals, transit permits for animals and plants signed and issued by the State Administration of Inspection and Quarantine shall also be submitted.

10. During the entry inspection declaration for transportation and containers, quarantine certificates shall be provided, and health conditions of relevant personnel shall be declared.

11. Entry passengers and traffic personnel carrying companion animals shall provide the quarantine certificate for entry animals and the vaccination certificate.

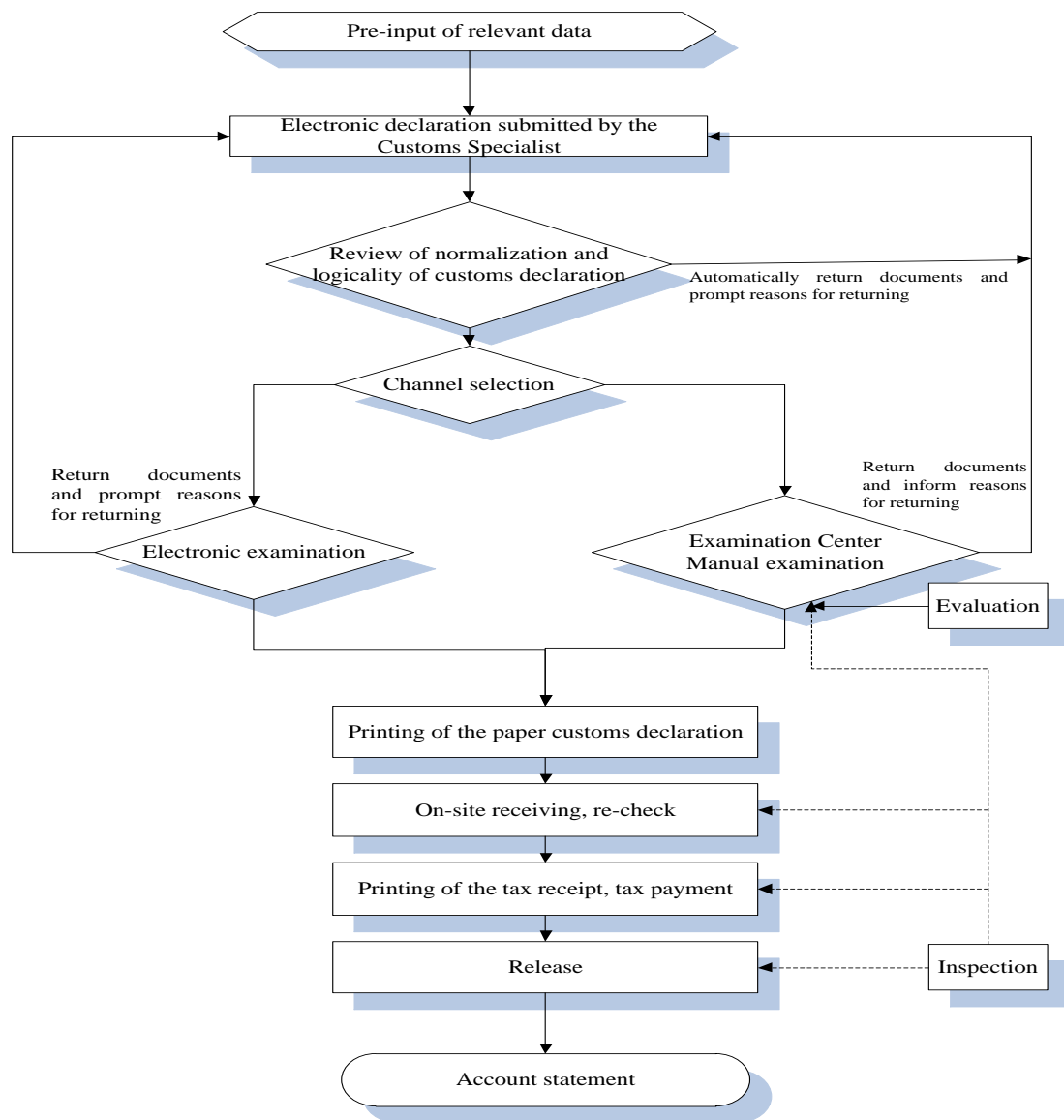
12. For articles banned from entry but need entry due to special requirements such as scientific research, the certificate of special permission signed and issued by the State Administration of Inspection and Quarantine must be provided.

13. For the entry of special articles, relevant approval documents or specified documents shall be provided.

(II) Customs Clearance

The procedure of customs clearance for China's imported products is composed of

five basic links, including declaration, inspection, taxation, release and clearance. Declaration refers to the behaviors that a consignee or his agent of imported goods submits the verification certificate to customs and applies for the transaction of customs affairs. Inspection refers to the checks conducted by customs according to laws to the imported goods declared by the declarant, so as to confirm the conformity of documents, certificates and goods, check if there is any violation of laws and if the entry is legal, and prepare conditions for the next customs clearance procedure. Taxation means that customs charge the tariff for imported goods and the taxes for imported links according to relevant national policies, laws and regulations, including tariff classification, application of the tariff rate and import linkage tax rate, approval and determination of the duty-paying value, calculation and payment of taxes. Release is the last link of on-site operations of port customs supervision. Clearance means that customs implement inspections on the goods requiring follow-up management after the port release within a specified period, and deal with the goods requiring supplementary certificates and payment for overdue taxes till all of customs supervision procedures are fully completed. The flow chart of China's product import is as follow:



For the customs clearance of agricultural products subject to import quotas management, the *Certificates of Import Tariff Quotas of Agricultural Products* shall be submitted according to relevant provisions of the *Interim Measures for the Administration of Import Tariff Quotas of Agricultural Products* (No. 4 Decree of the Ministry of Commerce and the State Development Planning Commission [2003]).

(III) Cooperation between customs and inspection & quarantine departments

According to the *Notification on the Comprehensive Promotion of Cooperation between Customs and Inspection & Quarantine Departments Issued by the General*

Administration of Customs and the State Administration for Quality Supervision and Inspection and Quarantine (No.161 Decree of the General Administration of Customs and AQSIQ [2014]), since Aug. 1st, 2014, the “3 Ones” of cooperation between customs and inspection & quarantine departments has been comprehensively promoted to all directly competent customs and inspection & quarantine departments, all sites of customs clearance, and all goods and articles requiring customs declaration and inspection declaration pursuant to the laws, so as to achieve the maximum utilization of facilitation measures provided by customs and inspection & quarantine departments to benefit enterprises.

The “3 Ones” of cooperation between customs and inspection & quarantine departments refers to the “one-off declaration, one-off inspection and one-off release”. The “one-off declaration” refers to “one-off input and respective declarations”, which means that an enterprise only needs to input data for once, and the data will be respectively sent to customs and inspection & quarantine departments; the “one-off inspection” refers to “one-off unpacking that customs and inspection & quarantine departments jointly implement check/inspection & quarantine pursuant to the laws”, which means that both parties of customs and inspection & quarantine departments can jointly implement check/inspection & quarantine to the same batch of goods as required according to their different responsibilities and pursuant to the laws; the “one-off release” refers to “networking check and release of customs and inspection & quarantine departments”, which means that customs and inspection & quarantine departments respectively send the check and release information for goods arriving at ports, and the enterprise can transact procedures for taking delivery of goods by the check and release information of customs and inspection & quarantine departments.

Appendix I

List of Supervision Requirements of Customs

License or Official Document Codes	License or Official Document Names
1	Import Licence of the People's Republic of China
2	Import License for Dual-use Items and Technologies
3	Export License for Dual-use Items and Technologies
4	Export Licence of the People's Republic of China
5	Temporary Textiles Export Licence of the People's Republic of China
6	Prohibited Import of Used Mechanical and Electric Products
7	Automatic Import License of the People's Republic of China
8	Export Forbidden Items
9	Import Forbidden Items
A	Certificate of Inspection for Goods Inward
B	Certificate of Inspection for Goods Outward
D	Certificate of Inspection for Goods Inward(Used for Rough Diamonds)
E	Export Permit for Endangered Wild Animals
F	Import Permit for Endangered Wild Animals
G	Export License for Dual-use Items and Technologies(Directionality)
I	Psychotropic Drug Import and Export License
J	The export license or the people's Bank of China import approval of gold products
O	Automatic Import License (Used and New Mechanical and Electrical Products)
P	Certificate of Approval for Import of Wastes
Q	Drug Import Customs Clearance
S	Certificate for the Import and Export of Pesticides
T	License of Transporting Cash in Foreign Currency Inward and Outward
W	Import Authorization for Narcotic Drugs
X	Clearance Notification for Environmental Management on Import/Export of Toxic Chemicals
Z	Certificate of of Approval for the Import of Audio and Video Products or Claimed Programs
e	Certificate of Cotton Import Tariff Quota at Out-Quota Preferential Duty Rate
s	Certificate of the Use Identification of Goods under ITA Tax
t	Import Tariff Quota Certificate
v	Automatic Import License of the People's Republic of China (Processing Trade)
x	Export Licence of the People's Republic of China (Processing Trade)
y	Export Licence of the People's Republic of China (Small Amount of Border Trade)

Appendix II

Supervision Requirements of Customs of Main Agricultural Imports

HS Code	Code	Article Description
08 03		Bananas, including plantains, fresh or dried
0803 1000	AB	-Plantains
0803 9000	AB	-Other
08 04		Dates, figs, pineapples, avocados, guavas, mangoes and mangosteens , fresh or dried
0804 1000	AB	-Dates
0804 2000	AB	-Figs
0804 3000		-Pineapples
0804 3000 01	AB	Pineapples, fresh
0804 3000 90	AB	Pineapples, dried
0804 4000	AB	-Avocados
		-Guavas, ruangoes and mangosteens
0804 5010		---Guavas
0804 5010 01	AB	Cuavas, fresh
0804 5010 90	AB	Guavas, dried
0804 5020		-Mangoes
0804 5020 01	AB	Mangoes, fresh
0804 5020 90	AB	Mangoes, dried
0804 5030	AB	-mangosteens
20 08		Fruit, nuts and other edible parts of plants, otherwise prepared or preserved, whether or not containing added sugar or other sweetening matter or spirit, not elsewhere specified or included
2008 1110	AB	---Ground-nuts kernels , in airtight containers
2008 1120	AB	-Roasted ground-nuts
2008 1130	AB	---Ground-nut butter
2008 1190	AB	-Other
		-Other , including Mixtures
2008 1910	AB	-Walnut meats, in airtight containers
2008 1920	AB	-Other nuts, in airtight containers
		-Other
2008 1991	AB	----chestnut Seed
2008 1992	AB	-Sesame
2008 1999		-Other

2008 1999 10	ABE	Korean pine-nuts, shelled, (not prepared or preserved by vinegar or acetic acid)
2008 1999 90	AB	Nuts and other seeds, (not prepared or preserved by vinegar or acetic acid) not elsewhere specified or included -Pineapples
2008 2010	AB	---in airtight containers
2008 2090	AB	-Other
		-Citrus fruit
2008 3010	AB	---In airtight containers
2008 3090	AB	-Other
		-Pears
2008 4010	AB	---In airtight containers
2008 4090	AB	-Other
2008 5000	AB	-Apricots
		-Cherries
2008 6010	AB	---In airtight containers
2008 6090	AB	-Other
		-Peaches
2008 7010	AB	---In airtight containers
2008 7090	AB	-Other
2008 8000	AB	-Strawberries
		-Other including mixtures Other than those of subheading No. 2008 19
2008 9100	AB	-Palm hearts
2008 9300	AB	--Cranberry (Vaccinium macrocarpon vaccinium oxycoccos, vaccinium vitis-idaea)
2008 9700	AB	-Mixtures
		-Other
2008 9910	AB	-Lychee can
2008 9920	AB	---Longan can
		-Preparations of Seaweeds and Other alga
2008 9931	AB	-Seasoned Laver
2008 9932	AB	-salted , sea tangle
2008 9933	AB	-Pinnatifida salted
2008 9939	AB	-Other
2008 9940	AB	-Water chestnut in airtight containers
2008 9990	AB	-Other
23 06		Oil-Cake and other solid residues, whether or not ground or in the form of pellets, resulting from the extraction of vegetable fats or oils , other than those of heading No. 23 04 or 23 05

2306 1000	AB	-of Cotton Seeds
2306 2000	AB	-of Linseed
2306 3000	AB	-of sunflower Seeds
		-of rape or colza Seeds
2306 4100	AB	-of Low erucic acid rape or colza Seeds
2306 4900	AB	-Other
2306 5000	AB	-of Coconut or copra
2306 6000		-of Palm nuts or kernels
2306 6000 10	ABEF	Endangered oil-cake and Other solid residues of palm nuts or derneln (other than those of heading No. 23 04 or 23 05)
2306 6000 90	AB	Other oil-cake and other solid residues of palm nuts or demeln (other than those of heading No. 23 04 or 23 05)
2306 9000	AB	-Other
03 06		Crustaceans , whether in shell or not , live , fresh ,chilled, frozen, dried, salted or in brine smoked crustaceans , whether or not cooked before or during the smoking process crustaceans, in shell, cooked by steaming or by boiling in water, whether or not chilled , frozen , dried , salted or in brine flours, meals and pellets of crustaceans, fit for human consumption Frozen:
0306 1100	AB	- Reef shrimp and shrimp (Palinurus、 lobster genus、 Rock lobster genus)
0306 1200	AB	-Ao lobster(Ao lobster genus)
		--crabs
0306 1410	AB	-Swimming crab
0306 1490	AB	-Other
0306 1500	AB	-Norway Lobsters (Nehrops Norvegicus)
		--Cold-water shrimp and prawns (pandalus, spp.,Crangon crangon)
		---Cold-water shrimp
0306 1611	AB	-Shelled
0306 1612	AB	-Other , pandaius borealis
0306 1619	AB	-Other
		---Cold-water prawns
0306 1621	AB	-Shelled
0306 1629	AB	-Other
		-Other shrimps and prawns
		-shrimps
0306 1711	AB	-Shelled

0306 1719	AB	-Other
		-prawns
0306 1721	AB	-Shelled
0306 1729	AB	-Other
		-Other including flours, meals and pellets of crustaceans, fit for human consumption
		-Freshwater crawfish
0306 1911	AB	-Shelled
0306 1919	AB	-Other
0306 1990	AB	-Other
		-not Frozen
		-Reef shrimp and shrimp (Palinurus, Lobster genus, Rock lobster, genus)
0306 2110	AB	-for cultivation
0306 2190	AB	-Other
		-Ao lobster(Ao lobster genus)
0306 2210	AB	-for cultivation
0306 2290	AB	-Other
		--Crabs
0306 2410	AB	-for cultivation
		-Other
0306 2491	AB	-Freshwater crabs live
0306 2492	AB	-Swimming crab
0306 2499	AB	-Other
		-Norway Lobsters (Nephrops norvegicus)
0306 2510	AB	-for cultivation
0306 2590	AB	-Other
		--Cold-water shrimp and prawns (pandalus spp., Crangon crangon)
0306 2610	AB	-for cultivation
0306 2620	AB	-prawns , Fresh or chilled
0306 2690		-Other
0306 2690 01	AB	Cold-water shrimp , fresh or chilled
0306 2690 90	AB	Cold-water prawns and shrimp, whether in shell or not, live, dried, salted or in brine (including smoked, whether in shell or not, whether or not cooked before or during the smoking process in shell, cooked by steaming or by boiling in water)
		-Other shrimps and prawns
0306 2710	AB	-for cultivation
0306 2720	AB	-prawns , Fresh or chilled
0306 2790		-Other
0306 2790 01	AB	Other shrimp , fresh or chilled

0306 2790 90	AB	Other prawns and shrimp, whether in shell or not ,live, dried ,salted or in brine(including smoked ,whether or not cooked before or during the smoking process in shell, cooked by steaming or by boiling in water)
		-Other including flours, meals and pellets of crustaceans, fit for human consumption
0306 2910	AB	-for cultivation
0306 2990	AB	-Other
15 13		Coconut (copra) , palm kernel or babassu oil and fractions thereof, whether or not refined, but not chemically modified
		-Coconut (copra) oil and its fractions
1513 1100	AB	--Crude oil
1513 1900	AB	-Other
		-Palm kernel or babassu oil and fractions thereof:
1513 2100	AB	--Crude oil
1513 2900	AB	-Other
03 01		Live fish
		-Ornamental fish
0301 1100		-Freshwater fish
0301 1100 10	BEF	Ornamental endangered freshwater fish
0301 1100 90	AB	Ornamental other freshwater fish
0301 1900		-Other
0301 1900 10	BFE	Ornamental endangered not freshwater fish
0301 1900 90	AB	Ornamental other not freshwater fish
		-Other live fish
		Trout (<i>Salmo trutta</i> , <i>Oncorhynchus mykiss</i> , <i>Oncorhynchus clarki</i> , <i>Oncorhynchus aguabonita</i> , <i>Oncorhynchus gilae</i> , <i>Oncorhynchus apache</i> and <i>Oncorhynchus chrysogaster</i>)
0301 9110	AB	-Fry
0301 9190	AB	-Other
		-Eels (<i>Anguilla</i> spp.)
0301 9210		-Fry
0301 9210 10	ABE	Fry of marbled eels (<i>Anguilla marmorata</i>)
0301 9210 20	ABEF	Fry European eels
0301 9210 90	AB	Other fry of eels (<i>Anguilla marmorata</i>)
0301 9290		-Other
0301 9290 10	ABE	Marbled eels (<i>Anguilla marmorata</i>)
0301 9290 20	ABEF	European eels
0301 9290 90	AB	Other live eels (<i>Anguilla marmorata</i>)

		--Cyprinus carpio , Carassius Carassius , Ctenopharyngodon icellus, Hypophthalmichthys spp. , Cirrhinus spp. , Mylopharyngodon piceus
0301 9310	AB	-Fry
0301 9390	AB	-Other
		-Atlantic and pacific bluefin tunas (Thunnus thynnus , Thunnus orientalis)
0301 9410	AB	-Fry
		-Other
0301 9491	AB	-Atlantic bluefin tunas
0301 9492	AB	-Pacific bluefin tunas
		-Southern bluefin tunas (thunnus maccoyii)
0301 9510	AB	-Fry
0301 9590	AB	-Other
		-Other
		-Fry
0301 9911	AB	-of perches
0301 9912	ABFE	-of sturgeon
0301 9919		-Other
0301 9919 10	ABFE	Other endangered fry
0301 9919 90	AB	Other fry
		-Other
0301 9991	AB	-Tilapia
0301 9992	AB	-Puffer fish
0301 9993		-Other cyprinidae fish
0301 9993 10	ABFE	Other endangered live carp
0301 9993 90	AB	Other live carp(Cyprinus carpio,Carassius carassius, Ctenopharyngodon idellus, Hypophthalmichthys spp., Cirrhinus spp. , Mylopharyngodon piceus)
0301 9999		-Other
0301 9999 10	ABFE	Other endangered live fish
0301 9999 90	AB	Other live fish
08 01		Coconuts, Brazil nuts and cashew- nuts, fresh or dried, whether or not shelled or peeled
		-Coconuts
0801 1100	AB	-Desiccated
0801 1200	AB	-in the inner shell(endocarp)
		-Other
0801 1910	AB	-Seedlings
0801 1990	AB	-Other
		-Brazil nuts
0801 2100	AB	--in shell
0801 2200	AB	-Shelled

		-Cashew nuts
0801 3100	AB	--in shell
0801 3200	AB	-Shelled
19 05		Bread , pastry, cakes, biscuits and other bakers' wares, whether or not containing cocoa communion wafers , empty cachets of a kind suitable for pharmaceutical use, seating wafers, rice paper and similar products
1905 1000	AB	-Crispbread
1905 2000	AB	-Gingerbread and the like
		-Sweet biscuits; waffles and wafers
1905 3100	AB	-Sweet biscuits
1905 3200	AB	-Waffles and wafers
1905 4000	AB	-Rusks, toasted bread and similar toasted products
1905 9000	AB	-Other
20 06		Vegetables, fruit, nuts, fruit-peel and other parts of plants, preserved by sugar (drained, glac or crystallized)
2006 0010	AB	-Preserved jujubes
2006 0020	AB	-Preserved Olives
2006 0090		-Other
2006 0090 10	ABE	Matsutske , preserved by sugar
2006 0090 90	AB	Other vegetables, fruit, nuts, fruit-peel (including other parts of plants) preserved by sugar
12 12		Locust beans, seaweeds and other algae, sugar beet and sugar cane, fresh, chilled, frozen or dried, whether or not ground fruit stones and kernels and other vegetable products (including unroasted chicory roots of the variety Cichorium intybus sativum) of a kind used primarily for human consumption, not elsewhere specified or included
		-Seaweeds and Other algae
		-Fit for human consumption
1212 2110	AB	-sea tangle
1212 2120	8A	-Black moss
		-Pinnatifida
1212 2131	AB	-dried
1212 2132	AB	-Fresh
1212 2139	AB	-Other
		-Laver
1212 2141	AB	- Dried
1212 2142	AB	-Fresh

1212 2149	AB	-Other
		-Eucheuma
1212 2161	AB	- Dried
1212 2169	AB	-Other
		----Garcilaria
1212 2171	AB	-Dried
1212 2179	AB	-Other
1212 2190	AB	-Other
1212 2900~	AB	-Other
		-Other
1212 9100	AB	-sugar beet
1212 9200	AB	--Locust beans
1212 9300	AB	-sugar cane
1212 9400	AB	--Chicory roots
		-Other
		-Apricot, peach (including nectarine) or plum stones and kernels
1212 9911	QAB	-Bitter Apricot kernels
1212 9912	AB	----Sweet Apricot kernels
1212 9919	AB	-Other
		-Other
1212 9993	AB	-Pumpkin Seeds
1212 9994	AB	-Lotus Seeds (semen Nelumbinis)
1212 9996	ABEF	----leaf of steviol
1212 9999		-Other
1212 9999 10	ABFE	Other endangered vegetable products (including unroasted chicory roots of the variety <i>Cichorium intybus sativum</i>) of a kind used primarily for human consumption
1212 9999 90	AB	Other fruit stones and kernels and vegetable products (including unroasted chicory roots of the variety <i>Cichorium intybus sativum</i>) of a kind used primarily for human consumption
13 02		Vegetable saps and extracts; pectic substances, pectinates and pectates; agar-agar and other mucilages and thickeners, whether or not modified, derived from vegetable products
		-Vegetable saps and extracts
1302 1100	WB9	-Opium
1302 1200	4xABy	-of Liquorice
1302 1300	AB	-of hops
		-Other
1302 1910	AB	---Crucie lacquer

1302 1920	ABS	-Azadirachtin
1302 1930	ABS	-of pyrethrum or of the roots of plants containing rotenone
1302 1940	ABE	----Cingko
1302 1990		-Other
1302 199001	ABS	Matrine
1302 1990 11	23AB	Chinese ephedra extract powder used primarily in pesticide
1302 1990 12	23AB	Chinese ephedra extract used primarily in pesticide
1302 1990 13	ABFE	Endangered vegetable saps and extracts for used primarily in pesticide
1302 1990 19	AB	Other vegetable saps and extracts used primarily in pharmacy
1302 1990 91	Q23AB	Chinese ephedra extract powder used primarily in pharmacy
1302 1990 92	Q23AB	Chinese ephedra extract used in pharmacy
1302 1990 93	23AB	Other chinese ephedra extract powder
1302 1990 94	23AB	Other chinese ephedra extract
1302 1990 95	ABFE	Saps and extracts of taxusl
1302 1990 96	ABFE	Saps and extracts of herba dendroii
1302 1990 97	ABFE	Saps and extracts of other endangered vegetable
1302 1990 99	AB	Other vegetable saps and extracts
1302 2000	AB	-Pectic substances, pectinates and pectates
		-Mucilages and thickeners, whether or not modified, derived from vegetable products
1302 3100	AB	-Agar-Agar
1302 3200	AB	-Mucilages and thickeners, whether or not modified, derived from locust beans , locust bean seeds or guar seeds
		-Other
		-Preparations of seaweeds and other algae
1302 3911	AB	----Carrageenan
1302 3912	AB	-Algin
1302 3919	AB	-Other
1302 3990		-Other
1302 3990 10	ABFE	Mucilages and thickeners, derived from endangered vegetable products, not elsewhere specified or included
1302 3990 90	AB	Other mucilages and thickeners, derived from vegetable products, not elsewhere specified or included
14 01		Vegetable materials of a kind used primarily for plaiting (for example, bamboos, rattans, reeds, rushes, osier, raffia, cleaned, bleached or dyed cereal straw, and lime bark)
1401 1000		-Bamboos

1401 1000 10	ABE	Acidosasa chinensis (Raphia vinifera)
1401 1000 90	AB	Other bamboos
1401 2000		-Rattans
1401 2000 10	ABFE	Endangered rattans
1401 2000 90	AB	Other rattans
		-Other
1401 9010	AB	---Cereal straw (Other than wheat straw)
1401 9020	AB	-Reeds
		-Rushes
1401 9031	AB4xy	-mat rush
1401 9039	AB	-Other
1401 9090	AB	-Other
20 09		Fruit juices (including grape must) and vegetable juices, unfermented and not containing added spirit, whether or not containing added sugar or other sweetening matter
		-Orange juice
2009 1100	AB	-Frozen
2009 1200	AB	-not frozen of a Brix value not exceeding 20
2009 1900	AB	-Other
		-Grapefruit (including pomelo) juice
2009 2100	AB	-Of a Brix value not exceeding 20
2009 2900	AB	-Other
		-Juice of any other single citrus fruit
		-Of a Brix value not exceeding 20
2009 3110	AB	-Lemon juice
2009 3190	AB	-Other
		-Other
2009 3910	AB	-Lemon juice
2009 3990	AB	-Other
		-Pineapple juice
2009 4100	AB	-Of a Brix value not exceeding 20
2009 4900	AB	-Other
2009 5000	AB	-Tomato juice
		-Grape juice (including Grape must)
2009 6100	AB	-Of a Brix value not exceeding 30
2009 6900	AB	-Other
		-apple juice
2009 7100	AB	-Of a Brix value not exceeding 20
2009 7900	AB	-Other
		-juice of any Other single fruit or Vegetable
2009 8100	AB	--Cranberry juice
		-Other

		-fruit juice
2009 8912	AB	-Mango juice
2009 8913	AB	-Passion-fruit juice
2009 8914	AB	---Guva juice
2009 8915	AB	-pear juice
2009 8919	AB	-Other
2009 8920	AB	---Vegetable juice
		-Mixtures of juices
2009 9010	AB	-Of fruit juices
2009 9090	AB	-Other
15 20		Glycerol, crude; glycerol waters and glycerol lyes
1520 0000	AB	Glycerol, crude glycerol waters and glycerol lyes
21 03		Sauces and preparations therefor; mixed condiments and mixes seasonings mustard flour and meal and prepared mustard
2103 1000	AB	-soya sauce
2103 2000	AB	-Tomato ketchup and Other Tomato sauces
2103 3000	AB	-Mustard flour and meal and Prepared Mustard
		-Other
2103 9010	AB	---Gourmet powder
2103 9020	AB	-Aromatic bitters, 44 2% - 49 2% of which is alcoholic strength by volume, 1.5% -6% of which is spices and various ingredients by weight and 4% - 10% of which is sugar by weight
2103 9090	AB	-Other
21 06		Food preparations not elsewhere specified or included
2106 1000	AB	-Protein concentrates and textured Protein substances
		-Other
2106 9010	AB	-Beverage bases
2106 9020	AB	---Compound alcoholic preparations of a kind used for the manufacture of beverages
2106 9030		-royal jelly, put up as tonic essences
2106 9030 10	ABFE	Royal jelly, put up as tonic essences containing composition of endangered plants
2106 9030 90	AB	Other royal jelly, put up as tonic essences
2106 9040	AB	---Coconut juice
2106 9050		-Seal oil capsules
2106 9050 10	ABEF	Endangered seal oil capsules
2106 9050 90	AB	Other seal oil capsules
2106 9090		-Other

2106 909001	AB	Milk protein partial hydrolysate formula, milk protein hydrolysis amino acid formula special depth formula, infant milk powder
2106 9090 10	ABEF	Other food preparations containing composition of endangered plants, not elsewhere specified or included
2106 9090 90	AB	Other food preparations, not elsewhere specified or included
22 02		Waters, including mineral waters and aerated waters, containing added sugar or other sweetening matter or flavoured, and other Non-alcoholic beverages, not including fruit or vegetable juices of heading No. 20 09
2202 1000		-Waters, including Mineral waters and aerated waters, containing added sugar or other sweetening matter or flavoured
2202 1000 10	ABEF	Waters containing added sugar or other sweetening matter or flavoured of endangered animals and plant (including mineral waters and aerated water)
2202 1000 90	AB	Other waters , containing added sugar or other sweetening matter or flavoured (including mineral waters and aerated waters)
2202 9000		-Other
2202 9000 11	ABEF	Non-alcoholic beverages, in bulk, containing endangered animals and plants compositions (Other than fruit juices and vegetable juices of heading No. 2009)
2202 9000 19	AB	Other Non-alcoholic beverages, in bulk (Other than fruit juices and vegetable juices of heading No. 2009)
2202 9000 91	ABEF	Non-alcoholic beverages, with other packing containing compositions of endangered animals and plants (Other than fruit juices and vegetable juices of heading No. 2009)
2202 9000 99	AB	Non-alcoholic beverages, with other packing (other than fruit juices and vegetable juices of heading No. 2009)
20 05		Other vegetables prepared or preserved otherwise than by vinegar or acetic acid, not frozen, other than products of heading No. 20 06
2005 1000	AB	-Homogenized vegetables
2005 2000	AB	-Potatoes

2005 4000	AB	-Peas (<i>Pisum sativum</i>)
		-Beans (Vigna spp., Phaseolus spp.)
		-Beans , Shelled
		---in airtight containers
2005 5111	AB	-red bean paste
2005 5119	AB	-Other
		-Other
2005 5191	AB	-red Bean paste
2005 5199	AB	-Other
		-Other
2005 5910	AB	---in airtight containers
2005 5990	AB	-Other
		-Asparagus
2005 6010	AB	---in airtight containers
2005 6090	AB	-Other
2005 7000	AB	-Olives
2005 8000	AB	-Sweet corn (<i>Zea mays</i> var. <i>saccharata</i>)
		-Other vegetables and Mixtures of vegetables
		-Bamboo shoots
2005 9110		-Bamboo shoots in airtight containers
2005 9110 10	ABE	Acidosasa chinensis shoots in airtight containers , not preserved by vinegar
2005 9110 90	AB	Other bamboo shoots in airtight containers, not preserved by vinegar
2005 9190		-Other
2005 9190 10	ABE	Acidosasa chinensis shoots , not preserved by vinegar
2005 9190 90	AB	Other bamboo shoots, not prepared or preserved by vinegar
		-Other
2005 9920	AB	-Broad Beans, in airtight containers
2005 9940	AB	-Hot pickled mustard tubers
2005 9950	AB	---Chueh tsai (fiddle-head) , salted
2005 9960	AB	-Scallion , salted
		-Other
2005 9991	AB	----in airtight containers
2005 9999		-Other
2005 9999 10	ABFE	Cactus , not preserved by vinegar
2005 9999 20	ABFE	Atoe , not preserved by vinegar
2005 9999 90	AB	other vegetables and mixtures of vegetables , not preserved by vinegar

05 08		Coral and similar materials , unworked or simply prepared but not otherwise worked; shells of molluscs, crustaceans or echinoderms and cuttle-bone, unworked or simply prepared but not cut to shape, powder and waste thereof
0508 0010		-powder and Waste
0508 0010 10	AFEB	Powder and waste of endangered aquatic product(including shells of molluscs, crustaceans or echinoderms and cuttle-bone)
0508 0010 90	AB	Powder and waste of other aquatic products (including shells of molluscs, crustaceans or echinoderms and cuttle-bone)
0508 0090		-Other
0508 0090 10	AFEB	Shells bone of coral and endangered aquatic products (including shells of molluscs, crustaceans or echinoderms and cuttle-bone)
0508 0090 90	AB	Shells and bone of other aquatic products (including shells of molluscs, crustaceans or echinoderms and cuttle-bone)
35 05		Dextrins and other modified starches (for example, pregelatinized or esterified starches); glues based on starches, or on dextrins or other modified starches
3505 1000	A	-Dextrins and other modified starches
3505 2000	A	-Glues
03 03		Fish, frozen, excluding fish fillets and other fish meat of heading No. 03 04
		-Salmonidae , excluding Livers and roes
0303 1100	AB	-Sockeye salmon (red salmon) (<i>Oncorhynchus nerka</i>)
0303 1200	AB	-Other Pacific salmon (<i>Oncorhynchus gorbuscha</i> , <i>Oncorhynchus keta</i> , <i>Oncorhynchus tshawytscha</i> , <i>Oncorhynchus kisutch</i> , <i>Oncorhynchus masou</i> and <i>Oncorhynchus rhodurus</i>)
0303 1300	AB	-Atlantic salmon (<i>Salmo salar</i>) and Danube salmon (<i>Hucho hucho</i>)
0303 1400	AB	-Trout (<i>Salmo trutta</i> , <i>Oncorhynchus mykiss</i> , <i>Oncorhynchus clarki</i> , <i>Oncorhynchus aguabonita</i> , <i>Oncorhynchus gilae</i> , <i>Oncorhynchus apache</i> and <i>Oncorhynchus chrysogaster</i>)
0303 1900		-Other
0303 1900 10	ABE	Chuan-shan taimen (<i>hucho taimen</i>) (excluding liver and roes) frozen
0303 1900 20	ABE	Qinting lenok (<i>brachymystax lenok</i>) (excluding liver and roes) frozen
0303 1900 90	AB	Other salmonidae (excluding liver and roes) frozen (excluding livers and roes)

0303 2300	AB	-Tilapia(<i>Oreochromis</i> spp.)
0303 2400	AB	--Catfish (<i>Pangasius</i> spp., <i>Silurus</i> spp., <i>Clarias</i> spp., <i>Ictalurus</i>)
0303 2500	AB	--Carp (<i>Cyprinus carpio</i> , <i>Carassius carassius</i> , <i>Ctenopharyngodon idellus</i> , <i>Hypophthalmichthys</i> spp., <i>Cirrhinus</i> spp. , <i>Mylopharyngodon piceus</i>)
0303 2600		-Eel(<i>Anguilla</i> spp.)
0303 2600 10	ABE	Marbled eels , frozen (excluding livers and roes)
0303 2600 20	ABEF	European eels, frozen (excluding livers and roes)
0303 2600 90	AB	Other eels (<i>anguilla</i> spp.) , frozen (excluding livers and roes)
0303 2900		-Other
0303 2900 01	AB	Nile perch (<i>Lates niloticus</i>) , frozen (excluding livers and roes)
0303 2900 90	AB	Snakeheads (<i>Channa</i> spp.) , frozen (excluding livers and roes)
		-Flatfish (<i>Pleuroneidae</i> , <i>Bothidae</i> , <i>Cynoglossidae</i> , <i>Soleidae</i> , <i>Scophthalmidae</i> and <i>Citharidae</i>), excluding livers and roes
		-Halibut (<i>Reinhardtius hippoglossoides</i> , <i>Hippoglossus hippoglossus</i> , <i>Hippoglossus stenolepis</i>)
0303 3110	AB	---Greenland Halibut
0303 3190	AB	-Other
0303 3200	AB	-Plaice (<i>Pleuronectes platessa</i>)
0303 3300	AB	-Sole (<i>Solea</i> spp.)
0303 3400	AB	-Turbot (<i>Psetta maxima</i>)
0303 3900	AB	-Other
		-Tunas (of the genus <i>Thunnus</i>) (tuna genus) , skipjack or stripe-bellied bonito or belteol bonito (oceanic bonito), excluding livers and roes
0303 4100	AB	-Albacore or longfinned tunas (<i>Thunnus alalunga</i>)
0303 4200	AB	-Yellowfin tunas (<i>Thunnus albacares</i>)
0303 4300	AB	-Skipjack or belted bonito
0303 4400	ABU	-Bigeye tunas(<i>Thunnus obesus</i>)
		-Atlantic and pacific bluefin tunas (<i>Thunnus thynnus</i> , <i>Thunnus orientalis</i>)
0303 4510	ABU	-Atlantic bluefin tunas
0303 4520	AB	-pacific bluefin tunas
0303 4600	AB	-Southern bluefin tunas (<i>Thunnus maccoyii</i>)
0303 4900	AB	-Other
0303 5100 暂	AB	-Herrings (<i>Clupea harengus</i> , <i>Clupea pallasii</i>)
0303 5300	AB	-sardines (<i>Sardina pilchardus</i> , <i>Sardinops</i> spp.), sardinella (<i>Sardinella</i> spp.) , bristling or sprats (<i>Sprattus sprattus</i>)

0303 5400	AB	-Mackerel (<i>Scomber scombrus</i> , <i>Scoruber australasicus</i> , <i>Scomber japonicus</i>)
0303 5500	AB	-jack and horse mackerel(<i>Trachurus</i> spp.)
0303 5600	AB	--Cobia (<i>Rachycentron canadum</i>)
0303 5700	ABU	-Swordfish (<i>Xiphias gladius</i>)
		-Fish of the families bregmacerotidae, eulichthyidae, Gadidae, macrouridae, melanonidae, merluccidae, moridae and muraenolepididae, excluding livers and roes
0303 6300 暂	AB	--Cod (<i>Gadus morhua</i> , <i>Gadus ogac</i> , <i>Gadus macrocephalus</i>)
0303 6400	AB	-Haddock (<i>Melanogrammus aeglefinus</i>)
0303 6500	AB	--Coalfish(<i>Pollachius virens</i>)
0303 6600	AB	-Hake (<i>Merluccius</i> spp., <i>urophycis</i> spp.)
0303 6700	AB	-Alaska Pollack (<i>Theragra chalcogramma</i>)
0303 6800	AB	-Blue whittings (<i>Micromesistius poutassou</i> , <i>Micromesistius australis</i>)
0303 6900	AB	-Other
		-other fish , excluding Livers and roes
0303 8100		-Dogfish and Other sharks
0303 8100 10	ABEF	Whale shark (<i>Rhincodon</i>) , man-eating shark (<i>Carchodon</i>), basking shark (<i>Cetorhinus</i>) (excluding livers and roes) , frozen
0303 8100 90	AB	Other dogfish and other sharks (excluding livers and roes) , frozen
0303 8200	AB	-Rays and skates(<i>Rajidae</i>)
0303 8300	ABU	-Toothfish (<i>Dissostichus</i> spp.)
0303 8400	AB	-Seahass (<i>Dicentrarchus</i> spp.)
		-Other
0303 8910	AB	-Scabber fish (<i>Trichurus</i>)
0303 8920	AB	-Yellow croaker(<i>Pseudosciaena</i>)
0303 8930	AB	-Tilapia
0303 8990		-Other
0303 8990 01	AB	Other perch , frozen (excluding livers and roes)
0303 8990 10	ABFE	Other endangered fish, frozen (excluding livers and roes)
0303 8990 90	AB	Other fish frozen (excluding livers and roes)
0303 9000		-Livers and roes
0303 9000 10	ABEF	Livers and roes of endangered fish , frozen
0303 9000 90	AB	Other livers and roes, frozen

19 04		Prepared foods obtained by the swelling or roasting of cereals or cereal products (for example, corn flakes); cereals (other than maize (corn)) in grain form or in the form of flakes or other worked grains (except flour, groats and meal) , precooked or otherwise prepared, not elsewhere specified or included
1904 1000	AB	-Prepared foods obtained by the swelling or roasting of cereals or cereal products
1904 2000	AB	-Prepared foods obtained from unroasted cereal flakes or from mixtures of unroasted cereal flakes and roasted cereal flakes or swelled cereals
1904 3000	AB	-Bulgur wheat
1904 9000	AB	-Other
17 04		Sugar confectionery (including white chocolate), not containing cocoa
1704 1000	AB	-Chewing Gum, whether or not sugarcoated
1704 9000	AB	-Other
08 07		Melons (including watermelons) and papaws (papayas) , fresh
		-Melons (including watermelons)
0807 1100	AB	-watermelons
		-Other
0807 1910	AB	-Hami Melons
0807 1920	AB	---Cantaloupe and Galia Melons
0807 1990	AB	-Other
0807 2000	AB	-Papaws (papayas)
03 07		molluscs, whether in shell or not, live, fresh, chilled, frozen, dried, salted or in brine; smoked molluscs, whether in shell or not, whether or not cooked before or during the smoking process; flours , meals and pellets of mollusks , fit for human consumption
		-Oysters
		-Live, fresh or chilled
0307 1110	AB	-for cultivation
0307 1190	AB	-Other
0307 1900	AB	-Other
		-Scallops, including queen scallops, of the genera Pecten, Chlamys or Placopecten
		-Live, fresh or chilled
0307 2110		-for cultivation

0307 2110 10	ABE	Pearloyster(<i>Pinctada maxima</i>) , for cultivation
0307 2110 90	AB	Other scallops(including queen scallops) for cultivation)
0307 2190		-Other
0307 2190 10	ABE	Other pearloyster (<i>Pinctada maxima</i>) , live, fresh or chilled
0307 2190 90	AB	Other scallops (including queen scallops, excluding for cultivation) live , fresh or chilled
0307 2900		-Other
0307 2900 10	ABE	Other pearloyster (<i>pinctada maxima</i>), frozen , dried, salted or in brine (including smoked, in whether in shell or not whether or not cooked before or during the smoking process)
0307 2900 90	AB	Other scallops (including queen scallops) , frozen, dried, salted or in brine (including smoked, in whether in shell or not, whether or not cooked before or during the smoking process)
		Mussels (<i>Mytilus</i> spp., <i>Perna</i> spp.)
		-Live, Fresh or chilled
0307 3110	AB	-for cultivation
0307 3190		-Other
0307 3190 01	AB	Mussels , fresh or chilled
0307 3190 90	AB	Other mussels live
0307 3900		-Other
0307 3900 01	AB	Mussels , frozen
0307 3900 90	AB	Other mussels, dried, salted or in brine (including smoked , in whether in shell or not, whether or not cooked before or during the smoking process)
		-Cuttle fish (<i>Sepia officinalis</i> , <i>Rossia macrosoma</i> , <i>Sepiola</i> spp.) and squid (<i>Ommastrephes</i> spp. , <i>Loligo</i> spp. , <i>nototodarus</i> spp. , <i>Sepioteuthis</i> spp.)
		-Live, fresh or chilled
0307 4110	AB	-for cultivation
0307 4190	AB	-Other
0307 4900	AB	-Other
		-Octopus (<i>Octopus</i> spp.)
0307 5100	AB	-Live, fresh or chilled
0307 5900	AB	-Other
		-Snails, Other than sea Snails
0307 6010		-for cultivation
0307 6010 10	ABFE	Endangered snails, other than sea snails, for cultivation
0307 6010 90	AB	Other snails, other than sea snails , for cultivation

0307 6090		-Other
0307 6090 10	ABFE	Other endangered snails , other than sea snails
0307 6090 90	AB	Other snails, other than sea snails, live, fresh, chilled, frozen dried, salted or in brine (including smoked, in whether in shell or not, whether or not cooked before or during the smoking process)
		-Clam cockle and ark shell (families arcidae, arcticidae, cardiidae, donacidae, hiatellidae, mactridae, mesoclesmaticlae, myidae, semelidae, solecurtidae, solenidae, tridacnidae, veneridae)
		-Live, fresh or chilled
0307 7110		-for cultivation
0307 7110 10	ABEF	Tridacna stone, live, fresh or chilled , for cultivation
0307 7110 90	AB	Clam, cockle and ark shell (arcidae, arcticidae, cardiidae, donacidae, hiatellidae, mactridae, mesodesmatidae, myidae, mesociesmatidae, solecurtidae, solenidae, tridacnidae, veneridae) ,live, fresh or chilled, for cultivation
		-Other
0307 7191	AB	---Clam
0307 7199		-Other
0307 7199 10	ABEF	Tridacna stone, live, fresh or chilled
0307 7199 90	AB	Clam, cockle and ark shell (arcidae, arcticidae, cardiidae, donacidae, hiatellidae, mactridae, mesodesmatidae, myidae, mesodesmatidae, solecurtidae, solenidae, tridacnidae, veneridae) , live , fresh or chilled
		-Other
0307 7910	AB	---Ceam
0307 7990	AB	-Other
0307 7990 10	ABEF	Tridacna stone , frozen, dried, salted (including smoked , in whether in shell or not; whether or not cooked before or during the smoking process)
0307 7990 90	AB	Clam, cockle and ark shell (arcidae, arcticidae, cardiidea, donacidae, hiatellidae, mactridae, mesodesmaticlae, myidae, mesodesmatidae, solecurtidae, solenidae, tridacnidae, veneridae) , frozen, dried, salted (including smoked, in whether in shell or not, whether or not cooked before or during the smoking process)
		-Abalone (ormer)
		-Live, fresh or chilled
0307 8110	AB	-for cultivation
0307 8190	AB	-Other
0307 8900	AB	-Other

		-other, including flours, meals and pellets, fit for human consumption
		-Live, fresh or chilled
0307 9110		-for cultivation
0307 9110 10	AFEB	Endangered molluscs , live , fresh , chilled , for cultivation
0307 9110 90	AB	Other molluscs , live , fresh , chilled for cultivation
0307 9190		-Other
0307 9190 10	ABEF	Other endangered molluscs, live, fresh, chilled
0307 9190 90	AB	Other molluscs, live , fresh , chilled
0307 9900		-Other
0307 9900 10	ABEF	Other endangered molluscs , frozen , dried , salted or in brine, including flours , meals and pellets of mollusks, fit for human consumption, excluding crustaceans,(including smoked , whether in shell or not, whether or not cooked before or during the smoking process)
0307 9900 90	AB	Other molluscs , frozen , dried , salted or in brine, including flours, meals and pellets of mollusks, fit for human consumption, excluding crustaceans, (including smoked, whether in shell or not whether or not cooked before or during the smoking process)
03 05		Fish , dried , salted or in brine; smoked fish, whether or not cooked before or during the smoking process; flours, meals and pellets of fish, fit for human consumption
0305 1000	AB	-Flours, meals and pellets of fish, fit for human consumption
0305 2000		-Livers and roes, dried, smoked, salted or in brine
0305 2000 10	ABFE	Livers and roes of endangered fish dried, smoked, salted or in brine
0305 2000 90	AB	Other livers and roes of fish, dried, smoked, salted or in brine
		-fish fillets, dried, salted or in brine, but not smoked
0305 3100		-Tilapias (Oreochromis spp.) , catfish (Pangasius spp. , Silurus spp. , Clarias spp. , Ictalurus spp.) ,carp (Cyprinus carpio , Carassius carassius , Ctenopharyngodon idellus, Hypophthalmichthys spp. , Cirrhinus spp. , Mylopharyngodon piceus), eels (Anguilla spp.) ,Nile perch (Lates niloticus) and snakeheads (Channa spp.)
0305 3100 10	ABE	Fish fillets of marbled eels, dried, salted or in brine, but not smoked

0305 3100 20	ABEF	Fish fillets of european eels, dried, salted or in brine, but not smoked
0305 3100 90	AB	Fish fillets of tilapia(oreochromis spp.), catfish (Pangasius spp. , Silurus spp. , Clarias spp. , Ictalurus spp.), carp (Cyprinus carpio, Carassius carassius, Ctenopharyngodon idellus , Hypophthalmichthys spp., Cirrhinus spp., Mylopharyngodon piceus), eels (Anguilla spp.) , Nile perch (Lates niloticus) and snakeheads (Channa spp.) , dried salted or in brine, but not smoked
0305 3200	AB	-Fish of the families Bregmacerotidae, Euclichthyidae, Gadidae, Macrouridae, Melanonidae, Merlucciidae, Moridae and Muraenolepididae
0305 3900		-Other
0305 3900 10	EAB	Endangered fish fillets, dried, salted or in brine (other than smoked)
0305 3900 90	AB	Other fish fillets, dried, salted or in brine (other than smoked)
		-Smoked fish, including fillets, but excluding offal for human consumption
		-Pacific salmon (Oncorhynchus nerka, Oncorhynchus gorbuscha, Oncorhynchus keta, Oncorhynchus tshawytscha, Oncorhynchus kisutch, Oncorhynchus masou and Oncorhynchus rhodurus) , Atlantic salmon (salmo salar) and Danube salmon(hucho hucho)
0305 4110	AB	-Atlantic salmon
0305 4120	AB	-Pacific salmon and Danube salmon
0305 4200	AB	-Herrings (Atlantic Herring , Pacific Herring)
0305 4300	AB	-Trout (Salmo trutta, Oncorhynchus mykiss, Oncorhynchus clarki, Oncorhynchus aguabonita, Oncorhynchus gilae, Oncorhynchus apache and Oncorhynchus chrysogaster)
0305 4400		-Tilapias (Oreochromis spp.) , catfish (Pangasius spp. , Silurus spp. , Clarias spp. , Ictalurus spp.) ,carp (Cyprinus carpio , Carassius carassius, Ctenopharyngodon idellus, Hypophthalmichthys spp. , Cirrhinus spp. , Mylopharyngodon piceus) , eels (Anguilla spp.) , Nile perch (Lates niloticus) and snakeheads (Channa spp.)
0305 4400 10	ABE	Marbled eels and fillets, smoked (other than edible for human consumption)
0305 4400 20	ABEF	European eels and fillets, smoked (other than edible for human consumption)

0305 4400 90	AB	Tilapia(oreothromis spp.) , catfish (Pangasius spp., Silurus spp. , Clarias spp. , Ictalurus spp.) , carp(Cyprinus carpio , Carassius carassius, Ctenopharyngodon idellus, Hypophthalmichthys spp. , Cirrhinus spp. , Mylopharyngodon piceus) , eels (Anguilla spp.) , Nile perch(Lates niloticus) and snakeheads (Channa spp.) and fillets, (other than edible for human consumption)
0305 4900		-Other
0305 4900 20	BEF	Other endangered fish and its fillets , smoked
0305 4900 90	AB	Other fish and their fillets, smoked
		-Dried fish, other than edible fish offal, whether or not salted but not smoked
0305 5100	AB	--Cod (Gadus morhua , Gadus ogac, Gadus macrocephalus)
		-Other
0305 5910	FEAB	-Pipefish and hippocampi
0305 5990		-Other
0305 5990 10	AFEB	Other endangered fish other than edible for human consumption, dried (whether or not salted but not smoked)
0305 5990 90	AB	Other fish other than edible for human consumption, dried (whether or not salted but not smoked) -fish(excluding offal for human consumption) , salted but not dried nor smoked and fish in brine
0305 6100	AB	-Herrings (Atlantic Herring , Pacific Herring)
0305 6200	AB	--Cod (Atlantic cod, Pacific cod, Greenland cod)
0305 6300	AB	-Anchovies (Engraulis spp.)
0305 6400		-Tilapias (Oreothromis spp.) , catfish (Pangasius spp. , Silurus spp. , Clarias spp. , Ictalurus spp.) , carp (Cyprinus carpio , Carassius carassius, Ctenopharyngodon idellus, Hypophthalmichthys spp. , Cirrhinus spp. , Mylopharyngodon piceus) , eels (Anguilla spp.) , Nile perch (Lates niloticus) and snakeheads (Channa spp.)
0305 6400 10	ABE	Marbled eels, dried, salted or in brine, other than deible for human consumption, but not smoked
0305 6400 20	ABEF	European eels, dried salted or in brine, other than deible for human consumption, but not smoked

0305 6400 90	AB	Tilapia (oreothromis spp.), catfish (Pangasius spp., Silurus spp., Clarias spp., Ictalurus spp.), carp (Cyprinus carpio, Carassius carassius, Ctenopharyngodon idellus, Hypophthalmichthys spp., Cirrhinus spp., Mylopharyngodon piceus), eels (Aguilla spp.), Nile perch (Lates niloticus) and snakeheads (Channa spp.), other than edible for human consumption, but not smoked
		-Other
0305 6910	AB	-Scabber fish (Trichurius)
0305 6920	AB	-Yellow croaker (Pseudoscaena)
0305 6930	AB	-Butterfish (Pampus)
0305 6990		-Other
0305 6990 10	ABFE	Other endangered fish, other than edible for human consumption, salted or in brine (not dried Nor smoked)
0305 6990 90	AB	Other fish, other than edible for human consumption salted or in brine (not dried Nor smoked) -Fish head, tail, maws and other edible fish offal, for human consumption
0305 7100		-Shark fin
0305 7100 10	ABEF	Sharks fins of whale (Rhincodon), man-eating shark (Cacharodon), basking shark (Cetorhinus), whether or not dried , salted , in brine and smoked
0305 7100 90	AB	Other sharks fins, whether or not dried, salted, in brine and smoked, whether or not dried, salted, in brine and smoked
0305 7200		-fish head, tail and maws
0305 7200 10	ABEF	Endangered fish of fish head, tail and maws, whether or not dried , salted , in brine and smoked
0305 7200 90	AB	Other fish of fish head, tail and maws, whether or not dried, salted, in brine and smoked
0305 7900		-Other
0305 7900 10	ABEF	Other endangered fish edible for human consumption, whether or not dried , salted, in brine and smoked
0305 7900 90	AB	Other fish edible for human consumption, whether or not dried , salted , in brine and smoked
01 06		Other live animals
		-Mammals
		-Primates
0106 1110	AFEB	-Pure-bred breeding
0106 1190	AFEB	-Other
		-Whales, dolphins and porpoises(mammals of the order Cetacea); manatees and dugongs (mammals of the order Sirenia); seal, sea lion and walrus (Pinnipedia mammal)

		-Whales, dolphins and porpoises (mammals of the order Cetacea) manatees and dugongs (mammals of the order Sirenia)
0106 1211	ABEF	-Pure-bred breeding
0106 1219	ABEF	-Other
		-Seal, sea lion and walrus (mammals of the suborder Pinnipedia)
0106 1221	ABEF	-Pure-bred breeding
0106 1229	ABEF	-Other
		--Camel and Other camelids (camelidae)
0106 1310		-Pure-bred breeding
0106 1310 10	ABFE	Endangered camel and other endangered camel familia animals, pure-bred breeding (including domesticated and artificially bred)
0106 1310 90	AB	Other camel and other camel familia animals, pure-bred brdding
0106 1390		-Other
0106 1390 10	AFEB	Endangered camel and other endangered camel familia animals (including domesticated and artificially bred)
0106 1390 90	AB	Other camel and other camel familia animals
		-Rabbits and hares
0106 1410		-Pure-bred breeding
0106 1410 10	ABEF	Endangered hares, pure - bred breeding (including domesticated and artificially bred)
0106 1410 90	AB	Rabbits and Other hares, pure-bred breeding
0106 1490		-Other
0106 1490 10	ABEF	Other endangered hares (including domesticated and artificially bred)
0106 1490 90	AB	Other rabbits and hares
		-Other
0106 1910		-Pure-bred breeding
0106 1910 10	ABFE	other endangered mammals , pure-bred breeding(including domesticated and artificially bred)
0106 1910 90	AB	Other mammals , pure-bred breeding
0106 1990		-Other
0106 1990 10	AFEB	Other endangered mammals, including domesticated and artificially bred
0106 1990 90	AB	Other mammals
		-Reptiles(including snakes and turtles)
		-Pure-bred breeding
0106 2011	AFEB	----Crocodiles for cultivation
0106 2019	FEAB	-Other
0106 2020		-for human consumption

0106 2020 10	AFEB	Snakes for human consumption(including domesticated and artificially bred)
0106 2020 20	ABFE	Turtles , for human consumption (including domesticated and artificially bred)
0106 2020 90	FEAB	Other reptiles, for human consumption(including domesticated and artificially bred)
0106 2090	FEAB	-Other
		-Birds
		-Birds of prey
0106 3110	AFEB	-Pure-bred breeding
0106 3190	ABFE	-Other
		-Psittaciformes (including parrots, parakeets, macaws and cockatoos)
0106 3210		-Pure-bred breeding
0106 3210 10	AB	Budgerigar, pure-bred breeding
0106 3210 20	AB	Cockatiel (Nymphicus hollaruiicus), pure-bred breeding
0106 3210 90	ABFE	other birds of psittaciformes, pure-bred breeding (including domesticated and artificially bred)
0106 3290		-Other
0106 3290 10	AB	Budgerigar, other than pure-bred breeding
0106 3290 20	AB	Cockatiel (Nymphicus hollandicus) , other than pure-bred breeding
0106 3290 90	ABFE	Other birds of psittaciformes (including domesticated and artificially bred) other than pure-bred breeding
		-Ostriches; emus
0106 3310		-Pure-bred breeding
0106 3310 10	ABFE	Endangered ostriches, pure-bred breeding (including domesticated and artificially bred)
0106 3310 90	AB	Other ostriches and emus, pure-bred breeding
0106 3390		-Other
0106 3390 10	ABFE	Other endangered ostriches (including domesticated and artificially bred)
0106 3390 90	AB	Other ostriches and emus
		-Other
0106 3910		-Pure-bred breeding
0106 3910 10	ABFE	Other endangered birds, pure-bred breeding (including domesticated and artificially bred)
0106 3910 90	AB	Other birds, pure-bred breeding
		-for human consumption
0106 3921	AB	-Squabs
0106 3923	FEAB	-Teals
0106 3929		-Other

0106 3929 10	ABFE	Other endangered birds, for human consumption (including domesticated and artificially bred)
0106 3929 90	AB	Other birds for human consumption
0106 3990		-Other
0106 3990 10	ABFE	Other endangered bird, including domesticated and artificially bred
0106 3990 90	AB	other birds
		-Insects
		-Bees
0106 4110	AB	-Pure-bred breeding
0106 4190		-Other
0106 4190 01	ABS	Trichogramma
0106 4190 90	AB	Other bees
		-Other
0106 4910		-Pure-bred breeding
0106 4910 10	ABFE	Other endangered insects , pure - bred breeding (including domesticated and artificially bred)
0106 4910 90	AB	Other insects, pure -bred breeding
0106 4990		-Other
0106 499001	ABS	Predatory mites
0106 4990 10	ABFE	Other endangered insects(including domesticated and artificially bred)
0106 4990 90	AB	Other insects
		-Other
		-Pure-bred breeding
0106 9011		-Tadpole and young frogs
0106 9011 10	ABFE	Endangered tadpole and young frogs, pure-bred breeding
0106 9011 90	AB	Other tadpole and young frogs, pure-bred breeding
0106 9019		-Other
0106 9019 10	ABFE	Other endangered animals, pure-bred breeding (including domesticated and artificially bred)
0106 9019 90	AB	Other animals , pure-bred breeding
0106 9090		-Other
0106 9090 10	ABFE	Other endangered animals , purebred breeding (including domesticated and artificially bred)
0106 9090 90	AB	Other animals
14 04		Vegetable products not elsewhere specified or included
1404 2000	AB	-Cotton linters
		-Other
1404 9010	AB	-Raw Vegetable materials of a kind used primarily in dyeing or tanning
1404 9090	AB	-Other

20 01		Vegetables, fruit, nuts and other edible parts of plants, prepared or preserved by vinegar or acetic acid
2001 1000	AB	-Cucumbers and gherkins
		-Other
2001 9010		---Garlic
2001 9010 10	AB	Garlic bulbs, garlic cloves, prepared by vinegar or acetic acid (whether or not added sugars or skinned)
2001 9010 90	AB	other garlic prepared by vinegar or acetic acid (whether or not added sugars or skinned other than garlic bulbs, garlic cloves)
2001 9090		-Other
2001 9090 10	ABE	Matsutske , prepared or preserved by vinegar or acetic acid
2001 9090 20	ABE	Acidosasa chinensis shoots , prepared or preserved by vinegar or acetic acid
2001 9090 30	ABFE	Aloe, prepared or preserved by vinegar or acetic acid
2001 9090 40	ABFE	Cactus, prepared or preserved by vinegar or acetic acid
2001 9090 50	ABE	Water shield, prepared or preserved by vinegar or acetic acid
2001 9090 90	AB	Vegetables, fruit nuts and other edible parts of plants, prepared or preserved by vinegar or acetic acid

Appendix III

Supervision Requirements of Customs of Main Non-Agricultural Imports

HS Code	Code	Article Description
85. 42		Electronic integrated circuits
		-electronic integrated circuits
8542. 3100		-Processors and controllers, whether or not combined with memories, converter, logic circuit, amplifier, clock and timing circuit or other circuit
8542. 3200		-Memories
8542. 3300		-amplifier
8542. 3900		-Other
8542. 9000		-Parts
85. 41		Diodes, transistors and similar semi-conductor devices; photosensitive semi-conductor devices, including photovoltaic cells whether or not assembled in modules or made up into panels; light emitting diodes; mounted piezo-electric crystals
8541. 1000		-Diodes, Other than photosensitive or Light emitting diodes
		-Transistors , Other than photosensitive transistors
8541. 2100		-with a dissipation rate of less than I W
8541. 2900		-Other
8541. 3000		-Thyristors, diacs and triacs, other than photosensitive devices -Photosensitive semiconductor devices, including photovoltaic cells whether or not assembled in modules or made up into panels; light emitting diodes
8541. 4010		-Light emitting diodes
8541. 4020		-Solar cells
8541. 4090		-Other
8541. 5000		-Other Semiconductor devices
8541. 6000		-mounted Piezo-Electric Crystals
8541. 9000		-Parts
85. 17		Telephone sets, including telephones for cellular networks or for other wireless networks; other apparatus for the transmission or reception of voice, images or other data, including apparatus for communication in a wired or wireless network(such as a local or wide area network) .other than transmission or reception apparatus of heading 84. 43, 85. 25, 85. 27 or 85. 28 -Telephone sets, including telephones for cellular networks or for other wireless networks
8517. 1100		-Line Telephone sets with cordless handsets

8517. 1100 10	AM	Cordless encrypting Telephones
8517. 1100 90	A	Other cordless Telephones
		-Telephones for cellular net works or for Other wireless networks
8517. 1210		-Wireless Telephone handsets (including vehicle installed)
8517. 1210 11	AO	Full set of parts of GSM digital wireless Telephones handheld
8517. 1210 19	AO	Other GSM digital wireless Telephones handsets
8517. 1210 21	AO	Full set of parts of CDMA digital wireless phones handheld
8517. 1210 29	AO	Other CDMA wireless telephones handheld
8517. 1210 90	AO	Other wireless Telephones handsets (including vehicle installed)
8517. 1220		-Walkie-talkie
8517. 1290	O	-Other
8517. 1800		-Other
8517. 1800 10	AM	Other encrypting Telephones
8517. 1800 90	A	Other Telephones
		-Other apparatus for transmission or reception of voice, images or other data including apparatus for communication in a wired or wireless network (such as a local or wide area network)
		-base stations
8517. 6110		-Mobile communication base station
8517. 6110 10	O	GSM mobile communication base station
8517. 6110 20	O	CDMA mobile communication base station
8517. 6110 30		TACS mobile communication base station
8517. 6110 90	O	Other mobile communication base station
8517. 6190	O	-Other
		-machines for the reception, conversion and transmission or regeneration of voice images or other data, including switching and routing apparatus
		-Digital program - controlled telephonic or telephonic switching apparatus
8517. 6211		-Public telephonic switching apparatus, toll telephonic switching apparatus, telegraphic switching apparatus
8517. 6212	O	-Mobile communication switching system
8517. 6219	A	-Other telephonic switching apparatus
		-optical communication equipments
8517. 6221	O	-optical Line Terminal equipments and pulse code modulation equipments
8517. 6222	O	-Optical transmission equipments for wave-division multiplexing
8517. 6229		-Other
8517. 6229 10	AMO	Optical communication encrypting routers
8517. 6229 90	OA	Other optical communication equipment
		-Other telecommunication apparatus for digit Line system
8517. 6231		----communication network synchronization equipments

8517. 6232		-Ethernet exchangers
8517. 6232 10	M	Non - optical communication encrypting ethernet exchangers
8517. 6232 90		Other Non - optical communication ethernet exchangers
8517. 6233	A	----IP Telephone signal Converters
8517. 6234	A	-Modem
8517. 6285	A	-Hubs
8517. 6236		-Routers
8517. 6236 10	M	Non - optical communication encrypting routers
8517. 6236 90		Other routers
8517. 6237		-wired network interface Card
8517. 6239	O	-Other
		-Other
8517. 6292		-Wireless network interface cards
8517. 6293		-fixed Wireless access station
8517. 6294		-Wireless headset
8517. 6299		-Other
		-Other
8517. 6910		-Other equipments in a Wireless network
8517. 6910 01	As	Portable receivers for calling ,promoting and paging
8517. 6910 90	AO	Other wireless communication equipments
8517. 6990		-Other equipments in a wired network
		-Parts
8517. 7010		-of Digital program-controlled telephonic or telegraphic switching apparatus
8517. 7020		-Of optical line terminal equipments and pulse code modulation equipments
8517. 7030		-Of wireless telephone handsets (other than aerials)
8517. 7040		-of walkie-talkie (Other than aerials)
8517. 7060		-Laser receiving and transmitting unit of optical communication equipments
8517. 7070		-Antenna and parts thereof of heading No. 85. 17
8517. 7070 01		Antenna for wireless Telephones and telegrams
8517. 7070 90		Other antenna and parts thereof of heading No. 85. 17
8517. 7090		-Other
84. 73		Parts and accessories (other than covers, carrying cases and the like) suitable for use solely or principally with machines of headings No. 84. 69 to84. 72
8473. 1000		-Parts and accessories of the machines of heading No. 84. 69
		-Parts and accessories of the machines of heading No. 84. 70
8473. 2100		-of the electronic calculating machines of sub-heading No. 8470. 10, 8470. 21 or 8470. 29
8473. 2900		-Other
		-Parts and accessories of the machines of heading No. 84. 71

8473. 3010		-Of the machines of subheading 8471.4110, 8471. 4120, 8471. 4910, 8471. 4920, 8471. 5010, 8471. 5020, 8471. 6090, 8471. 7010, 8471. 7020, 8471. 7030 and 8471. 7090
8473. 3090		-Other
		-Parts and accessories of the machines of heading No. 84. 72
8473. 4010 智		-Banknote dispenser of automated teller
8473. 4090		-Other
8473. 4090 智 01		Parts and accessories of banknote sorters
8473. 4090 90		Parts and accessories of other office machines
8473. 5000		-Parts and accessories equally suitable for use with machines of two or more of the heading No. 84. 69 to 84. 72
84. 71		Automatic data processing machines and units thereof; magnetic or optical readers, machines for transcribing data onto data media in coded form and machines for processing such data, not elsewhere specified or included
		-Portable Automatic data processing machines, weighing not more than 10kg, consisting of at least a central processing unit, a keyboard and a display
8471. 3010	A	-Panel computer
8471. 3090	A	-Other
		-Other Automatic data processing machines
		--Comprising in the same housing at least a Central processing unit and an input and output unit, whether or not combined
8471. 4110	3	---mainframes
8471. 4120	3	-mini-computers
8471. 4140	A	-Microprocessings
8471. 4190		-Other
		-Other, presented in the form of systems
8471. 4910	3	-mainframes
8471. 4920	3	-mini-computers
8471. 4940		-Microprocessings
		-Other
8471. 4991		-Processing machines for the distributed control
		system
8471. 4999		-Other
		-Processing units other than those of subheading No. 8471. 41 or 8471. 49 , whether or not containing in the same housing one or two of the following types of unit; storage units , input units, output units
8471. 5010	3	-mainframes
8471. 5020	3	-mini-computers
8471. 5040		-Microprocessings

8471. 5040 01		Microprocessings, with display and host(whether or not containing in the same housing one or two of storage units, input or output units)
8471. 5040 90		Other processing unit of microprocessings (whether or not containing in the same housing one or two of storage units, input or output units)
8471. 5090		-Other
		— Input or output units, whether or not containing storage units in the same housing
8471. 6040		-Terminating machines for the huge computers, mainframes and mini-computers
8471. 6050		-Scanner
8471. 6060		-Digitizer
		-Keyboards , mice
8471. 6071		-Keyboards
8471. 6072		-mice
8471. 6090		-Other
		-storage units
8471. 7010		-rigid disk drives
8471. 7020		-Floppy disk drives
8471. 7030		---CD drives
8471. 7030 10		CD-R drives (for automatic data processing machines)
8471. 7030 90		Other CD drives (for automatic data processing machines)
8471. 7090		-Other
8471. 8000		-Other units of Automatic data processing machines
8471. 9000		-Other
8471. 9000 10		CD - R machines used exclusively for copying(also called CD repeaters)
8471. 9000 90		Magnetic or optical readers , not elsewhere specified or included (including machines for transcribing data onto data media in coded form and machines for processing such data)
84. 43		Printing machinery used for printing, cylinders and other printing components of heading 84.42; other printers Copying machines and facsimile machines, whether or not combined; Part and accessories there of
		-Printing machinery used for printing by means of plates, cylinders and other printing components of heading No. 84. 42
8443. 1100		-Offset printing machinery reel-fed
8443. 1200		-Offset printing machinery sheet-fed, office type (using sheets with one side not exceeding 22cm and the other side not exceeding 36cm in the unfolded state)
		-Other Offset Printing machinery
		-Sheet fed

8443. 1311		-single color
8443. 1312		-Double colors
8443. 1313		-four colors
8443. 1313 ^暫 01		Four - color sheet fed offset printing presses (single folio double side printing speed16000 folio/hour)
8443. 1313 ^暫 02		Four - color sheet fed offset printing press (single folio double sides printing speed \geq 13000pcs/hr)
8443. 1313 ^暫 03		Four - color sheet fed offset printing press (sheet wise or full-sheet one piece single side printing speed \geq 13000pcs/hr)
8443. 1313 90		Other four - color sheet fed offset printing press(machines printing with commodities in Duty item 84. 42)
8443. 1319		-Other
8443. 1319 ^暫 01		Five(or higher) - color sheet fed offset printing press (speed 16000pcs/h)
8443. 1319 ^暫 02		Five(or higher) - color sheet fed offset printing press (single folio double sides printing speed \geq 13000pcs/hr)
8443. 1319 ^暫 03		Five(or higher) - color sheet fed offset printings press(sheetwise or full - sheet one piece single side printing speed 13000pcs/hr)
8443. 1319 90		Other sheet fed offset printing press (machines printing with commodities under heading No. 84. 42)
8443. 1390		-Other
8443. 1400		-Letterpress printing machinery, reelfed, excluding flexographic printing
8443. 1500		-Letterpress printing machinery Other than reelfed, excluding flexographic printing
8443. 1600		-Flexographic Printing machinery
8443. 1600 ^暫 01		Flexographic printing machinery, linear speed \geq 300m/min. Wide \geq 800mm (flexographic presses, using good in heading No. 84. 42 to printing
8443. 1600 ^暫 02		Flexographic press, unit-Type , linear speed 160m/min, 250mm \leq width < 800mm (with function of stamping or holography or screen printing)
8443. 1600 90		Other flexographic printing machinery (flexographic press and machines printing with commodities under heading No.. 84. 42)
8443. 1700		--Gravure Printing machinery
8443. 1700 ^暫 01		Gravure printing machinery, linear speed \geq 350m/min, using goods in heading No. 84. 42 to printing
8443. 1700 90		other gravure printing machinery, using goods in heading No.84.42 to printing
		-Other
		-Screen Printing machinery
8443. 1921		----cylinder screen Press
8443. 192101	O	Rotary screen printing machines for textile

8443. 1921 90	O	Other rotary screen printing machines (printing machinery using the commodities under heading No. 84. 42)
8443. 1922		-Platen Screen Press
8443. 192201	O	Flat screen printing machines for textile
8443. 1922 10	6	Disk presser for producing compact disks (machines using the commodities under heading No.. 84. 42 for printing)
8443. 1922 90	O	Other platen screen presses (printing machinery using the commodities under heading No. 84. 42)
8443. 1929	O	-Other
8443. 1980	O	-Other
		-Other printers , copying machines and facsimile machines, whether or not combined
		-Machines which perform two or more of the functions of printing, copying or facsimile transmission, capable of connecting to an automatic data processing machine or to a network
8443. 3110 ^暫		-Electrostatic photosensitive-type
8443. 3110 ^暫 10	M	Electrostatic - sensitive multifunctional integrated encrypting facsimile machines (capable of connecting to an automatic data processing machine or to a network)
8443. 3110 ^暫 90		Other electrostatic - sensitive multifunctional integrated machines (capable of connecting to an automatic data processing machine or to a network)
8443. 3190		-Other
8443. 3190 10	A	Other machines which perform two of the function of printing, copying(capable of connecting to an automatic data processing machine or to a network)
8443. 3190 20	AM	Other multifunctional integrated encrypting facsimile machines (machines with the function of printing, copying or both)
8443. 3190 90	A	Other machines which perform two or more of the function of printing, copying, facsimile transmission (other than machines which perform two of the function of printing , copying , capable of connecting to an automatic data processing machine or to a network)
		-Other, capable of connecting to an automatic data processing machine or to a net work
		-Printer of a kind solely used in the machines of heading No. 8471
8443. 3211	A	-Stylus printers
8443. 3212	A	-Laser printers
8443. 3213	A	---ink-jet-printers
8443. 3214	A	-Thermal printers
8443. 3219	A	-Other
		-Digital Printing machines
8443. 3221		---ink-jet Printing machines

8443. 322 ^暫 01		Ink-jet printing equipment with breadth > 60cm (capable of connecting to an automatic data processing machine or to a network)
8443.3221 ^暫 02		Ink jet printing apparatus, 297mm < Wide≤360mm, capable of connecting to an automatic data processing machine or to a network
8443. 3221 90		Other digital ink-jet presses (capable of connecting to an automatic data processing machine or to a network)
8443. 3222		-Electrostatic photographic printing machines (laser printing machines)
8443. 3222 ^暫 01		Electrostatic photographic printing equipment (laser printers) with breadth > 32. 9cm (capable connecting to an automatic data processing machine or to a network)
8443. 3222 90		Other digital electrostatic photographic printers (laser printers) (capable connecting to an automatic data processing machine or to a network)
8443. 3229		-Other
8443. 3290		-Other
8443. 3290 10	AM	other encryption facsimile machine (capable connecting to an automatic data processing machine or to a network)
8443. 3290 90	A	Other presses (printers) , copying machine, facsimile machine, and teleprinters (capable of connecting to an automatic data processing machine or to a network)
		-Other
		-Electrostatic photo-copying apparatus
8443. 3911		-Operating by reproducing the original image directly onto the copy(direct process)
8443. 3912		-Operating by reproducing the original image via an intermediate onto the copy (indirect process)
		-Other photocopying apparatus
8443. 3921		---Incorporating an optical system
8443. 3922		-of the contact type
8443. 3923		-thermo copying apparatus
8443. 3924		-thermo - sublime copying apparatus
		-Digital Printing machines
8443. 3931		---ink-jet Printing machines
8443. 3932		-Electrostatic photographic printing machine (Laser printing machines)
8443. 3939		-Other
8443. 3990		-Other
		-Parts and accessories
		-Parts and accessories of Printing machinery used for printing by means of plates, cylinders and other printing components of

		heading 84. 42
		-machines for uses ancillary to Printing
8443. 9111		-Roll material feeder
8443. 9111 暂 01	O	Automatic roll material feeder, feeding speed 12m/s
8443. 9111 90	O	Other roll material feeder
8443. 9119 暂	O	-Other
8443. 9190 暂		-Other
8443. 9190 暂 01	O	Remote controllers for controlling the use of ink by offset printing machine (including ink-color control devices, ink amount regulation elevices and ink fountain containers)
8443.9190 暂 90		Parts and accessories of other machine using the commodities under heading No.84. 42 for printing
		-Other
8443. 9910	O	-Machines for uses ancillary to Digital Printing machines
		-Parts of Digital Printing machines
8443. 9921		-Thermal print Heads
8443. 9929		-Other
8443. 9929 暂 01		Piezoelectric ink gun(other than parts and accessories of machinery using the commodities under heading No.8422 for printing)
8443. 9929 90		Other parts of digital printing machine (other than parts and accessories of machinery using the commodities under heading No. 8422 for printing)
8443. 9990		-Other
8443. 9990 10		Photosensitive drums and toner cartridges containing photosensitive drums for other presses (printer) , copying machine and facsimile machine
8443. 9990 90		Spare parts and accessories for other presses (printer), copying machine and facsimile machine
26 04		Nickel ores and concentrates
2604 0000		Nickel ores and concentrates
2604 0000 01		Nickel ores and concentrates(Part gold value part)
2604 0000 90		Nickel ores and concentrates (Part of Non - gold Value)
26 03		Copper ores and concentrates
2603 0000		Copper ores and concentrates
2603 0000 10	7A	Copper ores and concentrates (part of gold value)
2603 0000 90	7A	Copper ores and concentrates (pan of Non-gold value)
26 01		Iron ores and concentrates, including roasted iron pyrites
		— Iron ores and concentrates, other than roasted iron pyrites
		- Non-agglomerated
2601 1110	7A	-The average grain size less than 0.8mm
2601 1120	7A	-The average grain size not less than 0.8mm but not more than 6.3 mm

2601 1190	7A	-Other
2601 1200	7A	-Agglomerated
2601 2000	7A	-roasted iron pyrites
74 03		Refined copper and copper alloys , unwrought
		-Refined copper
		--Cathodes and sections of cathodes
		---cathodes
7403 1111 暂		----Containing at least 99.9935 % by weight of copper
7403 1111 暂 01		Higher purity copper cathode (99.9999% > copper content > 99.9935 %)
74031111 暂 90		Higher purity copper cathode (copper content \geq 99.9999%) unwrought
7403 1119 暂		-Other
7403 1190 暂		-sections of cathodes
7403 1200 暂		-wire-bars
7403 1300 暂		-billets
7403 1900 暂		-Other
		-copper alloys
7403 2100		--copper-Zinc base alloys (brass)
7403 2200		--copper-tin base alloys (bronze)
7403 2900		-Other copper alloys (other than master alloys of heading No. 74 05)
74 04		Copper waste and scrap
7404 0000 暂		Copper waste and scrap
7404 0000 暂 10	AP	Waste electric machines, waste wires, cables, mainly for recovering copper
7404 0000 暂 90	AP	Other copper waste and scrap
74 10		Copper foil (whether or not printed or backed with paper , paperboard , plastics or similar backing materials) of a thickness (excluding any backing) not exceeding 0.15mm
		-not backed
7410 1100		-Of refined copper
7410 1100 暂 01		Copper foil for copper-clad board and printed circuit board, thickness \leq 0.15mm
7410 1100 90		Other copper foil of refined copper, not backed , thickness (excluding any hacking) \leq 0.15mm
		-Of copper alloys
7410 1210		-Of copper-nickel base alloys (cupronickel) or copper-nickel-zinc base alloys (nickel silver)
7410 1290		-Other
		-Backed
		-Of refined copper
7410 2110		---copper - clad board used to print circuit

7410 2190		-Other
		-Of copper alloys
7410 2210		-of copper-Nickel base alloys (cupronickel) or copper-nickel-zinc base alloys (nickel silver)
7410 2290		-Other
27 02		Lignite , whether or not agglomerated, excluding jet
2702 1000	A4xy	-Lignite, whether or not pulverized, but not agglomerated
2702 2000	A	-Agglomerated Lignite
27 07		Oils and other products of the distillation of high temperature coal tar; similar products in which the weight of the aromatic constituents exceeds that of the Non-aromatic constituents
2707 1000	AB	-Benzole
2707 2000		-Toluole
2707 3000		-Xylole
2707 4000		-Naphthalene
2707 5000		-Other aromatic hydrocarbon mixtures of which 65% or more by volume (including losses) distils at 250°C by the ASTM D86 method
		-Other
2707 9100		--Creosote oils
		-Other
2707 9910		-Phenols
2707 9990		-Other
27 01		Coal briquettes, ovoids and similar solid fuels manufactured from coal
		-Coal, whether or not pulverized, but not agglomerated
2701 1100 暂		-Anthracite
2701 1100 暂 10	47Axy	Anthracite(whether or not pulverized, but not agglomerated)
2701 1100 暂 90	7A	Anthracite filter medium
		-Bituminous Coal
2701 1210 暂	47Axy	---Coking Coal
2701 1290 暂	47Axy	-Other
2701 1900 暂	47Axy	-Other Coal
2701 2000 暂		-Briquettes, ovoids and similar solid fuels manufactured from coal
90. 02		Lenses, prisms, mirrors and other optical elements, of any material, mounted, being parts of or fittings for instruments or apparatus, other than such elements of glass not optically worked
		-Objectives lenses
		-for cameras, projectors or photographic enlargers or reducers
9002. 1110		-For the photographic cameras of subheadings No.9006. 1010 to 9006. 3000

9002. 1120		-For microfilm, microfiche or other microform readers
		-for Other cameras
9002. 1131 暂		-lens for single lens reftex cameras
9002. 1139 暂		-Other
9002. 1190		-Other
9002. 1190 暂 01		Lenses and lens components for colour crystal projector and digital light processor
9002. 1190 90		Other objective lenses for cameras, projectors (including lenses for photographic enlargers)
		-Other
9002. 1910		-for Cinematographic cameras or projectors
9002. 1990		-Other
9002. 1990 暂 01		Lenses for vidicon and amcorder
9002. 1990 暂 02		Mobile phone, tablet computer in an objective lens (8000000 pixels and above)
9002. 1990 90		Other objective lenses not specified or included
		-filters
9002. 2010		-for cameras
9002. 2090		-Other
		-Other
9002. 9010		-for cameras
9002 9010 暂 01		Eyepiece of diopter adjustment device for camera (other than objective , filters)
9002. 9010 90		Other optical elements for cameras (other than objective . filters)
9002. 9090		-Other
9002 9090 暂 01		Other eyepiece of diopter adjustment device for camera
9002 9090 暂 02		Mask plate
9002. 9090 10	3	Radiation resistance lenses (capable of resisting radiance $> 5 \times 10^4$ Gy (Si) and not lowering operation quality)
9002. 9090 90		Other unlisted optial elements for optial instruments (other than objective lenses and filters)
90. 31		Measuring or checking instruments, appliances and machines, not specified or included elsewhere in this Chapter; profile projectors
9031. 1000		-Machines for balancing mechanical parts
9031. 1000 10	3	Gyro dynamic balancing testers
9031. 1000 90		Other machines for balancing mechanical parts
9031. 2000		-Test benches
9031. 2000 10	3	Gyro/motor running test-benches
9031. 2000 20	3	Accelerometer test-benches
9031. 2000 30	3	Testbed (capable of testing rocket engine with a thrust > 90 KN or testing three individual thrust forces at the same time)
9031. 2000 40	3	Inertial platform test-benches (including high-precision centrifuge

		and turntable)
9031. 2000 90		Other test benches
		-Other optical instruments and appliances
9031. 4100		-For inspecting semiconductor wafers or devices or for inspecting photomasks or reticles used in manufacturing semiconductor devices
		-Other
9031. 4910		-Profile projectors
9031. 4920		-Measuring grating device
9031. 4990		-Other
9031. 4990 10	60	Automatic inspection detectors (AID) for CD production
9031. 4990 90		Other measuring or checking optical instruments and appliances, not elsewhere specified or included in chapter 90
		-Other instruments, appliances and machines
9031. 8010		-Optical telecommunication and optical fibre performance testing instruments
9031. 8020		---Coordinate measuring machine
		-Apparatus for examinations, without damaging structure (other than apparatus for radiological examinations)
9031. 8031		-Apparatus for ultrasonic examinations
9031. 8032		-Apparatus for magnetic examinations
9031. 8033 ^暂		-Apparatus for eddy examinations
9031. 8039		-Other
9031. 8090		-Other
9031. 8090 ^暂 01		Runway friction coefficient tester
9031. 8090 ^暂 02		Audio life detection instrument
9031. 8090 ^暂 03		Audio and video life detection instrument
9031. 8090 10	3	Inertial measurement unit testers
9031. 8090 20	3	Gyro tuning testers
9031. 8090 90		Other measuring or checking instruments, appliances and machines (not elsewhere specified or included in Chapter 90)
9031. 9000		-Parts and accessories
9031. 9000 20	3	Processing clamps for stabling element of inertial measurement unit
9031. 9000 30	3	Inertial platform balancing clamps
9031. 9000 90		Other pans of instruments, appliances and machines of heading No.90. 31, not elsewhere specified or included in chapter 90
90. 01		Optical fibres and optical fibre bundles; optical fibre cables, other than those of heading No 85. 44; sheets and plates of polarizing material; lenses (including contact lenses), prisms, mirrors and other optical elements , of any material, unmounted, other than such elements of glass not optically worked

9001. 1000		-Optical fibres, optical fibre bundles and cables
9001. 1000 01		Dispersion-unshifted single-mode fibers (G. 652 including G652A.C652B .G652C .G652D)
9001. 1000 09		Other optical fibres (other than goods of heading No. 85. 44)
9001. 1000 90		Optical fibres bundles and cables(other than goods of heading No. 85. 44)
9001. 2000		-Sheets and plates of polarizing material
9001. 2000 01		Sheets and plates of polarizing material for LCD panels
9001. 2000 暂 02		Plates of polarizing material for LCD projector
9001. 2000 暂 03		Plates of polarizing material for digital film projector
9001. 2000 90		Other sheets and plates of polarizing material
9001. 3000 暂		-contact lenses
		-Spectacle lenses of glass
9001. 4010 暂		-Photochromic
		-Other
9001. 4091		-for sunglasses
9001. 4099		-Other
		-Spectacle lenses of other materials
9001. 5010 暂		-photochromic
		-Other
9001. 5091		-for sunglasses
9001. 5099 暂		-Other
		-Other
9001. 9010		---Color filter
9001. 9090		-Other
9001. 9090 暂 01		Optical elements of micro-optical assemblies for optical communications (thin film filters with working wave-length 800nm - 1700nm, automatic selfoc lens, faraday rotation isolator)
9001. 9090 暂 02		Micro-lens (laser transceiver devices for laser video disc)
9001. 9090 暂 03		Fresnel lens projection screen (screen diagonal ≥ 80 inches, projection ratio ≤ 0.26 , gain ratio ≥ 0.8 , lens spacing ≤ 100 micron)
9001. 9090 暂 04		Optical components for back-light modules of LCD (inducing light guide baffle -board, diffusion sheet, brightening sheet)
9001. 9090 暂 05		Polarizer for LCD projector
9001. 9090 暂 06		Polarizing element with digital movie projector
9001. 9090 90		other optical elements, not specified or included elsewhere in the heading No. 9001 (other than of glass made elements not optically processed)
39 15		Waste, parings and scrap, of plastics
3915 1000	AP	-Of polymers of ethylene
3915 2000	AP	-of polymers of Styrene
3915 3000	AP	-of polymers of Vinyl chloride
		-of Other plastics

3915 9010	AP	-Of polyethylene glycol terephthalate
3915 9090	AP	-Other
39 07		Polyacetals, other polyethers and epoxide resins, in primary forms polycarbonates, alkyd resins, polyallyl esters and other polyesters, in primary forms
		-Polyacetals
3907 1010		-Polyoxymethylene (POM)
3907 1090		-Other
		-Other polyethers
3907 2010 暂		-Polytetramethylene ether glycol
3907 2090		-Other
3907 3000		-Epoxide resins
3907 3000 暂 01	A	Epoxide resins, in primary forms, containing $\geq 18\%$ by weight of bromine, or import CIF price > 3800 USD/ton (If dissolved into solutions, convert the content percentage of bromine by pure epoxy resin)
3907 3000 90	AB	Epoxide resins, in primary forms , containing $< 18\%$ by weight of bromine
3907 4000 暂		-Polycarbonates
3907 5000	AB	-Alkyd resins
		-poly (Ethylene terephthalate)
		---In the form of slices or chips
3907 6011		-High viscosity
3907 6019		-Other
3907 6090		-Other
39U7 7000f		-poly (lactic acid)
		-Other polyesters
3907 9100		-Unsaturated
		-Other
3907 9910		-poly butylene terephthalate
3907 9910 01		Not reinforced or modified PBT resins, in primary forms
3907 9910 90		Other Poly butylene terephthalate
		-Other
3907 9991	AB	-poly Terephthalic acid hexylene glycol – butane-diol ester
3907 9999	AB	-Other
39 01		Polymers of ethylene, in primary forms
3901 1000		-Polyethylene having a specific gravity of less than 0.94
3901 1000 暂 01		Polyethylene having a specific gravity of less than 0.94, in primary forms (CIF $> USD3800$ /ton)
3901 1000 90		Polyethylene having a specific gravity of less than 0.94, in primary forms
3901 2000		-Polyethylene having a specific gravity of 0.94 or more
3901 2000 暂 01		Polyethylene having a specific gravity of 0.94 or more in primary

		forms(CIF > USD3800/ton)
3901 2000 90		Polyethylene having a specific gravity of 0.94 or more, in primary forms
3901 3000		-Ethylene-Vinyl acetate copolymers
		-Other
3901 9010		-Ethylene-propylene copolymers
3901 9020		-Linearity Low-density polyethylene
3901 9090		-Other
44 07		Wood sawn or chipped lengthwise, sliced or peeled, whether or not planed, sanded or finger- jointed, of a thickness exceeding 6 mm
		-Coniferous
4407 4010		-Korean Pine and Mongolian scotch Pine
4407 4010 11	ABEF	Korean pine wood sawn or chipped lengthwise, sliced or peeled , end-jointed, thickness > 6mm
4407 4010 19	AB	Mongolian scotch pine wood sawn or chipped length- wise , sliced or peeled, end-jointed, thickness > 6mm
4407 4010 91	4ABEFxy	Wood sawn or chipped lengthwise, sliced or peeled, of Korean pine, Not end - jointed , thickness > 6mm
4407 4010 99	4ABxy	Wood sawn or chipped lengthwise , sliced or peeled, of Mongolian scotch pine, not end - jointed, thickness > 6mm
4407 1020		-White pine (spruce and fir)
4407 1020 11	ABEF	Wood sawn or chipped lengthwise, sliced or peeled, of endangered white pine (spruce and fir) , end -jointed , thickness > 6mm
4407 1020 19	AB	Wood sawn or chipped lengthwise, sliced or peeled, of other white pine (spruce and fir) , end - jointed, thickness > 6mm
4407 1020 91	4ABEFxy	Wood sawn or chipped lengthwise , sliced or peeled, of endangered white pine (spruce and fir) , not end - jointed, thickness > 6mm
4407 1020 99	4ABxy	Wood sawn or chipped lengthwise, sliced or peeled, of other white pine (spruce and fir) , not end - jointed, thickness > 6mm
4407 1030		-Radiata Pine
4407 1030 10	AB	Wood sawn or chipped lengthwise, sliced or peeled, of radiata pine , end-jointed , thickness > 6mm
4407 1030 90	4ABxy	Wood sawn or chipped lengthwise , sliced or peeled , of radiata pine, not end-jointed, thickness > 6mm
4407 1040		-Douglas fir
4407 1040 10	AB	Wood sawn or chipped lengthwise, sliced or peeled , of douglas fir (Pseudotsuga menziesii) , end-jointed , thickness > 6mm
4407 1040 90	4ABxy	Wood sawn or chipped lengthwise, sliced or peeled , of douglas fir (Pseudotsuga menziesii) not end-jointed , thickness > 6mm

4407 1090		-Other
4407 1090 11	FEAB	other endangered coniferous wood sawn or chipped lengthwise, sliced or peeled , end-jointed, thickness >6mm
4407 1090 19	AB	Other coniferous wood sawn or chipped lengthwise, sliced or peeled , end-jointed, thickness > 6mm
4407 1090 91	FEAB4xy	Other endangered coniferous wood sawn or chipped lengthwise, sliced or peeled, not end-jointed, thickness > 6mm
4407 1090 99	AB4xy	other coniferous wood sawn or chipped lengthwise, sliced or peeled, not end-jointed, thickness > 6mm
		-Of tropical wood specified in Subheading note 2 to this chapter
4407 2100		-Mahogany (Swietenia spp.)
4407 2100 10	FEAB	Wood sawn or chipped lengthwise , sliced or peeled, of mashogany (swietenia spp.), end-jointed, thickness > 6mm
4407 2100 90	ABEFxy	Wood sawn or chipped lengthwise , sliced or peeled, of mashogany (swietenia spp.), not - end-jointed, thickness > 6mm
4407 2200		--Virola , Imbuia and Balsa
4407 2200 10	AB	Wood sawn or chipped lengthwise sliced or peeled, of virola, imbuia and balsa, end-jointed, thickness >6mm
4407 2200 90	4ABxy	Wood sawn or chipped lengthwise, sliced or peeled , of virola imbuia and balsa, not end-jointed , thickness >6mm
4407 2500		-Dark red Meranti, Light red Meranti and Meranti Bakau
4407 2500 10	AB	Wood sawn or chipped lengthwise, sliced or peeled, of Dark Red Meranti, Light Red Meranti and Meranti Bakau, end-jointed, thickness > 6mm
4407 2500 90	y4xAB	Wood sawn or chipped lengthwise , sliced or peeled, of Dark Red Meranti, Light Red Meranti and Meranti Bakau, not end-jointed, thickness > 6mm
4407 2600		-White Lauan, White Meranti, White Seraya, Yellow Meranti and Alan
4407 2600 10	AB	Wood sawn or chipped lengthwise, sliced or peeled, of White Lauan, White Meranti, White Seraya, Yellow Meranti and Alan, end-jointed, thickness >6mm
4407 2600 90	y4xAB	Wood sawn or chipped lengthwise, sliced or peeled, of White Lauan, White Meranti, White Seraya, Yellow Meranti and Alan, not end-jointed, thickness > 6mm
4407 2700		-Sapelli
4407 2700 10	AB	Wood sawn or chipped lengthwise, sliced or peeled, of sapelli, end-jointed , thickness > 6mm
4407 2700 90	4ABxy	Wood sawn or chipped lengthwise, sliced or peeled, of sapelli, not end-jointed thickness > 6mm
4407 2800		---Iroko

4407 2800 10	AB	Wood sawn or chipped lengthwise, sliced or peeled, of Iroko, end - jointed, thickness > 6mm
4407 2800 90	4ABxy	Wood sawn or chipped lengthwise, sliced or peeled, of Iroko, not end - jointed , thickness > 6mm
		-Other
4407 2910		-Teak
4407 2910 10	AB	Wood sawn or chipped lengthwise, sliced or peeled, of teak, end-jointed, thickness > 6mm
4407 2910 90	y4xAB	Wood sawn or chipped lengthwise, sliced or peeled, of teak, not end-jointed , thickness > 6mm
4407 2920		-Acajou
4407 2920 10	AB	Wood sawn or chipped lengthwise, sliced or peeled, of acajou, end-jointed, thickness > 6mm
4407 2920 90	AB	Wood sawn or chipped lengthwise, sliced or peeled, of acajou, not end-jointed, thickness > 6mm
4407 2930		-Merhan
4407 2930 10	AB	Wood sawn or chipped lengthwise, sliced or peeled, of merban, end-jointed, thickness > 6mm
4407 2930 90	AB	Wood sawn or chipped lengthwise, sliced or peeled, of merban, not end-jointed, thickness > 6mm
4407 2990		-Other
4407 2990 11	FEAB	Wood sawn or chipped lengthwise , sliced or peeled, of Ramin wood, end-jointed, thickness > 6mm
4407 2990 12	FEAB	Other endangered tropical wood, not elsewhere specified or included in subheading note 2 to this Chapter, sawn or chipped lengthwise, sliced or peeled , end-jointed , thickness > 6mm
4407 2990 19	AB	Wood sawn or chipped lengthwise, sliced or peeled, of other tropical wood not elsewhere specified or included in subheading note 2 to this Chapter, end-jointed, thickness > 6mm
4407 2990 91	y4xAFE B	Other tropical endangered wood, not elsewhere specified or included in subheading note 2 to this Chapter, sawn or chipped lengthwise, sliced or peeled , not end-jointed, thickness > 6mm
4407 2990 99	y4xAB	Other tropical wood not elsewhere specified or included in subheading note 2 to this Chapter, sawn or chipped lengthwise, shiced or peeled, not end-jointed, thickness > 6mm
		-Other
4407 9100		-of oak (Quercus spp.)
4407 9100 10	AB	Wood sawn or chipped lengthwise, sliced or peeled, of oak (Quercus spp.), end-jointed, thickness > 6mm

4407 9100 90	y4xAB	Wood sawn or chipped lengthwise , sliced or peeled, of oak (<i>Quercus</i> spp.) , not end-jointed, thickness >6mm
4407 9200		-Of beech (<i>Fagus</i> spp.)
4407 9200 10	ABE	Wood sawn or chipped lengthwise, sliced or peeled, of beech (<i>Fagus</i> spp.) , end-jointed, thickness >6mm
4407 9200 90	4ABExy	Wood sawn or chipped lengthwise, sliced or peeled, of beech (<i>Fagus</i> spp.) , not end-jointed, thickness > 6mm
4407 9300		-of maple (<i>Acer</i> spp.)
4407 9300 10	AB	Wood sawn or chipped lengthwise, sliced or peeled, of maple, end-jointed, thickness > 6mm
4407 9300 90	4ABxy	Wood sawn or chipped lengthwise, sliced or peeled, of maple, not end - jointed, thickness > 6mm
4407 9400		-of cherry (<i>Prunus</i> spp.)
4407 9400 10	AB	Wood sawn or chipped lengthwise, sliced or peeled, of cherry, end-jointed, thickness > 6mm
4407 9400 90	4ABxy	Wood sawn or chipped lengthwise, sliced or peeled, of cherry , not end - jointed, thickness > 6mm
4407 9500		-of Ash(<i>Fraxinus</i> , spp.)
4407 9500 10	AB	Wood sawn or chipped lengthwise, sliced or peeled, of as, end-jointed, thickness > 6mm
4407 9500 90	4ABxy	Wood sawn or chipped lengthwise, sliced or peeled, of ash, not end – jointed, thickness > 6mm
		-Other
4407 9910		-of Camphor-wood, nanmu or rosewood
4407 9910 10	AFEB	Wood sawn or chipped lengthwise , sliced or peeled , of camphor-wood, nanmu or rosewood, end-jointed, thickness > 6mm
4407 9910 90	4xAFEB	Wood sawn or chipped lengthwise, sliced or peeled, of camphor-wood nanmu or rosewood not end-jointed, thickness > 6mm
4407 9920		-Of paulownia
4407 9920 10	AB	Wood sawn or chipped lengthwise, sliced or peeled, of paulownia , end-jointed , thickness > 6mm
4407 9920 90	AB	Wood sawn or chipped lengthwise, sliced or peeled, of paulownia, not end-jointed, thickness > 6mm
4407 9930		-North American hardwood (including Walnut)

4407 9930 10	AB	Wood sawn or chipped lengthwise, sliced or peeled, of North American broadleaf hardwood (including walnut) end-jointed, thickness > 6mm
4407 9930 90	AB	Wood sawn or chipped lengthwise , sliced or peeled, of North American broadleaf hardwood (including walnut) not end-jointed, thickness >6mm
4407 9980		-Other temperate, Non-Coniferous wood
4407 9980 11	FEAB	Wood sawn or chipped lengthwise, sliced or peeled, endangered Non-coniferous wood, of temperate, end- jointed, thickness > 6mm
4407 9980 19	AB	Wood sawn or chipped lengthwise, sliced or peeled, of temperate zone, Non-coniferous wood, end-jointed, thickness > 6mm
4407 9980 91	4ABEFxy	Wood sawn or chipped lengthwise, sliced or peeled, endangered Non-coniferous wood of temperate, not end-jointed, thickness > 6mm
4407 9980 99	4ABxy	Wood sawn or chipped lengthwise, sliced or peeled, of temperate zone Non-coniferous wood not end-jointed, thickness > 6mm
4407 9990		-Other
4407 9990 11	AFEB	Wood sawn or chipped lengthwise, sliced or peeled, of Puncture vine wood of South America, end-jointed , thickness > 6mm
4407 9990 12	AFEB	Wood sawn or chipped lengthwise, sliced or peeled, of Chinese eaglewood and similar chinese eaglewood, end-jointed, thickness > 6mm
4407 9990 15	AFEB	Wood sawn or chipped lengthwise, sliced or peeled, of other endangered wood , end - jointed, thickness> 6mm
4407 9990 19	AB	other wood sawn or chipped lengthwise, sliced or peeled, end-jointed thickness > 6mm
4407 9990 91	y4xAFEB	Wood sawn or chipped lengthwise, sliced or peeled , of Puncture vine wood of South America not end-jointed , thickness > 6mm
4407 9990 92	y4xAFEB	Wood sawn or chipped lengthwise, sliced or peeled, of Chinese eaglewood and similar chinese eaglewood, not end - jointed , thickness > 6mm

4407 9990 95	y4xAFE B	Wood sawn or chipped lengthwise, sliced or peeled, of other endangered wood, not end - jointed, thickness > 6mm
4407 9990 99	y4xAB	Other wood sawn or chipped lengthwise, sliced or peeled, not end-jointed , thickness > 6mm
44 02		Wood charcoal (including shell or nut charcoal), whether or not agglomerated
4402 1000		-of bamboo
4402 9000		-Other
4402 9000 10	8	Wood charcoal obtained by burning wood
4402 9000 90		Other wood charcoal (including shell or nut charcoal, whether or not agglomerated)
44 03		Wood in the rough, whether or not stripped of bark or sapwood, or roughly squared
4403 1000		-Treated with paint, stains, Creosote or other Preservatives(treated with paint, stains, creosote or other preservatives)
4403 1000 10	8AF	Other taxaceae wood in the rough (treated with paint, stains, creosote or other preservatives)
4403 1000 20	8AF	Other endangered coniferous wood in the rough (treated with paint, stains, creosote or other preservatives)
4403 1000 90	8A	Other wood in the rough, treated with paint, stains, creosote or other preservatives
		-Other Coniferous
4403 2010		-Korean Pine and Mongolian scotch Pine
4403 2010 10	8AEF	Other korean pine wood in the rough(other than the wood treated with paint, stains, creosote or other preservatives)
4403 2010 90	8A	Other mongolian scotch pine in the rough(other than the wood treated with paint, stains, creosote or other preservatives)
4403 2020	8AF	-White Pine (spruce and fir)
4403 2020 10	8AF	Endangered white pine, spruce and fir wood in the rough
4403 2020 90	8A	Other white pine , spruce and fir, wood in the rough
4403 2030	8A	-Radiata Pine
4403 2040	8A	-Larch
4403 2050	8A	-Douglas fir
4403 2090		-Other
4403 2090 10	8AF	Other Endangered coniferous wood in the rough
4403 2090 20	8AF	Other endangered coniferous in the rough

4403 2090 90	8A	Other coniferous wood in the rough
		-Other of tropical wood specified in Subheading note 2 to this Chapter
4403 4100	8A	-Dark red Meranti, Light red Meranti and Meranti Bakau
		-Other(of tropical Non-coniferous wood specified in subheading note I to this chapter)
4403 4910	8A	-Teak
4403 4920	8A	-Okoume (Au koumed)
4403 4930	8A	-Dipterocarpus spp. Keruing
4403 4940	8A	-Kapur (Dryobalanops spp.)
4403 4950	8A	---Intsia spp. (Mengaris)
4403 4960	8A	-Koompassia spp. (Mengaris or Kerupas)
4403 4970	8A	-Anisopter spp.
4403 4990		-Other
4403 4990 10	8AF	Endangered tropical wood in the rough, specified in Subheading note 2 to this Chapter(other than the wood treated with paint, stains, creosote or other preservatives)
4403 4990 90	8A	Tropical wood in the rough, specified in Subheading note 2 to this Chapter (other than the wood treated with paint , stains, creosote or other preservatives)
		-Other
4403 9100	8A	-of oak (Quercus spp.)
4403 9200	8A	-Of beech (Fagus spp.)
		-Other
4403 9910	8A	-of nan mu (Phoebe)
4403 9920	8A	-of Camphor wood
4403 9930	8AF	-Of rosewood
4403 9940	8A	-Of Kiri (Paulownia)
4403 9950	8A	-Ash
4403 9960	8A	-North American hard wood (including cherry, walnut and maple)
4403 9980		-Other, temperate Non-coniferous , not specified
4403 9980 10	8AF	Other temperate zone endangered Non-coniferous wood(other than the wood treated with paint , stains, creosote or other preservatives) not elsewhere specified or included
4403 9980 90	8A	Other temperate zone Non-coniferous wood (other than the wood treated with paint, stains, creosote or other preservatives) not elsewhere specified or included
4403 9990		-Other
4403 9990 11	8AEF	Puncture vine wood in the rough of South America (other than the wood treated with paint , stains , creosote or other preservatives)

4403 9990 12	8AEF	" Chinese eaglewood and similar chinese eaglewood (other than the wood treated with paint, stains, creosote or other preservatives) "
4403 9990 19	8AEF	Other endangered Non - coniferous wood in the rough (other than the wood treated with paint, stains, creosote or other preservatives)
4403 9990 90	8A	Other Non-coniferous wood in the rough (other than the wood treated with paint, stains, creosote or other preservatives) not elsewhere specified or included
29 01		Acyclic hydrocarbons
2901 1000		-Saturated
		-Unsaturated
2901 2100	AB	-Ethylene
2901 2200	AB	-Propene (propylene)
		-Butene (butylene) and isomers thereof
2901 2310	AB	--1 -butene
2901 2320	AB	-2-butene
2901 2330		-2-methyl-Propene
		-Buta-1 , 3-diene and isoprene
2901 2410	AB	-Buta-1, 3-diene
2901 2420		---Isoprene
		-Other
2901 2910	AB	---Isopentene
2901 2920	AB	-Acetylene
2901 2990		-Other
2901 2990 10	S	Muscalure
2901 2990 90		Other unsaturated acyclic hydrocarbon
29 05		Acyclic alcohols and their hatogenated, sulphonated, nitrated or nitrosated derivatives
		-Saturated monohydric alcohols
2905 1100	AB	-Methanol (methyl alcohol)
		-Propan-1-ol (propyl alcohol) and propan-2-ol (isopropyl alcohol)
2905 1210	AB	-Propan-1-ol (propyl alcohol)
2905 1220	ABC	-Propan-2-ol (isopropyl alcohol)
2905 1300	AB	-Butan-1 -ol (n-butyl alcohol)
		-Other butanols
2905 1410		-ISO-butyl alcohol
2905 1420		-sec-butyl alcohol
2905 1430		-tert-Butyl alcohol
		-Octanol (octyl alcohol) and isomors thereof-
2905 1610		---n-Octanol
2905 1690		-Other

2905 1700		-Dodecan-1-ol (lauryl alcohol), hexadecan-1-ol (cetyl alcohol) and octadecan-1-ol (stearyl alcohol)
		-Other
2905 1910	23	-3 , 3 -Dimethyl-2-butanol (pinacolyl alcohol)
2905 1990		-Other
2905 1990 10	s	Triacantanol
2905 1990 90		Other saturated monohydric alcohols
		-Unsaturated monohydric alcohols
		-acyclic terpene alcohols
2905 2210		---Geraniol , nerol (cis-3, 7 -Dimethyl-2 , 6-octadien- 1-ol)
2905 2220		---Citronellol (3 7 -Dimethyl-6-octen-1 -ol)
2905 2230	AB	-Linalool
2905 2290		-Other
2905 2900		-Other
		-Diols
2905 3100		-Ethylene glycol (ethanediol)
2905 3200f		-Propylene glycol (propane-1 ,2-diol)
		-Other
2905 3910		-2 , 5 -dimethyl hexandiol
2905 3990		-Other
2905 399001	AB	I , 3 -Propanediol
2905 3990 02	AB	I , 4 -Butanediol
2905 3990 10	s	Ethohexadiol
2905 3990 90	AB	other diatomic alcohols
		-Other polyhydric alcohols
2905 4100		-2 -Ethyl-2- (hydroxymethyl) propane-1, 3-diol (trimethylolpropane)
2905 4200		-Pentaerythritol
2905 4300	AB	-Mannitol
2905 4400		-D-glucitol (sorbitol)
2905 4500	AB	--Glycerol
		-Other
2905 4910	AB	-Xylitol
2905 4990		-Other
		-halogenated, sulphonated, nitrated or nitrosated deiivatives of acyclic alcohols
2905 5100	I	-Ethchlorvynol (INN)
2905 5900		-Other
2905 5900 10	I	Salts of Ethchlorvynol (INN)
2905 5900 20	3A	2-Chloroethanol

2905 5900 30		Bronopol
2905 5900 40	s	Ceiftor
2905 5900 90		Other hatogenated, sulphonated derivatives, of acyclic alcohol
29 02		Cyclic hydrocarbons
		-Cyclanes, cyclenes and cycloterpenes
2902 1100	AB	--Cyclobexane
		-Other
2902 1910		-Pinene
2902 1920		-- -4 -alkyl-4 ' -alkyl-bicyclobexane
2902 1990		-Other
2902 1990 11	s	1-methyl cyclopropene
2902 1990 12		D-limonene
2902 1990 90		Other cyclanes, cyclenes and cvcloterpenes
2902 2000	AB	-Benzene
2902 3000	23	-Toluene
		-Xylenes
2902 4100		-o-Xylene
2902 4200		--m-Xylene
2902 4300		-p-Xylene
2902 4400		-Mixed Xylene isomers
2902 5000	AB	-Styrene
2902 6000	AB	-e chylbenzene
2902 7000	AB	-Cumene
		-Other
2902 9010		-Tetrahydronaphthalene (tetralin)
2902 9020	AB	-Naphthalene
2902 9030		-Dodecylhenzene
2902 9040		---4 - (4'- alkyl cyclobexyl) cyclohexyl ethylene
2902 9090		-Other
2902 9090 10		Biphenyl
2902 9090 90		other aromatic hydrocarbons